

# ARE YOU IN?

In FARMSHINE, that is



Now with affordable color on every page and with the targeted audience you want.

To be in, please call one of our sales representatives today.

**Advertising Dep't**  
717-656-8050  
ads@farmshine.net

**Missy Johnson**  
484-336-0588  
farmshine@verizon.net

**Ashley Denlinger**  
717-940-7750  
ashley@farmshine.net

# FARM SHINE

We rise every week to cover farmers and agribusinesses



Farmshine • Volume 45, Number 20 • \$20 one year

Mailed the day before →

January 19, 2024

*'We have to make sure our food producers can keep producing food'*

## 'GT' Thompson is looking for 'home-grown' solutions

By SHERRY BUNTING  
Special for Farmshine

HARRISBURG, Pa. -- Since 2009, Congressman Glenn 'G.T.' Thompson, representing Pennsylvania's 15th legislative district, has had annual listening sessions during the Pennsylvania Farm Show. On Jan. 6, he once again listened to the farming community gathered in the Delaware Room of the Farm Show Complex in Harrisburg on the opening day.

Joining him were Congressman Dan Meuser, representing Pennsylvania's 9th district, and Russell Redding, State Secretary of Agriculture.

"I'm looking forward to a lot of homegrown solutions today," said G.T., who stressed his role is to do more listening than talking, just as he has during the nearly 80 Farm Bill listening sessions across nearly 40 states over the past two years as chairman of the U.S. House Ag Committee.

A wide range of topics were brought up, especially elements of the Farm Bill, which G.T. says he hopes to move out of committee on the House side in March.

Attendees mentioned everything from the disastrous losses from the Class I milk pricing change in the last Farm Bill and a need to update the Dairy Margin Coverage in the dairy sector, to farm labor shortages, rural broadband, crop insurance, risk management for specialty crops, young and



Pictured with Rep. G.T. Thompson at the 15th annual listening session kicking off the 108th Pa. Farm Show is Farmshine contributor Sherry Bunting and her granddaughter Melanie Messner, 12. Bunting has attended most every G.T. listening session since 2009, and Melanie has attended a few since age 5. Bunting expresses appreciation for G.T.'s frank, yet bipartisan, approach to taking the concerns of the farming community to Washington D.C., including his fireless leadership on whole milk choice in schools.

beginning farmer grant-match challenges, and farm conservation and preservation programs.

G.T. addressed the Class I pricing issue, saying: "Congress made this change in the last Farm Bill, and it's our responsibility to change the language back (to the 'higher of'), while still respecting the eventual results of the USDA hearing. The hearing is a lengthy process, but farmers want to see immediate relief."

Big on his priorities for the Farm Bill is to repurpose Inflation Reduction Act (IRA) funds -- the \$20 billion in climate smart funds -- to apply it to the Farm Bill baseline. This \$20 billion has already declined to \$15 billion simply because of the passage of time, he explained. The IRA bundle has a 2031 expiration, and even though not a penny has yet been spent, the amount continues to decline based on the expiration timetable.

G.T. maintains that putting the IRA funds into the Farm Bill baseline keeps it intact to benefit farmers over the long term. In fact, Farm Bill conservation programs are already oversubscribed. Therefore, making these IRA funds part of the Farm Bill baseline is a win for farms and for the environment.

"There are a number of bipartisan issues out there, and agriculture is one that brings us together. There's not much that is more important than food production," he said. "We

turn to page 14

## Murky and quicksand-like scenarios emerge at hearing

By SHERRY BUNTING  
Special for Farmshine

CARMEL, Ind. -- Shadow pricing, demand elasticity, commoditized loss of prior incentives, balancing cost, give-up cost, base differential, uniform differential, market-clearing price...

These terms ruled the day when the USDA National Hearing on Federal Milk Marketing Order (FMMO) proposals resumed in Carmel, Indiana this week after a more than 4-week recess.

The hearing began in late August. If it does not conclude by Fri., Jan. 19, it will again recess until Jan. 29.

American Farm Bureau estimates that another 270 days of post-hearing processes must follow before a USDA decision could be implemented, and even this is subject to proposals that seek a 15-month delay between decision and implementation due to potential impacts on CME futures-based risk management tools, such as Dairy Revenue Protection (DRP).

This is far from over, and hanging in the balance is the Class I price calculation, now based on an averaging method, under which farmers have lost more than \$1.02 billion since May 2019 vs. the previous 'higher of'.

Testimony Tues., Jan. 16 included Dr. Mark Stephenson, retired UW-Madison dairy economist on behalf of Milk Innovation Group (MIG), made up of 'innovative' and branded fluid

milk processors, including fairlife, HP Hood, Anderson-Erickson, Danone North America, Shamrock, Organic Valley, Aurora Organic, and Pennsylvania's own Turner Dairy Farms.

Dr. Stephenson delivered his bombshell for MIG that was based on analysis he did using 2016 data in a simulator model, from which he made "certain discoveries."

First, Stephenson suggested that fluid milk is shifting to become price-elastic vs. the long-held belief that fluid milk sales are price-inelastic. This was followed up by fluid milk processor representatives showing post-Covid fluid milk sales volumes declined as prices rose.

Stephenson cautioned USDA to refrain from setting regulated prices too high, saying this would reduce returns to producers by reducing total fluid milk sales.

This suggestion was challenged in cross examination. In fact, AFBF chief economist Dr. Roger Cryan noted the FMMO focus on fluid milk was originally partly predicated on its "public good" as a food staple, almost akin to a "public utility."

In cross examination on Jan. 17, Stephenson also revealed he was paid by MIG to analyze the \$1.60 base differential, and his work began before MIG finalized its proposal to remove the \$1.60 per cwt. base differential all the way down to zero for all Class I milk, nationwide.

Currently, the \$1.60 base differential is built uniformly into the Class I price for every regulated county across all FMMOs. The varied location differentials are added to the base differ-

ential and spread across the revenue-sharing pools.

Stephenson used his U.S. Dairy Sector Simulator Model (USDSS) to develop a map as though a "milk-dictator" could efficiently "move milk to its highest global use" through various constraints.

He developed a map of "shadow pricing" that showed the incremental differences between Class I and Class III prices across the country. These marginal differences reflect the costs of getting manufacturing plants to give up milk to fluid plants in the central U.S., where milk production exceeds population vs. the cost to balance fluid milk markets in the East and in southern California, where population exceeds milk production.

It was the questioning from USDA AMS administrator Erin Taylor that prompted Stephenson to concede: "You may have caught a major flaw in what I have done here, so I would want to look at this more carefully."

Yes, he will be back again to this ever-lengthening hearing.

Notwithstanding exposure of a possible flaw in the simulator analysis, Stephenson said the 'market-clearing' price is the target to aim at, and the system of setting regulated minimum prices "should err on the side of being too-low instead of too-high."

He said processors will pay premiums in the breach of a 'too-low' minimum price, but there are few options for

turn to page 5

### PERIODICAL • DO NOT DELAY

Call to annual PHA meeting ....	7	Georgia dairymen honored ..	17
Classified advertising .....	20	HAUSA news .....	2, 7, 13
Consignments invited .....	16	Letters to the editor .....	3
DHIA reports .....	8-11	Market Moos .....	12
Editorials .....	4	Maryland Holstein Jrs. ....	14
Events calendars .....	6	NMPF outlook for 2024 .....	15

# “Thanks for the true dairy facts.”

-D.S.A.  
Pennsylvania

It's time.

**Don't wait.**

Send in your subscription request now. Printing the true dairy facts since 1979.



Two Years \$38 • One Year \$20

Name: \_\_\_\_\_  
 Address: \_\_\_\_\_  
 Town: \_\_\_\_\_ State: \_\_\_\_\_ Zip: \_\_\_\_\_  
 Phone or e-mail: \_\_\_\_\_ New / Renewal (Circle one)

Mail with payment to **FARMSHINE**, 342 E. Main St., Ste. 201, Leola, PA 17540

## HAUSA award nominations are due by January 31

BRATTLEBORO, Vt. — Outstanding Holstein breeders and dairy industry leaders are recognized each year with Holstein Association USA's annual awards. These include the prestigious Distinguished Young Holstein Breeder, Distinguished Leadership, and Elite Breeder recognitions.

“A highlight of every National Holstein Convention is recognizing our deserving award recipients for their contributions to the Holstein breed, Holstein Association USA, and the greater dairy community,” says Holstein Association USA CEO John Meyer. “We look forward to continuing to add to the high-caliber list of award recipients and encourage you to nominate people you feel are deserving.”

Holstein enthusiasts are invited to submit nominations for the Elite Breeder and Distinguished Leadership awards. Applications for the Elite Breeder and Distinguished Leadership awards are considered for three years after initial submission. Current Holstein breeders between the ages of 21 and 40 are encouraged to apply for the Distinguished Young Holstein Breeder award.

### About the awards:

- The Elite Breeder Award honors a living Holstein Association USA member, family, partnership, or corporation who has bred outstanding animals and thereby made a notable contribution to the advancement of U.S. Registered Holsteins.

- The Distinguished Leadership Award is given to an individual who has provided outstanding and unselfish leadership that has contributed to the improvement of Holstein Association USA and/or the dairy industry.

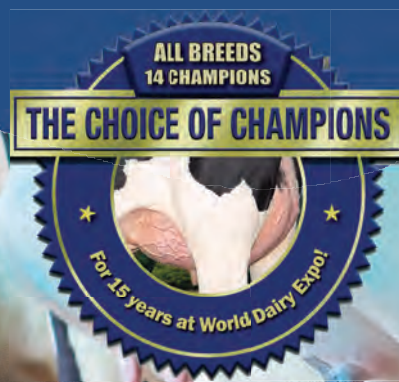
- The Distinguished Young Holstein Breeder Award recognizes significant accomplishments of young Registered Holstein® breeders ages 21 to 40. Submissions can be made for individuals, a couple, or business partners. The winning applicant will receive travel and lodging expenses (for up to two people) to National Holstein Convention, complimentary tickets to the Convention banquet, and a \$2000 cash award.

Award applications are available on the Holstein Association USA website at [www.holsteinusa.com/awards/individuals](http://www.holsteinusa.com/awards/individuals)

Nomination applications must be post-marked by January 31, 2024.

## “Faster, better milkouts and higher quality milk. Udder Comfort is the one that works!”

— Matt Nealy



See us at  
**PA Dairy Summit**  
 Lancaster, Feb 7-8  
**NY Farm Show**  
 Syracuse, Feb. 22-24  
 Booth D708



“We decided to get more regimented with our use of Udder Comfort™ and saw our SCC drop from 200,000 to 120,000.

“Whether they have visible swelling, or not, we make sure to apply the Udder Comfort spray to all fresh udders after each milking during the first 5 to 7 days after they calve. We see SCC drop right down.”

— Kyle Hirt, Mithva Farms, New Woodstock, NY  
 100 cows, 80 lbs, 120,000 SCC



“Udder Comfort is something we don't cut. It gets swelling out faster. We see faster better milkouts and higher quality milk.

“We do every fresh cow for a week after calving. We mark high-count cows on DHIA and do them too.

“We tried other brands, but they don't work. Udder Comfort is the one that works!”

— Matt Nealy, Nealand Farms, Newville, PA  
 400 cows, 92 lbs, 100,000 SCC

“Udder Comfort is the best product for fresh cows, any type of swelling, hard quarter, elevated SCC or mastitis. We got back on this product for the results. With the Udder Comfort

Battery-Operated Backpack Sprayer, we do fresh udders after each milking for 5 days. It really helps our milk quality.”

— Brad Palmer, Pigeon Cove Farms, Warfordsburg, PA  
 440 cows, 94 lbs, 140,000 SCC



## UDDER COMFORT™

Quality Udders Make Quality Milk

### Her Comfort is Our Passion!

Softer udders ⇨ Faster milking  
 Better quality ⇨ MORE MILK

1.888.773.7153  
 uddercomfort.com



Helping reach their potential since 1998!



For external application to the udder only, after milking, as an essential component of udder management. Wash and dry teats thoroughly before milking.



USPS 509450 ISSN 0745-7553

Published by Farmshine LLC  
 in Lancaster County, Pennsylvania.

1-YR. SUBSCRIPTION - \$20.00  
 INTERNATIONAL SUBSCRIPTION - \$40.00  
 Published every Friday except the week of Christmas

Dieter Krieg, Editor & Publisher

Melissa Johnson, Advertising Representative

Ashley Denlinger, Advertising Representative

Sue McCloskey, Secretary

Douglas Denlinger, Production Manager

Send subscriptions, news & advertising to:  
 FARMSHINE

342 E. Main St., Suite 201, Leola, Pa. 17540

Phone 717-656-8050 | Fax 717-656-8188

[news@farmshine.net](mailto:news@farmshine.net) | [ads@farmshine.net](mailto:ads@farmshine.net)

Periodicals postage paid at Lancaster, PA  
 and at additional mailing offices.

POSTMASTER: Send Address Corrections To:  
 FARMSHINE

342 E. Main St., Suite 201  
 Leola, Pa. 17540

Copyright © 2023. Printed in USA. All rights reserved. No part of this publication may be reproduced in any form without prior written permission by the publisher. Information gathered herein is from resources considered reliable. Accuracy, however, cannot be guaranteed. All printed material is intended for your information and reading enjoyment and is not meant to disrespect or harm any group or individuals. Ads appearing in this paper are not to be considered as an endorsement by Farmshine for products or services offered.

Farmshine's staff reserves the right to refuse any and all material, including articles and advertisements that they determine do not fit the objectives of Farmshine.

**LETTERS to the EDITOR****Pennsylvania Farm Bureau explains strategic involvement****Editor:**

Pennsylvania Farm Bureau (PFB) has been advocating tirelessly, since 2010, to assure whole milk and two percent milk returns to schools' lunch menus. As PFB's past president, I can attest to my countless meetings both with U.S. legislators and state legislators, where my ask was for them to support legislation that would bring whole milk back in schools. Additionally, on March 30, 2022, I held a press conference along with Pennsylvania State Representatives John Lawrence and Clint Owlett to show support for their bill that would give schools in the Commonwealth the option to serve whole milk.

PFB has been fighting both at the state and federal levels to get whole milk back in schools because our members know children

are missing out on the 21 essential minerals and 13 vitamins necessary for healthy development. It is no secret on Capitol Hill or in Harrisburg that Farm Bureau wants to see whole milk back in schools because I along with our members have been very vocal about the issue.

The agriculture industry is about being a team, so PFB used their connections and resources to help Representative G.T. Thompson pass H.R.1147, the Whole Milk for Healthy Kids Act. Collaborating with other organizations like 97 Milk is how the job gets done. Our members made it clear to staff for more than a decade that bringing whole milk back in schools was a priority for the organization.

Therefore, working with other interest groups towards a common goal, was our

winning strategy. Not one single person I interacted with at PFB, nor our agriculture community, disagreed that whole milk should not be brought back in schools. Everyone was on board the train of whole milk for our students.

Our staff knows that legislators listen to their constituents. Hence, PFB strategically pushed an Action Alert out the morning of December 13 asking our members to send their Representative an email supporting H.R.1147. We know our Congressional offices receive many emails, so putting it at the top of the inbox on the day of the vote was the needed approach.

Our government affairs team always has a strategy, and their plan worked because there were only four no's in the Pennsylvania

delegation. Moreover, H.R.1147 was reported out of the Rules Committee on December 11 with floor vote being scheduled on December 12, so our staff was working on a quick turnaround for an Action Alert.

I understand that cannot all be credited to our organization, but we contributed to this win. The agriculture industry, alongside Representatives Thompson and Kim Schrier, put all their efforts towards making this historic legislative accomplishment happen in the House. I am proud as a past president of PFB that our hard work over these past 10 years is finally starting to pay off. Now, let's get H.R.1147 passed in the Senate and on President Biden's desk!

— Rick Ebert,  
Westmoreland County

**Editor:**

It was a proud day at Pennsylvania Farm Bureau (PFB) when H.R. 1147, the Whole Milk for Healthy Kids Act passed the United States (U.S.) House of Representatives on December 13. As a previous State Board Director and 2023 Chair of the Dairy and Farm Policy Committee, I saw first-hand the countless hours our staff, county Farm Bureaus, and leadership dedicated to assuring H.R.1147 was successful.

My family owns and operates Painterland Farms, and my nieces sell their well-known Painterland Sisters Skyr whole milk yogurt. As a dairyman, I know the health benefits of whole milk, especially for growing children. When an unfortunate and unscientific change was made in 2010 that eliminated whole milk in schools, I knew our organization's members were not going to stay quiet.

We enacted policy over a decade ago recommending "all milk in Pennsylvania schools and prisons be 2% or whole milk, including flavored milk." Since then, our members including myself have met with their state and federal legislators year after year advocating for legislation to be passed reversing Congress' 2010 decision.

When PFB's Dairy and Farm Policy Committee met in February 2023, the first objective each committee member agreed to was to have a heavy emphasis on getting whole milk passed at the federal level. Not to say that our committee did not care about whole milk in the past, quite the opposite. Rather, they were really getting fed up as USDA's Food and Nutrition Service proposed more harmful changes to the dairy section of the dietary school guidelines. It came down to enough is enough. When our organization

puts our mind to something, change happens, and that is exactly what happened when the Whole Milk for Healthy Kids Act was passed thanks to our members' continued advocacy in D.C.

Staff and PFB members worked around the clock since it passed out of the Education and Workforce Committee on June 30 to get it on the floor by 2024. Between AFBF's letter sent to Congressional Members on December 8 to PFB's Action Alert on December 13, our Farm Bureau staff had a strategy going into H.R.1147's vote and that was evidently a winning strategy. I understand that my legislators' offices get inundated with emails every day, so staff's plan to have the Action Alert going out the morning of the vote was well thought out. It needed to be at the top of House staffers' inboxes, so it did not get lost with other emails and they were re-

minded to let their boss know Farm Bureau would like them to vote yay on H.R. 1147.

Although PFB members played a significant role in getting H.R. 1147 passed, we were not the only ones fighting to get whole milk back in schools. Industry stakeholders and interest groups were also crucial in getting the bill traction and the attention it needed to convince 330 House members to vote yay with 13 out of 17 Pennsylvania House Members in favor of the bill. It was awesome to finally see our meetings, press conferences, letters, and much more pay off, when the House passed H.R. 1147.

As I said in the beginning, I am proud to call myself a PFB member because I saw how we helped get one step closer to having the option of whole milk in schools.

— John Painter II  
Tioga County

# Prepare Now for Winter!

## Durable Ag Curtains



### Complete Curtain Systems with all the components you'll need

- High Quality 16 oz. Vinyl Curtain Material
- Galvanized Bird Wire
- Keder Tubing & Drive Motors



Available with: Manual Gear Drives or Fully Automated to Control Your Curtains 24/7



## SHADY LANE Curtains LLC

Bird-in-Hand, PA  
(717) 690-2003



**CALL  
NOW**

to Get In Our  
Schedule

**"The Nation's Industry Leader in Ag Curtains"**

# Farmshine Editorials

By Dieter Krieg  
*Farmshine Editor*



**'Well done is better than well said.'**

— Benjamin Franklin

## True heroes show up early, not when victory is near

Well, well ... we see that one individual's letter to the editor has caused two rebuttals to arrive, in which the offended "party" explains and defends its actions regarding efforts to bring whole milk back into our nation's schools.

While we are thankful for the support the Pennsylvania Farm Bureau may have given to this noble cause at some point, we're not convinced that they were ever on the front lines in this battle to correct a massive wrong. Not ever.

We repeat once more. It was Arden Tewksbury — and only Arden Tewksbury — who sounded an immediate alarm back in 2010 when USDA struck all but skim milk off of school breakfast and lunch menus. Tewksbury and his small group, the Progressive Agriculture Organization, a.k.a. Pro-Ag, spent

years going to Washington, delivering petitions, writing articles and making speeches. A few others soon came on board. But the Pennsylvania Farm Bureau was not among them. Unless PFB worked very quietly — even secretly — behind the scenes, they were indeed fence sitters until others such as Tewksbury, the Honorable Representative Glenn "GT" Thompson, the 97 Milk group and the unstoppable Bernie Morrissey had victory all but 100% assured. In football terminology, the ball was at the 1-yard line when PFB ran onto the field. Ditto for NMPF, (the National Milk Producers Federation), and DFA (Dairy Farmers of America). And the perennial champions of deceit — DMI (Dairy Management, Inc.) never even showed up at all, per orders of their puppetmaster, the United States Department of Agriculture. USDA was, after all, the mastermind behind taking 2% and whole milk away from school children ...

as well as the enforcer, if they didn't.

It's noteworthy here for sure, that *Farmshine* was not the exhibitors' first choice to supply whole milk at the recently held Keystone Farm Show. We stepped up to the plate because others stepped off. A bit timid, they were, thanks to the USDA hammer, which we can understand due to their being actual milk marketers. *Farmshine* is not. Neither is the Pennsylvania Farm Bureau.

So here's the challenge we have for the Pennsylvania Farm Bureau. Put your money where your mouth is. Next year, when whole milk is requested by the 97 Milk folks to hand out at the Keystone Farm Show, let's see you step up to the plate and pay for it.

Over the years, the pages of *Farmshine* have clearly and consistently documented

the work of the real heroes in Pennsylvania who aimed to bring whole milk back into America's school cafeterias. On the state level, it was Representative John Lawrence of Chester County who deserves mentioning since he truly and diligently championed the cause for whole milk in Pennsylvania's public schools. Then too, PFB showed up when the ball was at the 1-yard line.

We appreciate and applaud all of these true heroes for whole milk as a choice in schools because they ceaselessly gave their "all" right from the beginning. None of them were fence sitters. Neither did they allow themselves to be "bought off" or scared off.

As ever, we'll tell it as we see it. In the words of J.M. Weaver of Ohio, *Farmshine* provides: "The only true, grassroots, common sense information available nowadays."

## An open letter to Senator Robert P. Casey Jr.

Dear Senator Casey:

As someone who has a strong dislike for any government actions that remind me of barriers in the land where I was born, I beg you to become a sponsor of S. 1957, The Whole Milk for Healthy Kids Act.

The United States government has no more right to ban whole milk in schools than the Deutsche Demokratische Re-

publik had to wipe out nearly the full spectrum of liberties, opportunities and destinies from 1949 to 1989. I was there during my childhood and have never lost my disdain for corrupt regimes and unreasonable rules. Especially when they're imposed soviet-style. It's un-American.

I value my years behind the Iron Curtain, an experience which I share with millions of others who once lived in eastern European countries. For me, it was the former German

Democratic Republic (a.k.a. "East Germany"). This background allows me to appreciate freedom all the more deeply, while at the same time easily recognizing encroachments to what we all hold dear. Any escapee or refugee will tell you that.

Incidentally, the G.D.R. — despite its deliberately misleading name — was neither democratic nor a republic. It was a Soviet-controlled, iron-fisted, communist regime where individual freedoms were non-existent. Unless, of course, you were a communist party member. My father could have had a good life under the hypocritical and corrupt-to-the-core regime, had he accepted their brand. Instead, he bravely stood up for what was right ... and ended up as a political prisoner. He risked being shot.

I could go on and on about that, but prefer to keep this plea curtailed and more to the point. Whole milk. Whole milk as a choice in schools, along with 2% milk. It's time to do what's right.

Take note, please, of the latest scientific facts about whole milk. It's all good and I know that the evidence has already been presented to you multiple times.

Aside from the "science," please also realize that we do in fact have indisputable proof for whole milk being the most perfectly designed nutrition available to mankind, because it is ...

God's recipe.

As such, I am absolutely certain that all of the fussing and legislation over whole milk — whether offered in schools or anywhere — boils down to foolishness at best and unacceptable tyranny at worst.

The prohibition of a healthy, natural, nutritious, delicious and true dairy drink must end. Your support for this worthy cause will be appreciated and the benefits will become apparent quickly through truly healthier children and in due course a stronger population of Americans.

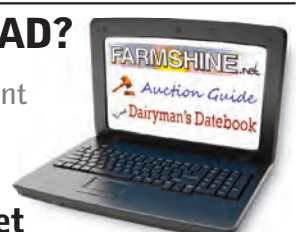
Very sincerely yours, (signed) Dieter Krieg

P.S. I had the privilege of meeting your father at an Ag Progress Days meeting many years ago and was very impressed with his stand on many important issues, not just agricultural ones. Indeed, he embodied what we used to call "presidential timber." A man of principles; a man we could trust and count on. Like so many other good people, he left us too soon.

### LOOKING AHEAD?

Find auction and event listings to fill your calendar online:

[www.farmshine.net](http://www.farmshine.net)



# THE WINNING COMBINATION

More milk. Lower SCC. More cows pregnant.



DAIRY producers just like you across the USA, simply feed **IMMU-PRO & STAND STRONG DAILY.**

- ☆ Gain Improvement
- ☆ Increase Profits
- ☆ Reduce Problems

Start today - 920.650.1631  
[www.alphageneticsinc.com](http://www.alphageneticsinc.com)



CALL 202-224-3121 and tell your Congressmen and Senators to co-sponsor. Vote yes to HR1147 & S1957 "WHOLE MILK FOR HEALTHY KIDS ACT"

SUPPORT 97milk.com. They support you!



HAVE YOU CALLED YOUR SENATORS YET?  
GOOD NEWS 24 HRS. 1-605-477-2279



## Murky from page 1

processors to deal with a 'too-high' minimum price – other than to opt out of regulation for manufacturing plants (de-pool), but that fluid milk plants have no ability to opt out. They are required to remain regulated by FMMOs.

Stephenson stated: "Manufacturing is by far the largest use of milk in our dairy industry." He pegged Class I fluid use at 18% of total U.S. milk production (regulated and unregulated). Therefore, he said, manufacturing use should no longer be treated in the FMMO system as "the trailing spouse in the marriage."

On MIG's behalf, he introduced a new way of looking at the marginal value between Class III and Class I, and a mechanical change that could be made in how the \$1.60 base differential is paid as needed directly to producers, cooperatives and plants that actually

supply milk to Class I plants, instead of being paid to the FMMO pools.

The \$1.60 became a uniform part of the Class I price in the 1999 Order Reform. About 40 cents of this \$1.60 was included to represent the cost of farmers transitioning from Grade B to Grade A. The rest represents 'give up' costs from manufacturing to Class I and balancing costs to serve the fluid market.

Stephenson backed up MIG's assertion that farmers don't need any of the \$1.60 because virtually all milk produced today is now Grade A. During cross examination, NMPF attorneys brought up the cost farmers have to maintain Grade A status. Don't their costs count here?

Undeterred, Stephenson suggested that these costs are accounted for in the classified pricing since all milk for all uses is Grade A, today. He said that USDA uses 'minimum pricing' as a tool so that the regulated price

leaves space for voluntary premiums that processors can pay to "incentivize something else."

"Being chronically above the market-clearing price creates a surplus product, which the market can't clear," he said. "Our dairy markets have always walked on a knife's edge. Being plus or minus 1% on milk supplies can cause some pretty big swings in prices as the markets do attempt to clear that."

As for removing the \$1.60 uniform price differential either from the price or the pool, Stephenson said it is like "other premiums" that have become "commoditized."

He likened it to the rbST premium and milk quality premiums, saying those premiums have also become "commoditized."

For example, when farmers were first asked to give up rbST and sign pledges, a premium was offered. Now, that premium is not paid, he said, because the practice of abandoning rbST is now "commoditized."

Likewise, said Stephenson: "Milk quality (low SCC) has improved so much that those premiums are not there anymore. They have also become commoditized."

**So, the better dairy farmers get, the more their incentive premiums — and even big chunks of their regulated minimum price — are at risk to be cannibalized by milk buyers because the farmers have now done what they've been incentivized to do, so they don't need to be paid to do it.**

MIG also seeks to stop NMPF's proposal to tweak and raise location differentials across the Class I surface map, putting on the stand some of their members to show how unfair competition arises between independent bottlers and cooperatively owned fluid milk plants in the same region.

For his part, Stephenson noted the concept of pulling the \$1.60 base differential out of the pool may discourage non-productive dis-

tant pooling.

This week was certainly eye-opening as MIG is all about the processor costs with zero regard for producer costs. They even put an HP Hood representative on the stand who included the \$120 million recently announced for expanding the Extended Shelf Life (ESL) plant in Batavia, NY as a "balancing cost," that somehow justifies giving back the base differential to processors even though processors can pass their costs on to consumers, whereas farmers cannot.

Under cross examination, Hood's representative admitted that plant-based beverages are also bottled in those so-called ESL 'milk balancing' facilities, along with premium products like Lactaid.

Meanwhile farmers continue to incur costs associated with a whole host of improvements that were at one time incentivized. It appears the processors expect farmers to forgo being paid for those costs simply "because everyone's doing it" and incentives are no longer needed.

The idea here is to deflate regulated minimum prices as much as possible in search of the elusive and not-well-defined Holy Grail: the market-clearing price.

Processors want cheaper milk, and they've got multiple proposals to accomplish that. They want to deflate the regulated minimum milk price to free up their ability to pay premiums for "something else."

In fact, in his testimony, Stephenson admitted that as these costs and premiums are "commoditized," space is freed up to "pay premiums for something else."

What is the "something else" that processors will pay to incentivize after they potentially succeed in reducing the regulated minimum price in multiple ways through multiple proposals?

Are climate premiums the next thing coming once the milk price is deflated far enough? Will USDA buy what MIG and IDFA are selling?

Stay tuned.

## \$135,000 raised for the undernourished

HARRISBURG, Pa. — The 2024 Fill a Glass with Hope® campaign kicked off at the Pennsylvania Farm Show earlier this month, ultimately raising \$135,500 in donations to feed Pennsylvania's food-insecure families. To date, the campaign has provided more than 36 million servings of fresh milk to nourish those in need.

Fill a Glass with Hope was initiated in 2015 by Pennsylvania dairy farmers who wanted to ensure families in need had access to fresh, nutritious milk to feed their families. A partnership was formed between American Dairy Association North East, Feeding Pennsylvania's nine-member food banks, and the Pennsylvania Dairymen's Association.

"Milk is one of the most requested items at food banks across the state," said Feeding Pennsylvania CEO Julie Bancroft. "Fill a Glass with Hope allows food banks to secure more nutritious, protein-rich milk to help Pennsylvanians experiencing hunger thrive."

"Dairy farmers make it their life's work to provide nutritious food for all people, so the Fill a Glass with Hope campaign is very meaningful to us," said Lolly Leshner, Pennsylvania Dairy Promotion Program chair and Berks County dairy farmer. She applauded everyone who is helping their neighbors who are experiencing hunger.

Leshner joined Pennsylvania Agriculture Secretary Russell Redding, along with representatives from Feeding Pennsylvania and Pennsylvania Dairymen's Association Executive Director Dave Smith, former Pittsburgh Steeler and dairy advocate Charlie Batch, and the Pennsylvania Dairy Princess and Alternates for the announcement at the Pennsylvania Farm Show.

"We're so fortunate to have such dedicated partners who share our commitment to securing the availability of this mealtime staple for all Pennsylvanians," said ADA Northeast CEO John Chrisman.

When it comes to

# DAIRY SUPPLIES

WE'VE GOT YOU COVERED

Our Route Sales team can keep your dairy farm supplied with everything you need!

**JBZ DAIRY ADVANTAGE**

Call 717-354-8030  
www.jbz dairy.com

**DeLaval** INDEPENDENT AUTHORIZED DEALERSHIP



**Buy the MBS19 Bedding Spreader and get 10% off all bedding products for a year!**

## Auction Guide

**JAN. 22**, 6 p.m. Woodmohr Northern Lights Online Dairy Sale, cowbuyer.com. Sale managed by Wendy and Jon Schmidt.

**JAN. 23-JAN. 30**, January NetAuction Edition 2, different locations. Sale managed by RTI Auctions.

**JAN. 24**, 9 a.m. Rescheduled King Farm Auction, Lititz, Pa. Sale managed by Tim Weaver Auction Service.

**JAN. 24**, 10:30 a.m. Dairy Cow & Heifer Sale, New Holland Sales Stables, New Holland, Pa. Sale managed by New Holland Sales Stables.

**JAN. 25-JAN. 30**, Estate of John Kasmer, Jr., NetAuction Edition 2, Elba, N.Y. Sale managed by RTI Auctions.

**JAN. 25**, 10 a.m. Special Dairy Cow & Heifer Sale, Brubaker's

Quality Dairy Sales, Shippensburg, Pa. Sale managed by Brubaker's Quality Dairy Sales.

**JAN. 26**, 7:30 a.m. Horse Consignment Sale, Penns Valley Livestock, Centre Hall, Pa. Sale managed by Penns Valley Livestock.

**FEB. 2**, 8 a.m. Special Catalog Draft Horse Sale, New Holland Sales Stables, New Holland, Pa. Sale managed by New Holland Sales Stables.

**FEB. 3**, 10 a.m. Estate of Allen Tignor (Deceased) and Benjamin B. Ellis, Inc. Absolute Auction, Bowling Green, Va. Sale managed by Roger Miller Auctions & Appraisals.

**FEB. 8-9**, 10 a.m. Conrad Farms Reg. Holsteins Complete Dispersal, Grafton, Ohio. Sale co-managed by KIKO Auctioneers and Daniel Brandt.

## Advertiser's Index

Albright, Daniel.....21	New Holland Sales Stables...20
Alpha Genetics (Immu-Pro)...4	Nicholas Meat.....19
Beiler Industries.....22	Oregon Water Conditioning.14
Beitzel Spraying.....13	Pa. Holstein Association.....22
Blain Supply.....10	Pa. No-Till Alliance.....6
Brubaker's Dairy Sales.....20	Patz.....19
Brubaker, Rufus Refrigeration .6	Penns Valley Livestock.....20
Cedar Crest Equipment.....23	Petersheim Cow Mattresses..15
Daniel's Farm Store.....7	Power Systems Electric.....4
DHIA Pages.....8-11	Precast Systems.....21
Ephrata Agway.....10	R&J Dairy Consultants.....13
Fisher, Eli Construction.....15	Rigidply Rafters.....9
Gehm, L.R.....9	Rissler, I.H. Manufacturing.....9
Genex.....14	Rob-See-Co.....12
Green Equipment.....22	Select Sires Member Coop...17
Horst Grain Roasting.....20	Shady Lane Curtains.....3
JBS.....12	Sollenberger Silos.....21
JBZ Dairy Advantage.....5.7	Sturdy Built Manufacturing....7
Keystone Concrete Products.13	Timmel, A.R.....22
Kreeger & Associates.....18	Triple Hil Sires.....24
Leaverton, Kevin.....22	Triple M Farms.....22
Lira Gold.....11	Udder Comfort.....2
Mid-Atlantic Triply Ceilings....10	Weaver, Tim Auction Service 21
Miller, Roger Auctions.....21	Willow Road Silo Doors.....22
Morrissey Insurance.....16	Woodmohr Jerseys.....20
Mueller.....16	Zartman Farms.....15
Nelson & Sons Concrete Gr.....6	Zimmermans Glass Storage.....22

## Dairyman's Datebook

**JANUARY 23**, 8 a.m. Soil Health meeting, Farm & Home Center, 1383 Arcadia Road, Lancaster, Pa.

**JANUARY 23**, 9:30 a.m. Farm succession workshop, York HACC Building: 2010 Pennsylvania Ave., York, Pa.

**JANUARY 23**, 11 a.m. Premier Select Sires Customer Appreciation meeting, Shady Maple Smorgasbord, East Earl, Pa.

**JANUARY 25**, 8 a.m. Soil health meeting, Normandy VFW Banquet Hall, 5550 East State Street, Hermitage, Mercer County, Pa.

**JANUARY 25-26**, Northcentral Ohio Grazing Conference, Mt. Hope Event Center, 8074 State Route 241, Mt. Hope.

**JANUARY 27**, Maryland Holstein Junior Jamboree, Carroll County Extension Office, 700 Agricultural Center Drive, Westminster.

**JANUARY 30**, 9 a.m. Franklin County Crops Day, Kauffman Ruritan Community Center, 7289 Ruritan Drive, Chambersburg, Pa.

**JANUARY 30**, 9 a.m. King's Agriseeds informational meeting at The Rail Center, 224 Young Road, Lewisburg, Pa.

**JANUARY 30**, 9:30 a.m. Rob-See-Co. Forage Summit about "real silage dairy" Hilton Garden Inn, 959 Dover Road, Wooster, Ohio.

**JANUARY 31**, 8:45 a.m. R & J Dairy Consulting Dairy Seminar, featuring Dr. David Kohl and Dr. Paul Fricke, Shady Maple Smorgasbord, 129 Toddy Drive, East Earl, Pa.

**JANUARY 31**, 9 a.m. Crop Production Seminar presented by Bottom Line Ag Supply, Yoder's Restaurant, 14 South Tower Road, New Holland, Pa.

**JANUARY 31**, 9 a.m. King's Agriseeds informational meeting at Garden Spot Fire Company Station 1, 339 East Main Street, New Holland, Pa.

**JANUARY 31**, 9:30 a.m. Rob-See-Co. Forage Summit about "real silage dairy" The Silk Mill, 328 East Main Street, New Holland, Pa.

**FEBRUARY 1**, 9:30 a.m. Cornell Cooperative Extension NWNY Dairy Day at The Chalet at East Hill Creamery, 346 Main Street South, Perry, N.Y.

**FEBRUARY 1**, 9 a.m. King's Agri Seeds informational meeting at Woodsmen of the World, 3045 John Wayland Highway, Dayton, Va.

**FEBRUARY 1**, 9:30 a.m. Rob-See-Co. Forage Summit about "real silage dairy" at Mrs. Gible's, 7325 Molly Pitcher Hwy., Greencastle, Pa.

**FEBRUARY 1**, 6:30 p.m. Taste of Maryland Agriculture Celebration at Live! Casino & Hotel Maryland at Arundel Mills, 7002 Arundel Mills Circle 7777, Hanover, Md. For more information, please call Gail Yeiser: 410-353-3069.

**FEBRUARY 2**, 9 a.m. King's Agriseeds informational meeting at Middletown Fire Department, 1 Fireman's Lane, Middletown, Md.

**FEBRUARY 2**, 9:30 a.m. Rob-See-Co. Forage Summit about "real silage dairy" at Benton Fire Hall, 932 State Route 14-A, Penn Yan, N.Y.

**FEBRUARY 2-3**, noon to noon, New York Farm Bureau Young Farmers & Ranchers Leadership Conference at Cornell University. See [www.nyfb.org/events](http://www.nyfb.org/events) to register.

Rufus  
**Brubaker**  
Refrigeration LLC  
Toll Free 1-866-665-3525

**New & Used  
Quality Milk Tanks**

400 Gallon      1000 Gallon  
700 Gallon      1500 Gallon  
800 Gallon

**Walk-In Coolers and  
Freezers, Panels and  
Doors Available.**

**NELSON & SONS**  
CONCRETE GROOVING

Womelsdorf, Pa. 610-589-1030  
Serving PA & Surrounding States

Save Cows,  
Save Your  
Profit Margins

[www.NelsonandSonsConcreteGrooving.com](http://www.NelsonandSonsConcreteGrooving.com)

### Premier Select Sires invites members to meeting, Jan. 23

TUNKHANNOCK, Pa.—Premier Select Sires Inc. will hold a customer appreciation meeting on Tuesday, January 23 from 11 a.m. to 2 p.m. at Shady Maple Smorgasbord, 129 Toddy Drive, East Earl, Pa. Attendees can enjoy a meal, cooperative updates, door prizes, and more.

Kirk Sattazahn, Premier vice president of marketing and development, and Rick VerBeek, Select Sires senior Holstein sire analyst, will provide a brief program.


An RSVP is appreciated. Please call (855) 209-0388 ASAP and indicate your name and the number of guests who will be in attendance. This toll-free number will also serve as an update line in the event of inclement weather.

 PENNSYLVANIA NO-TILL ALLIANCE  
**SOIL HEALTH MEETINGS**  
FREE to Members • \$20 for Non-Members • \$25 Late Registration (after January 16)

<b>January 23, 2024</b> Lancaster Farm & Home Center (1383 Arcadia Rd, Lancaster)	<b>January 25, 2024</b> Normandy VFW Banquet Hall (5550 East State St, Hermitage)
---	---

**PROGRAM FOR BOTH MEETINGS**

8 am	Registration & Visit Exhibits
8:45 am	Welcome & Announcements
9 am	Keynote Presentation, <i>Jill Clapperton</i>
10 am	Can No-Till Be Successful in Heavy Clay Soils? <i>Speaker / Panel Discussion</i>
11 am	How (and WHY) We Manage Soil Health on Our Farms <i>Farmer Panel</i>
12 pm	Lunch & Visit with Exhibitors, followed by Sponsor Remarks
1:15 pm	Applying Soil Health Principles to Your Farm, <i>Jill Clapperton</i>
2 pm	What Are We Trying That's New or Different? <i>Farmer Panel</i>
3 pm	Funding Updates, <i>Doug Wolfgang, State Conservation Commission</i> Local Agency Updates
3:30 pm	Closing Comments & Adjournment

<p>January 23 EASTERN PA</p> 	<p>To Pre-Register, visit the QR code or contact Jay Howes at 717-574-4510 or <a href="mailto:jhowes@pennag.com">jhowes@pennag.com</a></p>	<p>January 25 WESTERN PA</p> 
--	--	--

 **Power Systems Electric Inc.**

Emergency Generator Systems & Service  
885 South Railroad Street, Myerstown, Pa 17067

Sales, Service, & Rentals  
Providing service for most brands

 **Maintenance Programs**  
New & Used Gen Sets, Transfer Switches, PTO Gens.

**24 HR EMERGENCY SERVICE**



[info@psegenerators.com](mailto:info@psegenerators.com)  
[www.psegenerators.com](http://www.psegenerators.com)

For all your generator needs call  
(717)933-5617

## Junior Holstein members shine in virtual interview contest

BRATTLEBORO, Vt. — Young dairy enthusiasts from coast to coast practiced their professional skills during the 2023 Virtual Interview Contest, which helps them refine their resume writing and interview skills. Essentially, it gives them practical knowledge for future opportunities. The contest was held for three age groups, determined as of January 1. Top placings were:

• **Senior division (ages 18-21)**

1. Dale Freier III, New York
2. Clarissa Ulness, Wisconsin
3. Kylie Konyon, Wisconsin

• **Intermediate division (ages 15-17)**

1. Madison Mowrer, Pennsylvania
2. Elsie Donlick, New York
3. Samuel Mell, Wisconsin

• **Junior division (ages 12-14)**

1. Alison Gartman, Wisconsin
2. Chloe Chapman, California
3. Sophia Nielsen, Michigan

Applicants submitted cover letters and resumes based on a mock interview scenario and were selected to move on to the second phase of the contest based on their combined

cover letter and resume scores. During the second phase contestants were interviewed by a panel of three judges. Final scores were calculated based on each applicant's cover letter, resume, and interview. Every participant receives constructive feedback from the judges to further enhance their interview aptitude.

"The virtual interview contest has been a valuable experience for me for several years as I have been able to improve my resume and cover writing skills as well as my interviewing skills," said Junior Holstein Association member Elsie Donlick of New York. "From participating in this contest, I now feel more confident in how my resume looks and how to answer interview questions. I enjoy participating in this contest because it helps me grow my professional career skills."

Cash prizes of \$250 for first place, \$100 for second place, and \$50 for third place will be awarded in the junior and intermediate divisions. In the senior division, youths will be given cash prizes of \$500 for first place, \$250 for second place, and \$100 for third place.

## USDA program enrollment open

WASHINGTON, D.C. — The U.S. Department of Agriculture (USDA) has announced that agricultural producers can now enroll in the Farm Service Agency's (FSA) Agriculture Risk Coverage (ARC) and Price Loss Coverage (PLC)

programs for the 2024 crop year. Producers can enroll and make election changes for the 2024 crop year until March 15th.

For more information, contact your local USDA Service Center.



### We stock Bull Magna Silage/Mulch & Manure Forks



- New Euro flex spring steel fork for more flexibility
- Four cutting edges on each tine and 40% easier piercing
- Longer ash handles
- Silage Forks available in 5, 8 & 10 tine
- Manure forks available in 4 tine



### Bull and Bully Aluminum Shovels Forest Hill Poly Shovel with hemp fibers

Available at:

**Daniel's Farm Store LLC**  
324 Glenbrook Road, Leola, PA 17540  
717-656-6982 • Mon.-Fri. 7-6, Sat. 7-12



## PHA issues call to annual meeting

STATE COLLEGE, Pa. — The Pennsylvania Holstein Association invites all paid members and supporters of the Association to the 111th annual meeting on Friday, February 9, at the Hilton Scranton & Convention Center at 100 Adams Avenue in Scranton, starting at 1 p.m. There is lunch available prior to the meeting from 11:30 to 12:30.

Attendees must buy a ticket through Convention Registration for lunch. This notice of the annual meeting is given so that

PHA members can be advised to plan on attending.

The annual meeting will be combined with the board of directors meeting and will include the election of a president and vice-president. Also, reports from the Resolutions Committee, President, and Executive Director.

The Pennsylvania Holstein Association encourages your attendance. Please direct any questions to [contact@paholsteins.com](mailto:contact@paholsteins.com) or call 814-234-0364.

Thank you for reading **FARMSHINE**

**NOW FULFILLING PRESCRIPTION Rx ORDERS**

Free Standard Shipping with Any Size Rx Order for Full-Line Route Customers

**ORDER IN 3 EASY STEPS!**

**1**

OBTAIN A SCRIPT FROM YOUR VET

**2**

SHOW THE SCRIPT TO YOUR JBZ SALES REP

**3**

PRODUCTS WILL BE SHIPPED DIRECTLY TO YOU

- \$20 service fee if prescription is not already on file
- Free standard shipping on Rx orders over \$400

Call (717) 354-8030 [jbzdairy.com](http://jbzdairy.com)

**GALVANIZED**

**Slantbar & Straightbar Gates and Panels**

Less feed bunk competition allows more animals to eat uninterrupted

- Square tubular frame construction
- Divider bars are round tubing for smoother entry and exit
- Cow, heifer and calf sizes
- Detachable galvanized feedtroughs available for headlock and slantbar configurations

**Improve Your Feedbunk Management!**

Call 866-543-5116  
[sales@sturdybuiltmg.net](mailto:sales@sturdybuiltmg.net)  
260 S. Muddy Creek Rd. Denver, PA 17517

Request a FREE Feedbunk Equipment Guide!





DECEMBER 2023

Adams County

Table with 4 columns: Farm Name, HO, XX, and values. Includes JOBO HOLSTEIN FARM, ROUND HILL DAIRY, etc.

Armstrong County

Table with 4 columns: Farm Name, XX, and values. Includes DON HOUSER.

Beaver County

Table with 4 columns: Farm Name, HO, and values. Includes BRUNTON DAIRY.

Bedford County

Table with 4 columns: Farm Name, HO, and values. Includes ADAM NOLT, SINGING BROOK FARMS, etc.

Berks County

Table with 4 columns: Farm Name, HO, and values. Includes SUMMIT LEVEL FARM, LAMAR GOCKLEY, etc.

Table with 4 columns: Farm Name, HO, and values. Includes KEVIN & JANICE BURKHOLDER, WOODEN BRIDGE FARM, etc.

Table with 4 columns: Farm Name, HO, and values. Includes SUMMIT LEVEL FARM, WOODEN BRIDGE FARM, etc.

Table with 4 columns: Farm Name, HO, and values. Includes EVERETT NEWSWANGER, MOUNTAIN VIEW HOLSTEINS, etc.

Blair County

Table with 4 columns: Farm Name, HO, and values. Includes PENN ENGLAND LLC., MILL HILL FARMS, etc.

Table with 4 columns: Farm Name, HO, and values. Includes MERLE & PRISCILLA FOX, SMITH HOLLOW FARMS, etc.

Bradford County

Table with 4 columns: Farm Name, HO, and values. Includes JAY GOOD & BEN & KARLA, SOUTHMONT FARMS, etc.

Bucks County

Table with 4 columns: Farm Name, HO, and values. Includes CROOKED ACRES DAIRY.

Table with 4 columns: Farm Name, HO, and values. Includes TANNERS BROS. DAIRY, DAVID & JOSHUA BISHOP, etc.

Cb/Cmn/Crb Counties

Table with 4 columns: Farm Name, HO, and values. Includes THOUSAND HILL DAIRY, THOUSAND HILL DAIRY, etc.

Centre County

Table with 4 columns: Farm Name, HO, and values. Includes PENN VIEW, DAN & PENNY ULMER, etc.

Chester County

Table with 4 columns: Farm Name, HO, and values. Includes MARILYN & DUANE HERSHEY, DYLAN BRANTNER, etc.

Table with 4 columns: Farm Name, HO, and values. Includes J. DAVID LAIR, DELMAR SENSENIG, etc.

Clearfield County

Table with 4 columns: Farm Name, HO, and values. Includes JOE & KRISTEN LUSBY, JOHN S. BLANK, JR., etc.

Table with 4 columns: Farm Name, HO, and values. Includes PRISELAC DAIRY.

Clinton County

Table with 4 columns: Farm Name, HO, and values. Includes AMOS M. FISHER, CHRISTIAN & ESTHER GLICK, etc.

Cumberland County

Table with 4 columns: Farm Name, HO, and values. Includes ALLEN Z. BURKHOLDER, HILLSIDE HOLSTEINS, etc.

Table with 4 columns: Farm Name, HO, and values. Includes ZIMMERMAN DAIRY, ROCK SOLID DAIRY, etc.

Dauphin County

Table with 4 columns: Farm Name, HO, and values. Includes SYLVAN & RACHELANN PET, AMOS & NANCY KING, etc.

Lancaster DHIA logo and text: DHIA Milk Lab — Microbiology / Culture Lab — Forage Lab 1592 Old Line Road, Manheim, PA 17545

ANNIE METZLER INSURANCE logo and text: FARM INSURANCE Dairy, Poultry, Hog, Crop, Horse

Providing Premium Opportunities for Small and Mid-Sized Farms! Lanco-Pennland logo and text: Call today to inquire!

King's AgriSeeds logo and text: Focusing on - High Energy Forage for Healthier Cows & More Profit!

ECM Insurance Group logo and text: Proudly providing innovative insurance solutions to the Farm, Ranch, and Agricultural community

Planning on replacing an existing roof or constructing a new building? THINK LIFETIME THINK METAL

### Franklin County

BURK LEA FARMS	926 HO	31506	1345	997
ROARING CREEK FARM	154 HO	30247	1290	971
DAVID BAKER	112 HO	29176	1259	965
NEVIN WENGER	89 HO	29160	1180	945
AMOS BENEDICT	104 HO	27376	1210	931
WADE BENEDICT	118 HO	27550	1192	917
THOMAS PRIEST	204 HO	28347	1321	908
MARVIN CONLEY	67 HO	28217	1150	902
RAISING KANE FARM	211 HO	27746	1107	899
RICK WADEL	313 HO	25484	1139	893
CARL PUGH & SON LLC.	247 HO	27347	1166	890
STARR DAIRY	97 HO	27663	1088	883
TWOTOP HOLSTEINS LLC.	292 HO	27786	1158	881
LAMAR MARTIN	63 HO	26216	1076	868
IVAN BENEDICT	74 HO	26221	1084	863
EVAN HAWBAKER	122 HO	27614	1084	862
JAY HAWBAKER	124 HO	27212	1056	858
DAVID LEID	81 HO	26718	1076	846
CURTIS MEYERS	239 HO	25628	1120	839
CREEKSIDE DAIRY	162 HO	25934	1049	833
BROOK END FARM	124 HO	25863	987	817
EUGENE L. MARTIN & SONS	191 HO	24867	1052	816
ROOT CELLAR FARMS	98 HO	25848	1005	814
ARLIN HECKMAN	150 HO	23283	1004	779
DANA FUNK	152 HO	24755	1088	762
LICKING CREEK FARM LLC.	131 HO	23932	969	755
TY-TAN DAIRY	72 XX	21357	923	754
ANDREW GARBER	125 HO	23627	938	746
DUSTIN & CARRIE GINGERICH	169 JE	19614	955	731
EDWARD MARTIN	53 HO	23544	897	731
LESLIE HAWBAKER	93 HO	23527	910	728
MARCUS J. LAUVER	147 HO	20639	822	623

#### HERDS WITH A RHA SCC LESS THAN 200,000

LICKING CREEK FARM LLC.	HO	72	131
DANA FUNK	HO	76	152
JAY HAWBAKER	HO	85	124
AMOS BENEDICT	HO	92	104
NEVIN WENGER	HO	93	89
ROARING CREEK FARM	HO	96	154
IVAN BENEDICT	HO	101	74
LAMAR MARTIN	HO	105	63
EDWARD MARTIN	HO	105	53
TY-TAN DAIRY	XX	115	72
BROOK END FARM	HO	117	124
DUSTIN & CARRIE GINGERICH	JE	117	169
EVAN HAWBAKER	HO	122	122
MARVIN CONLEY	HO	128	67
BURK LEA FARMS	HO	131	926
TWOTOP HOLSTEINS LLC.	HO	132	292
RAISING KANE FARM	HO	137	211
DAVID LEID	HO	140	81
DAVID BAKER	HO	149	112
CURTIS MEYERS	HO	162	239
STARR DAIRY	HO	167	97
EUGENE L. MARTIN & SONS	HO	170	191
ROOT CELLAR FARMS	HO	172	98
ARLIN HECKMAN	HO	188	150
MARCUS J. LAUVER	HO	197	147

### Fulton County

MISTY MOUNTAIN DAIRY	477 HO	28883	1241	937
MARK KNEPPER	453 JE	21244	1126	799
KIN DU FARM	99 HO	19264	748	594

#### HERDS WITH A RHA SCC LESS THAN 200,000

MARK KNEPPER	JE	184	453
--------------	----	-----	-----

### Huntingdon County

DOUGLAS VARNER	231 HO	26778	1116	873
JOHN & TRAVIS COUCH	92 HO	23774	940	741
DOUGLAS VARNER	29 AY	20423	904	692

#### HERDS WITH A RHA SCC LESS THAN 200,000

DOUGLAS VARNER	HO	46	231
DOUGLAS VARNER	AY	58	29

### Indiana County

NATHANIEL STOLTZFUS	80 HO	27471	1105	876
MICAH BEILER	112 HO	25100	994	789

#### HERDS WITH A RHA SCC LESS THAN 200,000

NATHANIEL STOLTZFUS	HO	167	80
MICAH BEILER	HO	189	112

### Juniata County

LELAND EBERLY	77 HO	30515	1247	972
KELVIN MARTIN	127 HO	28348	1159	886
ZUGSTEAD FARM	756 HO	27802	1209	869
ZUGSTEAD FARM	36 HO	27614	1175	866
ZUGSTEAD FARM	36 HO	27112	1169	848
JASON L. WADEL	300 HO	26201	1125	845
SEVEN STARS DAIRY	360 XX	26040	1020	812
DWIGHT MARTIN	79 HO	25224	1018	800
HENRY-ACRES HOLSTEIN	232 HO	24617	1044	784
GARY MARTIN	81 HO	24409	965	775
KENNY KEENEY	92 HO	22224	972	738
R. E. SHEARER & FAMILY	85 HO	18262	681	557

#### HERDS WITH A RHA SCC LESS THAN 200,000

KELVIN MARTIN	HO	95	127
LELAND EBERLY	HO	103	77
GARY MARTIN	HO	116	81
ZUGSTEAD FARM	HO	134	36
SEVEN STARS DAIRY	XX	139	360
DWIGHT MARTIN	HO	142	79

### Lancaster County

NATHAN J. HORNBERGER	93 HO	32100	1356	1013
BRUBAKER FARMS	1414 HO	32344	1249	992
CLINTON HURSH	78 HO	30307	1168	974
JEFF SENSENIG	84 HO	29430	1249	959
MEADOW VISTA FARM	864 HO	30162	1256	959
MARK E. STOLTZFUS	54 HO	29261	1185	953
WEAVER HOMESTEAD FARM	205 HO	29703	1218	951
JOEL & PRISCILLA	42 HO	30265	1269	948
RANCKSTEAD FARM LLC.	92 HO	30303	1155	945
MARVIN LEE ZIMMERMAN	116 HO	29765	1265	944
J. RANDALL SENSENIG	104 HO	28628	1152	940
MEADOW SPRING FARM	522 HO	29608	1176	933
OLD PIKE DAIRY	149 HO	29818	1219	931
ANDREW L. WEAVER	108 HO	29760	1255	927
JONATHAN S. STOLTZFUS	77 HO	28830	1275	924
CLINTON L. SENSENIG	208 XX	28326	1188	921
KREIDER DAIRY FARMS	2054 HO	29024	1201	920
CENTRAL MANOR DAIRY	210 HO	29885	1236	919
MELVIN MILLER	78 HO	29673	1121	918
CHARLES FARMS, INC.	400 HO	29733	1239	915
PAUL DAVID GARMAN	62 HO	29084	1114	913
MATT AUMENT	72 HO	28006	1114	913

JAY & JOANNE WISE	82 HO	27190	1171	906
WANNERS PRIDE-N-JOY	896 HO	28483	1202	904
JOHN M. BURKHOLDER	144 HO	28154	1174	897
SPRING VALLEY DAIRY	89 HO	29021	1120	895
SWEIGART FARMS LLC.	518 HO	29282	1094	894
DELMAR SHELLY	57 HO	27643	1147	893
CURVIN MARTIN	81 HO	28753	1138	893
MELVIN L. BEILER	72 HO	29427	1055	893
FERNCREST FARM	76 HO	28299	1105	891
MAPLEHOFE FARM, INC.	136 HO	28071	1084	887
TRI-WILLOW FARMS	95 HO	28346	1087	885
RIVERSIDE ACRES	66 HO	27690	1107	884
LINNUS M. HURST	50 HO	27789	1091	884
TOM NAUMAN	71 HO	26877	1059	882
DELMAR J. OBERHOLTZER	95 HO	27522	1086	880
BENUEL K. ESCH	58 HO	27416	1087	876
WHEATLAND DAIRY	86 HO	29789	1036	876
MERVIN Z. HOOVER	60 HO	26856	1047	876
HATTI HOLLOW DAIRY	50 HO	28631	1128	875
DAVID RAY HOOVER	80 HO	27740	1046	875
STEPHEN GLICK	85 HO	27340	1108	874
EZRA S. HORST, JR.	125 HO	27895	1128	872
FOUR CORNER FARM	73 HO	28368	1161	870
DOUG & MICHELE ZEISE	120 HO	27300	1382	867
DAVID Z. BEILER	60 HO	28618	1088	865
JOLAN & KATIE MARTIN	97 HO	28616	1105	863
DANIEL K. SMUCKER	55 HO	26958	1121	862
CENTRAL MANOR DAIRY	14 XX	25785	1186	862
FRANKLIN VIEW FARMS	908 HO	26817	1103	859
GRAYWOOD FARMS	860 HO	27399	981	858
EDWIN N. ZEISET	78 HO	27020	1126	857
DAVID BAIR	101 HO	25677	1051	856
HILLSIDE MEADOWS FARM	194 HO	26231	1129	853
JESSE MARTIN	188 HO	26285	1039	853
INDIAN RUN	81 HO	27140	1039	851
CHARLES & ELAINE CRA	337 HO	26825	1119	851
JOHN & LAROSE HOOV	67 HO	26924	1081	851
JOSEPH E. CONLEY	66 HO	26614	965	850
MELVIN K. & ESTHER ST	60 HO	26568	1098	847
PAUL & MARK MILLER	122 HO	26610	1045	846
WHISTLING GLEN FARMS	160 HO	25604	794	846
KENNETH L. WENGER	78 HO	26279	1162	846
BURNELL R. GOOD	68 HO	26200	1111	846
G. ALPHUS STOLTZFUS	12 HO	26324	1132	846
ELAM KING	53 HO	26801	1122	845
OMAR A. & MARY F. STOL	53 HO	27708	1115	845
OMAR K. MILLER	54 HO	26725	1054	844
MELODY LAWN FARMS	79 HO	27535	1137	841
JOHN S. BEILER	65 HO	28090	1253	840
FAHNESTOCK FARMS	404 HO	25551	1026	838
DARYL SENSENIG	84 HO	26529	1091	838
BALMER BROTHERS	482 HO	26810	1076	837
AMOS S. KING, JR.	77 HO	25774	1041	835
EMANUEL J. KING	59 HO	27883	1132	834
LYNN ROYER	249 HO	25478	1050	831
STEVE K. BEILER	66 HO	25890	1066	831
JACOB E. SMUCKER	77 HO	25752	1080	831
CHRISTIAN LANDIS	50 HO	25720	1044	831
SYLVAN J. OBERHOLTZER	172 HO	25314	1093	829
DOUGLAS D. & ABIGAIL	73 HO	25970	1037	829
DAVID WISE	61 HO	25282	1024	828
L. MICHAEL WEAVER	83 HO	26396	1033	827

## Lancaster DHIA

BENUEL S. STOLTZFUS	44 HO	28404	1220	827
LINDEN HOLLOW FARM	94 HO	26589	973	826
SUNBEAM DAIRY	132 HO	26290	995	826
FOX MEADOWS FARM LLC.	91 HO	26411	974	824
BRIAN K. MULL	137 HO	26428	1041	824
G. ANTHONY ZIMMERMAN	90 HO	26246	1044	824
ALVIN N. SHIRK	54 HO	25650	1061	823
SUNNYBROOK DAIRY FARM	119 HO	24756	1079	822
SMYRNA PINE	51 HO	26909	1100	822
ERIC MARTIN	131 HO	25865	1081	821
JOHN B. STOLTZFUS	75 HO	26841	1023	821
JAMES S. ZIMMERMAN	78 HO	25626	1054	821
MELVIN GLICK	51 HO	27225	969	821
JOHN F. STOLTZFUS	45 HO	26060	1053	820
KEN & LISA WIKER	108 HO	25679	1021	819
J. & D. MARTIN	102 HO	26808	1041	817
SAMUEL B. LAPP, JR.	61 HO	26657	977	817
LEVI E. STOLTZFUS	55 HO	26529	1103	817
DANIEL S. STOLTZFUS	45 HO	25295	1040	816
CHRIST FISHER	51 HO	25404	1041	814
DELMAR NOLT	362 HO	26195	1067	813
DAVID S. KING	68 HO	26510	979	811
AMOS J. STOLTZFUS	39 HO	26196	1045	811
STEVIE K. STOLTZFUS	56 HO	25677	1021	810
HIDDEN HOLLOW LLC.	84 HO	24437	1062	809
WATERLOO FARM	113 HO	25186	1015	809
LEONARD N. FOX	56 HO	25618	981	808
DALE L. ZIMMERMAN	93 HO	25924	970	807
SKY VIEW DAIRY	160 HO	24940	997	807
OMAR S. FISHER	53 HO	25443	1006	807
SAMUEL N. SHIRK	47 HO	25583	927	806
ALVIN S. BEILER	59 HO	26619	1075	806
CARDINAL HOLLO FARM	75 HO	26322	989	805
JOHN D. KING, JR.	49 HO	25580	1021	804
REUBEN J. KING	55 HO	25849	931	803
MELVIN L. RIEHL	37 HO	24989	1061	803
KEVIN BALMER	117 XX	25147	1095	803
DANIEL L. STOLTZFUS	50 HO	25216	1033	802
IRVIN FARM	84 HO	25683	987	802
RED VALLEY HOLSTEINS	64 HO	24019	958	802
DARRELL L. & TINA RAN	71 HO	25006	1025	800
SAMUEL A. ESH	60 HO	26244	969	799
WALNUT RUN FARM	922 HO	25311	1028	796
STEPHEN M. STOLTZFUS	54 HO	25979	1062	796
STEPHEN B. LAPP	48 HO	26359	950	794
JOSHUA B. LANTZ	74 HO	25275	920	794
BENJAMIN K. STOLTZFUS	58 HO	25805	1063	793
SAMUEL L. BEILER	43 HO	25291	1007	793
ELAM B. MILLER	58 HO	25054	983	793
KEVIN MARTIN	64 HO	25765	1036	792
MATTHEW & KEVIN GR	113 HO	26342	1014	791
OMAR KAUFFMAM	67 HO	26413	1019	791
GALEN MARTIN	83 HO	25068	962	791
ELAM K. KING	60 HO	25738	1006	789
VIRGIL & JEAN GOOD	53 HO	24507	1002	





WHEATLAND DAIRY	HO	145	86
JACOB F. KAUFFMAN	HO	145	76
ERIC MARTIN	HO	146	131
SKY VIEW DAIRY	HO	146	160
DANIEL S. ESH	HO	146	42
JOHN D. KING, JR.	HO	146	49
JOHN F. STOLTZFUS	HO	146	45
EDWIN N. ZEISSET	HO	147	78
FAHNSTOCK FARMS	HO	150	404
OMAR K. MILLER	HO	152	54
JOEL M. BRUBAKER	HO	152	44
ENOS E. STOLTZFUS	HO	154	94
FOUR CORNER FARM	HO	154	73
WALNUT RUN FARM	HO	155	922
DANIEL L. STOLTZFUS	HO	155	50
JOHN S. BEILER	HO	156	65
JONATHAN S. STOLTZFUS	HO	157	77
LARRY LEINBACH	HO	158	52
DANIEL G. FISHER	HO	159	63
GAP-HOLLOW FARM	HO	159	63
FERLIN ZEISSET	HO	159	87
AMOS RIEHL	HO	160	66
LEVI E. STOLTZFUS	HO	160	53
JAMES S. ZIMMERMAN	HO	161	78
MATT AUMENT	HO	162	72
BURNELL R. GOOD	HO	163	68
HILL LAPP	HO	163	65
HILLSIDE MEADOWS FARM LLC.	HO	164	194
SAMUEL KING	HO	164	59
DANIEL E. BEILER	JE	165	60
INDIAN RUN	HO	166	81
BC ACRES	XX	166	48
ELMER S. MILLER	HO	167	51
GIDEON E. KING	HO	167	44
GRAYWOOD FARMS	HO	168	860
JOHN F. STOLTZFUS	JE	168	51
JACOB E. SMUCKER	HO	169	77
MELODY LAWN FARMS	HO	170	79
STEVE K. BEILER	HO	170	66
GALEN C. MARTIN	HO	170	61
AMOS F. ESH	JE	170	53
ALVIN N. SHIRK	HO	171	54
TOM NAUMAN	HO	171	71
RYAN E. ZEISSET	HO	172	95
JONATHON GLICK	HO	172	65
MEADOW VIEW FARM	HO	173	61
SAMUEL LAPP	HO	173	52
A. MICHAEL KING	HO	173	48
DARYL SENSENIG	HO	176	84
OMAR KAUFFMAM	HO	176	67
OMAR A. & MARY F. STOLTZFUS	HO	176	53
LANDYSHADE DAIRY FARMS LLC.	HO	177	385
JOHN & MARY FISHER	HO	177	42
BENJAMIN S. FISHER	XX	178	53
SHOEMAKER BROTHERS	HO	178	45
AMOS KING	HO	178	82
AMOS J. GLICK	HO	178	47
FERNCREST FARM	HO	180	76
MERVIN S. ZOOK	JE	180	56
MARK F. STOLTZFUS	HO	182	54
CHRIST FISHER	HO	184	51
AMMON, JR. & MARY LANTZ	HO	184	58
ALVIN S. BEILER	HO	184	59
BALMER BROTHERS	HO	185	482
J. RANDALL SENSENIG	HO	185	104
ELAM E. MILLER	HO	185	52
THOMAS ARROWSMITH	JE	186	54
MARLIN & DOREEN BECKER	HO	186	108
L. MICHAEL WEAVER	HO	187	83
HENRY B. KING	HO	187	41
JACOB B. FISHER	HO	188	42
SWEIGART FARMS LLC.	HO	189	518
JOHN K. KING	HO	189	51
MELVIN L. RIEHL	HO	190	37
JOSEPH S. ESH	HO	191	46
DAVID J. KULP	BS	193	54
DAVID Z. HORST	HO	194	40
DAVID S. SMUCKER	HO	195	55
DENNIS H. FREY	HO	196	45
ELMER J. BEILER	HO	196	70
DARRELL L. & TINA RANCK	HO	197	71
DELMAR J. OBERHOLTZER	HO	197	95
KREIDER DAIRY FARMS	HO	198	2054
J. & D. MARTIN	HO	198	102
NEIL M. GOOD	HO	198	129
MARK LEID	HO	199	70

### Lebanon County

WHISTLE WAY HOLSTEINS	72 HO	32146	1378	1033
FURNACE HILL HOLSTEINS	460 HO	30617	1268	1001
IRON VALLEY FARM	121 HO	29251	1284	951
HAMMERCREEK HOLSTEINS	93 HO	29078	1213	931
KEN-RE HOLSTEINS	196 HO	28860	1164	931
SHALLOW CREEK HOLSTEINS	107 HO	29136	1234	929
MARLIN M. HIGH, JR.	103 HO	29117	1168	919
GALEN ZIMMERMAN	79 HO	28256	1195	899
MEADOWBROOK HOLSTEINS	204 HO	27593	1094	892
DEEP RUN CRK HOLSTEINS	200 HO	27821	1055	891

JACOB STOLTZFUS	86 HO	27741	1100	886
SMITH-ZIEGLER DAIRY	193 HO	27741	1131	881
NATHAN NOLT	84 HO	27080	1093	871
CURVIN LAUVER	98 HO	27651	1119	863
RAYMOND B. ZIMMERMAN	77 HO	26746	1078	863
VILLA DALE FARM LTD.	181 XX	25965	1148	841
STONE-HAUS HOLSTEINS	91 HO	25609	1057	827
CHRISTIAN & KORIN GINGRICH	65 HO	25076	1031	826
NATHANIEL & KAYLA REIFF	138 HO	25220	1012	820
JAVIN OBERHOLTZER	113 HO	25665	1098	816
JAMES HUBER	64 HO	25348	1008	800
BRIAN L. MARTIN	60 HO	23781	1018	798
ELCO HOLSTEINS	146 HO	25375	1015	796
AUSTIN ZIMMERMAN	103 HO	24792	1025	782
WILLARD & RACHEL HORNING	186 HO	22963	912	725
LEVI L. ZOOK	64 HO	22497	979	709
AMMON LAPP	62 HO	19013	795	606

#### HERDS WITH A RHA SCC LESS THAN 200,000

JACOB STOLTZFUS	HO	79	86
NATHAN NOLT	HO	80	84
MEADOWBROOK HOLSTEINS	HO	82	204
HAMMERCREEK HOLSTEINS	HO	90	93
MARLIN M. HIGH, JR.	HO	98	103
CHRISTIAN & KORIN GINGRICH	HO	98	65
WHISTLE WAY HOLSTEINS	HO	100	72
NATHANIEL & KAYLA REIFF	HO	104	138
VILLA DALE FARM LTD.	XX	108	181
GALEN ZIMMERMAN	HO	110	79
KEN-RE HOLSTEINS	HO	121	196
RAYMOND B. ZIMMERMAN	HO	124	77
AUSTIN ZIMMERMAN	HO	124	103
FURNACE HILL HOLSTEINS	HO	127	460
LEVI L. ZOOK	HO	128	64
WILLARD & RACHEL HORNING	HO	130	186
JAVIN OBERHOLTZER	HO	131	113
DEEP RUN CRK HOLSTEINS	HO	132	200
IRON VALLEY FARM	HO	132	121
SHALLOW CREEK HOLSTEINS	HO	139	107
CURVIN LAUVER	HO	147	98
STONE-HAUS HOLSTEINS	HO	182	91
JAMES HUBER	HO	185	64
BRIAN L. MARTIN	HO	198	60

### Lycoming County

COGAN SKY FARM	223 HO	25424	1049	818
ADAM & LISA SONNEN	67 HO	22911	954	739
MATT & ALICIA DERR	168 JE	19684	984	736

#### HERDS WITH A RHA SCC LESS THAN 200,000

ADAM & LISA SONNEN	HO	99	67
COGAN SKY FARM	HO	128	223

### Mifflin County

DAVE & JEN STUCK	121 HO	26923	1100	852
SHAWN SMOKER	141 HO	25017	1066	828
TIMOTHY KAUFFMAN	128 HO	24970	1022	783
BILL & SUE SELLERS	39 XX	17483	755	587

#### HERDS WITH A RHA SCC LESS THAN 200,000

TIMOTHY KAUFFMAN	HO	128	128
BILL & SUE SELLERS	XX	164	39
SHAWN SMOKER	HO	194	141

### Montgomery County

JONATHAN & KAREN S.	63 HO	26576	1002	845
LALISA HOLSTEINS	153 HO	21173	1003	679

#### HERDS WITH A RHA SCC LESS THAN 200,000

W. B. SAUL HIGH SCHOOL	XX	193	15
------------------------	----	-----	----

### Northampton County

KEYSTONE FARM	63 HO	26119	977	834
---------------	-------	-------	-----	-----

#### HERDS WITH A RHA SCC LESS THAN 200,000

KEYSTONE FARM	HO	148	63
---------------	----	-----	----

### Perry County

TROUT BROS. DAIRY	786 HO	29590	1204	982
GERALD L. MARTIN	64 HO	29528	1167	938
JASON WISE	79 HO	29704	1202	908
BRUVALLEY FARM	326 HO	29231	1224	899
GARY HORST	112 HO	28741	1144	897
MERLIN & KRISTA MARTIN	67 HO	27392	1090	895
CARL R. HORST	92 HO	28598	1103	891
DARYL MARTIN	112 XX	25571	1045	823
CINDY & JOE COMP	96 HO	25809	1049	815
DWAYNE MARTIN	95 HO	24936	1024	776
JAY MARTIN	158 HO	23920	970	745
JOEL HURST	62 JE	16338	819	622

#### HERDS WITH A RHA SCC LESS THAN 200,000

DWAYNE MARTIN	HO	91	95
BRUVALLEY FARM	HO	101	326
GARY HORST	HO	112	112
GERALD L. MARTIN	HO	114	64
CARL R. HORST	HO	116	92

DARYL MARTIN	XX	125	112
CINDY & JOE COMP	HO	131	96
JASON WISE	HO	168	79
MERLIN & KRISTA MARTIN	HO	199	67

### Schuylkill County

JAY IVAN NEWSWANGER	94 HO	30059	1198	938
BENJAMIN BURKHOLDER	63 HO	27381	1117	931
JOSHUA KRILL	74 HO	26343	1086	851
RICHARD A. FRYER	50 HO	24421	983	798

#### HERDS WITH A RHA SCC LESS THAN 200,000

RICHARD A. FRYER	HO	119	50
JAY IVAN NEWSWANGER	HO	158	94
BENJAMIN BURKHOLDER	HO	167	63

### Snyder County

ROCKHILL DAIRY	322 HO	26079	1019	835
TIM & LAURIE HACKENBERG	45 HO	24604	1016	788
JOHN DAVID MARTIN	43 HO	20542	852	666
JORDAN ABBY EWING	61 HO	20515	765	649
JOSEPH BEIDLER	99 XX	14179	696	526

#### HERDS WITH A RHA SCC LESS THAN 200,000

JORDAN ABBY EWING	HO	151	61
TIM & LAURIE HACKENBERG	HO	179	45
ROCKHILL DAIRY	HO	189	322

### Somerset County

HILLCREST SAYLOR DAIRY	767 HO	27925	1114	860
LATUCH BROTHERS	258 HO	24806	1165	812
BERVALLON FARM	207 HO	24272	979	766
JASON BAUGHMAN	49 XX	21688	985	766
DOVAN FARMS	730 HO	24318	963	754
ERNAJEAN HOLSTEINS	61 HO	22233	922	750
JOHN BRENNEMAN	33 JE	16832	846	610
PHILIP PETERSHEIM	42 JE	16574	858	604
JOSEPH & RACHEL ZOOK	26 XX	16190	744	570
ABNER & JOANNA ZOOK	52 HO	17000	677	533

#### HERDS WITH A RHA SCC LESS THAN 200,000

JOSEPH & RACHEL ZOOK	XX	149	26
BERVALLON FARM	HO	166	207
ERNAJEAN HOLSTEINS	HO	170	61
TERRY LANDIS	HO	176	32
JASON BAUGHMAN	XX	176	49

### Susquehanna County

JO-SAN FARMS, INC.	54 HO	23448	881	744
ROBERT REYAN	91 HO	20579	863	675

#### HERDS WITH A RHA SCC LESS THAN 200,000

BOB KLIM	XX	113	10
JO-SAN FARMS, INC.	HO	119	54
BOB KLIM	HO	187	47
ROBERT REYAN	HO	194	91

### Tioga County

KREGER FARMS	76 HO	27849	1065	879
NICK MUSSHAFFEN	30 HO	25367	1015	841
DAN & JESSICA SLAYMAKER	173 HO	24824	976	797
DAVE METZLER	130 HO	24696	1050	783
WALTER & JUDITH HACK	109 HO	24353	983	757
CHATHAM VALLEY HOL.	91 HO	23863	977	743
ROGER ALEXANDER	74 JE	19938	993	725
GOODVIEWHILL FARM	99 HO	22489	887	709
MATT & TAYLOR SAMPSON	60 HO	21654	855	685
K & K HOLSTEINS	100 HO	23464	789	674
SHORT HILL FARMS	68 HO	19912	837	639
TIMOTHY P. WOOD	88 HO	20339	834	628
HULTZ HAVEN FARM, INC.	104 HO	20537	774	627
JOHN & BONNIE KENDRI	42 HO	18849	732	583
LUKE SHUEY	60 HO	17168	718	567

#### HERDS WITH A RHA SCC LESS THAN 200,000

GARY BAITY	HO	82	56
BRIAN & YVONNE ZERBY	JE	96	41
KREGER FARMS	HO	108	76
DAVE METZLER	HO	127	130
NICK MUSSHAFFEN	HO	138	30
CHATHAMVALLEY HOL.	HO	163	91
DAN & JESSICA SLAYMAKER	HO	166	173
K & K HOLSTEINS	HO	168	100
GOODVIEWHILL FARM	HO	173	99
SHORT HILL FARMS	HO	193	68

### Union County

## Fluid milk sales post 1% increase in October vs. year ago

Dairy demand headlines this week showed that fourth quarter 2023 posted some wins, starting with the 1% gain in the total volume of conventional and organic fluid milk sales for the month of October, compared with the same month in the prior year. This is the first year-over-year increase in total fluid milk sales volume for a single month since the Covid-19 pandemic year of 2020, when Americans purchased more milk as they cooked and ate meals at home.

Total conventional and organic whole milk sales (up 1.4% over year ago) led the total category increase for October 2023, but the gain in packaged fluid milk sales for the 10th month of 2023 did not push year-to-date totals above year-earlier levels; however, year-to-date losses were moderated to be 1.5% below year ago for the first 10 months of the year after running 2% below year ago for the first 8 months of 2023.

Stay tuned as the data on packaged fluid milk sales are reported in the coming weeks for Nov. and Dec. to round out the annual comparison.

Another positive headline this week cited global cheese consumption up more than 1% in the past year to a record high -- up nearly 6% from pre-Covid 2019.

These are harbingers of good things to come for dairy, but still, we saw the U.S. spot cheese price plummet on the CME cash market this week after last week's gains were erased, and we saw both cheese futures and Class III milk futures take hits to lose more than what was gained last week. All dairy product futures were lower, even though butter and nonfat dry milk spot cash trades were higher.

Meanwhile, the Global Dairy Trade biweekly internet auction Tues., Jan. 16 posted a substantial 2.3% increase in the all product index, which reached its highest level in nearly 12 months.

Leading the higher index posted Tuesday was a 5.8% increase in the GDT butter price and 4.3% increase in milkfat powder.

But all products posted increases, including whole milk powder up 1.7% compared with two weeks ago, lactose up 1.3%, skim milk powder up 1.2%, and bulk industrial cheese up 1%.



# Milk Market Moos

by Sherry Bunting  
agrite2011@gmail.com



Weekly reports by Dairy Market News indicate the winter storms and plant down-time are affecting milk relay in the Northeast and Midwest. Foodservice demand for cheese and butter is also affected in part by weather but also potentially other factors. At the same time, Class I orders are reportedly higher than what has been seen normally in recent years, including in the Central U.S. Meanwhile, the western U.S. is reporting increased international interest for U.S. cheese.

Dry whey prices had been increasing but weakened a bit this week; however, DMN reports the whey protein concentrate market is firming up and may pull production away from dry whey to WPC, which could support the dry whey spot price and the its contribution to the Class III milk price.

## Milk futures fall, esp. Class III Divergence widens, Cl. I formula losses to persist all year

Milk futures declined again this week, with the near-term Class III contracts for February and March continuing the week-to-week whiplash vascillating up one week, down the next -- in 50-cent increments. Class IV milk contracts were modestly lower, with some higher months on the board for the second half of 2024.

On the close Wed., Jan. 17, Class III futures for the next 12 months (Jan-Dec 2024) averaged \$17.43, down 18 cents from the previous Wednesday, doubling the level of last week's gain in the loss column this week.

Class IV contracts for the next 12 months averaged \$19.64/cwt Wednesday, down 4 cents from the previous Wednesday.

At the levels where milk futures are at this point, the Class IV over III divergence continues to widen, averaging a \$2.21 spread for the next 12 months with the January through April Class III contracts remaining a fully \$2.50 to \$4.25 lower than Class IV with the balance of

the year at around a \$1.60 spread -- well below the \$1.48 per cwt. 'magic number'. This means the futures markets are currently indicating Class I fluid milk value losses in farm-level mailbox prices will continue through 2024 under the Class I 'averaging' formula vs. the previous 'higher of' formula --

with no end in sight.

## Spot dairy products mixed: Cl. III products lower, Cl. IV higher

The CME spot cash dairy product markets were lower on Class III products, higher for Class IV products even though all dairy product futures were lower on the week, pushing milk futures lower as well.

The bright spot in the spot cash markets were butter and nonfat dry milk. Spot butter at \$2.58/lb gained that penny-plus for the week on the Wednesday session with a single load trading. Grade A nonfat dry milk also gained a fraction of a penny on the week, pegged at \$1.1950/lb with zero loads changing hands.

On the Class III side of the ledger, spot cheese prices plummeted with 40-lb blocks losing 6 cents on the week, pegged at \$1.50/lb Wed., Jan. 17 with a single load trading. Meanwhile, 500-lb barrels lost 2 cents, pegged at \$1.46/lb with zero loads trading. Dry whey, pegged at 40 1/2 cents/lb lost 2 pennies on the week with a penny of that loss coming Wednesday when 6 loads changed hands.

## Dec. FMMO blend prices off \$1

Federal Milk Marketing Order blend prices for December were mostly \$1.00 lower than in November. The Dec. 2023 uniform prices and PPDs were announced in mid-January as follows, with +/- change from month ago also noted:

FMMO	UNIFORM PRICE	CHANGE	PPD	CHANGE
Florida (6)	\$23.62	-0.46	N/A	N/A
Southeast (7)	\$22.01	-0.93	N/A	N/A
Appalachian (5)	\$21.39	-0.80	N/A	N/A
Northeast (1)	\$19.71	-1.03	+3.67	+0.08
Arizona (131)	\$19.10	-1.12	N/A	N/A
Southwest (126)	\$18.37	-0.97	+2.33	+0.14
Mideast (33)	\$18.20	-1.07	+2.16	-0.04
Pac. NW (124)	\$17.94	-1.03	+1.90	+0.08
Central (32)	\$17.79	-0.95	+1.75	+0.16
California (51)	\$17.55	-1.02	+1.51	+0.09
Upper MW (30)	\$16.40	-1.08	+0.36	+0.03

## YOU'RE INVITED FORAGE SUMMIT MEETING

ROB-SEE-CO



If silage is important to you or your customers, join us at a Rob-See-Co Forage Summit. There are several Forage Summit dates and locations to choose from. **These summits are open to customers and prospective customers, so spread the word to anyone interested.**

These meetings will be packed with great information, including:

- A deep dive on corn forage products and plot data
- Placing the right silage products in the right fields
- Streamline Ag products that help crops reach their full potential
- Other important forage products -- alfalfa, forage sorghum, and inoculant

Below is the detailed list of the meetings. The Forage Summit meetings will be 9:30 a.m. to 2:00 p.m. local time (regardless of time zone).

To register, contact Scott Harris 618-697-7864 or Amy Hoy at 724-263-4778.

Please register at least 1 week in advance of the meeting.

ROB-SEE-CO  
REAL SILAGE | DAIRY

MASTERS CHOICE  
SEEDCORN.COM

CITY	STATE	DATE	MEETING LOCATION
Wooster	OH	Tuesday, January 30, 2024	Hilton Garden Inn – 959 Dover Rd, Wooster, OH 44691
New Holland	PA	Wednesday, January 31, 2024	The Silk Mill – 328 E Main St, New Holland, PA
Green Castle	PA	Thursday, February 1, 2024	Mrs Gibbles – 7325 Molly Pitcher Hwy, Greencastle, PA 17225
Penn Yann	NY	Friday, February 2, 2024	Benton Fire Hall – 932 State Route 14-A, Penn Yan, NY 14527

**(JBS)**

Souderton, PA

**SELL YOUR CATTLE!**

**PURCHASING  
CULL COWS**

**Same-Day Payment  
NO Fees • NO Commission**

For more information:  
Direct: (970) 506-8215  
Duff George: (717) 594-8630



Livestock Buying Stations are OPEN:

7195 Molly Pitcher Hwy  
Greencastle, PA 17225  
Monday & Wednesday  
9 a.m. - 2:30 p.m.

503 School Rd  
Denver, PA 17517  
Tuesday & Thursday  
9 a.m. - 2:30 p.m.

Contact Doug Musser: (267) 371-9824

**(JBS)** Learn more about our brands at  
jbsfoodsgroup.com

249 Allentown Rd | Souderton, Pennsylvania 18964 USA

## HAUSA recognizes 'MW' as an undesirable genetic trait

BRATTLEBORO, Vt. — Holstein Association USA will declare Early Onset Muscle Weakness Syndrome (MW) as an officially recognized genetic condition beginning in February 2024. Holstein Association USA's Genetic Advancement Committee recently endorsed a recommendation from staff to do so. The recommendation comes after their analysis of the MW haplotypes following the December 2023 genetic evaluations. Comments from Holstein breeders and scientific researchers further support this decision.

"Soon, we'll have MW in the rearview mirror as we move ahead with our genetic advancement of the Holstein breed," observed Dr. Tom Lawlor, Holstein Association USA's executive director of research and development.

Starting next month, direct gene test results for MW will be labeled on Official Holstein Pedigrees, and other products where officially recognized genetic conditions are displayed.

The following are codes to designate animals with official gene test results on file:

- TE = tested free of MW
- MW = Heterozygous Carrier
- MW2 = Homozygous Carrier

Breeders can forward lab reports for MW test results to: labresults@holstein.com to have them added to the Holstein Association USA genetic conditions database.

MW haplotype results were made available for all genotyped animals in conjunction with the official genetic evaluation release on December 5, 2023. This information can be found in the same place as other haplotype information, including the free Family Tree Search, within Red Book Plus Online, on genomic reports, and within Enlight.

Results for MW haplotypes are reported as 0 (free), 1 (carrier), 2 (homozygous affected), 3 (suspected carrier), or 4 (suspected homozygous) on evaluations.

The best tool available for discovering and understanding new genetic conditions is farmer reporting. Farmers who have calves born with abnormal features or health issues that are suspected to be caused by genetic problems are asked to complete the Abnormality Report Form available at [www.holsteinusa.com/pdf/forms\\_apps/abnormality\\_report.pdf](http://www.holsteinusa.com/pdf/forms_apps/abnormality_report.pdf) and email it to LabResults@holstein.com, or contact the Genetic Services department at 800-952-5200.

Thank you for reading  
**FARMSHINE**

### WHITE WASHING with ADVANTAGE FARM WHITE

- Dries White • No Wet Floor
- Is Compatible With Disinfectant And Fly Sprays
- Does Not Rub Off Easily
- Washes Off Windows And Pipelines Easily



### BARN CLEANING SERVICE AVAILABLE WITH COMPRESSED AIR

To have your barn cleaned with air it will clean off dust, cobwebs and lots of the old lime. This will keep your barn looking cleaner and whiter longer.

CALL US ABOUT ON THE FARM FLY CONTROL

Serving Southeastern Pa. And More

## Beitzel Spraying

Witmer, PA 17585 • 7:00 A.M. to 5:00 P.M.  
717-392-7227 or Toll Free 1-800-727-7228

CERTIFIED COMMERCIAL APPLICATORS  
LICENSED 45 YEARS EXPERIENCE INSURED

*Radio Dispatched Trucks*  
Barn Spraying Is Our Business  
Not A Sideline  
Spraying Since 1961

Join us at our

# DAIRY SEMINAR

## R&J DAIRY CONSULTING

### WEDNESDAY, JANUARY 31<sup>ST</sup>

8:45 a.m. to 2:30 p.m.

### AT SHADY MAPLE RESTAURANT

**TO RSVP CALL: 717-203-6777**

**FEATURED SPEAKERS:**

**David M. Kohl, Ph.D.**  
Professor Emeritus, Virginia Tech  
"Agricultural Update and the Road Ahead"  
"Increasing Your Odds for Business Success"

**Paul M. Fricke, Ph.D.**  
Professor of Dairy Science, University of Wisconsin-Madison  
"Building a Foundational Repro Program"

Keystone Concrete Products, Inc.  
477 E. Farmersville Rd.  
New Holland, Pa. 17557



(717) 355-2361 - corporate office  
(717) 355-9548 - fax  
[keystoneconcreteproducts.com](http://keystoneconcreteproducts.com)

**NEED THAT BUNKER? CALL ASAP TO RESERVE YOUR WALLS!!!**



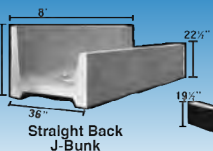
Secure Cover Dealer

Financing Available

Agricultural Pre-cast Products Available:



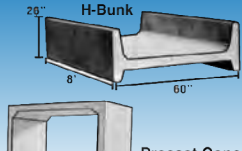
T & L Shaped Precast walls  
8'6", 12'6" & 16' high



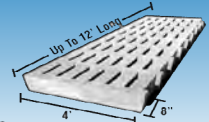
Straight Back J-Bunk



Slant Back J-Bunk



Precast Concrete Box Culverts



Cattle "Waffle Slat"  
Moisture cured, 8000 psi concrete  
New 8" thick for Heavier Equipment



Cattle Guards Avail. 12' & 16' Lengths

# Maryland Holstein Juniors reminded of project deadlines

FREDERICK, Md. — Maryland Holstein Juniors are reminded that it's time to get their DJM and YDJM books completed. All Juniors are encouraged to record their project accomplishments for the year by completing a record book. The state association gives Juniors a monetary prize for completing books. The top books win the opportunity to compete at the national level.

Books are due to Gary Brauning on or before Saturday January 27. E-mail: braunsidefarms@verizon.net. Phone (443) 375-6963.

Be sure to follow the rules for the division you are competing in.

♦ Junior division: (ages 8 - 12): [www.holsteinusa.com/pdf/forms\\_apps/YDJM\\_2024.pdf](http://www.holsteinusa.com/pdf/forms_apps/YDJM_2024.pdf) Follow the guidelines on the

2024 YDJM Application. You do not need to complete any of the personal view questions.

♦ Intermediate division: (ages 13 - 16): [www.holsteinusa.com/pdf/forms\\_apps/YDJM\\_2024.pdf](http://www.holsteinusa.com/pdf/forms_apps/YDJM_2024.pdf) Follow the guidelines on the 2024 YDJM Application. You will only need to do two of the four personal view questions. Up to two YDJM books may be submitted to the national contest based on the discretion of the judging committee.

♦ Senior division: (ages 17-21): [www.holsteinusa.com/pdf/forms\\_apps/DJM\\_2024.pdf](http://www.holsteinusa.com/pdf/forms_apps/DJM_2024.pdf) Follow the guidelines on the 2023 DJM Application. You only need to answer the two written personal view questions. You do not need to answer the two video questions.

Up to two DJM books may be submitted to the national contest based on the discretion of the judging committee. The two best books will be sent whether they are new ones or resubmitted books.



## Beef x Dairy Done Better.

The industry's first full-circle beef x dairy program.

**FeedWise™** **ONYX™**

**YOUR Complete Solution**  
Create high-quality beef x dairy cattle that have a guaranteed buyer of the calf at fair market value.

Scan to learn more!

[www.genex.coop/FeedWise](http://www.genex.coop/FeedWise)

**GENEX™**  
FOR GENERATIONS

## Solutions from page 1

have to make sure our food producers can keep producing food.”

On the issue of cell-cultured proteins and other labeling issues with fake meat and dairy products, State Representative Dave Zimmerman asked G.T. what Congress can do to keep these bio-engineered products from being labeled as meat (or dairy).

The Ag Committee is looking into this, but labeling falls mainly under the jurisdiction of the Committee on Energy and Commerce, he said.

“These are not ag products,” G.T. declared, “and so they need to come through something other than the Farm Bill, something like the milk labeling bill.”

The milk labeling bill (Dairy Pride Act, S. 549) has 15 sponsors in the U.S. Senate, and has been referred to the Senate Committee on Health, Labor and Education. On the House side, the bill (H.R. 1462) is authored by Congressman John Joyce, a doctor representing Pennsylvania’s 13th district. It has 34 sponsors and is referred to the House Committee on Energy and Commerce in the Health Subcommittee.

When asked what Congress can do to make sure government and industry get the math right on methane emissions from livestock to account for the carbon cycle and the benefits of livestock as a solution, not a problem – G.T. was quick to point out there is too much political science on this issue, and not enough real science. He expressed interest in the Dublin Declaration signed by over 1200 scientists to-date. It states 10 scientific principles that the global discussion continues to ignore when it comes to methane and livestock.

On the Whole Milk for Healthy Kids Act, several attendees thanked G.T. for his leadership in championing this bill, which is now in the hands of the U.S. Senate, having passed the House 330-99 on Dec. 13, 2023.

After the hearing, Secretary Redding confirmed that he supports Senate passage of S. 1957, and that he views it from a nutritional standpoint.

“We set out to do all of these things to try to improve childhood nutrition, and here we have something that’s already in place, where nutrition can be more efficiently delivered every day at school by expanding the milk choices,” said Redding.

G.T. is encouraged by the bill’s chances in the Senate, but admits that it’s going to take work and advocacy to get the Senate more fully on board.

Now is the time to be contacting the two U.S. Senators that represent each of the states we all live in! The past two editions of *Farmshine* (Jan. 5 and 12, 2024) had articles with information for letter-writing and phone calls. Check them out!

### Is your water safe to drink?

Even water that "looks" good can be harmful to your health and your livestock

**New technology water treatment**

- Save up to 50% in operating costs
- Less salt
- Less water for back wash

**HOME FARM**

**COMMERCIAL**

Iron Removal . . . Softener . . .

Nitrate Units . . . Water Neutralizer . . .

UV Lights . . . Reverse Osmosis . . .

Chlorine . . . Peroxide Applicators . . .

Available in 110 or 12V DC

**OREGON** Water Conditioning LLC 305 Quarry Road  
Leola, PA 17540  
(717) 656-8380

# More protein, better policy ... welcome to 2024

By **GREGG DOUD, President and CEO**  
National Milk Producers Federation

ARLINGTON, Va. — Happy New Year, and what a year 2024 promises to be. Within dairy and throughout agriculture, the refrain that will be often repeated is that this will be the year of protein. In fact, it may be the first of many: If you look out over the next decade, the supply of animal protein in the world — that's beef, pork, poultry, and dairy — comes nowhere near meeting the demand.

That means U.S. dairy's emphasis on exports and our international competitiveness will certainly be an area of focus. Dairy farmers and their cooperatives are extremely well positioned to do this: We're efficient, we can get high-quality products overseas competitively, and our processing capacity is expanding. Our innovation and technology in the dairy industry to expand international markets is second to none. NMPF can support these efforts by continuing our excellent partnership with the U.S. Dairy Export Council and by seeking sound policy that promotes the powerhouse potential of U.S. dairy.

Our Cooperatives Working Together Program will soon be in a position to bring significantly greater resources to bear in supporting market growth for U.S. dairy worldwide — just as our main competitors in New Zealand and Europe take a step back in large part due to regulatory constraints we in the United States have been able to avoid.

We also have room to grow our industry by increasing protein demand at home. A focus on the next generation is critical to achieving this. Last month, the House of Representatives took an important step toward boosting the next generation of milk drinkers by passing the Whole Milk for Healthy Kids Act, which would get whole and 2% milk back on school lunch menus. The vote was 330-99, which gives us high hopes in the Senate this year. Meanwhile, we know that the science behind the health benefits of dairy in all its compositions is only becoming more compelling — and that puts us in a great position as the Dietary Guidelines for Americans Committee meets to craft new nutrition standards that guide federal programs.

More demand for dairy protein and better health, in America and worldwide. If that's not enough to get an industry excited for the future, I don't know what could be.

Another critical topic for this year is risk management. USDA's Federal Milk Marketing Order hearing has been painfully slow, but it's incredibly important for U.S. dairy producers. Our NMPF game plan and team effort has been outstanding thus far, and we will follow the hearing to its conclusion. We will be prepared to respond as needed to whatever USDA proposes and ensure that the path forward is what's best for dairy.

A new Farm Bill is also on tap. We're comfortable this time around with the fundamental structure of the dairy safety net, but there are always improvements to be made, and we'll be seeking opportunities for positive change whenever they become available.

Of course, federal policy includes much more than just the Farm Bill. We're excited to see the evolution of greenhouse gas regulation and carbon markets in ways that benefit dairy farmers. We are pushing for faster approvals for feed additives that reduce methane emissions and put us on a path toward consistently improving our environmental footprint. We're excited to see billions of dollars of investment capital and new technology and innovation flow toward dairy, because it's not just farmers who believe in this industry's future — it's some of the world's brightest minds and savviest investors.

These are just some of the most immediate opportunities we can meet. Looking only slightly beyond 2024, we will again need to address tax policy and how we can stimulate investment and growth in all of agriculture and rural America. In addition to that are the ongoing, long-term fights where progress is slow, but real. Dairy is chipping away at the market share of plant-based imposter-dairy beverages and making headway with FDA in restricting the use of dairy terms. Our FARM program remains a world-leading customer assurance program that's pro-



Gregg Doud

tecting this industry from the wildly inaccurate claims of our detractors and competitors.

As NMPF's new president and CEO, I am duty-bound to defend this industry. And because of our farmer and co-op leadership and first-class staff, we defend it well. But 2024 is also exciting because of the great potential we in dairy have to take the initiative. We can attack as well as defend. 2024 is going to be a great year for this industry. Thank you for giving me the opportunity to share in the leadership of this journey.

## Concrete Grooving

Do your cows a favor...

...Keep Them on Their Feet!



**Groove...**

- Alleys - **down to 20" wide**
- Feedlots
- Holding areas
- Return lanes
- Palpation lanes
- **Anywhere you have slick concrete!**

**Your results...**

- Better Heat Detection
- Fewer injuries
- Increased milk production

**Eli Fisher Construction**  
814-364-9361 • Centre Hall, PA

### THE BEST SYSTEM IN THE WORLD JUST GOT BETTER!



**Free Stalls & Tie Stalls**

**Poly Pillow™**

NEW & Improved

NEW Waterproof Top Cover

NEW Premium Pad High Density Foam For Additional Cow Comfort.

NEW & Improved Mattress Technology

**Pasture Mat®**

the original multi-celled mattress system used by over 1,800,000 cows World Wide.

**Maintains Softness      Excellent Traction**

**Out Lasted EVERY other System Available**

**INCREASE COW COMFORT**

**REDUCE INJURIES**

**Petersheim's Cow Mattresses**

**"Cow Comfort is Our Specialty"**

**CALL 717-786-2918**

[www.realcowcomfort.com](http://www.realcowcomfort.com)

US Pat.#Des.421.321 US 2087464 653195 Europe 0684760 069423746.9



**Pack Mat™ Stops Cows From Digging**

The Only proven system in the World to Reduce Sand Usage up to 80% while increasing cow comfort. Easier for manure handling and less wear and tear on equipment.

**1 Inch of sand on Pack Mat= 6 Inches Deep Sand**

**Maintains Consistent Stall Dimensions**

**REDUCE Stall clean out time**

**Handle Manure NOT Sand**

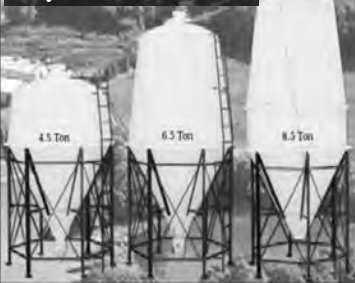


Traditional Deep Bedded Sand Stalls

**Pack Mat™**

Maintains consistent stall dimensions

**PolyDome Bulk Bins**



PolyDome Bulk Bins are the perfect choice for handling high moisture corn, soybeans, and other granular materials. They are made of high density polyethylene which will never rust or corrode. PolyDome Bulk Bins will always remain clean and attractive. 0.9 ton to 8.5 ton capacity



**Ulti-Mat All Rubber Cow Mattress Installation**

Continuous Cow-Comfort — THE ONLY All Rubber Mattress that recovers to original shape after cow movement.

**Superior Continuous Roll Rubber Flooring Available!**

Up to 14.5' wide & 150' long. All NEW Virgin Rubber

**We are now making repairs to any kind of mattresses!**

**Zartman Farms Cow Comfort Systems, Inc.**

820 Hilltop Rd., Ephrata, PA 17522 • 717-733-1050

Northeast U.S. Distributor of Poly Dome Equipment • Wholesale & Retail  
[zartmanfarms@dejazzd.com](mailto:zartmanfarms@dejazzd.com) • [www.zartmanfarms.com](http://www.zartmanfarms.com)



## King's AgriSeeds schedules regional meetings

LANCASTER, Pa. — King's Agriseeds has scheduled four winter meetings, as listed below, featuring "The Total Package: Forage. Soil. Nutrition."

Billed as informational meetings on all key components of forages, the same program will be presented at each of the locations.

• **Lewisburg, Pennsylvania**, The Rail Center, 224 Young Road, on January 30th, start-

ing at 9 a.m.

• **New Holland, Pennsylvania**, Garden Spot Fire Company Station 1, at 339 E. Main Street, on January 31st from 9 a.m.-1:30 p.m.

• **Dayton, Virginia**, Woodsmen of the World, 3045 John Wayland, on February 1 from 9 a.m. to 1:30 p.m.

• **Middletown, Maryland**, Middletown Fire Department, 1 Fireman's Lane, on February 2 starting at 9 a.m.



# MUELLER

## DAIRY FARM EQUIPMENT

**The Digital E-Star<sup>®</sup> ... has everyone's attention!**

- Automatic Capacity Control
- Electronic Valve Control
- No Adjustments Needed
- HiPerForm<sup>®</sup> Technology

Like us on Facebook! [www.Facebook.com/MuellerMilk](http://www.Facebook.com/MuellerMilk)

**Fisher & Thompson, Inc.**

Leola • 717-656-3307      Roaring Spring • 814-224-0070  
 Belleville • 717-935-7422      Somerset • 814-444-8502  
 Troy • 570-297-2012      Bethel • 717-656-3307

**Priest's Refrigeration**

Greencastle  
 717-643-1057

**Rufus Brubaker Refrigeration**

Manheim  
 866-665-3525

**Regional Manager**

PA, NY, MD, DE, NJ  
 Quarryville, PA      417-872-5715

Vic Leininger

©2015 Paul Mueller Company 454

## Brown Swiss consignments are invited from near and far

FREDERICK, Md. — The Mid-Atlantic Brown Swiss Calf Sale turns 50 this year and is dedicated to the memory of Ronnie Heffner, a dear friend and driving force behind these years of successful sales.

The 50th anniversary sale will be held on Saturday, April 20, at the Frederick Fairgrounds, starting at 10:30 a.m.

Considered one of the most successful spring sales in the Brown Swiss arena, it is noted for consistently offering outstanding calves. Many have developed into national show quality animals, state and national Bellringers, All-Americans, and profitable additions to herds. Many success stories have come out of this sale with Junior-purchased animals. Quality of pedigrees and top consignments have been the tradition for 50 years.

Brown Swiss breeders from across the region are invited to be a part of this fast approaching historic sale. Now is your chance to consign a heifer. Check those calf pens and pedigrees and see what you can offer.

The sale committee is accepting spring yearling age to anticipated spring heifer calves for consignments - so think March 2023 through March 2024. The committee is looking for a strong group of animals that combine the unique blend of production and type that anyone, from junior buyers of 4-H



project animals, to the investment buyer, is looking for. This is a multi-level sale that offers something for everyone.

You are invited to be a part of this sale with a consignment or two. If you are interested in consigning, or want additional information about the sale, please contact one of the following:

• Cindy Warner - cell: 301-639-6887; email: bscow@comcast.net

Mailing address: 7417 Round Hill Road, Frederick, Md. 21702

• Jeff Hubbard - 301-401-5000; email: hubbard100865@gmail.com

• Jenna Lenhart - 814-931-3726; email: smithjenna12@gmail.com

• Emmy Heffner - 240-344-6399; email: eheffner@lswg.cpa



## Morrissey Insurance

# Congratulates Laurel Barley

## For Her Success At The 2023 Lampeter Community Fair!



Laurel won Reserve Grand Champion Market Beef and Steer Showmanship winner!

*Congratulations to all exhibitors and winners of the 2023 Lampeter Community Fair!*



890 N. Reading Rd.  
 Ephrata, PA 17522  
[www.insuringyourfuture.com](http://www.insuringyourfuture.com)  
**800-422-8335**

# Dairymen Edward Coble and Doyle Weltzbarker honored

WATKINSVILLE, Ga. — Edward Coble and Doyle Weltzbarker, Georgia dairy farmers and active leaders in the Georgia dairy industry, have been named the 2024 Bobby Walker Award recipients by Georgia Milk Producers, Inc.

The Bobby Walker Award (formerly named “The Friend of the Dairy Industry Award”) recognizes individuals who have advanced the dairy industry in Georgia and is the highest honor awarded by the Watkinsville-based trade association for Georgia dairy farmers. Coble and Weltzbarker received the award at the Georgia Milk Producers, Inc. annual awards luncheon on Tuesday, January 17, during the Georgia Dairy Conference in Savannah, Georgia.

Both Edward Coble and Doyle Weltzbarker have spent the better part of 50 years in the dairy business while advocating for the interests of Georgia dairy farmers and the agriculture industry.

“Ed Coble and Doyle Weltzbarker are not only excellent dairy farmers, but they have been exceptional leaders in our industry and important advocates for Georgia dairy farmers for many years,” said Georgia Milk Producers, Inc. President Matt Johnson. “I am honored to say that I have known Ed and Doyle for many years, and I — like many farmers across our state — have learned a great deal about farming, agribusiness, and agricultural policy from them. They have both played a major role in advancing our industry, and we are immensely grateful for their contributions to the Georgia dairy industry.”

“Georgia Milk Producers created the Bobby Walker Award to honor the individuals who have had an outstanding impact on Georgia dairy farmers and their families. Both Edward Coble and Doyle Weltzbarker are exceptional examples of men who have been actively involved in advocating for our industry, supporting fellow dairy farmers, and leading by example in the management and operation of their own farms and businesses” said Bryce Trotter, executive director of Georgia Milk Producers, Inc.

• **Doyle Weltzbarker** earned a degree in animal science from the University of Georgia before entering the United States Air Force where he served as a navigator and ultimately attained the rank of captain. Upon leaving the service, Weltzbarker relocated to Quitman, Georgia where he purchased West End Milling Co. in 1961. He grew West End into a full-service feed mill and buying point serving farmers across southern Georgia and eventually sold the business in 2016.

In 1992, Weltzbarker entered the dairy business and founded Brooksco Farm. In 1998, he partnered with Calvin Moody to start Brooksco Dairy.

Weltzbarker served for 20 years as a member of the board of directors for the

Georgia Agribusiness Council and continues to serve as a director emeritus representing the needs of the dairy industry within one of Georgia’s largest agricultural advocacy organizations. He has also served on the Suwannee-Satilla Regional Water Council, having a role in developing water policy for south-central Georgia since 2007.

• **Edward Coble** began milking cows in 1956 while attending high school in Simpsonville, South Carolina. He sold his herd of 17 cows in order to enroll at Clemson University where he majored in dairy science. Upon

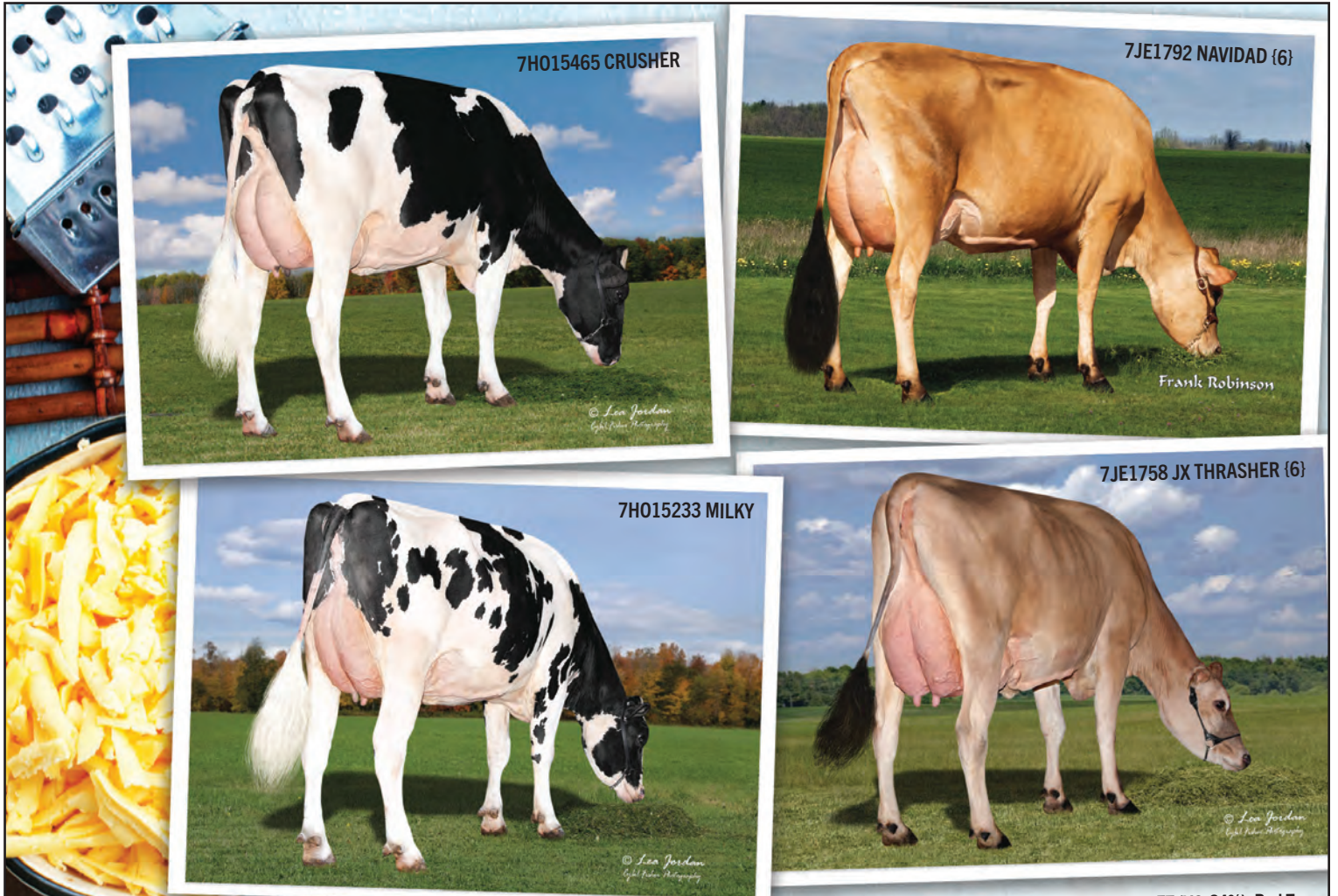
graduating from Clemson in 1964, Coble returned to Simpsonville and began renting a small dairy.

He married Lana Turner in 1968, and in 1973 the couple welcomed their first child and built their first facility together. Starting with a dream to one day milk 250 cows, they grew their farm while raising four children, each of whom are involved in the dairy industry as adults.

In 1998, the Cobles moved to Burke County, Georgia in search of new opportunities to grow as their sons James and Joel

joined as partners. They built Harmony Grove Dairy in 2005, and Coble continues to play a vital role in the day-to-day management 19 years later. Under his stewardship, the farm has grown to exceed their 250-cow dream as three generations of Cobles continue to operate Harmony Grove.

A strong voice for Georgia dairy farmers, Coble served on the Georgia Milk Producers Board of Directors for 15 years before retiring from the Board in 2022, and he still serves as an informal advisor to many younger dairy farmers who call him for advice.



Top-Bottom: Lars-Acres SSI C 26381-ET, Larson Acres, Inc., Evansville, WI; Glezen Milky 8926-Grade, Glezen Farms LLC, Lisle, NY.

Top-Bottom: Primus Navidad 56016 Felicity-ET (VG-84%), Red Top Jerseys, Hilmar, CA; JX Victory 55435 Thrasher 60692 {5} (VG-84%), Victory Farms LLC, Revillo, SD.

## MORE COMPONENTS ♦ MORE CHEESE ♦ MORE DOLLARS

Contact your Select Sires representative today to improve components and profitability!

PROVEN HOLSTEIN				PROVEN JERSEY			
	CFP	REL %	HHP\$*		CFP	REL %	HHP\$
7H014454 LIONEL	240	99	1,107	7JE1792 NAVIDAD {6}	178	99	394
7H014545 JAMARCO	209	98	928	7JE1758 JX THRASHER {6}	143	99	917
7H015245 PERPETUAL	207	92	1,170	7JE1789 JX CHATHAM {4}	130	98	880
7H015233 MILKY	205	91	1,137	7JE1879 JX RHODES {5}	120	92	739
7H014985 RUPERT	185	97	1,082	7JE1630 KESTREL-P	120	96	541
14H07770 HELIX	183	99	831	7JE1800 RENFROW	116	97	657
7H014229 TAHITI	178	99	1,061	14JE1876 JX COLGATE {6}	101	95	569
7H015465 CRUSHER	176	91	1,044	14JE1810 BULWURX-P	95	94	519
7H014992 LEMUEL	175	94	950	14JE769 JX STONEY {3}	88	99	724
7H014438 GODDARD	173	99	1,077	14JE1762 CASTRO	83	99	467



**YOUR SUCCESS** *Our Passion.*

Select Sires Member Cooperative  
Phone: (614) 878-5333

Premier Select Sires, Inc.  
Phone: (800) 227-6417

12/23 CDCB-S/HA/AJCA Genomic Evaluations. All Jersey sires are BBR 100. All sires are JH1F. All sires are JNS-TF, except RENFROW, JX RHODES {5} and BULWURX-P (JNSC). All sires qualify for semen export to Canada. \*Your Success Our Passion., HHP\$ and the Select Sires logo are registered trademarks of Select Sires Inc., Plain City, Ohio. 7 = Select Sires, 14 = Accelerated Genetics

# CDE DAIRY MARKETS & MANAGEMENT UPDATE

All prices — JAN. 17, 2024 — except where noted

**Fluid milk as a staple:** Have you ever had to go to a grocery store right before a snowstorm? Anytime there is more than an inch of snow forecasted, it seems like everyone and their brother rushes there to buy the essentials for their household — bread, eggs, milk, toilet paper — whatever they perceive they can't do without in the event of a major shutdown. I find this funny because rarely are roads shut down for more than a day — or even a couple of hours anymore — because of a snowstorm.

Even when we had three teenage boys at home, I never had to worry about how much milk was in the refrigerator because I knew I had a whole milk tank full right across the driveway. I am thankful, though, that so many people still see it as an essential they can't do without for even a day or two. IRI (International Resources Inc) data demonstrate how much of a staple milk is in U.S. households.

Based on data from 2019, fluid milk is still in 94% of the nation's households, with 52% of those households exclusively buying milk (33 gallons of milk per year). That means 42% of U.S. households buy both milk and plant-based alternatives (29 gallons of milk per household compared to only 5 gallons of plant-based beverages). Furthermore, only 3% of households buy plant-based beverages exclusively (9 gallons per household per year). The remaining households (3%) do not buy either milk or plant-based beverages.

Surprisingly, fluid milk's number one competitor is not plant-based beverages. It is water. Based on market research conducted and reported in 2017, if a consumer chose to drink something besides milk, 53% of the time they chose to drink bottled water instead. Coffee was a distant second with 11% saying they drank coffee instead of milk. Plant-based beverages, encompassing all types, came in fifth with consumers reaching for those only 6.6% of the time.

Unfortunately, although many households continue to see fluid milk as a staple, per capita consumption of fluid milk products has been on a downward track since 2000, falling more than 196 pounds to 130 pounds in the past 22 years. Total fluid milk sales have followed a similar trend, falling more than 12 million pounds since its peak in 2011 to just under 43.45 billion pounds in 2022. That's a drop of more than 20% in the past 12 years.

In October 2023, fluid milk sales bucked the trend, increasing 0.9% from a year ago to 3.7 billion pounds. The increase was driven by increased demand for reduced-fat flavored milks. Despite the bright spot in October, the fluid milk sales for the first 10 months of 2023 continued to be below year-ago levels, down 1.6% for the year with two months in sales left to report.

Bright spots, though, do appear in the fluid milk category, with whole milk sales and sales of flavored milks increasing in recent years.

Whole milk sales hit a low point in 2013 at 13,784 million pounds before rebounding to more than 15,812 million pounds by 2021. That is a 15% increase in the past eight years. Flavored milk sales also continue to stay strong, peaking at 4,633 million pounds in 2017 before falling slightly to 4,171 million pounds in 2021.

This recent trend toward whole and flavored milks could be explained by a 2018 consumer survey that shows millennials and those in the iGen and GenX age groups were more likely to purchase whole milk and flavored milks. According to the study, 41% of Millennials were more likely to purchase whole milk while only 26% of Baby Boomers were likely to purchase whole milk. Flavored milks were also more preferred by those in the iGen and Millennial age groups.

**JAYNE SEBRIGHT**  
Executive Director, CDE  
717.346.0849  
jsebright@centerfordairyexcellence.org



## Markets

### Morrison's Cove Auction

January 15, 2024

Grass	240-250
Mixed hay	135-245
Round bales	90-155
Large square bales	140-180

### Shippensburg Auction

January 16, 2024

Mixed hay	175-380
Timothy	200
Grass	185-255

### Wolgemuth Auction

January 15, 2024

Alfalfa	220-395
Mixed hay	60-395
Timothy	140-210
Grass	190-350
Straw	120-150
Orchard	210-445
Corn fodder	140-150

### Dewart Auction

Dewart, Pa.  
January 15, 2024

Cattle: 155	
Slaughter cattle:	
Steers:	
Choice	165-175
Slaughter cows:	
PrmWht 65-75% lean	98-112.50
Breakers 75-80% lean	88-94
Boners 80-85% lean	82-94
Lean 85-90% lean	71-85
Slaughter bulls	95-127
Feeder cattle:	
Steers:	
M/L-1-2	102-172
Holstein steers:	
L-3	70-125
Heifers:	
M/L-1-2	150-165
Bulls:	
M/L-1-2	95
Calves: 308	
Feeder calves:	
#1 Hol bulls	360-450
#2 Hol bulls	260-340
#3 Hol bulls	130-200
Utility bulls	15-40
Hol heifers	40-110

### Middleburg Auction

Middleburg, Pa.  
January 16, 2024

Cattle: 181	
Feeder cattle:	
Steers:	
M/L-1	165
M/L-2	137-160
L-3	128
Holstein steers:	
L-3	96
Heifers:	
M/L-1	147-152
M/L-2	135-175
Bulls:	
M/L-2	115-140
L-3	110
Holstein heifers:	
L-3	124

Slaughter cattle:

Steers:	
HiCho & Prm	171-183
Choice	158-170
Select	132-158
Holstein steers:	
HiCho & Prm	147-164
Choice	131-138
Select	129
Heifers:	
HiCho & Prm	174-180
Choice	146-167
Select	136-144

Slaughter cows:

PrmWht 65-75% lean	108-111
Breakers 75-80% lean	80-109
Boners 80-85% lean	92-111
Lean 85-90% lean	56-105
Bulls:	
2-3	128-153
Holstein heifers:	
Choice	130
Select	109-126
Calves: 71	
Feeder calves:	
#1 Hol bulls	285-465
#2 Hol bulls	335-445
#3 Hol bulls	295-435
Utility bulls	5-90
#1 Hol heifers	85-145
#2 Hol heifers	70-100

### Morrison's Cove

Martinsburg, Pa.  
January 15, 2024

Cattle: 68	
Steers:	
Choice	165-170
Good	160-164
Heifers:	
Choice	163-168
Good	158-163
Cows:	
Util/Commercial	90-98
Can/LoCut	88 & down
Calves: 93	
Choice	150-190
Good	125-140
Standard	10-40
Hol bulls	200-400
Hol heifers	20-80

### Hosking Sales

New Berlin, N.Y.  
January 15, 2024

Cattle:	
Dairy cows	.91
Bone utility	.90-1.13
Canners & cutters	.85-.95
Easy cows	.70 & down
Steers over 1200 lbs.	1.32-1.44
Organic bulls/steers	1.36
Bulls over 1100 lbs.	1.18-1.35
Feeders:	
Dairy	1.25
Bulls	1.33-1.50
Heifers	.75-1.60
Bull calves	top 4.80
Heifer calves	top 3.00

### Wyalusing Livestock

Wyalusing, Pa.  
January 15, 2024

Cattle:	
Canners	69-.75
Boners	.74-.81
White cows	.89-.99
Feeders:	
300-500 lbs.	.55-1.60
Calves:	
84 lbs.	2.25-3.10
92 lbs.	2.90-3.50

Prices change daily. This market information is an example for educational purposes. The market data below are compiled weekly by Farmshine, via CME & USDA reports.

### CME DAILY FUTURES & OPTIONS TRADING — JAN. 17, 2024 AT THE CLOSE

*AVG = Average basis for North-East and Mid-East	JAN-24	FEB-24	MAR-24	APR-24	MAY-24	JUN-24	JUL-24	AUG-24	SEP-24	OCT-24	NOV-24	DEC-24	TREND									
CLASS III MILK FUTURES (\$/CWT) vs. wk ago: Jan off \$0.05, Feb-Jun down \$0.25-0.50, Jul-Nov weak to mostly \$0.10 lower, Dec \$0.05 higher.	15.16	15.71	16.14	16.90	17.50	17.90	18.12	18.29	18.39	18.41	18.40	18.26	12-Month Avg. 17.43 ↓									
CLASS IV MILK FUTURES (\$/CWT) vs. wk ago: Jan-Jul \$0.05-0.25 lower, mostly down \$0.10, Aug-Dec firm to \$0.07 higher, except Nov down \$0.03.	19.28	19.04	19.08	19.34	19.58	19.68	19.77	19.94	20.10	20.06	20.00	19.86	12-Month Avg. 19.64 ↓									
CLASS III MILK (\$/CWT) OPTIONS — PUTS — Daily Strike Price / Premium	15.25	0.11	15.75	0.29	16.25	0.59	17.00	0.72	17.50	0.79	18.00	0.96	18.25	1.00	18.50	1.14	18.50	1.17	18.50	1.24	18.25	1.22
MILK BASIS (\$/CWT) — 2017-22 PA BASIS AND AVG PA/NY/VT/OH — YOUR INDIVIDUAL BASIS WILL VARY (MAILBOX - CLASS 3)	PA	1.17	0.62	1.53	2.29	1.82	1.58	0.99	1.03	0.95	0.79	0.60	0.79									
*AVG	0.85	1.67	2.55	2.15	1.66	1.45	1.25	1.31	1.15	0.69	0.74	1.38										
DMC OFFICIAL GROSS MARGINS per cwt (USDA All-Milk, com, alfalfa & Ill. soybean, feed for ALL CLASSES of dairy cattle on farm) Updated with NEW prem. alfalfa feed cost	DMC	SEP-22	OCT-22	NOV-22	DEC-22	JAN-23	FEB-23	MAR-23	APR-23	MAY-23	JUN-23	JUL-23	AUG-23	SEP-23	OCT-23	*NOV-23	TREND					
		8.62	10.71	10.89	9.76	7.94	6.19	6.08	5.84	4.83	3.65	3.52	6.46	8.44	9.44	*9.58	↑↑					

U.S. AVG PREMIUM ALFALFA & ALFALFA/GRASS HAY 20-22% CP - Source: USDA Monthly National Dairy Comprehensive Report

SEP-22	OCT-22	NOV-22	DEC-22	JAN-23	FEB-23	MAR-23	APR-23	MAY-23	JUN-23	JUL-23	AUG-23	SEP-23	OCT-23	NOV-23	*DEC-23
290.70	300.10	289.50	296.50	266.60	297.25	277.00	290.00	292.86	244.27	254.92	243.50	238.50	217.82	240.41	*231.7 ↓

U.S. AVG. BRED COWS & HEIFERS (3rd trimester) per head as reported by USDA Monthly National Dairy Comprehensive Report

1265	1310	1290	1300	1250	1352	1342	1330	1400	1559	1502	1540	1500	1741	2108	*N/A
------	------	------	------	------	------	------	------	------	------	------	------	------	------	------	------

U.S. AVG. FRESH COWS per head as reported by USDA Monthly National Dairy Comprehensive Report

1384	1701	1526	1531	1436	1487	1493	1544	1469	1792	1615	1634	1643	1830	1988	*N/A
------	------	------	------	------	------	------	------	------	------	------	------	------	------	------	------

CORN FUTURES (\$/BU)

MAR-24	MAY-24	JUL-24	SEP-24	DEC-24	MAR-25	MAY-25	JUL-25	SEP-25	DEC-25	MAR-26	MAY-26	TREND
4.420	4.536	4.624	4.676	4.750	4.860	4.916	4.930	4.830	4.832	4.920	4.962	↓
WEEK AGO												
4.594	4.714	4.812	4.850	4.920	5.030	5.082	5.090	4.952	4.942	5.022	5.056	

SOYMEAL FUTURES (\$/TON)

MAR-24	MAY-24	JUL-24	AUG-24	SEP-24	OCT-24	DEC-24	JAN-25	MAR-25	MAY-25	JUL-25	AUG-25	TREND
358.7	356.1	358.1	358.0	356.5	354.4	356.0	356.1	354.9	354.7	356.0	354.1	↓
WEEK AGO												
361.3	364.3	364.2	366.6	366.0	364.2	361.3	362.5	362.2	360.9	360.4	361.5	

*NEW	PA MILK MARGIN & IOFC - LATEST PSU VALUES - *AUG. 2023	CME DAIRY CASH-SETTLED FUTURES (\$/LB) 01/17/24											SPOT CASH	TREND
FEED = \$/CWT	FEED COST (\$/CWT milk)	IOFC (\$/COW @ 75 lbs milk)	PA MILK MARGIN (\$/CWT milk)	JAN24	FEB24	MAR24	APR24	MAY24	JUN24	JUL24	01/17/24			
IOFC = \$/COW	*AUG (estimated)	*8.84 ↓	*8.14 ↑	*14.78 ↑	NFDM	1.204	1.205	1.211	1.244	1.251	1.268	1.285	↓	1.1950 ↑
	PREV MO	9.16	6.18	13.05	WHEY	0.435	0.430	0.435	0.450	0.442	0.450	0.462	↓	0.4050 ↓
	YR AGO	9.38	12.61	21.95	BUTTER	2.620	2.570	2.551	2.568	2.585	2.600	2.610	↓	2.5800 ↑
	Covers ONLY lactating feed, based on 75 lb herd avg, Buff., NY soy price				CHEESE	1.520	1.592	1.633	1.705	1.770	1.810	1.833	↓	See Below
					CME SPOT CHEESE: BARRELS 1.4675 / 40 LB BLOCKS 1.5000 ↓ ↓									

**USDA SEP-23 NEW	ANNOUNCED FEDERAL ORDER PRICES (\$/CWT)											CURRENT FEDERAL ORDER VALUES (\$/LB) * = NEW												
ALL-MILK BF MAILBOX	CL I ADV ↓	CL II ↓	CL III ↓	CL IV ↓	ALL-MILK-U.S.	ALL-MILK-PA	WEIGHTED AVG. 4-WK DEC. 1-30, 2023			DEC. 2023 COMPONENTS														
\$24.70 3.83 \$23.08	18.48(JAN)	19.88(DEC)	16.04(DEC)	19.23(DEC)	21.70(NOV) ↑	23.10(NOV) ↑	PRODUCT	VALUE	MAKEALLOW	NET	PROT	1.4499 ↑												
\$24.20 3.84 \$22.11	MONTH AGO						CHEESE	1.6234	0.2003	1.4231	↓	B.FAT	2.9778 ↓											
\$24.20 3.92 \$21.55	YEAR AGO						BUTTER	2.6305	0.1715	2.4590	↓	N.FAT	1.0144 ↑											
\$22.20 4.08 \$20.22	22.58	23.11	20.50	22.12	25.40 4.23F	26.60 4.12F	NFDM	1.1924	0.1678	1.0246	↑	OTHER	0.2242 ↑											
\$21.90 4.05 \$21.16	CATTLE - DAIRY PURPOSES (\$/HD) JAN. 10, 2024, New Holland PA) Receipts down slightly from a year ago, but over half (58%) were fresh milking cows and springer cows and heifers, 22% bred cows and heifers, 9% open heifers. Prices \$100-200 lower, except bred cows higher.						DRYWHEY						0.4168	0.1991	0.2177	↑								
\$21.70 3.96 \$20.97	COWS: Fresh	Bred	Springing	HEIFERS: Bred	Springing	Beef x	Open:	300-600 lbs	Beef X	600-900 lbs	Beef X	900-1100 lbs	BULLS (800-1300 lbs)											
\$20.50 4.01 \$19.78	1975	1900	1750 LTD	1700	1800		700	825	N/A	N/A	N/A	N/A												
\$20.50 4.30 \$19.62	MONTH PRIOR																							
\$19.80 4.01 \$19.51	2075	1600	2125	1650	2100		N/A	975	1350	1150														
\$21.30 4.13 \$19.32	FED HOLSTEIN STEERS (\$/CWT LIVELWEIGHT)																							
\$19.80 4.20 \$19.02	Choice & Prime			1250-1550 lbs light test			CURRENT			Beef X			2 WEEKS AGO			YR AGO								
\$18.75 4.11 \$18.79	Premium White			Breakers Boners Lean			375.00			625.00			325.00			550.00			180.00			↑↑		
\$19.20 3.88 \$17.96				101.10 ↓			95.10 ↓			89.75 ↑														

Average to high dressing	TWO WEEKS AGO		YEAR AGO	
	N/A	104.75	95.50	83.25
	N/A	79.85	72.10	66.85

brought to you by:

## 8 Lely A4 Robots For Sale

Available in Groups of 2 or The Whole Package

Kreger and Associates, LLC

www.kregerdairy.com

989-287-2660 | 517-294-3484

# Classifieds

## 1 Services

**FARM INSURANCE:** barns, equipment, hay and grain storage, Workers' Compensation, farm stands and stores, vehicles and farm homes. N.Y., Pa. and Va. Call Alec Pandaleon at 845-242-0113.

**AG PHOTOGRAPHER** - senior, family, natural cattle portraits. Sales, herd dispersals and ag event photography coverage and albums. Based in Lancaster, Pa. A Farmgirl's Dream Photography. 717-824-1320.

**BALING SERVICES - CUSTOM** 3x3 and round baling, along with individual wrapping. Out of southern Lancaster, Pa. 717-826-3775.

**REPAIRING ALL KINDS,** makes, models farm machinery, specializing in discbines, pull type harvestors and corn planters. Also general welding. We also repair older tractors. Harsue Repair, New Holland, Pa. 717-355-0715.

**BOB & MILLIE'S DISCOUNT** signs. The cheapest guys in town. Free delivery on all sign orders. bobthesignman@yahoo.com. Real Estate-Construction-Banners-Yard Signs-Decals-Magnetic Signs-End of Lane Farm Signs. apple treesigns.com. 410-708-1341.

**COMPOSTECH LLC. IS A** local Honey Brook business,

making and selling organic compost at \$30 per cubic yard. Call Dave at 610-441-5154 to schedule a pick up. Also taking horse manure for free, must be dropped off.

**LOWER SCC & IMPROVE** conception. Highly effective, 35 years of time tested results and satisfied dairymen nationwide. No withholding ever feed additive, low cost. Call AG, Inc. today. 920-650-1631. alphageneticsinc.com

**DAIRY PRODUCER** - would you like to lower SCC and mastitis rates, provide milking training, breach the language barrier and improve parlor performance? Call Adolph Dossman at 240-286-8996.

**INNOVATIVE DAIRY** Nutrition - specializing in forage planning to maximize production and optimize herd health through advanced nutrition. To improve your profits, contact Matt at 717-729-4530

**REDUCED PRODUCTION?** Heat stress? High SCC? Scours? Proven effective solutions to your herd's health needs, no withholding. Call the Dairyman's Helper. 800-829-7512.

**CUSTOM COLLECTING** - Call for prices. 301-491-3154. Triple-Hil Sires.

**KANN'S MILKING SERVICE** Franklin & Cumberland Co. 30 years experience, references available. Ryan L. Kann, 717-816-1920.

**BARN FULL? WITH 8+** years experience raising heifers, I am the solution to your problem. Space available now. Call today to discuss this opportunity. 717-860-8867.

**CUSTOM HEIFER RAISING.** Weaned calves to calving. 19 yrs. experience. Modern housing, free stalls, AI breeding, TMR, monthly vet visits. Lebanon Co., Pa. 610-451-3006.

**GARDNER CUSTOM HEIFER** raising. 40 years experience. TMR in fenceline feeders with lockups, dairy veterinarian manages, adolescent to springers, competitive prices. 540-871-0246, dlgar@aol.com, gardnerheifers.com.

**CUSTOM HEIFER RAISING.** 300-400 head capacity. AI breeding, hauling available. We do not have state of the art facilities but are committed to an accelerated feeding program. Call for pricing. Reach us at 240-291-0286.

**HEIFER RAISING SERVICES** offering full health care program, excellent AI breeding program, activity monitor collars, balance ration, pasture for older heifers. Lancaster Co. 717-940-9435.

**CUSTOM HEIFER RAISING.** Good quality forages. Minerals and hay in TMR. Room for 150-200 head. Troy area. 570-220-4542.

**HEIFER BOARDING** - Sand bedded freestalls. Corn silage haylage and hay included. \$2/hd/day. 607-382-3633.

**HORSE BOARDING** available, Willow Street, Pa. area, Lanc. Co. 717-380-7612.

**ADAM'S HOOF TRIMMING.** 22 years of experience. 717-813-1358.

**MID-ATLANTIC HOOF** Trimming - providing farmers professional hoof care in Maryland, Virginia, Pennsylvania and surrounding states. Call Mikey Barton at 518-567-8046 today for inquiries/scheduling.

**HASTINGS HOOF TRIMMING** is looking for clients in Pa., N.Y., Ohio. Call or text 315-283-2717 for a quote.

**CATTLE HOOF TRIMMING,** Western, Pa. Stand up chute, over 10 years in business. Looking for new clients. 814-279-7932, ask for Russell.

**TSHUDY'S HOOF TRIMMING.** Quarryville, Pa. Serving Southern Lancaster, Chester and York counties since 2003. \$11/cow, free wraps. Hydraulic tilt table. 717-917-8715.

**STAND UP HOOF TRIMMING.** Two man trimming crew, excellent cattle flow. Serving South Central Pa. and surrounding counties. Will travel for large numbers. Call Matt Weaver: 814-793-9966.

**HOOF TRIMMING** Service. 717-755-0770.

**PHILBRICK'S HOOF TRIMMING** serving western and central Pennsylvania, western New York and eastern Ohio. 814-720-0010.

**HOOF TRIMMING** - Garrett Co., Md. Tilt table. Willing to

travel distances for large groups/herds. \$10/ cow. Trained at Dairyland Hoof Care, Wis. 301-616-2195.

**HOOF TRIMMING SERVICE** - providing quality service for large and small dairy and beef herds. \$10 per cow. Graduate of Hoof Care Institute. Stand up chute. 315-573-6742.

**MACIK HOOF TRIMMING** - Beef and dairy cattle. Hydraulic tilt table. Serving Western PA, Eastern OH, Northern WV. Phone 724-345-8501.

**PROF. HOOF TRIMMING** - RSW Farms LLC. Hydraulic table, competitive rates, serving MD/PA/NY. Contact Ryan 518-935-7704 or RSW-Farms@yahoo.com.

**MIKE'S HOOF TRIMMING** - Since 1988. Hydraulic table. 814-997-9021.

**PROF. HOOF TRIMMING** - call for more info/available dates. 570-690-1017.

**SHUMAN'S HOOF CARE** - Serving dairies in Northeastern & Northcentral Penna. and the Finger Lakes region of N.Y. Call Tom, 570-418-1684.

**CORRECTIVE HOOF TRIMMING** - New Tuffy -tilt table. Cow comfort, professional work. Call Sam Beiler 717-222-6180.

**NEED YOUR COWS** clipped? Call 717-768-8345 ext 1.

**STRUGGLING WITH MICE** and rats? Try First Strike. Oregon Ag LLC. 717-656-0067.

**DEAD ANIMAL REMOVAL.** Call Mike at 717-855-5503.

**DEAD ANIMAL REMOVAL.** Removal of dead farm animals. 717-228-9500. M-F 8-4, Sat. 8-11 or text.

**LIVESTOCK HAULING** Local/long distance. Pa., N.Y., Ohio, Va. 814-592-2543.

**SILO DEMOLITION.** 717-786-6063.

**HARVESTORE SILO REPAIRS,** extensions, and roof replacements. Call us at 717-786-6063.

**NEED YOUR EQUIPMENT,** building or house pressure washed? We have the equipment to do the job. Call us at 717-644-6295.

**DAIRY SERVICE TECH** - servicing all brands of dairy equipment. South central, Pa. Wes Sollenberger, 814-505-6304.

**CUSTOM COMBINING** services. Well maintained equipment. Reasonable prices. 315-573-6742 for information.

**RESTORING GRANDPA'S** old tractor doesn't have to cost an arm and a leg! Full service repairs, restorations. Agriculture and industrial repairs. York Co. 717-368-1354.

## 3 Dairy Equipment

**50+ PIPELINE MILKING** system. DeLaval one-touch hook-up system with glass jar and stainless milk pump. Lancaster Co., Pa. 610-334-4885. (2/2)

## CERTIFIED ORGANIC CATTLE WANTED

### NICHOLAS MEAT LLC

Modern Meat Processor Paying a Premium For Your Certified Organic Cattle

Purchasing on Dressed Weight and Grade Basis

Nicholas Meat LLC is an approved Certified Organic Meat Processor. We are looking to purchase all your Certified Organic Cattle. Customers can deliver cattle to the plant Monday through Friday 7 A.M. to 1:30 P.M. Nicholas Meat LLC has also established several collection points.

#### Cattle can be taken to:

##### Vintage Sales Stables, Inc.

3451-3457 Lincoln Highway East, Paradise, PA 17562  
Every Thursday from 9 A.M. to 3 P.M.

##### Weikert Buying Station

721 Carrolls Tract Rd., Fairfield, PA 17320  
Mondays from 9 A.M. to 4 P.M.

##### New N.W. Sales Company

2006 Mercer-New Wilmington Rd., New Wilmington, PA 16141  
2nd and 4th Monday of each month.

##### Belleville Livestock Market

26 Sale Barn Lane, Belleville, PA 17004  
Every Wednesday.

##### R&C Calf Farms, LLC

13071 Emerson Rd., Applecreek, OH 44606  
Mon. -Thurs. 9 A.M. to 2 P.M. (Behind sale barn in Kidron)

**Please bring a copy of your Organic Certificate with each shipment!**

Please call the number below to inquire about these collection points or to schedule your sale of Certified Organic Cattle to Nicholas Meat, LLC.

### NICHOLAS MEAT LLC

508 East Valley Road, Loganton, PA 17747  
Please call Nicholas Meat LLC – 570-725-3511



## BEHIND A CLEAN COW IS A PATZ MACHINE

MILK QUALITY PREMIUMS BEGIN WITH QUALITY EQUIPMENT AND SUPPORT.

TRUST YOUR COW COMFORT TO THE PATZ IN-BARN SPECIALISTS.



PATZ CORPORATION | POUND, WI | 920-897-2251

LEARN MORE ABOUT PATZ

MANURE HANDLING PRODUCTS



SCAN ME

### PENNSYLVANIA

Mercersburg	Cedar Crest Equipment LLC	717-660-0060
Myerstown	Cedar Crest Equipment LLC	717-866-1888
Quarryville	Cedar Crest Equipment LLC	717-529-2782
Troy	Fallbrook Fabrication	607-426-0592

### VIRGINIA

Harrisonburg	C&C Farmers Supply Corp.	540-433-8532
--------------	--------------------------	--------------

### NEW YORK

Collins	A.R. Timmel	716-532-2040
---------	-------------	--------------

### Territory Sales Manager

Paul Kratz • 920-897-9212  
paulkratz@patzcorp.com



**60 STURDY BUILT STALLS,** \$1600; 60 cow comfort cow mattresses, \$500; stainless

steel pipeline for 60 cow tie stall barn, \$1500. You remove, haul. Jeremy, 717-437-5215.

*Horse Consignment Auction*  
**600-700 Head** **Friday, Jan. 26** **20 Dealers**  
**Penns Valley Livestock**  
 2925 Penns Valley Pike, Centre Hall, Pa.  
**Starting with AS-IS horses at 7:30 a.m.**  
**Work horses at 8:00 a.m., followed by ponies, riders and drivers.**

*Call by Wednesday, Jan. 24 at 6 p.m. to catalog your horse. If cataloged, you are putting a one week guarantee on it. NO AS IS horses will be cataloged.*

Call (814) 364-1796 (leave message) or fax to (814) 364-1426.

**5% commission - Minimum of \$25 - Max \$100**  
 Pick up your check same day.

You may start bringing horses in Thursday night.

**Kitchen open for breakfast.**

**Auctioneers:**  
 Atlee Shetler AU005270 | Vernon Yoder AU005267  
**Managers:**  
 David Bierly | Erica Smith

**SURGE 4HP BULK TANK,** compressor, \$500 OBO; 36 inch Mega Flow exhaust fan, \$900 OBO. 814-521-4100.

**7X10' CONCRETE H FEED** bunks, \$300 each; 25x12' headlocks, \$150 each. 724-309-1990. (2/23)

**4' X 6' COW MATS. GOOD** mat for the money and easy to install. \$80 each, including hardware. 717-304-6684.

**USED MILK TANKS - 375** gal. Milkepper; 600 gal. Mueller M; 800 gal. Mueller OH; following tanks are storage only: 1500 gal. Mueller O; 800 gal. O. T.H. Horning. 717-438-3104.

**GUTTER GRATES FOR** tiestall barns. Innovative design prevents hoof injuries. Call for more information and current pricing. 717-464-6476.

**4 Dairy Cows**  
**CERT. ORGANIC COWS.** 570-250-1725. (2/24)  
**BUYING, SELLING** dairy herds, heifers and service bulls. Aaron Coons, 717-816-4118.  
**JUST FRESH, 1ST LACTATION** Reg. Holstein cows. Good quality, well grown animals. 3-4 generally available each month. 570-297-5118.

**5 Heifers & Calves**

**2 A2A2 JERSEY GUERNSEY** cross heifer calves. \$85 each. 717-529-1233, ext. 1.

**6 Dairy Bulls**

**B&W AND R&W POLLED** homozygous Holsteins, A2A2. Some genomically tested also. Lebanon Co., Pa. Con-Ger Farms. 717-821-1454.

**WANTED - Reg. Jersey bull,** 12-15 mos. old. 856-478-2942.

**REG. HOLSTEIN BULLS** for sale. Ar-Joy Farms, Cochranville, Pa. 610-637-7423.

**HOLSTEIN BULLS** ready for free stalls and younger. High genomic tested bulls from contract matings and high type cow families. 610-932-6062. Call btw. 8 -8:30 a.m.

**BULLS FOR SALE & LEASE -** Reg. Holsteins, any age out of dams with records to 30,000M, 1200F. Stump Acres. York Co. 717-792-3216.

**7 Semen, Embryos**

**4 #1 FEMALE EMBRYOS** from a conventional flush. Sired by Unstoppabull. Tattoo dam is maternal sister to Crushabull. Already VG-88 at 2-05. 301-988-1057.

**SEMEN TANK, HOLDS** nitrogen well. Breeding kit, semen content included. \$850. Sold cows. Berks Co., Pa. Ask for Allen. 484-256-6108.

**HELSEL-HILL HAS** expanded. Call or text Keith Helsel for No Bull sires, Blondin sires, Resolution-Red, Furnace Hill Zas Endure, and more. 814-515-5455.

**91HO5821 MARTIN-DALE** Jonah Joseph AAA 426. Sire stack is one of the best in the Holstein industry. Jonah x Mr

America x Adolph x Leader x Aerostar. Dam of Joseph Josephine 3E, 91 pts. Just finished her record as a nine year old. 26,772 milk, 4.8 butterfat, 3.7 protein. Use this sire to improve rump, feet and legs and overall strength. Have questions, call Martin-Dale Holsteins 717-445-6548. Need semen call Stolhaven Genetics 717-672-1838.

**CUSTOM COLLECTING - WE** custom collect your bull at our facility. Semen is processed with high quality standards at very competitive rates. We also offer short-term housing options during collection. Triple-Hil Sires 855-955-2100.

**DONEGAL-CREEK BAXTER** Pedro-ET, reg # 139932533. He is EX-94 AAA (4352). From 5 EX dams- 94, 90, 91, 91 & 95. Dam is 94 pt. Outside daughter, still in herd at 10 yrs. old & looks half her age. Sire stack is Baxter, Outside, Rudolph, Conquest, Starbuck, Citation R, Elevation. Very well balanced bull siring the right kind. Strength with dairyness. High productive life, low SCC, high conception. Early daughters are milking great & look better than their dams. Priced at \$14 for 20 units or more. Joe Wivell 717-471-5260.

**9 Equipment & Machinery**

**NEW HOLLAND RB450** round baler. One owner, only 3400 bales. 1000 pto, monitor, net/ twine, good belts. Asking \$26,500 OBO. Ephrata, Pa. 717-799-3698.

**2016 TEAMCO 5800 GAL.** manure spreader. Marine aluminum tank, brakes. Like new. \$58,000. 814-483-0848, ask for Todd.

**CLAAS FORAGE** harvester 2012 Jaguar 930 494-series, 4WD, 410HP, 2660 cutter hrs. KP. Inspected with warranty.

Call for details. \$138,000 or \$155,000 with 6-row head. 717-400-7917. (1/26)

**SELF-PROPELLED** forage harvesters and heads available. Claas, John Deere and New Holland. Visit [www.cvfequipment.com](http://www.cvfequipment.com) or call 717-400-7917 if looking for a particular model.

**RISSLER 1 YARD** self-unloading skid loader bucket w/8" unload auger. 717-463-9731.

**FOR RENT: E RISSLER 330** trailer TMR mixer, \$30/day; IH Rissler 510 TMR cart, \$10/day. Delivery avail. Myerstown, Pa. 484-793-2179.

**ROOFERS BUGGY-RENT** for \$125/day or \$500/week. Lancaster Co., Pa. Call 717-808-4155.

**10 Feeds**

**1ST, 2ND, 4TH ALFALFA** tested, 3x4x8' Chinook dried straw. Delivered or FOB. 610-767-2409, heidelhollowfarm.com.

**BUYING DAMAGED GRAIN.** Trucking is available. Call 717-575-5197.

**CERTIFIED ORGANIC KEMP** meal. Redmond minerals. Dealers available in select areas. Hess Farm Supply. 717-354-9492.

**FASTRACK -** Improve milk production, increase feed utilization and improve herd health with Fastrack direct fed microbials. Contact Karl at 740-504-2859 or email [klbss@columbus.rr.com](mailto:klbss@columbus.rr.com).

**11 Hay**

**BROME GRASS TIMOTHY,** \$210/ton, big and small square bales; certified organic baleage, 4th and 5th cutting, 3x3x6 bales. \$2/point of RFQ dry matter. Juniata Co., Pa. 814-880-5186. (1/26)

**BRUBACKER'S QUALITY DAIRY SALES, LLC**  
 10 BROWN ROAD, SHIPPENSBURG, PA

**Thursday, January 25 @ 10:00 A.M.**  
**Special Dairy Cow & Heifer Sale**

- ★ We are expecting a good selection of fresh and fancy, 2 and 3 yr. olds out of local overstocked herds and heifer growers. Mostly A.I. sired with several good Registered cows, with most on test w/ low SCC and lots of milk!! Including eight fresh cows from one farm fresh less than 60 days!!!
- ★ Frey Farms Dairy herd dispersal from Chambersburg, Pa. This is an exciting addition to our sale and the quality will please anyone! Only the best cows are being sold with a great selection of cows recently fresh as well as a scattering in various stages of lactation. On DHIA, with cows milking up to 130 lbs. per day including 30-35 in 1st and 2nd lac. Housed in sand bed freestalls and milked in parlor. They are also selling 15 to 20 heifers, due June to Aug. A.I. sired and bred with great frames and excellent udder promise!! Don't miss this opportunity to ad some great cows and heifers to your herd!
- ★ 10 cows consigned by Daniel Brandt including a fresh and fancy Moovin dau., potential VG-87 and already milking 80 lbs.! Dam VG King Doc back to Apple-Red EX-96!
- ★ Also a nice selection of heifers from healthy calves to close springers!
- ★ 5 close springers from one farm, w/ nice frames and good feet and legs!
- ★ Reg. R&W March heifer, sired by Amazing-Red! Dam unscored 2 yr. old. Mggd VG-87 4-04 305 29,930 3.4F!
- ★ Reg. R&W Unstoppabull-Red! Dam VG-85 5-01 276 25,140 4.1F 3.2P! Next two dams EX-90!
- ★ Several breeding age bulls out of good cow families! Including a proven grade Lineback.
- ★ 16 mon. R&W Alabama-Red son! Dam Aristocrat-Red sold for dairy. Mgd EX-90 5-02 365 33,670 3.3F 3.3P. Mggd EX-94,3E 7-11 365 37,680 4.1F 3.2P! Proven Breeder!
- ★ 19 mon. R&W Unstopabull-Red! Dam VG-85 5-01 276 25,140 4.1F 3.2P! Next two dams EX-90!
- ★ 13-month-old Crushabull son! Dam EX-91 w/ 30,000 lb. 4.6F! Next eight dams VG or EX!

**NOTE:** Need that special cow or just a good replacement? Come spend the day with us! We're selling a great selection of dairy cattle right off the farm. All cattle vet checked and vaccinated. Trucking available. Can't make the sale? You can now participate online at [Cowbuyer.com](http://Cowbuyer.com). For on-line questions, call Katie Shultz 717-543-7883.

Manager/Auctioneers  
 Jason Brubacker Lic. AU5608 717-729-0173  
 Darryl Jones Lic. AU5194 717-226-0776

Sale Barn  
 Ivan Brubacker 717-414-6657

Pedigrees  
 Art Kling



**WOODMOHR NORTHERN LIGHTS**  
 ~Online dairy sale~  
**Monday, January 22, 2024 • 6 p.m. Eastern**  
 Wendy and Jon Schmidt • 715-933-0281  
 Bid via [COWBUYER.com](http://COWBUYER.com)  
**Deep pedigrees - Calves, Yearlings, Brood Cows**

**SOYBEAN ROASTING ON YOUR FARM**

- Full-fat roasted soybeans for maximum feeding value
- High-energy, bypass protein and palatability
- Toxic enzymes and molds destroyed
- Custom roasting in MD, DE, PA & Southern NJ

**HORST GRAIN ROASTING**  
 Chester Co., PA  
**(717) 926-4310**

Free ice cream

**NEW HOLLAND SALES STABLES, INC.**

Free ice cream

Located 12 Miles East of Lancaster, PA. Just Off Rt. 23, New Holland

**DAIRY COW & HEIFER SALE**

**WEDNESDAY, JANUARY 24<sup>TH</sup> • 10:30 A.M.**

**Mature fresh cows milking over 100 lbs. and with low SCC are in demand.**

**All sizes of quality Holstein heifers both open and bred are wanted.**

Consignors: Please send all info with truckers for the catalog.  
 For more information, contact dairy reps:  
 Aaron Martin, 717-445-4825 (home); Bill Hough, 973-224-0204 (cell).

REMINDER: *Thank you - N.H.S.S.*  
**Friday, February 2<sup>nd</sup>,** start time 8 a.m. Special catalog draft horse sale. Horses will be sold in numerical order.

Sale Managed By  
**New Holland Sales Stables, Inc.**  
 Barn 717-354-4341 Fax 717-355-0706 • David Kolb, Mgr. 61L

**ALFALFA BALEAGE**, 4x4 wrapped round bales, \$50 ea. Also, small square bales alfalfa or grass, various prices. Richard Trinca, 814-349-8010. (3/29)

**CERT. ORGANIC 1ST, 2ND** and 3rd cutting balage in tubes; 4x5 dry round bales heifer dry cow hay. Delivery available. 570-250-1725.

**HIGH QUALITY 1ST & 2ND** cutting grass hay, 3x3x7 bales, low potassium. #1 hay, tested. Lebanon Co., Pa. Con-Gen Farms. 717-821-1454.

**CERTIFIED ORGANIC** mixed grass and clover hay. Call from 7 a.m.-4 p.m. 717-463-9731, leave message.

**ROUND BALES OR LARGE** squares. Delivered by ton loads. Coons Farms. 717-816-4118.

**HAYBUSTERS** - Dairy and beef quality alfalfa, low K hay and straw. Large and small squares. Call Mark at 800-371-7928, or visit www.haybusters.com.

**12 Straw & Bedding**

**CHOPPED STRAW** in 3x3x6 bales. Good for bedding or TMR mixers. Available now. Lebanon Co., Pa. Con-Gen Farms. 717-821-1454.

**HIGH QUALITY SAWDUST** available for delivery. Great for dairy and beef cattle. Call 301-334-6212 for delivery range, pricing and availability.

**USE BALED SHAVING** in your dairy barn. You'll love this very fine pine bedding. \$5.50/40 lb. bag. 610-273-3602.

**HAY, STRAW**-any type, quality. Call 717-253-6049 for pricing.

**15 Vehicles & Trailers**

**TRAILER PARTS, TOWING** accessories, trailer hitches, and cushion hitches. UPS to your door. Weaver Distributing. 1-800-Weaver-D. Save!

**16 Fencing**

**TIMELESS FENCING** - The post is the insulator. Versatile design is self-insulating and easy to install for sheep, goats, cattle & horses. Allegheny Meadows. 814-285-1541.

**17 Silos**

**USED A.O. SMITH** model 1250 Slurry Pump with agitation nozzle and load out line. 717-463-9731.

**SILO DEMOLITION.** Contact Beiler Silos. 570-745-3574.

**HARVESTORE SILO ROOFS**, affordable white or stainless. Solve spoilage. Sheet replacement, silo demolition. Parts, repairs on Harvestore and stave silos. 717-517-2080.

**HARVESTORE SILO REPAIRS**, demolition and removal. Used replacement blue or white silo roofs, door frames, doors, lids, breather bags. Installation available. 717-768-0452.

**BEILER SILOS - SILO PARTS**, sales, service. New and used silos. Shotcrete relining. Foundation repair with Shotcrete. Tear down and rebuild. Silo doors made to order. 20 years

experience. Serving Lycoming and surrounding Co. Jersey Shore Pa. 570-745-3574.

**I BUY USED SLURRYSTORES.** 315-404-6721/315-495-6506.

**SILO DOORS**, galvanized steps and latches, poly door panels cut to size for all types of silos. Quality products are always a good investment. Meadow Springs Farm, Gordonville, Pa. Sales brochures and quotes call J. Elmer 717-768-3337 ext.1.

**RE-BUILT SILOS**, New or used, relines, parts and repairs. SR Silos: 717-527-4103.

**S & S SILO SERVICE** - We erect silos, repair silos with shotcrete, repair concrete walls, stone walls, and foundations with shotcrete. Serving the shotcrete and silo industry for 25 years. 610-273-3993.

**MANUFACTURERS** of silo doors and hardware. Double thick tongue and groove cedar poly and plywood doors. Hardware is powder coated. Agri-Door. 717-949-2034.

**19 Real Estate**

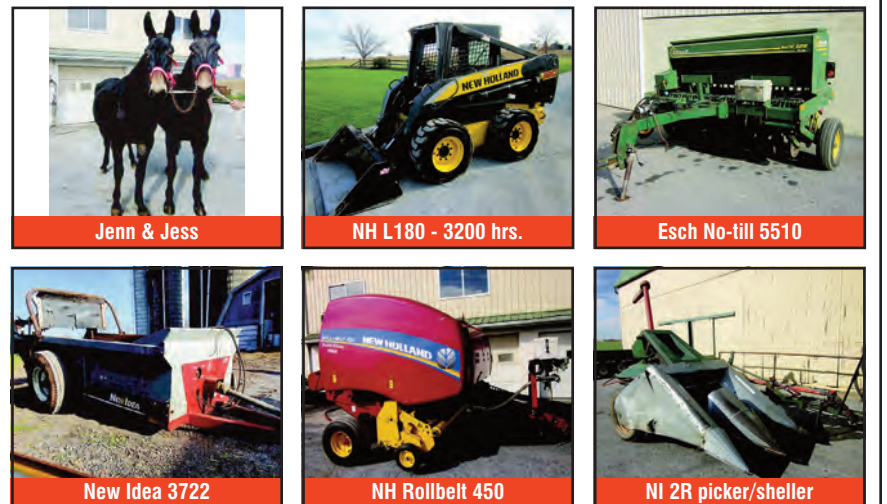
**10.2 ACRE ORGANIC** vegetable farm rent/partnership for 2024 in Lock Haven, Pa. Guaranteed sale. Looking for an experienced person with flat beans, thin clay peppers, small bell peppers, red meat peppers. 917-865-7658.

**NORTHERN PA.** year round home with spacial property. Gorgeous mountain views, near State Gamelands and developed bicycle trail. Sits high and dry. 717-856-2024.

- Clay / Litzitz Area -  
**King FARM AUCTION**  
11 Mules - Holstein Bull - 52 Holstein Heifers  
Tractor - Skidloader - Forklift - Esch Drill - TMR Mixer  
Farm Machinery - Power Carts - Baleage - Corn Fodder

**= RESCHEDULED =**  
**Wednesday, January 24 @ 9:00 a.m.**

Location: 1300 Clay Road, Lititz, PA 17543 (Lancaster Co.)  
Directions: Follow Rt. 772 North of Brownstown to Rothsville. Bear right onto Newport Rd. Continue to Clay Rd. Turn right. Follow approx. 3 miles to auction on right.



**Jenn & Jess**: Pair 17.3H black mollies. Jenn: 9 yr. old lead mule. Broke to all machinery. Can't hitch wrong. Jess: 6 yr. old. Line or jockey. EXCEPTIONAL MULE! Jim & Jack: Pair 15 yr. old, 17.1H sorrel jacks. The main line team. Steady. Safe. Duchess: 6 yr. old, 17.1H black molly jockey mule. Up against all day long. Ted: 16 yr. old, 17.2H sorrel jack. Strong! Works like a 5 yr. old. One of a KIND! Red: 18 yr. old, 17H red sorrel jack line mule.

**- 11 MULES -**

**- ALFALFA BALEAGE - CORN FODDER -**

Alfalfa baleage 100+ 4 x 4 1/2 rmd. Bales - individual wrapped - Analysis sale day. (13) 6th cutting, (20) 4th, (36) 3rd, (45) 2nd.; Corn fodder: 60 rmd bales (4 x 4 1/2)

**- MISC. FARM RELATED -**

**Lg. size pony cart w/brakes, oak stain & hard rubber tires;** Miller AEA-200L portable welder with Onan eng. (fresh tune up); Swisher 60" pull type mower w/20HP Honda; 275 gal. tote w/28-0-0-5 liquid nitrogen (approx. 30 gal.); 48" x 60" x 40" hyd. Dump box w/forklift pockets; Pallet jack; Shovel harrow; (2) 8" x 39" 8 lug. Stl. Whls. And others; Set of tandem beams w/9" x 28" stl. Whls.; 9,000 tob. Lath; 8' harvester table for JD; Smucker 32" barn dri spreader; 275 gal. Fuel tank; Acetylene torch set w/cart; Honda 5000i portable generator; Deutz 2011 2 cyl. Dsl. w/speed clutch (needs over haul); 4' x 16' feeder; 8 leather harnesses; Collars, bridles, lines, etc.; Draft size bio spotted show harness with britchman & breast collar - like new; 4 sets tandem ropes; 2 to 8 horse hitch eveners

**- Selling for Levi Jr. & Mary Ellen King 717-627-4864 -**

**Esch NoTill 5510 10' grain drill w/grass boxes (5821 acres); '06 Springside 2 whl., power cart w/Deutz F3L 1011 4 cyl. 50HP dsl. w/Tayloria 540 clutch, dual hyd., sliding axle, air bags, auto-steer & brakes; NI 325 2RN picker/sheller w/long PTO & hyd. Swing; NH 455 mower w/9' bar & 4 cyl. Wisconsin; NH 27 Whirl-a-Feed blower; General Repair auto turn forecart w/offset tongue; Gehl hammermill blower; Dion 16' silage wagon; White Horse 396 2 x 12 hyd. Plow; JD KBA 28 blade disk; 9' cultipacker; 9' harrow; Mc 1 row cultivator; NI 1 row transplanter; Killbros 350 gravity wagon; McCurdy gravity wagon w/32" stl. Whls.; I & J corn binder w/alum. Loader; (1) 7 1/2 x 16 & (1) 7 x 16 wagons w/Farmbilt gear; (3) 8" x 38" diamond tread 8 lug. Whls.; Rissler 24" x 19 1/2" incline/3' bottom conveyor; Rissler 12" x 24' single chain conveyor; Lombardini 3 cy. Dsl. w/Rockford PTA5822 clutch; Lombardini 2 cyl. Dsl.; 4500 old lath**

**- FARM MACHINERY -**

**Planting & Tillage:** JD 7000 4RN planter w/liquid fert., squeeze pump, row cleaners, notill coulters, RID depth whls. Post closing whls., insecticide and hyd. Unit w/5 1/2 HP Honda; JD 8300 12' double disk grain drill w/hyd. Lift (7" spacing) on rubber; White Horse 391 2 x 14" hyd. Plow; JD KBA 28 blade disk; Cedar Hill 10' s-tine folding harrow; 12' harrow; 9' sprocket packer

**Hay & Forage Equipment:** NH RollBelt 450 Silage Special 4x5 rmd. Baler, net wrap, monitor, light kit, P45 forage applicator, on rubber (only 3517 bales - 1 owner); NH 258 hyd. Rake w/Georgetown hyd. Unit & 9HP Honda; NH 256 rake w/rubber teeth (good cond.); Pequea 7' grnd. Drive tedder; Corry 300SL Roll-off bale wrapper w/lift arm, dbl. 20" wrap and hyd. Unit w/13HP Honda; JD 5' hay head; JD 3940 harvester w/2RN head (1000 RPM); JD 16' forage wagon w/9" x 28" stl. Whls.; Gehl 99 Hi-Throw blower

**Misc. Equipment:** Cedar Hill 1100 gal. spreader w/new engine; Dry Hill 8' portable pump w/hyd.; NI 214 spreader w/2 beaters & wide spread and new web chain - on rubber; Gravity wagon; 15 Fisher 300 gal. trailer sprayer w/45' booms, foam markers, rinse tank, 5 1/2 HP Honda and cables & winches for boom position (good cond.); White Horse 607 auto turn forecart w/torsion axles; 3 other forecarts; 93" x 18' wagon w/new bed on Farmbilt tandem axle gear; 93" x 16' flat wagon

**- FEEDING EQUIP. & DAIRY RELATED -**

'09 NDE 1402 portable mixer wagon w/digi. Scales (new planetary gear in 2023) needs liner; Weaverline 430 feed cart w/charger (4830 hrs.); 1 new S & L silage cart w/Honda eng. & 2 for parts; Martin 18" wide conveyor (16' wooden incline w/5' poly bottom) w/poly slats & hyd. Motor; Martin 18" wide conveyor (8' wooden incline/3' poly bottom); Martin 24" x 16' conveyor w/ hyd. Motor; SS pumping station w/100' hose (v.g. cond.); 6 Delaval pistol grip pipeline milkers w/Delatron pulsation, SS hanger & Flo-Star claw; (3) 75 & (3) 60 lb. buckets w/lids; 5 Delaval pulsators; SS 30" filter box

**Auctioners:**  
Tim Weaver 717-354-9524  
Dave Stoltzfus 717-768-7526  
Lic. # AY2109

**Tim Weaver AUCTION SERVICE**  
717-354-9524  
Honesty • Integrity • Commitment

**Auction for: Samuel & Rachel King**  
717-626-6450 and others

Steve Schuler 717-666-4381  
Matt Martin 717-738-0328  
See more @ auctionzip.com, ID#25403

**SOLLENBERGER SILOS**  
5778 Sunset Pike  
Chambersburg, PA 17202

*Poured Concrete Silos for Farm and Industry Since 1908*

For information call:  
**Ken Mansfield**  
717-503-8909  
www.sollenbergersilos.com

**FOR ALL YOUR HOLSTEIN NEEDS**  
COWS-HEIFERS-BULLS-HERDS

**DANIEL ALBRIGHT**  
1866 Landisburg Rd.  
LANDISBURG, PA 17040

PHONE: (717) 789-3241  
FAX: (717) 789-4993  
EMAIL: dalbright44@embarqmail.com

**Precast Systems, LLC**  
Producing concrete since 1923

**FEED BUNKS  
BUNKER SILOS  
CATTLE GUARDS**

NCPA certified plant  
Installed on site  
717-369-3773  
www.precastsystemsllc.com  
5877 Bullitt Rd. Greencastle, PA 17225

**Absolute Auction**  
Saturday, February 3, 2024  
at 10:00 a.m.

Estate of Allen Tignor (Deceased) & Benjamin B. Ellis Inc.  
27205 Sparta Rd., Bowling Green, Va.

**Trucks:** 2003 Freightliner Columbia, 2001 Volvo VE Road Tractor, 1988 KW TA100 Road Tractor, 1976 Mack R-600 Road Tractor, 2000 Int. 4900 Spreader Truck, 1990 Ford F-600 10ft. Gravel Truck, 1986 GMC 7500 10 ft. Gravel Truck, 1985 Ford L8000 16ft. Gravel, 1984 Ford L8000 Ten Wheeler, 1972 Chevy C-60 Ten Wheeler, 1985 Int. 1954 w/ SS 1400 Nurse Tank, 1978 Ford F-700 16ft. Grain Truck.

**Trailers:** Timpte 48ft. Hooper-bottom, Utility 48 ft. Refer, Dorsey 36 ft. Dump, Fruehauf 32ft. Flatbed, Fruehauf 4500gal. Tanker, 2001 Sumpreme 6X16 Gooseneck Livestock.

**Tractors:** JD 7810 4X4, JD 7420 4X4, JD 4040 2wd, Case-IH 140 4X4, JD 4850 4X4, JD 730 Gas (Parade Ready), Int. 574 diesel (doesn't run), Farmall Super A w/ Cultivators, JD 655B Tack-Loader, 2 - JD 9770 STS Bullet Rotor Combines, Case IH 1460 Axial-flow Combine.

**Tillage:** Case IH 330 35ft. Vertical-till, Case IH 2500 Ecolo-till 6 Shank, DMI 2500 6 Shank Ripper, Kuhn 25ft. Excelsior, Sunflower 9421 25ft. No-till Drill, Kinze 3600 12/23 No-till Planter, JD 1560 No-till Drill 15ft., JD 1780 12/23 No-till Planter, Case IH 5400 15ft. No-till Drill.

**Directions:** From Bowling Green, Va., take Rt. 301 South approx. 3 miles, turn East onto Rt. 721 Sparta Road, go 10 miles farm on left.

**Announcements:** All announcements made Sale Day will take all precedence over all advertisements, verbal, or any other statements. Everything is sold AS-IS, WHERE-IS with no warranty expressed or implied. Buyers will do their own due diligence, make their own assessments. Neither Benjamin B. Ellis nor Roger Miller/Roger Miller Auctions LLC will be liable for any accidents.

**Viewing only:** Thursday, Feb. 1st and Friday, Feb. 2nd from 9 a.m. til 4 p.m. **Removal:** All items must be removed by Wednesday, Feb. 7th. Loader available sale day. **Questions:** Call Roger at 757-784-2326 or Benjamin Ellis 804-370-4968. For more info go to our website www.rogermillerauctions.com.

**Terms:** Cash, Good Check, Credit Card (a 3% convenience fee for credit cards).

**NO BUYERS PREMIUM**

**Roger Miller AUCTIONS & APPRAISALS**  
VAL 1832 - PO Box 481, Surry, VA 23883 - 757-784-2326

For complete listing and more photos, go to:  
**rogermillerauctions.com,**  
Auction Zip and Auction Look.

**20 Wanted**  
**ONE HORSE FORECART.** 717-529-1233, ext. 1. (2/9)  
**LOOKING TO BUY** Land O'Lakes equity. 717-768-0452. (2/9)  
**QUALITY DAIRY HERDS,** springers, open, bred and fresh heifers. 570-504-4443.  
**ROTARY TYPE SELF-PROPELLED** tiling machine; used manure screw press; small older/cheap pull camper (like the Scotty's); person that fabricates stainless steel. For

more information, call Sherman Allen 814-671-9947, cell/text, works 24/7, has voicemail.  
**BUYING HARVESTORE** silos & Slurrystores. 717-517-2080.  
**ISSUES OF HOLSTEIN** World, Jersey, Brown Swiss, etc. (all other dairy cattle breeds) magazines, sale catalogs and sire directories. 716-255-5625.  
**I AM STILL LOOKING FOR** used books and publications about dairy farming, printed early to late 20th century. Interested in all farming related topics. Paying cash. Phone Owen Backus, 608-479-0811.

**I BUY TRUCKER HAT** collections. 215-896-5609.  
**PREMIUM PA FARM SHOW BOOKS.** Years needed 1923, 26, 28, 31, 33, 34, 50 and 52. Contact C. Sherman Allen, 11367 St Hwy 285, Conneaut Lake, Pa. 16316 814-671-9947.

**21 Opportunities Wanted**  
**FAMILY LOOKING FOR** dairy farm to rent or possibly rent to own. 717-327-8985.  
**YOUNG FARMER** looking for a dairy farm to rent. Ideally rent to own situation in Pa. or Md. 717-824-1320.  
**OLDER MAN SEEKS** part time/full time work on farm with on-farm housing or nearby. Prefer Franklin Co. area or nearby. Consider other areas. 717-816-9693.  
**INDIVIDUAL SEEKING** herdsman position or looking to rent approx. 50 cow dairy farm. 814-442-5782.

**22 Help Wanted**  
**LOOKING FOR MATURE** person possibility to take over dairy farm in South Central N.Y. 607-382-5660.  
**FOREPERSON/HERDSMAN**-full time. Care for health management of the school's animal populations and in the general operation of farm equipment. Assists in student's education. Send resume to Ted O'Harte at eoharte@norfolkaggie.org. Norfolk County Agricultural High School, Walpole, MA. 508-668-0268 ext.16112.  
**FEEDER/GENERAL LABOR** help needed on 600 cow dairy. Equipment experience preferred. Valid drivers license required. Possible housing available. Contact Kyle at 717-644-7879. Halifax, Pa. (1/26)

**23 Pets**

**JACK RUSSELL PUPPIES.** 724-591-3675, no Sunday calls please. (2/9)  
**BLUE HEELER/LAB CROSS** puppies. Should make dandy farm dogs. Ready mid-January. \$480 OBO. 717-786-8182. (1/19)

**24 Seeds**

**ALFALFA, GRASS MIXES,** oats and sorghum. Hefty brand and Augusta seed corn. Jacobsen GT soybeans. Leabrook Ag, call us at 717-898-9576.  
**NEED SEED OATS?** We can obtain almost any variety. Also publish quarterly oat marketing newsletter. \$12/year. J.C. Goss, Box 312, Hurley, MO 65675, 417-708-7860.  
**KING'S AGRISEEDS,** feeding your farm's future through high energy forages, and soil building cover crops. Lancaster, Pa. 717-687-6224, info@kingsagriseeds.com, www.KingsAgriSeeds.com.  
**CORN SEED. PRICING** starting at \$129/bag (before discounts). De Dell Seeds, the leaders in Non-GMO corn. 519-264-CORN.  
**ALFALFA, CORN, SOYBEANS** and more! Call us for all of your crop needs. Growmark FS-Eighty Four. 724-222-4303, www.growmarkfs.com.  
**TRY THE NEW WINNER 2015** World Forage Analysis Superbowl - Alforex Hi-Gest 360 Alfalfa, cutting edge di-

gestibility. Hess Farm Supply 717-354-9492.  
**SEED CORN** - Partners brand, Mid-Atlantic, Prairie Hybrids. Lots of customer satisfaction. Dairyland hybrid alfalfa's quality yield digestibility. Oregon AG, 717-656-0067.  
**HUBNER SEEDS** - Alfalfa, Corn, Soybeans, call Merle Stoltzfus. 717-224-0700.  
**APPLY AGROWSIL TODAY** Quick and long lasting PH increase, increased yields, soil nutrient release, disease and stress tolerance, and drought tolerance. 1-800-850-0527.

**25 Miscellaneous**

**STOP FLIES.** Great products. Fly parasite plans. Cedar solar traps (the best). Zapper that just keeps zapping. www.dairyflyparasites.com. 888-771-3276. Useful Farm Products.  
**LOOKING TO GET RID** of insects? Buy bluebird or tree swallow houses. Plus more. 717-529-2326, ext. 1.  
**CLEANING OUT YOUR** attic? We'll take any magazines, newspaper, books, etc. for old man to shred for horse bedding. Call now. 717-529-2326, ext. 1.

**27 Livestock**

**HEREFORD BULL, 20** months old, good disposition. \$1800. Columbia Co., Pa. 570-380-3047. (2/2)  
**ANGUS BEEF, READY FOR** slaughter. 570-488-6596.

**Fresh cows December/January for sale from a Maryland farm. Free Hauling to Amish area/Lancaster, Pa.**  
 \$2,500 per head and above per cow  
 ✓ 24,000 lb. herd average  
 ✓ 1000 lbs. Fat  
 ✓ 800 lbs. Protein  
 ✓ SCC 100,000 – 150,000  
 ✓ BAA 105 & up  
 ✓ Current production 80 lbs./day  
**Kevin Leaverton**  
**443-496-2605**

FINE GROUND *Wood Bedding*  
**Dry, Absorbent BEDDING For Sale**  
 14 yd, 30 yd, and 110 yd loads  
 Call for Pricing  
*Buy in bulk and save!*  
**BEILER INDUSTRIES**  
**717-768-7667**

• WHOLE COTTONSEED • CORN • 48% SOYBEAN MEAL • ROASTED SOYBEANS •  
 CANOLA MEAL LINSEED MEAL  
**TRIPLE • M • FARMS**  
 Custom Feed Mfg.  
 WE MIX FEED ACCORDING TO CUSTOMER AND NUTRITIONIST FORMULAS  
 Also Available:  
**BULK COMMODITIES**  
 Call Us At:  
 (717) 272-3225  
 MINERALS NON-GMO  
 • SOY PLUS • AminOleic • BLOOD MEAL • BEET PULP • FAT PEAK •

**Give Us A Call!**  
**In These Times We Know Many Items Are In Short Supply**  
**We Have In Stock**  
**3000' Gutter Cleaner Chain**  
 • Patz LH CC high flite gutter cleaner chain, 280', like new  
 • 6 Vertical Mixers  
 • Hook & Eye and Flat Chain  
 • Roller Chain #25 to 200  
 • Single Double Triple & Quad  
 • 2500 V Belts  
 • New, Used & Rebuilt Silo Unloaders and Parts For Many Makes  
 • Large Supply of Bearings  
 • 30 Silo Unloader Augers  
 • Large Supply of Electric Motors - New, Used, Rebuilt  
 • Scales, Lead Cells, Cord, etc.  
 • Weaverline Parts & Batteries  
 • Mixer Parts  
 • Pulleys & Sprockets  
 • Ag Bag Bearings & Chain  
 • We make hydraulic hose •  
**Give us a call for hard-to-find items**  
**A.R. Timmel • 716-532-2040**  
 Cell 716-868-8018 or email artimmel@aol.com  
 13553 North Division St., Collins, NY 14034

**Replacement Silo Doors**  
 Many Kinds In Stock  
 • Marietta  
 • Fickes  
 • Madison  
 • Terre Hill  
 • Lancaster  
 • Ribstone  
 Silo Door Hardware  
 • Butterfly Hinges  
 • Latches  
 • Steps  
 • Ladder  
 Silo Doors Made To Order  
 Bring Pattern of Old Door  
**Willow Road Silo Doors**  
 Daniel Beiler  
 624 Willow Road  
 Lancaster, PA 17601  
**717-394-1004**

**For Sale**  
**4430 John Deere**  
 New battery, new water pump, rebuilt alternator.  
**\$21,000**

**For Sale**  
**3 point ZML**  
 6-unit 24" dragline injector  
**\$56,000**

**For Rent**  
**15 foot Plant Right**  
 Excellent for grass, small grain and soybean.  
**Rate per acre \$16**

**Sell your Holsteins through PHA!**  
 • Wanted: Sire ID'd or registered free stall herds.  
 • Wanted: 160/month! Reg. or sire ID'd open heifers, ready to breed. Must be negative Leucosis, BVD & Neospora. Call today!  
**Upcoming sales:**  
 • February 10, 2024 – PA Holstein Convention Sale, Scranton, Pa. Selections are underway.  
 • March 23, 2024 – DVU Green & Gold Spring Spectacular, Doylestown, Pa.  
**PA Holstein Sales**  
 Pennsylvania Holstein Association  
*Herd dispersals done right by trusted sales management that is licensed and bonded!*  
 Contact: David J. Lentz, 717-329-9202, djl1018@pa.net or PHA office, 814-234-0364. Email: director@paholsteins.com

**Zimmermans**  
**Glasslined Storage**  
 Oakland Mills, PA  
 36 Yrs. Experience • Silos & Tanks  
**717-463-9731**  
 www.silosandtanks.com

Pre-Owned Slurrystores® and Harvestores® in Inventory - Ready to be built **COMPARE OUR PRICES & QUALITY**

**FUSION** TANKS & SILOS  
**AISTOR** Stainless Steel Engineered Roofs  
**Zabel Equipment** Hydraulic Manure Pumps  
**DRYHILL** Manure Pumps  
**afs automatic Hammermills**  
**E. RISSLER MFG.** Spiro Mixers  
**Quality Parts, Inc.** Harvestore® Aftermarket Parts  
**Challenger** Slurrypump HOT-DIP GALVANIZED

Rebuilt Harvestore® Unloaders In Stock - installed with a 2 year warranty  
**WE SERVICE WHAT WE SELL**  
**SERVICE DEPOT**  
 Alvin Eberly Harrisonburg, Va. 540-820-0818  
 Norwain Acres Orrville, Ohio 330-621-1276  
 Zimmermans Oakland Mills, Pa. 717-463-9731  
 Zimmermans is not affiliated with CST Industries, Inc.

**Green Equipment LLC**  
 New Providence, Pa. • 717-371-4194

# CURTAIN SYSTEMS

*from Design to Installation*



**DAY-STREAM VINYL CURTAIN MATERIAL**

*"Allows maximum light penetration, while maintaining durable, long-lasting curtain material".*



*"Take Full Advantage of "Free" Natural Ventilation by installing Automated Controls on your existing Curtain!"*



## PRE-FAB Calf Nurseries



Improve Your Calf Raising Program with a Sturdy Built Calf Nursery



**Sales and Installation by Cedar Crest Equipment**

Contact us for FREE Equipment Guides on our complete line of Galvanized Dairy Equipment!



## CALF HOUSING SELECTION GUIDE

Our hutches are built to last, while saving you time and maintaining herd health. Our innovations are based on our own experiences raising calves and decades of experience in calf rearing.

### Climate Control

Whether you live in extreme heat or bitter cold, your particular climate will affect which features matter most to you and your calves' health. That's why Agri-Plastics offers hutches with right or left offset doors or full openings to accommodate varying climates.

### Built for Your Operation

At Agri-Plastics, we understand that calf housing is never "One Size Fits All." What works for a small dairy most likely will not work for a large operation, so we offer a variety of options and sizes to make sure you can find the best fit for your operation.



### HOUSING OPTIONS

Regardless of your facility's setup and calf needs, Agri-Plastics has the solutions to shelter your investment.



#### STARTER PEN

Set directly on the ground or use our optional Elevated or Movable Starter Pens.



#### FLEX-PEN

This innovative solution to calf housing allows calves to be housed individually or grouped together via the easily detachable center panel.

## Find the right Agri-Plastics product for your operation.



#### GROUP HUTCH

Ease your calves' transition from hutches to group housing by using our group hutches. Helps reduce calf stress.

#### CALF HUTCH

The Deluxe SSL Space Saver Calf Hutch works well for shorter periods of time or smaller calves. Facilitates airflow, comfort and cleanliness.

For standard growth periods of 6 to 8 weeks of age, turn to the Deluxe SL Standard Length Calf Hutch. Most popular for weaned calves up to 8 weeks. Choose between side or rear feeding options.

The Deluxe EXL Extra-Large Calf Hutch accommodates longer growth periods of 8 to 12 weeks. The rear of the hutch stays dryer and warmer on cool days, providing better protection from wind, rain and snow.



#### FLEX-HUTCH

Sturdy construction accommodates two or three calves; cleanup and maintenance are easy, economical and efficient.



Deluxe SL Calf Hutch



Deluxe SSL Space Saver Calf Hutch



Deluxe EXL Extra Large Calf Hutch



61 Elco Drive, Myerstown, PA 17067  
717.866.1888

1106 Ashville Rd, Quarryville, PA 17566  
717.529.2782

1120 Shimpstown Rd, Mercersburg, PA 17236  
717.660.0060



www.cedarcrestequipment.com





# Browndale Maneuver **Maverick** \*PO

Maneuver PP x EX-91 Impression x EX Windbrook x EX Goldwyn x EX Storm x EX 'Tab Maude'

## THE MAGIC OF MAUDE!

525H0152 Browndale Maneuver **MAVERICK**  
POLLED | A2/A2 | aAa: 243615

*Pedigree packed with high production and no-holes conformation  
Hails from the incredible transmitter -- Fradon Tab Maude*

Maverick's Dam:  
**Browndale Impression Marvel**  
(EX-91 2E 92-MS)

2-01 314d 22,734 4.0 908 3.3 739  
3-02 365d 31,041 4.3 1343 3.3 1008  
4-05 295d 29,881 3.9 1160 3.3 981  
5-05 proj. 305d 31,211 5.2 1627 3.3 1038



1-855-955-2100 | [sales@triplehilsires.com](mailto:sales@triplehilsires.com)

[Triplehilsires.com](http://Triplehilsires.com) | Follow us on Facebook 

*Exclusive Distributor for **Masterpiece Genetics***