

# FARM SHINE

We rise every week to cover farmers and agribusinesses

Farmshine • Volume 45, Number 28 • \$20 one year

Mailed the day before →

March 15, 2024



## Thank you Sen. Klobuchar of Minnesota

# Whole Milk for Healthy Kids Act gains a Senate cosponsor

By SHERRY BUNTING  
Special for Farmshine

EAST EARL, Pa. -- The Whole Milk for Healthy Kids Act, S. 1957, gained another cosponsor this week: Senator Amy Klobuchar, a Democrat from Minnesota, member of the Senate Agriculture Committee, and former candidate for President in the 2020 Democratic Primary.

Sen. Klobuchar's support for the Whole Milk for Healthy Kids Act is important as she serves as the chair of the Senate Rules Committee and the Senate Democratic Steering and

Outreach Committee as well as on the Commerce, Science and Transportation Committee and Joint Economic Committee.

The Whole Milk for Healthy Kids Act now has 17 sponsors in the U.S. Senate from 13 states, including 12 Republicans, four Democrats and one Independent. Among them are nine of the 23 Senate Agriculture Committee members, including the Nutrition Subcommittee's Chairman, John Fetterman (D-Pa.) and Ranking Member Mike Braun (R-Ind.).

The bill has been referred to the Senate Agriculture Committee, chaired by Sen. Debbie Stabenow (D-Mich.), who on

Dec. 14 stated her position on the Senate floor that this issue of whole milk in schools should be left up to the Dietary Guidelines Committee, not the United States Senate.

The trouble with this argument is that the five-year Dietary Guidelines cycles have ignored the science on milkfat. Nina Teicholz, author of the *Big Fat Surprise* and founder of Nutrition Coalition has exposed the bias in the subcommittee that looked at the saturated fat question in the 2020 DGA cycle. Four had ties to promotion of vegan diets.

It is refreshing to see the truly bipartisan support S. 1957 is garnering, but we need more to get it to the Senate floor for a vote.

When Congressman G.T. Thompson's House bill, H.R. 1147 went to the Education Committee for markup last June and ultimately to the House floor for an overwhelming 330 to 99 passage in December, a little over one-quarter of the full House (157) were signed on as cosponsors. To reach this level in the Senate, at least 8 more cosponsors are needed to get to 25 out of 100 Senators. It would be better yet to get one-third (33).

Another key would be to get more Ag Committee Senators on board and to get all 24 major dairy states uniformly represented (See map, page 13).

All Senators should be contacted by constituents interested in seeing children have the choice of whole and 2% milk at school meals. However, given the need to focus some effort on Ag Committee Senators, here is whom to contact from that Committee to request cosponsorship:

Senators Debbie Stabenow, chair (D-Mich.), John Boozman, ranking member (R-Ark.), Sherrod Brown (D-Ohio), Mitch McConnell (R-Ky.), John Hoeven (R-N.D.), Michael Bennett (D-Colo.), Tina Smith (D-Minn.), Richard Durbin (D-Ill.), Tommy Tuberville (R-Ala.), Cory Booker (D-N.J.), Ben Ray Lujan (D-N.M.), Raphael Warnock (D-Ga.), John Thune (R-S.D.), Deb Fischer (R-Neb.).

Senate Ag Committee members to thank for their cosponsorship so far, are: Senator, physician and prime sponsor Roger Marshall (R-Kan.), original cosponsors Peter Welch (D-Vt.), Kirsten Gillibrand (D-N.Y.), John Fetterman (D-Pa.), Cindy Hyde-Smith (R-Miss.) and Chuck Grassley (R-Iowa). Additional Ag Committee Senators to thank for signing on are: Senators Amy Klobuchar (D-Minn.), Joni Ernst (R-Iowa), and Mike Braun (R-Ind.) For a complete list of Senate sponsors, and to follow

turn to page 13



# Volunteers do what is responsibly correct

Pictured at the 97 MILK meeting held in Plainfield, Cumberland County, Pa. on Tuesday, March 11, are from left to right: Jay Hoyt, Nelson Troutman, Jackie Behr, Dan Martin and Duane Spaulding. They are all 97 MILK volunteers and don't receive a penny for the hours and days

they spend promoting whole milk in one way or another. They don't have capital letters behind their names such as CEO, COO, CFO ... which in the wider circles of the dairy business command 7-figure salaries (or nearly so) plus exorbitant expenses and perks. These people, along with

many other like-minded volunteers for 97 MILK, are a team serving several states in the Northeast and beyond. They bring true facts and figures to the public in person as well as through social media and free hand-outs, including

turn to page 2

## PERIODICAL • DO NOT DELAY

Classified advertising .....	19	Market Moos .....	8
DHIA reports .....	14-17	Maryland Dairy Shrine .....	7
Editorial .....	4	Ohio Jersey news .....	9
Emergency urgency .....	3	PHA show invitation .....	2
Letter to the editor .....	12	PJHA Dairy Bowl finals .....	23

*"Farmshine is a breath of fresh air. Sherry Bunting's honest portrayals of the facts are much appreciated."*  
 S.S. Pennsylvania



**It's time. Don't wait.**  
 Send in your subscription request today and take a deep breath of dairy news.



**Two Years \$38 • One Year \$20**

Name: \_\_\_\_\_  
 Address: \_\_\_\_\_  
 Town: \_\_\_\_\_ State: \_\_\_\_\_ Zip: \_\_\_\_\_  
 Phone or e-mail: \_\_\_\_\_ New / Renewal (Circle one)

Mail with payment to FARM SHINE, 342 E. Main St., Ste. 201, Leola, PA 17540

## PHA invites show entries

STATE COLLEGE, Pa. — The Pennsylvania Holstein Spring Show will be held on Thursday, April 25, starting at 9 a.m. at the Grange Fairgrounds in Centre Hall. Kevin Doebriner of Ohio will be placing all entries.

Early check-in of entries through the *Showman* app starts on Monday, March 25, for \$25 per entry. Latest entry is by noon on Wednesday, April 24, for \$100 per animal. All animals must be on site by noon on April 24; set-up at the fairgrounds is permissible after 9 a.m. on Monday, April 22nd.

A chicken BBQ meal sponsored by Purina Feeds and four Purina mills will be offered on Tuesday, April 23, at 7 p.m. for a contribution of \$5 per meal. Reservations are required by Friday, April 19, to Laura at (570) 560-0324.

A showmanship contest will be held on Wednesday, April 24, starting at 6 p.m.

## There is little margin for error today... so target the transitions!



**Transitioning dairy cattle to a trouble-free, productive, high quality lactation is more important than ever as dairies manage milk margin volatility and return on assets at today's higher cost and reduced supply of dairy replacements. With Udder Comfort™ in the fresh-start routine, udders come in soft, ready for milk volumes to reach genetic potential. We have the tools for doing pre- and/or post-fresh groups in parlors or pens.**

### Here's what herd managers tell us:

**"Over a 60-day period, we used the Udder Comfort Backpack Sprayer to apply Udder Comfort in closeup heifer pens. They got it daily for one week, and it was the first time every heifer calved in clean (per CMT) in over three months of muddy conditions."**  
 — 1000 cows, Minn.

**"I can't believe anyone is not doing this! More milk, better quality, faster milking, reduced fetching. We love this product and the Backpack, enabling us to spray udders daily in the closeup pen."**  
 — 340 cows, 5 robots, Minn.

**"Udder Comfort gets udders softer faster for more milk. We saw 3 to 4 lbs more milk at 14 DIM, reduced SCCs and better first-lactation performance in our 2-year-olds."** — Indiana heifer grower calving-in over 250 2-year-olds monthly

**"Works like a charm! Routine use in fresh groups is convenient and cost-effective."**  
 — 8000 cows, N.M

**"With fresh cows, we see a lot more udder texture at 14 DIM as edema is pulled out. Our fresh cows feel better, up moving around more. They eat. They drink. They make more milk and higher quality milk."** — 750 cows, Iowa

**"We had zero mastitis in groups receiving pre-fresh applications of Udder Comfort vs. 10% treated in groups that did not. We observed less irritation and achieved our best milk quality yet."** — 700 cows, Pa.

## UDDER COMFORT™

**Quality Udders Make Quality Milk**

**Her Comfort is Our Passion!**

**Softer udders ⇒ Faster milking  
 Better quality ⇒ MORE MILK**

**1.888.773.7153  
 uddercomfort.com**



Helping reach their potential since 1998!



For external application to the udder only, after milking, as an essential component of udder management. Wash and dry teats thoroughly before milking.

## Volunteers — from page 1

whole milk. And it should be emphatically noted that this all-volunteer group is providing information that USDA and Dairy Management, Inc. (DMI) refuse to accept, promote and distribute. Simply: True Facts about Whole Milk. These people are responsibly correct; not politically correct. They do what is right; not what is USDA-approved, demanded and deceitful. It is thanks to 97 MILK, at least in part (We also wish to give credit to Allied Milk Producers and Nina Teicholz, author of *The Big Fat Surprise*) that whole milk consumption has increased in recent years. It is no exaggeration at all that the 97 MILK movement does more good for dairy in a single day than USDA and DMI have done in the past 20 years. Sherry Bunting has been documenting their sinister plots for over six years. The most recent proof of DMI's detrimental policies appeared in an article on last week's front page, titled: *Removing Whole Milk from Schools Drove Rapid Decline in Fluid Milk Sales*, with the additional notation in red that the Dairy check-off played a huge role via GENYOUth.

Photo by Dieter Krieg



USPS 509450 ISSN 0745-7553

Published by Farmshine LLC  
 in Lancaster County, Pennsylvania.

**1-YR. SUBSCRIPTION - \$20.00  
 INTERNATIONAL SUBSCRIPTION - \$40.00**  
 Published every Friday except the week of Christmas

Dieter Krieg, Editor & Publisher  
 Melissa Johnson, Advertising Representative  
 Ashley Denlinger, Advertising Representative  
 Sue McCloskey, Secretary  
 Douglas Denlinger, Production Manager

Send subscriptions, news & advertising to:  
 FARM SHINE  
 342 E. Main St., Suite 201, Leola, Pa. 17540  
 Phone 717-656-8050 | Fax 717-656-8188  
 news@farmshine.net | ads@farmshine.net

Periodicals postage paid at Lancaster, PA  
 and at additional mailing offices.

**POSTMASTER: Send Address Corrections To:**  
 FARM SHINE  
 342 E. Main St., Suite 201  
 Leola, Pa. 17540

Copyright © 2023. Printed in USA. All rights reserved. No part of this publication may be reproduced in any form without prior written permission by the publisher. Information gathered herein is from resources considered reliable. Accuracy, however, cannot be guaranteed. All printed material is intended for your information and reading enjoyment and is not meant to disrespect or harm any group or individuals. Ads appearing in this paper are not to be considered as an endorsement by Farmshine for products or services offered.

Farmshine's staff reserves the right to refuse any and all material, including articles and advertisements that they determine do not fit the objectives of Farmshine.

# ADC urges signatures to strengthen emergency request

Nearly five years of the 'average of' method has resulted in net losses to farmers of \$1.1 billion in Class I revenue alone

GREEN BAY, Wis. — American Dairy Coalition sent a letter to USDA Secretary Tom Vilsack and AMS Dairy Programs Administrator Dana Coale on Wednesday, March 13, urging USDA to grant the American Farm Bureau Federation's official request for an emergency decision to return the Class I skim price formula to the 'higher of.'

The AFBF request was read into the record on the last day of the Federal Milk Marketing Order hearing, Jan. 30, by Farm Bureau economist Danny Munch.

Nearly five years of the 'average of' method has resulted in net losses to farmers of \$1.1 billion in Class I revenue, alone, which is predicted to exceed \$1.6 billion by the end of 2024.

More than 30 state, regional and national dairy organizations, state farm bureaus, and cooperatives as well as nearly 200 individual dairy producers and allied industry service providers have signed on to the American Dairy Coalition letter along with ADC President Walt Moore, a Chester County, Pennsylvania dairy farmer. Signatories cover 33 states from coast to coast.

"This is an emergency," the letter to Vilsack states. "The 2022 Ag Census showed a staggering 40% drop in the number of U.S. dairy farms in five years. The move away from the 'higher of' is contributing to dairy margin losses and negatively impacting dairy farm families and the rural communities that rely on them. As a grassroots producer-led organization, American Dairy Coalition has been engaged in consensus-building on FMMO pricing. We and other undersigned organizations and farmers write in strong support of American Farm Bureau's request for an emergency decision to return the Class I mover to the 'higher of' formula as soon as possible."

While being cross-examined at the FMMO hearing, Munch testified that, "Farmers need a whisper of hope, to see that there will be a positive outcome coming soon, an optimistic change that is coming that fuels them. Do they see things getting better? Or are things going to stay the way they are?"

"The legislative change in the Class I formula was part of

the 2018 Farm Bill. It was not vetted through a hearing, so Congress included language to have a hearing and evaluation two years after implementation. Farmers waited four and a half years for a hearing to be set, five months for the proceedings to conclude, and it could be another 18 months before all of the post-hearing proceedings are completed," ADC CEO Laurie Fischer observes.

"As Farm Bureau pointed out in various testimony, there is overwhelming consensus for this change back to the 'higher of' among producers across the country," Fischer adds.

"(The change) was not revenue neutral as promised," the letter reports. "Losses were not only caused by food box purchases or black swan events, but rather by a formula that shifts risk from processors and creates new lopsided risk for farmers, where there is a 74-cent cap on the potential benefit of the formula, but no limit at all on the losses."

In his testimony during the FMMO hearing, ADC board member Bryan Henrichs, an Illinois dairy farmer, acknowledged appreciation for the USDA Pandemic Market Volatility Assistance Program payments that covered just a fraction of the 2021 losses, and he acknowledged other hearing proposals that attempt to 'adjust the adjuster' to eventually make up the Class I value losses — gradually and later.

However, he explained that disorderly marketing occurs when the 'average of' method puts Class I out of alignment with manufacturing classes, reducing pool revenues, benchmark minimum prices, and ultimately farm milk checks.

"The 'higher of' ensures that the dairy producer is compensated at the time of the sale instead of later by some other form of support. I know some dairy producers that needed that money at that time — not 12 to 18 months later. I know of some that are no longer in business when they received the (PMVAP) payments," Henrichs testified.

"Much has been made of higher net farm income in some of the past few years, but dairy farmers have not enjoyed this prosperity. 2022 was a highwater mark in milk prices, but feed and fuel costs were high as well, reducing farm margin



**SIGN LETTER**

recovery. 2023 was a tough year for dairy farm margins, and if we look at the cumulative erosion of margins from 2015 through 2023, the economic picture is bleak," the letter explains, adding that economists have recently pointed out Federal Order minimum prices are now "the whole deal" and "premiums are gone."

"We look forward to your consideration to grant the AFBF emergency request... to be that 'whisper of hope' that dairy farm families may see a future in the industry we love and have contributed to in the production of wholesome, nutritious, delicious milk and dairy products, as well as our stewardship of land and cattle resources, and of hope for a future for generations of dairy farmers, dairy consumers, and economically healthy rural communities," the American Dairy Coalition letter concludes.

Read the full letter with signatories at [https://qrco.de/READ\\_LETTER](https://qrco.de/READ_LETTER) or scan the **blue 'Read Letter' QR code**.

For those organizations and individuals that missed the opportunity and want to sign on to the American Dairy Coalition letter for a future re-send, go to <https://qrco.de/sign-letter> or scan the **red 'Sign Letter' QR code**.

To view excerpts from the recently concluded FMMO hearing, go to [https://www.youtube.com/watch?v=x\\_Lozzzx-QWo](https://www.youtube.com/watch?v=x_Lozzzx-QWo)

To read AFBF's letter entered into evidence on the last day of the FMMO hearing, go to [https://www.ams.usda.gov/sites/default/files/media/FMMO\\_AFBF\\_6.pdf](https://www.ams.usda.gov/sites/default/files/media/FMMO_AFBF_6.pdf)

**State, regional, national organizations and cooperatives as signatories:**

- American Dairy Coalition
- Arizona Dairy Producers Association
- Connecticut Farm Bureau
- Country Visions Cooperative, Wisconsin
- Dairy Producers of New Mexico
- Dairy Producers of Utah
- Idaho Dairyman's Association

turn to page 10



**READ LETTER**

# Prepare Now for Winter!

## Durable Ag Curtains

**Complete Curtain Systems**  
with all the components you'll need

- High Quality 16 oz. Vinyl Curtain Material
- Galvanized Bird Wire
- Keder Tubing & Drive Motors



**Available with:** Manual Gear Drives or Fully Automated to Control Your Curtains 24/7



**SHADY LANE**  
Curtains LLC  
Bird-in-Hand, PA  
(717) 690-2003



**CALL NOW**  
to Get In Our Schedule

**"The Nation's Industry Leader in Ag Curtains"**

# Politics either greases or rusts much in life

By **DIETER KRIEG**  
Farmshine Editor

thought came to mind: Much in life is either greased or rusted by politics. It's surely undeniably true about dairy.

As I was washing a delicious sandwich down with a nice, cold and tall glass of whole milk on a recent Wednesday, this

Sitting in on a PMMB meeting in Harrisburg close to 50 years ago, someone made the comment that there's more

politics in a quart of milk than there is in a fifth of whiskey.

While we're not really informed about political overreach in the booze department, we're aware that there was a time when alcoholic beverages were prohibited by law. It was known as Prohibition.

Prohibition is precisely where we are at with whole milk. Not for adults, but for children ... who would benefit the most from whole milk consumption. It's the most nearly perfect nourishment we've been provided by our Creator. Just recognizing that simple fact serves as enough proof for many of us. For those seeking "science-based" evidence, the latest research provides it. But like they say, you can lead a stubborn donkey to the water trough, but you can't make him drink.



Dieter Krieg

It's the same way with stubborn donkeys in Washington. (Plus a couple of stubborn elephants as well.) Truthful, up-to-date information about whole milk keeps being delivered. Arden Tewksbury personally delivered boxes and boxes of it for many years.

But by government decree in 2010, whole milk and 2% milk were banned in schools under the National School Lunch Program Act because of completely false evidence and misplaced concern that their consumption led to child obesity, high blood pressure and heart disease. Two years later, in 2012, all but skim milk were prohibited from entering school cafeterias.

President Trump attempted to re-introduce all choices of milk back into the nation's schools but only the 1% variety was approved by Congress. And so, the campaigning to correct a massive and destructive mistake goes on to this day, with Congressman Glenn 'GT' Thompson boldly spearheading the drive in Washington. The House overwhelmingly passed favorable legislation on December 13th with a vote of 330 Yes and 99 No. We owe 'GT' a huge THANK YOU.

Unfortunately, the Whole Milk for Healthy Kids Act has been stalled in the Senate ever since it was layed before the eyes of Senate Leader Debbie Stabenow of Michigan. Politics again.

Politics is always on the table at 2107 Wilson Boulevard, Suite 600, in Arlington, Va., just minutes from Capitol Hill. That address is home base for the dairy industry's self-proclaimed protector of dairy farmers' interests ... the National Milk Producers Federation (NMPF). "The voice of dairy farmers in our nation's capital" they say.

We're not at all convinced that this catchy phrase is true or deserved. Surely, we would not be facing the many challenges and huge losses of dairy farmers had those folks actually been speaking for the people who milk and feed the cows. Politics. Always politics.

We know who is getting the grease and who is getting the rust, don't we? One of those people traveling smoothly to and from Davos and Dubai (among other places) lives not too far east of Farmshine's office, and is given at least \$51,000 per year according to a report we've seen recently.

But never mind the money; it's an insignificant amount, compared to what the "top brass" at DMI is raking in. Question, instead, the purpose of the travel. Was she in Davos and Dubai to speak up for dairy or to offer cows as the "sacrificial lambs" of our day?

**It's in there ... and it's working!**

Keeps the microbes alive!

Capsule-In-A-Capsule™ packaging system

**Immune Function • Digestive Health • Appetite Support**

**RumenAider®** cattle capsule **At Calving**

- Off feed
- Veterinary care

**Gener-Cap™** calf capsule **At Birth**

- Transport
- Handling

Support when they need it!

Bio-Vet.com | 1-800-BIO-VET1

# WHAT'S NEXT?

While none of us knows for sure exactly what is in the future for the dairy industry, change is coming.

- (1) Will antibiotics be banned by consumer demand?
- (2) Will milk over 100k SCC be penalized?

**Be ready for whatever comes next: just call 920-650-1631.**

**Start today - 920.650.1631**  
[www.alphageneticsinc.com](http://www.alphageneticsinc.com)

CALL 202-224-3121 and tell your Senators to co-sponsor and vote YES to S1957 "WHOLE MILK FOR HEALTHY KIDS ACT"

**SUPPORT 97milk.com. They support you!**

**HAVE YOU CALLED YOUR TWO SENATORS YET?**  
GOOD NEWS 24-7-365. 1-605-477-2279

**DICK MEYER CO.**  
**DM**  
**CONCRETE GROOVING**

- Improve Livestock Traction in New & Existing Barns
- Better Drainage for Dry & Healthy Hooves

**CUSTOM CONCRETE GROOVING & SLOT CUTTING FOR ALLEY SCRAPERS**

1-800-228-5471 [www.DMsafetygrooving.com](http://www.DMsafetygrooving.com)



# OPEN HOUSE

## PLEASE JOIN US!

Skyline Dairy in Smithsburg, MD



**OUTSTANDING NEW ROBOTIC FACILITY**

**MARCH 28**  
10:00 A.M. - 3:00 P.M.



**At Skyline Dairy:**

- Lely Astronaut A5 robotic milking system
- Lely Vector automatic feeding system
- Lely Discovery 120 Collector mobile barn cleaner
- Lely Luna cow brush

Join Lely Center Mid-Atlantic and our event sponsors for an open house at Skyline Dairy in Smithsburg, MD on March 28, 2024, from 10:00 a.m. to 3:00 p.m.

At this exclusive, on-farm event you'll have the chance to see a Lely robotic dairy in action, as well as chat with producers about making the switch and the benefits they've seen as a result.

Lunch will be provided. Event address provided after registration. Don't miss this opportunity to see **The Future Of Dairy™** in person!



**RSVP By March 25**  
Scan to register or visit  
[www.lely.com/MidAtlanticEvent](http://www.lely.com/MidAtlanticEvent)  
Or Call 717-656-3307  
Secure your spot now!



- 1 Lely Vector (2 MFRs)
- 6 Lely Astronaut A5s
- 6 Lely Discover Collectors
- 6 Lely Luna Cow Brushes

**SPONSORED BY**



If you are interested in learning more about Lely Automation, contact us today!

100 Newport Road • Leola, PA 17540  
**717.656.3307**  
[www.LelyCenterMidAtlantic.com](http://www.LelyCenterMidAtlantic.com)



LelyCenterMidAtlantic

@LCMidAtlantic

# Auction Guide

**MARCH 16,** 10 a.m. Hastings Dairy & Creamery Dispersal, Burton, Ohio. Sale managed by KIKO Auctioneers.

**MARCH 16,** 11 a.m. Ashelman Farm Machinery Dispersal, Orangeville, Pa. Sale managed by Fraley Auction Company.

**MARCH 16,** 11 a.m. Spring Premier All Breed Sale, Hosking Sales, New Berlin, N.Y. Sale managed by Hosking Sales.

**MARCH 19,** 9 a.m. Stoltzfus Farm Auction, Millville, Pa. Sale managed by Tim Weaver Auction Service.

**MARCH 20,** 10:30 a.m. Dairy Cow & Heifer Sale, New Holland Sales Stables, New Holland, Pa. Sale managed by New Holland Sales Stables.

**MARCH 21,** 10 a.m. Special Dairy Cow & Heifer Sale, Brubacker's Quality Dairy Sales, Shippensburg, Pa. Sale managed by Brubacker's Quality Dairy Sales.

**MARCH 22,** 7:30 a.m. Horse Consignment Sale and Special Work Horse Sale, Penns Valley Livestock, Centre Hall, Pa. Sale managed by Penns Valley Livestock.

**MARCH 22,** 11 a.m. Special Dairy Sale, Fisher's Quality Dairy Sales, Ronks, Pa. Sale managed by Fisher's Quality Dairy Sales.

**MARCH 23,** 8 a.m. Fraley's Spring Consignment Auction, Fraley Complex, Muncy, Pa. Sale managed by Fraley Auction Company.

**MARCH 23,** 10:30 a.m. DVU Green & Gold Spring Spectacular, Doylestown, Pa. Sale managed by Pa. Holstein Association.

**MARCH 26,** 9:30 a.m. Farm Machinery Auction, Bellefonte, Pa. Sale managed by Martin's Auction Service.

**MARCH 28,** 10:30 a.m. ND-Druvale Red & White or RC Reduction Sale, Brubacker's Quality Dairy Sales, Shippensburg, Pa. Sale managed by Brubacker's Quality Dairy Sales.

**APRIL 2,** 9:30 a.m. Zuck Registered Holsteins Complete Dispersal, Lebanon, Pa. Sale managed by Daniel Brandt.

**APRIL 6,** 11 a.m. Ovaltop Holsteins Herd Reduction Sale, Richfield Springs, N.Y. Sale managed by Hosking Sales.

**APRIL 12,** 9 a.m. Hall Family Dynasty Trust Real Estate Auction, Hughesville, Pa. Sale managed by Fraley Auction Company.

**APRIL 12,** 11 a.m. GTPI-Type Sale, Lancaster, Pa. Sale co-managed by Daniel Brandt Pedigrees & Marketing and Landis Marketing.

**APRIL 13,** 9 a.m. Spring Machinery Sale, Penns Valley Livestock, Centre Hall, Pa. Sale managed by Penns Valley Livestock.

**APRIL 18,** Annual Heifer Turn Out Sale, Brubacker's Quality Dairy Sales, Shippensburg, Pa. Sale managed by Brubacker's Quality Dairy Sales.

**APRIL 19,** 10 a.m. Best Of Luck-E, Hampshire, IL. Sale co-managed by Luck-E Holsteins and Fraley Auction Company.

**APRIL 20,** 10:30 a.m. Bradford County Calf & Heifer Sale, Troy, Pa. Sale managed by Bradford County Holstein Association.

**APRIL 26,** 7:30 a.m. Horse Consignment Sale and Special Driving Horse Sale, Penns Valley Livestock, Centre Hall, Pa. Sale managed by Penns Valley Livestock.

**MAY 25,** 11 a.m. Special Riding Horse Sale, Penns Valley Livestock, Centre Hall, Pa. Sale managed by Penns Valley Livestock.

**MAY 31,** 7:30 a.m. Horse Consignment Sale, Penns Valley Livestock, Centre Hall, Pa. Sale managed by Penns Valley Livestock.

**JULY 6,** PHA Summer Sensation Sale & Picnic, Somerset, Pa. Sale managed by Pa. Holstein Association.

# Advertiser's Index

Agri-Trac.....17	Meyer, Dick Company .....4
Albright, Daniel .....19	Mid-Atlantic Triply Ceilings .....7
Alpha Genetics (Immu-Pro)....4	Morrissey Insurance .....13
Bargain Page.....12	Mueller .....8
Beiler Industries.....20	Nelson & Sons Concrete Grv.17
Beitzel Spraying.....23	New Holland Sales Stables...19
Bio-Vet .....4	Nicholas Meat .....15
Brandt, Daniel Pedigrees.....19	Oregon Water Conditioning.13
Brubacker's Dairy Sales .....21	Pa. Holstein Association .....20
Brubaker, Rufus Refrigeratn..13	Penns Valley Livestock.....20
DHIA Pages.....14-17	Petersheim's Cow Mattress.....9
Ephrata Agway .....8	Power Systems Electric .....12
Fertrell .....12	Precast Systems .....20
Fisher & Thompson.....5,11	Premier Select Sires .....23
Fisher, Eli Construction.....13	Rissler, E. Manufacturing .....12
Fisher's Quality Dairy Sales .19	Rissler, I.H. Manufacturing .....7
Gehm, L.R. ....7	Select Sire Members Coop...10
Horizon Farm Credit .....15	Shady Lane Curtains.....20
Horst Grain Roasting .....20	Sollenberger Silos.....3
Hosking Sales.....23	Sturdy Built Manufacturing.....7
JBS .....6	Triple Hil Sires .....24
JBZ Dairy Advantage .....9	Triple M Farms .....20
Keystone Concrete Products...6	Udder Comfort .....2
Lira Gold .....17	Weaver, Tim Auctioneer .....22
Luck-E Holsteins.....16	Willow Road Silo Doors.....20
Martin's Roofing.....23	Zimmermans Glass Storage .20
Martin, Victor .....22	

## Tune in anytime; 24/7/365

MADISON, Wis. — *The Dairy Show*, World Dairy Expo's podcast, is available on Amazon Music, Apple Podcasts, Google Podcasts, iHeart Radio, Spotify and at [worlddairyexpo.com](http://worlddairyexpo.com).

New episodes of *The Dairy Show* are released on the second and fourth Tuesday of each month. Expo's podcast features a new guest on every episode discussing topics related to the global dairy industry.

"As the digital meeting place of the global dairy industry, Expo's podcast gives listeners a taste of Expo year-round," shares Katie Schmitt, host of *The Dairy Show*. "The Dairy Show focuses on a variety of topics ranging from cows to the colored shavings to cutting-edge technology while introducing different guests to provide unique perspectives."

Listeners span the globe, representing over 110 countries, all 50 U.S. states, and 12 Canadian provinces and territories. Some of *The Dairy Show's* most popular episodes include "Judging on the Colored Shavings", "Fitting and Grooming Dairy Cattle", "Just Talking Cows" and interviews with Expo Recognition Award winners.

# Dairyman's Datebook

**MARCH 19,** Lancaster County Holstein Association tour to Centre and Mifflin counties. Reservations required. RSVP ASAP to Delton Good at 223-264-6246

**MARCH 22,** 7 p.m. Maryland Holstein banquet at the fire hall, 101 High Street, New Windsor, with social hour preceding dinner.

**APRIL 13,** 9:30 a.m. Maryland Holstein Spring Show, Howard County Fairgrounds, off of I-70,

2210 Fairgrounds Road, West Friendship.

**APRIL 25,** 9 a.m. Pennsylvania Holstein Spring Show, Grange Fairgrounds, Centre Hall, Pa.

**APRIL 26-27,** Pennsylvania Ayrshire Convention, Shippensburg, Pa.

**JUNE 18-21** National Ayrshire Convention, Comfort Inn & Suites, 840 Sean Drive, Fremont, Ohio.

## Comprehensive approach needed for FMMO reform

ARLINGTON, Va. — Its Federal Milk Marketing Order (FMMO) hearing now concluded, USDA is now considering more than 12,000 pages of testimony as it formulates its plan for FMMO modernization. NMPF is still doing what it can to ensure that proposal best reflects the interest of dairy farmers and their cooperatives, two NMPF economists said in a Dairy Defined podcast.

The key to successful modernization is a comprehensive approach that addresses the complexity of federal orders in a way that respects the entire dairy industry while keeping in mind that orders most fundamentally must work for farmers, affirmed Dr. Peter Vitaliano, vice president for Economic Policy and Market Research, and Stephen Cain, senior director for Economic Research and Analysis at NMPF.

"What separates National Milk's proposals from processor groups is more of our holistic approach," Cain said. "You can't look at the federal order system having not been updated in 20 years and not address all facets of the industry, right? You can't say in good faith that Class I differentials need to be updated because costs have gone up without also conceding the fact that make allowances need to go up for the same reason. So we took that holistic approach. That is going to help move the industry forward together."

Cain and Vitaliano also discuss USDA's decision-making timeline, and why July could be the key moment for FMMO modernization. The full podcast is on Apple Podcasts, Spotify and Google Podcasts.

Keystone Concrete Products, Inc.  
477 E. Farmersville Rd.  
New Holland, Pa. 17557



(717) 355-2361 - corporate office  
(717) 355-9548 - fax  
[keystoneconcreteproducts.com](http://keystoneconcreteproducts.com)

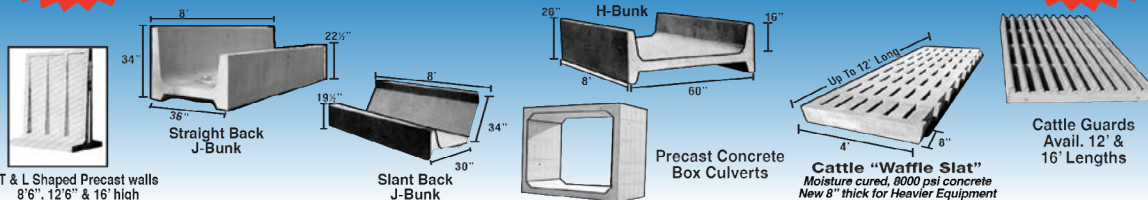
**NEED THAT BUNKER? CALL ASAP TO RESERVE YOUR WALLS!!!**



Secure Cover Dealer

Financing Available

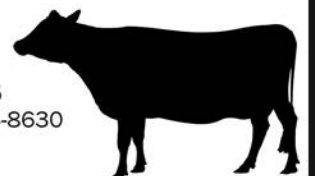
Agricultural Pre-cast Products Available:



**SELL YOUR CATTLE!**  
**PURCHASING CULL COWS**

**Same-Day Payment**  
**NO Fees • NO Commission**

For more information:  
Direct: (970) 506-8215  
Duff George: (717) 594-8630



Livestock Buying Stations are OPEN:

7195 Molly Pitcher Hwy Greencastle, PA 17225  
Monday & Wednesday 9 a.m. - 2:30 p.m.

503 School Rd Denver, PA 17517  
Tuesday & Thursday 9 a.m. - 2:30 p.m.

Contact Doug Musser: (267) 371-9824

**(JBS)** Learn more about our brands at [jbsfoodsgroup.com](http://jbsfoodsgroup.com)

249 Allentown Rd | Souderton, Pennsylvania 18964 USA

# Bovine geneticist H. Duane Norman propelled progress

WEST FRIENDSHIP, Md. — Pennsylvania native H. Duane Norman was awarded "Guest of Honor" Distinction at the Maryland Dairy Shrine's awards banquet on Saturday, Feb. 24. He was one of five individuals to receive the recognition, the others being Billy Heath, Sylvia Keller, Donald Keller and Eugene Long. The latter two joined the honor roll as Pioneers since they have passed.

Duane Norman grew up on Normandell Jersey Farms near Liberty, in Tioga County, Pa. He was the middle child of nine. He participated in church activities, 4-H and FFA, earning his FFA State Keystone Degree. He attended the National 4-H Congress in Chicago twice and was national achievement winner in the National 4-H Awards Program. He also attended National 4-H conferences in

Washington D.C. He showed the grand champion Jersey at the Pennsylvania Junior Dairy Show for three years.

A 1960 graduate of Liberty Joint High School, Duane went on to earn his B.S. degree in dairy science in 1964 and his master's degree in dairy cattle breeding in 1967. Both from Penn State. He was president of Campus 4-H and was on Penn State's dairy cattle judging team. He earned his Ph.D. in animal breeding from Cornell University in 1970 and was hired that same year as a research geneticist with USDA's Agriculture Research Service in Beltsville Md.



Duane Norman

He was research leader of the Animal Improvement Programs Laboratory for 24 years and has authored 170 journal articles and 400 other publications, including a book, and made 400 presentations to industry groups.

Throughout his career, Duane was recognized with numerous awards, including Distinguished Service Awards from the American Jersey Cattle Association (1990), USDA (1991), and the American Dairy Science Association (2011). He also received awards from the Polish Ministry of Agriculture and the World Jersey Cattle Bureau.

Duane served as president of National Dairy Shrine in 2000 and was their Guest of Honor in 2007. He was World Dairy Expo's Industry Person of the Year in 2011. Just one year into his retirement, he was asked to be interim administrator for the Council on Dairy Cattle Breeding (CDCB). He remains with CDCB as technical advisor.

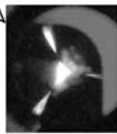
Duane and his wife Roslyn were 4-H organizational leaders for 10 years and he has been a 4-H volunteer for 40 years. He served as secretary (6 years), president (4 years), and director (21 years) for the Maryland Jersey Cattle Club. He is on the Maryland 4-H Foundation Board.

Duane and Roslyn Waring were married in 1974 and have three daughters - Kathryn, Jill, and Diane. They currently enjoy time with their nine grandchildren.

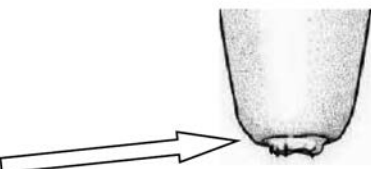
## Target practice with teat ends



How did milking go this morning with that target on the teat ends of your cows?



What target? How about your liner that remained open under the teat during the "rest" phase.



Yep, that liner was looking right at those teat ends just sucking and destroying. Perhaps it is time for pulsation and a liner that doesn't do that.

Trident@TridentPulsation.com

TridentPulsation™ System  
607-849-3880 607-352-0053



## Twin Vertical Auger TMR Feedcart



### Features include:

- 5 sizes from 45 to 110 cu.ft.
- Stainless Steel mixing chamber
- Stainless Steel auger flight
- 14" Carbide-tipped hay knives



Free brochure!  
1-800-436-5623

I.H. **RISSLER**  
— TMR MIXERS SINCE 1981

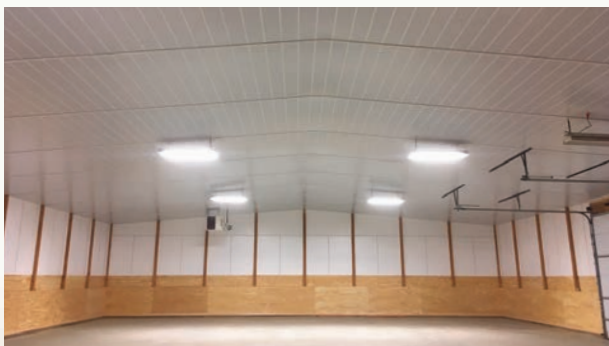
# Triply Ceilings

*in a freestall barn provides a bright, quiet, and moderated climate cows love!*



- Proven durability
- Any type of building
- Sound-reducing
- Reflects radiant energy
- Non-corrosive
- Effective bird control
- Washable, easy-to-clean
- Brighter ambient light

The alternative to conventional ceilings; at a fraction of the cost.



**For Agricultural - Industrial - Storage Garages - Shops - Steel Buildings, etc.**



ceilings@midatlantic.biz

**717-933-1316**



**Sturdy Built**  
Manufacturing, LLC

**GALVANIZED**

## Signature Series Headlocks

### Functionality, Flexibility & Longevity

- Wide open design
- Precise mechanism
- Adjustable head width
- Cow, heifer and calf sizes
- Automatic down-cow release is standard
- Poly cushioned, quieter everyday operation
- Heavy duty galvanized construction, will withstand years of feed bunk stress



### Improve Your Feedbunk Management!

Call 866-543-5116

sales@sturdybuiltmfg.net  
260 S. Muddy Creek Rd. Denver, PA 17517



Request a FREE Feedbunk Equipment Guide!

**Final ESG climate reporting rule takes Scope 3 off the table, for now; Commissioner: 'roadmap for abuse'**

The Securities and Exchange Commission (SEC) voted 3-2 on March 6 to approve the final rule on ESG climate disclosures, eliminating Scope 3 greenhouse gas (GHG) emissions from the reporting requirements.

The good news for farmers is that mandatory Scope 3 is off the table -- for now, except in California. The final rule also dialed-back some of the reporting requirements for Scopes 1 and 2.



# Milk Market Moos

by Sherry Bunting  
agrite2011@gmail.com



Scope 1 emissions are what a company directly controls. Scope 2 are the indirect emissions of a company from its purchased energy. Scope 3 encompasses the indirect upstream and downstream supply chain GHG emissions.

Despite the dial-back of Scopes 1 and 2 and the

elimination of the Scope 3 requirement, the SEC final rule is nearly 1000 pages long and sets a huge precedent, that even the Commissioner called "a roadmap for abuse" in his dissenting statement.

**Milk futures mixed, Class III avg gains nickel, Class IV loses nickel**

Milk futures split tracks this week with Class III contracts gaining a dime in some months, and Class IV mostly losing a dime. Current month contract for March was firm for both, and April was up 20 cents for both. The average for the next 12 months of futures contracts March 2024 through February 2025 saw Class III average a nickel higher than the average last week at \$17.65, while the 12-month average for Class IV contracts lost a nickel at \$20.31. Despite these moves, the divergence of Class IV over III remains \$2.50 to \$3.75 in every month through yearend.

**What's down with cheese?**

Cheese futures were up, Class III milk futures gained in the front months, but the daily spot market call -- which is looked at for pricing the cheese that gets surveyed to plug into the FMMO protein price and Class III price -- went the complete and puzzling opposite direction -- bigtime. Barrel cheese markets saw the bottom fall out on a heavier volume of sales, plunging 21 cents per pound to \$1.42/lb on Tues., March 12 with 12 loads trading, then gained back a penny Wednesday at \$1.43/lb with a single load trading.

The 40 lb block Cheddar market also lost ground, pegged at \$1.4350/lb Wednesday, 6 cents lower than a week ago, zero trades Tuesday and Wednesday, but 4 loads moved Monday at \$1.46 before the drop. The dry whey spot price gained back 2 of the 3 pennies lost last week, pegged at \$1.43/lb Wed., March 13 on bids with no offers and no trades all week.

On the Class IV side, Butter futures were mixed, and the spot butter price on the CME daily market came into the week slower and lower, but gained most of the loss back Wed., March 13 when 3 loads finally traded. Pegged at \$2.84/lb, the spot price was a penny short of a week ago.

Grade A nonfat dry milk gained back all of last week's loss, pegged Wed., March 13 at \$1.1625/lb, up 2 1/4 cents from the previous Wednesday with a single load trading. NFDN futures were higher across the board.

**Northeast Market Admin. approves Land O'Lakes request to pool dumped milk Mar. 15-Apr. 15**

The Northeast Market Administrator for Federal Milk Marketing Order 1 has approved pool handler Land O'Lakes, Inc. (LOL) request for temporary authorization allowing pool handlers to dump surplus milk at a farm or non-plant loca-

tion, with said milk keeping its pooled producer milk status from March 15 to April 15, 2024, according to a statement available at the FMMO 1 Market Administrator's website.

LOL cited a large customer in the region that has informed suppliers of plant closure for an extended period of time when milk supplies normally increase seasonally. The request cites the potential for impact to not only LOL but other dairy cooperatives in the area as well. Pool handlers Agri-Mark, DFA, Maryland and Virginia, and Upstate Niagara submitted remarks either in support of, or did not oppose, LOL's request.

Handlers and/or producers that utilize this temporary policy must have been pooled on the Northeast Order for all their commercially marketed production for the months of July through November 2023. The milk must be picked up at the farm, measured and sampled for payment, and will be priced at the dumping location.

Dumped milk is priced at the lowest Class price in the pool, which would be Class III -- the market dog at this time. Given that even with stricter pooling / depooling rules in the Northeast, we will likely see depooling of Class II and IV milk in these months due to the extremely wide and persistent Class IV over III divergence that has been with us for months and is expected to continue into the foreseeable future. If II and IV depool and additional milk is dumped as the lowest Class III and Class I is pulled down by the 'average of', we could see more than the normal impact on blend price from such dump-and-pool authorizations over March and April.

**Walmart to build 3rd fluid milk bottling plant, this time in Texas**

Not five months after Walmart announced in Oct. 2023 a site in Valdosta, Georgia to build its second fluid milk processing plant, the supermarket behemoth announced March 7 the selection of a site in Robinson, Texas to build its third. The Georgia plant is expected to open in 2025, the Texas plant is 2026. The back-to-back announcements have some in the industry wondering if a Northeast site is on a drawing board.

The planned new facility in Texas, will process a variety of milk, including Gallon, Half Gallon, Whole, 2%, 1%, Skim, and 1% Chocolate Milk for Walmart's Great Value and Sam's Club's Member's Mark brands for 750 stores and clubs throughout the South including Texas, Oklahoma, Louisiana and parts of Arkansas and Mississippi. The Georgia plant will do the same to serve more than 750 Walmart stores and Sam's Clubs in the Southeast.

These announcements come five to six years after Walmart opened its first fluid milk bottling plant in Fort Wayne, Indiana in 2018, which company officials said at the time serves Walmart stores and Sam's Clubs in Indiana, Illinois, Michigan, Ohio and Kentucky.

The retailer is currently building a case-ready beef facility in Olathe, Kan. after opening its first beef facility in Thomasville, Ga. in 2020 -- as it executes its strategy to control more of its own fresh food supply.

**MUELLER DAIRY FARM EQUIPMENT**

**The Digital E-Star® ... has everyone's attention!**

- Automatic Capacity Control
- Electronic Valve Control
- No Adjustments Needed
- HiPerForm® Technology

Like us on Facebook! [www.Facebook.com/MuellerMilk](http://www.Facebook.com/MuellerMilk)

**Fisher & Thompson, Inc.**

Leola • 717-656-3307      Roaring Spring • 814-224-0070  
 Belleville • 717-935-7422      Somerset • 814-444-8502  
 Troy • 570-297-2012      Bethel • 717-656-3307

**Priest's Refrigeration**

Greencastle  
717-643-1057

**Rufus Brubaker Refrigeration**

Manheim  
866-665-3525

**Regional Manager**

Vic Leininger      PA, NY, MD, DE, NJ      Quarryville, PA      417-872-5715

**SUPER SHAVINGS SAVINGS**

**Premium Fine Flake Pine Shavings**

Opens to 6 Cu. Ft. (Dust Free) ..... **\$6<sup>00</sup>** /bale  
 Skid Lots Only (59 bales per skid)

**Dairy farmers no. 1 choice in bedding**

**Delivery Available • Wholesale half and full loads**

**Premium Medium Flake Pine Shavings**

2.5 Cu. Ft. (Expands to 10.5 Cu. Ft.) ..... **\$6<sup>30</sup>**

Skid Lots Price (650 Cu. Ft. per skid) ..... **\$6<sup>00</sup>** /bale



1731 W. Main St., Ephrata, PA 17522  
 EphrataAgway.com  
 717-733-6593 • 800-379-0568  
 Mon.-Thur. 7:30-6 • Fri. 7:30-7 • Sat. 7:30-4



# Ohio Jersey breeders' convention and sale reported

By **SUSAN MYKRANTZ**  
Ohio Correspondent

URBANA, Ohio — Woodruff's VIP Delilah sold for \$12,250 to top the fourth Woodruff heifer sale. The September 2023 daughter of River Valley Venus VIP-ET out of DKG Virtuoso Duchess was purchased by Morgan Jerseys of Urbana. The sale was held following the annual meeting of the Ohio Jersey Breeders' Association.

Todd Woodruff told the group he started his heifer sale four years ago as a way to keep his inventory in control. He said they get about 30 heifers per year, but they only have so much barn space to hold their heifers and dry cows, so selling everything born on the farm since the previous sale has worked well for him.

By selling everything, buyers know they aren't holding anything back, according to Woodruff. But there are some older bloodlines his Dad, Max, developed that they want to retain in the herd, so Woodruff said he will occasionally buy back a heifer that went through the sale if the owner wants to sell the animal back once it freshens.

"We are trying to take small dairy farms and figure out a way to make it lucrative," he said. "We want to make it profitable. We want to see genetics leaving here make everyone money."

In other news, John Lemmermen, president of the Ohio Jersey Breeders' Association, told members attending the meeting that the board approved the sale of the office building by auction. The building was cleaned out and the contents were sold online.

Erica Davis reported on upcoming shows this year, noting that the 2024 Spring Dairy Expo will be May 27-30 and follow a schedule similar to 2023. All Breed showmanship will be held on Wednesday afternoon, following the ADA pizza party.

The Buckeye Classic will be held Thursday morning beginning at 11. The Jerseys will show Saturday morning, followed by the selection of the supreme champions. Matt Mitchell will judge the Jerseys. Jerseys will be on the grounds during the second session of the Ohio State Fair. Showmanship will be August 1. The junior show will be July 31, with Donna Greiwe as the judge. The open show will be August 1 and 2, with heifers showing on August 1 and cows on August 2. Pat Conroy will be the judge.

John Lemmermen gave an update on activities at Ohio State. The dairy herd has been moved to Wooster while the MALC facility is being built. Plans for the dairy facility should be ap-

proved by the end of the month before regulations for the City of Columbus change. The new facility will include two robotic units, a robotic feed pusher, and manure handling system.

Jason Robinson, area representative with U.S. Jersey, reported that 2023 was the fifth highest year in registrations, with Ohio ranking 8th in the number of registrations for the year. The average production for 2023 was 20,710M, 1038F and 738P. Over 227,000 Jersey tags were distributed in 2023.

The AJCA is looking at a proposed redistricting plan to divide the country into three regions with four directors in each region. The plan will be voted on at the annual meeting in June, hosted by New England Jersey breeders.

Alisha Morgan, junior advisor reported on the junior activities. She thanked Meredith Hageman for reigning as the 2023 Ohio Jersey Queen. Jade Laux was crowned as the 2024 Ohio Jersey Queen. They are planning a raffle during Spring Dairy

Expo. Prizes for first place animals at Spring Dairy Expo will be cutting boards.

Erin Brown gave an update on projects by the American Dairy Association (ADA), including an E-commerce project with Krogers, encouraging customers to add dairy to their shopping list. The result was \$4.9 million in sales and \$800,000 sales in lactose free products, she reported. Further, ADA is working with food service and restaurant chains such as Raisin' Caine, and Taco Bell to increase the use of cheese in their products. They are developing a shelf-stable dairy creamer and working with McDonalds which has seen a 3 percent increase in sales. ADA has also entered into a partnership with the Mayo Clinic to research the value of whole fat dairy products in client's diets. The clinic's website includes a tab where health professionals can go for information. Brown said this year, 2800 schools are participating in the ADA's Adopt-A-Cow program.

## Pasture Mat®

### The Only System With Proven Durability



**Don't buy cheap copies get the original Pasture Mat**

*Tie Stalls*



*Free Stalls*



**Petersheim's Cow Mattresses**  
"Cow Comfort is Our Specialty"  
2205D Old Phila. Pike, Lancaster, PA 17602

**CALL 717-786-2918**  
[www.realcowcomfort.com](http://www.realcowcomfort.com)  
US Pat.#Des.421.321 US 2087464 653195 Europe 0684760 069423746.9



[www.jbz dairy.com](http://www.jbz dairy.com)

Call JBZ Dairy for all of your

# MILKING EQUIPMENT REPAIRS

We service ALL major milking equipment brands. Specializing in DeLaval parlors, robotic milking systems and dairy supplies.

With over 90 years of experience,  
JBZ Dairy is a name you can trust!

Call Us Today!  
**717-354-8030**

 **INDEPENDENT AUTHORIZED DEALERSHIP**

SERVING EASTERN PENNSYLVANIA

# Signatures

from page 3

Illinois Milk Producers Association  
 Indiana Dairy Producers  
 Iowa State Dairy Producers Association  
 Kentucky Dairy Development Council  
 Kentucky Farm Bureau  
 Michigan Farm Bureau  
 Milk Producers Council of California  
 Missouri Farm Bureau  
 Nevada Farm Bureau Federation  
 Northeast Dairy Producers Assn. (N.Y.)  
 Oklahoma Farm Bureau  
 Oregon Dairy Farmers Association  
 Pennsylvania Dairymen's Association

Pennsylvania Farm Bureau  
 Prairie Farms Dairy Cooperative  
 Progressive Agriculture Organization  
 Rhode Island Farm Bureau  
 Tennessee Dairy Producers Association  
 Tennessee Farm Bureau Federation  
 Texas Association of Dairy Producers  
 Venture Dairy Cooperative, Wisconsin  
 Vermont Dairy Producers Alliance  
 Washington State Dairy Federation  
 Western Iowa Dairy Alliance  
 Western States Dairy Producers Assn.  
 Wisconsin Dairy Alliance

# Animal care workshops slated

HARRISBURG, Pa. — Dairy producers and their employees are invited to one of four animal care workshops that will be held on dairy farms across the state in April. Hosted by the Center for Dairy Excellence, Pennsylvania Beef Council and the Professional Dairy Managers of Pennsylvania (PDMP), the free workshops will focus on hands-on skill-building to help dairy producers meet National FARM compliance. A certificate will be provided at the conclusion of each workshop to show dairy producers' commitment to National FARM and animal care.

A Spanish interpreter will be present at each event, making the workshops ideal for both English and Spanish-speaking employees. Lunch

will be provided at each workshop as well.

"Thanks to the large number of dairy farm teams who have attended these animal care workshops over the last two years, we are looking forward to partnering with PDMP and the Pennsylvania Beef Council to offer another series this spring. These workshops qualify as National FARM training, so they are a great opportunity to boost your skills in key animal welfare areas and develop safe and effective protocols for your operation," said Allen Hess, customer relations specialist at the Center for Dairy Excellence.

Four workshops will be held on dairy farms across Pennsylvania from 9 a.m. to 3 p.m. on the following dates:

- Tuesday, April 2 — Canon Dairy, Mercer County.
- Tuesday, April 9 — Dry Creek Farm, Blair County.
- Tuesday, April 16 — Dotterer Dairy, Clinton County.
- Tuesday, April 23 — Zahncroft Dairy, Berks County.

During each workshop, attendees will rotate through multiple stations and gain training in several key animal welfare areas, including: calf care, lameness and locomotion, euthanasia and fitness to transport, stockmanship and more.

"Last year I sent our farm's main animal handling employees to this workshop focused on training for the FARM program, or Farmers Assuring Responsible Management. They thanked me for sending them. They came back knowing more about biosecurity, animal welfare and handling, and lots of on-farm activities," said Amy Brickner of Stover Farms in Cumberland County.

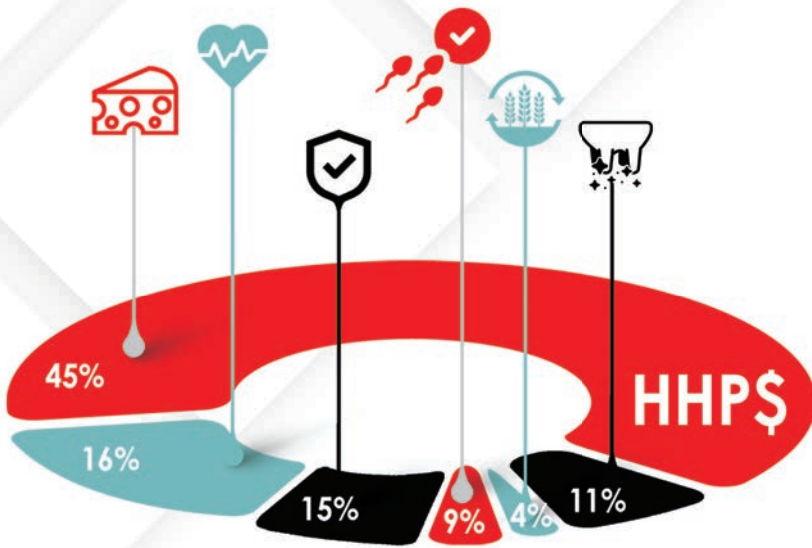
To register for one of the free animal care workshops, call 717-346-0849 or visit [www.centerfordairyexcellence.org/animal-care](http://www.centerfordairyexcellence.org/animal-care). Please include the names of employees who will be attending from your operation.

Sponsorship opportunities are also available. For more information about the events, contact Allen Hess at [ahess@centerfordairyexcellence.org](mailto:ahess@centerfordairyexcellence.org) or call 717-346-0849.

## Ice cream!

"The Pennsylvania Ice Cream Trail is an opportunity to connect your products to enthusiastic ice cream lovers and convert them into loyal customers," says Pennsylvania Agriculture Secretary Russell Redding. "The trail broadens your business exposure to a wider audience throughout the season, bringing in those who are eager not just for great ice cream, but for a connection to the families, farms, and businesses who produce it. We hope you'll grab this opportunity to put the PA Preferred® brand and PA Culinary Trails to work as an asset for your business."

To participate in the 2024 Ice Cream Trail or learn more about the program, contact Emily Barge by March 29. Email her at [ebarge@centerfordairyexcellence.org](mailto:ebarge@centerfordairyexcellence.org) or call 717-788-0300. For more information about the trail, visit [www.visitpa.com/trip/scooped-ice-cream-trail](http://www.visitpa.com/trip/scooped-ice-cream-trail).



## FORMULATED TO SUPPORT YOUR SUSTAINABILITY GOALS

Genetic progress equates to greater environmental sustainability.

Select Sires' Herd Health Profit Dollars® (HHP\$®) is the premier index to enhance your dairy's sustainability. It is designed to create healthier, longer-living cows that reduce your herd turnover while lowering your carbon footprint.

LEADING YOUNG SIRES	HHP\$
14H016673 ENDEAR	1,332
7H016485 SUNDANCE*	1,327
7H016276 SHEEPSTER*	1,325
250H016812 CRIMSON*	1,284
7H016148 BAMBAM	1,281
250H016715 MCCLUNE*	1,277
250H016741 HARDIN*	1,274
7H016607 SMOKE SIGNAL*	1,272
7H016984 HOBART	1,267
7H015977 HAYK	1,265

\*Identifies NxGEN Sires. 12/23 CDCB/HA Genomic Evaluations. ©NxGEN, HHP\$, Your Success Our Passion, and the Select Sires logo are registered trademarks of Select Sires Inc., Plain City, OH. BAMBAM and MCCLUNE are carriers for Early Onset Muscle Weakness Syndrome. Weightings reflect the Holstein HHP\$ formula as of December 2023. Sources: Mostert et al., 2019; Briggs, 2022; Cabrera & Cordoba, 2022. 7 = Select Sires, 14= Accelerated Genetics, 250 = GenerVations

### BOOST COMPONENTS

More pounds of CFP from fewer cows is key to improving sustainability and also equates to more lifetime profit per cow.

### LIVE LONGER, LESS HEALTH EVENTS, EASY CALVINGS

Reduce culling, raise fewer replacements and spend less time and money treating sick cows.

### RESIST MASTITIS AND IMPROVE MILK QUALITY

Cows with clinical mastitis have 6% higher carbon footprint per unit of milk.

### BREED BACK QUICKLY

Improving pregnancy rate from 19% to 25% reduces total herd methane by 10% and increases profit \$49 per cow per year.

### FEED EFFICIENT

Moderate body size and improved feed efficiency means less food and water per pound of milk.

### CONFORMATION

Leverage conformation traits to create balanced and robust cows that are easy to milk, easy to manage and built to last.



**YOUR SUCCESS** *Our Passion.*

Select Sires Member Cooperative  
 Phone: (614) 878-5333  
 Web: [www.cobaselect.com](http://www.cobaselect.com)

Premier Select Sires, Inc.  
 Phone: (800) 227-6417  
 Web: [www.premierselectsires.com](http://www.premierselectsires.com)



# MAXIMIZE YOUR MILK QUALITY

WITH OUR EXPERT TEAM!



Enhance your overall milk quality with the support of our specialized staff - our combined team effort ensures unmatched equipment sanitation and optimal udder health, positioning your dairy for success.

## What sets us apart?

Our buying power allows us to offer a top-quality product line at the most competitive pricing in the market!

We pride ourselves on the highest standards of cleaning, sanitizing and animal hygiene through personalized customer service - plus no-nonsense support regarding innovative technologies and specialty products.

**Reach out today and see how our team can help achieve your ultimate milk quality goals!**

**Our Belleville location is proud to offer an affordable, comprehensive cleaning & sanitation program, featuring top-tier products like:**

- ✓ Principal (chlorinated alkaline detergent)
- ✓ Envirocid Plus (highly concentrated red acid 1:10 use rate)
- ✓ Mandate Plus (acid sanitizer) **ECOLAB®**



[/fisherthompsoninc](https://www.facebook.com/fisherthompsoninc)

[www.FisherThompson.com](http://www.FisherThompson.com)

## YOUR PARTNER IN DAIRY SOLUTIONS!

Auburn, NY.....	315-252-9270	Rocky Mount, VA.....	540-489-5800
Batavia, NY.....	315-252-9270	Belleville, PA.....	717-935-7422
Clymer, NY.....	716-450-9967	Chambersburg, PA.....	717-352-7606
Conewango Valley, NY.....	716-358-9152	Roaring Spring, PA.....	814-224-0070
Mechanicville, NY.....	518-652-2383	Somerset, PA.....	814-444-8502
Harrisonburg, VA.....	540-867-3251	Troy, PA.....	570-297-2012

MAIN OFFICE

**LEOLA, PA**  
717-656-3307

# Last call for Brown Swiss consignments

FREDERICK, Md. — The Mid-Atlantic Brown Swiss Calf Sale turns 50 this year and is dedicated to the memory of Ronnie Heffner, a dear friend and driving force behind these years of successful sales.

The 50th anniversary sale will be held on Saturday, April 20, at the Frederick Fairgrounds, starting at 10:30 a.m.

Considered one of the most successful spring sales in the Brown Swiss arena, it is noted for consistently offering outstanding calves. Many have developed into national show quality animals, state and national Bellringers, All-Americans, and profitable additions to herds. Many success stories have come out of this sale with junior-purchased animals. Quality of pedigrees and top consignments have been the tradition for 50 years.

Brown Swiss breeders from across the region are invited to be a part of this fast approaching historic sale. Now is your chance to consign a heifer. Check those calf pens and pedi-

grees and see what you can offer.

The sale committee is accepting spring yearling age to anticipated spring heifer calves for consignments - so think March 2023 through March 2024. The committee is looking for a strong group of animals that combine the unique blend of production and type that anyone, from junior buyers of 4-H project animals, to the investment buyer, is looking for. This is a multi-level sale that offers something for everyone.

You are invited to be a part of this sale with a consignment or two. If you are interested in consigning, or want additional information about the sale, please contact one of the following:

- Cindy Warner - cell: 301-639-6887; bscow@comcast.net  
Mailing address: 7417 Round Hill Rd., Frederick, Md. 21702
- Jeff Hubbard - 301-401-5000; hubbard100865@gmail.com
- Jenna Lenhart - 814-931-3726; smithjenna12@gmail.com
- Emmy Heffner - 240-344-6399; eheffner@lswg.cpa

## LETTERS

### Dairy farmers under attack

Editor:

Dairy farmers are under attack by the National Milk Producers Federation. They're now working on a Dairy Environmental Sustainability Program, which is designed to lower greenhouse gas emissions from dairy cattle.

This program is the height of hypocrisy. According to the NMPF website, the U.S. dairy herd only produces 1.3% of the nation's greenhouse gas emissions while the transportation industry produces 28%. According to NMPF, if the U.S. dairy herd was somehow removed it would only lower greenhouse gas emissions by 0.7%.

If you are confused, you are not alone. The NMPF website contains many pages about their different programs, so it's easy to research their ideas.

As dairy farmers, we have survived the FARM program because we had to. Dairy product buyers demanded that we abide by these rules.

I am afraid that this Dairy Environmental Sustainability Program will add a very costly economic burden on already struggling dairy farmers. I urge each and every one of you to get ahead of this mess and tell your raw milk handler that we, the dairy producers, do not want this mandated on our dairy farm. The raw milk handler needs to make clear to the finished product buyer that they will not mandate this Dairy Environmental Sustainability Program on the dairy farms. The finished product buyer needs to go to the National Milk Producers Federation website so they can see for themselves the hypocrisy.

I am a concerned dairy farmer willing to help you with this effort!

Thomas L. Olson  
Black River Falls, Wis.  
715-284-2590



## Grazier's Choice

### FREE-CHOICE LIVESTOCK MINERALS

A superior free-choice supplement for all classes of livestock.

A unique blend of nutrients specifically designed for grazing livestock. Fortified with Thorvin kelp, Redmond salt, vitamin E, selenium, calcium, & phosphorus.



**PRODUCER OF NATURAL & ORGANIC FEED SUPPLEMENTS & FERTILIZERS**

**Contact Us to Request a Catalog!**  
The Fertrell Company • PO Box 265, Bainbridge, Pennsylvania 17502  
800-347-1566 • www.fertrell.com



## SPIRO MAX

### 14' to 30' Silos

10 X more Start-up torque than blower units in frozen conditions

Single lever retractable conveyor for silo filling convenience.

Order and pay by March 31 for 10% discount

**HIGH RISE HEXAPODS AVAILABLE**  
**Rissler Unloader LLC**  
**814-766-3168**

# BARGAINS YOU CAN'T BEAT!

## ATTENTION DAIRY FARMERS

*We Need Good Used Tanks • 100-8,000 gal. - Call Us*

• 180 Milkeeper	• 600 Mojonner	• 1000 Storage
• 210 SOLD PA	• 600 Mueller M	• 1250 Gal. Storage
• 210 Sunset A	• 600 SOLD PA OH	• 1250 Mueller OH
• 300 Delaval	• 600 Mueller OH	• 1350 Mueller OE
• 300 Sunset	• 625 Sunset	• 1500 Gal. Storage
• 400 Mojonner	• 700 Mueller M	• 1500 SOLD PA OH
• 400 Mueller M	• 735 Sunset	• 1500 Mueller OH
• 415 Sunset	• 800 Delaval	• 1600 Mueller OE
• 500 SOLD PA Ter	• 800 Mojonner	• 2000 Delaval
• 500 Mojonner	• 800 Mueller OH	• 2000 SOLD PA OE
• 545 Sunset	• 1000 Mueller M	• 2000 Mueller OH
• 600 Delaval	• 1000 Mueller OH	• 3000 Surge

**Tube-coolers  
HEAT EXCHANGERS  
300-6000 Gal. Storage Tanks  
Installation, Sales & Service**

## SHENK'S

505 E. Woods Drive, Lititz, PA 17543 • Sales 717-626-1151

### PolyDome Bulk Bins



PolyDome Bulk Bins are the perfect choice for handling high moisture corn, soybeans, and other granular materials. They are made of high density polyethylene which will never rust or corrode. PolyDome Bulk Bins will always remain clean and attractive. 0.9 ton to 8.5 ton capacity

### Ulti-Mat All Rubber Cow Mattress Installation



Continuous Cow-Comfort – THE ONLY All Rubber Mattress that recovers to original shape after cow movement.

**Superior Continuous Roll Rubber Flooring Available!**  
Up to 14.5' wide & 150' long.  
All NEW Virgin Rubber

*We are now making repairs to any kind of mattresses!*

## Zartman Farms Cow Comfort Systems, Inc.

820 Hilltop Rd., Ephrata, PA 17522 • 717-733-1050  
Northeast U.S. Distributor of Poly Dome Equipment • Wholesale & Retail  
zartmanfarms@dejazzd.com • www.zartmanfarms.com



## Power Systems Electric Inc.

### Emergency Generator Systems & Service

885 South Railroad Street, Myerstown, Pa 17067

### Sales, Service, & Rentals

Providing service for most brands



**Maintenance Programs**

New & Used Gen Sets, Transfer Switches, PTO Gens.



**24 HR EMERGENCY SERVICE**

info@psegenerators.com  
www.psegenerators.com

For all your generator needs call (717)933-5617

## Commodity Classic sets all-time attendance record

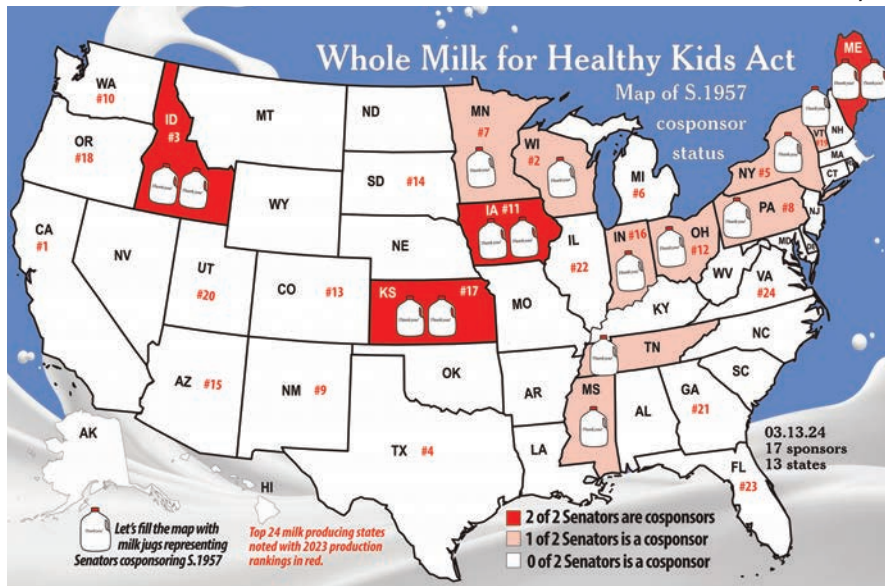
ST. LOUIS, Mo. — Over 11,500 attendees including more than 4600 farmers along with exhibitors, industry stakeholders, and ag media gathered in Houston from February 28 - March 2 for the 2024 Commodity Classic.

The Houston event broke the previous Commodity Classic record of 10,400 attendees, which was held in Orlando in 2023.

“The energy in Houston was unlike anything we’ve experienced at Commodity Classic,” said Brandon Hunnicutt, a Nebraska farmer, NCGA member, and co-chair of the 2024 Commodity Classic. “Our advance registration was about 30% ahead of our record-breaking Orlando show in 2023, so we knew we were going to have a big event for the show’s first time in Houston.”

Fellow 2024 co-chair Brandon Wipf, a South Dakota farmer and ASA director, echoed Hunnicutt’s comments. “It’s exciting to see Commodity Classic’s attendance grow in recent years. We were expecting a big crowd in Houston, and we’re looking forward to bringing the show to Denver for the first time in 2025.”

This year’s event featured more than 30 educational sessions, two sold-out trade show floors with over 435 exhibitors, a keynote address by U.S. Secretary of Agriculture Tom Vilsack and EPA Administrator Michael S. Regan, and policy meetings of the sponsoring commodity associations. Attendees enjoyed a wide variety of presentations from top farmers and well-known industry leaders along with tours of popular Houston attractions. Guests also enjoyed closing out the event at the Houston Livestock Show and Rodeo on Saturday, March 2, with a concert featuring country artist Hardy.



## Cosponsor

from page 1

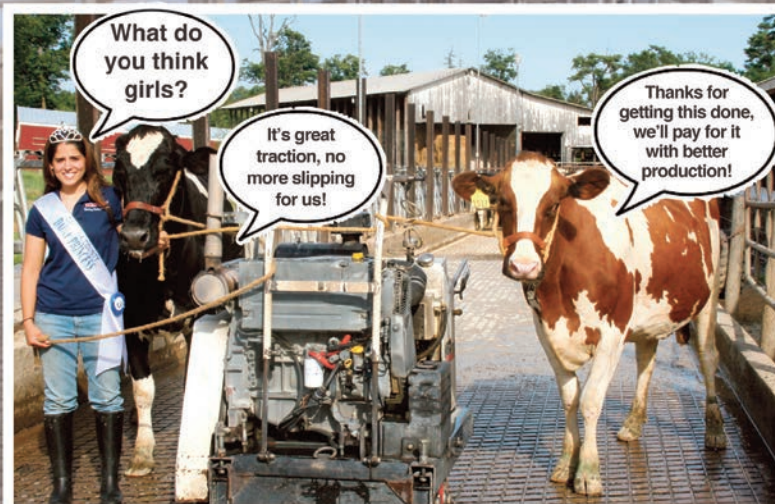
the bill at the Congressional portal, visit <https://www.congress.gov/bill/118th-congress/senate-bill/1957/cosponsors>

Look for your state on the map. Do you see one or two jugs of milk for your state indicating Senators cosponsoring the bill? Or do you see zero? Let's fill the map. Have you contacted your two? For more information, see editions of *Farmshine* published in February or visit [www.97milk.com/take-action/](http://www.97milk.com/take-action/)

## Custom Traction Grooving

Do your cows a favor...

...Keep Them on Their Feet!



**NEW**  
Now offering 3/4" wide grooves, mini grooves and surface milling in addition to our standard 1/2" wide grooves.

- Groove:**
- Alleys - down to 20" wide
  - Feedlots
  - Holding areas
  - Return lanes
  - Palpitation lanes
  - **Anywhere you have slick concrete!**

- Your results:**
- Better heat detection
  - Fewer injuries
  - Increased milk production

## Eli Fisher Construction

814-364-9361 • Centre Hall, PA

Rufus  
**Brubaker**  
Refrigeration LLC

Toll Free 1-866-665-3525

**New & Used  
Quality Milk Tanks**  
400 Gallon    1000 Gallon  
700 Gallon    1500 Gallon  
800 Gallon

**Walk-In Coolers and  
Freezers, Panels and  
Doors Available.**

*Is your water  
safe to drink?*

Even water that "looks" good can be harmful to your health and your livestock

New technology water treatment

- Save up to 50% in operating costs
- Less salt
- Less water for back wash

HOME    FARM  
COMMERCIAL    Water Quality Association

Iron Removal . . . Softener . . . ○

Nitrate Units . . . Water Neutralizer . . . ○

UV Lights . . . Reverse Osmosis . . . ○

Chlorine . . . Peroxide Applicators . . . ○

Available in 110 or 12V DC

**OREGON** Water Conditioning LLC    305 Quarry Road  
Leola, PA 17540    (717) 656-8380

## Morrissey Insurance



**Mourns the Loss  
of  
Noah Wenger**

*Rest in Peace - loyal friend, strong  
leader and loving family man.  
Well done, good and faithful servant!*

**BM MORRISSEY**  
INSURANCE  
"Insuring Your Future since 1971"

890 N. Reading Rd.  
Ephrata, PA 17522  
[www.insuringyourfuture.com](http://www.insuringyourfuture.com)  
**800-422-8335**









WIL-O-MAR FARM	18 HO	23354	886	745
<b>HERDS WITH A RHA SCC LESS THAN 200,000</b>				
KILBY FARM LLC.	HO	142	1004	
KILBY FARM LLC.	HO	143	812	
KILBY FARM LLC.	XX	147	53	

**Frederick County**

MERCURO FARM LLC.	44 HO	29371	1271	980
TEABOW INCORP.	1208 HO	28535	1108	893
SHAFDON FARMS	315 HO	28989	1183	880
SHAFDON FARMS	336 HO	28860	1174	875
SHAFDON FARMS	14 HO	29097	1094	829
MERCURO FARM LLC.	334 HO	23583	1001	804
CHRIS & JAMIE DERR	76 HO	24466	1072	803
CHRIS & JAMIE DERR	76 HO	24466	1072	803
MERCURO FARM LLC.	290 HO	22704	960	778
VENTURE LUCK FARM	108 HO	23514	967	764
PAUL COBLENTZ & SONS	487 HO	24385	946	744
DAVE & CAROLE DOODY	171 HO	21708	831	658
<b>HERDS WITH A RHA SCC LESS THAN 200,000</b>				
MERCURO FARM LLC	HO	73	44	
MERCURO FARM LLC	HO	85	334	
MERCURO FARM LLC	HO	87	290	
CHRIS & JAMIE DERR	HO	102	76	
CHRIS & JAMIE DERR	HO	102	76	
PAUL COBLENTZ & SONS	HO	169	487	
DAVE & CAROLE DOODY	HO	190	171	

**Garrett County**

MARK FARMS	104 HO	28906	1072	926
<b>HERDS WITH A RHA SCC LESS THAN 200,000</b>				
MARK FARMS	HO	121	104	

**Harford County**

STRAWBERRY HILL FARM	143 HO	25130	976	765
QUIETNESS FARM	50 HO	20299	806	654
<b>HERDS WITH A RHA SCC LESS THAN 200,000</b>				
STRAWBERRY HILL FARM	HO	119	143	
QUIETNESS FARM	HO	177	50	
CHRIS DIXON	MS	188	115	

**Howard County**

DAVID & JAMES PATRICK	127 HO	26812	1121	856
UNIVERSITY OF MARYLAND	91 HO	25590	1073	807
DAVID & JAMES PATRICK	31 AY	16873	686	562
<b>HERDS WITH A RHA SCC LESS THAN 200,000</b>				
DAVID & JAMES PATRICK	AY	92	31	
DAVID & JAMES PATRICK	HO	106	127	
UNIVERSITY OF MARYLAND	HO	193	91	

**Queen Anne's County**

LESTER C.JONES, INC.	1652 HO	28701	1322	910
KEVIN LEAVERTON	93 HO	23052	975	766
WINTERSTEIN FARMS LLC.	148 XX	22415	1014	739
<b>HERDS WITH A RHA SCC LESS THAN 200,000</b>				
LESTER C. JONES, INC.	HO	123	1652	

**Talbot County**

JARRED & TRISHA BOYCE	41 HO	26507	1104	843
-----------------------	-------	-------	------	-----

JARRED & TRISHA BOYCE	56 XX	23324	1028	772
HENRY SNOW III.	23 HO	22822	848	719
JARRED & TRISHA BOYCE	15 JE	14876	823	584
<b>HERDS WITH A RHA SCC LESS THAN 200,000</b>				
JARRED & TRISHA BOYCE	HO	113	41	
JARRED & TRISHA BOYCE	XX	133	56	

**Washington County**

SHENANDOAH JERSEYS	109 JE	24207	1096	923
RALPH W. SHANK	18 HO	26546	954	811
BRIAN FORSYTHE	18 HO	24516	985	794
DEBAUGH FARMS	135 HO	24794	939	787
DEBAUGH FARMS	146 HO	24285	932	778
CLETUS & JANICE FREY	128 XX	24008	980	775
RALPH W. SHANK	124 XX	21757	901	700
RALPH W. SHANK	75 AY	22373	907	698
BRIAN FORSYTHE	63 XX	18687	852	678
PRYOR BROTHERS	99 XX	21980	858	676
BRENT HORST	137 HO	21342	990	676
COOL BROOK FARM	117 XX	21329	869	672
DEBAUGH FARMS	10 JE	17563	841	652
BRIAN FORSYTHE	45 JE	16370	800	633
RALPH W. SHANK	23 JE	16376	827	611
LONG DELITE FARM	62 XX	17001	721	561
<b>HERDS WITH A RHA SCC LESS THAN 200,000</b>				
BRIAN FORSYTHE	HO	95	18	
BRIAN FORSYTHE	XX	107	63	
BRIAN FORSYTHE	JE	114	45	
DEBAUGH FARMS	HO	122	135	
DEBAUGH FARMS	HO	123	146	
DEBAUGH FARMS	JE	141	10	
RALPH W. SHANK	AY	160	75	
RALPH W. SHANK	HO	176	18	
LONG DELITE FARM	XX	185	62	
RALPH W. SHANK	XX	189	124	

**MAINE**

**Androscoggin-Sagadahoc**

BRIGREEN FARMS	556 HO	31856	1312	1030
<b>HERDS WITH A RHA SCC LESS THAN 200,000</b>				
BRIGREEN FARMS	HO	86	556	

**MASSACHUSETTS**

**Hampshire County**

COOK FARM	80 HO	24192	1101	815
<b>HERDS WITH A RHA SCC LESS THAN 200,000</b>				
COOK FARM	XX	143	80	

**NEW YORK**

**Cayuga County**

AURORA RIDGE DAIRY	2662 HO	30854	1226	958
<b>HERDS WITH A RHA SCC LESS THAN 200,000</b>				
AURORA RIDGE DAIRY	HO	122	2662	

**Chenango County**

MARSHMAN FARMS	423 HO	28123	1204	881
EVANS HOLSTEINS	92 HO	20372	738	609
<b>HERDS WITH A RHA SCC LESS THAN 200,000</b>				
MARSHMAN FARMS	HO	116	423	

**Cortland County**

MCEVOY, CHARLES & KENNET	33 HO	17370	703	546
<b>HERDS WITH A RHA SCC LESS THAN 200,000</b>				
MCEVOY, CHARLES & KENNETH	HO	114	33	

**Genesee County**

OAKFIELD CORNERS DAIRY	2595 HO	31784	1393	1046
OAKFIELD CORNERS DAIRY 2	3335 HO	32099	1362	1071
<b>HERDS WITH A RHA SCC LESS THAN 200,000</b>				
OAKFIELD CORNERS DAIRY	HO	97	2595	
OAKFIELD CORNERS DAIRY 2	HO	130	3335	

**Niagara County**

LAKE SHORE DAIRY LLC.	2084 HO	30188	1284	964
<b>HERDS WITH A RHA SCC LESS THAN 200,000</b>				
LAKE SHORE DAIRY LLC.	HO	191	2084	

**Oneida County**

WORMMONT DAIRY	278 HO	18319	833	611
----------------	--------	-------	-----	-----

**Saratoga County**

WELCOME STOCK FARM	977 HO	27817	1299	926
--------------------	--------	-------	------	-----

**Washington County**

LIDDLEHOLME	77 HO	18570	733	580
<b>HERDS WITH A RHA SCC LESS THAN 200,000</b>				
LIDDLEHOLME	HO	168	77	

**Wyoming County**

WOODVALE FARMS	854 HO	28265	1158	922
<b>HERDS WITH A RHA SCC LESS THAN 200,000</b>				
WOODVALE FARMS	HO	74	854	

**OHIO**

**Holmes County**

ROD HUNSBERGER	183 HO	31267	1151	971
DEAN WOLBOLDT	85 HO	22206	909	716
DEAN WOLBOLDT	118 HO	20964	888	694
LOREN LANG	213 HO	20829	815	666
DEAN WOLBOLDT	21 XX	16869	782	599
<b>HERDS WITH A RHA SCC LESS THAN 200,000</b>				
ROD HUNSBERGER	HO	102	183	
DEAN WOLBOLDT	HO	106	85	
DEAN WOLBOLDT	HO	145	118	

**Huron County**

ONEY'S MILKY-WAY FARM	595 HO	30708	1214	979
-----------------------	--------	-------	------	-----

**Lorain County**

JALODA FARMS	132 HO	24935	1034	822
<b>HERDS WITH A RHA SCC LESS THAN 200,000</b>				
GRIM FAMILY FARM	GU	198	24	

**Tuscarawas County**

STEAM VALLEY FARMS, INC.	137 HO	25439	980	783
<b>HERDS WITH A RHA SCC LESS THAN 200,000</b>				
STEAM VALLEY FARMS, INC.	HO	165	137	

**Wayne County**

STERLING HEIGHTS DAIRY	1133 XX	30474	1135	963
STEINHURST FARMS	693 HO	31030	1233	963
GREGG TROYER	147 HO	26918	1150	926
CANAAN FARMS LLC.	292 HO	28650	1231	869
RUPP-VUE FARM	343 HO	26543	1040	846
ZOLLINGER	114 JE	19521	1043	744
RAMSEYER, CHAD	324 JE	17255	923	680
<b>HERDS WITH A RHA SCC LESS THAN 200,000</b>				
ZOLLINGER	JE	88	114	
GREGG TROYER	HO	103	147	
RAMSEYER, CHAD	JE	112	324	
CANAAN FARMS LLC.	HO	166	292	
RUPP-VUE FARM	HO	168	343	
STEINHURST FARMS	HO	197	693	

**WEST VIRGINIA**

**Mineral County**

BROOKEDALE HOLSTEINS	70 HO	18269	725	568
<b>HERDS WITH A RHA SCC LESS THAN 200,000</b>				
BROOKEDALE HOLSTEINS	HO	181	70	

Looking for Delaware and New Jersey DHIA? We'll print it next week.

**NELSON & SONS CONCRETE GROOVING**

FULL SURFACE & WIDE GROOVING

*We've Expanded!*

NOW 2 LOCATIONS - PA & NY  
2nd Branch Located in Finger Lakes, NY

Serving PA, NY, & Surrounding States

**610-589-1030**

Save Cows, Save Your Profit Margins

[www.NelsonandSonsConcreteGrooving.com](http://www.NelsonandSonsConcreteGrooving.com)

• Increase Milk Production  
• Increase Heat Detection  
• Reduce Hoof & Leg Injuries  
• Reduce Cull Rates

"I still lost cows when I grooved. Agri-Trac came in and changed that! This is real Traction for my cows! I noticed the difference right away! I liked it so much I had them come back and do the rest of my barns! No more grooving for us! Thanks Agri-Trac!" — **Unc Brock, Schaghticoke, NY**

"AGRI-TRAC Traction Milling lasts and it won't wear! It works! I believe in it! No more slippery floors! No more grooving every few years! AGRI-TRAC lasts far longer than grooving. No more lame or down cows!" — **Jim Akam, Concord Valley Farms, Spartansburg, PA**

"Agri-Trac works so good after they milled our floors our milk count went up 2lbs per day without changing anything else! You can see the confidence our cows have now when walking and running. No more down cows with grooving! Thank you AGRI-TRAC!" — **Ron Deboover, Vince Deboover Farms, Geneva, NY**

"We had slippery floors and lost cows. Now my cows have real traction! This is a game changer for us. Thanks to Agri-Trac now our cows are happy. This is a game changer!" — **Matthew Rohrer, Rockingham, VA**

"Right after my barn floors were milled we had real Traction for the first time since we started milking cows. I realized a 5lb per cow increase right off. My cows are completely different. I will never groove again! Thank you AGRI-TRAC!" — **Derrick Nop, Montgomery, NY**

"AGRI-TRAC Traction Milling works 100%! I have grooving and it does not work! AGRI-TRAC milled right over my grooving and fixed it! I will stick to AGRI-TRAC in the future!" — **Robert Musser, Shippensburg, PA**

Our Gift of Green Spray from [www.andrewsago.com](http://www.andrewsago.com) that all vets, farmers, hoof trimmers, and farriers are using for cuts, warts, ringworm and hoof rot.

**Call to find out more: 717-682-8557 or toll free 877-966-3546.**

**Agritraction.com**

**LIRA GOLD® Silage Inoculants**

Innovative Science Locks in Feedstuff Value and Maximizes Forage Quality

- Micro-encapsulation enhances fermentation activity
- Combines bacteria and enzymes
- Rapidly lowers pH and controls heating
- Optimizes forage consistency and palatability

At Penn Dell Holsteins, LIRA GOLD® Inoculants are a vital part of their success in making quality forages.  
"We have used many other inoculant products over the years but have not found any that control heat damage, retain more valuable nutrients and enhance palatability of our haylage as well as LIRA GOLD. We have found using LIRA GOLD Inoculant doesn't cost, it pays!"  
Jim Houser, Penn Dell Holsteins, Spring Mills, PA

**Contact your LIRA GOLD Dealer and Lock in Your 2024 Silage Inoculant Needs Today!**

**call 800-992-3147 or visit LIRAGOLD.com**

Distributed in Central PA/MD by: Paul Miller & Sons • 717-469-7195 | Distributed in Eastern PA/MD by: Hostetter Healthcare, LLC • Dick Hostetter • 484-437-8973

**LIRA GOLD**  
NUTRITIONAL SOLUTIONS FOR HEALTH & PRODUCTIVITY



# Classifieds

"Say you saw it in FARM SHINE"

## 1 Services

**RELIEF MILKING IN YOUR** tie stall barn, holidays also. Lancaster Co., Pa. 717-335-2563. (3/15)

**FARM INSURANCE:** barns, equipment, hay and grain storage, Workers' Compensation, farm stands and stores, vehicles and farm homes. N.Y., Pa. and Va. Call Alec Pandaleon at 845-242-0113.

**AG PHOTOGRAPHER -** senior, family, natural cattle portraits. Sales, herd dispersals and ag event photography coverage and albums. Based in Lancaster, Pa. A Farmgirl's Dream Photography. 717-824-1320.

**BALING SERVICES - CUSTOM** 3x3 and round baling, along with individual wrapping. Out of southern Lancaster, Pa. 717-826-3775.

**REPAIRING ALL KINDS,** makes and models farm machinery, specializing in discbines, pull type harvestors and corn planters. Also general welding. We also repair older tractors. Harsue Repair, New Holland, Pa. 717-355-0715.

**BOB & MILLIE'S DISCOUNT** signs. The cheapest guys in town. Free delivery on all sign orders. bobthesignman@yahoo.com. Real Estate-Construction-Banners-Yard Signs-Decals-Magnetic Signs-End of Lane Farm Signs. apple-treesigns.com. 410-708-1341.

**COMPOSTECH LLC. IS A** local Honey Brook business, making and selling organic compost at \$30 per cubic yard. Call Dave at 610-441-5154 to schedule a pick up. Also taking horse manure for free, must be dropped off.

**LOWER SCC & IMPROVE** conception. Highly effective, 35 years of time tested results and satisfied dairymen nationwide. No withholding ever feed additive, low cost. Call AG, Inc. today. 920-650-1631. www.alphageneticsinc.com

**DAIRY PRODUCER -** would you like to lower SCC and mastitis rates, provide milking training, breach the language barrier and improve parlor performance? Call Adolph Dossman at 240-286-8996.

**INNOVATIVE DAIRY** Nutrition - specializing in forage planning to maximize production and optimize herd health through advanced nutrition. To improve your profits, contact Matt at 717-729-4530

**REDUCED PRODUCTION?** Heat stress? High SCC? Scours? Proven effective solutions to your herd's health needs, no withholding. Call the Dairyman's Helper. 800-829-7512.

**CUSTOM COLLECTING -** Call for prices. 301-491-3154. Triple-Hil Sires.

**RELIEF MILKING-farm** sitting. Tie stall or parlor. Feeding and young stock care. References available. Adrian Homing 717-466-9099. South-Central, Pa.

**KANN'S MILKING SERVICE** Franklin & Cumberland Co. 30 years experience, references available. Ryan L. Kann, 717-816-1920.

**BARN FULL? WITH 8+** years experience raising heifers, I am the solution to your problem. Space available now. Call today to discuss this opportunity. 717-860-8867.

**CUSTOM HEIFER RAISING.** Weaned calves to calving. 19 years experience. Modern housing, free stalls, AI breeding, TMR, monthly vet visits. Lebanon Co., Pa. 610-451-3006.

**GARDNER CUSTOM HEIFER** raising. 40 years experience. TMR in fenceline feeders with lockups, dairy veterinarian manages, adolescent to springers, competitive prices. 540-871-0246, dlggar@aol.com, gardnerheifers.com.

**CUSTOM HEIFER RAISING.** 300-400 head capacity. AI breeding, hauling available. We do not have state of the art facilities but are committed to an accelerated feeding pro-

gram. Call for pricing. Reach us at 240-291-0286.

**HEIFER RAISING SERVICES** offering full health care program, excellent AI breeding program, activity monitor collars, balance ration, pasture for older heifers. Lancaster Co. 717-940-9435.

**CUSTOM HEIFER RAISING.** Good quality forages. Minerals and hay in TMR. Room for 150-200 head. Troy area. 570-220-4542.

**HEIFER BOARDING -** Sand bedded freestalls. Corn silage haylage and hay included. \$2/hd/day. 607-382-3633.

**HORSE BOARDING** available, Willow Street, Pa. area, Lanc. Co. 717-380-7612.

**ADAM'S HOOF TRIMMING.** 22 years of experience. 717-813-1358.

**MID-ATLANTIC HOOF** Trimming - providing farmers professional hoof care in Maryland, Virginia, Pennsylvania and surrounding states. Call Mikey Barton at 518-567-8046 today for inquiries/scheduling.

**HASTINGS HOOF TRIMMING** is looking for clients in Pa., N.Y. and Ohio. Call or text 315-283-2717 for a quote.

**CATTLE HOOF TRIMMING,** Western, Pa. Stand up chute, over 10 years in business. Looking for new clients. 814-279-7932, ask for Russell.

**TSHUDY'S HOOF TRIMMING.** Quarryville, Pa. Serving Southern Lancaster, Chester and York counties since 2003. \$11/cow, free wraps. Hydraulic tilt table. 717-917-8715.

**STAND UP HOOF TRIMMING.** Two man trimming crew, excellent cattle flow. Serv-

ing South Central Pa. and surrounding counties. Will travel for large numbers. Call Matt Weaver at 814-793-9966.

**HOOF TRIMMING** Service. 717-755-0770.

**PHILBRICK'S HOOF TRIMMING** serving western and central Pennsylvania, western New York and eastern Ohio. 814-720-0010.

**HOOF TRIMMING -** Garrett Co., Md. Tilt table. Willing to travel distances for large groups/herds. \$10/ cow. Trained at Dairyland Hoof Care, Wis. Call 301-616-2195.

**HOOF TRIMMING SERVICE** - providing quality service for large and small dairy and beef herds. \$10 per cow. Graduate of Hoof Care Institute. Stand up chute. 315-573-6742.

**MACIK HOOF TRIMMING -** Beef and dairy cattle. Hydraulic tilt table. Serving Western PA, Eastern OH, Northern WV. Phone 724-345-8501.

**PROF HOOF TRIMMING -** RSW Farms LLC. Hydraulic table, competitive rates, serving MD/PA/NY. Contact Ryan 518-935-7704, RSWFarms@yahoo.com.

**MIKE'S HOOF TRIMMING -** Since 1988. Hydraulic table. 814-997-9021.

**PROF. HOOF TRIMMING-** call for more info/available dates. 570-690-1017.

**SHUMAN'S HOOF CARE-** Serving dairies in Northeastern & Northcentral Penna. and the Finger Lakes region of N.Y. Call Tom, 570-418-1684.

**CORRECTIVE HOOF TRIMMING -** New Tuffly -tilt table. Cow comfort, professional work. Call Sam Beiler 717-222-6180.

**NEED YOUR COWS** clipped? Call 717-768-8345 ext 1.

**STRUGGLING WITH MICE** and rats? Try First Strike. Oregon Ag LLC. 717-656-0067.

**DEAD ANIMAL REMOVAL.** Call Mike at 717-855-5503.

**DEAD ANIMAL REMOVAL.** Removal of dead farm animals. 717-228-9500. M-F 8-4, Sat. 8-11 or text.

**LIVESTOCK HAULING** Local/long distance. Pa., N.Y., Ohio, Va. 814-592-2543.

**SILO DEMOLITION.** 717-786-6063.

**HARVESTORE SILO REPAIRS,** extensions, and roof replacements. 717-786-6063.

**NEED YOUR EQUIPMENT,** building or house pressure washed? We have the equip-

ment to do the job. Call us at 717-644-6295.

**DAIRY SERVICE TECH -** servicing all brands of dairy equipment. South central, Pa. Wes Sollenberger, 814-505-6304.

**CUSTOM COMBINING** services. Well maintained equipment. Reasonable prices. Call 315-573-6742 for more information.

**RESTORING GRANDPA'S** old tractor doesn't have to cost an arm and a leg! Full service repairs and restorations. Agriculture and industrial repairs. York Co. 717-368-1354.

**FARM MACHINERY REPAIRS,** NH small square baler parts, Discbines, Haybines, rakes, feed mixers, discs (new blades), forage harvesters and more. 607-243-5896.

**DISCBINE DOCTOR -** Repairing all makes. Buying & selling. After market cutter bar, bearings, or NH/JD/ Kuhn and used parts. Call ahead 717-768-7542.

**SERVICE DONE ON ALL** brands of fence energizers and battery chargers. Call Sensenig's Electronic Repair 717-445-9905 for your repair needs.

## GTPI~TYPE SALE

16TH EDITION Friday, April 12 • 11 a.m. • Lancaster, Pa.

110 lots sell including cows, heifers & calves that will show, choices of flush, exciting embryos, IVF sessions and several breed leading genomic lots!



**Arethusa Sanchez Dice-ET EX-96,3E EEEEE**

Dice was Grand Champion of the NE Fall Nat'l 2015 and is backed by EX-93 X EX-96 All-Am. Her fancy Spring yrlg. dau. by Energy leads a stellar group of show calves hand selected to help you win!

Watch for future ads!

A few early highlights include:

- IVF session from beautiful fresh Doc X "The Yoder" EX-96,3E All-Am
- +3187G + 1113NM\$ Sheepster sells
- +3159G + 1176NM\$ Kahn sells
- IVF session from 3160G + 1234NM\$ Sheepster
- +2894G true Red & White sells along w/ fancy fresh Dam X EX-93,2E
- King Doc due July X Gold Chip Karamel EX-93,2E
- EX Select X EX-92 X Dina EX-96,2E All-Am
- VG-87 Delta-Lambda just fresh w 2nd calf & sure EX by deep show family
- Group of fancy Jerseys including fresh VIP X EX-92 X EX-95 plus several show age Jersey calves

STILL TAKING QUALITY CONSIGNMENTS, CONTACT ONE OF THE SALE MANAGERS:

**Daniel Brandt**  
PEDIGREES & MARKETING  
167 Valley Lane, Annville, PA 17003  
Ph: 717-821-1238 Fax: 717-867-5493  
E-mail: brandtfive@comcast.net



If It's A "Cow Thing" We Do It!  
**Bob & Janice Landis**  
915 VALLEY ROAD • LANCASTER, PA. 17601  
PH: 717.413.1232  
EMAIL: LANDISMARKETING@AOL.COM

## Special Dairy Sale

Approx. 140 head sell

SALE HELD AT FISHER'S QUALITY DAIRY SALES  
3304 OLD PHILADELPHIA PIKE, RONKS, PA.

FRIDAY, MARCH 22 • 11 A.M.

We will be selling many good, young, fresh cows and heifers, Reg. and grades, from overstocked herds and heifer raisers.

**Group 1** consists of 27 top, young cows hand picked from one 400 cow herd, 26,000 RHA. They are mostly 2 and 3 yrs., mostly fresh last 60 days except a few due this fall. Mostly AI sired. Cows milking up to 129 lbs. This is a super milky group of cattle from one closed herd. Cows milked in parallel parlor. This group will make many people happy! Cows milked in tie stall two weeks prior to sale.

**Group 2** consists of many good, young, fresh cows and heifers from overstocked herds, including:

- Reg. VG-85 4 yr. Millington dau., fresh, milking 115 lbs.
- Reg. 4 yr., 83 pt Diamondback, fresh Feb., 110 lbs. Dam EX, made 38,000 1500 BF. 2nd dam EX-92, made 35,000 1500 BF. Next 3 dams VG or EX.
- Reg. 3 yr. Hank, GP-84 as 2 yr., fresh Feb., 100+ lbs. First 4 dams all EX.
- Reg. A2A2 2 yr. Jersey Achilles dau., fresh 3-9, fancy show prospect. Dam sold for dairy for \$3400. 2nd dam VG-85.
- 5 top young, fresh cows sell from one 27,500 herd.

Plus many good, young, fresh cows and heifers with loads of milk!  
If you need good, young, fresh cows with lots of milk,  
we should have the cow you need.

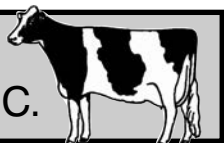
Free chocolate milk • Not responsible for accidents

Sale managed by: **FISHER'S QUALITY DAIRY SALES**  
**Jonas Fisher • 717-768-3297**

Auctioneer - Dave Stoltzfus - AU005655 • Pedigrees - Dan Albright

Free ice cream

**NEW HOLLAND SALES STABLES, INC.**



Free ice cream

Located 12 Miles East of Lancaster, PA. Just Off Rt. 23, New Holland

## DAIRY COW & HEIFER SALE

WEDNESDAY, MARCH 20<sup>TH</sup> • 10:30 A.M.

Featuring: **M.C.C. Donation Heifer Sale**  
at approx. 12:30 p.m.

All consignments welcome. Cows - Heifers - Bulls.  
\*Please specify if consignments are for M.C.C.

Quality fresh cows and well-grown heifers  
are selling at an **All Time High!**

Consignors: Please send all info with truckers for the catalog.  
For more information, contact dairy reps:  
Aaron Martin, 717-445-4825 (home); Bill Hough, 973-224-0204 (cell).

Thank you - N.H.S.S.

Sale Managed By  
**New Holland Sales Stables, Inc.**

Barn 717-354-4341 Fax 717-355-0706 • David Kolb, Mgr. 61L

**3 Dairy Equipment**  
**USED RISSLER WOODEN** conveyors, 32 ft. with drive, 30 ft. no chain, no drive. \$600. 814-404-4662. (4/5)  
**BUCKET MILKERS - 3** DeLaval and 4 Surge, pails and strainer. Western New York. 716-200-6354. (3/22)  
**NEWLY REBUILT GAULIN** 200E milk homogenizer. Rated for 200 gallons per hour. New pistons, valves, seals, gauges, etc. Asking \$29,500. Call Randy at 814-663-0921.  
**URBAN MILKSHUTTLE**, model 250. Very good condition. Not a pasteurizing unit. No longer raising calves. \$4500. Attica, N.Y. 585-590-9115.  
**SELLING CONTENTS OF** homemade ice cream shop and plant equipment, various cabinets, bulk tanks, vats, etc. Please contact Michele at 570-878-6100. Scott Township, Pa. 18447.

**AS**  
**Precast Systems, LLC**  
 Producing concrete since 1923  
**FEED BUNKS**  
**BUNKER SILOS**  
**CATTLE GUARDS**  
 NCPA certified plant  
 Installed on site  
 717-369-3773  
 www.precastsystemsllc.com  
 5877 Bullitt Rd. Greencastle, PA 17225

**WESTFALIA SURGE** autotandem milking parlor, good condition. 2x4 stalls, metatron meters, 5 hp variable speed vacuum pump, plate cooler, receiver. All for \$8000. 570-809-6567.  
**20 DAIRYMASTER** pulsators, takeoffs, sensors and complete claws. Will not part out. Willing to meet within reasonable distance. Call 814-329-5176 for information. (4/26)  
**60 STURDY BUILT STALLS**, \$1600; 60 cow comfort cow mattresses, \$500; stainless steel pipeline for 60 cow tie stall barn, \$1500. You remove and haul. Call Jeremy at 717-437-5215. (3/29)  
**4' X 6' COW MATS. GOOD** mat for the money and easy to install. \$80 each, including hardware. Call 717-304-6684.  
**USED MILK TANKS - 375** gal. Milkeeper; 600 gal. Mueller M; 800 gal. Mueller OH; following tanks are storage only: 1500 gal. Mueller O; 800 gal. O. T. H. Horning. 717-438-3104.  
**GUTTER GRATES FOR** tiestall barns. Innovative design prevents hoof injuries. Call for more information and current pricing. 717-464-6476.

**17 foot Goliath Unloader, good condition. Call 717-363-6741**

**4 Dairy Cows**  
**TIE STALL COWS-24 REG.** Holsteins, 5 Jerseys (3 Reg.), SCC 99,000. 814-267-3875  
**BUYING AND SELLING** dairy herds, heifers and service bulls. Aaron Coons, 717-816-4118.  
**JUST FRESH, 1ST LACTATION** Reg. Holstein cows. Good quality, well grown animals. 3-4 generally available each month. 570-297-5118.

**6 Dairy Bulls**  
**POLED, RED, A2A2** Risk P son. Maternal brother to Panic PP at Triple-Hil Sires. DOB 2/24/23. \$2000. 717-320-3330.  
**OCEAN-VIEW SEXATION** grandson. A2A2, proven breeder, ready for cows. Dam Joseph dau. with 31,000 lbs. with 4.1 BF. 2nd dam Redman, 27,000 lbs., 4.7 BF. 3rd dam Advent. 4th dam Shottle from the Gloryland Liberty Rae family. \$2375. Martin-Dale Holsteins, Lancaster, Pa. 717-445-6548.  
**B&W AND R&W POLED** homozygous Holsteins, A2A2. Some genomically tested also. Lebanon Co., Pa. Con-Ger Farms. 717-821-1454.  
**WANTED - Reg.** Jersey bull, 12-15 mos. old. 856-478-2942.  
**REG. HOLSTEIN BULLS** for sale. Ar-Joy Farms, Cochran-

ville, Pa. 610-637-7423.  
**HOLSTEIN BULLS** ready for free stalls and younger. High genomic tested bulls from contract matings and high type cow families. 610-932-6062. Call between 8:00-8:30 a.m.  
**BULLS FOR SALE & LEASE - Reg.** Holsteins, any age out of dams with records to 30,000M, 1200F. Stump Acres. York Co. Call 717-792-3216.

**7 Semen, Embryos**  
**HELSEL-HILL HAS** expanded. Call or text Keith Helsel for No Bull sires, Blondin sires, Resolution-Red, Furnace Hill Zas Endure, and more. 814-515-5455.  
**CUSTOM COLLECTING - WE** custom collect your bull at our facility. Semen is processed with high quality standards at very competitive rates. We also offer short-term housing options during collection. Triple-Hil Sires 855-955-2100.

**DONEGAL-CREEK BAXTER** Pedro-ET, reg # 139932533. He is EX-94 AAA (4352). From 5 EX dams- 94, 90, 91, 91 & 95. Dam is 94 pt. Outside daughter, still in herd at 10 yrs. old & looks half her age. Sire stack is Baxter, Outside, Rudolph, Conquest, Starbuck, Citation R, Elevation. Very well balanced bull siring the right kind. Strength with dairyness.

High productive life, low SCC, high conception. Early daughters are milking great & look better than their dams. Priced at \$14 for 20 units or more. Joe Wivell 717-471-5260.

**9 Equipment & Machinery**  
**DUNHAM LEHR 31-15** cultimulcher. \$1500. East Earl, Pa. 717-917-8324.  
**GEHL 1540 SILAGE** blower, \$400 OBO; antique JD 1.5 hp hit and miss engine, \$775 OBO. 973-703-5148.  
**NEW HOLLAND 3PN** corn head for FP240 harvester. Nice, original condition, field ready, late model. Call for more information. \$8900. 717-351-0353.  
**2017 MCHALE VALERO** round baler with wrapper, only 1600 bales, heavy duty pickup package. \$107,500. 859-608-9745. (3/29)  
**NEW HOLLAND**, Ariens parts inventory sale. Retired dealer 40 years selling in lots, remaining current; older model parts. Western Mass. Serious inquiries. 413-738-5379.  
**NEW HOLLAND 260** rake teeth. 20 new at \$4 each, 25 slightly used for \$2 each or take all for \$120. Lancaster Co., Pa. 610-334-4885.  
**RISSLER 1 YARD** self-unloading skid loader bucket with 8" unload auger. 717-463-9731.  
**FOR RENT: E RISSLER 330** trailer TMR mixer, \$30/day; IH Rissler 510 TMR cart, \$10/day. Delivery avail. Myerstown, Pa. 484-793-2179.  
**ROOFERS BUGGY-RENT** for \$125/day or \$500/week. Lancaster Co., Pa. 717-808-4155.

**10 Feeds**  
**CORN FODDER FROM** non gmo corn and straw, large or

small bales. East Earl, Pa. 717-917-8324. (3/15)  
**1ST, 2ND, 4TH ALFALFA** tested, 3x4x8' Chinook dried straw. Delivered or FOB. 610-767-2409, heidelhollowfarm.com.  
**BUYING DAMAGED GRAIN.** Trucking is available. Call 717-575-5197.  
**CERTIFIED ORGANIC KELP** meal. Redmond minerals. Dealers available in select areas. Hess Farm Supply. 717-354-9492.  
**FASTRACK -** Improve milk production, increase feed utilization and improve herd health with Fastrack direct fed microbials. Contact Karl at 740-504-2859 or email kllbss@columbus.rr.com.

**11 Hay**  
**SILAGE TO BE MADE IN** the fall, can be non gmo; alfalfa and mix hay small bales, lots of leaves, \$330/ton, extra fine \$370/ton; East Earl, Pa. 717-917-8324. (3/15)  
**GOOD QUALITY GRASS** hay. Small square bales. Wyoming Co., Pa. 717-250-1399. (3/29)  
**CERT. ORGANIC 1ST, 2ND** and 3rd cutting balage in tubes, individual wrap if needed; 4x5 dry round bales heifer dry cow hay. Delivery available. 570-250-1725.  
**ALFALFA BALEAGE**, 4x4 wrapped round bales, \$50 each. Also, small square bales alfalfa or grass, various prices. Richard Trinca, 814-349-8010.  
**HIGH QUALITY 1ST & 2ND** cutting grass hay, 3x3x7 bales, low potassium. #1 hay, tested. Lebanon Co., Pa. Con-Ger Farms. 717-821-1454.  
**CERTIFIED ORGANIC** mixed grass and clover hay. Call from 7a.m.-4 p.m. 717-463-9731, leave message.  
**ROUND BALES OR LARGE** squares. Delivered by ton

FINE GROUND *Wood Bedding*  
**Dry, Absorbent BEDDING** For Sale  
 14 yd. 30 yd, and 110 yd loads  
 Call for Pricing  
 Buy in bulk and save!  
**BEILER INDUSTRIES** 717-768-7667

**Sell your Holsteins through PHA!**

- Wanted: 200/month! Reg. or sire ID'd open heifers, ready to breed. Must be negative Leucosis, BVD & Neospora. Call today!

**Upcoming sales:**

- March 23, 2024 – DVU Green & Gold Spring Spectacular, Doylestown, Pa.
- July 6, 2024 - PHA Summer Sensation Sale & Picnic at McWilliams Farm in Somerset, Pa. Selections are underway.

**PA Holstein Sales**  
 Pennsylvania Holstein Association  
*Herd dispersals done right by trusted sales management that is licensed and bonded!*  
 Contact: David J. Lentz, 717-329-9202, djl1018@pa.net or PHA office, 814-234-0364. Email: director@paholsteins.com

**Replacement Silo Doors**

**Many Kinds In Stock**

- Marietta
- Fickes
- Madison
- Terre Hill
- Lancaster
- Ribstone

**Silo Door Hardware**

- Butterfly Hinges
- Latches
- Steps
- Ladder

*Silo Doors Made To Order Bring Pattern of Old Door*

**Willow Road Silo Doors**

Daniel Beiler  
 624 Willow Road  
 Lancaster, PA 17601  
 717-394-1004

**WHOLE SHELLED CORN**  
 • WHOLE COTTONSEED • CORN • 48% SOYBEAN MEAL • ROASTED SOYBEANS • CANOLA MEAL • LINSEED MEAL

**TRIPLE • M • FARMS**  
 Custom Feed Mfg.  
 WE MIX FEED ACCORDING TO CUSTOMER AND NUTRITIONIST FORMULAS

Also Available:  
**BULK COMMODITIES**

Call Us At:  
 (717) 272-3225

MINERALS NON-GMO  
 • TURBO MEAL • AminOleic • BLOOD MEAL • BEET PULP • FATS •

**3/32" FINE GROUND CORN**

*Horse Consignment Auction*  
**700-800 Head Friday, March 22 700-800 Head**  
**Penns Valley Livestock**  
 2925 Penns Valley Pike, Centre Hall, Pa.  
**SPECIAL WORK HORSE SALE**  
*Sale is one week earlier than usual*  
 Starting with AS-IS horses at 7:30 a.m.  
 Work horses at 8:00 a.m., followed by ponies, riders and drivers.

**ALWAYS A GREAT SELECTION OF TOUGH, FARM READY WORK HORSES AT THIS SALE!**

**\$5,000 IN PRIZE MONEY TO BE GIVEN AWAY TO 10 LUCKY BUYERS AND SELLERS OF WORK HORSES!**

Call (814) 364-1796 (leave message) or fax (814) 364-1426 to catalog horses. **MUST** be in by Wednesday before the sale to make deadline.

**Spring Machinery Sale** ..... April 13, 9 a.m.  
**Special Driving Horse Sale..** April 26, 7:30 a.m.  
**Special Riding Horse Sale** ..... May 25, 11 a.m.  
**Monthly Horse Sale** ..... May 31, 7:30 a.m.

You may start bringing horses in **Thursday, March 21 at 2 p.m.**  
**Sale the last Friday of every month.**

**Auctioneers:**  
**Atlee Shetler AU005270 | Vernon Yoder AU005267**

**SOLLENBERGER SILOS**  
 5778 Sunset Pike  
 Chambersburg, PA 17202  
*Poured Concrete Silos for Farm and Industry Since 1908*  
 For information call:  
**Ken Mansfield**  
 717-503-8909  
 www.sollenbergersilos.com

**SOYBEAN ROASTING ON YOUR FARM**

- Full-fat roasted soybeans for maximum feeding value
- High-energy, bypass protein and palatability
- Toxic enzymes and molds destroyed
- Custom roasting in MD, DE, PA & Southern NJ

**HORST GRAIN ROASTING**  
 Chester Co., PA  
**(717) 926-4310**

**Zimmermans**  
**Glasslined Storage**  
 Oakland Mills, PA  
 36 Yrs. Experience • Silos & Tanks  
**717-463-9731**  
 www.silosandtanks.com

Pre-Owned Slurrystores® and Harvestores® in Inventory - Ready to be built **COMPARE OUR PRICES & QUALITY**

**FUSION®** TANKS & SILOS  
**AISTOR** Stainless Steel Engineered Roofs  
**Zabel Equipment** Hydraulic Manure Pumps  
**DRYHILL** Manure Pumps

**afs automatic** Hammermills  
**E. RISSLER MFG.** Spiro Mixers  
**Quality Parts, Inc.** Harvestore® Aftermarket Parts  
**Challenger** Slurrypump HOT-DIP GALVANIZED

Rebuilt Harvestore® Unloaders In Stock - installed with a 2 year warranty  
**WE SERVICE WHAT WE SELL**

**SERVICE DEPOT**

Alvin Eberly Harrisonburg, Va. 540-820-0818  
 Norwain Acres Orrville, Ohio 330-621-1276  
 Zimmermans Oakland Mills, Pa. 717-463-9731

Zimmermans is not affiliated with CST Industries, Inc.

loads. Coons Farms. Call 717-816-4118.

**HAYBUSTERS** - Dairy and beef quality alfalfa, low K hay and straw. Large and small squares. Call Mark at 800-371-7928, or visit [www.haybusters.com](http://www.haybusters.com).

## 12 Straw & Bedding

**CHOPPED STRAW** in 3x3x6 bales. Good for bedding or TMR mixers. Available now. Lebanon Co., Pa. Con-Gen Farms. 717-821-1454.

**HIGH QUALITY SAWDUST** available for delivery. Great sawdust for dairy and beef cattle. Call 301-334-6212 for delivery range, pricing and availability.

**USE BALED SHAVING** in your dairy barn. You'll love this very fine pine bedding. \$5.50/ 40 lb. bag. 610-273-3602.

**HAY OR STRAW**—any type or quality. Call 717-253-6049 for pricing.

## 14 Tractors

**2009 675C CHALLENGER.** 260 HP, CVT trans, 4600 hours. Duals front and back. Rubber 80%. New hydraulic pump. Everything works, field ready. \$100,000. 301-988-1057.

## 15 Vehicles & Trailers

**TRAILER PARTS, TOWING** accessories, trailer hitch, and cushion hitches. UPS to your door. Weaver Distributing. 1-800-Weaver-D. Save!

## 16 Fencing

**TIMELESS FENCING** - The post is the insulator. Versatile design is self-insulating and easy to install for sheep, goats, cattle & horses. Allegheny Meadows. 814-285-1541.

## 17 Silos

**SILO UNLOADER WINCH;** Harvestore silo sheets. 717-363-6741.

**USED A.O. SMITH** model 1250 Slurry Pump with agitation nozzle and load out line. 717-463-9731.

**SILO DEMOLITION.** Contact Beiler Silos. 570-745-3574.

**HARVESTORE SILO ROOFS,** affordable white or stainless. Solve spoilage. Sheet replacement, silo demolition. Parts and repairs on Harvestore and stave silos. 717-517-2080.

**HARVESTORE SILO REPAIRS,** also demolition and removal. Used replacement blue or white silo roofs, door frames, doors, lids, breather bags. Installation avail. 717-768-0452.

**BEILER SILOS - SILO PARTS,** sales and service. New and used silos. Shotcrete relining. Foundation repair with Shotcrete. Tear down and rebuild.

Silo doors made to order. 20 years experience. Serving Lycoming and surrounding Co. Jersey Shore, Pa. 570-745-3574.

**I BUY USED SLURRYSTORES.** 315-404-6721, 315-495-6506.

**SILO DOORS,** galvanized steps and latches, poly door panels cut to size for all types of silos. Quality products are always a good investment. Meadow Springs Farm, Gor-

donville, Pa. Sales brochures and quotes call J. Elmer 717-768-3337 ext.1.

**RE-BUILT SILOS,** New or used, relines, parts and repairs. Call SR Silos 717-527-4103.

# BRUBACKER'S QUALITY DAIRY SALES

10 BROWN ROAD, SHIPPENSBURG, PA

Thursday, March 28 @ 10:30 A.M.

## ND-Druvale Red & White or RC Reduction Sale!

- ★ **Nd-Druvale has decided to downsize their herd and sell some of their exciting breeding stock!** If you're looking for EX cows to build up your herd, or some young heifers to breed and show, you don't want to miss this opportunity! 100-120 head sell! **Many descendants of EX-93 Uno Sissy (pictured below).** And all go back to **Citation Roxy EX-97!**
  - ★ **Jasper (pictured below) is dam, mgd or mggd to many that are selling. EX-93 with EX mammary.** Sons in AI and 50 plus embryos exported overseas!
  - ★ **Lot 1: Nd-Druvale TWT Carli-Red-ET GTPI +2923 PTAT! Born 4/8/23 Reg. #3251679273. She is the #1 Red Twitty daughter and has interest from major AI companies for Red sons! Dam is just fresh x VG-86, x EX-93 x VG-89 x EX-93!**
  - ★ **Lot 2: ND-Druvale TWT Cove-Red-ET. Born 3-11-23, Reg. #3251679268. She is a full sister to Lot 1 and is the #2 Red Twitty daughter!**
  - ★ **Lot 3: Aspiration session from Nd-Druvale Twitty Tierra-ET RC! Reg. #3251679260 GTPI +2927 Ptat. 1.88 Milk +824, +.24F +101 lb., +.06P 44#. Make your own high Red calves with the #3 Twitty in America!**
  - ★ **Lot 7: ND-Druvale Gameday Janie GTPI +2893 PTAT 1.80, Red carrier! Sells just fresh and very fancy! Her calves are being tested for Select Sires! Dam VG x EX-93 x VG-89 x EX-93!**
  - ★ **Lots 8A + 8B: born 5/16/23. Twin Lionel sisters to lot 7. Leawood is RC and GTPI +2769! Lennon GTPI +2734 PTAT +1.89!**
  - ★ **Selling daughters by Ranger-Red, Network-Red, Lucid-Red, Trojon Rc, Haze P RC, Rebel-Red, Rubels-Red, Bomaz Rc, Gameday, Conway, Perfect, and Kahn! Most animals are Red or Red carrier!**
  - ★ **EX-90 Humblenkind sells just fresh, along with her Red Ranger daughter born 1/29/23! Dam EX-93 Jedi x VG-89 Olympian x EX-93 Uno! GTPI +2717 PTAT +2.10.**
  - ★ **GP-84 Crimpton sells w/ Fancy Red daughters by Ranger! Dam EX-93 x VG-89 x EX-93!**
  - ★ **EX-91 Jedi sells due at sale time w/ a fancy, fresh, Red Lucid daughter and yearling Perfect heifer!**
  - ★ **EX-92 Salvatore peaked at 150 lbs. and sells on service to Gameday! Dam and mgd. are VG-87.**
  - ★ **RC Kahn x GP-82 Swingman x VG-85 x VG-89 x EX-93.**
  - ★ **RC Perfect x EX-90 x EX-90 x VG-85 x EX-93.**
  - ★ **Sept. 23 Haze Joyous-Red by Aot Red-eye Haze! Dam VG-85 x EX-93 x VG-89 x EX-93.**
  - ★ **Polled, Red and fancy, ND-Druvale Haze p Honey-Red sells x VG-88 x EX-93!**
  - ★ **2 R&W bulls with high genomics!**
- Also selling exciting consignments from:**
- ★ **Wa-Del Holsteins** - 10 fresh 2&3 yr olds
  - ★ **Joel & Sarah Mills** - 5 fresh 2 yr. olds
  - ★ **Tom Mercuro** - Rae-Mew Shimmer Ruby-Red sells fresh 3/2/24! Dam VG-86 x EX-93 x EX-92 x EX-91 X **Scientific Rubirae Socks EX-93** 5-08 365 43,050 4.2F 2.8P!
  - ★ **Rae-Mew Talon Ruth sells due 3/15/24 w/ 1st calf! Dam EX-91 x EX-93 x EX-92 x EX-91 x EX-93 Socks!**
  - ★ **Rae-Mew Jrdy Rihanna-Red EX-90 sells due in July w/ 3rd calf! Dam EX-93 x EX-92 x EX-91 x EX-93 Socks!**
  - ★ **Rae-Mew D-Lambda Rae Dema sells due 10-9-24 to sexed Dropbox! Dam Scientific Rubirae Socks EX-93!**
  - ★ **Nevin Kuhns 2 head**
  - ★ **Eric Niswander, El-Quest Brooke P-Red sells due 12/28/23 to sexed Tango-Red! Dam EX-92 5-07 352 30,210 5.0F 3.6P X VG-88 x VG-85!**
  - ★ **Easy Girl Faja Frosty born 7/30/23! Dam VG-88 2-02 313 15,510 4.8F 3.8P! Mgd. EX-93 4-05 365 42,480 3.4F 2.9P! Mggd. EX-90 4-00 332 31,290 4.2F 3.1P! 4th dam EX-97 **Harvue Roy Frosty** 5-07 365 44,710 5.0F 2.8P!**
  - ★ **Reg. Chrome Jersey fresh in 2nd lac.!** Dam Andres Sweetheart. Mgd. M-C Tequila Summer - GC Yrlg at Harrisburg.

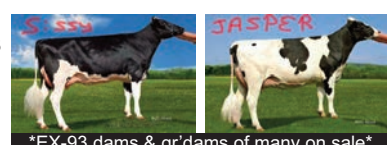


**NOTE: Need that special cow or heifer? This should be the sale! High type, lots of milk, and good genetics all met together to create this opportunity for you! All cattle vet checked and vaccinated. Trucking available. Can't make the sale? You can participate online at [Cowbuyer.com!](http://Cowbuyer.com) For Cowbuyer questions, call Katie Shultz: 717-543-7883.**

Auctioneer/Sale Staff  
Jason Brubacker Lic. AU5608  
717-729-0173

Nolan Druist (Owner)  
814-285-6623

Matt Zimmerman (Ringman)  
717-222-0101



\*EX-93 dams & gr'dams of many on sale\*

Sale Barn  
Ivan Brubacker  
717-414-6657

Pedigrees  
John Burket  
814-381-9070



Catalogs by Daniel Brandt 717-821-1238

**Due to Good Friday (March 29th) we ask that all cattle are picked up sale day or arrangements are made to care for them. Thank-you.**

# BRUBACKER'S QUALITY DAIRY SALES

10 BROWN ROAD, SHIPPENSBURG, PA

Thursday, March 21 @ 10:00 A.M.

## SPECIAL DAIRY COW AND HEIFER SALE

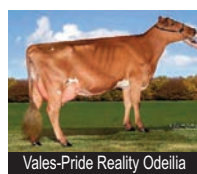
- ★ **Vales-Pride Farm will be having a herd reduction sale due to health reasons.** 30 head of Registered Ayrshires will sell! This includes 18 head of milking individuals (8- 1st lac., 5- 2nd lac., 3- 3rd lac., & 2- 4th lac.). (8 will be selling dry, all due in late May or early June). 4 bred heifers sell. 3 due in August & 1 in October. 2 short bred heifers serviced to Sexed semen for early December. 2 open breeding age heifers, and 4 heifers born June 2023-Sept 2023! Parlor/freestall herd, all cows and bred heifers freestall trained. On DHIA, regular (monthly) hoof trimming schedule and dry treat and vaccinate every cow at dry off.
- ★ **Many family members (including granddaughters and great granddaughters) of Vales-Pride Tri-Magic Gianni EX-91,4E (pictured) with a lifetime record of 252,770m 4.6% 11,636f 3.2% 8063p!**
- ★ **Also many individuals from the "O" family sell.** These would be related to **Vales-Pride Reality Odeilia (pictured)** who did well in the show ring!
- ★ **A daughter and a granddaughter of Mowry's Pluto Patches EX-92,4E EX-94 mammary sell.** Her Radisson daughter sells dry and is due in late May to Topp- glen B Wicked. Her Orlando-P granddaughter is polled and sells shortbred!
- ★ **Vales-Pride Tuxedo Junebug (pictured) sells due in Aug. to Palmyra-Springhill Roar!**
- ★ **Several other breeders are also consigning on this sale, including 2 head from Len-Knoll Farm, 1 from Willow Brook Farm, and 1 from Shir-Lyn Ayrshires! Shir-Lyn Rushmore Dixie sells due 3-23 to sexed Styker! Dam GP-84 5-01 25,340 4.1F 2.6P. Mgd VG-89 10-07 305 20,050 4.7F 2.9P. Mggd EX-93,4E R-Lyn Trident Jodee 7-07 305 24,210 3.9F 3.2P!**
- ★ **5 Jersey cows all recently fresh, from 1 consignor.**
- ★ **Also a nice selection of heifers from healthy calves to close springers!**
- ★ **9 breeding age bulls out of good cow families, including 3 polled Jersey bulls from top genetics!**
- ★ **18 mon. Royal Flush son! Dam EX-92 Sabathia w/ over 29,000 lb. 5.0F! Mgd. EX-93 Gibson w/ over 27,000 lb. 5.1F!**
- ★ **30 SCR Heitime heifer collars sell. Most still have warranty.**



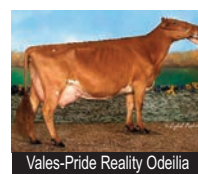
Vales-Pride Tuxedo Junebug



Vales-Pride Reality Odeilia



Vales-Pride Reality Odeilia



Vales-Pride Reality Odeilia

- ★ **We are also expecting a good selection of fresh and fancy 2 and 3 yr. olds out of local overstocked herds and heifer growers.** Mostly AI sired including several good Reg. Holstein cows, with most on test w/low SCC and milking well!
- ★ **Brandt-View sends 5-7 fresh cows w/ deep pedigrees & genomics, milking up to 100 lbs.!!**
- ★ **6 top, fresh and fancy, cows from a high producing herd!** Smashing udders, and good feet and legs, all recently fresh and milking up to 120 lbs. with low SCC! The kind everyone wants!!

**NOTE: Looking to replace some worn out cows with some quality dairy cows? You're looking at the right place! We're getting a great selection of dairy cattle right off the farm. All cattle vet checked and vaccinated. Trucking available. ~ More quality consignments welcome! ~**

**Can't make the sale? You can now participate online at [Cowbuyer.com.](http://Cowbuyer.com) For on-line questions, call Katie Shultz 717-543-7883.**

Manager/Auctioneers  
Jason Brubacker Lic. AU5608  
717-729-0173

Darryl Jones Lic. AU5194  
717-226-0776



Sale Barn  
Ivan Brubacker  
717-414-6657

Pedigrees  
Art Kling

**Join us for our 'Annual Heifer Turn Out Sale' Thursday April 18th, 2024! We will be selling dairy cows, bulls and heifers!**

**S & S SILO SERVICE** - We erect silos, repair silos with shotcrete, repair concrete walls, stone walls, and foundations with shotcrete. Serving the shotcrete and silo industry for 25 years. 610-273-3993.

**MANUFACTURERS** of silo doors and hardware. Double thick tongue and groove cedar poly and plywood doors. Hardware is powder coated. Agri-Door. Call 717-949-2034.

**19 Real Estate**

**FARM FOR SALE** - 158 acres, 100 acres tillable. 37 tie stall barn, 2 sheds. 6 bedroom

house, Somerset Co., Pa. 814-267-3875.

**NORTHERN PA.** year round home with spacial property. Gorgeous mountain views, near State Gamelands and developed bicycle trail. Sits high and dry. 717-856-2024.

**THE GET-R-DONE REALTOR.** Rodney Rice, 717-729-9501. 50 years serving farmers selling, buying, auctioning. Landfarmrec-JAK Real Estate. 717-753-5510.

**TO BUY/SELL REAL ESTATE** in Pa. call Thomas Hershey at 610-209-7096. Hershey Farm Agency, Inc., HersheyAuction-LLC.com. 800-880-3831.

**BEILER-CAMPBELL Realtors** and Auction Services, Farm and Land Division. Are you looking to purchase or sell a property in Pa. or Md. Call Chris Taylor, office mgr., 888-786-8715 for an auctioneer or realtor.ctaylorfarms.com.

**20 Wanted**

**BYRNE** SINCE 1933

**BYRNE DAIRY** is looking to increase their raw organic milk supply. For more information,

contact Bob Bowles at 315-436-0997 or Leslie Ball at 315-382-2782. (4/5)

**STATIONARY VERTICAL TMR** mixer. Prefer 200 cu.ft. or smaller. 315-536-9825.

**BUYING HARVESTOR** silos & Slurrystores. Call 717-517-2080.

**ISSUES OF HOLSTEIN** World, Jersey, Brown Swiss, etc. (all other dairy cattle breeds) magazines, sale catalogs and sire directories. 716-255-5625.

**I AM STILL LOOKING FOR** used books and publications about dairy farming, printed early to late 20th century. Interested in all farming related topics. Paying cash. Phone Owen Backus, 608-479-0811.

**I BUY TRUCKER HAT** collections. 215-896-5609.

**21 Opportunities Wanted**

**YOUNG FARMER** looking for a dairy farm to rent. Ideally rent to own situation in Pa. or Md. 717-824-1320.

**OLDER MAN SEEKS** part time/full time work on farm with on-farm housing or nearby. Prefer Franklin Co. area or nearby. Consider other areas. 717-816-9693.

**INDIVIDUAL SEEKING** herdsman position or looking to rent approx. 50 cow dairy farm. 814-442-5782.

**24 Seeds**

**ALFALFA, GRASS MIXES,** oats and sorghum. Hefty brand and Augusta seed corn. Jacobsen GT soybeans. Leabrook Ag, call us at 717-898-9576.

**NEED SEED OATS?** We can obtain almost any variety. Also publish quarterly oat marketing newsletter. \$12/ year. J.C.

Goss, Box 312, Hurlley, MO 65675, 417-708-7860.

**KING'S AGRISEEDS,** feeding your farm's future through high energy forages, and soil building cover crops. Lancaster, Pa. 717-687-6224, info@kingsagriseeds.com, www.KingsAgriSeeds.com.

**CORN SEED. PRICING** starting at \$129/bag (before discounts). De Dell Seeds, the leaders in Non-GMO corn. 519-264-CORN.

**ALFALFA, CORN, SOYBEANS** and more! Call us for all of your crop needs. Growmark FS-Eighty Four. 724-222-4303, www.growmarkfs.com.

**TRY THE NEW WINNER 2015** World Forage Analysis Superbowl - Alforex Hi-Gest 360 Alfalfa, cutting edge digestibility. Hess Farm Supply 717-354-9492.

**SEED CORN** - Partners brand, Mid-Atlantic, Prairie Hybrids. Lots of customer satisfaction. Dairyland hybrid alfalfa's quality yield digestibility. Oregon AG, 717-656-0067.

**HUBNER SEEDS** - Alfalfa, Corn, Soybeans, call Merle Stoltzfus. 717-224-0700.

**APPLY AGROWSIL TODAY** Quick and long lasting PH increase, increased yields, soil nutrient release, disease and stress tolerance, and drought tolerance. 1-800-850-0527.

**25 Miscellaneous**

**INTERESTED IN READING?** 200 Brown Swiss Bulletin magazines from 1970s to early 2000s. Also, Hoard's Dairyman, Successful Farming and other misc. magazines. Make offer. 717-529-2326, ext. 1.

**STOP FLIES. GREAT** products. Fly parasite plans. Cedar solar traps (the best). Zapper that just keeps zapping. www.dairyflyparasites.com. 888-771-3276. Useful Farm Products.

**LOOKING TO GET RID** of insects? Buy bluebird or tree swallow houses. Plus more. 717-529-2326, ext. 1.

**CLEANING OUT YOUR** attic? We'll take any magazines, newspaper, books, etc. for old man to shred for horse bedding. Call now. 717-529-2326, ext. 1.

**SEE FARMING IN N.Y.** through the eyes of an 11 year old. Visit Youtube and search "4th Gen Dairy Farmer" for videos. Call 716-474-1705 for more information.

**HORSE, DONKEY AND** calf blankets. Reasonably priced. Dealers welcome. Call 717-361-4474.

**LIGHT UP YOUR BARN** with custom made clear poly carbon doors. Also custom manufacturing and repair. Jonas King, 3451 Sunnyside Rd., Manheim, Pa. 17545. 717-361-8853, ext. 4.

**POLY SILO DOORS** - Steel horse hitches; pine shavings; pine bedding pellets; Meadow Springs Farm, Gordonville, Pa. 717-768-3337, ext. 1.

**PAINTED MILK CANS** - farm scenes \$200 or have one custom painted with cows, horses or any family pet. Carroll County, Md. 410-259-1276.

**OLD AERIAL PHOTOS** of your farm or home dating back to 1963. Nathan Lewis 888-402-6901 or vintageaerial.com.

**27 Livestock**

**ANGUS BEEF, READY FOR** slaughter. 570-488-6596.

- Millville Area / Columbia County -

# Stoltzfus FARM AUCTION

**46 Hd. Cert. Organic Holstein Herd**  
**19 Horses - 2 Mules - Power Unit - Farm Equip.**  
**Silage - Hay - Ear Corn - Bandmill - Construction Tools**  
**Tuesday, March 19 @ 9:00 a.m. (D.S.T.)**

**Location: 87 Bald Hill Rd., Millville, PA 17846 (Columbia Co.)**  
Directions: From Millville take Rt. 254 east approx. 4 mi. Turn left onto Eagle Rd., follow approx. 3 mi. Turn left onto Bald Hill Rd. Go 1/2 mi. to 2nd farm on left.

**19 Horses - 2 Mules**

**Selling for Stephen:**

- Flash:** 13 yr. old, 16.2H spotted draft mare. Jockey horse

**Selling for Others:**

- Archie:** Coming 2 yr. old Reg. Percheron stud foaled 5/9/22. Dam is Johnharts Anna x Pleasant View King.
- Colton:** Coming 2 yr. old Reg. Percheron gelding foaled 5/20/22. Dam is Triple J's Miss Cora x Triple J's Kings Colonel. **The above 2 are half brothers. Sired by Bee-Havens Karson x RRA's Jadis Yankee x Windmere's North American Maid.**
- 1 pair 2 yr. old Belgians
- (2) Belgain colts
- 2 yr. old Reg. Percheron mare
- 11 yr. old Percheron x Morgan Mare
- 12 yr. old Percheron x Friesian x Morgan Mare
- Smoothmouth Morgan cross gelding
- 5 yr. old Standardbred x Morgan mare. Hot driver. Horseman's horse. Doublegaited. Ready for miles. TSS
- 19 yr. old Reg. Arabian stud. Anyone can drive. Fancy. Ready for miles. TSS.
- 3 yr. old Percheron cross mare. Green broke. Drives single
- Chief: 15 yr. old Belgian gelding. Lines or jockey. Used to clean gutters.
- 19 yr. old spotted draft mare
- Coming 2 yr. old Percheron x Morgan filly. Black/white speckled. Halter broke. Her dam is a go-getter on road & field.
- Coming 2 yr. old black Standardbred x Morgan gelding. Halter broke.
- 1 pair smooth mouth mules. Can work all day. Super good broke for produce farm.

**Nolt's raised bed plastic layer;** Mc #9 ground drive mower; Flat wagon; Market wagon; Shovel harrow; 42" x 10' feed trailer w/42" sides & tailgate

- ORGANIC HAY, EAR CORN & SILAGE -

1500 small bales dry hay; Approx. 40 ton ear corn; Approx. 60 tons corn silage (processed); **All Certified Organic**

- MISC. FARM RELATED -

(2) Agriplastics calf hutches; 3 rd. bale feeders; 3 compartment mineral tub; NI 323 1 row picker for repair or parts; 4 milkers w/Oriber 350 claws. Westfalla pulsators and 55 & 65 lb. buckets; (2) 75 lb. & (1) 35 lb. buckets; 15" SS 6 port Bender washer; 23" SS washer tub; Rheem 40 gal. LP water heater (new in 2016); Hog farrowing crates; Mesh horse stall doors; Misc. steel wheels; Double angle 540 gear box w/7 1/2" x 17 1/2" flat belt pulley; Sunset 700 gal. SS storage tank; Stock tanks; **Georgetown 52" portable fan w/hyd. motor;** Greenhouse stove; Fuel tank; Hitch eveners; 2 leather pony harnesses; Spreader web for NI 12 or 12A (low wear); McCormick ground drive mower parts; 50' hyd. hose set; 2' x 5' welding table w/bench vise; Poly wire fencing, posts & supplies; Shop hoist; Shop press; Craftsman tool chest; Sisal rope; Wooden pulley; Bradley Economy cream separator; Antique wall mount hand crank drill press.

- NORWOOD BANDMILL - CONSTRUCTION TOOLS -

**Note: Selling for Amos Zook. He is discontinuing construction. Many of the items are in good, nice condition. These items will begin selling at 9:30 w/2nd auctioneer. Norwood Lumbermate 2000 sawmill w/13HP Honda;** Morso wood trim cutter; Grizzly 1/2" shaper (no motor); JET table saw w/air motor; Tablesaw w/hyd. motor; Belsaw 12" planer w/hyd.; Gondola store shelving; Mud mixer w/9HP Honda; Screenshot Demon 12" power screed; Stone power troweler; Bull float kit; 4 sets Werner pole jacks w/extra feet and braces; (2) 12" and (2) 6" poles; Mark II Trimmer 10'6" heavy duty trim brake; Trim cutter; Jamesway slitter; J-Air 16 gal. air compressor w/Honda eng.; J-Air 9 gal. air compressor w/Honda eng.; (2) 100 lb. surge tanks; 300 gal. air tank; Air hoses; Paslode nailers; Screw guns; Air tools: Dewalt 7 1/2" circular saw, Makita 7 1/4" circular saw, Makita 16" circular saw, sawzall, sanders, grinders; Dewalt sliding compound miter saw w/air motor; Oscillating multi-tool; Jigsaw; Dewalt miter saw w/Stihl eng.; 7 1/4" circular saw w/engine; Hammer drill w/engine; Redmax gas sawzall; Stihl 14" cut-off saw; Spectra rotary laser package; Dewalt pointer laser; Dewalt vertical/horizontal laser; Swenson 36" metal panel shear; Shingle rippers; Shingle jacks; Shingle cutter; Shingle nailers; 32', 28' and 24' extension ladders; Extendable scaffold planks; Ladder jacks; Levels; **Handi-Square 8 pc. footer square kit;** Saw horses; Pallet jack; Oregon chain saw sharpener; 12 ton hyd. pipe bender; Snow Defender SS snow stops; Alum. & steel trim coil; Asst. steel roofing & siding & trim; Asst. screws

- AUCTION INFO -

**Join us for this Auction at the Stoltzfus farm. Stephen & Sarah are discontinuing the dairy farming to pursue produce farming. Also selling items from others. We will be selling w/2 auctioneers. Ring 1 will begin at 9:00 Sharp (daylight savings time) w/ misc. farm related items. Ring 2 will begin approx. 9:30 w/Construction items from Amos Zook. Hay, corn & silage sell approx. 11:00, followed by Farm Machinery. Horses approx. 12:00. Dairy Herd last approx. 1:00. Auction Co. and sellers are not responsible for accidents. Auction day announcements take precedence over all advertising. Payment terms: cash, approved check or credit card w/ 3% fee. Food Stand on premises. **We will accept absentee bids for this auction. CALL Tim before sale day to arrange. No Phone service day of auction.****

Auction for:  
**Stephen S. & Sarah Stoltzfus**

**Tim Weaver AUCTION SERVICE**  
717-354-9524  
Honesty • Integrity • Commitment

**Power Unit** w/JD 4039 4 cyl. dsl. w/turbo, Tayloria 540/1000 PTO clutch (on 2 whl. chassis)

- FARM MACHINERY -

JD 7000 4R x 32" planter w/dry ferti., no-till coulters & 5 1/2 HP Honda w/hyd. unit; 12' weeder w/seat & long tongue (new in 2013); 1 older 12' weeder; McCormick 2 way sulky plow w/14" bottoms; 10' harrow; I & J 2 row cultivator; McCormick 1 row cultivator; McCormick corn binder w/narrow alum. loader & 9HP Honda w/hyd. for loader; NI 323 1 row picker; (1) Killbros and 2 other gravity wagons; Artsway 425-C grinder mixer; 120 gal. sprayer w/27' booms, long tongue & Robin eng.; Auto-turn forecast; **ELS SBR37A semi-liquid spreader (v.g. cond. - New Oct. 2023);** Chicken litter spreader w/24" web & 2 spinners; **Lancaster 50 bu. manure spreader w/poly floor (good cond.);** NH 56 rake w/22" whls; 8' chisel harrow w/trip; New Idea corn sheller; Small farm wagon; **BZ 3' basket harrow;**

**Auctioneer:**  
Tim Weaver 717-354-9524  
Dave Stoltzfus 717-768-7526  
Lic. # AY2109

Steve Schuler 717-666-4381  
Matt Martin 717-738-0328  
See more @ auctionzip.com, ID#25403

"Mifflin County, PA"

# FARM MACHINERY AUCTION

**Tue. March 26, 2024 @ 9:30 A.M.**

**424 Barrville Rd. Belleville, PA.**  
Directions: Rt. 322, take Rt. 655 South 3mi. Turn right onto Barrville Rd. Go 8/10th mi. to auction on left.

**TRACTORS:** JD 6110 4 wd, CAH, 16 spd. power quad, 2,628 hrs., sells w/ 640 loader; selling separately is pallet/bale forks; JD 7600 2wd, CAH, 4699 hrs; JD 1520 diesel, hi-low, 2 post canopy, 5,695 hrs.

**SKID LOADER:** NH LS160 cab, power-tach, 3,675 hrs.

**COMBINE:** JD 6620 sidehill, 2 wd, bin ext. straw chopper, hrs?, good working cond. (heads sell separately); 643 6 RN corn head, low tin, oil bath w/ EZ Trail header cart, 216 flex grain head; 6 row down corn reel.

**HARVESTING:** JD 3975 harvester, KP, Iron Guard, cantilever auger- nice; (heads sell separately): 2 RN corn head, 7' hay head w/ dollies; JD 3950 forage harvester; JD 328 baler w/ 40 kicker; JD 430 round baler, twine; JD 946 disc bine, rubber rolls, 2 pt. hitch; JD 300 2 RN corn picker; Vermeer TE170 4 star tedder, hyd fold; Miller Pro 7914 merger, reversible belt; 2- Pequea 786 Hay Maker inverters- one as is; Pequea 710 pto tedder; MF 5 wheel pull rake; JD 1018 10' offset rotary mower; IH 12' stalk shredder; IH 3 pt. 7' dyna bal. sickle bar mower; Victor 200 11 forage blower; **Kewanee 500 30' corn/bale elevator;** Little Giant corn drag elevator; Westfield 70 WR80-26 transport auger, 8"x26' w/ elec. motor; 2 stage grain cleaner w/ elec. motor; Miller Pro 5300 forage wagon, 16', roof & tandems; 3- Gehl 980 forage wagons, 1- 18', 2- 16', all w/ tandems & roofs; 20' big bale wagon; 2 steel rack wagons, 1- 8'x18', 1- 8'x20'; 18' wooden rack wagon; 2- Country Boy bin wagons- approx. 225 bu.

**TILLAGE / PLANTING:** Inter Seeder 2 pt. hitch w/ dollies- can be used as 6 row inter seeder or 12' no till drill, has nitrogen & herbicide tanks; Case IH 5100 grain drill 7x18, grass box; White 435 11 shank pull disc chisel; JD 726 soil finisher 18 1/2', hyd. & C springs on disc; 13' custom built vertical till built on JD 550 Mulch Master frame; JD 400 3 pt. 15' rotary-hoe; Dunham 12' cultimulcher; 1,100 gal. nurse tank.

**MANURE EQUIP.:** Knight Protwin 8018 side sling manure spreader; N.I. 3632 manure spreader, top beater; Houle 18-L-AP 6"x42' lagoon pump, 540 pto; transport fill pipe 8"x25' w/ 6" adapter; 13' custom built manure incorporator.

**MISC. EQUIP.:** Katolight 50 KW pto generator on cart; Cattle trailer custom built 5 1/2'x12'- no title; 16' dump rock trailer; Miller Pro 5100 18' forage wagon used for sawdust, rear unload; 12 ton wagon gear; JD 240 QA loader; Poly 8 ton feed bin; 30 gal. reserve applicator; Agri Tronix HT-PRO hay probe; Swisher 44" pull mower w/ 12 hp. Briggs.; **Homemade chicken coop on wagon gear.**

**TRUCK:** 1982 IH S1700 13' grain dump, single axle, gas, 25,000 gvw, farm tags.

**MILKING EQUIPMENT:** (offered w/ reserve) Dairy Kool DKF 1500 gal milk tank w/ 2 compressors; Unico E180 190 ga. milk tank, no comp.; Westalia 5hp. vac pump w/ tank; 2" SS pipeline for 50 stalls; 6 - Westfalla Stimopuls MA milkers, take offs.

Auction begins w/ one wagon load smalls, tools, shop / farm hardware, etc.

**Terms:** Cash, check, also credit card w/ 3% fee. Lunch stand.

Note: Most of this equipment is shed kept & field ready.

See photos @ www.MoreAuctionInfo.com

**Can't Make the Auction?**  
Online Bidding for Larger Items @  
www.EquipmentFacts.com.

**50 Years**  
**MARTIN'S AUCTION SERVICE**  
Nevin, Andrew, Victor, & Gordon Martin  
Andrew - 717-815-1809 / Victor 717-658-9930  
Email: Info@MartinsAuctionService.com / Lic# 2826L  
\*\* 1972 - 2022 \*\*  
Thankful to God & Our Customers for 50 Years of Auctions!









**Auction For:**  
**David & Leon Hostetler**  
717.994.0299 - David  
717.250.5971 - Leon

# Lancaster and Susquehanna County teams top PJHA Dairy Bowl competition

SCRANTON, Pa. — The Pennsylvania Junior Holstein Dairy Bowl Contest was held during the state Holstein convention at the Hilton Scranton with 29 teams competing in two age divisions; 16 in the junior division and 13 in the senior divisions.

In the senior division, the team from Lancaster County made up of Madelynn Hoffman, Jacob Bramm, Alexa Hoffman, and AJ Wanner and coached by Psuche Hoffman, Madison and Tammy Weaver, and Amber and Betsy Pownall won the contest. To win the title, they defeated the team from Centre County made up of Alex Coursen, Kristen Whitehill, Faith Wolfe, and Jordan Anderson. They were coached by Dr. Bob Cloninger.

In the junior division, the A team from Susquehanna County made up of Madison Soden, Aiden Empet, Ian Briechle, and Selah Lewis



Left to right: Ian Briechle, Aiden Empet, Selah Lewis, Madison Soden and Michelle Kowalewski, coach.



Seated, left to right are Alexa Hoffman, Jacob Bramm, AJ Wanner and Madelynn Hoffman. Coaches stand, left to right: Amber Pownall, Psuche Hoffman, Tammy Weaver, Betsy Pownall and Madison Weaver.

won the contest. They were coached by Michelle Kowalewski and defeated a Centre County team in the finals round. This team consisted of Luke Tanis, Kimber Hough, Savilla Zimmerman and Jackson Cloninger. They were coached by Dr. Bob Cloninger and Matt Boop.

The winning teams will represent Pennsylvania in the National Holstein Dairy Bowl Contest to be held during the National Holstein Convention in Utah in June.

Planning on replacing an existing roof or constructing a new building?

**THINK LIFETIME**  
**THINK METAL**

Martins Roofing • 717-532-3460  
260 Walnut Bottom Road • Shippensburg, PA 17257

**WE'RE HIRING!**

**Reproductive Services Specialist (A.I. Technician) in Lancaster County, PA**

**DUTIES:** Perform heat detection, artificial insemination service, record keeping, & repro analysis for dairy & beef herds.

**FOR MORE INFO:** Contact Dave Miklic (717-603-0916, dmiklic@premierselect.com) or visit [premierselectsires.com/job-category/employment](http://premierselectsires.com/job-category/employment)

## HERD REDUCTION SALE

**SATURDAY, APRIL 6, 2024 – 11 A.M.**  
Sale held at the farm - 436 Chyle Road, Richfield Springs, N.Y. 13439

**\*Reg. Holsteins since 1926 \*30 Year PBR Herd \* NYS Master Breeder \* Robert "Whitey" McKown Master Breeder Award \*NYS Super Milk Award Recipient \* BAA 110.5 RHA 23323 4.4 958 3.4 738 ave. 73# /day.**

**We will be selling over 100 lots – with over 55 R&Ws! There will be something here for everyone – Cows are in all stages of lactation, recently fresh heifers, calves & embryo lots. There will be a group of March calves to select from and show-age cows & heifers from these great pedigrees. This is a tiestall herd that goes out daily and fed TMR & hay. Heifers are raised in a freestall. Many sell from great foundation cow families like Roxy, Elegance, Star Lulu, Delilah, Toby, Blackrose plus many more. Just a sample of what to expect:**

*She sells in milking form!*

**Ovaltop Warrior Ripley-Red EX-91 EEEEE 3Y**  
HM Jr. All-American R&W Fall Yrlg. & 3rd at WDE 2022  
HM All NY Fall Yrlg; Res Jr. All NY 2022 1st Sr. 2yr. NYS Fair 2023  
Embryos sell x Altitude & her Fancy Winter Calf x Altitude. Ripley is fresh in Dec. Dam: VG-88 Contender, 2D: Ovaltop Realty Robin-Red-ET EX-90 6Y - was Nom. All-Am Best Three 2021, 2X Nom AA 125,000 lb. Cow 2019, Aged Cow 2018; next nine dams are EX back to Roxy. Over 32 head sell that go back to the Roxy's.

*She sells!*

**Ovaltop Jordy Rojo-Red EX-92 EEEEE 4Y**  
2-11 365 30,860 3.8 1175 3.0 919  
Jr. All-American R&W Jr. 3Y 2022  
Rojo shows as a 5 yr. old this year, fresh in Sept. and on service to Heat-wave. Dam: VG-88, next 10 dams EX back to Roxy's. Also her fancy VG-85 2Y x Unstopabull will sell fresh again at sale time.

**Ovaltop Barbwire Spark-Red 2E-92 EEEEE 6Y**  
5-05 309 23,930 4.1 981 3.3 792  
Jr. All-American R&W Jr. 3Y 2018  
All-Am Spring calf & 1st WDE 2015  
From the Brigeen Shamrock Sallie 3E-94 (show winning) family. Selling VG-86 2Y x Analyst, two heifers x Unstopabull & Warrior and fancy gr<sup>d</sup> dtr x Showtime.

**Ovaltop Ladd P Ranait-Red 2E-94 EEEEE 6Y**  
6-00 365 31,500 3.9 1240 3.1 976  
Selling embryos x Altitude & Heat-wave. Nine daughters sell (some polled) by Cheerful & Warrior.

*She sells!*

**Ovaltop DBack Deb-ET EX-93 EEEEE 5Y**  
4-02 294 28,870 3.7 1027 2.9 827 inc.  
Deb is due 9/1/24 to Fitters Choice. D: Arethusa Windbrk Dallas-ET 2E-91, 3D: Arethusa Goldwyn Diana EX-94, 4D: Cherown SY Delilah 4E-96. Her yrlg dtr. (potential 5th gen. EX) also sells x Warrior and a VG-86 (potential 4th gen. EX) Diamondback from the same family.

*She sells!*

**Roedale S Fantasia-ET 5E-95 EEEEE**  
8-08 365 37,562 3.3 1239 2.6 970  
LT 240,460 7787F 6557P  
HM & Best B&O 125,000 lb. cow 2011  
Three family members sell – "Fillusion" sells fresh - 2Y x Denver - potential 6th gen. EX, 3D: Fantasia. "Fattima" VG-87 @ 3Y x Chief, 3D: Fantasia. "FollowOn" GP-84 @ 2Y also sells fresh 4D: Fantasia.

**Beaver-Top RB Terri-Red-ET 3E-91 EEEVVE 9Y**  
8-02 340 30,210 3.8 1142 3.3 984  
Selling her R&W dtr. "Taylor" shows as a Sr. 3, EX-90 @ 3Y x Unstopabull. Taylor has embryos also x Tango. Next dam 2E-94, 3D: VG-89, then next six dams EX back to the EX-92 Winsondale TT Truina family.

**Ovaltop Doorman Elisa-ET EX-93 4Y EEEEE**  
3-11 305 22,816 3.8 872 3.1 700  
Next six dams: Ovaltop Dundee Ester 4E-94 @ 14Y, Ebony 3E-90, Equity VG-86, Ridgedale Estelle 3E-95, Ridgedale Fond Example 3E-95, Ridgedale Quality Extra EX-90. Don't miss Elisa's dtr. "Ellen" x Select VG-85 @ 1-10 fresh in Dec. and is the Jr 2Y for 2024! And a Diamondback 2Y that sells on service. Eight family members sell.

*She sells!*

**Ovaltop DBack Deb-ET EX-93 EEEEE 5Y**  
4-02 294 28,870 3.7 1027 2.9 827 inc.  
Deb is due 9/1/24 to Fitters Choice. D: Arethusa Windbrk Dallas-ET 2E-91, 3D: Arethusa Goldwyn Diana EX-94, 4D: Cherown SY Delilah 4E-96. Her yrlg dtr. (potential 5th gen. EX) also sells x Warrior and a VG-86 (potential 4th gen. EX) Diamondback from the same family.

*She sells!*

**Roedale S Fantasia-ET 5E-95 EEEEE**  
8-08 365 37,562 3.3 1239 2.6 970  
LT 240,460 7787F 6557P  
HM & Best B&O 125,000 lb. cow 2011  
Three family members sell – "Fillusion" sells fresh - 2Y x Denver - potential 6th gen. EX, 3D: Fantasia. "Fattima" VG-87 @ 3Y x Chief, 3D: Fantasia. "FollowOn" GP-84 @ 2Y also sells fresh 4D: Fantasia.

*She sells!*

**Beaver-Top RB Terri-Red-ET 3E-91 EEEVVE 9Y**  
8-02 340 30,210 3.8 1142 3.3 984  
Selling her R&W dtr. "Taylor" shows as a Sr. 3, EX-90 @ 3Y x Unstopabull. Taylor has embryos also x Tango. Next dam 2E-94, 3D: VG-89, then next six dams EX back to the EX-92 Winsondale TT Truina family.

*She sells!*

**Ovaltop Doorman Elisa-ET EX-93 4Y EEEEE**  
3-11 305 22,816 3.8 872 3.1 700  
Next six dams: Ovaltop Dundee Ester 4E-94 @ 14Y, Ebony 3E-90, Equity VG-86, Ridgedale Estelle 3E-95, Ridgedale Fond Example 3E-95, Ridgedale Quality Extra EX-90. Don't miss Elisa's dtr. "Ellen" x Select VG-85 @ 1-10 fresh in Dec. and is the Jr 2Y for 2024! And a Diamondback 2Y that sells on service. Eight family members sell.

**Watch next week's ad for more sale highlights! Mark your calendars... an opportunity like this does not come your way often!**

View and bid online in real-time at [www.cowbuyer.com](http://www.cowbuyer.com). Must be pre-approved.

**Howard W. Wolfe & Family**  
436 Chyle Rd., Richfield Springs, NY  
Howard & Ginny 315-858-2882  
Doug 315-717-2612  
Mike & Monica 315-717-8478  
[www.ovaltopholsteins.com](http://www.ovaltopholsteins.com)  
ovaltop2@gmail.com

**Sale Staff:**  
Tom Hosking Auctioneer 607-972-1771  
Dan Hosking Auctioneer 607-972-8773  
John Burkett Pedigrees  
Daniel Z Stotzfus ..... 717-283-7282  
Adam Liddle ..... 518-361-9946  
Jason Pullis ..... 315-794-6737  
Luke Pullis ..... 315-263-7422  
Brad Ainslie ..... 315-251-0284  
Cyrus Conard ..... 518-369-3389  
David Reynolds ..... 717-321-4011  
Jason Lloyd ..... 518-231-1731

**Catalog request:**  
Call Hosking Sales 607-847-8800 or Brenda 607-972-1771 or email us: [sales@hoskingsales.com](mailto:sales@hoskingsales.com). Watch our facebook page for updates.

## WHITE WASHING with ADVANTAGE FARM WHITE

- Dries White • No Wet Floor
- Is Compatible With Disinfectant And Fly Sprays
- Does Not Rub Off Easily
- Washes Off Windows And Pipelines Easily

**BARN CLEANING SERVICE AVAILABLE WITH COMPRESSED AIR**

To have your barn cleaned with air it will clean off dust, cobwebs and lots of the old lime. This will keep your barn looking cleaner and whiter longer.

**CALL US ABOUT ON THE FARM FLY CONTROL**

Serving Southeastern Pa. And More

## Beitzel Spraying

Witmer, PA 17585 • 7:00 A.M. to 5:00 P.M.  
717-392-7227 or Toll Free 1-800-727-7228  
CERTIFIED COMMERCIAL APPLICATORS  
LICENSED 45 YEARS EXPERIENCE INSURED

*Radio Dispatched Trucks*  
**Barn Spraying Is Our Business Not A Sideline**  
Spraying Since 1961

SALE MANAGED BY:

**Tom & Brenda Hosking and Family**  
6071 State Hwy. 8, New Berlin, NY 13411  
Phone: Tom 607-972-1770 | Brenda 607-972-1771 | Dan 607-972-8773  
[www.hoskingsales.com](http://www.hoskingsales.com) • Like us on facebook

COMPLETE AUCTION SERVICE

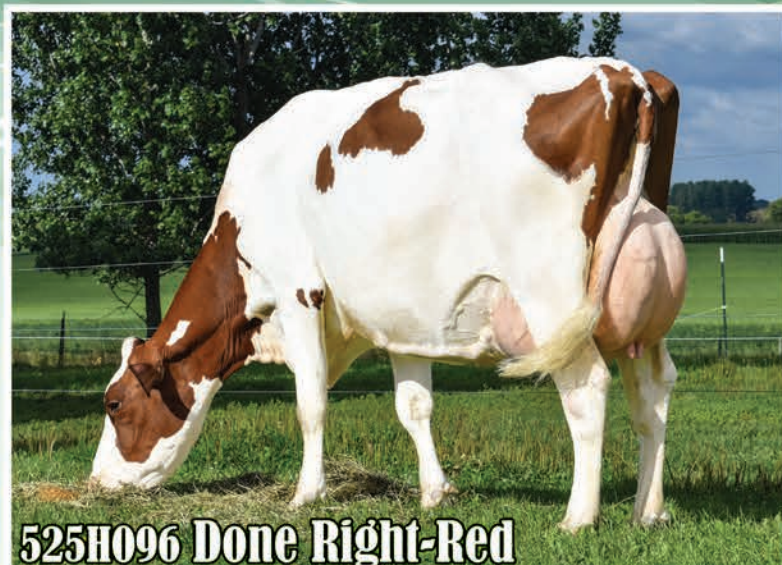
# Proven Performance!



**525H0122 Forrest**

Dairy Strength, Outcross blood  
aAa: 261453 | Fat: +.09% | A2/A2

Forrest Daughter:  
**EX-90 3yr, Proj. 26,071 lb**  
Owned by Dean Jackson, PA



**525H096 Done Right-Red**

Moderate size, Longevity | Polled  
aAa: 516342 | Fat: +.10% | A2/A2

Done Right-Red Daughter:  
**2nd Lact. Milking 114 lb/day**  
Owned by Wayne Zimmerman, WI



**525H0132 Felon**

Awesome frames, High butterfat  
aAa: 216435 | Fat: +.25% | A2/A2

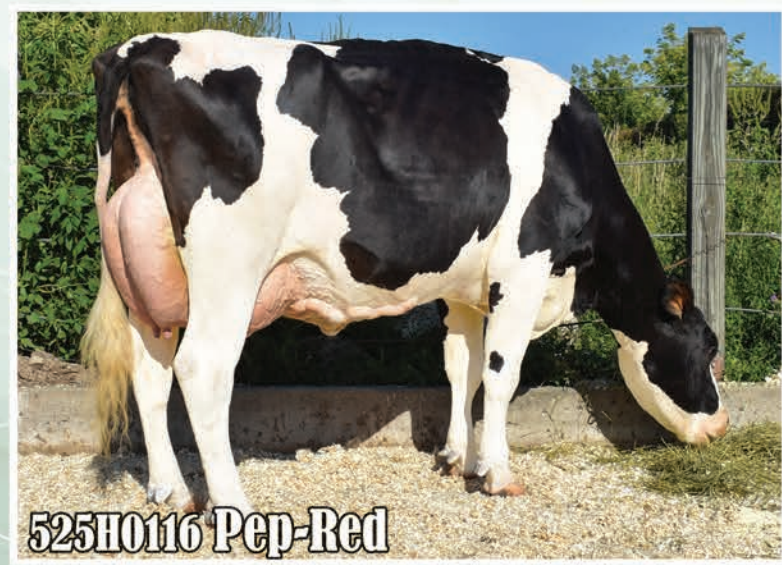
Felon Daughter:  
**GP-83 2yr, Proj. 25,560 lb**  
Owned by LeRoy Hoover, PA



**525H0131 Lion King**

Dairy Quality, Open & Wide  
aAa: 312546 | A2/A2

Lion King Daughter:  
**VG-85 2yr, Proj. 27,623 lb**  
Owned by Warren Good, Bethel PA



**525H0116 Pep-Red**

Wonderful Type & Udders  
aAa: 516342 | Protein: +.05%

Pep-Red Daughter:  
**EX-90 3yr, Proj. 30,295 lb**  
Owned by Dan Vandertie, WI



**525H0129 Black Eagle**

Improves Feet & Legs, adds style  
aAa: 624153 | Fat: +.08%

Black Eagle Daughter:  
**GP-83 2yr, Proj. 21,866 lb**  
Owned by Neal Martin, Ephrata PA



**1-855-955-2100** | [sales@triplehilsires.com](mailto:sales@triplehilsires.com)

[Triplehilsires.com](http://Triplehilsires.com) | Follow us on Facebook

**Exclusive Distributor for Masterpiece Genetics**