

FARM SHINE

We rise every week to cover farmers and agribusinesses



Farmshine • Volume 45, Number 29 • \$20 one year

Mailed the day before →

March 22, 2024

Roadmap for abuse

By SHERRY BUNTING
Special for Farmshine



Mark Uyeda,
SEC Commissioner

WASHINGTON, D.C. — Even the Securities and Exchange Commissioner, himself, appointed by President Biden and confirmed by the U.S. Senate, wrote a "dissenting statement" on March 6 after the ESG climate disclosures final rule was announced. He describes even the dialed-back final rule "a roadmap for abuse."

Below are the first three paragraphs of SEC Commissioner Mark Uyeda's dissenting statement that should give us all pause on where the climate 'agenda' is headed – incrementally through backdoors everywhere.

"(In the March 6 final rule) much emphasis will be placed on how this rule has been dialed-back from the proposal, is focused on providing material information to investors, and that the Commission is not a climate regulator. To that, I emphasize the advice that I give to would-be investors: Do not rely on the marketing materials and read the prospectus instead. By the time you finish reading all 886 pages of today's release, you will conclude that this rule is climate regulation promulgated under the Commission's seal.

"(This) rule is the culmination of efforts by various interests to hijack and use the federal securities laws for their climate-related goals. In doing so, they have created a roadmap for others to abuse the Commission's disclosure regime to achieve their own political and social goals.

First, they purchase shares in public companies under the guise of becoming "investors," but not with the primary intention of seeking financial return. Rather, they use their holdings as a means to force companies to disclose information related to political and social issues important to them but that may not be relevant to those companies' business or shareholders generally.

After some companies capitulate to their demands, they ask the Commission to adopt rules requiring the disclosure from all companies.

"Citing such 'investor demand' for the information and the need to have 'consistent and comparable' disclosure, a politically-oriented Commission might pursue such a rulemaking. If it does, then the result is using disclosure not as a tool to aid investors, but to bypass Congress to achieve political and social change without the corresponding accountability to the electorate."

Read SEC Commissioner Uyeda's full statement at <https://www.sec.gov/news/statement/uyeda-statement-mandatory-climate-risk-disclosures-030624>

SEC final rule ditches Scope 3 reporting

Methane math matters: Will cows get the 'stick' after billions of dollars are spent in 'carrots'?

By SHERRY BUNTING
Special for Farmshine

WASHINGTON, D.C. — After two years of pushback under threat of legal challenges, the Securities and Exchange Commission (SEC) voted 3-2 on March 6 to remove Scope 3 greenhouse gas (GHG) emissions reporting requirements in its final climate disclosure rule.

The good news for farmers is that mandatory Scope 3 is off the table – for now – everywhere, except in California. The final rule also dialed-back some of the reporting requirements for Scopes 1 and 2. Despite these limitations compared with what was earlier proposed, the final rule and its rapid timeline for implementation set a major precedent into uncharted territory for the SEC as purveyor of the climate agenda. The Commission vote to approve was tight, and even the Commissioner called the rule "a roadmap for abuse." (See sidebar about his dissenting statement to the left of this article.)

Scope 1 emissions are what a company directly controls. Scope 2 are the indirect emissions of a company from its purchased energy. Scope 3 encompasses the indirect upstream and downstream supply chain GHG emissions.

Mandatory Scope 3 reporting would have seriously burdened U.S. farmers and ranchers, notes Travis Cushman, American Farm Bureau's Deputy General Counsel for Litigation and Public Policy.

It would have required publicly-traded and invested companies – including lenders – to report to the SEC the GHG emissions throughout their supply chains, not just the emissions these companies control.

This would have required farms to constantly track seven different types of GHG emissions as suppliers upstream from processors and retailers and as consumers of credit terms downstream from financial institutions. For example, dairy farmers would have been forced to report this for every hundredweight of milk leaving the farm.

In addition to pushback from farm organizations, no-



The question is, how will methane emissions in cow burps and manure be scored? New programs are being launched, and more are on the way.

Photo by Sherry Bunting

tably American Farm Bureau, other business sectors also took issue with the proposed rule, contending that full supply chain disclosures would be challenging to calculate for suppliers and vendors.

The final rule also limits the reporting for Scopes 1 and 2 to larger companies that have GHG disclosures to investors. Those companies will still have to provide independent 'assurances', including the environmental portion of ESG criteria some investors are using. However, authenticity can be 'assured' by specialists as 'independent gatekeepers.' The final rule does not require verification by auditors.

Meanwhile, the dairy industry, itself, has been moving full-steam-ahead on Scope 3 reporting – ever since DMI announced the Net Zero Initiative in 2019 – and even before that through the Innovation Center for U.S. Dairy, which has focused on aligning the industry's collective sustainability goals with

the 2030-50 GHG reduction targets of global processors.

Organizations, cooperatives and processors are already positioning various programs, platforms and databases as 'gatekeepers' for scoring GHG emissions on dairy farms, especially methane, at the single farm and regional milk source levels.

These are described as voluntary, industry-led or producer-led platforms, and they essentially do what the SEC tried to do with its earlier proposed rule.

These voluntary platforms include the FARM Environmental Stewardship (ES) module, which is rolling forward. Once these voluntary programs involve third-party verification and are linked informally to milk contracts – like the FARM program already does with animal care – the voluntary status becomes essentially mandatory in terms of milk market access.

Scope 3 reporting remains a key part of the DMI Net Zero Initiative through FARM ES. Large global dairy processors like Nestle, Danone, Unilever and others are banking

turn to page 4

PERIODICAL • DO NOT DELAY

97 Milk's dynamic duos	3	DHIA reports	8-11
All-Ohio Jerseys	17	Market Moos	14
Cherlyn's recipes	12	Market reports	19
Classified advertising	20	N.Y. Holstein honorees	16, 18
Cows sick in Texas	7	Scholarships winners	13

"I love staying connected to my Pennsylvania farm roots."
 - J.R., South Carolina

It's time.
Don't wait.

Send in your subscription request now. Keep in touch with dairy news of today.



Two Years \$38 • One Year \$20

Name: _____
 Address: _____
 Town: _____ State: _____ Zip: _____
 Phone or e-mail: _____ New / Renewal (Circle one)

Mail with payment to FARM SHINE, 342 E. Main St., Ste. 201, Leola, PA 17540



George Miller, pictured in 2011 at the National Holstein Convention in Virginia.

George Miller Scholarship apps due by April 1

BRATTLEBORO, Vt. — Applications for the George Miller Memorial Scholarship are due April 1st. The scholarship fund was created in honor of the late George Miller, who was an icon within the Holstein community and dedicated to preparing youth for futures within the dairy industry.

Launched in 2023, the scholarship supports a student who serves as a leader within the dairy industry and their communities. Qualifying college students are invited to apply for the \$1000 award.

The scholarship fund is hosted by the Holstein Foundation, awarded by Holstein Association USA, and supported by Select Sires, who have been allocating funds for this scholarship from semen sales of 7HO15807 George Miller, a previous NxGEN® sire.

"We're thrilled to be offering this scholarship for the second year in a row," says Diedra Harkenrider, director of development for the Holstein Foundation. "Along with preserving George Miller's legacy, the \$1000 scholarship supports a deserving student we expect to go on and make a difference within the dairy community."

The George Miller Memorial scholarship will be awarded at the 2024 National Holstein Convention in Salt Lake City, Utah. Application information can be found on the Holstein Foundation's Website, www.holsteinfoundation.org, under "Scholarships."

Applicants must be a junior or adult member of Holstein Association USA and currently enrolled in an associate's or bachelor's degree program. They must also be a U.S. citizen attending college full-time in the U.S. and pursuing an agricultural degree with dairy-related experiences and career interests.

SCC dropped from 200,000 to 140,000. How did they do it? "We use a lot of Udder Comfort."

— Tony Compton



COMPTON DAIRY, Tony, Pam and Ben Compton
 COLUMBIA, KENTUCKY
 243 cows milking robotically, 88 lbs/cow/day
 SCC average 140,000

"We used Udder Comfort™ for 10 years, and we really liked what it did for our herd. It helped with milk quality and less need for antibiotics," says Tony Compton.

He and his wife Pam and son Ben operate their 240-cow dairy near Columbia, Kentucky. Compton Dairy has been recognized for many years with Dairy Quality Awards.

In February, Ben Compton was honored as the 2023 Kentucky Young Producer of the Year by the KFB and KDDC.

Cows milk in a robotic system today, and Tony observes initially, "our SCC was stuck around 200,000. But then we got it down to average 140,000."

How did they do that? "We use a lot of Udder Comfort. We put it on when they calve, and we do the high-conductivity cows, anything that's a little off gets Udder Comfort because it really works!" Tony reports.

UDDER COMFORT™ Quality Udders Make Quality Milk

Her Comfort is Our Passion!

Softer udders ⇒ Faster milking
 Better quality ⇒ MORE MILK

1.888.773.7153
uddercomfort.com

Helping reach their potential since 1998!



For external application to the udder only, after milking, as an essential component of udder management. Wash and dry teats thoroughly before milking.



USPS 509450 ISSN 0745-7553

Published by Farmshine LLC
 in Lancaster County, Pennsylvania.

1-YR. SUBSCRIPTION - \$20.00
 INTERNATIONAL SUBSCRIPTION - \$40.00
 Published every Friday except the week of Christmas

Dieter Krieg, Editor & Publisher
 Melissa Johnson, Advertising Representative
 Ashley Denlinger, Advertising Representative
 Sue McCloskey, Secretary
 Douglas Denlinger, Production Manager

Send subscriptions, news & advertising to:
 FARM SHINE
 342 E. Main St., Suite 201, Leola, Pa. 17540
 Phone 717-656-8050 | Fax 717-656-8188
news@farmshine.net | ads@farmshine.net

Periodicals postage paid at Lancaster, PA
 and at additional mailing offices.

POSTMASTER: Send Address Corrections To:
 FARM SHINE
 342 E. Main St., Suite 201
 Leola, Pa. 17540

Copyright © 2023. Printed in USA. All rights reserved. No part of this publication may be reproduced in any form without prior written permission by the publisher. Information gathered herein is from resources considered reliable. Accuracy, however, cannot be guaranteed. All printed material is intended for your information and reading enjoyment and is not meant to disrespect or harm any group or individuals. Ads appearing in this paper are not to be considered as an endorsement by Farmshine for products or services offered.

Farmshine's staff reserves the right to refuse any and all material, including articles and advertisements that they determine do not fit the objectives of Farmshine.

'Dynamic duos' drive '97 Milk' to educate and promote

By DIETER KRIEG
Farmshine Editor

PLAINFIELD, Pa. — If you have a sufficient number of 'dynamic duos' you'll end up with an even more dynamic team. Such is the case with 97Milk, the original dynamic duo of which were Nelson Troutman and Bernie Morrissey. Then, right on their heels, came Jackie Behr and Sherry Bunting. Together, they've created a phenomenal platform for dairy education and good will.

And then there's another team, based roughly 270 miles north of where 97 Milk first took root five years ago in Lebanon and Lancaster counties, Pennsylvania.

Meet Jay Hoyt and Duane Spaulding, a truly dynamic duo whose enthusiasm and dedication for 97 Milk is in the champion crusader category. Jay left his home the night before the 97 Milk meeting opened at 10:30 a.m. on March 12th in Plainfield (near Carlisle) Pa. He lives about 90 miles north of Duane, where he spent the night in order to get an early start the next morning.

The fact is, "morning" started at 2 a.m. for these guys when Duane began to prepare one of his famous and most

satisfying breakfasts. Then, with bellies full and minds energized to share their story, they got into Duane's vehicle and headed south.

Jay and Duane are both retired, but as busy as ever. Promoting whole milk and dairy in general is their passion.

The same is true for Jackie Behr, who volunteers her time and talents to 97 Milk on a daily basis. She works wonders.

Renee Troutman, Nelson's daughter-in-law, wrote an article for *Farmshine* which most deservedly appeared on the cover of the January 26, 2024 edition. Following are some excerpts from what she wrote:



It all started with a plastic-wrapped bale and a straightforward message painted by Nelson Troutman.



Retired New York dairymen Jay Hoyt, left, and Duane Spaulding drove five hours to attend the 97 Milk meeting near Carlisle, Pa. Together, they have put Schoharie County, N.Y. on the map, so to speak. Their ever-energetic volunteer work has inspired very significant consumer interest for whole milk. *Photos by Dieter Krieg*

It may be the most curious and catchy dairy internet domain name out there. It's www.97milk.com and in just five short years this website has become a powerhouse resource for nature's powerhouse drink. Just a few minutes spent perusing the links and features on the site proves that 97milk.com is a wealth of information for all things whole milk.

Behind the website is Jackie Behr, who not only is the marketing manager of R&J Dairy Consulting but also volunteers in the same capacity for 97 Milk. The creation and growth of the website is fueled because of Jackie's ardent promotion of milk education as

well as her desire to see family farms succeed.

The website came because of the bale. In December of 2018 Berks County dairy farmer Nelson Troutman painted "Drink Whole Milk - 97% Fat-Free" on the side of a plastic-wrapped round bale.

The bale had only surfaced for a few weeks before Jackie learned about it. "I overheard Nelson and Bernie (Morrissey) talking about it at the R&J Dairy Consulting meeting we had in January," Jackie reflected. "Nelson said he had to paint more bales because people were asking for them."

Since the bale had everyone talking, some began to wonder how to take its message to the next level. A group of farmers and industry people got together to brainstorm and Jackie was one of them.

"It's always burdened me, as someone coming from the industry and from marketing, that we're missing something," Jackie stated. "Something is missing here! Why aren't we sharing all the awesome things about milk?" As Jackie thought about the bale and the message it contained she was convinced it held the key for what she always felt the industry needed.

The first meeting that spawned 97 Milk as an organization determined that, first and foremost, people seeing the bale needed

turn to page 4



Of all the driving forces behind 97 Milk, Sherry Bunting and Jackie Behr provide the energy and whatever else is needed to keep the movement alive and growing.

Durable Ag Curtains

Prepare Now for Winter!



Complete Curtain Systems
with all the components you'll need

- High Quality 16 oz. Vinyl Curtain Material
- Galvanized Bird Wire
- Keder Tubing & Drive Motors

Available with: Manual Gear Drives or Fully Automated to Control Your Curtains 24/7

Ask About
Automation!



SHADY LANE
Curtains LLC

Bird-in-Hand, PA
(717) 690-2003



"The Nation's Industry Leader in Ag Curtains"

SEC final rule _____ from page 1

on global markets requiring this.

The question is, how will methane emissions in cow burps and manure be scored?

New programs are being launched, and more are on the way.

For example, Professional Dairy Producers (PDP is now a trademarked name for PDPW) recently launched a national initiative for 2024. It is described as “a farmer-led sustainability initiative that empowers dairy producers to know and understand their environmental footprint and implement solutions to shape the future of their farms.”

Partnering with Nestle, the PDP program, ‘Your Farm – Your Footprint,’ was piloted with a dozen Wisconsin dairy producers last year. Additional partners and sponsors are now being sought for the national launch.

In this model, farmers across the country can sign up to be evaluated by the program’s third-party expert “Sustainable Environment Consultants,” ironically with SEC as the expert’s acronym.

According to a PDP news release, the third-party expert, SEC, will work with participating farms to collect and analyze their data and use resources like FARM ES, Cool Farm Tool and COMET-Farm. These tools will take into consideration farm-specific information like location, soil type, crop rotation, energy use, nutrient management, milk production, cow numbers, field yields. Methane is not specifically mentioned.

Each farm’s score is confidential in the PDP ‘Your Farm – Your Footprint’ program, but all are aggregated into a collaborative benchmark. Each participating farm also gets a customized roadmap for improvement, is invited to a peer group for brainstorming and benchmarking, and has access to education, technical support, as well as some cost-sharing grants to implement GHG-reducing practices.

Athian Inc., a startup company, is another new pathway with a platform for benchmarking, verifying and monetizing on-farm GHG reductions as insets within the dairy and livestock supply chain.

Described as “industry-led,” Athian is currently partnering with California Dairies, Elanco Animal Health, Tyson, DFA and Newtrient (formed by DMI’s Innovation Center).

This is a model whereby suppliers are paid for carbon credits as “insets” within the dairy and livestock supply chains. Insets differ from offsets.

When carbon credits are sold as offsets to companies outside of the supply chain, those credits leave the farm’s own footprint.

However, when carbon credits are sold as insets within the supply chain, those credits remain part of the farm’s footprint – along with being part of the inset-purchaser’s Scope 3 reporting.

In fact, Athian announced earlier this year that Dairy Farmers of America (DFA) had purchased the first “verified carbon credits” within Athian’s Livestock Inset Marketplace.

According to the press release, a Texas dairy farmer used Athian’s first accepted protocol by reducing enteric methane (in cow burps) and improving feed utilization through a feed management product and quantification tool from Elanco Animal Health. This resulted in nearly 1150 metric tons of carbon dioxide equivalent (CO₂e) reduction.

DFA is described in the Athian press release as the first U.S. dairy cooperative to establish a science-based target (SBT) with the goal to reduce greenhouse gas emissions across the supply chain by 30% by 2030, mentioning industry-wide collaboration on environmental sustainability through the DMI Innovation Center for U.S. Dairy.

Expect to see more GHG-reduction programs and platforms for data collection, verification, and credit-insetting, which will emerge over the next few years via the billions of dollars in USDA Climate Smart Partnership projects as well as through the FARM ES module and other emerging “pathways.”

The dairy industry is already leaning-into the Scope 3, establishing calculators, identifying third-party gatekeepers and hiring bean-counters – with or without the Securities and Exchange Commission mandate.

The dairy industry’s focus aligns with UN Sustainable Development Goals, and World Economic Forum ESG (Environmental, Social, Governance) investing criteria, as the checkoff works with global heavy-hitters to cost-share pilot projects that use the carrot to acquire data.

Global market access for dairy products and carbon-reduction revenue streams for dairy farmers are what they say are the benefits.

Two thoughts come to mind as *Farmshine* has been reporting on this issue for several years.

One: How will all of these emerging programs, platforms and calculators score enteric methane (in belches) in terms of assigning the carbon dioxide equivalents? Will cows continue to be treated like cars as though their belches add warming potential?

In reality, enteric methane contributions from cattle in the U.S. are in a continual cycle in which existing methane is destroyed as new methane is emitted. Dr. Frank Mitloehner of UC-Davis has traveled the world explaining this, and even the Intergovernmental Panel on Climate Change (IPCC) acknowledged in its AR6 document that the GWP100 method overblows the CO₂ equivalence of agricultural methane.

U.S. cow numbers are down, and production is up vs. 40 years ago, so those cyclical burps are certainly far from additive.

Two: Once every farm is providing data to these ‘voluntary’ platforms, even if they are told it remains confidential, how might it be used in the future as the gatekeeper to market access; or as a revenue stream that farmers rely upon that changes the milk pricing structure to speed up consolidation; or even in future regulatory environments that may seek reductions in cow numbers to meet national, state or local climate targets?

Europe’s experience with a harsh green deal is prompting large-scale farmer protests. Their problems started out ‘voluntary’ also.

Bottomline, the SEC final rule appears to be a temporary reprieve in mandatory Scope 3 reporting as a government regulation. Meanwhile, the industry is forging ahead on voluntary Scope 3 reporting and reductions, even if the way methane is calculated overblows the problem in search of a solution. Are we getting the cart out in front of the horse?

It seems no one with power and influence in the dairy industry wants to address how cow methane is calculated, at least not now while billions of “climate-smart” dollars are floating around.

‘Dynamic Duos’ _____ from page 3

a place to go to get more information. There needed to be a website. Thanks to Jackie, within 10 days there was a website. “Looking back I wonder how I had it up and running so quickly, but I did,” Jackie said.

Jackie was the featured speaker at the 97 Milk meeting at the East Pennsboro Fire Hall in Plainfield on March 12th, delivering in person what people would otherwise see on her website.

Professional and contagiously positive, she gave a detailed review of growth and influence over the past five years.

Stating modestly that she could not have done what she did by herself, she mentioned Sherry Bunting quite frequently. They’re a team. A dynamic duo.

“We present (on 97 Milk) easy-to-read milk facts, Jackie told the group as she guided viewers through her charts, graphs, diagrams, pictures and more.

She also urged anyone who has not yet contacted their U.S. Senators about the Whole Milk for Healthy Kids Act (S. 1957) to do so ASAP. The 97 Milk website has very user-friendly section for people to do so via e-mail.

While that’s an example of currently serious business, the 97 Milk website is actually more about reaching American families with true facts about dairy. Thanks to Jackie and Sherry, 97 Milk pops up as a quick resource when consumers look for information about dairy. “we post the positivity on social media six days a week,” Jackie stated, “including news, recipes, photos and (of course) milk facts. “We try to make it fun,” the petite, energetic young woman shared enthusiastically. “We let people know that we love our cows and whole milk.”

Jackie spoke of the ripple effect that 97 Milk and its team of volunteers create. “While it may seem small, the ripple effect can be extraordinary. At that point she invited Jay Hoyt and Duane Spaulding to come up and share what they’re doing up and down eastern New York State. Jackie tracks the “ripple effect” ... the visits, responses, requests and return visits. Duane Spaulding’s home territory, Schoharie County, N.Y. is far and away the most active. A bar graph showed that the dynamic duo of Spaulding and Hoyt lead the 97 Milk efforts by a very wide margin. They love to talk to people about whole milk and their enthusiasm is fueled by the interest and appreciation people show. Most people have never seen or heard the truth about whole milk, Jay and Duane reported. And what really gets them, they went on to say, is when people taste the product. Wherever they go to educate and promote, Jay and Duane always make sure they bring along plenty of samples on ice.

What’s in it for them?

Not even a penny when it comes to stuff for their pockets or wallets.

As for fulfillment felt within the heart, there’s plenty of it coming their way. One, two or three people at a time, they’re winning customers for whole milk and demonstrating good will for the dairy industry in general. It’s the ripple effect Jackie mentioned.

We’ll continue to keep readers posted about what the volunteers of 97 Milk have done and are doing. It’s simply impressive and inspiring.

“ONE THING”

“We were 350-500 SCC.

Now, after two years on **IMMU-PRO**, we maintain 80-120 SCC and silky, healthy udders and more milk.

As long as we milk cows, **IMMU-PRO** is one thing that will be in our ration every morning.”

—Leo Hafeling, N.Y.
SCC 80-120



Start today - 920.650.1631
www.alphageneticsinc.com



CALL 202-224-3121
and tell your Senators
to co-sponsor and
vote YES to S1957
“WHOLE MILK FOR
HEALTHY KIDS ACT”

SUPPORT 97milk.com.
They support you!



HAVE YOU CALLED YOUR TWO SENATORS YET?
GOOD NEWS 24-7-365. 1-605-477-2279





OPEN HOUSE

PLEASE JOIN US!

Skyline Dairy in Smithsburg, MD



OUTSTANDING NEW ROBOTIC FACILITY

MARCH 28
10:00 A.M. - 3:00 P.M.



At Skyline Dairy:

- Lely Astronaut A5 robotic milking system
- Lely Vector automatic feeding system
- Lely Discovery 120 Collector mobile barn cleaner
- Lely Luna cow brush

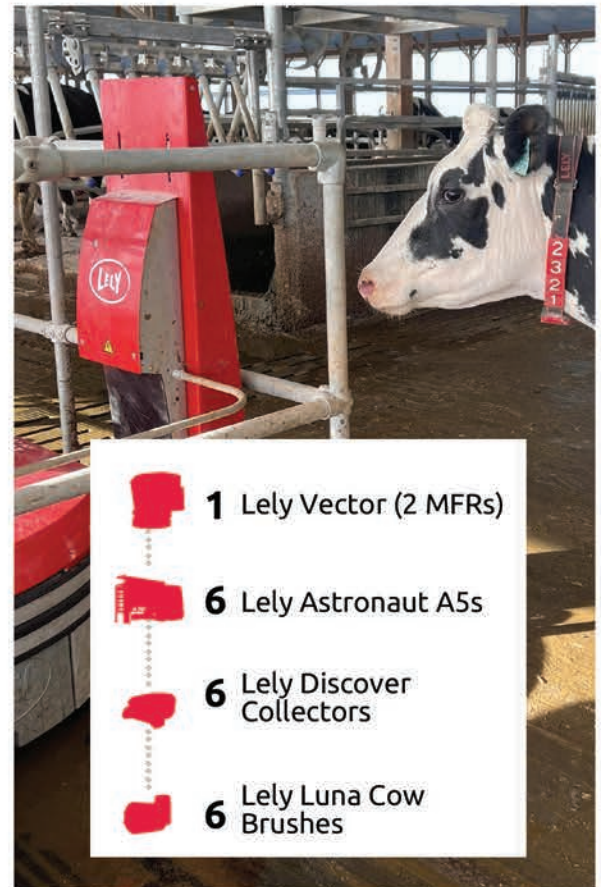
Join Lely Center Mid-Atlantic and our event sponsors for an open house at Skyline Dairy in Smithsburg, MD on March 28, 2024, from 10:00 a.m. to 3:00 p.m.

At this exclusive, on-farm event you'll have the chance to see a Lely robotic dairy in action, as well as chat with producers about making the switch and the benefits they've seen as a result.

Lunch will be provided. Event address provided after registration. Don't miss this opportunity to see **The Future Of Dairy™** in person!



RSVP By March 25
Scan to register or visit
www.lely.com/MidAtlanticEvent
Or Call 717-656-3307
Secure your spot now!



- 1 Lely Vector (2 MFRs)
- 6 Lely Astronaut A5s
- 6 Lely Discover Collectors
- 6 Lely Luna Cow Brushes

SPONSORED BY



If you are interested in learning more about Lely Automation, contact us today!

100 Newport Road • Leola, PA 17540
717.656.3307
www.LelyCenterMidAtlantic.com



LelyCenterMidAtlantic

@LCMidAtlantic

Auction Guide

MARCH 23, 8 a.m. Fraley's Spring Consignment Auction, Fraley Complex, Muncy, Pa. Sale managed by Fraley Auction Company.

MARCH 23, 10:30 a.m. DVU Green & Gold Spring Spectacular, Doylestown, Pa. Sale managed by Pa. Holstein Association.

MARCH 25, 1 p.m. Special Dairy Sale Including Complete Milking Holstein Herd Dispersal, Dewart Livestock Market, Watsonstown, Pa. Sale managed by Dewart Livestock Market.

MARCH 26, 9:30 a.m. Farm Machinery Auction, Belleville, Pa. Sale managed by Martin's Auction Service.

MARCH 27, 10:30 a.m. Dairy Cow & Heifer Sale, New Holland Sales Stables, New Holland, Pa. Sale managed by New Holland Sales Stables.

MARCH 28, 10:30 a.m. ND-Druvale Red & White or RC Reduction Sale, Brubaker's Quality Dairy Sales, Shippensburg, Pa. Sale managed by Brubaker's Quality Dairy Sales.

APRIL 2, 9:30 a.m. Zuck Registered Holsteins Complete Dispersal, Lebanon, Pa. Sale managed by Daniel Brandt.

APRIL 4, 7 p.m. Special Dairy Sale, Fisher's Quality Dairy Sales, Ronks, Pa. Sale managed by Fisher's Quality Dairy Sales.

APRIL 5, 6 p.m. Spring Feeder Cattle Sale, New Holland Sales Stables, New Holland, Pa. Sale managed by New Holland Sales Stables.

APRIL 6, 11 a.m. Ovaltop Holsteins Herd Reduction Sale, Richfield Springs, N.Y. Sale managed by Hosking Sales.

APRIL 12, 9 a.m. Hall Family Dynasty Trust Real Estate Auction, Hughesville, Pa. Sale managed by Fraley Auction Company.

APRIL 12, 11 a.m. GTPI-Type Sale, Lancaster, Pa. Sale co-man-

aged by Daniel Brandt Pedigrees & Marketing and Landis Marketing.

APRIL 13, 9 a.m. Spring Machinery Sale, Penns Valley Livestock, Centre Hall, Pa. Sale managed by Penns Valley Livestock.

APRIL 13, 11 a.m. Indiana Holstein Association Multi-Breed Sale, Columbia City, Ind. Sale managed by Indiana Holstein Association.

APRIL 18, Annual Heifer Turn Out Sale, Brubaker's Quality Dairy Sales, Shippensburg, Pa. Sale managed by Brubaker's Quality Dairy Sales.

APRIL 19, 10 a.m. Best Of Luck-E, Hampshire, IL. Sale co-managed by Luck-E Holsteins and Fraley Auction Company.

APRIL 20, 10:30 a.m. Bradford County Calf & Heifer Sale, Troy, Pa. Sale managed by Bradford County Holstein Association.

APRIL 25, 6:30 p.m. 40th Annual Gospel Express Ministries Benefit Cattle Auction, New Holland, Pa. Sale managed by Gospel Express Ministries.

APRIL 26, 7:30 a.m. Horse Consignment Sale and Special Driving Horse Sale, Penns Valley Livestock, Centre Hall, Pa. Sale managed by Penns Valley Livestock.

APRIL 27, 10:30 a.m. Pa. Ayrshire & Milking Shorthorn Sale, Shippensburg, Pa. Managed by the Pa. Ayrshire Breeders Association.

MAY 25, 11 a.m. Special Riding Horse Sale, Penns Valley Livestock, Centre Hall, Pa. Sale managed by Penns Valley Livestock.

MAY 31, 7:30 a.m. Horse Consignment Sale, Penns Valley Livestock, Centre Hall, Pa. Sale managed by Penns Valley Livestock.

JULY 6, PHA Summer Sensation Sale & Picnic, Somerset, Pa. Sale managed by Pa. Holstein Association.

Advertiser's Index

Agri-King.....24	Morrissey Insurance10
Alpha Genetics (Immu-Pro)....4	Nelson & Sons Concrete Grv.15
AMS Galaxy USA7	New Holland Sales Stables...20
Bargain Page.....16	Nicholas Meat18
Beiler Industries.....21	Patz.....18
Beitzel Spraying.....6	Penns Valley Livestock.....21
Blain Supply7	Power Systems Electric.....13
Brandt, Daniel Pedigrees.....22	Precast Systems21
Brubaker's Dairy Sales.....20	Renaissance Nutrition16
Brubaker, Rufus Refrigeration...6	Rigidply Rafters.....10
Building Directory.....12	Rissler Conveyors.....21
Dewart Livestock Market.....21	Rissler Unloader12
DHIA Pages.....8-11	Select Sires.....17
Esch Hay Equipment7	Shady Lane Curtains.....3
Fisher & Thompson.....5,9	Sollenberger Silos.....22
Fisher's Quality Dairy Sales...23	Sonco15
Genex14	Sturdy Built Manufacturing....7
Horst Grain Roasting21	Triple M Farms.....21
Hosking Sales.....23	Udder Comfort2
JBS6	Weaver's Toasted Grains.....6
Keystone Concrete Products...13	Willow Road Silo Doors.....21
LB Manufacturing.....15	Zartman Farms.....21
Lira Gold11	Zimmermans Glass Strge.....22

Dairyman's Datebook

MARCH 22, 7 p.m. Maryland Holstein banquet at the fire hall, 101 High Street, New Windsor, with social hour preceding dinner.

MARCH 26-28, Maryland & Virginia Milk Producers annual meeting, Hotel Madison, 710 South Main Street, Harrisonburg, Va.

APRIL 13, 9:30 a.m. Maryland Holstein Spring Show, Howard County Fairgrounds, off of I-70,

2210 Fairgrounds Road, West Friendship.

APRIL 25, 9 a.m. Pennsylvania Holstein Spring Show, Grange Fairgrounds, Centre Hall, Pa.

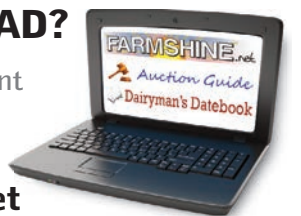
APRIL 26-27, Pennsylvania Ayrshire Convention, Shippensburg, Pa.

JUNE 18-21 National Ayrshire Convention, Comfort Inn & Suites, 840 Sean Drive, Fremont, Ohio.

LOOKING AHEAD?

Find auction and event listings to fill your calendar online:

www.farmshine.net



Md. & Va. Co-op buys Philadelphia Hood plant, their first in Pa.

Governor announces aggressive package to assist plant expansion

By **SHERRY BUNTING**
Special for Farmshine

PHILADELPHIA, Pa. — Maryland & Virginia Milk Producers Cooperative Association (MDVA) has completed its purchase of the HP Hood milk manufacturing plant in the City of Philadelphia. And on Tuesday, March 19, Pennsylvania Governor Josh Shapiro and Agriculture Secretary Russell Redding announced that the state's investment, along with MDVA's, will fund an expansion.

This is MDVA's first milk processing plant in the Keystone State; 80% of MDVA members are Pennsylvania dairy farmers.

The state is providing \$10 million from the Department of Community and Economic Development (DCED) to expand the plant. This includes a \$7.25 million Pa. Industrial Development Authority loan, \$2.5 million in Redevelopment Assistance Capital Program funding, and a \$300,000 workforce development grant to train workers.

The expansion will retain 178 existing jobs, including 137 union jobs.

MDVA Milk, producers of Maola Local Dairies products, will

invest additional monies into the plant to transform the production capacity from 10 million to 25 million gallons annually over a 2-year period.

"We are very excited and have been working on this for some time. With 80% of our family-owned farms existing in Pennsylvania, it made sense that we would seek an opportunity to process our milk in the state as well. The acquisition of our new ultra-pasteurized plant in Philadelphia represents more than just a business transaction — it is a testament to the power of partnership," said MDVA CEO Jay Bryant at a press event in front of the plant on Tuesday.

"This is an exciting day for Pennsylvania Ag — not just for the 720 Pennsylvania dairy farmers who are members of your co-op, but for all 5000 dairy farmers in our Commonwealth who have been waiting for more processing capacity to come online," said Governor Josh Shapiro, joining Bryant at the podium. "The Commonwealth's economic success is dependent on our rural communities and our farmlands."

Ag Secretary Russell Redding was also instrumental in the process. He said: "Pennsylvania's dairy industry is not only a keystone to our heritage, but also a key to our future. This investment and partnership with MDVA is a testament to the growth and potential for this industry."

(JBS)

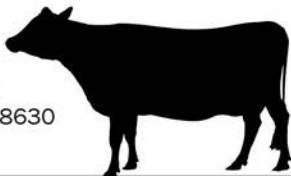
Souderton, PA

SELL YOUR CATTLE!

**PURCHASING
CULL COWS**

Same-Day Payment
NO Fees • NO Commission

For more information:
Direct: (970) 506-8215
Duff George: (717) 594-8630



Livestock Buying Stations are OPEN:

7195 Molly Pitcher Hwy
Greencastle, PA 17225
Monday & Wednesday
9 a.m. - 2:30 p.m.

503 School Rd
Denver, PA 17517
Tuesday & Thursday
9 a.m. - 2:30 p.m.

Contact Doug Musser: (267) 371-9824

(JBS) Learn more about our brands at
jbsfoodsgroup.com

249 Allentown Rd | Souderton, Pennsylvania 18964 USA

**RUNNING LOW
ON HIGH-OLEIC
(PLENISH) BEANS?**

We can now sell
Plenish Flaked Toasted
Beans directly to you!

Call for pricing & delivery info!



Toasted is Tastier!
(717) 355-BEAN (2326)
220 White Oak Road
New Holland, PA 17557

Rufus
Brubaker
Refrigeration LLC

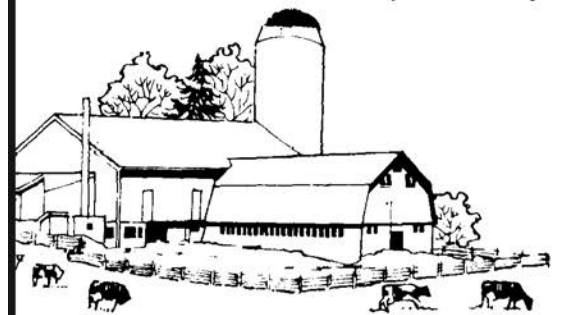
Toll Free 1-866-665-3525

**New & Used
Quality Milk Tanks**
400 Gallon 1000 Gallon
700 Gallon 1500 Gallon
800 Gallon

**Walk-In Coolers and
Freezers, Panels and
Doors Available.**

**WHITE WASHING with
ADVANTAGE FARM WHITE**

- Dries White • No Wet Floor
- Is Compatible With Disinfectant And Fly Sprays
- Does Not Rub Off Easily
- Washes Off Windows And Pipelines Easily



**BARN CLEANING SERVICE AVAILABLE
WITH COMPRESSED AIR**

To have your barn cleaned with air it will clean off dust, cobwebs and lots of the old lime. This will keep your barn looking cleaner and whiter longer.

**CALL US ABOUT
ON THE FARM FLY CONTROL**

Serving Southeastern Pa. And More

Beitzel Spraying

Witmer, PA 17585 • 7:00 A.M. to 5:00 P.M.
717-392-7227 or Toll Free 1-800-727-7228

**CERTIFIED COMMERCIAL APPLICATORS
LICENSED 45 YEARS EXPERIENCE INSURED**

Radio Dispatched Trucks
**Barn Spraying Is Our Business
Not A Sideline
Spraying Since 1961**

Dairy cattle illness in Texas Panhandle triggers investigation

By **SHERRY BUNTING**
Special for Farmshine

AMARILLO, Tex. — The Texas Animal Health Commission (TAHC) and USDA, in coordination with industry and veterinary medical partners, are investigating emerging cases of illness in mid-lactation dairy cows in the Texas Panhandle of as-yet undetermined cause and transmission.

The TAHC circulated a letter March 16 to veterinarians and industry concerning the situation that is at this point limited to an undetermined number of dairies. No reported cases outside of the Texas Panhandle are confirmed by officials at this time.

A TAHC spokesperson told Farmshine Tuesday in a phone interview (March 19) they are not ready to put out a media statement, but in the interest of full transparency, would brief people on what is known and being done.

"We are aware of an animal health situation affecting dairy cattle and are working with USDA and Texas A&M with Dr. Alexis Thompson at the Diagnostic Lab -- and with dairy veterinarians, the industry, and other part-

ners -- to coordinate an efficient plan to monitor and evaluate affected cattle, and to develop a case definition and conduct additional diagnostics," the TAHC spokesperson said.

In response to questions, she noted that the Texas State Veterinarian is in contact with counterparts in other states as part of this coordinated effort.

"Right now, our main message is for dairies to conduct standard biosecurity measures, and if they have enhanced biosecurity plans in place, now is a good time to implement those," the TAHC spokesperson said.

She could not say how many herds or what percentage of those herds are affected.

According to the TAHC letter to veterinarians and dairy producers, the clinical signs include decreased herd level milk production; a sudden drop in production with some severely impacted cows experiencing changes in milk appearance (thicker, concentrated, colostrum-like). Affected cows also experience a decline in feed consumption with a simultaneous drop in rumen motility, abnormal tacky or loose feces, and some fever.

"Impacted herds have reported older cows in mid-lactation may be more likely to be se-

verely impacted than younger cows and fresh cows or heifers. Dry cows and heifers do not appear to be affected," the letter stated.

The TAHC spokesperson did confirm that death loss from this condition is low.

In other industry correspondence, Farmshine has learned that while cattle do recover, not all affected cattle recover their milk production, which has led to some increased culling in the face of high feed costs and high prices paid for market cows for beef.

Even though this is an emerging situation, not a regulated disease, the TAHC spokesperson observed: "There are no milk and meat concerns at this time." This is due to both the

Pasteurized Milk Ordinance (PMO) and the Federal Meat Inspection Act that together ensure safe and wholesome milk and meat products enter the food chain.

The PMO dictates best practice to divert from the saleable milk supply any milk that is abnormal in appearance.

Additionally, the Federal Meat Inspection Act requires ante- and post-mortem examination of every animal presented for slaughter.

The TAHC encourages veterinary practitioners to report affected animals, and may call Dr. Alexis Thompson with questions (806-651-7478) to make case-specific diagnostic

turn to page 17



FOR THE CONTROL OF

- Starlings
- Pigeons
- Sparrows
- Crows

5 lb. concentrate

DEALERS WELCOME

These Pesticides have restricted use. MUST HAVE Current Applicator's License.

Make Those Rodent Tracks END!

Ditrac®

Tracking Powder*

Kills Rats & Mice
6 lb. Bucket

Rat & Mouse Bait Available

Blain Supply
190 Church Road, Blain, PA 17006
717-536-3933 • Fax: 717-536-3999

Do you have heavy crops such as Cereal Rye, Trifoliate, 1st cutting Alfalfa?

HAY TEDDERS

Do you need a Tedder that can handle these crops?

New tedders have a:

- One year warranty
- Hyd. fold and tilt
- Lifetime warranty on tine arms
- New tine design with 4x less breakage
- Four sizes to fit your needs
- 2-star 9 ft. wide
- 4-star 18 ft. and 22 ft. wide
- 6-star 32 ft. wide

Contact Esch Hay Equipment for a Tedder that is built to handle these crops!



Call us for a dealer near you or stop by our location at:

EHE

Esch Hay Equipment LLC
3230 E. Gordon Rd., Gordonville, PA 17529
717-768-0600

NEW PRODUCT!

GEAR DRIVE

No Bearings, Belts, or Tensioners to Replace!





FALCON™

54" Circulating Fans

- Powered by 1 HP, 56C standard motor
- "Sturdy Built" Galvanized steel fan frame
- Available in single or three phase. No soft starters required
- Lifetime synthetic lubrication: No quarterly or yearly maintenance
- Optional variable speed drives

Call 866-543-5116

sales@sturdybuiltmfg.net
260 S. Muddy Creek Rd. Denver, PA 17517



Merlin^{2G}



YOU'RE INVITED!

GALAXY

Tuesday, March 26 | 10 AM - 2 PM
234 Gunhart Rd. Mohnton, PA 19540



RSVP HERE

OPEN HOUSE

Showcasing our Merlin^{2G} Milking Robots and the new Freestall Barn. Lunch provided by Kauffman's Bar-B-Que

Thank you to our sponsors:







E & F AG SYSTEMS LLC

Table listing farm names and statistics for various counties including Adam & Lisa Sonnen, Cogán Sky Farm, and Jacob Heisey.

Table listing farm names and statistics for Adam & Lisa Sonnen, Cogán Sky Farm, and Jacob Heisey.

Table with title 'Mifflin County' listing farm names and statistics for Dave & Jen Stuck, Shawn Smoker, and others.

Table with title 'Montgomery County' listing farm names and statistics for Jonathan & Karen S., Lalisa Holsteins, and others.

Table with title 'Northampton County' listing farm names and statistics for Keystone Farm and others.

Table with title 'Perry County' listing farm names and statistics for Trout Bros. Dairy, Gerald L. Martin, and others.

Table with title 'Schuylkill County' listing farm names and statistics for Jay Ivan Newswanger, Benjamin Burkholder, and others.

Table with title 'Snyder County' listing farm names and statistics for Tim & Laurie Hackenberg, John David Marti, and others.

Table with title 'Somerset County' listing farm names and statistics for Hillcrest Saylor Dairy, Harlan High, and others.

Table listing farm names and statistics for Dovan Farms, John Brenneman, Philip Petersheim, and others.

Table with title 'Susquehanna County' listing farm names and statistics for Jo-san Farms, Inc., Robert Reyan, and others.

Table with title 'Tioga County' listing farm names and statistics for Kregger Farms, Dan & Jessica Slaymaker, and others.

Table with title 'Union County' listing farm names and statistics for David Oberholtzer, Meadow Pond Farm, and others.

Table with title 'Sussex County' listing farm names and statistics for Bailey, J. E. & Sons, John A. Mills, and others.

Table with title 'Washington County' listing farm names and statistics for John E. Marchezak, John E. Marchezak, and others.

Table with title 'York County' listing farm names and statistics for Legen-Dairy Farm, David F. King, and others.

MARYLAND

Table with title 'Carroll County' listing farm names and statistics for Arbaugh S. Flowing Sp.

Table with title 'Cecil County' listing farm names and statistics for Leonard & Vernon Horst, Gideon & Kate Esh, and others.

Table with title 'Frederick County' listing farm names and statistics for Keilholtz, James & Sharon, and others.

Table with title 'Garrett County' listing farm names and statistics for Delvin Mast, and others.

Table with title 'Harford County' listing farm names and statistics for Matt & Julie Yarring, Andrew Kamyszczek, and others.

Table with title 'Washington County' listing farm names and statistics for Kirk Winders.

Lebanon County

Table listing farm names and statistics for Whistle Way Holsteins, Furnace Hill Holsteins, and others.

Table listing farm names and statistics for Nathan Nolt, Jacob Stoltzfus, and others.

Lycoming County

Table listing farm names and statistics for Cogán Sky Farm, Adam & Lisa Sonnen, and others.

Delaware State DHIA

Table listing farm names and statistics for University of Delaware, Kent County, New Castle County, and Sussex County.

New Jersey DHIA

Table listing farm names and statistics for February 2024, Central Jersey Area, and South Jersey Area.

Large advertisement for LIRA GOLD Silage Inoculants, featuring the product name, benefits, contact information, and a call to action.



Rhubarb Punch

- 4 cups chopped rhubarb
- 4 cups water
- 2 cups sugar
- 1/3 cup lemon juice
- 2 liters ginger ale

Cook rhubarb in a saucepan until soft. Strain. Add sugar to rhubarb juice and chill. Next add lemon juice. Fill glasses 1/2 to 3/4 full of rhubarb/lemon juice. Add ice, top with ginger ale. Serve.

Radishes & Dip

- 1 cup sour cream or yogurt
- 1/2 teaspoon season salt
- 1/8 teaspoon black pepper
- 2 teaspoon minced onion
- 1 tablespoon minced chives
- Radishes
- Salt (optional for serving)

Combine sour cream with seasonings. Trim and wash radishes. For added flair, make several slices along the sides of each radish and soak in ice water for 20 minutes before serving.



Cream of Asparagus Soup

- 2 tablespoons butter
- 1 1/2 cup chopped onion
- 6 cups diced asparagus
- 4 cups chicken broth
- 1 cube chicken bullion
- 1 cup cream
- 1/8 teaspoon pepper

Saute onions and butter in a saucepan for 4 minutes. Add asparagus, chicken bullion and

chicken broth. Cook until the asparagus is tender. Remove for heat. Puree with an immersion blender. Return to heat. Add cream and pepper. Decorate each serving with a drizzle of extra cream.



Taste Spring

By Cherlyn Beachy

Celebrate spring with these garden firsts. Every bite will reward you with the taste of spring.

Honey Celery Seed Dressing

- 3/4 cup honey
- 3/4 cup olive oil
- 1/2 cup sugar
- 1 1/2 teaspoon paprika
- 1 teaspoon celery seed
- 3/4 teaspoon salt
- 1/2 teaspoon onion powder

Mix all ingredients in a pint jar. Store extra dressing in the refrigerator. Makes about 2 1/4 cups.



Strawberry Rhubarb Jam

- 1 3/4 cups finely chopped rhubarb
- 1/2 cup water
- Use a medium size saucepan and cook rhubarb over low heat until soft.
- 2 1/4 cups sliced strawberries
- Add to the rhubarb. Continue to cook over medium heat.
- 1 box fruit pectin (1/3 cup)
- 1/2 teaspoon butter
- Stir into fruit. Bring to a full boil. Continue to stir.



6 cups sugar
Combine with fruit mixture. Return to a boil. Boil for 1 minute while stirring constantly. Remove from heat. Ladle into jars. Screw on lids. Process in boiling water for 10 minutes. For questions about canning refer to USDA guidlelines.

Directory of Building Contractors

for new and renovated dairy facilities and other farm buildings

RYAN SERVICES, INC.
Building Relationships
Joseph M. Ryan
3179 Quaker Valley Road
New Paris, PA 15554
info@ryanservicesinc.com
Cell: 814.285.6129 Office/Fax: 814.839.4826

DAIRY HOUSING CONSTRUCTION & REMODELING
Free Stall Barns • Tie Stall Barns
Heifer Barns • Calf Barns • Robotics
Special Needs • Manure Handling
Quality & Value in Construction
(800) 845-3374 **FARMER BOY** FarmerBoyAg.com
Parts You Need. Brands You Know. Prices You Can Afford.

Specializing in construction & renovation of agricultural buildings

- Dairy Facilities • Pole Barns • Free Stall Barns
- Concrete Work • Reroofing • Horse Barns

WHITE HORSE CONSTRUCTION
1-888-385-2360 • 1-610-593-5559

E&F Ag Systems
Ag Construction & Equipment
New freestall & heifer barns.
Freestall barn renovations.
We specialize in all types of dairy curtains.
2812 Old Phila. Pk. (717) 768-0304
Bird in Hand, PA 17505

KING
Premier Dairy Facilities
Dean Hoover
King Construction Co., LLC Office: (717) 354-4740
525 Hollander Rd. Cell: (717) 304-4993
New Holland, PA 17557 dhoover619@comcast.net

Building Contractors:
Our directory of building contractors runs the 2nd and 4th weeks of each month. Call our advertising department to find out how to be included.
717-656-8050

Don't forget the Pa. Spring Holstein Show

STATE COLLEGE, Pa. — The Pennsylvania Holstein Spring Show will be held on Thursday, April 25, starting at 9 a.m. at the Grange Fairgrounds in Centre Hall. Kevin Doebriener of Ohio will be placing all entries.

Early check-in of entries through the *Showman* app starts on Monday, March 25, for \$25 per entry. Latest entry is by noon on Wednesday, April 24, for \$100 per animal. All animals must be on site by noon on April 24; set-up at the fairgrounds is permissible after 9 a.m. on Monday, April 22nd.

A chicken BBQ meal sponsored by Purina Feeds and four Purina mills will be offered on Tuesday, April 23, at 7 p.m. for a contribution of \$5 per meal. Reservations are required by Friday, April 19, to Laura at (570) 560-0324.

A showmanship contest will be held on Wednesday, April 24, starting at 6 p.m.

SPIRO MAX
14' to 30' Silos
10 X more Start-up torque than blower units in frozen conditions
Single lever retractable conveyor for silo filling convenience.
Order and pay by March 31 for 10% discount
HIGH RISE HEXAPODS AVAILABLE
Rissler Unloader LLC
814-766-3168

Premier Select Sires gives over \$20,000 in scholarships

TUNKHANNOCK, Pa.—Premier Select Sires awarded over \$20,000 to students through the 2024 Premier Future Ag Leaders Scholarship Program. Two students received \$2500 scholarships through the Johnny Daniel Memorial Scholarship and the Wayne Dudley Scholarship. Nineteen other students received scholarships of \$500 to \$1000 in value. Six students received an Honorable Mention with a \$100 cash award and semen gift certificate.

Alex Empet, son of Richard and Dana Empet of Kingsley, Pa., received the Johnny Daniel Memorial Scholarship. His family owns Empet Farms, where they keep 150 milking cows and a total of 350 head. He is a student at SUNY Cobleskill studying dairy production and management. After college, he plans to return to Susquehanna County to continue working on the family farm. He hopes to update the facility and serve as an advocate for animal agriculture in his community.

Paige Peiffer, daughter of Ammon and Brenda Peiffer, Lebanon, Pa. Paige received the Wayne Dudley Scholarship. She calls Boxed-In Acres home ... a dairy farm that milks 80 Holsteins and raises all of their own replacement heifers and calves. She is a student at Penn State studying animal science (science option). After college, she plans to work in the artificial insemination industry. She also wishes to stay active on her family's dairy farm.

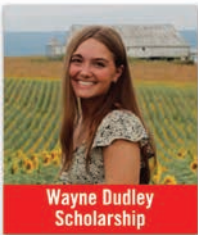
Lemuel and Joseph Coltrane of Pleasant Garden, N.C. are the sons of Amy and David Coltrane, owners and operators of Coltrane Dairy LLC with 550 milking cows and a total of 1300 head from heifers to dry cows. Both young men are students at N.C. State studying agriculture science, broadening their knowledge and building relationships with people in agriculture. After graduation they plan to return to the family farm to use their education to apply new techniques and technologies so that they can help the farm produce quality products, ensure animal comfort and care, and run an efficient, healthy dairy farm.

Sarah Diehl of McVeytown, Pa. is the daughter of Joe and Kristin Diehl, owners of Musser Run Jerseys, a 240-cow Registered Jersey farm. A student at Virginia Tech, she's studying dairy science – pre-vet track. After earning her bachelor's degree, she hopes to attend veterinary school to become a licensed food animal veterinarian. She wishes to treat animals and help farmers discover new ways to improve their overall herd health and profitability.

Julia Heijkoop, daughter of Johan and Trisha Heijkoop, is from Milk A Way and K&H Dairy, outside of Mayo, Fla. where they have 2000 dairy cows. She is a student at the University of Florida studying agriculture operations management with



Alex Empet



Paige Peiffer



Lemuel Coltrane



Sarah Diehl



Julia Heijkoop



Darcy Heltzel



Bethany Knutsen



Katheryn Longenecker



Victoria Longenecker



Constance Maxwell



Lydia Brown



Joseph Coltrane



Katelyn Heckman



Salem Sifford



Jordan Anderson



Rachel Craun



J. Isaac Folts



Karl Graulich



Ainsley Sellers



Timothy VanLieshout



Natalie Yoder

minors in management and sales in agribusiness, and agriculture and national resource ethics and policy. After college, she aspires to serve as an agricultural lobbyist and to work in agricultural marketing.

Darcy Heltzel of Martinsburg, Pa. is the daughter of Andrew and Jennifer Heltzel, owners and operators of Piney-Mar Farm, a 150-cow dairy and 120 replacement heifers. A student at Iowa State University studying food science with a minor in animal science, Darcy hopes to become a food scientist. Through this role, she will advocate for dairy foods, help farmers by creating new avenues for their milk, and have a complete understanding of food processing from cow to consumer.

Bethany Knutsen of Harrington, Del. is the daughter of Stephanie and Gregg Knutsen. G&S Dairy, a dairy farm with 60 milking cows and 120 total head is where she calls home. A student at the University of Delaware studying plant science, she aspires to become a certified agronomist and someday own an independent agronomy business. She wants to help farmers do what is best for their land so they can be profitable and sustainable, achieving higher production with fewer resources.

Katheryn Longenecker, the daughter of Doug and Yvette Longenecker is from Penn England Farms, LLC, Williamsburg, turn to page 15

Keystone Concrete Products, Inc.
477 E. Farmersville Rd.
New Holland, Pa. 17557



(717) 355-2361 - corporate office
(717) 355-9548 - fax
keystoneconcreteproducts.com

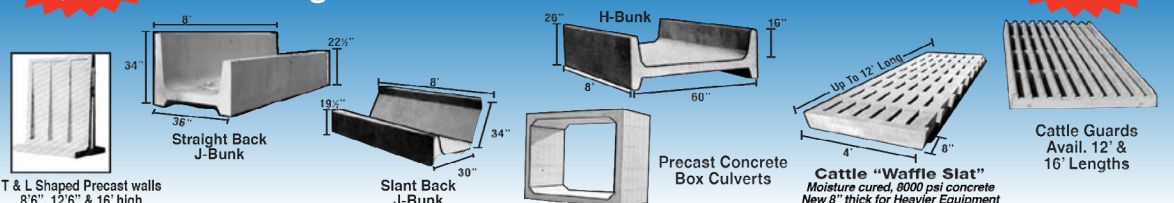
NEED THAT BUNKER? CALL ASAP TO RESERVE YOUR WALLS!!!



Secure Cover Dealer

Financing Available

Agricultural Pre-cast Products Available:



Power Systems Electric Inc.

Emergency Generator Systems & Service
885 South Railroad Street, Myerstown, Pa 17067

Sales, Service, & Rentals
Providing service for most brands



Maintenance Programs

New & Used Gen Sets, Transfer Switches, PTO Gens.

24 HR EMERGENCY SERVICE



info@psegenerators.com
www.psegenerators.com

For all your generator needs call (717)933-5617

Vet practitioners on the case too
Abnormal animal health situation in Texas is time for dairy industry to come together

While investigations are underway on a ‘mystery illness’ in the Texas Panhandle that affects production in mid-lactation cows, but has been non-fatal in nearly all cases, speculation has run rampant.

It’s important for dairy producers to remain calm, but alert.

In addition to the information reported in *Farmshine* this week (story begins on page 7), we learned that the American Association of Bovine Practitioners (AABP) is also on the case, having released statements within the organization of practicing veterinarians and facilitating virtual meetings to compare notes.

On Wednesday afternoon, March 20, the Univ. of Wisconsin Veterinary Diagnostic Laboratory sent out a ‘special news release’ apprising the industry of the efforts underway, affirming no cases have been reported or identified to-date in Wisconsin, and reaffirming that there is currently no clear case definition – but that diagnostic test results to-date, have not found a definitive cause with no evidence of a “reportable” or “foreign” animal disease at this time.

“There is also no evidence of disease in any other species, includ-



Milk Market Moos

by Sherry Bunting
 agrite2011@gmail.com



ing people, from direct contact or consumption of food products,” the Wisconsin Vet Lab stated.

Dairies and veterinary practitioners that have ‘next-level’ biosecurity protocols are implementing them. For example, a large herd dispersal set for March 23 in New Mexico has been rescheduled for April 6 in an abundance of caution, even though the cases are at this point limited to Texas, predominantly the Panhandle region.

While we all wait to learn more verified information about this abnormal animal health situation, it’s important to realize this is a time for the industry to come together. Replacement heifer numbers are at nearly 20-year lows, so the culling of cattle that recover from illness, but do not regain their milk production, can impact the supply-side even as milk production continues to trend downward. On the flip-side, careless reports and social media banter has the potential of affecting consumer demand at a time when domestic cheese demand is down while cheese production

is ramping up. Science, perspective, and verifiable information are critical.

Let’s let the professionals do the important work. Whether acting in service as regulatory veterinarians, diagnostic lab veterinarians, practitioners or in other capacities, these men and women wake up every morning and go to work to keep healthy animals healthy, help sick animals regain health, and keep the U.S. food supply the safest in the world. They are on the job using data from diagnostics to drive the effort of determining cause, transmission, and ultimately any potential forthcoming recommendations.

est in the world. They are on the job using data from diagnostics to drive the effort of determining cause, transmission, and ultimately any potential forthcoming recommendations.

April Class I mover at \$19.18 (vs. \$20.19)

USDA announced the April advance Class I base price ‘mover’ Wed., March 20 at \$19.18, up 38 cents from the March mover and 33 cents higher than the Class I mover a year ago.

At \$19.18 under the current ‘average-plus-74-cents’ formula, the April mover is a \$1.01 per hundredweight lower than the \$20.19 it would have been under the previous ‘higher of’ formula.

In May, it will be five years that farmers have faced unintended negative consequences of the Class I formula change that was put in the 2018 Farm Bill and implemented May 2019. This could cost dairy farmers nearly \$500 million in Class I value loss for 2024, alone, according to the forecast of a continuing wide spread between the two manufacturing class prices that are now averaged with an added adjuster of 74 cents to set the Class I base price instead of using the higher of Class III or IV advance skim pricing factors to set that Class I base mover as was done since Order Reform in 2000. If current price projections are correct, the cumulative net loss from this pricing change by the end of 2024 could reach \$1.6 billion. This is significant given the fact that more analysts are now coming to the realization that replacement cattle numbers are short, dairies are struggling financially, and yet the industry is set to build and commission around \$7 billion in new processing capacity between now and the end of 2025.

Milk futures mostly higher, especially Class III summer 2024 into early 2025

Milk futures were higher across most of the next 12 months, and the gains in Class III were greater than the gains in Class IV, thus narrowing the divergence a bit. March through July Class III futures contracts were lower, while August 2024 through Feb. 2025 made solid gains of 25 to 50 cents compared with a week ago. Class IV contracts were up a modest 5 to 20 cents pretty much across the board with a few months slightly below last week’s levels.

On Wed., March 20, the Class III milk futures averaged \$17.86 for the next 12 months – up 21 cents from the previous Wednesday. Meanwhile, the 12-month average for Class IV futures contracts averaged \$20.37, up 6 cents from the previous Wednesday.

Dairy spot markets continue to seek direction

In the CME daily spot market, cheese made gains this week, while butter was mostly steady and powder and whey lost ground.

Butter futures were solidly higher across the board with weakness only in the current month contract. On the other hand, the spot cash price came into the week moving lower then gained back nearly 2 cents, pegged at \$2.8375/lb on Wed., March 20, just a fraction of a penny below the previous Wednesday with zero loads trading.

Grade A nonfat dry milk lost nearly 2 cents per day the first three days of trade this week. By Wed., March 20, the NFDMS spot price was pegged at \$1.1175/lb, down a nickel compared with the previous Wednesday.

The cheese market was the bright spot after last week’s tumble. The 40-lb block Cheddar price was pegged Wed., March 20 at \$1.45/lb, up a penny and a half from the previous Wednesday with a single load trading. The 500-lb barrel cheese markets saw more significant gains, pegged at \$1.4950/lb, up 7 cents with zero loads changing hands.

The dry whey spot price gave back all of last week’s gain as the rollercoaster ride in this market continues. On Wed., March 20, the spot price for dry whey lost 2 1/2 cents on the day, pegged 40 1/2 cents/lb, down 2 1/2 cents on the week with 3 loads changing hands.

U.S. milk production down 1.3% vs. year ago, 8th straight month of decline

The USDA Monthly Milk Production Report Wed., March 20 showed February was the 8th consecutive month of lower than prior year output when adjusted for the extra ‘leap year’ day in February this year vs. last year. Total Feb. production at 18.1 billion pounds nationwide was 1.3% lower than year ago with 89,000 fewer cows milking and 0.4% less milk output per cow.

USDA also revised lower the milk production total for January, making it 1.2% below year ago.

Nearly all of the 24 major milk producing states had less milk than a year ago. Look for more from this report next week.

Meanwhile dairy cull cow prices skyrocket

The prices for dairy cull cows (and bull calves) are skyrocketing. This week on USDA-reported livestock auctions in Pennsylvania, dairy market cows culled for beef brought prices \$2 to \$10 higher than the previous week. The Breaking Utility cows averaged a whopping \$120 per 100 pounds liveweight, up fully \$10; Boning Utility averaged \$109.75, up \$2; and Lean Cutter cows averaged \$109.35, up \$10.

Straight Holstein bull calves weighing 90-120 lb averaged \$620 per 100 lbs liveweight, topping over \$700; dairy beef crossbred calves averaged \$910, with market tops to \$1025.

Go Full Circle

FeedWise™

Beef x Dairy Program

Your Complete, Full-Circle Solution
 Create high-quality beef x dairy calves that have a guaranteed buyer at full market value.

Scan to learn more!

GENEX™
 FOR GENERATIONS

www.genex.coop/FeedWise

© 2023 Genex Cooperative. All rights reserved. A-6242472398

Scholarships from page 13

Pa. The family has a herd of 2100 milking cows; 4000 head total. A student at Penn State studying bio-renewable systems with an ASM option. After college, she plans to become an agricultural engineer or acquire a job in product validation or field testing equipment under an agriculture equipment company. With precision agriculture gaining popularity and importance in the industry, she desires to play a part in the impact technology will make in the future.

Victoria Longenecker, also from Penn England Farms, LLC, is the daughter of Doug and Yvette Longenecker. She is a student at Penn State studying biological engineering and aspires to work for the Natural Resources Conservation Service as an agricultural and environmental engineer. She looks forward to helping take pressure off of farms in meeting regulations, while helping the agriculture industry have a positive impact on the environment.

Constance Maxwell of Shady Dale, Georgia is the daughter of Cuyler and Christy Johnson. Home is Godfrey Dairy Farm, a Holstein farm milking 1000 cows. A student at Illinois College studying agriculture business, Constance hopes to join the agricultural workforce. She wants to become a "bridge" between dairy producers, consumers and agricultural companies, fostering positive communication and understanding.

Lydia Brown of Mill Creek, Pa. is the daughter of Scott and Emily Brown, owners and operators of Valley Meadow Farm, an Angus operation with 40 head. She is a student at Penn State studying animal science. After college, she hopes to attend veterinary school and pursue a career in animal medicine while continuing to raising beef cattle on her family's farm.

Katelyn Heckman, the daughter of Tracie and Chris Heckman, Kutztown, Pa. TBM Farm, a Holstein operation with 170 milking cows and 300 total head, is home. In college, she plans to study animal science / pre-vet medicine. After college, she plans to attend vet school and become a large animal veterinarian. She also wishes to study embryology and breeding and learn to help others maximize herd potential on dairy farms. She plans to continue helping on her family's farm as well.

Salem Sifford of Goldvein, Va. is the daughter of Stephen and Rosemary Sifford. Her family owns Roseview Cattle Farm (50 head) and Pleased-Rose Dairy (50 head). A student at Virginia Tech studying dairy science, she aspires to find a career working in livestock extension so she can work hands-on with producers, be involved in advocating for agriculture, and work with future generations of agriculturists while also continuing to operate her own herds of beef and dairy cattle.

Jordan Anderson of Centre Hall, Pa. is the daughter of Donald and Angela Anderson. Home is Locust Rock Farm / Cabaret Cattle Company, where she and her family raise Holsteins and Jerseys. She is a student at University of Wyoming studying agriculture communications. After college, Jordan hopes to pursue a career in agriculture communications and work in a capacity that allows her to be an advocate for the dairy industry. Whether this is in the marketing department of a company or working in education for a nonprofit, she hopes to bridge the gap between producers and consumers.

Rachel Craun of Mt. Crawford, Va. is the daughter of Kevin and Patti Craun. She calls Van Ike Farm home, proud to own about 20 head of Holsteins herself. She is a student at Purdue University studying agricultural and biological engineering. After college, she plans to pursue a career in agricultural engineering, hoping to find employment with a private engineering firm that focuses on ag-related projects, or for the Natural Resource Conservation Service. She has interest in new technologies and how they can be used to be proactive in staying ahead of environmental regulations that impact agriculture.

J. Isaac Folts of North Collins, N.Y., the son of Josh and Virginia Folts, calls Folts Farms LLC, home. They milk 120 cows with two Lely robots and also have a show barn housing 45 show animals. He will attend Cornell University to study animal science. After college, Isaac plans to take over the family business with hopes to apply the lessons learned to maximize potential.

Karl Graulich of Cobleskill, N.Y. is the son of David and Suzanne Graulich. Home is Argus Acres LLC, where they milk 500 Registered Holsteins. A student at Iowa State studying agronomy, he plans to return to his family's farm and help expand it alongside his older brother and father. His role will be that of crop manager.

Ainsley Sellers of Lenoa, Pa. is the daughter of Kraig and Meranda Sellers. Gem-Rock Holsteins (60 cows) is home. She will attend Penn State to study animal science. After college, Ainsley aspires to be a dairy robotics technician. She enjoys working with both farmers and animals, and she feels this career will help her enhance the lives of both.

Timothy VanLieshout of Verona, N.Y. is the son of Stephen and Cynthia VanLieshout. His family operates a dairy farm, milking 1100 Holsteins, with 2200 total head. He is a student at SUNY Morrisville studying animal science with an emphasis on dairy. After college, he plans to return to the family farm and earn a management/owner's position.

Natalie Yoder, the daughter of Michael and Maria Yoder is from Dryhouse Farm, Belleville, Pa., a Registered Holstein farm with 200 milking cows and 450 total head. A student at

Penn State studying agribusiness management with a minor in international agriculture, Natalie plans to enter the agriculture field in the area of sales, marketing, or management. She is interested in jobs that promote agriculture to the consumer as well as positions that provide support to the agriculture community.

Honorable Mentions for the scholarship program were:

- Nicole Arrowsmith, Peach Bottom, Pa.
- Macy Chapman, Taylorsville, N.C.
- Alleigh Johnson, Statesville, N.C.
- Zachary Johnson, Tunbridge, Vt.
- Luke Larson, Okeechobee, Fla.
- Amber MacNeil, Hoosick Falls, N.Y.

The Premier Future Ag Leaders Scholarship Program provides financial support to eligible students pursuing agricultural education, and it also provides additional return to the cooperative's member-owners by supporting the next generation of young people desiring to study and work in the agriculture industry. The Premier Select Sires board of directors has made a commitment to providing money to support this scholarship program on an ongoing annual basis.

• **Round • Square**
• **Rectangle • Angle**
• **Solid Rod • Schedule 40**



Protect your investment!

Triple Coated Galvanized steel tubing...

- Triple coat has the look of aluminum with the strength of steel
- Smooth to the Touch & Easy to Weld
- 50,000 psi minimums for Extra Strength
- Reduce Cost & Increase Productivity
- Just in Time Delivery

We Cut, Swage, Drill, & More... 888-766-2613
info@soncotube.com

Bristol, PA • www.SONCOTUBE.com • Hammond, IN



LB Manufacturing LLC
Hoof Vet Care Chutes • Cattle Chutes
Squeeze Chutes • Headgates • **Milking Parlor** • Bale Movers

LB Manufacturing builds our products with function in mind, and a durability to stand the test of time. Our **Milking Parlor** would be an asset to any dairy farm looking to improve their efficiency. Inquire today to put it into action on your farm!

LS96 Step-Up or Flat Floor Milking Parlor

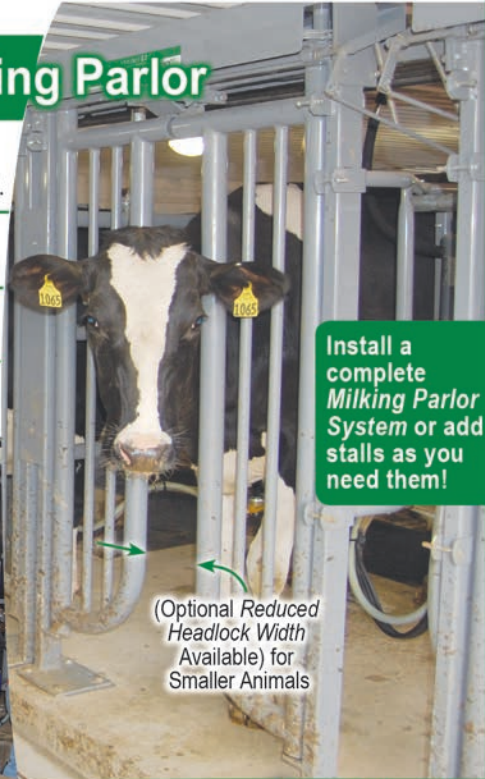
Designed with **automatic close and latch** (activated by the cow's forward motion) and a **smooth operation** makes milking more **efficient**. Convenient release lever permits the cow to exit when finished.

With the **durable design** and **quality finish** you can count on reliability and longevity.

Supports all milking systems with equipment racks and conveniently adjusts to accommodate any milking unit.

The LS96 Milking Parlor is an excellent choice no matter the number of head you're milking.

Questions? Give us a call!



Install a complete **Milking Parlor System** or add stalls as you need them!

(Optional Reduced Headlock Width Available) for Smaller Animals

Single or Double
2, 4, 6 and 8 Stall
Configurations

834 Lambert Rd. • Narvon, PA 17555
Phone: (717) 445-4458

Manufactured for **Function and Durability**

NELSON & SONS
CONCRETE GROOVING

FULL SURFACE & WIDE GROOVING

We've Expanded!

NOW 2 LOCATIONS - PA & NY
2nd Branch Located in Finger Lakes, NY

Serving PA, NY, & Surrounding States

610-589-1030

Save Cows, Save Your Profit Margins

www.NelsonandSonsConcreteGrooving.com

John Wadsworth receives Retired Master Breeder Award

EAST SYRACUSE, N.Y. — John Wadsworth, who made a name for himself and his family with the “Milkworth” prefix years ago, was honored this past January as the 2024 Retired Master Breeder. The recognition was bestowed by the New York Holstein Association during the state convention awards banquet.

Traditionally, the N.Y. Holstein Retired Master Breeder Award goes to a person who has given much to the state association and the entire Holstein breed as well.

John has been a member of the N.Y. Holstein Association for 48 years, a N.Y.H.A. director in 1990, Executive Committee member 1991-94, membership chairman 1993-94, treasurer 1992-93, helping as part-time executive manager 1994-97. He oversaw numerous changes while at N.Y. Holstein, including the transition of the Association from one focused on marketing into one focused on promotion.

Among the results of this change was a Mission Statement adopted at the state convention in 1995:

“To promote the Holstein breed for the financial and social benefit of all members.”

John was instrumental in including more breeds at the New York Carousel, sparking the All-Breeds convention as well as a new logo for the Association. He used to write “The Registered Edge” for *Country Folks* promoting the benefits of owning Registered Holsteins. In addition, he wrote articles for *Hoard’s Dairyman*; *Holstein World*; *N.Y. Holstein News* — “all for the promotion of your cattle! He gave a tremendous

BARGAINS
YOU CAN'T BEAT!

Poly View Agricultural Feed Bins



Advantages of Poly Bins

1. Never rusts
2. Poly View - Always able to see your feed level
3. Minimal or no condensation on the inside wall, totally opposite of metal bins
4. Lasts for many years
5. No salt or mineral problems
6. 10 year warranty
7. All Frames are Hot-Dipped Galvanized



Ulti-Mat All Rubber Cow Mattress Installation

Continuous Cow-Comfort – THE ONLY All Rubber Mattress that recovers to original shape after cow movement.

Superior Continuous Roll Rubber Flooring Available!
Up to 14.5' wide & 150' long.
All NEW Virgin Rubber

Zartman Farms Cow Comfort Systems, Inc.

820 Hilltop Rd., Ephrata, PA 17522 • 717-733-1050
Northeast U.S. Distributor of Poly Dome Equipment • Wholesale & Retail
zartmanfarms@dejazzd.com • www.zartmanfarms.com

MAYO MATS STALL BEDS FOR DAIRY COWS



- No Hock Abrasion
- No Absorbency
- Guaranteed to Stay Soft
- 5 or 10 Year Written Warranty

COW WATER BOWLS



- RP-02
- JN2015

- AU82P



Wholesale & Retail



Daniel's Farm Store LLC

324 Glenbrook Road, Leola, PA 17540
717-656-6982 • Mon.-Fri. 7-6, Sat. 7-12



John Wadsworth received a lengthy introduction by Dave Rama, followed by the presentation of a special painting.

amount of time to all of us as members,” declared Dave Rama in his introduction of the honoree.

Continuing, Rama shared how in 1998, John began working with *Dairy Business Communications* to develop internet sites for breeders and dairy businesses. After his dispersal in 1999, he started *Holstein Central.com* and continued to build websites for breeders and provided news and updates for the industry. “I might add he also developed for The Cattle Exchange the software for our clerking, building a database of over 7000 breeders and producers,” Rama noted.

In 2003 John went on to work for a regional bank as an ag and commercial lender until retirement in 2021.

The Milkworth herd consisted of approximately 55 cows and at the time of the Milkworth Dispersal in 1999 the herd had a BAA of 105.3%, a lactation average of 28,578M 1040F 900P and was averaging 94 pounds a day. At the time, they had bred six cows with over 200,000 pounds of milk and one with over 311,000 pounds Lifetime.

Seventeen Excellent and 108 Very Good cows were bred at Milkworth. The Wadsworths were a 5-time Progressive Breeders Registry (PBR) winner and 9-time Progressive Genetics Herd winner. They showed several grand champions at the Livingston County Holstein shows and one time at the Finger Lakes Regional Show. He was named the Outstanding Young Breeder in 1988.

“But let’s get back to the herd dispersal in 1999,” Rama said. “Greg Coyne couldn’t make it to the sale but asked his friend John Barrett to attend and buy him something. John, the consummate tight-wad, purchased a calf for \$800 and her name was Milkworth Manfred Yadda. I might add, John tried to give me \$10 bids but I would not accept them. Yadda went on to produce at 1-11y 35,730M 4.0% at Coyne’s and they figured out pretty early, this was a family they needed to concentrate on. Yadda went on to score VG-86 and quickly became a GMD & DOM after producing 10 VG and one EX daughter. Numerous grandsons have been placed into AI and embryos exported across the globe from the family.

What Target are you Aiming For?



Hit the Bullseye with Renaissance

www.rennut.com
facebook.com/rennutinc

800-346-3649
instagram.com/rennutinc

All-Ohio awards presented to state's Jersey breeders

By **SUSAN MYKRANTZ**
Farmshine correspondent

URBANA, Ohio — One of the highlights of the Ohio Jersey Breeders' recent annual meeting was the presentation of Junior and Senior All-Ohio Awards for 2023. They were:

Junior All-Ohio awards:

Spring calf: HF Moonshine Virginia, owned by Ella Hershberger; named reserve was: KCJF Dreamster Finders Keeper, Meredith Hageman.

Winter calf: JX DRJ Mr Smith Cupid, Reese Schrock; reserve: Bolle Acres Moonshine Maple, owned by Morgan Richards.

Fall calf: Call-Del Gladiator Amaze, Korbin Kaverman; reserve: HawverCrest Fancy Like, owned by Kelly Hawvermale.

Summer yearling: DKG Joel Kate, Meredith Hageman; reserve: Oakhaven VIP Velora, Joey Ziegler.

Spring yearling: Freedom Lane Kid Rock Goldie ET, Lauren Albright; reserve: AJ VIP 5319 ET, Luke Albright.

Winter yearling: Rivendale Ray F Reno ET, Lauren Albright; reserve: HF Moonshine Marmal, Emma Hershberger.

Fall yearling: Breezy Knoll NL JB VIP Greta, Cam Cope; reserve: BK Mor Big and Rich Foot Loose, Morgan Richards.

Yearling in milk: MM Kid Rock Biscoti ET Joey Ziegler; reserve: Victorious Mabel, Lauren Albright.

Summer junior 2-year old: Miss SP MPH Bontino Becca, Drake Tompkins; reserve: TJ Classic VIP Vera, Alison Francis.

Junior 2-year old: TJ/UF VIP Vera, Alison Francis.

Senior 2-year old: DKG Gentry Secret, Meredith Hageman; reserve: Impression Moana, Lauren Albright.

Junior 3-year old: Andreas Ali, Lauren Albright; reserve: Oakhaven Oscar Candy, Joey Ziegler.

Senior 3-year old: HF Magician Amelia, Emma Hershberger.

4-year old: DKG Colton Cookie, Ruby Herron; reserve: UFashion Comerica Petunia, Lane Francis.

5-year old: Jordan Vapirina, Drake Tompkins.

Aged cow: RRF Classic Tequila Dell, Allison Francis; reserve: TJ/RV Getaway Vera 1587-ET, Lane Francis.

Senior All-Ohio Awards:

Spring calf: Crestbrooke Kid Rock Morocco, Cream Hill Farm; reserve: KCJF Dreamster Finders Keeper, Meredith Hageman.

Winter calf: Stadview Andreas Kennedy, Mill Valley Farms; reserve: Bolle Acres Moonshine Maple, Morgan Richards.

Fall calf: GrammerTime Chocochip, William and Meagan Grammer; reserve: Jasmari Luka Satisfaction, Cream Hill Farm.

Summer yearling: DKG Justice Sunny, Mill Valley Farm; reserve: DKG Joel Kate, Mill Valley Farm.

Spring yearling: DKG Gentry Cream, Mill Valley Farms; reserve: AJ VIP 5319 ET, Luke Albright.

Winter yearling: Cold Run Metalica Marissa, Cold Run Jerseys; reserve: Rivendale Ray F Reno ET, Albright Jerseys.

Fall yearling: DKG Victorious Jackpot, Mill Valley Farms; reserve: DKG Victorious Roxanne, Mill Valley Farms and Breezy Knoll NL JB VIP Greta, Cam Cope.

Yearling in milk: MM Kid Rock Biscoti ET, Oakhaven Jersey; reserve: Victorious Mabel, Williams/Diley/Albright.

Summer junior 2-year old: Miss SP MPH Bontino Becca, Williams Jerseys; reserve: Grammer Time Shut Out Espy, William and Meagan Grammer.

Junior 2-year old: BK Mor Valso Dolly, Morgan Jer-

seys; reserve: JK Dinks Fine Wine, Morgan Jerseys.

Senior 2-year old: DKG Gentry Secret, Meredith Hageman; reserve: Impression Moana, Lauren Albright and Oakhaven Maverick Venza, Oakhaven Jerseys.

Junior 3-year old: Andreas Ali, Williams/Diley/Albright; reserve: Miss Becky Beth, Morgan's Jerseys.

Senior 3-year old: Grammer Time VIP Party Girl, William and Meagan Grammer; reserve: Joel Affair, Williams Jerseys.

4-year old: McGuires Getaway Sammi, Kyle McGuire; reserve: DKG Colton Cookie, Cold Run Jerseys.

5-year old: Jordan Vapirina, Williams Jerseys; reserve: Underground Natsha Mamie, William and Meagan Grammer.

Aged cow: DKG Motion Jolly, owned by Jim, Jodi and Marissa Bolen; reserve: J-Kay Excitation Fuzzy, Morgan Jerseys/Breezy Knoll Farm.



Illness from page 7

plans and receive specific guidance on sample collection as data-driven diagnostics are key to evaluation and understanding transmission and prevention.

As this work is being done, dairy producers are advised to review and implement biosecurity protocols for their farms, take note of declines in production, appetite and rumination, and contact their veterinarians if such are noted.

(Author's note: Veterinarians in commission, diagnostics, and as practitioners are working on this as they are committed to animal health and well being as well as food safety -- and while this is happening, systems are already in place that make the U.S. food supply the safest in the world.)

UNIQUE EAR TEMPERATURE TRACKING

Stay ahead of the herd with our unique cow monitoring system. CowManager's ear sensors measure ear temperature combined with behavior, resulting in more accurate and earlier alerts. Never miss a heat, identify at-risk cows in the dry period, and catch diseases before a cow even shows clinical signs.

www.cowmanager.com



Sire The Need[®]
Animal Analysis Associates
aAa Weeks
Michael McCaffrey, Analyzer
Mobile: 315-447-4699 • Mike.McCaffrey@aAaWeeks.com
58 James Street, Homer, NY 13077 • www.aAaWeeks.com



Contact your local Select Sires rep and ask about CowManager today!

Premier Select Sires
(800) 227-6417
premierselectsires.com

Select Sires Member Cooperative
(614) 878-5333
cobaselect.com

*CowManager is a registered trademark of Agis Automatisering.

New York Holstein members honor Dave and Merry Rama

Editor's Note: Following is Patsy Gifford's review of her presentation of Dave and Merry Rama when the couple was honored at the New York Holstein Convention awards banquet held on January 15 at the Hilton Garden Inn, East Syracuse. Patsy is a former executive director of the Association and continues to help guide its programs and success.

We all know that it's not easy to get one over on Dave Rama. Our Master Breeder Committee kept this presentation very close to their pocket in the hope that we might be able to surprise both Dave and Merry.

Dave has been our Convention Banquet MC for many years. Each year, as we sit down to dinner, he and I review the program so he knows all the names, etc. Friend of New York Holstein is the last presentation.

He asked me who it was this year and I fibbed a little and said we didn't choose one this year but forgot to take it off the program. He scratched it off on his program. As we finished the other presentations, he said to me "that's it, right?"

I said I had one more little announcement. I may never totally surprise Dave and Merry again, but it sure was fun that night. And in their typical fashion, their appreciation was sincere and joyful.

This year's Friend of New York Holstein has been a friend to all of us for many years.

When I came on board in 2001, our sales were floundering as was our treasury. New York, always the cradle of the breed, was gaining significance as a hot spot for some of the premier genetics in the country.



Proud and pleased with the Committee's selection for the Friend of New York Holstein Award, Patsy Gifford introduced Dave and Merry Rama.

It seemed logical to re-energize our N.Y. cattle sales. Also, right here in N.Y., was a cattle sale service that was leading the field.

I barely knew Dave and Merry Rama, but we soon became close friends and trusted partners in selling New York Registered Holsteins.

The rest is pretty much history. Along with

showcasing our N.Y. genetics by buying and selling N.Y. Holsteins, The Cattle Exchange made it possible for our Association to earn a tremendous amount of money as well as

put money in many members' checkbooks.

One sale high point was our 2016 National Sale that averaged more than \$25,000 and set an all time high average for a National Sale. Another was in 2012 when N.Y. Holstein had the 1st, 6th and 7th highest averaging regional sales in the country with our ET Sale, Harvest Sale, and Carousel Sale, respectively. All were managed by The Cattle Exchange.

Dave and Merry helped us gain recognition as a powerhouse of Registered Holsteins as well as helping us economically. They became our very close friends ... and probably as good a friend as New York Holstein has ever had with their commitment, dedication and business sense to help our bottom line year after year.

This year, when our beloved friend Horace Backus needed someone to intervene and assist with his memorabilia, the Ramas stepped in to haul the mountain of stuff from Mexico, N.Y. to Delhi, N.Y. We then got together and organized and arranged its sale as you've seen right here at our convention.

I could go on and on about the acts of kindness and friendship that this couple, who are the epitome of a team, have shown to so many people. We are grateful that New York Holstein has for many years been on the receiving end of a wonderful friendship.

Ladies and gentlemen, please join me as we, with great honor, present this year's Friend of New York Holstein award to our dear friends, Dave and Merry Rama.

CERTIFIED ORGANIC CATTLE WANTED

NICHOLAS MEAT LLC

Modern Meat Processor Paying a Premium For Your Certified Organic Cattle

Purchasing on Dressed Weight and Grade Basis

Nicholas Meat LLC is an approved Certified Organic Meat Processor. We are looking to purchase all your Certified Organic Cattle. Customers can deliver cattle to the plant Monday through Friday 7 A.M. to 1:30 P.M. Nicholas Meat LLC has also established several collection points.

Cattle can be taken to:

Vintage Sales Stables, Inc.

3451-3457 Lincoln Highway East, Paradise, PA 17562
Every Thursday from 9 A.M. to 3 P.M.

Weikert Buying Station

721 Carrolls Tract Rd., Fairfield, PA 17320
Mondays from 9 A.M. to 4 P.M.

New N.W. Sales Company

2006 Mercer-New Wilmington Rd., New Wilmington, PA 16141
2nd and 4th Monday of each month.

Belleville Livestock Market

26 Sale Barn Lane, Belleville, PA 17004
Every Wednesday.

R&C Calf Farms, LLC

13071 Emerson Rd., Applecreek, OH 44606
Mon. -Thurs. 9 A.M. to 2 P.M. (Behind sale barn in Kidron)

Please bring a copy of your Organic Certificate with each shipment!

Please call the number below to inquire about these collection points or to schedule your sale of Certified Organic Cattle to Nicholas Meat, LLC.

NICHOLAS MEAT LLC

508 East Valley Road, Loganton, PA 17747
Please call Nicholas Meat LLC – 570-725-3511



A TALE OF TWO CHAINS

HOWEVER YOU CLEAN – TRUST THE CHAIN THAT'S BEEN CLEANING THE LONGEST!

Contact your local Patz dealer for current pricing and promotions.



INTELLICHAIN & MA-12



HOWEVER YOU CLEAN – PATZ HAS YOUR TECH!

400 GUTTER CLEANER & HOOK-&EYE CHAIN



PATZ CORPORATION | POUND, WI
920-897-2251

PENNSYLVANIA

Mercersburg	Cedar Crest Equipment LLC	717-660-0060
Myerstown	Cedar Crest Equipment LLC	717-866-1888
Quarryville	Cedar Crest Equipment LLC	717-529-2782
Troy	Fallbrook Fabrication	607-426-0592

VIRGINIA

Harrisonburg	C&C Farmers Supply Corp.	540-433-8532
--------------	--------------------------	--------------

NEW YORK

Collins	A.R. Timmel	716-532-2040
---------	-------------	--------------

Territory Sales Manager

Paul Kratz • 920-897-9212
paulkratz@patzcorp.com





Classifieds

"Say you saw it in FARMSHINE"

1 Services

FARM INSURANCE: barns, equipment, hay and grain storage, Workers' Compensation, farm stands and stores, vehicles and farm homes. N.Y., Pa. and Va. Call Alec Pandaleon at 845-242-0113.

AG PHOTOGRAPHER - senior, family, natural cattle portraits. Sales, herd dispersals and ag event photography coverage and albums. Based in Lancaster, Pa. A Farmgirl's Dream Photography. 717-824-1320.

BALING SERVICES - CUSTOM 3x3 and round baling, along with individual wrapping. Out of southern Lancaster, Pa. 717-826-3775.

REPAIRING ALL KINDS, makes and models farm machinery, specializing in discbines, pull type harvesters and corn planters. Also general welding. We also repair older tractors. Harsue Repair, New Holland, Pa. 717-355-0715.

BOB & MILLIE'S DISCOUNT signs. The cheapest guys in town. Free delivery on all sign orders. bobthesignman@yahoo.com. Real Estate-Construction-Banners-Yard Signs-Decals-Magnetic Signs-End of Lane Farm Signs. appletreesigns.com. 410-708-1341.

COMPOSTECH LLC. IS A local Honey Brook business, making and selling organic

compost at \$30 per cubic yard. Call Dave at 610-441-5154 to schedule a pick up. Also taking horse manure for free, must be dropped off.

LOWER SCC & IMPROVE conception. Highly effective, 35 years of time tested results and satisfied dairymen nationwide. No withholding ever feed additive, low cost. Call AG, Inc. today. 920-650-1631. www.alphageneticsinc.com

DAIRY PRODUCER - would you like to lower SCC and mastitis rates, provide milking training, breach the language barrier and improve parlor performance? Call Adolph Dossman at 240-286-8996.

INNOVATIVE DAIRY Nutrition - specializing in forage planning to maximize production and optimize herd health through advanced nutrition. To improve your profits, contact Matt at 717-729-4530

REDUCED PRODUCTION? Heat stress? High SCC? Scours? Proven effective solutions to your herd's health needs, no withholding. Call the Dairyman's Helper. 800-829-7512.

CUSTOM COLLECTING - Call for prices. 301-491-3154. Triple-Hil Sires.

RELIEF MILKING-farm sitting. Tie stall or parlor. Feeding and young stock care. References available. Adrian Horning 717-466-9099. South-Central, Pa.

KANN'S MILKING SERVICE Franklin & Cumberland Co. 30 years experience, references available. Ryan L. Kann, 717-816-1920.

BARN FULL? WITH 8+ years experience raising heifers, I am the solution to your problem. Space available now. Call today to discuss this opportunity. 717-860-8867.

CUSTOM HEIFER RAISING. Weaned calves to calving. 19 years experience. Modern housing, free stalls, AI breeding, TMR, monthly vet visits. Lebanon Co., Pa. 610-451-3006.

GARDNER CUSTOM HEIFER raising. 40 years experience. TMR in fenceline feeders with lockups, dairy veterinarian manages, adolescent to springers, competitive prices. 540-871-0246, dlgrar@aol.com, gardnerheifers.com.

CUSTOM HEIFER RAISING. 300-400 head capacity. AI breeding, hauling available. We do not have state of the art facilities but are committed to an accelerated feeding program. Call for pricing. Reach us at 240-291-0286.

HEIFER RAISING SERVICES offering full health care program, excellent AI breeding program, activity monitor collars, balance ration, pasture for older heifers. Lancaster Co. 717-940-9435.

CUSTOM HEIFER RAISING. Good quality forages. Minerals and hay in TMR. Room for 150-200 head. Troy area. 570-220-4542.

HEIFER BOARDING - Sand bedded freestalls. Corn silage haylage and hay in-

Lean 85-90% lean	60-115
Bulls:	
2-3	108-154
Calves: 132	
Feeder calves:	
#1 Hol bulls	500-675
#2 Hol bulls	350-660
#3 Hol bulls	200-650
Utility bulls	60-285
#1 Hol heifers	350-500
#2 Hol heifers	275-375
#3 Hol heifers	135-225

Morrison's Cove	
Martinsburg, Pa.	
March 18, 2024	
Cattle: 77	
Steers:	
Choice	176-183
Good	120-165
Heifers:	
Choice	173-181
Good	135-150

Cows:	
Util/Commercial	100-117
Can/LoCut	105 & down
Bulls Y/G #1	130-139
Feeder cattle:	
Steers	150-270
Bulls	150-270
Heifers	70-250
Calves: 106	
Standard	5-150
Hol bulls	150-680
Hol heifers	200-500

Wyalusing Livestock	
Wyalusing, Pa.	
March 18, 2024	
Holstein calves:	
70-89 lbs.	2.00-4.25
90-110 lbs.	2.50-4.75
Feeders:	
200-300 lbs.	.90-2.05
301-500 lbs.	.75-1.95
501-700 lbs.	1.10-2.12

Free ice cream

NEW HOLLAND SALES STABLES, INC.

Free ice cream

Located 12 Miles East of Lancaster, PA. Just Off Rt. 23, New Holland

DAIRY COW & HEIFER SALE

WEDNESDAY, MARCH 27TH • 10:30 A.M.

All consignments welcome. Cows - Heifers - Bulls.

Quality fresh cows and well-grown heifers are selling at an All Time High!

Consignors: Please send all info with truckers for the catalog.

For more information, contact dairy reps:
Aaron Martin, 717-445-4825 (home); Bill Hough, 973-224-0204 (cell).

Thank you - N.H.S.S.

REMINDER:

Friday, April 5th, 6 p.m. Spring feeder cattle sale.

Sale Managed By
New Holland Sales Stables, Inc.
Barn 717-354-4341 Fax 717-355-0706 • David Kolb, Mgr. 61L

BRUBACKER'S QUALITY DAIRY SALES

10 BROWN ROAD, SHIPPENSBURG, PA

Thursday, March 28 @ 10:30 A.M.
ND-Druvale Red & White or RC Reduction Sale!

- ★ **Nd-Druvale has decided to downsize their herd and sell some of their exciting breeding stock!** If you're looking for EX cows to build up your herd, or some young heifers to breed and show, you don't want to miss this opportunity! 100-120 head sell! **Many descendants of EX-93 Uno Sissy (pictured below).** And all go back to **Citation Roxy EX-97!**
- ★ **Jasper (pictured below) is dam, mgd or mggd to many that are selling. EX-93 with EX mammary.** Sons in AI and 50 plus embryos exported overseas!
- ★ **Lot 1: Nd-Druvale TWT Carli-Red-ET GTPI +2923 PTAT! Born 4/8/23 Reg. # 3251679273.** She is the #1 Red Twitty daughter and has interest from major AI companies for Red sons! Dam is just fresh x VG-86, x EX-93 x VG-89 x EX-93!
- ★ **Lot 2: ND-Druvale TWT Cove-Red-ET.** Born 3-11-23, Reg. #3251679268. She is a full sister to Lot 1 and is the #2 Red Twitty daughter!
- ★ **Lot 3: Aspiration session from Nd-Druvale Twitty Tierra-ET RC!** Reg. #3251679260 GTPI +2927 Ptat. 1.88 Milk +824, +.24F +101 lb., +.06P 44#. **Make your own high Red calves with the #3 Twitty in America!**
- ★ **Lot 7: ND-Druvale Gameday Janie GTPI +2893 PTAT 1.80, Red carrier! Sells just fresh and very fancy!** Her calves are being tested for Select Sires! Dam VG x EX-93 x VG-89 x EX-93!
- ★ **Lots 8A + 8B: born 5/16/23.** Twin Lionel sisters to lot 7. Leawood is RC and GTPI +2769! Lennon GTPI +2734 PTAT +1.89!
- ★ **Selling daughters by Ranger-Red, Network-Red, Lucid-Red, Trojon Rc, Haze P RC, Rebel-Red, Rubels-Red, Bomaz Rc, Gameday, Conway, Perfect, and Kahn! Most animals are Red or Red carrier!**
- ★ **EX-90 Humblenkind sells just fresh,** along with her Red Ranger daughter born 1/29/23! **Dam EX-93 Jedi x VG-89 Olympian x EX-93 Uno!** GTPI +2717 PTAT +2.10.
- ★ **GP-84 Crimpson sells w/ Fancy Red daughters by Ranger! Dam EX-93 x VG-89 x EX-93!**
- ★ **EX-91 Jedi sells due at sale time w/ a fancy, fresh, Red Lucid daughter and yearling Perfect heifer!**
- ★ **EX-92 Salvatore peaked at 150 lbs. and sells on service to Gameday!** Dam and mgd. are VG-87.
- ★ **RC Kahn x GP-82 Swingman x VG-85 x VG-89 x EX-93.**
- ★ **RC Perfect x EX-90 x EX-90 x VG-85 x EX-93.**
- ★ **Sept. 23 Haze Joyous-Red by Aot Red-eye Haze!** Dam VG-85 x EX-93 x VG-89 x EX-93.
- ★ **Polled, Red and fancy, ND-Druvale Haze p Honey-Red sells x VG-88 x EX-93!**
- ★ **2 R&W bulls with high genomics!**

Also selling exciting consignments from:

- ★ **Wa-Del Holsteins** - 10 fresh 2&3 yr olds
- ★ **Joel & Sarah Mills** - 5 fresh 2 yr. olds
- ★ **Tom Mercurio** - Rae-Mew Shimmer Ruby-Red sells fresh 3/2/24! Dam VG-86 x EX-93 x EX-92 x EX-91 X **Scientific Rubirae Socks EX-93** 5-08 365 43,050 4.2F 2.8P!
- ★ **Rae-Mew Talon Ruth sells due 3/15/24 w/ 1st calf!** Dam EX-91 x EX-93 x EX-92 x EX-91 x EX-93 Socks!
- ★ **Rae-Mew Jrdy Rihanna-Red EX-90 sells due in July w/ 3rd calf!** Dam EX-93 x EX-92 x EX-91 x EX-93 Socks!
- ★ **Rae-Mew D-Lambda Rae Dema sells due 10-9-24 to sexed Dropbox!** Dam Scientific Rubirae Socks EX-93!
- ★ **Nevin Kuhns 2 head**
- ★ **Eric Niswander, El-Quest Brooke P-Red sells due 12/28/23 to sexed Tango-Red!** Dam EX-92 5-07 352 30,210 5.0F 3.6P X VG-88 x VG-85!
- ★ **Easy Girl Faja Frosty born 7/30/23! Dam VG-88 2-02 313 15,510 4.8F 3.8P! Mgd. EX-93 4-05 365 42,480 3.4F 2.9P! Mggd. EX-90 4-00 332 31,290 4.2F 3.1P! 4th dam EX-97 Harvue Roy Frosty 5-07 365 44,710 5.0F 2.8P!**
- ★ **Reg. Chrome Jersey fresh in 2nd lac.!** Dam Andres Sweetheart. Mgd. M-C Tequila Summer - GC Yrlg at Harrisburg.



NOTE: Need that special cow or heifer? This should be the sale! High type, lots of milk, and good genetics all met together to create this opportunity for you!
All cattle vet checked and vaccinated. Trucking available.
Can't make the sale? You can participate online at Cowbuyer.com!
For Cowbuyer questions, call Katie Shultz: 717-543-7883.

<p>Auctioneer/Sale Staff Jason Brubacker Lic. AU5608 717-729-0173</p> <p>Nolan Druist (Owner) 814-285-6623</p> <p>Matt. Zimmerman (Ringman) 717-222-0101</p>	<p>*EX-93 dams & gr dams of many on sale*</p>	<p>Sale Barn Ivan Brubacker 717-414-6657</p> <p>Pedigrees John Burket 814-381-9070</p> <p>Catalogs by Daniel Brandt 717-821-1238</p>
--	---	--

Due to Good Friday (March 29th) we ask that all cattle are picked up sale day or arrangements are made to care for them. Thank-you.

cluded. \$2/hd/day. 607-382-3633.

HORSE BOARDING available, Willow Street, Pa. area, Lanc. Co. 717-380-7612.

ADAM'S HOOF TRIMMING. 22 years of experience. 717-813-1358.

MID-ATLANTIC HOOF TRIMMING - providing farmers professional hoof care in Maryland, Virginia, Pennsylvania and surrounding states. Call Mikey Barton at 518-567-8046 today for inquiries/scheduling.

HASTINGS HOOF TRIMMING is looking for clients in Pa., N.Y. and Ohio. Call or text 315-283-2717 for a quote.

CATTLE HOOF TRIMMING, Western, Pa. Stand up chute, over 10 years in business. Looking for new clients. 814-279-7932, ask for Russell.

TSHUDY'S HOOF TRIMMING. Quarryville, Pa. Serving Southern Lancaster, Chester and York counties since 2003. \$11/cow, free wraps. Hydraulic tilt table. 717-917-8715.

STAND UP HOOF TRIMMING. Two man trimming crew, excellent cattle flow. Serving South Central Pa. and surrounding counties. Will travel for large numbers. Call Matt Weaver at 814-793-9966.

HOOF TRIMMING Service. 717-755-0770.

PHILBRICK'S HOOF TRIMMING serving western and central Pennsylvania, western New York and eastern Ohio. 814-720-0010.

HOOF TRIMMING - Garrett Co., Md. Tilt table. Willing to travel distances for large groups/herds. \$10/cow. Trained at Dairyland Hoof Care, Wis. Call 301-616-2195.

HOOF TRIMMING SERVICE - providing quality service for large and small dairy and beef herds. \$10 per cow. Graduate of Hoof Care

Institute. Stand up chute. 315-573-6742.

MACIK HOOF TRIMMING - Beef and dairy cattle. Hydraulic tilt table. Serving Western PA, Eastern OH, Northern WV. Phone 724-345-8501.

PROF. HOOF TRIMMING - RSW Farms LLC. Hydraulic table, competitive rates, serving MD/PA/NY. Contact Ryan 518-935-7704 or RSWFarms@yahoo.com.

MIKE'S HOOF TRIMMING - Since 1988. Hydraulic table. 814-997-9021.

PROF. HOOF TRIMMING - call for more info/available dates. 570-690-1017.

SHUMAN'S HOOF CARE - Serving dairies in Northeastern & Northcentral Penna. and the Finger Lakes region of N.Y. Call Tom, 570-418-1684.

CORRECTIVE HOOF TRIMMING - New Tuffy-tilt table. Cow comfort, professional work. Call Sam Beiler 717-222-6180.

NEED YOUR COWS clipped? Call 717-768-8345 ext 1.

STRUGGLING WITH MICE and rats? Try First Strike. Oregon Ag LLC. Call 717-656-0067.

DEAD ANIMAL REMOVAL. Call Mike at 717-855-5503.

DEAD ANIMAL REMOVAL. Removal of dead farm animals. 717-228-9500. M-F 8-4, Sat. 8-11 or text.

LIVESTOCK HAULING Local/long distance. Pa., N.Y., Ohio, Va. 814-592-2543.

SILO DEMOLITION. 717-786-6063.

HARVESTORE SILO REPAIRS, extensions, and roof replacements. Call us at 717-786-6063.

NEED YOUR EQUIPMENT, building or house pressure washed? We have the equipment to do the job. Call us at 717-644-6295.

DAIRY SERVICE TECH - servicing all brands of dairy equipment. South central, Pa. Wes Sollenberger, 814-505-6304.

CUSTOM COMBINING services. Well maintained equipment. Reasonable prices. Call 315-573-6742 for more information.

RESTORING GRANDPA'S old tractor doesn't have to cost an arm and a leg! Full service repairs and restorations. Agriculture and industrial repairs. York Co. 717-368-1354.

FARM MACHINERY REPAIRS, NH small square baler parts, Discbines, Haybines, rakes, feed mixers, discs (new blades), forage harvesters and more. 607-243-5896.

DISCBINE DOCTOR - Repairing all makes. Buying & selling. After market cutter bar, bearings, or NH/JD/Kuhn and used parts. Call ahead 717-768-7542.

SERVICE DONE ON ALL brands of fence energizers and battery chargers. Call Sensenig's Electronic Repair 717-445-9905 for your repair needs.

3 Dairy Equipment

1600 OH MUELLER, 2 compressors, side mount washer; 900 OH Mueller 1 compressor, washer. 814-931-5860. (4/5)

PV 300 PIPELINE, 300 FT. with four unit 415 gal. tank - the works. 814-796-2389.

USED RISSLER WOODEN conveyors, 32 ft. with drive, 30 ft. no chain, no drive. \$600. 814-404-4662. (4/5)

BUCKET MILKERS - 3 DeLaval and 4 Surge, pails

and strainer. Western New York. 716-200-6354. (3/22)

NEWLY REBUILT GAULIN 200E milk homogenizer. Rated for 200 gallons per hour. New pistons, valves, seals, gauges, etc. Asking \$29,500. Call Randy at 814-663-0921. (3/22)

SELLING CONTENTS OF homemade ice cream shop and plant equipment, various cabinets, bulk tanks, vats, etc. Please contact Michele at 570-878-6100. Scott Township, Pa. 18447.

WESTFALIA SURGE autotandem milking parlor, good condition. 2x4 stalls, metatron meters, 5 hp variable speed vacuum pump, plate cooler, receiver. All for \$8000. 570-809-6567.

20 DAIRYMASTER pulsators, takeoffs, sensors and complete claws. Will not part out. Willing to meet within reasonable distance. Call 814-329-5176 for information. (4/26)

60 STURDY BUILT STALLS, \$1600; 60 cow comfort cow mattresses, \$500; stainless steel pipeline for 60 cow tie stall barn, \$1500. You remove and haul. Call Jeremy at 717-437-5215. (3/29)

4' X 6' COW MATS. GOOD mat for the money and easy to install. \$80 each, including hardware. Call 717-304-6684.

USED MILK TANKS - 375 gal. Milkeeper; 600 gal. Mueller M; 800 gal. Mueller OH; following tanks are storage only: 1500 gal. Mueller O; 800 gal. O. T. H. Horning. 717-438-3104.

GUTTER GRATES FOR tiestall barns. Innovative design prevents hoof injuries. Call for more information and current pricing. 717-464-6476.

SOYBEAN ROASTING ON YOUR FARM

- Full-fat roasted soybeans for maximum feeding value
- High-energy, bypass protein and palatability
- Toxic enzymes and molds destroyed
- Custom roasting in MD, DE, PA & Southern NJ

HORST GRAIN ROASTING
Chester Co., PA
(717) 926-4310

Precast Systems, LLC
Producing concrete since 1923

**FEED BUNKS
BUNKER SILOS
CATTLE GUARDS**

NCPA certified plant
Installed on site
717-369-3773
www.precastsystemsllc.com
5877 Bullitt Rd. Greencastle, PA 17225

DEWART LIVESTOCK MARKET
~Since 1940~
2345 Turbot Ave. Watsontown, Pa.
1 mi. E of Allenwood off Rt. 15. Just minutes off I-80.

MONDAY, MARCH 25 1 P.M.

SPECIAL DAIRY SALE

75 HEAD COMPLETE MILKING HOLSTEIN HERD DISPERSAL

Herd consists of 65 milking age. This is a spring freshening herd. 20 fresh in last 60 days. Tie stall cows that go outside everyday.
45 dry cows due in next 60 days. Fancy udders. Mostly coming 2nd & 3rd calf. Closed herd for 30 years.
10 fancy springing heifers. Farming accident prompts this fine dispersal!

ALL CONSIGNMENTS WELCOME

HAY SALE AT NOON, FOLLOWED BY REGULAR MONDAY SALE OF CALVES, FEEDERS, GOATS, SHEEP, HOGS, BULLS, & BEEF COWS.

Adam Fraley (570) 772-6837
AU003538L

1515 Kepner Hill Rd. Muncy, PA 17756
570-546-6907 | fraleyauction.com

4 Dairy Cows

YOU PICK 10-12 FROM our 100 cow milking herd. 50+ first calf heifers. Very versatile, will work in tie stall or free stall. \$2800. 570-396-9826. (4/12)

CERT. ORGANIC COWS. 570-250-1725. (4/12)

TIE STALL COWS-24 REG. Holsteins, 5 Jerseys (3 Reg.), SCC 99,000. 814-267-3875

BUYING AND SELLING dairy herds, heifers and service bulls. Aaron Coons, 717-816-4118.

JUST FRESH, 1ST LACTATION Reg. Holstein cows. Good quality, well grown animals. 3-4 generally available each month. Call 570-297-5118.

THE VAST MAJORITY of dairy farm families in the Middle Atlantic area read Farmshine every week.

6 Dairy Bulls

POLLED HOLSTEIN AND Jersey bulls, ready throughout spring and summer. Some homozygous polled. All from good pedigrees. Elquest Polled Holsteins and Jerseys. 717-320-3330.

POLLED, RED, A2A2 Risk P son. Maternal brother to Panic PP at Triple-Hil Sires. DOB 2/24/23. \$2000. 717-320-3330. (3/29)

OCEAN-VIEW SEXATION grandson. A2A2, proven breeder, ready for cows. Dam Joseph dau. with 31,000 lbs. with 4.1 BF 2nd dam Redman, 27,000 lbs., 4.7 BF 3rd dam Advent. 4th dam Shottle from the Gloryland Liberty Rae family. \$2375. Martin-Dale Holsteins, Lancaster, Pa. 717-445-6548. (3/22)

B&W AND R&W POLLED homozygous Holsteins, A2A2. Some genomically tested also. Lebanon Co., Pa. Con-Ger Farms. 717-821-1454.

WANTED - Reg. Jersey bull, 12-15 mos. old. 856-478-2942.

REG. HOLSTEIN BULLS for sale. Ar-Joy Farms, Cochranville, Pa. 610-637-7423.

HOLSTEIN BULLS ready for free stalls and younger. High genomic tested bulls from contract matings and high type cow families. 610-932-6062. Call between 8:00-8:30 a.m.

BULLS FOR SALE & LEASE - Reg. Holsteins, any age out of dams with records to 30,000M, 1200F. Stump Acres. York Co. Call 717-792-3216.

7 Semen, Embryos

HELSEL-HILL HAS expanded. Call or text Keith Helsel for No Bull sires, Blondin sires, Resolution-Red, Furnace Hill Zas Endure, and more. 814-515-5455.

For Sale

3600 Kinze 12 row corn/23 row soybean planter, swing frame with GPS air seed shut off. Excellent condition, always shed kept. Ready to plant.

Contact Zartman Farms
Tom Zartman 717-468-4559

FINE GROUND Wood Bedding

Dry, Absorbent BEDDING For Sale

14 yd, 30 yd, and 110 yd loads
Call for Pricing

Buy in bulk and save!

BEILER INDUSTRIES 717-768-7667

Dealer Inquiries Welcome

We Ship Parts

ALL PLASTIC CONVEYORS AVAILABLE
Good for Under Silo Unloaders Or Any Wet Place, In 18", 24" & 30"
Also Available: Standard Wooden Conveyors And Feeders
In Business Since 1965
717-336-2244
RISSLER CONVEYORS, LLC

Replacement Silo Doors

Many Kinds In Stock	Silo Door Hardware
<ul style="list-style-type: none"> • Marietta • Fickes • Madison • Terre Hill • Lancaster • Ribstone 	<ul style="list-style-type: none"> • Butterfly Hinges • Latches • Steps • Ladder <p><i>Silo Doors Made To Order Bring Pattern of Old Door</i></p>

Willow Road Silo Doors

Daniel Beiler
624 Willow Road
Lancaster, PA 17601
717-394-1004

WHOLE SHELLED CORN

• WHOLE COTTONSEED • CORN • 48% SOYBEAN MEAL • ROASTED SOYBEANS • CANOLA MEAL • LINSEED MEAL

TRIPLE • M • FARMS

Custom Feed Mfg.

WE MIX FEED ACCORDING TO CUSTOMER AND NUTRITIONIST FORMULAS

Also Available:
BULK COMMODITIES

Call Us At:
(717) 272-3225

MINERALS NON-GMO

• TURBO MEAL • AminOisic • BLOOD MEAL • BEET PULP • FATS •

3/32" FINE GROUND CORN

CUSTOM COLLECTING - WE custom collect your bull at our facility. Semen is processed with high quality standards at very competitive rates. We also offer short-term housing options during collection. Triple-Hil Sires 855-955-2100.

DONEGAL-CREEK BAXTER Pedro-ET, reg # 139932533. He is EX-94 AAA (4352). From 5 EX dams- 94, 90, 91, 91 & 95. Dam is 94 pt. Outside daughter, still in herd at 10 yrs. old & looks half her age. Sire stack is Baxter, Outside, Rudolph, Conquest, Starbuck, Citation R, Elevation. Very well balanced bull siring the right kind. Strength with dairyness. High pro-

17 foot Goliath Unloader, good condition. Call 717-363-6741

ductive life, low SCC, high conception. Early daughters are milking great & look better than their dams. Priced at \$14 for 20 units or more. Joe Wivell 717-471-5260.

9 Equipment & Machinery

2012 CLAAS JAGUAR 930 forage harvester. 494 series, 4WD, 2665 hours. Inspected with repairs - new shearbar, blower paddles, plus more. Corn and grass heads available. \$137,500. 717-400-7917. (4/5)

HAY/PICK-UP HEADS for self-propelled forage harvesters. Inspected and serviced. For Claas, John Deere, and New Holland. Corn heads also available. For details call 717-400-7917.

GEHL 1540 SILAGE blower, \$400 OBO; antique John Deere 1 1/2 hp hit and miss engine, \$775 OBO. 973-703-5148.

NEW HOLLAND 3PN corn head for FP240 harvester. Nice, original condition, field ready, late model. Call for more information. \$8900. 717-351-0353.

2017 MCHALE VALERO round baler with wrapper, only 1600 bales, heavy duty pickup package. \$107,500. 859-608-9745. (3/29)

RISSLER 1 YARD self-unloading skid loader bucket with 8" unload auger. Call 717-463-9731.

FOR RENT: E RISSLER 330 trailer TMR mixer, \$30/day; IH Rissler 510 TMR cart, \$10/day. Delivery avail. Myerstown, Pa. 484-793-2179.

ROOFERS BUGGY-RENT for \$125/day or \$500/week. Lancaster Co., Pa. Call 717-808-4155.

10 Feeds

1ST, 2ND & 4TH ALFALFA tested, 3x4x8' Chinook dried

straw. Delivered or FOB. 610-767-2409, heidelhol-lowfarm.com.

BUYING DAMAGED GRAIN. Trucking is available. Call 717-575-5197.

CERTIFIED ORGANIC KELP meal. Redmond minerals. Dealers available in select areas. Hess Farm Supply. 717-354-9492.

FASTRACK - Improve milk production, increase feed utilization and improve herd health with Fastrack direct fed microbials. Contact Karl at 740-504-2859 or email klbss@columbus.rr.com.

11 Hay

GOOD QUALITY GRASS hay. Small square bales. Wyoming Co., Pa. 717-250-1399. (3/29)

CERT. ORGANIC 1ST, 2ND and 3rd cutting balage in tubes, individual wrap if needed; 4x5 dry round bales

heifer dry cow hay. Delivery available. 570-250-1725.

ALFALFA BALEAGE, 4x4 wrapped round bales, \$50 each. Also, small square bales alfalfa or grass, various prices. Richard Trinca, 814-349-8010. (3/29)

HIGH QUALITY 1ST & 2ND cutting grass hay, 3x3x7 bales, low potassium. #1 hay, tested. Lebanon Co., Pa. Con-Ger Farms. 717-821-1454.

CERTIFIED ORGANIC mixed grass and clover hay. Call from 7a.m.-4 p.m. 717-463-9731, leave message.

ROUND BALES OR LARGE squares. Delivered by ton loads. Coons Farms. 717-816-4118.

HAYBUSTERS - Dairy and beef quality alfalfa, low K hay and straw. Large and small squares. Call Mark at 800-371-7928, or visit www.haybusters.com.

12 Straw & Bedding

CHOPPED STRAW in 3x3x6 bales. Good for bedding or TMR mixers. Available now. Lebanon Co., Pa. Con-Ger Farms. 717-821-1454.

HIGH QUALITY SAWDUST available for delivery. Great sawdust for dairy and beef cattle. Call 301-334-6212 for delivery range, pricing and availability.

USE BALED SHAVING in your dairy barn. You'll love this very fine pine bedding. \$5.50/ 40 lb. bag. 610-273-3602.

SOLLENBERGER SILOS

5778 Sunset Pike Chambersburg, PA 17202

Poured Concrete Silos for Farm and Industry Since 1908

For information call: **Ken Mansfield 717-503-8909**

www.sollenbergersilos.com

HAY OR STRAW-any type or quality. Call 717-253-6049 for pricing.

15 Vehicles & Trailers

TRAILER PARTS, TOWING accessories, trailer hitches, and cushion hitches. UPS to your door. Weaver Distributing. 800-Weaver-D. Save!

16 Fencing

TIMELESS FENCING - The post is the insulator. Versatile design is self-insulating and easy to install for sheep, goats, cattle & horses. Allegheny Meadows. 814-285-1541.

17 Silos

SILO UNLOADER WINCH; Harvestore silo sheets. 717-363-6741.

USED A.O. SMITH model 1250 Slurry Pump with agitation nozzle and load out line. 717-463-9731.

SILO DEMOLITION. Contact Beiler Silos. Call 570-745-3574.

HARVESTORE SILO ROOFS, affordable white or stainless. Solve spoilage. Sheet replacement, silo demolition. Parts and repairs on Harvestore and stave silos. 717-517-2080.

HARVESTORE SILO REPAIRS, also demolition and removal. Used replacement blue or white silo roofs, door frames, doors, lids, breather bags. Installation available. 717-768-0452.

BEILER SILOS - SILO PARTS, sales and service. New and used silos. Shotcrete relining. Foundation repair with Shotcrete. Tear down and rebuild. Silo doors made to order. 20 years experience. Serving Lycoming and surrounding Co. Jersey Shore, Pa. 570-745-3574.

I BUY USED SLURRY-STORES. 315-404-6721 or 315-495-6506.

Zuck Registered Holsteins Complete Dispersal

On the farm at 135 Fox Rd., Lebanon, PA 17042

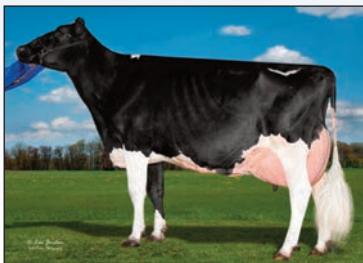
Tuesday, April 2, 2024 @ 9:30 A.M.

300 Reg. Holstein lots sell including 135 milking & dry cows,

150+ heifers from springers to baby calves along with 30 embryo packages.

BAA 110.6 (12/23 classification 43-EX, 59-VG, 17-GP) • RHA 29,634M 3.7% 1,106F 3.0% 900P SCC 99,000 February 21st test avg. 93 lbs. milk 3.8%F 3.1%P (35 cows over 100 lbs. up to 179 lbs.!)
 *Many show age heifers & calves will sell from multiple gen. EX dams including 23 head due for March show babies!
 *Note: Bred for profitability, longevity, production and eye appeal! Tremendous cows, great people and deep pedigrees all add up to make this sale one of the greatest herd dispersals in years and you will not want to miss it!

Cows and Cow Families selling include:



Kar-Je Mr A Lillie EX-94,3E EEEEE

LTD 306,087 3.7 11,206 2.9 8864
 The lovely Lillie is preg & due Oct. to Luster-P, peaked at 154 lbs and looks as great as ever! This must see cow sells w/ Perfect embryos along with several descendants sired by Delta-Lambda, Unix, King Doc, Sidekick, etc.



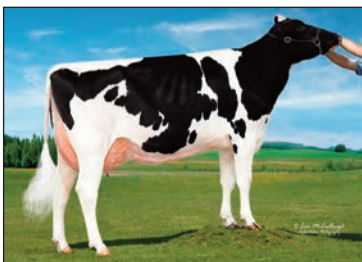
Golden-Rose Goldrush EX-94,3E EEEEE

6-09 305 39,900 4.8 1928 3.5 1392
 The spectacular Goldrush is an 18th gen. EX cow and sells ready to flush along w/ 20 descendants! Young VG milking dau's sell sired by Altitude, Awesome, King Doc, Denver, Artist, Moovin & more along with their calves. ALSO, several embryo lots sell from Goldrush herself!



Kar-Je Mogul Blizzard EX-94,3E EEEEE

LTD 263,222 3.6 11,533 3.1 8,382
 Blizzard sells w/ Addison & Lambda embryos and has records over 40,000M! Also selling is 2 beautiful fresh Delta-Lambda & fancy yrling Tatoo daughters along with more descendants. Deep pedigree w/ multiple EXs.



Kar-Je Shottle Orchid EX-94,4E EEEEE

LTD 335,055 3.6 12,290 3.1 10,307
 Orchid sells along with 25 descendants including EX Corvette w/ 128 lbs last test, EX Mogul w/ 98 lbs, VG-88 Lambda w/ 95 lbs, EX Shottle w/ 101 lbs and each one with daughters selling!

More Highlights Include:

- 20th gen. EX R&W Jordy sells along w/ embryos and 3 daus including GP-84 pt polled R&W 2yr-old & gr' daus that are pot. 22nd gen. EX!
- EX-94,2E McCutchen sells w/ over 110 lbs 1st 5 tests along w/ daughters by Eye Candy, Sidekick & Jordy!
- EX-92,3E Dorcy sells milking 134 lbs last test along w/ EX Mogul sister making over 45,000M due May to Sidekick, along w many more family members!
- EX-92 Explode milking over 100 lbs/day along w/ just fresh Howard 2yr-old dau.
- EX Aftershock sells X EX Mogul X EX-91 Gold Chip along with several family members
- EX-93,2E Phoenix sells X EX Zenith along with several family members including an EX-92,2E Gold Chip & EX Crush
- EX-93,3E Atitude sells and had 156 lbs 1st test, along with other family members
- VG-88 Silver w/ 51,160M last lactation, fresh again w/ 179 lbs last test X EX Atwood
- Many more great young cows and heifers sired by Delta-Lambda, Aristocrat, Eye Candy, Warrior, Dynasty, King Doc, etc.
- **Weaverline 537 electric feed cart SELLS. 5 years old, 1,137 hours, new batteries in great shape!**

Sale will be broadcast live on **COWBUYER**

Sale Manager/Catalogs:

Daniel Brandt PEDIGREES & MARKETING

167 Valley Lane, Annville, PA 17003
 Ph: 717-821-1238 Fax: 717-867-5493
 E-mail: brandtfive@comcast.net

Sale Host: Zuck/Kar-Je Reg. Holsteins
 c/o Travis Zuck 717-821-3432 135 Fox Rd, Lebanon, PA 17042

Sale Staff:

Daniel Brandt, Pedigrees 717-821-1238; Chris Hill, PA Auct. #AU-005197 202-255-7907; Bob Landis 717-413-1232; Don Welk 717-575-4700; Matt Zimmerman 717-222-0101; Dave Lentz 717-329-9202; Colin Lentz 717-304-9336.

Zimmermans
 Glasslined Storage
 Oakland Mills, PA
 36 Yrs. Experience • Silos & Tanks
717-463-9731
 www.silosandtanks.com

Pre-Owned Slurrystores® and Harvestores® in Inventory - Ready to be built **COMPARE OUR PRICES & QUALITY**

FUSION TANKS & SILOS
AISTOR Stainless Steel Engineered Roofs
Zabel Equipment Hydraulic Manure Pumps
DRYHILL Manure Pumps

aFs automatic Hammermills
E. RISSLER MFG. Spiro Mixers
Quality Parts, Inc. Harvestore® Aftermarket Parts
Challenger Slurrypump HOT-DIP GALVANIZED

Rebuilt Harvestore® Unloaders In Stock - installed with a 2 year warranty
WE SERVICE WHAT WE SELL

SERVICE DEPOT
 Alvin Eberly Harrisonburg, Va. 540-820-0818
 Norwain Acres Orrville, Ohio 330-621-1276
 Zimmermans Oakland Mills, Pa. 717-463-9731
 Zimmermans is not affiliated with CST Industries, Inc.

SILO DOORS, galvanized steps and latches, poly door panels cut to size for all types of silos. Quality products are always a good investment. Meadow Springs Farm, Gordonville, Pa. Sales brochures and quotes call J. Elmer 717-768-3337 ext. 1.

RE-BUILT SILOS, New or used, relines, parts and repairs. Call SR Silos 717-527-4103.

S & S SILO SERVICE - We erect silos, repair silos with shotcrete, repair concrete walls, stone walls, and foundations with shotcrete. Serving the shotcrete and silo industry for 25 years. 610-273-3993.

MANUFACTURERS of silo doors and hardware. Double thick tongue and groove cedar poly and plywood doors. Hardware is powder coated. Agri-Door. Call 717-949-2034.

19 Real Estate

FARM FOR SALE - 365 acres, 244 tillable. Parlor double 12 DeLaval expandable. 872 freestalls mature cows, youngstock housing. 3 houses for employees. Spruce Creek, Pa. 814-883-0176. (4/26)

FARM FOR SALE - 158 acres, 100 acres tillable. 37 tie stall barn, 2 sheds. 6 bedroom house. Somerset Co., Pa. 814-267-3875.

NORTHERN PA. year round home with spacial property. Gorgeous mountain views, near State Gamelands and developed bicycle trail. Sits high and dry. Phone 717-856-2024.

THE GET-R-DONE REALTOR. Rodney Rice, 717-729-9501. 50 years serving farmers selling, buying, auctioning. Landfarmrec-JAK Real Estate. 717-753-5510.

TO BUY/SELL REAL ESTATE in Pa. call Thomas Hershey at 610-209-7096. Hershey Farm Agency, Inc., HersheyAuctionLLC.com. 800-880-3831.

BEILER-CAMPBELL Realtors and Auction Services, Farm and Land Division. Are you looking to purchase or sell a property in Pa. or Md. Call Chris Taylor, office mgr., 888-786-8715 for an auctioneer or realtor.ctaylor farms.com.

20 Wanted

BYRNE
SINCE 1933

BYRNE DAIRY is looking to increase their raw organic milk supply. For more information, contact Bob Bowles at 315-436-0997 or Leslie Ball at 315-382-2782. (4/5)

CUSTOM GRAZING operation in Canandaigua, N.Y., looking to add clients for the summer grazing season. Looking to take on another 40 head of heifers, dry cows, or steers. Pay based on head/day. All new hi-tensile fencing. Daily moves. 315-573-6742. (6/28)

CERT. ORGANIC DAIRY heifers from 6 months to springers. 570-250-1725.

STATIONARY VERTICAL TMR mixer. Prefer 200 cu.ft. or smaller. 315-536-9825.

BUYING HARVESTORE silos & Slurrystores. Call 717-517-2080.

ISSUES OF HOLSTEIN World, Jersey, Brown Swiss, etc. (all other dairy cattle breeds) magazines, sale catalogs and sire directories. 716-255-5625.

I AM STILL LOOKING FOR used books and publications about dairy farming, printed early to late 20th century. Interested in all farming related topics. Paying cash. Phone Owen Backus, 608-479-0811.

I BUY TRUCKER HAT collections. 215-896-5609.

21 Opportunities Wanted

YOUNG FARMER looking for a dairy farm to rent. Ideally rent to own situation in Pa. or Md. 717-824-1320.

OLDER MAN SEEKS part time/full time work on farm with on-farm housing or nearby. Prefer Franklin Co. area or nearby. Consider other areas. 717-816-9693.

INDIVIDUAL SEEKING herdsman position or looking to rent approx. 50 cow dairy farm. 814-442-5782.

22 Help Wanted

HIRING LEAD HERDS-MAN. Lead Fox Meadows Farm dairy operation with focus on herd health, feeding, production, reproductive health and youngstock. Life-giving compensation, benefits and housing. Apply by emailing chad@foxmeadowscreamery.com or in person at 105 North Clay Rd., Lititz, Pa. 17543. (4/5)

23 Pets

OUT OF RESPECT FOR animal welfare, "Pets or Dogs Wanted" will not be accepted as classified ads. We will continue to accept household pet "For Sale" ads. Please take care when purchasing, selling or giving away a pet, keeping the animal's well-being in mind.

24 Seeds

ALFALFA, GRASS MIXES, oats and sorghum. Hefty brand and Augusta seed corn. Jacobsen GT soybeans. Leabrook Ag, call us at 717-898-9576.

NEED SEED OATS? We can obtain almost any variety. Also publish quarterly oat marketing newsletter. \$12/year. J.C. Goss, Box 312, Hurley, MO 65675, 417-708-7860.

KING'S AGRISEEDS, feeding your farm's future through high energy forages, and soil building cover crops. Lancaster, Pa. 717-687-6224, info@kingsagri seeds.com, www.KingsAgri Seeds.com.

CORN SEED. PRICING starting at \$129/bag (before discounts). De Dell Seeds, the leaders in Non-GMO corn. 519-264-CORN.

ALFALFA, CORN, SOY-BEANS and more! Call us

for all of your crop needs. Growmark FS-Eighty Four. 724-222-4303, www.growmarkfs.com.

TRY THE NEW WINNER 2015 World Forage Analysis Superbowl - Alforex Hi-Gest 360 Alfalfa, cutting edge digestibility. Hess Farm Supply 717-354-9492.

SEED CORN - Partners brand, Mid-Atlantic, Prairie Hybrids. Lots of customer satisfaction. Dairyland hybrid alfalfa's quality yield digestibility. Oregon AG, 717-656-0067.

HUBNER SEEDS - Alfalfa, Corn, Soybeans, call Merle Stoltzfus. 717-224-0700.

APPLY AGROWSIL TODAY Quick and long lasting PH increase, increased yields, soil nutrient release, disease and stress tolerance, and drought tolerance. 1-800-850-0527.

25 Miscellaneous

STOP FLIES. GREAT products. Fly parasite plans. Cedar solar traps (the best). Zapper that just keeps zapping. www.dairyflyparasites.com. 888-771-3276. Useful Farm Products.

LOOKING TO GET RID of insects? Buy bluebird or tree swallow houses. Plus more. 717-529-2326, ext. 1.

CLEANING OUT YOUR attic? We'll take any maga-

zines, newspaper, books, etc. for old man to shred for horse bedding. Call now. 717-529-2326, ext. 1.

SEE FARMING IN N.Y. through the eyes of an 11 year old. Visit Youtube and search "4th Gen Dairy Farmer" for videos. Call 716-474-1705 for more information.

HORSE, DONKEY AND calf blankets. Reasonably priced. Dealers welcome. Call 717-361-4474.

LIGHT UP YOUR BARN with custom made clear poly carbon doors. Also custom manufacturing and repair. Jonas King, 3451 Sunnyside Rd., Manheim, Pa. 17545. 717-361-8853, ext. 4.

POLY SILO DOORS - Steel horse hitches; pine shavings; pine bedding pellets; Meadow Springs Farm, Gordonville, Pa. 717-768-3337, ext. 1.

PAINTED MILK CANS - farm scenes \$200 or have

one custom painted with cows, horses or any family pet. Carroll County, Md. 410-259-1276.

OLD AERIAL PHOTOS of your farm or home dating back to 1963. Nathan Lewis 888-402-6901 or vintageaerial.com.

27 Livestock

ANGUS BEEF, READY FOR slaughter. 570-488-6596.

Special Dairy Sale

SALE HELD AT FISHER'S QUALITY DAIRY SALES
3304 OLD PHILADELPHIA PIKE, RONKS, PA.

THURSDAY, APRIL 4 • 7 P.M.

Group 1 - Herd consists of 40 cows and several bred heifers. Herd is milked in tie stall barn. Herd currently averaging 70 lbs. 3.8 2.8 SCC 200,000 in tank. Will have individual components on sale day. 10 cows milking 100-120 lbs., 6 milking 90-100 lbs. 19 fresh since January, 5 due June-August, 6 dry, due next 60 days. This is a good, young herd. No TMR.

Group 2 - Consists of many good, young, fresh cows and heifers from overstocked herds and heifer raisers.

*Watch for more details next week.
Free chocolate milk • Not responsible for accidents*

Sale managed by: **FISHER'S QUALITY DAIRY SALES**
Jonas Fisher • 717-768-3297
Auctioneer - Dave Stoltzfus - AU005655 • Pedigrees - Dan Albright

Ovaltop HERD REDUCTION SALE

SATURDAY, APRIL 6, 2024 - 11 A.M.

Sale held at the farm - 436 Chyle Road, Richfield Springs, N.Y. 13439

*Registered Holsteins since 1926 * BAA 110.5 DHI RHA 23,323 4.4 958 3.4 738 Average 73#/day.
We will be selling over 100 lots - with over 55 R&W'S! There will be something here for everyone.
This is a tiestall herd that goes out daily and fed TMR & Hay. Heifers are raised in a freestall.

 Ovaltop Bwire Ruby-Red-ET EX-92 EEEEE 5Y 4-04 278 22,120 3.9 856 3.3 720 Selling her potential 11th gen. EX! Dtr. VG-87 @ 3Y x Rip-it-Red due in Sept. to Diamondback. Also a Summer Yrlg. x Altitude. A great 2024 show prospect.	 Ovaltop Archrival Tess 2E-93 EEEEE 6Y 6-02 365 29,450 3.7 1080 3.0 895 Going back to the EX-96 Tobi Family. Selling Tess's 2 dtrs. - one VG-86 x King Doc will sure turn your head! And another Tattoo dtr. 5 family members sell with another VG-88 2Y x Sidekick fresh in Nov. and looks great.	 Ovaltop Crush Jenny EX-91 EEEEE 4Y 3-09 365 30,640 4.1 1242 3.3 999 Selling her fancy dtr. - VG-87 @ 2Y x King Doc (potential 5th gen. EX) could be the Sr. 2Y for 2024 shows! Check last week's ad if you missed it on the other great highlights!	 Ovaltop Solomon Rollie EX-90 EEEEE 4Y 3-04 365 31,020 4.1 1274 2.9 908 Selling her fancy dtr. "Razzle" VG-85 @ 2Y x King Doc. Fresh in Nov., 2D: VG-88, 3D: Goldwyn Rapt VG-88, 4D: Indianhead Rapture VG-86, 5D: Blackrose 2E-93. Also a fancy R&W winter calf x. Awesome from same family sells.
 Ovaltop BW Bella-Red VG-88 EEEVV 5Y 4-05 365 29,130 4.4 1290 3.6 1045 Selling Unstopabull embryos. Bella's dtr. x Diamondback also sells just fresh and looks amazing. 2D: CS-Redvue Secure Bee-Red 2E-91, 3D: Greenlea-TM Shot Bee-ET VG-86, 4D: Beulah-Red EX-92, 5D: Britney EX-90, 6D: Pinehurst Burgandy-Red EX-90, 7D: Pinehurst Beaujolais-Red 3E-94, next 4 dams EX.	 Oakfield Lo Scarlett-Red-ET 2E-94 EEEEE 8Y 7-06 278 33,826 4.0 1358 3.2 1099 LT 1463 140,430 4.5 6182 3.5 4806 All-NY Aged Cow, 2nd Aged Cow NY Holstein R&W Show 2023 Selling her fancy R&W 2Y (potential 3rd gen. EX) GP-83 @ 1-10 x Unstopabull. 2D: Stony-Pillar Sharmaine-Red 2E-94. An exciting opportunity!	 Oakfield Extreme-Red-ET 2E-91 EEEEE 6Y 6-01 365 31,160 3.0 941 2.6 804 Selling her two milking dtrs. x Unstopabull - Emma - EX-90 @ 3Y (is 10th gen. EX!). Erin VG-85 @ 3Y (potential 10th gen. EX).	 Ovaltop Piclo Sherry-Red-ET 2E-92 6Y 5-04 365 31,640 3.2 1018 3.0 953 Selling her 3 flashy R&W dtrs. all VG x Unstopabull. All go back to the 3E-94 Sallie Family.

View and bid online in real-time at www.cowbuyer.com. Must be pre-approved. 

SALE MANAGED BY:  **Hosking Sales**
COMPLETE AUCTION SERVICE

Tom & Brenda Hosking and Family
6071 State Hwy. 8, New Berlin, NY 13411
Phone: Tom 607-972-1770 | Brenda 607-972-1771 | Dan 607-972-8773
www.hoskingsales.com • Like us on facebook

Sale Staff:
Tom Hosking Auctioneer 607-972-1771
Dan Hosking Auctioneer 607-972-8773
John Burkett Pedigrees
Daniel Z Stoltzfus 717-283-7282
Adam Little 518-361-9946
Jason Pullis 315-794-6737
Luke Pullis 315-263-7422
Brad Ainslie 315-251-0284
Cyrus Conard 518-369-3389
David Reynolds 717-321-4011
Jason Lloyd 518-231-1731

Catalog request: Call Hosking Sales 607-847-8800 or Brenda 607-972-1771 or email sales@hoskingsales.com. Watch our facebook page for updates.



**SCAN TO
LEARN
MORE**



DAIRY NUTRITION BUILT FOR YOUR NEEDS

- Customized Nutrition Consulting
- Emphasis on Forage Value
- Innovative Nutrition Products
- In-House Lab and Tech Services

Southeast PA

Regional Manager:
Larry Wenger
Leola, PA
(717) 371-6226

Kirkwood, PA
Les Hershey
(717) 989-1808

Manheim, PA
Steve Kauffman
(717) 940-4474

Manheim, PA
Brent Neely
(717) 371-7391

Lancaster Area PA

Regional Manager:
Chad Martin
Brownstown, PA
(717) 314-2460

Felton, PA
Mike Kosmicki
(717) 495-6289

Lebanon, PA
Noah Gesford
(717) 805-4075

Lititz, PA
Scott Forbes
(717) 572-6182

Newville, PA
Kyle Kotzmoyer
(717) 422-1356

Central/Western PA

Regional Manager:
Dan Ingle
Tyrone, PA
(814) 935-8610

Centre Hall, PA
Keith Hershey
(814) 571-8795

Kittanning, PA
Matt Smith
(724) 525-0334

Millmont, PA
Ken Heimbach
(570) 847-9150

Watsontown, PA
Jim Ulmer
(570) 490-4166

Winfield, PA
Keith McCool
(570) 847-8645

South Central PA
Hollsopple, PA
Nathan Spory
(814) 341-9134

Chambersburg, PA
Brian Horst
(717) 360-0483

Shippensburg, PA
Ed Okuley
(717) 816-6082

Area-wide
Tyrone, PA
Dave Russell
(814) 935-2640

Watsontown, PA
Don Sanders
(570) 713-4393

PA Warehouse
Lititz, PA
(717) 581-1558



"CAPTURING THE NUTRITIONAL VALUE IN FEEDS IS THE KEY TO PROFIT."