

# ARE YOU IN?

In FARMSHINE, that is



Now with affordable color on every page and with the targeted audience you want.

To be in, please call one of our sales representatives today.

**Advertising Dep't**  
717-656-8050  
ads@farmshine.net

**Missy Johnson**  
484-336-0588  
farmshine@verizon.net

**Ashley Denlinger**  
717-940-7750  
ashley@farmshine.net

# FARM SHINE

We rise every week to cover farmers and agribusinesses

WOW!  
97 MILK!  
Page 3

Farmshine • Volume 45, Number 13 • \$20 one year

Mailed the day before →

November 24, 2023



## Horace Backus' collection of Holstein memorabilia is for sale

DELHI, N.Y. — A truly one-of-a-kind collection of Holstein sale catalogs and historical memorabilia from the personal collection of Holstein legend Horace Backus will be offered in an online auction on November 28 – 29 and 30 via cowbuyer.com.

During his career of more than 65 years as a leading sale manager and unrivaled pedigree expert, Horace Backus may have done more than any other single individual to add value to Registered Holsteins, to instill confidence in the auction sale market and to inspire Holstein breeders everywhere.

The Horace Backus Online Memorabilia Auction is being organized by David Rama of The Cattle Exchange, Delhi, N.Y. Rama worked side-by-side with Horace at sales for over 20 years. He has selected extremely rare



items including Holstein sale catalogs dating back to the Erickson Dispersal in Wisconsin in 1924. Many of the catalogs are the ones used by Horace himself in the auction box and include his many handwritten notes and comments.

Catalogs will be offered from famous sales such as Dunloggin, Osborndale and Carnation and more recently Tara Hills and Roman-dale. Herdbooks including not only Holstein-Friesian Association volumes dating from the very first in 1885 but also from the Dutch-Frie-

**Horace Backus may have done more than any other single individual to add value to Registered Holsteins, to instill confidence in the auction sale market and to inspire Holstein breeders everywhere.**

*Photo by Dieter Krieg*

sian group that preceded and then merged with it. Early books of Holstein history will be offered along with limited quantities of the books that Horace himself wrote and published.

Rama thanks Holstein veterans Wayne Conard, Patsy Gifford and Dick Witter for helping to catalog and organize the materials for this sale. The collection is vast, and more items will be offered in additional sales in the future, he says. Whether for a personal collection or a holiday gift, these priceless items must be considered by any Holstein enthusiast, Rama says.

In announcing the sale, Rama explained that proceeds will be used to support Horace who is recovering from a stroke suffered earlier this summer. He is in an extended care facility close to his son near Rochester, N.Y.



ASTRONAUT AND FRIENDS



"Chief Adeen" and "Alicia" are pictured here with caretaker Emily Heffner. The sisters had a very special home with Ron and Emily, receiving the "royal" treatment they so richly deserved.



Round Oak Ivanhoe Eve (\$11,000)

Left to right: Calvin Will and his son, Dan of PA, buyers; John Archbold and Ted Eldredge of VA, contenders; Ronald Hope, seller; Emmett McClure at the halter. Fassett Brothers of Clinton Camp Farm (NY), not pictured, were also contenders.



Tim and Teresa Kissling

"Farmshine" visited Hidden-View shortly before the dispersal sale in 2004



BEACHLAWN DUTCHOE BELL

Tom and Betty Beach with Beachlawn Bellwood Tammy.

Without doubt, the most comprehensive history of the Holstein breed can be found in the books that Horace Backus wrote. How did he find the time to do it all? Passion for the breed.



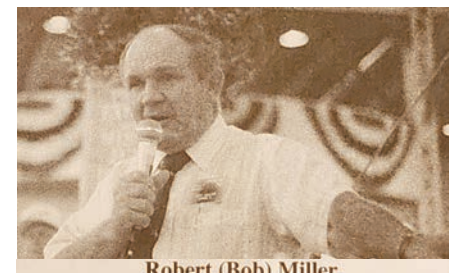
L to R: Joan Biehl Schlegel, Clara Plushanski and Charles Plushanski. Ms. Schlegel, a neighbor who grew up next door, did the portrait of Plushanski Chief Faith.



Reagan visited New Holland Sale Stables on one of his campaign trails. Abe Ditt...



Jonathan and Alicia Lamb of "Oakfield Corners" in New York are the breeders of the first two 16th generation Excellents, both of which trace directly back to Audrey Posch.



Robert (Bob) Miller

Breeder of "Roxette". One of Holsteindom's most respected statesman.



ALLEDAIRY GLAMOUROUS IVY (2E-96-GMD) \$1,025,000

PERIODICAL • DO NOT DELAY

A Thanksgiving feature	..... 5	Market Moos	..... 16
Classified advertising	..... 20	New York team wins	..... 15
Editorial	..... 4	Nominations, please	..... 23
Farm safety videos	..... 9	PHA District meeting	..... 2
Good advice taken	..... 12-13	Wow! 97 MILK!	..... 3

THE WEEKLY DAIRY FARM FAMILY MAGAZINE

*“Keep up the good work. I love the editorials that tell it like it is.”*  
 — S.Y., Wisconsin



We welcome you to send in your subscription request now. We are THE weekly dairy farm family magazine, since 1979.

Two Years \$38 • One Year \$20

Name: \_\_\_\_\_  
 Address: \_\_\_\_\_  
 Town: \_\_\_\_\_ State: \_\_\_\_\_ Zip: \_\_\_\_\_  
 Phone or e-mail: \_\_\_\_\_ New / Renewal (Circle one)

Mail with payment to FARM SHINE, 342 E. Main St., Ste. 201, Leola, PA 17540

## PHA District meeting set for Dec. 30, 11 a.m.

STATE COLLEGE, Pa. — The South-Central District of the Pennsylvania Holstein Association will hold a meeting on Saturday, December 30, to seek nominations to serve on the Executive Committee and begin the planning for the 2025 state convention. The meeting will start at 11 a.m. at Hoss’s Steak & Sea House, Mechanicsburg, (at the intersection of the Pennsylvania Turnpike Exit 236 and Route 15).

Glenn Brake will complete his 3-year term on the Executive Committee. Any Pennsylvania Holstein Association member from Adams, Cumberland, Dauphin, Franklin, Lancaster, Lebanon, Perry and York counties can make nominations. Up to three nominees can be submitted from this meeting to the State Directors for election to the Executive Committee at the 2024 Pennsylvania Holstein Convention set for February 9-11, 2024 at the Hilton Scranton in Scranton.

The group will also discuss the 2024 South-Central Championship Show and any other issues members may wish to address.

All Pennsylvania Holstein members from South-Central Pennsylvania are invited to attend this important meeting set for Saturday, December 30th.

## Want a dairy job? Here’s your contact

HARRISBURG, Pa. — The Center for Dairy Excellence has a “Dairy Job Opportunities” tool available for producers who have employment opportunities they are looking to fill on their operations. The online resource allows dairy producers to submit their job openings to be shared with the CDE’s networks and digital channels.

When submitting a job opening, dairy producers must include the title of the position and employment category, including full-time, part-time, hourly or internship opportunity. They must also include the farm name, job description and responsibilities, employer’s contact information, and a job application if available.

To submit an employment opportunity available on your dairy operation, visit [www.centerfordairyexcellence.org/dairy-job-opportunities](http://www.centerfordairyexcellence.org/dairy-job-opportunities). Questions? Call 717-346-0849.

Thank You for reading



USPS 509450 ISSN 0745-7553

Published by Farmshine LLC in Lancaster County, Pennsylvania.

1-YR. SUBSCRIPTION - \$20.00  
 INTERNATIONAL SUBSCRIPTION - \$40.00  
 Published every Friday except the week of Christmas

Dieter Krieg, Editor & Publisher  
 Melissa Johnson, Advertising Representative  
 Ashley Denlinger, Advertising Representative  
 Sue McCloskey, Secretary  
 Douglas Denlinger, Production Manager

Send subscriptions, news & advertising to:  
 FARM SHINE  
 342 E. Main St., Suite 201, Leola, Pa. 17540  
 Phone 717-656-8050 | Fax 717-656-8188  
[news@farmshine.net](mailto:news@farmshine.net) | [ads@farmshine.net](mailto:ads@farmshine.net)

Periodicals postage paid at Lancaster, PA and at additional mailing offices.

POSTMASTER: Send Address Corrections To:  
 FARM SHINE  
 342 E. Main St., Suite 201  
 Leola, Pa. 17540

Copyright © 2023. Printed in USA. All rights reserved. No part of this publication may be reproduced in any form without prior written permission by the publisher. Information gathered herein is from resources considered reliable. Accuracy, however, cannot be guaranteed. All printed material is intended for your information and reading enjoyment and is not meant to disrespect or harm any group or individuals. Ads appearing in this paper are not to be considered as an endorsement by Farmshine for products or services offered.

Farmshine’s staff reserves the right to refuse any and all material, including articles and advertisements that they determine do not fit the objectives of Farmshine.

**“They insisted, and they were right! SCC fell... Fresh cows feel better... They make more milk and higher quality milk.”**

— Scott Stempfle



WATCH



**STEMPFLE HOLSTEINS, Maynard, Iowa**  
 Paul and Jody, Scott and Alannah Stempfle  
 750 Holsteins, 95 lbs/cow/day 4.2F 3.2P, SCC 137,000

“If you don’t have cow comfort, nothing else seems to matter. We minimize the stresses at calving on her feet and legs, making sure she has feed and water, a good place to rest, she’s clean and she’s dry. That leaves the udder, and with Udder Comfort™ they transition a lot more smoothly,” says Scott Stempfle, herd health manager at Stempfle Holsteins, Maynard, Iowa, milking 750 Holsteins, averaging 95 pounds of 4.2 fat milk.

“For 10 years we used Udder Comfort periodically. At the 2022 World Dairy Expo, they talked me into the Udder Comfort Battery-Operated Backpack Sprayer. I didn’t think it would fit our operation, but they insisted, and they were right! In 3 months of being consistent, our SCC fell from 165 to 137,000. Any clinicals clear faster and don’t become repeats.

“Now, we continue to use it 3x/day on all of our fresh cows for a week after calving. If we have a mastitis cow or high SCC, anything not perfectly normal, we spray it on a couple times. It seems to fix about anything,” Scott explains.

“With fresh cows, we see a lot more udder texture at 2 weeks in milk as edema is pulled out. You can see fresh cows feel better. They’re up moving around more. They eat. They drink. They make more milk and higher quality milk,” he reports.

“This made us more compliant on fresh cow applications for better udder health. It’s more user-friendly than I thought it would be, no bottles to refill, charges fast, holds the charge, always ready for use in parlor, headlocks or freestalls.”

## UDDER COMFORT™

Quality Udders Make Quality Milk

**Her Comfort is Our Passion!**

Softer udders ⇨ Faster milking  
 Better quality ⇨ MORE MILK

1.888.773.7153  
[uddercomfort.com](http://uddercomfort.com)  
[uddercomfort.blog](http://uddercomfort.blog)

Helping reach their potential since 1998!



For external application to the udder only, after milking, as an essential component of udder management. Wash and dry teats thoroughly before milking.

*The call for volunteers was a theme throughout the meeting*

# The work of 97 Milk is on target; making a difference

By **RENEE TROUTMAN**  
Special for Farmshine

EPHRATA, Pa. — Nearly in its fifth year of existence, 97 Milk continues to forge ahead with a movement started with a simple plastic-wrapped round bale with the words "Drink Whole Milk 97% Fat Free" painted by Nelson Troutman. Now, 97 Milk is a genuine grassroots effort and a driving force to educate consumers of the importance of whole milk's nutrition so they can make informed choices.

On the morning of Friday, November 17, several dozen dairy farmers and industry representatives gathered at the Durlach Mt. Airy Fire Hall to receive updates of the group's activities and future plans. Ideas and discussion flowed.

97 Milk Chairman Glen Hursh began the meeting by overviewing the purpose of the organization, which is now a 501c3 non-profit. They supply materials that promote whole milk and they reach consumers extensively through in-person events and social media. 97 Milk is run completely by volunteers but as their resources and funding has grown through voluntary donations, promotional materials are able to be supplied. Stickers, car magnets, yard signs, banners, and informational brochures are all available now at no charge for those willing to put those items to work.

In order to keep this momentum going, Hursh asked farmers to consider committing to the 97 Milk voluntary milk check contribution. A small per hundredweight deduction would be taken from the monthly milk check and diverted to the purposes of 97 Milk. Agribusinesses that depend on dairy farms are also asked to include a link directing their page visitors to the 97 Milk website. This would cost nothing to the participating business but it would be a tremendous way to increase traffic to the 97 Milk website.

Even more importantly than donations and support is the need for volunteers and other people to come alongside with their boots on the ground for in-person events to meet with consumers one on one. This doesn't need to be limited to dairy farmers, but anyone whose job or business has a stake in the industry or even people just concerned about proper nutrition. The call for volunteers was a theme throughout the meeting.

While lobbying for or against legislative issues is not a



Jay Hoyt: "If you don't have kids drinking milk you won't have anything!" Photo by Renee Troutman

focus of 97 Milk, it is a factor in the group's efforts. To give a federal update on the work of Congressman G.T. Thompson and the House and Senate bills currently in place to make whole milk available as a choice in public schools across the nation was Sherry Bunting. Introduced by Thompson, HR1147, the Whole Milk for Healthy Kids Act of 2023, was passed by the House Education & Workforce committee in June. Political conditions are mostly favorable for the bill to see a vote on the House floor in the near future but if it does fail to happen it's fortunately still early in this legislative session that the bill can roll over into the new year so time won't be lost restarting the process. The bill has been introduced in four legislative sessions and it's taken a long time to reach the likely potential for a vote on the floor.

One problem for the delay or lack of support is that many people have not realized that whole milk has been banned inside the walls of public schools. "The problem we have,

and this is where 97 Milk has been a tremendous force, is that people don't understand the issue and they don't believe it's true.

**"Most parents can't conceive that their children can't get whole milk in school or they don't know the importance of the difference," Bunting said.**

"We're fighting apathy and those so many other big issues in the world, it's hard to get something that seems so insignificant to rise to the top. But we've got a champion in G.T. Thompson and now it's time for everyone else to pick up the ball and get after the Senate."

Bunting stated that the most imperative thing at this time is to get more co-sponsors for S1957 which is the Senate version of the bill. This is where citizens from all states need to be involved. Maine and Idaho are the only two states that have both their Senators as a co-sponsor. Most of the large dairy states have no support from their Senators. There are currently only 11 Senators signed on.

Bunting shared ideas for 97 Milk to come alongside larger organizations that are like-minded in nutrition and liberty to create awareness and bring the issue mainstream.

**"We have to keep moving forward to not only educate but also inspire. Anything worth doing is 10% inspiration and 90% perspiration," Bunting said. "If everyone just did a little, everything counts. Especially talking to people."**

Pennsylvania Representative David Zimmerman from the 99th district also attended the meeting, speaking from the floor and fielding questions from the group. He commended the work of the group and the extraordinary way the movement of 97 Milk has turned the tide on whole milk awareness. Zimmerman conceded that the federal government has control of the issue of school nutrition and that it can't be a state issue. He acknowledged that there is an uphill struggle legislatively for the efforts of 97 Milk against anti-animal agriculture groups and those with different dietary agendas. "However, the work you've done has put the message out

turn to page 9

## Durable Ag Curtains

**Prepare Now for Winter!**

**SEVEN YEAR WARRANTY**

**Complete Curtain Systems**  
with all the components you'll need

- High Quality 16 oz. Vinyl Curtain Material
- Galvanized Bird Wire
- Keder Tubing & Drive Motors

**Available with:** Manual Gear Drives or Fully Automated to Control Your Curtains 24/7

**Ask About Automation!**

**CALL NOW**  
to Get In Our Schedule

**SHADY LANE**  
Curtains LLC  
Bird-in-Hand, PA  
(717) 690-2003

**"The Nation's Industry Leader in Ag Curtains"**

# Farmshine Editorials

By Dieter Krieg  
Farmshine Editor



“Gratitude is the fairest blossom which springs from the soul.”

— Henry Ward Beecher

## Morrissey Insurance

### Congratulates The Following For Their Success At The Lancaster County Holstein Show!

Misty Z Holsteins  
Star Rock Farms  
Jordan Zimmerman  
Dale, Barbara and Jeremy Zimmerman  
Loren & Helen Zimmerman

*Congratulations to all exhibitors & winners of the Lancaster County Holstein Show!*



890 N. Reading Rd.  
Ephrata, PA 17522  
www.insuringyourfuture.com  
**800-422-8335**

## I'm thankful for a dear and highly regarded friend

**B**lessed. That's what I am. That's how I feel.

Reasons to be thankful increase with age and are verging on endless. But today, I wish to focus on just one reason: The privilege to know and be a friend of Horace Backus.

He comes to mind because of what you see on page 1, which is but the tiniest of tiny glimpses towards the man and his vast collection of Holstein memorabilia. Much more than that comes to mind.

Horace Backus, who turns 96 the day after Christmas, is a truly wonderful and fascinating person. Anyone who knows him has at one time or another expressed how privileged they feel to be alive during the same era as the 'Dean of Holstein Pedigrees.' Many, including this writer, have said it on numerous occasions.

Having known Horace for half of his life is indeed a blessing. As for *knowing of him*, that would take me all the way back to my teen years, which ended in 1964. He may not have been a legend back then, but he surely has become that over the years. A legend in his own time.

I'm thankful to have him among my "role model" friends. A mentor. One who has cheered me on, encouraged me and promoted my efforts for 45 years.

In a much broader view, I am intensely grateful for the Holstein history that he recorded during his career as an auctioneer, sale manager, pedigree reader, and collector of all things Holstein. It is a remarkable legacy that he gifted us with and it should have not just Holstein breeders in awe, but anyone who enjoys working with cows.

The Holstein history Horace wrote about in his 'Seedstock' books, along with a couple of others, showcases the top cows of the 20th Century as well as the first decade or so of the 21st Century. And, of course, the people are mentioned, who are even more interesting to read about.

Reading Horace's books takes one back into a different time when people attended sales in suits, ties and polished shoes. Many of the owners and breeders of the world-class cows making news during the first five decades of the 20th Century were fabulously wealthy. They had estates and barns that set the highest of high standards, and hired herdsmen to match. A few of the men have prestigious trophies named after them.

For all that and much, much more, I'm personally thankful for Horace Backus today and every day. God has indeed blessed us through him. And may God bless Horace.

# Lowering SCC Benefits All

Low SCC under 50K improves milk quality, milk production, profits and longevity.  
Decreased production from over 50K SCC reduces milk income

Linear Score	SCC	Ibs. Milk loss (per 2 yr. old lactation)	Ibs. Milk loss (per mature cow lactation)
2	50k	0	0
3	100k	200	400
4	200k	400	1000
5	400k	600	2000
6	800k	800	2500
7	1.6M	1000	3000

A 200-cow herd with 200 SCC loses about 200,000 lbs. of milk per year.

Start today - 920.650.1631



CALL 202-224-3121 and tell your Congressmen and Senators to co-sponsor. Vote yes to HR1147 & S1957 "WHOLE MILK FOR HEALTHY KIDS ACT"

SUPPORT 97milk.com. They support you!



Focusing on - High Energy Forage for Healthier Cows & More Profit!



**King's AgriSeeds Inc.**

FEEDING YOUR FARM'S FUTURE.  
1828 Freedom Road, Suite 101, Lancaster, PA 17601  
Call for a dealer near you!

**717-687-6224**  
www.kingsagri seeds.com

## Discount & Surplus Building Supply

Reduced prices with little or no sacrifice of quality.  
Roofing & siding cut to length.

- Galvanize/Galvalume, 36" coverage
- Painted, 36" coverage, 29 to 20 ga.
- Aluminum, 36" coverage, .015 to .040
- Stainless Steel

Door track | Lumber | Reject Plywood & OSB  
GlasBoard | Scratch & Dent Appliances  
Insulation | Rubber Roofing | Shingles  
Seconds Ag Tuff PVC Liner Panel  
Composite Decking



150 Slate Rd., Ephrata, PA 17522  
717-445-5222 | Fax 717-445-4841

Surplus & Discounted Building Products

## THE BRETHERN DISASTER RELIEF AUCTION

# Generous caring and sharing blesses the unfortunate

By **RENEE TROUTMAN**  
Special for Farmshine

LEBANON, Pa. — When overwhelming natural disasters happen, help is usually needed to overcome the damage and return to normal life. That's where Brethren Disaster Ministries comes in.

A program of the Church of the Brethren, volunteers seek to be the hands and feet that bring the help. There is joy in serving, not only by going to do the work, but also by funding those who go.

That's why a phenomenon occurs on the fourth weekend of every September at the Lebanon Expo Center. More than 10,000 people from all walks of life come together for a common cause: To provide the funds that will be used in big ways to bring real help to areas affected by natural disasters. This annual event is the Brethren Disaster Relief Auction. The buildings at the Expo Center are filled with almost anything you can think of that can be donated. Even dairy heifers.

As the history goes, back in the early 1980's, while the annual benefit auction was still fairly new, there were a few men who watched their wives cook, quilt, and craft items to be sold at the auction. They considered what they had of value to contribute and it was then that the Brethren Disaster Relief Heifer Auction was born. Now the heifer auction is the Friday morning kick-off event for a weekend filled with activity, camaraderie and generosity, all for the cause of helping others.

More than just an auction, it's meant to be a fun family event, with numerous activities for children such as barrel train rides, crafts, face painting, pony rides, and the popular Children's Auction where only children get to bid.



Many local dairy farmers donate a heifer, and sometimes dry cows, to the benefit auction. Some make a donation an annual tradition while others give on occasion. Consignors can pledge anywhere from 20%-100% of the proceeds to be donated. Photo by Renee Troutman

There are unique food vendors, shopping opportunities, a produce market, and of course people come from near and far for the auctions of quilts, coins, crafts, antiques, themed gift baskets and so much more.

Mike Kunkle of Lebanon County has served as the heifer sale co-chair for about a dozen years. "God works in our hearts to reach out and find heifers. Every year it comes together to have the people and supplies that we need. But we're always looking for more people," he said.

The heifer sale committee is formed by a good group of volunteers from Lebanon and Berks counties, but representation on the committee is sought from Lancaster County and also counties prominent with dairy

farms to the north. Committee members meet a couple of times a year to organize and they work to find consignments from their area for the sale. Those who do serve in this capacity find it to be a fulfilling venture. "You can make a difference when you're part of a group and you all have the same focus," Mike reminded.

Mike hopes to see the sale continue to grow in every way. Consignment numbers were less this year, but what they had sold so well it more than made up for it. The heifer auction brought in \$81,000, up about 16% from last year. Sale attendance with lots of prospective bidders is also important for a successful sale, and that could be improved. The downside is that the auction is always

held when crop harvesting is in full swing.

This year there were over 50 live lots of mostly dairy animals but a few beef animals mixed in, as well as donated lots of various things like straws of semen and embryos. Some farmers donated beef meat bundles. Mike would like to expand on this type of donation. "Not everybody needs to buy a heifer, but everybody eats," he said. Even the fall decorations of planters and pumpkins that beautified the sale ring were donated and auctioned.

Beyond donating a heifer there are many ways to participate. Businesses and individuals advertise in the sale catalog which covers the printing of the catalog and a few other expenditures. This year K&K Feeds, LLC donated the feed and Brent and Lawanda Hostetter gave the hay for the animals while they were kept on location ahead of the sale day. Many people jump in to wash, clip, and care for the animals as they come on Wednesday. Even the ladies that make the lunch for the workers can't be overlooked for their contribution.

Many local dairy farmers donate a heifer, and sometimes dry cows, to the benefit auction. Some make a donation an annual tradition while others give on occasion. Consignors can pledge anywhere from 20%-100% of the proceeds to be donated.

Lebanon County dairy farmer Travis Zuck placed several heifers in the auction. He said, "We've always been blessed with an abundance of replacement heifers and I feel that this is a great way to give back and help spread the love of Christ."

Gary Lentz echoes those sentiments. "I've always been blessed in my farming career. I feel called to give back, and this is how I can."

From Berks County, dairy farmer Connie

turn to page 7



JBZDAIRY.COM

WISHING YOU A VERY

**MERRY  
CHRISTMAS**

WITH OUR ANNUAL  
YEAR-END SALE!

**10% OFF** DeLaval & E-Zee Parts,  
Tubing, Liners, and more!  
**PLUS 5% OFF** Afi Tags & Straps,  
Teat Dips, and more!

Call Us Today!

**717-354-8030**

**DeLaval** INDEPENDENT AUTHORIZED DEALERSHIP

**MUST ORDER BETWEEN  
10/16/23 - 12/15/23**

## Dairyman's Datebook

**NOVEMBER 28**, 10 a.m. Professional Dairy Producers® (PDPW) Dairy Insights Summit, Sheraton Hotel, 706 John Nolan Drive, Madison, Wis.

**DECEMBER 4-6**, New York Farm Bureau's State Convention at the Sleepy Hollow Hotel and Convention Center, Tarrytown.

**DECEMBER 5**, 9 a.m. Homestead Nutrition dairy seminar, Yoder's Banquet Facility, Route 23, New Holland, Pa.

**DECEMBER 12-13**, Dairy Managers Institute presented by Professional Dairy Producers of

Wisconsin (PDPW); beginning at 8:30 a.m. on the 12th; 8 a.m. on the 13th at PDPW headquarters, 820 North Main Street, Juneau, Wis.

**DECEMBER 30**, 11 a.m. Pennsylvania Holstein Association South-Central District meeting, Hoss's Steak & Sea House, Mechanicsburg, (at the intersection of the Pennsylvania Turnpike Exit 236 and Route 15).

**JANUARY 15-17**, Georgia Dairy Conference, Marriott Savannah Riverfront Hotel & Conference Center, Savannah.

### Important notice to all readers and advertisers:

There will be no **FARM SHINE** published on December 29 to allow our staff to enjoy their families at Christmas. We'll resume our weekly schedule beginning January 5.

## Auction Guide

**NOV. 24 - NOV. 27**, Hard Core Online Milking Shorthorn Sale, cowbuyer.com. Sale managed by Keith Fisher.

**NOV. 29**, 10:30 a.m. Dairy Cow & Heifer Sale, New Holland Sales Stables, New Holland, Pa. Sale managed by New Holland Sales Stables.

**NOV. 29**, 12 p.m. Clover Patch Cornucopia Online Jersey Auction, Millersburg, Ohio. Sale managed by Kreeger and Associates.

**DEC. 2**, 12 p.m. Holiday Beef Round-Up Sale, Hosking Sales, New Berlin, N.Y. Sale managed by Hosking Sales.

**DEC. 8**, 10 a.m. Special Christmas Dairy Sale Including Cream of

Cedar-Crest Holsteins and Friends 2nd Edition, Fisher's Quality Dairy Sales, Ronks, Pa. Sale co-managed by Fisher's Quality Dairy Sales and Pa. Holstein Association.

**DEC. 11**, 10:30 a.m. Palmer Retirement Auction, Howard (Steuben Co.), N.Y. Sale managed by Pirrung Auctioneers.

**DEC. 14**, 10 a.m. Special Christmas Dairy Cow & Heifer Sale, Brubaker's Quality Dairy Sales, Shippensburg, Pa. Sale managed by Brubaker's Quality Dairy Sales.

### 2024

**FEB. 10**, Pa. Holstein Convention Sale, Scranton, Pa. Sale managed by Pa. Holstein Association.

## Advertiser's Index

A&A Fencing.....11	King's AgriSeeds.....4
AFE Builders .....17	Kreeger and Associates.....20
Agri-King.....24	Lancaster DHIA .....14
Agri-Trac.....9	LB Manufacturing .....21
Alpha Genetics (Immu-Pro) ....4	Martin's Roofing .....14
Bargain Page.....23	Morrissey Insurance .....4
Beiler Industries.....22	Myers, Roger Insurance.....10,18
Beitzel Spraying .....6	National Farmers .....15
Brubaker's Dairy Sales .....20	Nelson & Sons Concrete Grv.22
Brubaker, Rufus Refrigeration...6	New Holland Sales Stables ...21
Building Directory .....9	Nicholas Meat .....18
Corle Building Systems .....16	Patz .....18
Esch Hay Equipment .....11	Power Systems Electric .....9
Extrutech Plastics .....10	Precast Systems .....22
Farm Credit East.....12	Rigidply Rafter's .....10
Farmer Boy Ag.....13	Rissler Conveyors.....22
Fisher, Eli Construction.....15	Rissler, I.H. Manufacturing ....7
Fisher's Quality Dairy Sales .17	Shady Lane Curtains.....3
Fulton Bank .....8	Slate Road Supply.....4
GEA North America .....14	Sollenberger Silos.....22
Gehm, L.R. ....7	Sonco .....14
Groff, Larry & Sons .....6	Stolhaven Genetics .....11
Horst Grain Roasting .....22	Sturdy Built Manufacturing....7
Hosking Sales.....21	Triple M Farms.....22
I&J Manufacturing .....7	Udder Comfort .....2
JBS .....8	Willow Road Silo Doors.....22
JBZ Dairy Advantage .....5	Zimmermans Glass Storage .22
Keystone Concrete Products .15	

# FROM GROUNDBREAKING TO GRAND OPENING, WE DO IT ALL!



SPECIALIZING IN:

- ▶ Commercial & Agricultural Building & Remodeling
- ▶ Barn Reconstruction & Remodeling
- ▶ Residential & Commercial Excavation
- ▶ Concrete Wall, Slab & Road Cutting

Serving Lancaster and Surrounding Counties



17 N. King Street • Stevens, PA 17578  
 Office: (717) 336-2320 • Fax: (717)336-0892  
 Email: info@llgroffandsons.com • Web: llgroffandsons.com



### Barn Reconstruction



### Pole & Frame Buildings



### Commercial



### Agricultural Projects



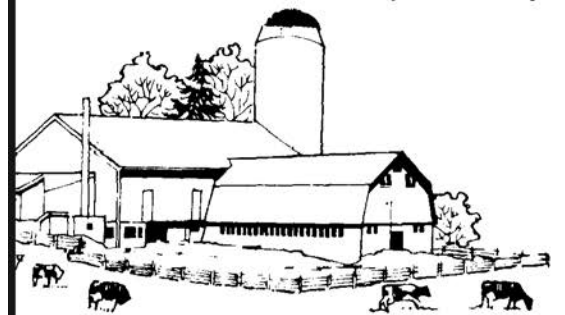
Toll Free 1-866-665-3525

**New & Used Quality Milk Tanks**  
 400 Gallon      1000 Gallon  
 700 Gallon      1500 Gallon  
 800 Gallon

**Walk-In Coolers and Freezers, Panels and Doors Available.**

## WHITE WASHING with ADVANTAGE FARM WHITE

- Dries White • No Wet Floor
- Is Compatible With Disinfectant And Fly Sprays
- Does Not Rub Off Easily
- Washes Off Windows And Pipelines Easily



## BARN CLEANING SERVICE AVAILABLE WITH COMPRESSED AIR

To have your barn cleaned with air it will clean off dust, cobwebs and lots of the old lime. This will keep your barn looking cleaner and whiter longer.

CALL US ABOUT ON THE FARM FLY CONTROL

Serving Southeastern Pa. And More

## Beitzel Spraying

Witmer, PA 17585 • 7:00 A.M. to 5:00 P.M.  
 717-392-7227 or Toll Free 1-800-727-7228

CERTIFIED COMMERCIAL APPLICATORS  
 LICENSED 45 YEARS EXPERIENCE INSURED

*Radio Dispatched Trucks*  
**Barn Spraying Is Our Business Not A Sideline**  
 Spraying Since 1961

# Generosity — from page 5

Troutman finds it to be a good cause. "We feel that this organization uses the proceeds wisely," she said. "We've been blessed and it's our duty to give back and help when and where we can."

Lynette Gelsing not only donates animals but also her time before and during the sale. "Brethren Ministries serves others during times of great loss and need. Being a volunteer on the heifer auction committee is a small way I can help," she shared.

Each year there is at least one consignment made in memory of a loved one. Lot #1 was donated in memory of Megan Walmer and her grandfather, Carl Wenger. Megan loved the atmosphere and purpose of the auction weekend and gave much of herself towards the cause before her passing in 2015.

Her family keeps her vision of helping with the relief auction going through their heifer donation.

Lot #2 was donated in memory of Joshua Heisey, who at 12-years-old passed away in a farm accident nearly three years ago. Joshua liked to attend the relief auction and even as a child was helping with the heifer auction. Not only did his family donate a heifer in his memory, but they also donated a cooler of meat that was from one of the last steers that Joshua had started to raise before he passed.

"As is the case with most of us, there are times we experience needs in life. Our family has experienced that and we have also experienced the generosity of many people when we needed it," said Joshua's father, Joel Heisey. "This is the motivation behind giving what we have and what we can to help others."

This simple concept of giving what you

have or doing what you can to help is a central theme that surrounds the purpose and mission of the Brethren Disaster Relief Auction. It's what brings everyone together because in some way, everyone can play a part in the effort to help those in need.

The majority of the money raised during the auction weekend goes towards purchasing construction materials to repair and rebuild after natural disasters. Most of the work projects are domestic, but sometimes internationally. Brethren Disaster Relief has another service branch of providing daycare to children so parents can put their focus on cleaning up and rebuilding their homes alongside the construction teams. Caregivers are trained to help children overcome the trauma of fear and loss.

The workers are volunteers sent from churches on mission trips and they usually cover their own travel expenses. Because of

all the volunteers, administration costs are low so funds go where they need to be used. Not everyone is skilled in carpentry or construction, but if they have a heart to serve they can be used greatly. Sometimes the work in particular areas is ongoing for months and even years. Rebuilding teams are currently active in Kentucky following floods and tornadoes and Children's Disaster teams have been sent to the wildfire areas in Hawaii.

Most dairy farmers can't sacrifice the time to physically help those far off in disaster-affected areas, but you could help in your own way by supporting next year's Brethren Disaster Relief Heifer Auction. Make plans now to set aside the day to attend the 2024 heifer auction next September! For information on how to help or donate, Mike Kunkle can be contacted at 717 269-8829 or online at [www.brethrenauction.org](http://www.brethrenauction.org).

## This show runs 24/7/365; tune in anytime

MADISON, Wis. — *The Dairy Show*, World Dairy Expo's podcast, is available on Amazon Music, Apple Podcasts, Google Podcasts, iHeart Radio, Spotify and online at [world-dairyexpo.com](http://world-dairyexpo.com)

New episodes of *The Dairy Show* are released on the second and fourth Tuesday of each month. Expo's podcast features a new guest on every episode discussing topics related to the global dairy industry.

"As the digital meeting place of the global dairy industry, Expo's podcast gives listeners a taste of Expo year-round," shares Katie

Schmitt, host of *The Dairy Show*. "The Dairy Show focuses on a variety of topics ranging from cows to the colored shavings to cutting-edge technology while introducing different guests to provide unique perspectives."

Listeners span the globe, representing over 110 countries, all 50 U.S. states, and 12 Canadian provinces and territories. Some of *The Dairy Show's* most popular episodes include "Judging on the Colored Shavings", "Fitting and Grooming Dairy Cattle", "Just Talking Cows" and interviews with Expo Recognition Award winners.

## It doesn't work- so they all say

*Simultaneous pulsation doesn't work so say the experts. You need a square, triangle, oval, or liner with some other special shape to get those cows with round teats to milk and not blow out the teat ends so your dealer and university claim.*

TridentPulsation™ eliminates machine damage, stops backwashing teats by simply reducing claw fluctuation and milking fast with a very efficient liner action achieved with a patented positive pressure fresh air system. Healthy fast efficient milking allows cows to last longer and yield better quality milk.

*Try it in your parlor – call us to get a demo unit for your parlor to experience faster milking with increased production.*

**Your dealer will say it doesn't work, we will guarantee that a demo in your parlor will show otherwise.**

[Trident@TridentPulsation.com](mailto:Trident@TridentPulsation.com)

TridentPulsation™ System  
607-849-3880 607-759-1037




### Twin Vertical Auger TMR Feedcart

**Features include:**

- 5 sizes from 45 to 110 cu.ft.
- Stainless Steel mixing chamber
- Stainless Steel auger flight
- 14" Carbide-tipped hay knives



**Free brochure!**  
1-800-436-5623

**I. H. RISSLER**  
— TMR MIXERS SINCE 1981

**Innovation. Technology. Precision.**

- Sickle bars available up to 9 ft.
- Other models available in ground drive, PTO and engine drive.

**5% off all goods bought and paid for by Dec. 20**

**Double cutting sickle bar cuts like scissors instead of a knife.**

The cleaner cut promotes faster regrowth and eliminates plugging.





**I & J mfg.** (717) 442-9451  
10 S. New Holland Road, Suite 2  
Gordonville, PA 17529



**ROTARY FLUSH WATERER Jr.**  
Shown with (optional) Frost-Free Insulated Pedestal



**Stainless Rotary Flush Waterers**

- Two models: Standard model and the reduced capacity Junior model
- Grade 304 stainless steel construction
- Smooth, round-bottom construction without corners to collect dirt
- Large poly bearing with stainless steel axle
- Hinging float cover for easy service access
- (Optional) back splash helps keep cowbeds dry



**Clean Water is Essential!**

Call 866-543-5116

[sales@sturdybuiltmfg.net](mailto:sales@sturdybuiltmfg.net)  
260 S. Muddy Creek Rd. Denver, PA 17517



Request a FREE Free Stall Equipment Guide!



# Where do you find satisfaction in your life?

By **BARB LUMLEY**  
Ohio Farm Wife

Although I am not personally acquainted with any of them, it is my understanding that there are millionaires, billionaire and trillionaires alive and well and wheeling and dealing in our country. They constantly seek to acquire more power and more money to become richer. My question for all of them is: "Where does your satisfaction come from?"

How many of those people have stayed with one man or one woman through their years of marriage without having an affair or a lover or mistress on the side? How many have been loving, caring parents and are loved by all their children? How many have a good relationship and are on good terms with other family members? How many can truly and completely trust the people they call friends? How many are respected by the people involved in their lives?

Yes, enough money will buy just about anything. We all

need to sleep. So when you sleep in a mansion do you sleep any differently than you would in a log cabin, a tent or homeless on the street? No matter who you are or where you are, everybody at some point in time closes their eyes and sleeps — your body insists on it! Have you been fortunate enough to wake up in the morning and open your eyes? Everybody, everywhere, rich or poor, hopes to do the same thing each and every day!

Do you eat? Everyone has to eat to live, it doesn't matter what the food is. Caviar and prime rib or steak doesn't make you live any longer than bacon, eggs and toast. No matter whose body it is, you must eat food for growth, health, strength and to live. Fluids are essential, water is necessary, milk is good for you, most people insist on coffee—booze pretty much affects most people, both rich and poor, in unhealthy and harmful ways.

What gives you satisfaction in your work? Is there really more satisfaction for a person running a huge corporation

than there is for someone who creates something with their brain or hands? Regardless of what your job is, if you work hard, do the best you know how to do, and complete the job, you have every right to feel satisfied.

A good friend recently asked me, "Why don't more people feel satisfaction in things the way that farmers do?" Farmers are not rich, they have to work hard and most are on duty twenty four hours a day because of the unexpected things that can happen on a farm. They are farmers because they love the land, the animals and their families. Living on a farm means family members are involved every day, in every way, and that brings satisfaction. There are so many things—watching a beautiful sunrise early in the morning as you climb on the tractor and head for the fields, counting the number of bales of hay in the barn as October approaches and you know winter is coming, eyeing the golden brown color of the soybeans as they begin to turn, standing back, wiping sweat and admiring the job well done in cleaning the chicken barn as you await a load of chicks to arrive, listening to the sounds at milking time and watching the bulk tank fill. I could go on and on! So much satisfaction is found on the farm and money has nothing to do with it! A farmer doesn't get rich on the crops grown or the livestock raised, but the farmer's life can be filled with satisfaction and pride in what he does.

Both the rich man and the poor man puts his pants on one leg at a time, regardless of the material they are made from. Both are glad to have a pair to wear when cold weather sets in! Every person, rich or poor, will die at some time. No person will take anything with them—definitely not money. Even if they purchase their coffin and conceal the money in it prior to their death, it is guaranteed that there will be someone who will thoroughly check things out before they close the lid! So what good does it do to lie, cheat and steal as so many well-known people seem to be doing these days? They should know "that you can't take it with you"! So, I ask again, "Where does their satisfaction come from?" Or do they never find or feel satisfaction?

Satisfaction is the pleasure derived from the fulfillment of ones wishes, expectations or needs. It is pleasure, contentment and gratification. Satisfaction is not always felt immediately. Sometimes it takes time and a large amount of patience.

## AGRICULTURAL SERVICES

# CULTIVATING RELATIONSHIPS.

*That's personal.*



**Fulton Bank** | AGRICULTURAL SERVICES GROUP

1.800.752.9580 | [fultonbank.com](http://fultonbank.com)

Fulton Bank, N.A. Member FDIC.

**(JBS)**

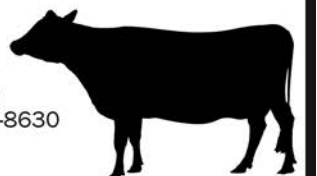
Souderton, PA

**SELL YOUR CATTLE!**

**PURCHASING CULL COWS**

**Same-Day Payment  
NO Fees • NO Commission**

For more information:  
Direct: (970) 506-8215  
Duff George: (717) 594-8630



Livestock Buying Stations are OPEN:

7195 Molly Pitcher Hwy  
Greencastle, PA 17225  
Monday & Wednesday  
9 a.m. - 2:30 p.m.

503 School Rd  
Denver, PA 17517  
Tuesday & Thursday  
9 a.m. - 2:30 p.m.

Contact Doug Musser: (267) 371-9824

**(JBS)** Learn more about our brands at [jbsfoodsgroup.com](http://jbsfoodsgroup.com)

249 Allentown Rd | Souderton, Pennsylvania 18964 USA

# 97 Milk from page 3

there and people are talking about milk in a whole different way," he said.

Representative Zimmerman listened to many ideas from the group how the state could make whole milk available at schools in different ways, such as vending machines through FFA chapters and using the role of school boards to make decisions for the school.

"You've done all the right things to move this along," Zimmerman said. "The question is how can we move it to change policy." While some frustrations were shared about the struggle of the process, Zimmerman assured the group that their efforts are not in vain and that they need to continue to put pressure on elected officials in the federal government.

97 Milk Marketing Manager Jackie Behr gave a very encouraging report of the media outreach she is involved with. The website, [www.97milk.com](http://www.97milk.com), receives 75-100 views per day and 82% of those views are from first time visitors. This shows the effectiveness of current outreach to bring in curious consumers.

The website has evolved drastically in the last few years and Behr highlighted several new features. Users now have the help of a search bar, there's a Q&A with dietician section, quick milk fact blurbs, news, and downloads. There's also an area to spread awareness of whole milk in schools and how to take action.

The website features a store, ways to donate, a listing of upcoming events, and ways to get involved.

Social media posts occur six days a week on Facebook and Instagram to tens of thousands of followers. Everyone is encouraged to interact with the posts and especially share them. Behr is able to interact with consumers asking questions on the posts.

Campaign Coordinator Mark Leid shared about upcoming events 97 Milk will be participating in and asked for volunteers. 97 Milk will be at a Christmas with the Cows event in December, Keystone Farm Show in January, and planning for the popular Amish Wedding Feast fundraiser is in the works. Leid asked for everyone to help with even just one event a year.

Members from the New York chapter of 97 Milk made the trip for the meeting. Jay Hoyt and Duane Spaulding each shared the incredible job they are doing with their activities in their state. "Any group that you talk to that says they want to help farmers will tell you that the biggest obstacles that face the farmer are environment or labor. None of that matters if you don't have people drinking milk," Hoyt declared. "If you don't have kids drinking milk you won't have anything!"

Hoyt and Spaulding have tripled the amount of events at fairs and with the public. "I'm not doing this anymore for the farmer than I'm doing it for the kids in those schools. That's what I really care about is my granddaughter and those kids getting the nourishment they need," Hoyt shared.

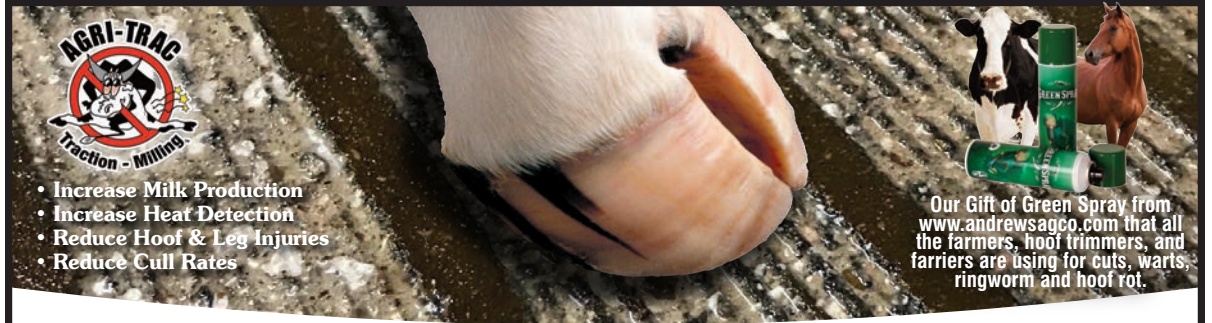
97 Milk has the capacity to make a real difference and be the change. The next time a public 97 Milk meeting is announced, be resolute to set aside the time to attend. It will be an encouraging and inspiring time. Until then, find ways to be involved even if it's as simple as distributing and displaying 97 Milk materials.

# Dairy farm safety video series offered

HARRISBURG, Pa. – The Center for Dairy Excellence and the Professional Dairy Managers of Pennsylvania (PDMP) has a farm safety video series available to help dairy producers share simple safety reminders with farm employees. The "Seconds for Your Safety" videos, designed to be approximately 60 seconds in length, are available in both English and Spanish and can be watched and shared easily on a computer or cell phone. They will cover topics such as safety around animals, fall prevention measures, tractor and truck rollovers, youth on the farm, and more.

The video in the series is available and shares quick tips and precautions dairy producers can take around horizontal silos, especially during harvest. To view the English and Spanish versions of the video, visit [www.centerfordairyexcellence.org/farm-safety](http://www.centerfordairyexcellence.org/farm-safety).

If you know a dairy producer without Internet access who might benefit from watching the videos or sharing them with farm employees, email Emily Barge at [ebarge@centerfordairyexcellence.org](mailto:ebarge@centerfordairyexcellence.org) or call 717-346-0849 to request access.



**AGRI-TRAC Traction-Milling**

- Increase Milk Production
- Increase Heat Detection
- Reduce Hoof & Leg Injuries
- Reduce Cull Rates

Our Gift of Green Spray from [www.andrewsagco.com](http://www.andrewsagco.com) that all the farmers, hoof trimmers, and farriers are using for cuts, warts, ringworm and hoof rot.

"Agri-Trac works so good after they milled our floors our milk count went up 2lbs per day without changing anything else! You can see the confidence our cows have now when walking and running. No more down cows with grooving! Thank you AGRI-TRAC!"  
**Ron Deboover, Vince Deboover Farms**  
Geneva, NY

"Right after my barn floors were milled we had real Traction for the first time since we started milking cows. I realized a 5lb per cow increase right off. My cows are completely different. I will never groove again! Thank you AGRI-TRAC!" **Derrick Nop, Montgomery, NY**

"AGRI-TRAC Traction Milling works 100%! I have grooving and it does not work! AGRI-TRAC milled right over my grooving and fixed it! I will stick to AGRI-TRAC in the future!"  
**Robert Musser, Shippensburg, PA**

"We had slippery floors and lost cows. Now my cows have real traction! This is a game changer for us. Thanks to Agri-Trac now our cows are happy. This is a game changer. I will never groove again!"  
**Matthew Rohrer, Rockingham, VA**

"I still lost cows when I grooved. Agri-Trac came in and changed that! This is real Traction for my cows! I noticed the difference right away! I liked it so much I had them come back and do the rest of my barns! No more grooving for us! Thanks Agri-Trac!"  
**Unc Brock, Schaghticoke, NY**

"AGRI-TRAC Traction Milling lasts and it won't wear! It works! I believe in it! No more slippery floors! No more grooving every few years! AGRI-TRAC lasts far longer than grooving. No more lame or down cows!"  
**Jim Akam, Concord Valley Farms**  
Spartansburg, PA

**Our best discounts of the year!**

**Call to find out more: 717-682-8557 or toll free 877-966-3546.**

**Agritraction.com**

# Directory of Building Contractors

for new and renovated dairy facilities and other farm buildings



**Power Systems Electric Inc.**

**Emergency Generator Systems & Service**  
885 South Railroad Street, Myerstown, Pa 17067

**Sales, Service, & Rentals**  
Providing service for most brands



**Maintenance Programs**

New & Used  
Gen Sets,  
Transfer Switches,  
PTO Gens.

**24 HR  
EMERGENCY  
SERVICE**



[info@psegenerators.com](mailto:info@psegenerators.com)  
[www.psegenerators.com](http://www.psegenerators.com)

For all your generator needs call  
(717)933-5617



**RYAN SERVICES, INC.**

Building Relationships

**Joseph M. Ryan**

3179 Quaker Valley Road  
New Paris, PA 15554  
[info@ryanservicesinc.com](mailto:info@ryanservicesinc.com)

Cell: 814.285.6129 Office/Fax: 814.839.4826

Specializing in construction & renovation of agricultural buildings

Dairy Facilities • Pole Barns • Free Stall Barns  
Concrete Work • Reroofing • Horse Barns

**WHITE HORSE  
CONSTRUCTION**

**1-888-385-2360 • 1-610-593-5559**



**Premier Dairy Facilities**  
**Dean Hoover**

King Construction Co., LLC  
525 Hollander Rd.  
New Holland, PA 17557

Office: (717) 354-4740  
Cell: (717) 304-4993  
[dhoover619@comcast.net](mailto:dhoover619@comcast.net)



**DAIRY HOUSING  
CONSTRUCTION & REMODELING**

Free Stall Barns • Tie Stall Barns  
Heifer Barns • Calf Barns • Robotics  
Special Needs • Manure Handling

*Quality & Value in Construction*

(800) 845-3374 **FARMER BOY** [FarmerBoyAg.com](http://FarmerBoyAg.com)

Parts You Need.  Brands You Know.  Prices You Can Afford.

**E&F Ag Systems**

Ag Construction & Equipment

New freestall & heifer barns.

Freestall barn renovations.

We specialize in all types of dairy curtains.

2812 Old Phila. Pk.

(717) 768-0304

Bird in Hand, PA 17505

**Building Contractors:**

Our directory of building contractors runs the 2nd and 4th weeks of each month. Call our advertising department to find out how to be included.

**717-656-8050**



# Lancaster DHIA

New England, New Jersey, New York

OCTOBER 2023

## NEW HAMPSHIRE

### Cheshire County

MALNATI, VINCENT & CAROL 83 HO 20432 821 630

### Grafton County

GRAFTON COUNTY FARM 54 HO 29999 1226 947  
 PATCH FAMILY 94 HO 25123 1113 805

**HERDS WITH A RHA SCC LESS THAN 200,000**

GRAFTON COUNTY FARM HO 50 54  
 PATCH FAMILY HO 157 94

### Merrimack, Belknap Counties

BOHANAN FARM 134 HO 25649 1038 820  
 CATE JONATHON 60 XX 17574 812 599

**HERDS WITH A RHA SCC LESS THAN 200,000**

BOHANAN FARM HO 185 134

### Sullivan County

GARY LECLAIR 274 HO 29660 1190 951  
 PUTNAM FARMS, INC. 431 HO 26312 1129 837  
 MACGLAFLIN FARM LLC. 504 HO 24371 1180 782  
 PUTNAM FARMS, INC. 68 XX 21975 1092 761  
 LUTHER, JOHN W. 28 HO 23046 864 736  
 CLARK, GREGORY & MARCIA 37 HO 20867 811 656  
 LUTHER, JOHN W. 13 JE 15980 803 594  
 CLARK, GREGORY & MARCIA 38 MS 16405 596 517

**HERDS WITH A RHA SCC LESS THAN 200,000**

CLARK, GREGORY & MARCIA HO 70 37  
 PUTNAM FARMS, INC. XX 93 68  
 LUTHER, JOHN W. HO 99 28  
 PUTNAM FARMS, INC. HO 145 431  
 MACGLAFLIN FARM LLC. HO 163 504  
 CLARK, GREGORY & MARCIA MS 175 38  
 GARY LECLAIR HO 196 274

## VERMONT

### Addison County

B. DANYOW FARM LLC. 1078 HO 31563 1290 1007  
 VORSTEVLED FARM 1488 HO 29212 1274 987  
 LUCAS, JONATHAN 348 HO 28122 1170 898  
 DEGRAAF, HAROLD & ANJE 11 HO 28296 1223 877  
 DEGRAAF, HAROLD & ANJE 175 HO 27764 1196 864  
 CORREIA, ANTHONY & BARB 426 HO 25956 1088 864  
 ANDY NOLAN 320 HO 25151 1099 838

TUDHOPE, MILES & CHERYL 64 HO 25218 1088 827  
 B. DANYOW FARM LLC. 52 XX 23373 1070 814  
 TUDHOPE, MILES & CHERYL 55 BS 21601 952 758  
 PHILLIPS, DANIEL T. 42 XX 16529 672 510

**HERDS WITH A RHA SCC LESS THAN 200,000**

TUDHOPE, MILES & CHERYL BS 62 55  
 LUCAS, JONATHAN HO 78 348  
 TUDHOPE, MILES & CHERYL HO 81 64  
 CORREIA, ANTHONY & BARBARA HO 96 426  
 B. DANYOW FARM LLC. HO 98 1078  
 B. DANYOW FARM LLC. XX 98 52  
 DEGRAAF, HAROLD & ANJE HO 117 175  
 PHILLIPS, DANIEL T. XX 128 42  
 DEGRAAF, HAROLD & ANJE HO 144 11  
 VORSTEVLED FARM HO 159 1488  
 ANDY NOLAN HO 160 320

### Caledonia County

WAYSIDE MEADOW FARM 357 HO 30071 1247 1014  
 DON-SIM FARM 135 HO 25694 1038 826  
 FREMONT & ETHAN NELSON 227 HO 24333 1018 779  
 LUCKY HILL FARM 179 JE 19572 1067 764  
 JAMES W. SEYMOUR 74 HO 23033 1030 750  
 ACKERMANN DAIRY 66 HO 22264 922 717  
 LAGGIS BROS. 517 JE 18097 947 645  
 BRIAN NICHOLS 105 XX 17617 837 636  
 FREMONT & ETHAN NELSON 28 XX 18256 818 632  
 WILLSON, DOROTHY & A 91 XX 16646 797 605  
 SOMERS, BRIAN & KATHLEEN 45 JE 14704 716 532

**HERDS WITH A RHA SCC LESS THAN 200,000**

FREMONT & ETHAN NELSON XX 89 28  
 JAMES W. SEYMOUR HO 97 74  
 SOMERS, BRIAN & KATHLEEN JE 97 45  
 WAYSIDE MEADOW FARM LLC. HO 97 357  
 ACKERMANN DAIRY HO 109 66  
 FREMONT & ETHAN NELSON HO 117 227  
 BRIAN NICHOLS XX 140 105  
 DON-SIM FARM HO 145 135  
 BEAN, ERIC JE 166 41  
 LUCKY HILL FARM JE 167 179  
 LAGGIS BROS. JE 175 517

### Chittenden County

CREAM 65 HO 26480 1068 821  
 TAFT, BRUCE & MARY 313 JE 17964 1002 682  
 SHELBURNE FARMS 122 BS 17906 751 604

**HERDS WITH A RHA SCC LESS THAN 200,000**

SHELBURNE FARMS BS 105 122

### Essex County

ROUTHIER & SONS, INC. 346 HO 25146 1059 809  
 RUSSO, STEPHEN & CARLA 16 HO 22001 931 706

**HERDS WITH A RHA SCC LESS THAN 200,000**

ROUTHIER & SONS, INC. HO 78 346  
 RUSSO, STEPHEN & CARLA HO 128 16

### Franklin County

HOWRIGAN HOME FARM 286 HO 31611 1103 1003  
 HOWRIGAN, H.J. & A. & LA 361 HO 29509 1112 941  
 HOWRIGAN H-9 DAIRY 359 HO 28943 1112 918  
 MIKE BENJAMIN 543 HO 27009 1078 860  
 MCGARRY DAIRY LLC. 124 HO 25178 1038 813  
 HOWRIGAN, HAROLD J. & SO 350 HO 24801 976 807  
 BALLARD ACRES 243 HO 24575 1071 798  
 DALESTEAD FARM & MAPLE 97 HO 23026 978 732  
 CARPSDALE FARMS LTD. 71 HO 23070 891 730  
 PAUL-LIN DAIRY LLC. 27 JE 15961 745 593  
 RANDY & AMY FERRIS 78 JE 16370 756 576  
 WILLIAMS, BEN 72 HO 17972 731 558

**HERDS WITH A RHA SCC LESS THAN 200,000**

WILLIAMS, BEN HO 78 72  
 MIKE BENJAMIN HO 94 543  
 CARPSDALE FARMS LTD. HO 96 71  
 PAUL-LIN DAIRY LLC. JE 113 27

HOWRIGAN, HAROLD J. & SONS HO 120 350  
 HOWRIGAN HOME FARM HO 130 286  
 BALLARD ACRES HO 133 243  
 RANDY & AMY FERRIS JE 138 78  
 MCGARRY DAIRY LLC. HO 140 124  
 WILLIAMS, BEN JE 142 35  
 HOWRIGAN, H.J. & A. & LAWRENCE HO 145 361  
 DALESTEAD FARM & MAPLE LLC. HO 167 97  
 BLODGETT, JAMES & DAWN JE 196 50  
 GREG BOUCHARD XX 197 125

## Grand Isle County

**HERDS WITH A RHA SCC LESS THAN 200,000**

J. & M. LADD FAMILIES FARM 72 XX 19275 691 595  
 J. & M. LADD FAMILIES FARM XX 95 72

## Lamoille County

MORRILL, ARTHUR & LARRY 30 HO 21039 920 678  
 KEEWAYDIN FARM 93 JE 17742 897 662

**HERDS WITH A RHA SCC LESS THAN 200,000**

MORRILL, ARTHUR & LARRY HO 42 30  
 KEEWAYDIN FARM JE 81 93

## Orange County

GLADSTONE, WALTER & MA 1940 HO 32545 1271 1085  
 GLADSTONE, WALTER & MA 42 JE 22845 1241 886  
 HARKDALE FARM, INC. 59 HO 26262 1169 859  
 WHITE, ELIJAH & MARY 123 HO 22293 994 757  
 ADAM BEAULIEU 68 HO 22686 938 736  
 HARKDALE FARM, INC. 115 JE 18054 1026 692  
 SILLOWAY FARMS 66 HO 20818 815 656  
 ALLENVILLE FARM 89 HO 21082 818 651  
 WHITE ROCK FARM 150 JE 17750 922 649  
 GRAY, KIM 23 JE 17127 838 637  
 ROBERT J. HOWE 26 HO 19616 770 598  
 CHARLES P. CARRIER 128 HO 17154 745 543  
 WRIGHT, ANDREW 49 XX 15319 701 539

**HERDS WITH A RHA SCC LESS THAN 200,000**

GLADSTONE, WALTER & MARGARE JE 85 42  
 GRAY, KIM JE 98 23  
 GLADSTONE, WALTER & MARGARE HO 99 1940  
 HARKDALE FARM, INC. JE 101 115  
 ALLENVILLE FARM HO 115 89  
 SILLOWAY FARMS HO 125 66  
 CONANT, DEAN & TERRI AY 127 47  
 ROBERT J. HOWE JE 129 13  
 OUGHTA-BE-FARM LLP XX 129 61  
 HARKDALE FARM, INC. HO 138 59  
 SMALL, STEVEN & ETHAN JE 138 47  
 WRIGHT, ANDREW XX 153 49  
 HOYT, AMBER & SCOTT AY 160 47  
 WHITE ROCK FARM JE 177 150  
 CHARLES P. CARRIER HO 182 128  
 WHITE, ELIJAH & MARY HO 186 123

## Orleans County

ANDY & SARAH BIRCH 31 HO 26614 1168 865  
 NADEAU, AARON & CHANT 152 HO 24705 1008 775  
 ADAM & JOANNA LIDBACK 55 HO 22795 973 735  
 SHEENA BROWN 44 HO 23790 892 733  
 WEBSTER, DANIEL & MEGAN 81 HO 21717 903 730  
 ANDERSONVILLE FARM LLC. 239 HO 21874 874 712  
 BROE, JOHN & DEANNA 15 HO 22838 1019 711  
 JOSH POULIN 422 JE 18819 986 707  
 EDWARDS, LYLE & KITTY 50 HO 21306 852 664  
 BROE, JOHN & DEANNA 60 XX 18905 903 636  
 ANDY DELABRUERE 49 HO 20042 778 619  
 LISAI, PAUL 63 XX 19500 945 595  
 RANDALL FAMILY FARM 111 HO 18892 733 594  
 PADDLEBRIDGE HOLSTEINS 61 HO 19735 749 591  
 ADAM & JOANNA LIDBACK 26 XX 16543 799 587  
 PATENAUDE, RON 179 XX 18900 710 587  
 WHITTEMORE, DAKOTA & 42 JE 14623 789 539  
 ANDREWS ANDY 228 HO 16636 653 507

# WE SHARE YOUR VALUES

Integrity. Respect. Compassion.

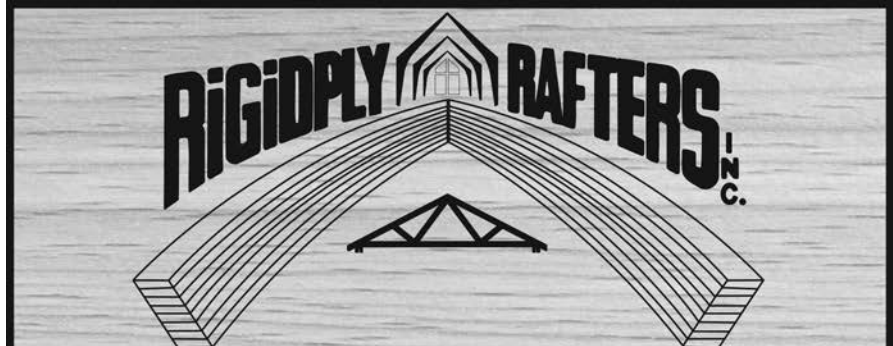
The values many farmers hold are also the values that define Goodville Mutual, a faith-based insurance company.

For insurance designed specifically for your farm and budget, contact Roger W. Myers, your local Goodville agent.






**ROGER W. MYERS**  
 INSURANCE AGENCY  
 570-546-2845  
 RogerMyersAgency.com  
 183 EAST WATER ST • MUNCY, PA 17756

**Goodville Mutual**  
 Casualty Company



# RIGIDPLY RAFTERS, INC.

**OUR TRUSSES ARE TRUE, STRAIGHT AND FIT YOUR BUILDING!**

**717.866.6581**  
**WWW.RIGIDPLY.COM**  
 701 E. Linden Street, Richland PA 17087

# EXTRUTECH FORM Wall System

Perfect for Robotic and Parlor Walls

**HOLY COW!**  
 Those panels are bright!



**Call Today for DETAILS!**

- Concrete Form System
- Water and corrosion-proof
- Custom cut panel lengths to 20 feet
- 6" and 8" thick stay-in-place concrete form
- Cleans easily - low maintenance
- Brightens the interior of any building
- Fewer seams - 2 foot wide panels
- Resists mold, mildew, bacteria growth
- Available in a bright white, high gloss, hard surface
- Low maintenance, easy-to-clean, with water/mild cleaner
- Protective film on both sides keeps panels clean during construction

**Perfect for Robotic Milking Rooms**  
 Suspended Ceiling Panels, Partition Walls, and Doors also Available

**Interlocking Wall & Ceiling Liner Panels**

**Poly Board® Panels**  
 P1300 - 12" wide  
 P1600 - 16" wide  
 P2400 - 24" wide

**20 YEAR LINER PANEL WARRANTY**

See our new FORM PANEL construction video on our web site.

**Manufacturing American-Made PVC Panels for 31 Years!**

Since 1992  
**EXTRUTECH PLASTICS, INC.**  
 www.epiplastics.com  
 Ph: 888-818-0118

ISO 9001:2015  
 Celebrating 31 Years of American-made Products

**HERDS WITH A RHA SCC LESS THAN 200,000**

ADAM & JOANNA LIDBACK	XX	67	26
LISAL, PAUL	XX	80	63
ANDY DELABRUERE	HO	86	49
ANDREWS, ANDY	HO	104	228
PATENAUDE, RON	XX	110	179
ADAM & JOANNA LIDBACK	HO	116	55
BROE, JOHN & DEANNA	XX	120	60
BROE, JOHN & DEANNA	HO	128	15
NADEAU, AARON & CHANTALE	HO	130	152
ANDERSONVILLE FARM LLC.	HO	139	239
PADDLEBRIDGE HOLSTEINS	HO	146	61
EDWARDS, LYLE & KITTY	HO	163	50
JOSH POULIN	JE	164	422
RANDALL FAMILY FARM	HO	165	111
SHEENA BROWN	HO	172	44
DEMAINE, DAN	XX	187	38
WEBSTER, DANIEL & MEGAN	HO	197	81

**Rutland County**

MEDALLION JERSEY LLC.	99 JE	17381	890	666
<b>HERDS WITH A RHA SCC LESS THAN 200,000</b>				
MEDALLION JERSEY LLC.	JE	121	99	

**Washington County**

FAIRMONT FARM	1602 HO	29586	1239	976
FRANK, MARILYN & KIRT JOH	65 HO	18673	673	582
MOLLY BROOK FARM LLC.	82 JE	14561	695	546
<b>HERDS WITH A RHA SCC LESS THAN 200,000</b>				
MOLLY BROOK FARM LLC.	JE	114	82	
VONTREP FARMSTEAD	XX	112	56	
FRANK, MARILYN & KIRT JOHN	HO	159	65	
FAIRMONT FARM	HO	169	1602	

**Windham County**

WESTMINSTER FARM	819 HO	29514	1216	956
MARK, SUE, SAM, KELTSEY	34 HO	26026	1089	836
VERN-MONT FARM LLC.	543 HO	26084	1116	833
MILLER, PETER	255 HO	25972	1017	790
HAMILTON, JAKE	48 HO	22150	923	691
MARK, SUE, SAM, KELTSEY	28 JE	17424	913	639
MALCOLM SUMNER	45 JE	14171	724	509
THE CORSE FARM	48 XX	15761	643	504
<b>HERDS WITH A RHA SCC LESS THAN 200,000</b>				
WESTMINSTER FARM	HO	119	819	
THE CORSE FARM	XX	123	48	
MARK, SUE, SAM, KELTSEY RUSHTO	JE	144	28	
MILLER, PETER	HO	149	255	
MARK, SUE, SAM, KELTSEY RUSHTO	HO	149	34	
THE PUTNEY SCHOOL	XX	149	32	
HAMILTON, JAKE	HO	170	48	
VERN-MONT FARM LLC.	HO	170	543	
LILAC RIDGE FARM	HO	174	41	

**Windsor County**

RHOMAN WAI	642 HO	28065	1103	889
DOLLOFF, MICHAEL & HEIDI	77 HO	26952	1154	856
LEMAX FARM	112 HO	23728	976	774
PEGGY AINSWORTH	48 HO	21318	926	694
MILLER, GEORGE	32 JE	16404	791	617
JEFFREY & DAVID TOWN	209 HO	17877	698	555
SPRING BROOK FARM	49 JE	14626	667	522
<b>HERDS WITH A RHA SCC LESS THAN 200,000</b>				
PEGGY AINSWORTH	HO	103	48	
MILLER, GEORGE	JE	115	32	
RHOMAN WAI	HO	122	642	
DOLLOFF, MICHAEL & HEIDI	HO	126	77	
BILLINGS FARM MUSEUM	JE	132	47	
SPRING BROOK FARM	JE	133	49	

**MASSACHUSETTS**

**Franklin County**

CLESSIONS DAIRY	53 HO	26959	1120	850
HUNT FARM	165 HO	22717	834	708
GUNN, STEVE	62 HO	20815	889	663
<b>HERDS WITH A RHA SCC LESS THAN 200,000</b>				
HUNT FARM	HO	155	165	
GUNN, STEVE	HO	187	62	

**Hampshire County**

PARSONS, HENRY & EDWARD	79 HO	22838	1074	798
<b>HERDS WITH A RHA SCC LESS THAN 200,000</b>				
PARSONS, HENRY & EDWARD	HO	91	79	

**Worcester County**

CATLIN FARMSTEAD	187 HO	25292	1054	813
KARL HEINS	36 HO	19382	733	616
KOEBKE, JIM & KRISANN	18 HO	17147	634	522
<b>HERDS WITH A RHA SCC LESS THAN 200,000</b>				
KARL HEINS	XX	178	52	

**RHODE ISLAND**

**Providence County**

WRIGHT'S DAIRY FARM	115 HO	27470	1195	889
<b>HERDS WITH A RHA SCC LESS THAN 200,000</b>				
WRIGHT'S DAIRY FARM	HO	193	115	

**CONNECTICUT**

**New London County**

SNURKOWSKI, STEVE	90 HO	24549	951	765
CLARK WOODMANSEE III.	134 HO	23392	1138	743
<b>HERDS WITH A RHA SCC LESS THAN 200,000</b>				
CLARK WOODMANSEE III.	HO	142	134	
SNURKOWSKI, STEVE	HO	157	90	

**Windham County**

ROCK MAPLE FARM 1	21 HO	23648	948	724
ROCK MAPLE FARM 1	20 BS	18810	835	662
ROCK MAPLE FARM 1	38 JE	17220	863	618
ROCK MAPLE FARM 1	12 XX	17588	756	586
<b>HERDS WITH A RHA SCC LESS THAN 200,000</b>				
ROCK MAPLE FARM 1	XX	151	12	
ROCK MAPLE FARM 1	HO	182	21	

**NEW YORK**

**Allegany County**

HESS, LESTER E.	64 HO	27173	1078	842
PLOETZ, GARY & PAT	46 HO	26183	965	797
WILLIAM HALL	127 HO	24349	1075	772
<b>HERDS WITH A RHA SCC LESS THAN 200,000</b>				
PLOETZ, GARY & PAT	HO	109	46	

**Broome County**

WINSOR ACRES	2032 HO	28970	1114	907
SCOTT GLEZEN	2208 HO	26477	1063	849
<b>HERDS WITH A RHA SCC LESS THAN 200,000</b>				
WINSOR ACRES	HO	77	2032	

**Cayuga County**

EZRA WEAVER	85 HO	28886	1151	923
LEROY & CYNTHIA HORST	134 HO	26996	1053	822
HOOVER, ERNEST	91 HO	26974	1110	808
JASON & BETHANIE GLICK	92 JE	15913	761	560
<b>HERDS WITH A RHA SCC LESS THAN 200,000</b>				
LEROY & CYNTHIA HORST	HO	40	134	
EZRA WEAVER	HO	150	85	
JASON & BETHANIE GLICK	JE	156	92	

**Chautauqua County**

COUNTRY AYRE FARMS LLC.	672 HO	28116	1186	920
COUNTRY AYRE FARMS LLC.	27 XX	24583	1107	828
COUNTRY AYRE FARMS LLC.	66 JE	21216	1103	774
TOM & SONJA STRATTON	77 HO	21558	885	700
PHILIP BECKERINK	73 HO	21618	869	689
FINN STAR FARMS	31 HO	21620	834	680
<b>HERDS WITH A RHA SCC LESS THAN 200,000</b>				
TOM & SONJA STRATTON	HO	61	77	
FINN STAR FARMS	HO	77	31	
PHILIP BECKERINK	HO	126	73	

**Herkimer County**

SAMUEL S. KING	69 HO	26223	1006	824
JONATHAN SHIRK	43 HO	23833	1007	741
IRVIN LEID	52 HO	22966	949	695
<b>HERDS WITH A RHA SCC LESS THAN 200,000</b>				
JONATHAN SHIRK	HO	133	43	
SAMUEL S. KING	HO	189	69	

**Montgomery County**

PETERSHEIM, IVAN & ESTHER	71 HO	22722	902	711
NESTLE RIDGE FARM	47 HO	21709	921	661
SAMUEL L. STOLTZFUS	60 XX	20062	872	643
DANIEL B. STOLTZFUS	56 HO	19958	906	639
ABRAM MILLER	46 HO	21150	805	635
DELLAVALLE FARM	21 HO	19763	780	623
DREAMROAD JERSEYS LLC.	77 JE	16485	799	600
KEVIN MANSFIELD	90 JE	14277	729	513
<b>HERDS WITH A RHA SCC LESS THAN 200,000</b>				
DELLAVALLE FARM	HO	119	21	
PETERSHEIM IVAN & ESTHER	HO	188	71	
KEVIN MANSFIELD	JE	195	90	

**Ontario County**

LAKE COUNTRY HOLSTEINS	78 HO	31449	1219	993
NEVIN SENSENIG	53 HO	29488	1209	943
HARVEY SENSENIG	60 HO	28680	1136	937
NELSON SENSENIG	50 HO	28553	1139	918

turn to page 18

**Do you have heavy crops such as Cereal Rye, Trifoliate, 1st cutting Alfalfa?**

# HAY TEDDERS

**Do you need a Tedder that can handle these crops?**

**Contact Esch Hay Equipment for a Tedder that is built to handle these crops!**




**New tedders have a:**

- One year warranty
- Hyd. fold and tilt
- Lifetime warranty on tine arms
- New tine design with 4x less breakage
- Four sizes to fit your needs
- 2-star 9 ft. wide
- 4-star 18 ft. and 22 ft. wide
- 6-star 32 ft. wide

Call us for a dealer near you or stop by our location at:

**Esch Hay Equipment LLC**  
3230 E. Gordon Rd., Gordonville, PA 17529  
717-768-0600

# BARN Meeting



**Stolhaven Genetics LLC 2023 Barn Meeting**

**PLACE:** Christ King Farm, 547 Lenover Road, Parkesburg, Pa.  
**DATE:** Friday, December 1, 2023  
**SPEAKER:** John Vonks from Netherlands. John will be speaking on:

- Politics in Europe and Netherlands
- Their farm and their way of farming
- Breeding with AAA and how we use it

**MEETING SCHEDULE:**  
9:30 a.m., Coffee and donuts, browse through the barn  
10:15 a.m., Speaker - John Vonk  
11:00 a.m., Amy Beckham - Better form, better function  
11:45 a.m., Triple-Hil - New bulls in the past year

*Due to limited space, we ask that only one person from each farm attend, the exception being a hired man or older son involved in the farm operation. Please let us know if you are coming to the meeting so we know how much food to prepare. Call Amos at 717-672-1838.*

**If you need transportation, contact the person nearest to you:**

John Glick, Springville Road, Quarryville, 717-806-0173  
Elam Zook, Glenbrook Road, Leola, 717-682-4637  
Daniel Stoltzfus, Todd Road, Honey Brook, 610-273-2554  
Jacob King, Ridge Road, Gordonville, 717-768-0809

Door prizes will be given by Stolhaven Genetics, Triple-Hil Sires, AgriBasics (Robert Davis), Sporting Valley Feeds, and Triple AAA (Amy Bickham).

**GRAND PRIZE - \$250 CASH**      **FIRST PRIZE - \$100 CASH**  
**SECOND PRIZE - \$50 CASH**      **THIRD PRIZE - \$25 CASH**

**THERE WILL BE ONE FREE ARM SERVICE FOR EACH FARM REPRESENTED.**  
ARM SERVICE CUSTOMERS: All semen purchased in Dec. 2023-Jan. 2024 from Triple-Hil catalog will be given a 10% discount. MUST ATTEND MEETING TO RECEIVE DISCOUNT!  
DIRECT SALE CUSTOMERS: All semen ordered prior to Dec. 10th from Triple-Hil catalog will be given a 10% discount. MUST ATTEND MEETING TO RECEIVE DISCOUNT!

**Does Your Existing Manure Pit Need New Fencing?**



**FENCING FOR NEW AND EXISTING MANURE PITS**



Mention this ad and get a **10% DISCOUNT** on complete job to redo fencing, etc. On existing manure pits

We Install Primary Grade (Triple Coated) MT 40 Posts & Gates made from MT 40 Galvanized Pipe with all Clips & Anchors to install posts to Pit in Stainless Steel 2 oz. Coated Wire (nearly double the zinc for rust protection than the Typical 1.2 oz. used on most wire), Increasing the lifetime of your fence!

**A&A Fencing, LLC**  
192 North Hollander Road, Gordonville, PA 17529  
717-824-6972

20 years experience putting fencing on tanks

# Good advice, daily information and

By DIETER KRIEG  
Farmshine Editor

DAYTON, Va. — With a love for cows and plenty of home-spun drive to succeed, Matthew Showalter is following the advice he was given:

**“Get a good vet and a good nutritionist and listen to what they say.”**

Matthew, 30, has been around cows all of his life and ventured out on his own in January of 2019 with over a decade of experience already under his belt. He’s currently milking 105 grade Holsteins with two Lely A4 robots and looking forward to 2024 when full capacity will be achieved and even surpassed. “We’re projected to reach 130 cows by January-February,” he revealed.

Last week, when we visited him, the cows were averaging 99 pounds per day; first-lactation heifers had a 76.3-pound average and the average for the entire herd was 86.7 pounds. Those numbers and a whole lot more were projected on the computer screen.

While the A4 robots do the milking, the accompanying Horizon software provides a plethora of valuable data for massive management assistance. “The system is simple to operate,” Matthew affirmed. “It’s self explanatory, really. I love all of the information it gives.”

A cousin’s suggestion steered Matthew to the robots, which he purchased used. Originally, he had a new milking parlor in mind since the old parlor on the dairy had seen its best years. As it turned out, he could not have built the parlor for what it cost him to purchase the two robots, do some remodeling and have them installed. He could not be happier with the results.

“The robots are a huge labor saver and another advantage is that they offer flexibility to



Matthew Showalter, 30, has a positive attitude that just might be contagious. Dairy farming is in his blood and there really are no secrets to this dairy farmer’s success. He began by following good advice and makes it a priority to stay well informed about the cows’ daily performance. He loves the information that the computer provides.

Photos by Dieter Krieg

my schedule,” he announced.

That’s not to say that he has extra time to sit around. Even just a short visit with Matthew provides significant proof that he is a very focused manager. He routinely looks at every bit of information that the computer provides, following through without delay to keep things on track. He’s literally driven by information; but not in a way that it becomes a chore. His

quick thinking and bright eyes are evidence of his interest, energy and enthusiasm.

Robots or not, there’s always something to do on a dairy farm,” Matthew lectured. “Use the time you gain to better manage your cows.”

When asked why he chose dairying as his career, the easy and common answer was: “It’s how I was raised.” The family’s roots as farm-

ers in Virginia’s celebrated Shenandoah Valley go back to the days of the early settlers. In fact, Matthew learned after buying his farm in 2019 that the property had once been owned by his mother’s family four or five generations ago.

Farming and dairying is in Matthew’s blood. Furthermore — as is true of countless dairy farmers across the country — it’s a family thing. He’s positively motivated by that. “It’s one of the main things,” he declared. “I wouldn’t want to pack a lunch box and go to work every day. I can stay busy here with my family, and I prefer that.”

Matthew and his wife, Juanita, have two children: Alisha, 6; and Courtney, who will turn two in January. A third child, Addison, lost his life in a tragic farm accident when he was 4. “He really enjoyed the cows and was part of my dream to one day work with him,” Matthew shared.

Matthew has fond memories of his own upbringing around cows ... therefore the love for them and the livelihood they make possible. “I’ve always enjoyed cows,” he noted.

He took over managing his parents’ 60-70 cow herd when he was 18, which allowed them to spend more time growing and marketing produce. He himself is considering vegetables as a sideline business, noting, however, that if you’ve got cows, then they must always be the main focus.

When he left the home farm in 2015, Matthew followed his dream by first renting a dairy facility that had set idle for about 8 years. Once it was cleaned up and approved for milk production, he started with 40-45 cows. An off farm job with Virginia Silos filled his days and helped to pay the bills.

Matthew’s next move, about three-and-a-half years later, was to the 80-acre farm he’s currently in the process of buying. Asked what was most challenging, he answered that it was financing and he appreciates that the previous



## FLEXIBLE FINANCING FOR AG BUILDINGS

- Loans and Leases
- Tax Services
- Payroll Services
- Business Consulting
- Record-keeping
- Country Home Loans
- FarmStart for New Businesses
- Real Estate and Equipment Appraisals
- Crop Insurance

Farm Credit East offers flexible financing on loans for ag buildings used in production and marketing, including barns, shops, greenhouses, sawmills and retail facilities. Loans are also available for value-added facilities such as packing houses and processing plants, along with financing for farm residences and labor housing for hired workers.



### FARM CREDIT EAST

800.562.2235 | FARMCREDITEAST.COM



# and a positive attitude drive success

owners stepped up to help in that regard.

Of the 80 acres, 60 are tillable. He rents 10 additional acres of cropland to help supply his forage needs. Planting, harvesting and spreading manure are activities which he shares with his Dad and a couple of his cousins, who own the equipment together. The obvious result is reduced investments and increased efficiency. Matthew considers the arrangement as another example of good advice. "I think people's machinery sheds can be a big problem," he said. "We need to spend money on what makes us money."

For Matthew, that's unquestionably the dairy side. The cows. The facilities.

C & C Farm Supply of Harrisonburg, Va., a full-service dairy equipment sales & service provider specializing in milk quality, parlor technology, milking robotics and more took on Matthew's project.

"A Lely Center guy came up with the blueprint," the young dairyman stated. And then the 10-month project began. Some stalls were taken out to accommodate the robot "boxes", a pit was dug alongside them for service and observation. Automatic sort gates were installed and the feedbunk was extended.

Matthew and his father designed a new 28' x 32' building with an attractive front which houses the milk room and office.

Commenting on the transition from parlor to robots, Matthew confirms that it takes time and patience. "Until every cow has calved into this system, it's challenging," he said. "Any big

change for the cow results in a drop in milk production," he went on to say.

The good news is that once the cows have gotten used to the robots, production goes up. "We were an 80-pound herd in the parlor," Matthew noted.

Fresh cows are destined to visit the robots every four hours. In fact, explains Matthew, they are kept in a separate holding pen and fetched to be milked if they do not come on their own. Cows that are fresh up to 10 days average being milked 4.8 times per day.

The rest of the herd is "programmed" for voluntary milking every six hours. The actual average for the entire herd is 2.9 milkings per day.

Efficient production of top-quality milk is paramount for Matthew, as it is for any dairy farmer. Also important are a neat farmstead, cows on pasture and other signs that silently advertise "trust in dairy".

Rockingham County, in which the Showalter Dairy is located, has a thriving dairy community. While it can't be said that zero farms have been "lost" over the years, the overwhelming trend here is to keep going, rather than give up. For the majority — if not all — it's something of a family tradition.

Rockingham County Extension Agent Jeremy Daubert revealed that there are 160 dairy farms in the county, almost half of the count for the entire state. There are reasons for that, besides the fertile soil.



Family is arguably the No. 1 reason for many people to choose dairy farming as a business and lifestyle. Matthew Showalter is pictured with his daughter, 6-year old Alisha.



The cow being milked in this photo produces 170 pounds of milk per day; the most of all the cows in the current 105-cow herd.



Seeing the need to replace the aging milking parlor, Matthew considered building a new one but then was convinced that two robotic units were the better choice. He purchased two used Lely A4 units earlier this year and is well pleased with them.



A wealth of information is provided by the Horizon software that Matthew uses to help him make decisions. It is compatible with the SCR heat detection, rumination and activity monitoring system that Matthew had installed in 2021.

# FARMER BOY®

## 24<sup>th</sup> ANNUAL OPEN HOUSE

MYERSTOWN & MT. PLEASANT MILLS LOCATIONS

November 29<sup>th</sup> - December 1<sup>st</sup> & December 4<sup>th</sup> - 8<sup>th</sup>

7:00am - 5:30pm

### Join Us for GREAT DEALS

# UP TO 10% OFF\* Cash & Carry Purchases

\*No Additional Discounts. Discount on Regular Priced Items Only. Up to 10% Off On Cash Sales. Up to 7% Off on Credit Card Sales. Only Valid in PA Store. Some Exclusions Apply. Discount Valid on In stock Items Only. (Cash & Carry.) Some Stipulations On Payment Terms & Shipping.

Food Available at Both Locations on Friday, Dec. 8th, Until 5:30pm

Visit with 20+ Vendors Friday, Dec. 8th 9:00am - 3:30pm at the Myerstown Store!

• PA LOCATIONS •

Myerstown: 50 West Stoeber Avenue, Myerstown, PA  
Phone Number: (717) 866-7565

Mt. Pleasant Mills: 8554 PA-104, Mt. Pleasant Mills, PA  
Phone Number: (570) 539-7001

# Dietitians got the dairy and beef facts at Kreider Farms

MANHEIM, Pa. — The Pennsylvania Beef Council and American Dairy Association North East joined forces to host more than two dozen registered dietitians on the first-ever collaborative beef and dairy farm tour geared towards this highly influential group of healthcare professionals.

Retail dietitians from major grocery store chains, including

ShopRite, Weis Markets, Wegmans, The GIANT Company and Giant Food, toured Hershey's Lancaster Beef in Mount Joy and Kreider Farms in Manheim on Thursday, August 17th, where they discussed topics which highlighted the sustainable nutrition that beef and dairy products provide. The nutrition professionals also learned how producers utilize a multi-disciplinary approach for animal care, nutrition and production to deliver safe, wholesome and nutrient-rich foods that consumers can enjoy.

“We love visiting local farms and learning about the hard work that goes into feeding our customers. It was such a great experience seeing the entire process of how the beef and dairy products get to our stores. The farmers and their staff certainly do not get enough credit for how hard they work. I was in awe of how many hours they put into their days, and they likely can never take a day off because there is too much to be done. I always appreciated the work of farmers, but I will now take away a much greater appreciation after seeing it myself. Thank you to ADANE and PA Beef Council for providing this opportunity to retail RDs!” said Lyndi Mies, senior clinical regional dietitian at Weis Markets.

Tour attendees were awarded with continuing professional education credits for their participation, which included a beef and dairy nutrition challenge to reinforce key learnings. They also received nutrition resources and recipes to share with their respective audiences at the retail level.

“Hosting healthcare professionals, like retail dietitians, on an event like a farm tour allows them to see first-hand how producers safely and sustainably produce nutritious beef and therefore they can confidently recommend it for their customers and clients and enjoy it themselves,” said Beth Stark, director of channel marketing and nutrition outreach for PA Beef Council.

“Hosting health professionals like those from retail grocery chains allows them to see first-hand how dairy farmers sustainably produce milk and therefore they can confidently recommend milk and dairy foods as nutritious products for the customers and clients,” said Pennsylvania Dairy Promotion Program Chair Lolly Leshner of Way-Har Farms.

ADA North East CEO John Chrisman concluded: “Supporting grocery retailers is a big part of what we do at ADA North East. Our team works with grocers to ensure dairy cases meet cleanliness and hygiene standards, call out the nutritional benefits of dairy foods, and showcase local dairy farms.”

“Retail dietitians play a vital role in helping us educate and nourish families, so tours like these go a long way in boosting trust and sales in dairy.”

“Retail dietitians play a vital role in helping us educate and nourish families, so tours like these go a long way in boosting trust and sales in dairy.”

## Purdue gets \$1 million grant

WEST LAFAYETTE, Ind. — A team of Purdue University researchers has received a \$1 million grant from the U.S. Department of Agriculture's National Institute of Food and Agriculture to improve feed efficiency and consistency on dairy farms by using automated video analytics systems. The grant is among \$9.6 million in recent NIFA investments supporting 12 projects in animal innovation systems.

“Feed costs are the No. 1 cost for dairy farmers. In order to make improvements on feed efficiency, we have to provide feedback to farmers close to in real time,” said Jacquelyn Boerman, associate professor of animal sciences. “If we can improve the consistency of that feed and we know what individual cows are eating, we're going to manage that feed better. That has economic implications for dairy farmers.”

The dairy industry aims to become carbon neutral by 2050 via various approaches, including modifying the environment of the cow rumen and managing manure to reduce methane emissions. Boerman's team will focus on enhancing dairy cow efficiency by providing them with consistent feed and measuring how much they eat.

- Round • Square
- Rectangle • Angle
- Solid Rod • Schedule 40



**Protect your investment!**

## Triple Coated Galvanized steel tubing...

- Triple coat has the look of aluminum with the strength of steel
- Smooth to the Touch & Easy to Weld
- 50,000 psi minimums for Extra Strength
- Reduce Cost & Increase Productivity
- Just in Time Delivery

**We Cut, Swage, Drill, & More...**

**888-766-2613**

info@soncotube.com

Bristol, PA • [www.SONCOTUBE.com](http://www.SONCOTUBE.com) • Hammond, IN



**The GEA alley scraper never takes a day off**

### Efficient and gentle cleaning.

GEA's cable alley scraper systems are silent, safe for cows, and operate without disturbing the normal behavior of the herd. Robust and high-performing, equipped with adjustable steel or urethane wear blades suitable for all types of flooring.

➔ **Your Local GEA Manure Equipment Dealers**

**Cedar Crest Equipment**  
Myerstown, PA • 717-866-1888  
Mercersburg, PA • 717-660-0060  
Quarryville, PA • 717-529-2782

**Material Management Systems, Inc.**  
Meadville, PA • 814-724-5011

[GEA.com/DairyFarming](http://GEA.com/DairyFarming)

**GEA** Engineering for a better world.



**DHIA Milk Lab — Microbiology / Culture Lab — Forage Lab**  
**1592 Old Line Road, Manheim, PA 17545**  
[www.lancasterdhia.com](http://www.lancasterdhia.com) — **1-888-202-DHIA (3442)**

Planning on replacing an existing roof or constructing a new building?



**THINK LIFETIME**

**THINK METAL**

**Martins Roofing • 717-532-3460**  
260 Walnut Bottom Road • Shippensburg, PA 17257

# New York 4-H Dairy Quiz Bowl team wins again; Pa. team 5th

LOUISVILLE, Ky. — The New York 4-H Dairy Quiz Bowl team came out on top for the seventh time in the past 10 years at a contest held earlier this month at the North American International Livestock Exposition (NAILE) in Louisville. The team consisted of Nathan Foss, William Andrew and

Dayne Jantzi and was coached by Debra Grusenmeyer and Matthew Young.

A team from Wisconsin placed second in the 44th annual invitational contest, which had 14 teams from across North America competing. Teams from Vermont and Minnesota placed third and fourth, respectively.

Placing fifth was a quartet of Perry County youths, representing Pennsylvania, namely Sadie Innerst, Evan Fleischer, Julie Loy (captain) and Gavin Neff. They were coached by Irene and Jim Osborne and Harrison Boaz.

Sadie placed second in the overall contest, in a tie-breaking round with Wisconsin's Logan Harbaugh.



Seated, left to right are Nathan Foss, William Andrew and Dayne Jantzi, with coaches Deborah Grusenmeyer and Matthew Young standing.



Seated, left to right are Sadie Innerst, second high individual; Evan Fleischer and Julie Loy, captain. Standing, left to right: Gavin Neff; Irene Osborne, Jim Osborne and Harrison Boaz, coaches.

## Concrete Grooving

Do your cows a favor...  
...Keep Them on Their Feet!

What do you think girls?  
It's great traction, no more slipping for us!  
Thanks for getting this done, we'll pay for it with better production!

**Groove...**

- Alleys - down to 20" wide
- Feedlots
- Holding areas
- Return lanes
- Palpation lanes
- **Anywhere you have slick concrete!**

**Your results...**

- Better Heat Detection
- Fewer injuries
- Increased milk production

### Eli Fisher Construction

814-364-9361 • Centre Hall, PA

Keystone Concrete Products, Inc.  
477 E. Farmersville Rd.  
New Holland, Pa. 17557

(717) 355-2361 - corporate office  
(717) 355-9548 - fax  
keystoneconcreteproducts.com

Thanks for reading **FARM SHINE**

# National Farmers

**Adding New Conventional Milk in Central & Southern PA**  
Milk Checks 3 Times Monthly  
No Equity Payments – National Organization  
National Farmers - Northeast  
Join Our Growing Organization!  
241 McLean Rd, Cortland NY 13045  
844-378-4169

[www.nationalfarmers.com](http://www.nationalfarmers.com)

**NEED THAT BUNKER? CALL ASAP TO RESERVE YOUR WALLS!!!**

**Secure Cover Dealer**      **Financing Available**

**Agricultural Pre-cast Products Available:**

- T & L Shaped Precast walls 8'6", 12'6" & 16' high
- Straight Back J-Bunk (36" x 22 1/2" x 34")
- Slant Back J-Bunk (30" x 34")
- H-Bunk (26" x 15" x 60")
- Precast Concrete Box Culverts
- Cattle "Waffle Slab" Moisture cured, 8000 psi concrete New 8" thick for Heavier Equipment (Up to 12' Long, 4' x 8')
- Cattle Guards Avail. 12' & 16' Lengths



**Thanksgiving thoughts**

Despite the many issues in the world today, we have much to be thankful for this season. I am thankful for many things, including the farmers who feed us and the service men and women who protect us and protect freedom and liberty. I am thankful for our farm families, our industry, our ability to discuss and debate the issues -- even though we may disagree. Unfortunately, the latter is questionable these days with protests and threats of violence and deep divisions on major issues that cut to the core.

I offer these words spoken by President Abraham Lincoln proclaiming what is considered the first official recognition of a Day of Thanksgiving, just three months after the Victory at the Civil War Battle of Gettysburg in 1963.

*"I do therefore invite my fellow citizens in every part of the United States, ... to set apart and observe the last Thursday of November next, as a day of Thanksgiving... And I recommend to them that while offering up the ascriptions justly due to Him . . . , they do also, with humble penitence for our national perverseness and disobedience, commend to his tender care all those who have become widows, orphans, mourners or sufferers in the lamentable civil strife in which we are unavoidably engaged, and fervently implore the interposition of the Almighty Hand to heal the wounds of the nation and to restore it as soon as may be consistent with Divine purposes to the full enjoyment of peace, harmony, tranquility and Union."*

By the time you read this it will be a day or two after Thanksgiving. We hope you had a day of gratitude, good food, and warm connections with family and friends, that you were able to share memories of those lost during the year, and reflect on God's blessings in the face of life's challenges... all amid the ongoing daily routines of the farm.

**Viva Italia! Govt. bans lab meat**

Citing "serious health concerns," Italy has banned all lab-grown synthetic meat -- you know, the frankenfood being promoted by Bill Gates. Meanwhile, in the U.S., the Biden administration's FDA and USDA have fast-tracked approval of synthetic "cell-cultured" meat, including Gates's lab-grown fake-chicken.



Reuters news service reported last week that Italy's lower house of parliament joined the upper house Senate in passing the law that bans the use of laboratory-produced food and animal feed in the face of angry farmers protesting and confronting a group of lawmakers who had opposed the bill.

The law prohibits the use, sale, import and export of food and feed "from cell cultures or tissue derived from vertebrate animals." Factories breaching such rules would be fined up to 150,000 euros (\$162,700) and would run the risk of closure, while owners could lose their right to obtain public funding for up to three years.

The proposal came from the Agriculture Minister, a close aide of Prime Minister Giorgia Meloni. It is being described as an attempt by the rightest coalition to "safeguard agrarian tradition."

Opponents of the bill said it wasn't necessary because there is no lab meat being sold in Italy. How shortsighted!

Proponents of the bill are concerned about more than a safeguard of "tradition." It is truly about serious health concerns, which have been brought up at conferences this year by scientists stating the technology has not been tested for its safety.

Meanwhile, in the U.S., the FDA has given various versions of lab-grown fake-meat the GRAS (generally regarded as safe) designation.

These DNA-edited stem cells are "programmed" to continuously grow without the corresponding animal. That means no natural hormones or protective immune system, so what is being added to make these cells grow? Additionally, these cells are programmed to have no endpoint to their growth so the bioreactors of starter muscle tissue can continuously grow.

What other cells grow without an endpoint? You guessed it. Consuming these cell-cultured muscle blobs is akin to consuming a malignancy. Doesn't that sound GRAS and appetizing?

Earlier this year, Italian farmers and meat industry representatives had a food conference in New York City, and they invited my friend Lorraine Lewandrowski of Herkimer County (dairy farmer and attorney, NY Farmer on Twitter) to dine with them, cross cultures and tweet to her urban NYC followers. Her impressions were that the Italians are organized and quite proactive on this front. They are dedicated to real food, real farming, not swayed by climate-talking-billionaire-funded-bioreactor-growing-frankenfood-startups.

The Italian people and economy will be the healthier for it! Viva Italia!

**Biden and Xi agree to 'slow methane'**

Meanwhile, in the U.S., President Joe Biden and China's President Xi Jinping met at the APEX economic summit in San Francisco this week. According to news reports of their discussion, the "three big things" to come out of their meeting were:

- 1) Cooperate to curb the flow of fentanyl!
- 2) Turn on the military-to-military communication (the 'red phone'), and
- 3) Cooperate to slow the rate of methane emissions.

Guess where most of the concentrated pea protein and concentrated soy protein used in Impossible Meat and Beyond Meat and other fake-meat is manufactured -- China. Guess where the cell-cultured labs are ramping up for fake-animal-protein manufacturing -- China, Russia and Singapore.

U.S. dairy and beef cattle have a methane target on their backs, even though the contribution to total U.S. GHG emissions is less than 4% for all U.S. livestock, combined. Not to mention this methane is part of a cycle that has been recycling over tens of thousands of years -- no new warming. And cattle methane emissions are dwarfed by the methane emitted from oceans, wetlands, marshes and bogs as they are being restored.

Money clouds judgment. Money creates euphoria so that we don't ask enough questions... until it's too late. So much money is being thrown at the methane deal that it's hard to get a straight answer from anyone anymore about what we're really trying to accomplish here.

**The milk futures see-saw takes the downside**

Last week's recovery was wiped off the milk futures board this week -- and then some. Class III futures for December through February lost a full \$1.00 by Tuesday's close, compared with the previous Wednesday. Class IV lost a little less.

On the close Tues., Nov. 21, Class III futures contracts for the next 12 months averaged \$17.84/cwt, down 29 cents from the 12-month average on the previous Wednesday. The Class IV milk futures averaged \$19.49 for the 12 months, down 16 cents from a week ago.

**Spot dairy products plunge lower**

Dairy product futures on the CME retreated bigtime this week, and spot cash markets also plunged lower. This despite a Global Dairy Trade (GDT) biweekly internet auction that boasted a steady all-products index compared with two weeks ago.

The spot butter price lost another whopping 16 cents/lb this week pegged Tues., Nov. 21 at \$2.53/lb, with 8 loads trading. Grade A nonfat dry milk was pegged at \$1.1725/lb, down a nickel on the week, 1 load traded.

The spot price for cheese Wednesday was a big loser: 40-lb block Cheddar was pegged at \$1.59/lb, down 3 cents with 1 load trading; 500-lb barrel cheese was the biggest loser, cutting 20 cents off last week's price, pegged Tuesday at \$1.4950/lb with no loads trading. The dry whey price was pegged at 39 3/4 cents/lb, down 2 pennies from a week ago with 2 loads changing hands.

Meanwhile, October's milk production was tallied Monday at 0.5% below year ago. Look for our analysis in next week's Farmshine on the milk production and cattle inventory as the year is drawing to a close.

"The customer is the focus of everything we do."



**BUILDING SYSTEMS**

**Building Trust In Steel**

**(814) 276-9611**



404 Sarah Furnace Rd Imler, PA 16655

Thank You for reading **FARMSHINE**

# Time for a New Building?



**AFE Builders Provides:**

- New Dairy Facilities
- Beef Facilities
- Calf Barns
- Horse Barns
- Shops and Garages
- Barndominiums
- Timber Homes



**AFE Builders offers you expert guidance and quality workmanship, ensuring timely completion and cost efficiency.**

**Contact the team at AFE Builders Today to help you get your next project started!**

Now Servicing the East Coast

**(717) 572-1680**

**afebuilders.com**



**We take your IDEAS and bring them to LIFE**

## Special Christmas Dairy Sale

SALE HELD AT FISHER'S QUALITY DAIRY SALES  
3304 OLD PHILADELPHIA PIKE, RONKS, PA.

**FRIDAY, DEC. 8 • 10:00 A.M.**

Note sale time

**including Cream of Cedar-Crest Holsteins and Friends - 2nd Edition**

Buyers spending \$1000 receive a free 5 lb. cheese

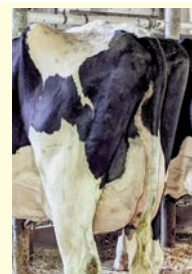
Cedar-Crest sends another group of 50 top, Reg. Holsteins in all stages of lactation, including a poppin' group of springing heifers. David's barn is overflowing again. All carry the Cedar-Crest prefix. Cedar-Crest sold 50 head last November and made many happy customers. So come and enjoy another top group of cattle! **Here is a sample of cattle selling:**

**Group #1** – Cedar-Crest Holsteins have now bred 61 EX cows (19 over 92) and 176 VG cows! They score on Dec. 1st.

- Janelle (pictured) leads their group. She's VG-85 VG-MS @ 2-5 Delta Lambda from the Airliner Joy family which features three EX dams w/ records up to 40,000. Also selling from the Joy family is a RED Addiction Sr. 2 (Joneda) sister to the sale topper last year. Four more family members sell.



Janelle



Fantastic

- Fantastic (pictured) by Cheers is just that. She'll be high VG as a two-year-old. Her EX-91 dam sold last year and made another record over 35,000.

- Luscious (Chief) and Luvlee (Excaliber) sell from the prolific "L" family that includes 3E-94 Shottle Lullaby w/ 201,370m life. 7 more sell from this family including stellar bred heifers due near Christmas: Red Moovin and Tropic.



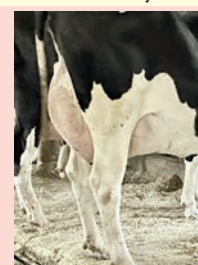
Disney-Red

- Impressive Duo: Cheyanne Jr 2 and Clementine Sr 2 Doorman full sisters x 86 Bradnick x EX-94 Atwood Cris X 94 Dundee Celeste.

- Huge future for Disney-Red (pictured), Altitude Sr 2 x 90 Addiction x 3E-93 Acme w/ 37210 x 3E-92 GMD Finley two 41,000 records.

**Group #2** – Skiles-View Holsteins.

- Two from Baracuda's family: EX Undenied (pictured) sister and Summer Jr 2 Chief from an EX Diamondback sister.



Undenied



Unix

- VG-85 VG-MS @ 2-5 Unix (pictured) x Justa-Beauty Jacot Triumph EX-94 w/29,550 4.1f.

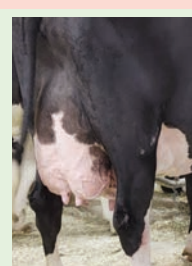
- VG-87 RED Hypnotic milking 100# x 92 Ammo x 86 Ladd Glory x 19 EX dams.

- Proven Breeder Crush son and 9-month-old Chief son x VG-86 Doc w/ 27,000 4.5f x Luck-E McGucci Afro-Red 2E-94 w/ 36630m 5.6f.

- VG-88 EX-MS Durable milking 150# and her Dempsey bred heifer due 1-30 to sexed Luster P.

**Group #3** – My-Type Holsteins.

- 2E-94 Corvette (pictured) A2A2 & 6th generation of EX-94 or higher from the Finesse family. She sells with two sisters and daughters by Dundee 2nd calf and two Sidekick fall calves.



Corvette

- EX-90 Doorman A2A2 more points ahead x Vale-O-Skene Gold Karmilla EX-94 x 2E-92 Dundee.

- Milking Yrlg. prospect: RED Latenite A2A2 due 6-12-24 x Absolute Fantasy 4E-94 w/ 213,220m 4.5 life back to Finesse.

- A pair of Ashlyn family members: 2E-92 Solomon milking 92# & due back 5-27 to Hotline x 3E-96 Ashlyns Angel and RC Unstopabull due just before the sale x 3E-95 Goldwyn x 2E-95 Aphrodite.

- 3 daughters from 3E-93 Wind Chime: VG-86 Doorman, 12-21 Goldwyn bred heifer and 6-23 Thunderstorm.

**Group #4** – Special Guest Consignments of Big-Time Pedigreed Calves and Heifers.

- Showtime 6-23 RED Warrior (pictured) and her RED Altitude dam that should be EX soon from VG-86 Hypnotic x DB Raspberry-RED EX-91 twice All-Am & Res. JC @ WDE.



Warrior

- Spring Yrlg. Prospect for '24 by Altitude-RED x 3E-94 Goldwyn w/ 39,900 4.5f x WDE Grand Champion Lavender Ruby Redrose-RED 4E-96. Lots of winners from this Blackrose family at EXPO in 2023!

- Thunderstorm Summer Yearling for '24 from the Roxys through the Golden-Oaks Atwd Charla EX-93 and Cleavage branch. Her dam is 2E-94 O'Kaliber.

- Tatoo Sr 2 prospect due 2-12 to sexed Doc x VG-87 Windbrook x back to Gold Missy! The Tatoo and her dam were HM All-PA Dam & Dau. in '22.

*Also selling many good, young cows, Reg. and grades, from overstocked herds and heifer raisers with lots of milk. Looking for that special show cow or calf with a top pedigree or just good grades with loads of milk, don't miss this sale! Free cookies and chocolate milk while supplies last.*

Sale Staff: **Matt Welk**, 717-413-7000; **Mark Welk**, 717-875-8393; **Matt Zimmerman**, 717-222-0101; **Dave Lentz**, PHA, 717-329-9202; **Cowbuyer: Aaron Ray Tompkins**, 336-363-4639.

Sale managed by: **FISHER'S QUALITY DAIRY SALES**  
**Jonas Fisher • 717-768-3297**

Auctioneer - **Dave Stoltzfus AU-005655** • Pedigrees - **John Burket 814-239-2260**

# Lancaster DHIA

New England, New Jersey, New York

from page 11

LEON NEWSWANGER	56 HO	29604	1012	909
DAVID BURKHOLDER	47 HO	28225	1179	907
LEWIS R. SAUDER	56 HO	26112	1072	832
REEDLAND FARMS	338 XX	24890	1021	813
VERNON OBERHOLTZER	92 HO	24587	1061	808
CLEARVIEW FARM	61 HO	25297	999	756
ARTHUR ZIMMERMAN	163 HO	24082	920	749
<b>HERDS WITH A RHA SCC LESS THAN 200,000</b>				
VERNON OBERHOLTZER	HO	63	92	
NEVIN SENSENIG	HO	73	53	
HARVEY SENSENIG	HO	88	60	
LEWIS R. SAUDER	HO	124	56	
LAKE COUNTRY HOLSTEINS	HO	132	78	
DAVID BURKHOLDER	HO	141	47	
REEDLAND FARMS	XX	144	338	
NORMAN BURKHOLDER	HO	144	62	
CLEARVIEW FARM	HO	167	61	

LEON NEWSWANGER	HO	180	56
NELSON SENSENIG	HO	182	50
ARTHUR ZIMMERMAN	HO	193	163

**Otsego County**

EVAN M. CHARLES	69 HO	26449	1021	859
MARVIN FISHER	56 HO	25359	872	767
MATHEW FISHER	64 HO	21978	997	688
<b>HERDS WITH A RHA SCC LESS THAN 200,000</b>				
EVAN M. CHARLES	HO	159	69	

**Schoharie County**

ERIC & TAYLOR BOGARDUS	24 HO	25146	854	793
SLATEHILL FARM	117 HO	22687	924	736

ERIC & TAYLOR BOGARDUS	33 AY	17727	665	563
<b>HERDS WITH A RHA SCC LESS THAN 200,000</b>				
ERIC & TAYLOR BOGARDUS	AY	144	33	

**Schuyler County**

JAMES HOOVER	57 XX	23636	931	756
BROOK'S EDGE DAIRY	77 HO	22847	879	725
ALLEN, THOMAS R.	54 HO	16950	675	556

**Seneca County**

KEITH MARTIN	76 HO	24159	895	777
WINDY HOLLOW FARM	166 HO	24890	980	774
CLAIR ZIMMERMAN	83 HO	24992	923	765
DELMAR & DAWN MARTIN	109 HO	21634	836	685
<b>HERDS WITH A RHA SCC LESS THAN 200,000</b>				
CLAIR ZIMMERMAN	HO	134	83	
DELMAR & DAWN MARTIN	HO	144	109	
WINDY HOLLOW FARM	HO	173	166	

**Steuben County**

PAUL & KATHIE WHITE	112 HO	28253	1206	894
<b>HERDS WITH A RHA SCC LESS THAN 200,000</b>				
PAUL & KATHIE WHITE	HO	145	112	

**Tioga County**

LAWTON JERSEY FARM	98 JE	23442	1151	832
SHIPMAN, DAVID	240 HO	20807	807	670
<b>HERDS WITH A RHA SCC LESS THAN 200,000</b>				
SHIPMAN, DAVID	HO	154	240	
ROGER FORD	XX	196	43	
LAWTON JERSEY FARM	JE	198	98	

**Tompkins County**

HOUSTON, MARLIN, JR.	156 HO	20607	823	648
<b>HERDS WITH A RHA SCC LESS THAN 200,000</b>				
LIBERTY VIEW FARMS LLC.	XX	169	48	

**Washington County**

LUNDY, WILLIAM	221 HO	26856	1008	860
CHRIS CURTIS	170 HO	24886	936	798
<b>HERDS WITH A RHA SCC LESS THAN 200,000</b>				
CHRIS CURTIS	HO	117	170	
YOUNG, JENNY	AY	131	57	
LUNDY, WILLIAM	HO	156	221	

**Wayne County**

KEVIN HUBER	60 HO	28702	1248	918
RICHARD HORNING	145 HO	26480	1041	852
DWIGHT SENSENIG	76 HO	23873	904	756
LARRY MARTIN	84 HO	24017	950	743

**Yates County**

AMMON REIFF	67 HO	26100	1071	896
MATTHEW ZEISET	58 HO	29162	1108	894
DANIEL K. MARTIN	63 HO	28193	1028	878
NATHANIEL MARTIN	43 HO	27284	1089	875
DAVID MARTIN	53 HO	27265	1115	870
CLARENCE GARMAN	51 HO	26630	1078	865
MERVIN LEE ZEISET	49 HO	26377	1069	841
DAVID HORST	48 HO	25292	1070	794
DUANE MARTIN	40 HO	25960	972	779
LEON WEAVER	59 HO	24119	972	778
SCENIC RISE DAIRY	55 HO	24100	922	769
DELMAR BURKHOLDER	59 HO	23520	950	746
JOHN BURKHOLDER	46 HO	22990	898	734
TOWNRIDGE FARMS LLC.	144 HO	22965	992	720
BRANDON HOOVER	49 HO	21860	886	714
NEIL WEAVER	41 HO	22547	847	707
VINE VALLEY FARM	270 BS	20617	850	703
MARK HOOVER	62 HO	20269	789	620
ANDREW Z. LEID	54 HO	20189	760	616
ROLLEN N'S DAIRY	71 HO	19809	773	609
MARTIN FOX	48 XX	16420	719	581
CLEASON MARTIN	34 XX	18065	748	580
PHILIP MARTIN	29 HO	15745	637	517
ZACH PIZZENTI	76 HO	16252	621	503
<b>HERDS WITH A RHA SCC LESS THAN 200,000</b>				
DAVID MARTIN	HO	51	53	
NATHANIEL MARTIN	HO	57	43	
MERVIN LEE ZEISET	HO	77	49	
JOHN BURKHOLDER	HO	86	46	
AMMON REIFF	HO	88	67	
RICHARD NOLT	JE	89	46	
DANIEL K. MARTIN	HO	91	63	
LEON WEAVER	HO	96	59	
CLARENCE GARMAN	HO	98	51	
PHILIP MARTIN	HO	100	29	
MATTHEW ZEISET	HO	100	58	
ROLLEN N'S DAIRY	HO	109	71	
SCENIC RISE DAIRY	HO	110	55	
DELMAR BURKHOLDER	HO	120	59	
CLEASON MARTIN	XX	141	34	
AARON H. KILMER	XX	154	39	
ZACH PIZZENTI	HO	163	76	
ANDREW Z. LEID	HO	184	54	
BRANDON HOOVER	HO	190	49	

**NEW JERSEY**

HOLLAND VALLEY FARM	35 HO	20271	799	646
---------------------	-------	-------	-----	-----

## Farm Insurance You Can Count On.

At Roger W. Myers Insurance Agency, we believe in providing farm insurance you can count on. That's why we often recommend Goodville Mutual. Goodville operates with the highest degree of compassion and integrity and has insured thousands of farm owners for over 30 years.

For your farm's insurance needs, contact us today and discover for yourself why so many farm owners believe *there's a lot of good in Goodville.*



**ROGER W. MYERS INSURANCE AGENCY**  
570-546-2845  
RogerMyersAgency.com  
183 EAST WATER ST • MUNCY, PA 17756



# CERTIFIED ORGANIC CATTLE WANTED

## NICHOLAS MEAT LLC

Modern Meat Processor Paying a Premium For Your Certified Organic Cattle

Purchasing on Dressed Weight and Grade Basis

Nicholas Meat LLC is an approved Certified Organic Meat Processor. We are looking to purchase all your Certified Organic Cattle. Customers can deliver cattle to the plant Monday through Friday 7 A.M. to 1:30 P.M. Nicholas Meat LLC has also established several collection points.

**Cattle can be taken to:**

- Vintage Sales Stables, Inc.**  
3451-3457 Lincoln Highway East, Paradise, PA 17562  
Every Thursday from 9 A.M. to 3 P.M.
- Weikert Buying Station**  
721 Carrolls Tract Rd., Fairfield, PA 17320  
Mondays from 9 A.M. to 4 P.M.
- New N.W. Sales Company**  
2006 Mercer-New Wilmington Rd., New Wilmington, PA 16141  
2nd and 4th Monday of each month.
- Belleville Livestock Market**  
26 Sale Barn Lane, Belleville, PA 17004  
Every Wednesday.
- R&C Calf Farms, LLC**  
13071 Emerson Rd., Applecreek, OH 44606  
Mon. -Thurs. 9 A.M. to 2 P.M. (Behind sale barn in Kidron)

**Please bring a copy of your Organic Certificate with each shipment!**

Please call the number below to inquire about these collection points or to schedule your sale of Certified Organic Cattle to Nicholas Meat, LLC.

## NICHOLAS MEAT LLC

508 East Valley Road, Loganton, PA 17747  
Please call Nicholas Meat LLC – 570-725-3511



Now Offering an Automated Manure Handling Product Line



**IntelliChain® Alley Scrapers**  
IntelliChain® II, II HD and MAX – the most optimized and efficient alley scraper systems.



**MA-12 Cross Gutter Manure Auger**  
Convey scraped waste through a concrete channel with a consistent pump feed rate.




**Tundra® Manure Pumps**  
Tundra® Pro II and LTX work in conjunction with alley scraper systems and cross gutter manure augers.


 Patz Corporation | Pound, WI | 920-897-2251 | patzcorp.com

<b>PENNSYLVANIA</b>		
Mercersburg	Cedar Crest Equipment LLC	717-660-0060
Myerstown	Cedar Crest Equipment LLC	717-866-1888
Quarryville	Cedar Crest Equipment LLC	717-529-2782
Troy	Fallbrook Fabrication	607-426-0592
<b>VIRGINIA</b>		
Harrisonburg	C&C Farmers Supply Corp.	540-433-8532
<b>NEW YORK</b>		
Collins	A.R. Timmel	716-532-2040

**Territory Sales Manager**  
Paul Kratz • 920-897-9212  
paulkratz@patzcorp.com



# Markets

## Morrison's Cove Auction

November 20, 2023

Grass	220-295
Mixed hay	180-270
Round bales	130-140
Large square bales	180

## Wolgemuth Auction

November 15, 2023

Mixed hay	175-350
Timothy	235
Grass	190-340
Straw	175-190
Orchard	180
Corn fodder	95-135

## Dewart Auction

Dewart, Pa.  
November 20, 2023

Cattle: 162	
Slaughter cows:	
PrmWht 65-75% lean	102-110
Breakers 75-80% lean	90-103
Boners 80-85% lean	80-90
Lean 85-90% lean	68-85
Feeder cattle:	
Steers:	
M/L-1-2	127-160
Heifers:	
M/L-1-2	105-155
Bulls:	
M/L-1-2	95-140
Calves: 395	
Feeder calves:	
#1 Hol bulls	360-460
#2 Hol bulls	320-370
#3 Hol bulls	150-250
Utility bulls	20-50
#1 Hol heifers	150-170

## Greencastle Livestock

Greencastle, Pa.  
November 20, 2023

Cattle: 411	
Slaughter cattle:	
Steers:	
HiCho & Prm	190-202
Choice	179-185
Select	170-176
Holstein steers:	
Select	133
Heifers:	
HiCho & Prm	192-194
Slaughter cows:	
Breakers 75-80% lean	103-112
Boners 80-85% lean	87-106
Lean 85-90% lean	71-89
Feeder cattle:	
Steers:	
M/L-1-2	117.50-172.50

Holstein steers:

L-3	130-135
Heifers:	
M/L-1-2	142.50-180
Bulls:	
M/L-1-2	120-182.50
Calves: 427	
Feeder calves:	
#1 Hol bulls	280-385
#2 Hol bulls	250-340
#3 Hol bulls	150-250
Utility bulls	20-50

## Hosking Sales

New Berlin, N.Y.  
November 20, 2023

Cattle:	
Dairy cows	.79
Bone utility	.90-1.05
Canners & cutters	.85-.95
Easy cows	.70 & down
Bulls over 1100 lbs.	1.05-1.28
Feeders:	
Dairy	.20-1.14
Bulls	1.10-1.20
Heifers	.97-1.02
Steers	1.25
Bull calves	top 4.65
Heifer calves	top 2.20

## Morrison's Cove

Martinsburg, Pa.  
November 20, 2023

Cattle: 64	
Steers:	
Good	125-166
Heifers:	
Good	115-140
Cows:	
Util/Commercial	83-90
Can/LoCut	83 & down
Feeder Cattle:	
Bulls	80-160
Heifers	75-145
Calves: 93	
Standard	10-50
Hol bulls	150-400
Hol heifers	100-180

## Wyalusing Livestock

Wyalusing, Pa.  
November 20, 2023

Cattle:	
Canners	.55-.62
Boners	.50-.60
White cows	.75-.92
Feeders:	
300-500 lbs.	.80-1.40
600-700 lbs.	.90-1.20
701-800 lbs.	1.05-1.20
Calves:	
84 lbs.	.60-3.50
92 lbs.	1.20-3.50

# CDE DAIRY MARKETS & MANAGEMENT UPDATE

All prices — NOV. 21, 2023 — except where noted

**JAYNE SEBRIGHT**  
Executive Director, CDE  
717.346.0849  
jsebright@centerfordairyexcellence.org



**A shifting milk supply:** Dairy farm families are seeing an improvement in their milk checks right now over the devastating low prices they received this summer. September's all-milk price was announced at \$21 per hundredweight, up nearly \$4 from July's low of \$17.40. October's all-milk price is expected to continue to increase, with the October Class IV price at \$21.49 per cwt., the highest this year. Unfortunately, the Class III price fell back in October, dropping \$1.55 from September to \$16.84 per cwt. Looking ahead, Class IV milk futures prices average \$19.26 per cwt for the next six months, while Class III milk futures prices average \$17.12 per cwt, based on settlement quotes from November 20.

While these prices are not the nearly record highs we received in 2022, they are a welcomed improvement after working through the very tight margins we saw in June and July. Several factors are weighing into the marketplace right now. On the supply side, U.S. milk production has been down for the last four months after six months of growth in the first half of 2023. October's milk production was down 0.5% to 18.71 billion pounds, with a 1-pound decrease in milk production per cow for the month and 42,000 fewer milking cows in the nation's herd than there were a year ago.

When you look at what is happening with our nation's milk supply right now, you'll see a steady shift from the Southwest and West to the Upper Midwest and Eastern regions. Year-over-year growth on the western side of the Mississippi was strong historically from 2016 – 2021. However, in the past year, that tide has started to change, with extreme heat and concerns over water supplies causing that region to falter. California, the largest dairy state in the U.S., saw milk production fall 2.6% in October year-over-year, while New Mexico's milk production fell 9%. Oregon's milk production was also down 4.1%, while other western states had more modest declines. Collectively, the western region of the U.S. lost 59,000 head in the past year, with Arizona the only state in that region to show a significant increase in milk production.

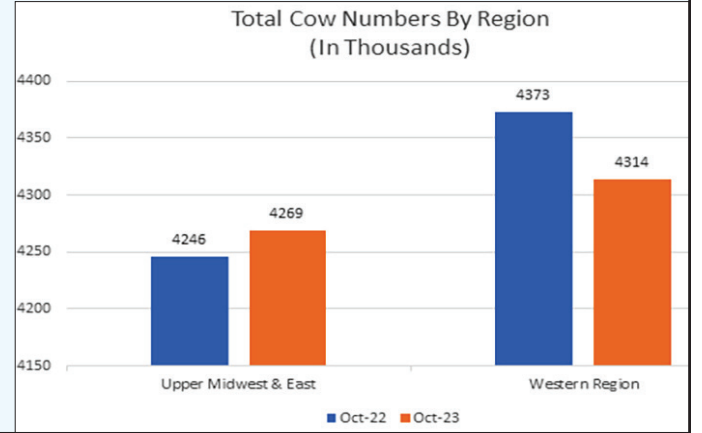
On the flipside, growth in the Central Plains/Upper Midwest into the East is strong. South Dakota showed the most growth in October, with 13,000 more cows and 6.6% more total milk production.

Prices change daily. This market information is an example for educational purposes. The market data below are compiled weekly by Farmshine, via CME & USDA reports.

Florida was also up 6.2%, although the southern state's total milk production only puts them at 22nd in terms of total milk production by state. Michigan and New York saw the most growth out of the top-8 dairy producing states, increasing 2.6 and 2.1%, respectively. Collectively, the states in the Midwest and East had 23,000 more milk cows and 1% more total milk production in October than they did a year ago.

This shift in milk production from west to east is helping to contribute to the spread we are seeing right now in the Class III and Class IV milk prices. Much of the nation's butter and powder supply is produced in the western part of the country, while much of the cheese is produced in the Upper Midwest. Class III prices are driven by cheese and whey production, while Class IV prices are driven by butter and powder production. With supplies tighter in California and surrounding areas, Class IV prices remained stronger while Class III prices have weakened through the summer and fall.

### Top 24 Milk Producing States and Year-over-Year Production Change:



## CME DAILY FUTURES & OPTIONS TRADING — NOV. 21, 2023 AT THE CLOSE

NOV-23	DEC-23	JAN-24	FEB-24	MAR-24	APR-24	MAY-24	JUN-24	JUL-24	AUG-24	SEP-24	OCT-24	TREND											
<b>CLASS III MILK FUTURES (\$/CWT) vs. wk ago: Nov23 up \$.02, Dec23-Feb24 fully \$1 lower, Mar-Jul24 dn \$.025-0.50, Aug-Oct24 firm to \$0.10 higher. 12-Month Avg. 17.84</b>																							
17.12	16.40	16.52	17.05	17.71	17.90	18.09	18.26	18.42	18.64	18.74	18.79	↓											
<b>CLASS IV MILK FUTURES (\$/CWT) vs. wk ago: Nov23 firm, Dec23-Mar24 dn \$.025-0.50, Apr-Jul24 weak-\$0.10 lower, Aug-Oct24 firm-\$0.07 higher. 12-Month Avg. 19.49</b>																							
20.60	19.04	18.65	18.87	19.03	19.29	19.49	19.53	19.69	19.81	19.94	19.97	↓											
<b>CLASS III MILK (\$/CWT) OPTIONS — PUTS — Daily Strike Price / Premium</b>																							
17.00	0.01	16.50	0.30	16.50	0.50	17.00	0.68	17.75	0.87	18.00	0.95	18.00	0.96	18.25	1.04	18.50	1.11	18.75	1.22	18.75	1.20	18.75	1.21
<b>MILK BASIS (\$/CWT) — 2017-22 PA BASIS AND AVG PA/NY/VT/OH — YOUR INDIVIDUAL BASIS WILL VARY (MAILBOX - CLASS 3)</b>																							
PA	0.60	0.79	1.17	0.62	1.53	2.29	1.82	1.58	0.99	1.03	0.95	0.79											
*AVG	0.74	1.38	0.85	1.67	2.55	2.15	1.66	1.45	1.25	1.31	1.15	0.69											
<b>DMC OFFICIAL GROSS MARGINS per cwt(USDA All-Milk, com, alfalfa &amp; ill. soybean, feed for ALL CLASSES of dairy cattle on farm) Updated with NEW prem. alfalfa feed cost</b>																							
DMC	JUL-22	AUG-22	SEP-22	OCT-22	NOV-22	DEC-22	JAN-23	FEB-23	MAR-23	APR-23	MAY-23	JUN-23	JUL-23	AUG-23	*SEP-23	TREND							
	9.92	8.08	8.62	10.71	10.89	9.76	7.94	6.19	6.08	5.84	4.83	3.65	3.52	6.46	*8.44	↑							

JUL-22	AUG-22	SEP-22	OCT-22	NOV-22	DEC-22	JAN-23	FEB-23	MAR-23	APR-23	MAY-23	JUN-23	JUL-23	AUG-23	SEP-23	*OCT-23	
<b>U.S. AVG PREMIUM ALFALFA &amp; ALFALFA/GRASS HAY 20-22% CP - Source: USDA Monthly National Dairy Comprehensive Report</b>																
312.50	308.17	290.70	300.10	289.50	296.50	266.60	297.25	277.00	290.00	292.86	244.27	254.92	243.50	238.50	*217.82	↓
<b>U.S. AVG. BRED COWS &amp; HEIFERS (3rd trimester) per head as reported by USDA Monthly National Dairy Comprehensive Report</b>																
1350	1407	1265	1310	1290	1300	1250	1352	1342	1330	1400	1559	1502	1540	1500	*1741	↑
<b>U.S. AVG. FRESH COWS per head as reported by USDA Monthly National Dairy Comprehensive Report</b>																
1571	1417	1384	1701	1526	1531	1436	1487	1493	1544	1469	1792	1615	1634	1643	*1830	↑

DEC-23	MAR-24	MAY-24	JUL-24	SEP-24	DEC-24	MAR-25	MAY-25	JUL-25	SEP-25	DEC-25	JUL-26	TREND
<b>CORN FUTURES (\$/BU)</b>												
4.694	4.874	4.976	5.060	5.074	5.124	5.226	5.272	5.264	5.100	5.076	5.244	↓
<b>SOYMEAL FUTURES (\$/TON)</b>												
460.2	443.3	430.1	420.2	417.3	412.9	406.9	399.7	400.6	399.0	394.5	392.4	↓

DEC-23	JAN-24	MAR-24	MAY-24	JUL-24	AUG-24	SEP-24	OCT-24	DEC-24	JAN-25	MAR-25	MAY-25	TREND
<b>PA MILK MARGIN &amp; IOFC-LATEST PSU VALUES - *AUG. 2023</b>												
FEED =	FEED COST (\$/CWT milk)	IOFC (\$/COW @ 75 lbs milk)	PA MILK MARGIN (\$/CWT milk)									
\$/CWT.	*AUG (estimated) *8.84↓	*8.14↑	*14.78↑									
IOFC =	PREV MO 9.16	6.18	13.05									
\$/COW	YR AGO 9.38	12.61	219.65									
<i>Covers ONLY lactating feed, based on 75 lb herd avg, Buff., NY soy price</i>												

NOV23	DEC23	JAN24	FEB24	MAR24	APR24	MAY24	11/21/23	SPOT CASH	TREND
<b>CME DAIRY CASH-SETTLED FUTURES (\$/LB) 11/21/23</b>									
NFDM	1.187	1.190	1.207	1.227	1.246	1.267	1.290	↓	1.1725↓
WHEY	0.376	0.397	0.420	0.420	0.429	0.444	0.460	Mixed	0.3975↓
BUTTER	2.949	2.530	2.458	2.465	2.475	2.480	2.482	Mixed	2.5300↓
CHEESE	1.744	1.678	1.689	1.738	1.800	1.821	1.836	↓	See Below
<b>CME SPOT CHEESE: BARRELS 1.4950 / 40 LB BLOCKS 1.5900 ↓ / ↓</b>									

CL I ADV↑	CL II↑	CL III↑	CL IV↑	ALL-MILK-U.S.	ALL-MILK-PA	WEIGHTED AVG. 4-WK	OCT. 1-28, 2023	OCT 2023					
19.75(NOV)	21.95(OCT)	16.84(OCT)	21.49(OCT)	21.00(SEP)↑	21.50(SEP)↑	PRODUCT VALUE	MAKE ALLOW NET	COMPONENTS					
						CHEESE	1.7390	0.2003	1.5387	↓	PROT	1.0468	↓
						BUTTER	3.2387	0.1715	3.0672	↔	B.FAT	3.7144	↑
						NFDM	1.1558	0.1678	0.9800	↑	N.FAT	0.9781	↑
						DRYWHEY	0.3198	0.1991	0.1207	↑	OTHER	0.1243	↑

CL I ADV↑	CL II↑	CL III↑	CL IV↑	ALL-MILK-U.S.	ALL-MILK-PA	PRODUCT VALUE	MAKE ALLOW NET	COMPONENTS					
19.75(NOV)	21.95(OCT)	16.84(OCT)	21.49(OCT)	21.00(SEP)↑	21.50(SEP)↑	CHEESE	1.7390	0.2003	1.5387	↓	PROT	1.0468	↓
						BUTTER	3.2387	0.1715	3.0672	↔	B.FAT	3.7144	↑
						NFDM	1.1558	0.1678	0.9800	↑	N.FAT	0.9781	↑
						DRYWHEY	0.3198	0.1991	0.1207	↑	OTHER	0.1243	↑

PA Auction Markets Nov. 16-21, 2023	FED HOLSTEIN STEERS (\$/CWT LIVELWEIGHT)	CURRENT Beef X	WEEK AGO	YR AGO
<b>CULL MARKET COWS (\$/CWT LIVELWEIGHT)</b>	Choice & Prime 1250-1550 lbs light test	147.00(Itd)	147.50	116.10
Premium White	Bull Calves: No. 1 & 2, 90-130 lbs	400.00	385.00	650.00
Breakers	70-85 lbs	385.00	385.00	700.00
Boners		650.00		140.00
Boners		385.00		140.00
Lean		650.00		135.00

brought to you by:

## Relief Milkers FOR HIRE ANYWHERE

Patricia Nissenbaum, 20 plus years experience, large and small herds. Dairy cows and dairy goats. Will travel anywhere, references available. Email milksmaid@dunkerton.net. Phone 319-822-7807.

Joe Cramer, has a college degree in dairy cattle production & management plus 20 years dairy experience. 419-376-8662.

David Stoner, over 30 years experience, 717-951-2540.

### PENNSYLVANIA

**Bedford County:** Milk R Us, 253 Meadow Lane, Everett, Pa 15537. Phone 814-652-2092.

**Eastern Pa.:** Brad Wright, 717-953-4570. 290 Samuels Church Rd., McClure, Pa. 17841. 15 years experience.

**Franklin & Cumberland Counties:** Kann's Milking Service. 30 years experience (references available). Contact Ryan L. Kann, 717-816-1920.

**LISTINGS ARE FREE**

Anyone wishing to have his or her name included in this service should contact Farmshine in writing, giving name, complete address, telephone number, email address and county to be listed under.

Send to:  
Relief Milker Service, Farmshine,  
342 E. Main St., Ste. 201, Leola, Pa. 17540

# Classifieds

"Say you saw it in FARM SHINE"

## 1 Services

**FARM INSURANCE:** barns, equipment, hay and grain storage, Workers' Compensation, farm stands and stores, vehicles and farm homes. N.Y., Pa. and Va. Call Alec Pandaleon at 845-242-0113.

**CUSTOM SILAGE** hauling with silage dumptruck. Southern Tier/Fingerlakes/CNY. Will travel further for quantity. Call Connor Gehl 607-427-3936. (11/24)

**AG PHOTOGRAPHER** - senior, family, natural cattle portraits. Sales, herd dispersals and ag event photography coverage and albums. Based in Lancaster, Pa. A Farmgirl's Dream Photography. 717- 824-1320.

**BALING SERVICES - CUSTOM** 3x3 and round baling, along with individual wrapping. Out of southern Lancaster, Pa. 717-826-3775.

**REPAIRING ALL KINDS,** makes and models farm machinery, specializing in discbines, pull type harvesters and corn planters. Also general welding. We also repair older tractors. Harsue Repair, New Holland, Pa. 717-355-0715.

**BOB & MILLIE'S DISCOUNT** signs. The cheapest guys in town. Free delivery on all sign orders. bobthesignman@yahoo.com. Real Estate-Construction-Banners-Yard Signs-Decals-Magnetic Signs-End of Lane Farm Signs. appletreesigns.com. 410-708-1341.

**COMPOSTECH LLC. IS A** local Honey Brook business, making and selling organic compost at \$30 per cubic yard. Call Dave at 610-441-5154 to schedule a pick up.

Also taking horse manure for free, must be dropped off.

**LOWER SCC & IMPROVE** conception. Highly effective, 35 years of time tested results and satisfied dairymen nationwide. No withholding ever feed additive, low cost. Call AG, Inc. today. 920-650-1631. www.alphageneticsinc.com

**DAIRY PRODUCER** - would you like to lower SCC and mastitis rates, provide milking training, breach the language barrier and improve parlor performance? Call Adolph Dossman at 240-286-8996.

**INNOVATIVE DAIRY** Nutrition - specializing in forage planning to maximize production and optimize herd health through advanced nutrition. To improve your profits, contact Matt at 717-729-4530

**REDUCED PRODUCTION?** Heat stress? High SCC? Scours? Proven effective solutions to your herd's health needs, no withholding. Call the Dairyman's Helper. 800-829-7512.

**CUSTOM COLLECTING** - Call for prices. 301-491-3154. Triple-Hil Sires.

**KANN'S MILKING SERVICE** Franklin & Cumberland Co. 30 years experience, references available. Ryan L. Kann, 717-816-1920.

**BARNS FULL? WITH 8+** years experience raising heifers, I am the solution to your problem. Space available now. Call today to discuss this opportunity. 717-860-8867.

**CUSTOM HEIFER RAISING.** Weaned calves to calving. 19 years experience. Modern housing, free stalls, AI breeding, TMR, monthly vet visits. Lebanon Co., Pa. 610-451-3006.

**GARDNER CUSTOM HEIFER** raising. 40 years experience. TMR in fenceline feeders with lockups, dairy veterinarian manages, adolescent to springers, competitive prices. 540-871-0246, dlggar@aol.com, gardnerheifers.com.

**CUSTOM HEIFER RAISING.** 300-400 head capacity. AI breeding, hauling available. We do not have state of the art facilities but are committed to an accelerated feeding program. Call for pricing. Reach us at 240-291-0286.

**HEIFER RAISING SERVICES** offering full health care program, excellent AI breeding program, activity monitor collars, balance ration, pasture for older heifers. Lancaster Co. 717-940-9435.

**CUSTOM HEIFER RAISING.** Good quality forages. Minerals and hay in TMR. Room for 150-200 head. Troy area. 570-220-4542.

**HEIFER BOARDING** - Sand bedded freestalls. Corn silage haylage and hay included. \$2/hd/day. 607-382-3633.

**HORSE BOARDING** available, Willow Street, Pa. area, Lanc. Co. 717-380-7612.

**ADAM'S HOOF TRIMMING.** 22 years of experience. 717-813-1358.

**MID-ATLANTIC HOOF TRIMMING** - providing farmers professional hoof care in Maryland, Virginia, Pennsylvania and surrounding states. Call Mikey Barton at 518-567-8046 today for inquiries/scheduling.

**HASTINGS HOOF TRIMMING** is looking for clients in Pa., N.Y. and Ohio. Call or text 315-283-2717 for a quote.

**CATTLE HOOF TRIMMING,** Western, Pa. Stand up chute, over 10 years in business. Looking for new clients. 814-279-7932, ask for Russell.

**TSHUDY'S HOOF TRIMMING.** Quarryville, Pa. Serving Southern Lancaster,

Chester and York counties since 2003. \$11/cow, free wraps. Hydraulic tilt table. 717-917-8715.

**STAND UP HOOF TRIMMING.** Two man trimming crew, excellent cattle flow. Serving South Central Pa. and surrounding counties. Will travel for large numbers. Call Matt Weaver at 814-793-9966.

**HOOF TRIMMING Service.** 717-755-0770.

**PHILBRICK'S HOOF TRIMMING** serving western and central Pennsylvania, western New York and eastern Ohio. 814-720-0010.

**HOOF TRIMMING** - Garrett Co., Md. Tilt table. Willing to travel distances for large groups/herds. \$10/cow. Trained at Dairyland Hoof Care, Wis. Call 301-616-2195.

**HOOF TRIMMING SERVICE** - providing quality service for large and small dairy and beef herds. \$10 per cow. Graduate of Hoof Care Institute. Stand up chute. 315-573-6742.

**MACIK HOOF TRIMMING** - Beef and dairy cattle. Hydraulic tilt table. Serving Western PA, Eastern OH, Northern WV. Phone 724-345-8501.

**PROF. HOOF TRIMMING** - RSW Farms LLC. Hydraulic table, competitive rates, serving MD/PA/NY. Contact Ryan 518-935-7704 or RSWFarms@yahoo.com.

**MIKE'S HOOF TRIMMING** - Since 1988. Hydraulic table. 814-997-9021.

**PROF. HOOF TRIMMING** - call for more info/available dates. 570-690-1017.

**SHUMAN'S HOOF CARE** - Serving dairies in Northeastern & Northcentral Penna. and the Finger Lakes region of N.Y. Call Tom, 570-418-1684.

**CORRECTIVE HOOF TRIMMING** - New Tuffy -tilt table. Cow comfort, professional work. Call Sam Beiler 717-222-6180.

**NEED YOUR COWS** clipped? Call 717-768-8345 ext 1.

**STRUGGLING WITH MICE** and rats? Try First Strike. Oregon Ag LLC. Call 717-656-0067.

**DEAD ANIMAL REMOVAL.** Call Mike at 717-855-5503.

**DEAD ANIMAL REMOVAL.** Removal of dead farm animals. 717-228-9500. M-F 8-4, Sat. 8-11 or text.

**LIVESTOCK HAULING** Local/ long distance. Pa., N.Y., Ohio, Va. 814-592-2543.

**SILO DEMOLITION.** 717-786-6063.

**HARVESTORE SILO REPAIRS,** extensions, and roof replacements. Call us at 717-786-6063.

**NEED YOUR EQUIPMENT,** building or house pressure washed? We have the equipment to do the job. Call us at 717-644-6295.

**DAIRY SERVICE TECH** - servicing all brands of dairy equipment. South central, Pa. Wes Sollenberger, 814-505-6304.

**CUSTOM COMBINING** services. Well maintained equipment. Reasonable prices. Call 315-573-6742 for more information.

**RESTORING GRANDPA'S** old tractor doesn't have to cost an arm and a leg! Full service repairs and restorations. Agriculture and industrial repairs. York Co. 717-368-1354.

**FARM MACHINERY REPAIRS,** NH small square baler parts, Discbines, Haybines, rakes, feed mixers, discs (new blades), forage harvesters and more. 607-243-5896.

**DISCBINE DOCTOR** - Repairing all makes. Buying & selling. After market cutter bar, bearings, or NH/JD/Kuhn and used parts. Call ahead 717-768-7542.

**SERVICE DONE ON ALL** brands of fence energizers and battery chargers. Call Sensenig's Electronic Repair 717-445-9905 for your repair needs.

## 3 Dairy Equipment

**1500 GALLON DAIRY** Kool tank, complete compressor

system, \$6500. Lancaster, Ky. 859-608-9745. (12/1)

**4' X 6' COW MATS. GOOD** mat for the money and easy to install. \$80 each, including hardware. Call 717-304-6684.

**USED MILK TANKS** - 375 gal. Milkeeper; 600 gal. Mueller M; 800 gal. Mueller OH; following tanks are storage only: 1500 gal. Mueller O; 800 gal. O. T. H. Homing. 717-438-3104.

**GUTTER GRATES FOR** tiestall barns. Innovative design prevents hoof injuries. Call for more information and current pricing. 717-464-6476.

## 4 Dairy Cows

**LAND O'LAKES** milk base for sale. 814-360-8842.

**4 A1A2 GUERNSEY COWS** 100% grass fed. 3 are Reg., 3 are 1st lactation, 1 2nd lactation. Call for prices. 717-529-1233, ext. 1.

**BUYING AND SELLING** dairy herds, heifers and service bulls. Aaron Coons, 717-816-4118.

**JUST FRESH, 1ST LACTATION** Reg. Holstein cows. Good quality, well grown animals. 3-4 generally avail. each month. 570-297-5118.

## 5 Heifers & Calves

**REX-PP RED & WHITE** Reg., polled heifer, due in December. Out of VG-89 Ammo, out of an 88 pt., out of 9 gens EX back to Roxy. \$2300. 240-469-9712.

**REG. RED & WHITE 2 YEAR** old springer heifer. Due end of November. 440-293-7955. (11/24)

## 6 Dairy Bulls

**REG. HOLSTEIN BULL,** Burket-Falls Fitzy, 4/11/21, very nice heifer calves. Also, 1 year old angus bull, very nice, calm. Contact me at 570-960-2344 for more information. (1/12)

**B&W AND R&W POLLED** homozygous Holsteins, A2A2. Some genomically

## BRUBACKER'S QUALITY DAIRY SALES

10 BROWN ROAD, SHIPPENSBURG, PA

Thurs., Dec. 14 @ 10 A.M.  
Special Christmas Dairy Cow & Heifer Sale

- ★ Spend \$1,000.00 and get \$50.00 Gift Certificate for Sunny Ridge Markets! Consign the top cow and get a free ham!! ★
- ★ We are expecting a great selection of good, young, fresh, dairy cows with top udders! Many on DHIA. A.I. sired and several Registered. Out of local, overstocked, freestall and tiestall set ups.
- ★ 10 Freestall parlor cows, all fresh in the last 60 days, w/ smashing udders and lots of milk!! On DHIA, more info at sale.
- ★ NICE GROUP OF CLOSE SPRINGING HEIFERS, WITH MANY A.I. SIRE AND BRED!!! ALSO SELLING OPENS AND SHORTBREDS.
- ★ 6-8 BREEDING AGE BULLS OUT OF GREAT COW FAMILIES!!!

**NOTE: Is your barn full? There is high demand for Top Quality, fresh cows and heifers of all sizes! Call early to consign for free advertising!**

All cattle vet checked and vaccinated. Trucking available.

Can't make the sale? You can still participate at Cowbuyer.com!

Call Katie Schultz for assistance, 717-543-7883.

Manager/Auctioneers  
Jason Brubacker Lic. AU5608  
717-729-0173

Darryl Jones Lic. AU5194  
717-226-0776



Sale Barn  
Ivan Brubacker  
717-414-6657

Pedigrees  
Art Kling

A big Thank you to all buyers and consignors of the past year!

We hope you have a blessed Christmas and a happy and prosperous new year!

## Clover Patch Cornucopia

11-29-23 ONLINE Jersey Auction  
12-1PM ET | kreegerdairy.com | Millersburg, OH



300 Jerseys Sell - 75 Fresh & Preg Cows, 225 Bred & Open Heifers  
RHA 20480 5.1 1050 3.7 760 | Genomic & A2 Tested - #11 AJCA gJPI Herd  
Most a2 | AI Sired | Registered | DHIA | Complete Herd Health & Vaccinations

Bred Right - Raised Right - The Productive Kind!  
Catalog, Videos, & Bidding at www.kreegerdairy.com



Chad Kreeger 517-294-3484  
Dave Bennett 989-286-7244  
Paul Warner 517-231-8427

Alan & Sharon Kozak  
Millersburg, OH  
330-231-7474 330-763-1084

tested also. Lebanon Co., Pa. Con-Ger Farms. 717-821-1454.

**WANTED -** Reg. Jersey bull, 12-15 mos. old. 856-478-2942.

**REG. HOLSTEIN BULLS** for sale. Ar-Joy Farms, Cochranville, Pa. 610-637-7423.

**HOLSTEIN BULLS** ready for free stalls and younger. High genomic tested bulls from contract matings and high type cow families. 610-932-6062. Call between 8:00-8:30 a.m.

**BULLS FOR SALE & LEASE** - Reg. Holsteins, any age out of dams with records to 30,000M, 1200F. Stump Acres. York Co. Call 717-792-3216.

## 7 Semen, Embryos

**HELSEL-HILL HAS** expanded. Call or text Keith Helsel for No Bull sires, Blondin sires, Resolution-Red, Furnace Hill Zas Endure, and more. 814-515-5455.

**91HO5821 MARTIN-DALE** Jonah Joseph AAA 426. Sire stack is one of the best in the Holstein industry. Jonah x Mr America x Adolph x Leader x Aerostar. Dam of Joseph Josephine 3E, 91 pts. Just finished her record as a nine year old. 26,772 milk, 4.8 butterfat, 3.7 protein. Use this sire to improve rump, feet and legs and overall strength. Have questions, call Martin-Dale Holsteins 717-445-6548. Need semen call Stolhaven Genetics 717-672-1838.

**CUSTOM COLLECTING -** WE custom collect your bull at our facility. Semen is processed with high quality standards at very competitive rates. We also offer short-term housing options during collection. Triple-Hil Sires 855-955-2100.

**DONEGAL-CREEK BAXTER** Pedro-ET, reg # 139932533. He is EX-94 AAA (4352). From 5 EX dams - 94, 90, 91, 91 & 95. Dam is 94 pt. Outside daughter, still in herd at 10 yrs. old & looks half her age. Sire stack is Baxter, Outside, Rudolph, Conquest, Starbuck, Citation R, Elevation. Very well balanced bull siring the right kind. Strength

with dairyness. High productive life, low SCC, high conception. Early daughters are milking great & look better than their dams. Priced at \$14 for 20 units or more. Joe Wivell 717-471-5260.

## 9 Equipment & Machinery

**ANTIQUE SULKY PLOWS** - Two bottom two-way plows. One Chattanooga, a Syracuse Chilled and a John Deere Model #1342. Call Earl at 607-865-9191.

**SELF-PROPELLED** forage harvesters and heads available. Claas, John Deere and New Holland. Visit [www.cvfequipment.com](http://www.cvfequipment.com) or call 717-400-7917 if looking for a particular model.

**NEW HOLLAND BR7060** Silage Special baler. Low bale count, has knives and rotor. Twine and net wrap. Really nice baler. Other equipment also. 724-912-2277. (11/24)

**RISSLER 1 YARD** self-unloading skid loader bucket with 8" unload auger. Call 717-463-9731.

**FOR RENT: E RISSLER 330** trailer TMR mixer, \$30/day; IH Rissler 510 TMR cart, \$10/day. Delivery avail. Myerstown, Pa. 484-793-2179.

**ROOFERS BUGGY-RENT** for \$125/day or \$500/week. Lancaster Co., Pa. Call 717-808-4155.

## 10 Feeds

**1ST, 2ND & 4TH ALFALFA** tested, 3x4x8' Chinook dried straw. Delivered or FOB. 610-767-2409, heidelhol-lowfarm.com.

**BUYING DAMAGED GRAIN.** Trucking is available. Call 717-575-5197.

**CERTIFIED ORGANIC KELP** meal. Redmond minerals. Dealers available in select areas. Hess Farm Supply. 717-354-9492.

**FASTRACK** - Improve milk production, increase feed utilization and improve herd health with Fastrack direct fed microbials. Contact Karl at 740-504-2859 or email [klbss@columbus.rr.com](mailto:klbss@columbus.rr.com).

## 11 Hay

**ALFALFA BALEAGE**, 4x4 wrapped round bales, \$60 each. Also, small square bales alfalfa or grass, various prices. Richard Trinca, 814-349-8010. (12/29)

**HIGH QUALITY 1ST & 2ND** cutting grass hay, 3x3x7 bales, low potassium. #1 hay, tested. Lebanon Co., Pa. Con-Ger Farms. 717-821-1454.

**CERTIFIED ORGANIC** mixed grass and clover hay. Call from 7a.m.-4 p.m. 717-463-9731, leave message.

**ROUND BALES OR LARGE** squares. Delivered by ton loads. Coons Farms. 717-816-4118.

**HAYBUSTERS** - Dairy and beef quality alfalfa, low K hay and straw. Large and small squares. Call Mark at

800-371-7928, or visit [www.haybusters.com](http://www.haybusters.com).

## 12 Straw & Bedding

**SMALL SQUARES STRAW**, \$5/bale. 717-598-0563.

**CHOPPED STRAW** in 3x3x6 bales. Good for bedding or TMR mixers. Available now. Lebanon Co., Pa. Con-Ger Farms. 717-821-1454.

**HIGH QUALITY SAWDUST** available for delivery. Great sawdust for dairy and beef cattle. Call 301-334-6212 for delivery range, pricing and availability.

**USE BALED SHAVING** in your dairy barn. You'll love this very fine pine bedding. \$5.50/ 40 lb. bag. 610-273-3602.

**HAY OR STRAW**-any type or quality. Call 717-253-6049 for pricing.

## 14 Tractors

**JD 4440 130 HP POWER** shift. Clean tractor, runs excellent. 7000 original hours. 724-912-2277. (11/24)

## 15 Vehicles & Trailers

**TRAILER PARTS, TOWING** accessories, trailer hitches, and cushion hitches. UPS to your door. Weaver Distributing. Call us at 1-800-Weaver-D. Save!

## 16 Fencing

**TIMELESS FENCING** - The post is the insulator. Versatile design is self-insulating and easy to install for sheep, goats, cattle & horses. Allegheny Meadows. 814-285-1541.

## 17 Silos

**USED A.O. SMITH** model 1250 Slurry Pump with agitation nozzle and load out line. 717-463-9731.

**SILO DEMOLITION.** Contact Beiler Silos. Call 570-745-3574.

**HARVESTORE SILO ROOFS**, affordable white or stainless. Solve spoilage. Sheet replacement, silo demolition. Parts and repairs on Harvestore and stave silos. 717-517-2080.

**HARVESTORE SILO REPAIRS**, also demolition and removal. Used replacement blue or white silo roofs, door frames, doors, lids, breather bags. Installation available. 717-768-0452.

**I BUY USED SLURRY-STORES.** 315-404-6721 or 315-495-6506.

**LB Manufacturing LLC**  
Hoof Vet Care Chutes - Cattle Chutes  
Squeeze Chutes - Headgates - Milking Parlor - Bale Movers

*Powder Coated or Galvanized  
The choice is yours!*

**HVC12 Hoof & Vet Care Chute**  
Comfort for the animal and easy use for the operator during trimming, breeding and other vet work or when you have a lame animal that needs taken care of immediately.

**SC2023 Squeeze Chute** NEW!  
Increase animal control for varying sizes of animals being processed.  
Create a "V" or "tub effect" with the independent function of a TOP and BOTTOM squeeze to better limit animal mobility.

**ECC12 Cattle Chute**  
Get control of your animals more easily and safely with a built for tough environments Cattle Chute. No more trying to corral hard to control livestock!

**ECC22 Cattle Chute**  
Chute is our single side gate model.

**HT300S Bale Mover w/HTR300 Rack Kit - Square**  
HT250R (2,500 lb. Capacity) - Round  
HT400S (4,000 lb. Capacity) - Square  
SSL251 1-Prong Bucket Attachment  
SSL253 3-Prong Bucket Attachment (Slide onto bucket edge and tighten chain.)

Quickie & 3PT Hitch Attachment Options  
32", 38", 43", 48" Heavy-Duty Prong Lengths  
John Deere 640 Attachment - Kit Fits HT300S and HT400S  
Round and Square Bale Movers

Choose the Headgate to fit your operation.

**AHG2011 Automatic Headgate**  
Automatically latches and secures the animal.

**MHG2023 Manual Headgate**  
Great for working with varying size animals, horn widths etc.  
Spring loaded latch design allows the gates to be manually closed to fit the size of animal.

**Automatic Headgate Options:**  
• AHG050 Nosebar Kit  
• AHG075 Stop Kit

Move the handle until you have the desired width!  
←24" Maximum Opening

NEW!

**LS96 Step-Up Milking Parlor**  
Design has a smooth operation and automatic close and latch that makes milking more efficient.  
With the durable design and quality finish you can count on reliability and longevity.  
Supports all milking systems with equipment racks and conveniently adjusts to accommodate any milking unit.  
The LS96 Milking Parlor is an excellent choice no matter the number of head you're milking.

(Optional Reduced Headlock Width Available) for Smaller Animals

**Single or Double 2, 4, 6 and 8 Stall Configurations**

**Manufactured for Function and Durability**

834 Lambert Rd. • Narvon, PA 17555  
Ph: (717) 445-4458

# HOLIDAY BEEF ROUND-UP SALE

SALE HELD AT OUR FACILITY - NEW BERLIN, NY  
Directions: Hosking Sales LLC, 6096 NYS Rt. 8, 30 miles South of Utica & 6 miles North of New Berlin, N.Y.

**Saturday, December 2 • 12:00 P.M. EST**

Featuring **Oakfield Corners** - Fullblood Wagyu Production Sale. Selling 17 females, 12 bulls - All from their Elite Donor cows sold in 2021 Production Sale! Simply impressive \* Great Genetics \* Great Condition and a great opportunity! Most dual Registered in both American & Australian Wagyu Assoc.

### A FEW FEATURES:

- Female sired by TBRF Trent Bridge N346 ET - AA7, WBI \$217, SRI \$184, FTII \$161, F1TI \$124. Dam 803G - AA-7 Outstanding Hikokura maternal line. Dam's maternal sire 56T comes from Bar R program in the northwest. 11 progeny sell: 7 females, 4 males.
- Male sired by TBRF Trent Bridge N346T ET - WBI \$200, SRI \$181, FTI \$148, F1TI \$120. Dam: 822G VA-7. Double linebred Michifuku. Concentration of a classic. 6 progeny sell: 2 females, 4 males.
- Also featuring **Starucca Farm Certified Organic Wagyu Herd**. This herd consists of 8 full-blood Wagyu bulls (ET calves), 25 F1 cows been w/full-blood bull, 12 - (2022) F1 feeders, 15- F2 (2023) feeder calves, majority steers - all weaned. This herd is on a regular Vaccination program.
- Kulp Genetics Sell** - ESF bred full-blood Wagyu cow, group of Registered Red Simmental - full-bloods & purebreds - Polled, horned, bred cows & bred heifers.
- Ball Farm** sends a load of Fancy Angus feeders - 500# to 700# - all vaccinated.
- Werbela Farm** has a load of F1 feeders.
- Several other groups consisting of Registered White Park & Registered Angus, and Angus and Hereford feeders.

We will be accepting all beef breeds for this sale - Brood cows, cow/calf pairs, feeders. Call today to get into advertising your group. We will be accepting cattle Thursday & Friday or by appointment for this sale - we have plenty of quality hay. \*Note that Oakfield Corners, Starucca Farm, Kulp Farm and a few others will be sold by the head.

Wagyu Pedigrees - Grant Whitmer 801-259-9358

View and bid online in real-time at [cowbuyer.com](http://cowbuyer.com). Must be pre-approved. Aaron Ray Tompkins 336-363-4639

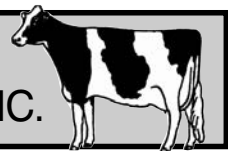


SALE MANAGED BY:  
**HOSKING SALES LLC**

LIKE US ON FACEBOOK TO GET UPDATES.  
Tom & Brenda Hosking and Family  
6071 State Hwy. 8, New Berlin, NY 13411  
Phone: Tom 607-972-1770 | Brenda 607-972-1771 | Dan 607-972-8773  
[www.hoskingsales.com](http://www.hoskingsales.com) • Like us on facebook

Free ice cream

**NEW HOLLAND SALES STABLES, INC.**



Free ice cream

Located 12 Miles East of Lancaster, PA. Just Off Rt. 23, New Holland

# DAIRY COW & HEIFER SALE

## WEDNESDAY, NOV. 29<sup>TH</sup> • 10:30 A.M.

Mature fresh cows milking over 100 lbs. and with low SCC are in demand.

All sizes of quality Holstein heifers both open and bred are wanted.

Consignors: Please send all info with truckers for the catalog. For more information, contact dairy reps: Aaron Martin, 717-445-4825 (home); Bill Hough, 973-224-0204 (cell).

Thank you - N.H.S.S.

Sale Managed By  
**New Holland Sales Stables, Inc.**  
Barn 717-354-4341 Fax 717-355-0706 • David Kolb, Mgr. 61L

**BEILER SILOS - SILO PARTS**, sales and service. New and used silos. Shotcrete relining. Foundation repair with Shotcrete. Tear down and rebuild. Silo doors made to order. 20 years experience. Serving Lycoming and surrounding Co. Jersey Shore, Pa. 570-745-3574.

**SILO DOORS**, galvanized steps and latches, poly door panels cut to size for all types of silos. Quality products are always a good investment. Meadow Springs Farm, Gordonville, Pa. Sales brochures and quotes call J. Elmer 717-768-3337 ext. 1.

**RE-BUILT SILOS**, New or used, relines, parts, repairs. SR Silos 717-527-4103.

**S & S SILO SERVICE** - We erect silos, repair silos with shotcrete, repair concrete walls, stone walls, and foundations with shotcrete. Serving the shotcrete and silo industry for 25 years. 610-273-3993.

**MANUFACTURERS** of silo doors and hardware. Double thick tongue and groove cedar poly and plywood doors. Hardware is powder coated. Agri-Door. Call 717-949-2034.

**19 Real Estate**

**20 ACRE FARM FOR SALE** in Chambersburg, Pa. Du-

plex home with 6 bedrooms, 3 bath. Bank barn with 56 freestalls, trench silo, completely fenced for livestock. 240-291-3019. (1/12)

**NORTHERN PA.** year round home with spacial property. Gorgeous mountain views, near State Gamelands and developed bicycle trail. Sits high and dry. 717-856-2024.

**THE GET-R-DONE REALTOR.** Rodney Rice, 717-729-9501. 50 years serving farmers selling, buying, auctioning. Landfarmrec-JAK Real Estate. 717-753-5510.

**TO BUY/SELL REAL ESTATE** in Pa. call Thomas Hershey at 610-209-7096. Hershey Farm Agency, Inc., HersheyAuctionLLC.com. 800-880-3831.

**BEILER-CAMPBELL** Realtors and Auction Services, Farm and Land Division. Are you looking to purchase or sell a property in Pa. or Md. Call Chris Taylor, office mgr., 888-786-8715 for an auctioneer or realtor.ctaylorfarms.com.

**20 Wanted**

**QUALITY DAIRY HERDS**, springers, open, bred and fresh heifers. 570-504-4443. (1/26)

**ROTARY TYPE SELF-PROPELLED** tiling machine;

used manure screw press; small older/cheap pull camper (like the Scotty's); person that fabricates stainless steel. For more information, call Sherman Allen 814-671-9947, cell/text, works 24/7, has voicemail.

**BUYING HARVESTORE** silos & Slurrystores. Call 717-517-2080.

**ISSUES OF HOLSTEIN** World, Jersey, Brown Swiss, etc. (all other dairy cattle breeds) magazines, sale catalogs and sire directories. 716-255-5625.

**I AM STILL LOOKING FOR** used books and publications about dairy farming, printed early to late 20th century. Interested in all farming related topics. Paying cash. Phone Owen Backus, 608-479-0811.

**I BUY TRUCKER HAT** collections. 215-896-5609.

**PREMIUM PA FARM SHOW BOOKS.** Years needed 1923, 26, 28, 31, 33, 34, 50 and 52. Contact C. Sherman Allen, 11367 St Hwy 285, Conneaut Lake, Pa. 16316, 814-671-9947.

**21 Opportunities Wanted**

**SEMI-RETIRED SINGLE** man seeks work on any type family farm, with housing or in exchange for. Prefer South Central Pa. but will consider other areas. 717-816-9693. (11/24)

**YOUNG FARMER** looking for a dairy farm to rent, ideally a rent to own situation in Pa. or Md. 717-824-1320.

**22 Help Wanted**

**TEAM MEMBERS** wanted - offering positions in service/installation. Experience in dairy equipment service is great but we can train as well. Great opportunity for motivated team player. Vehicle provided, based in Western Pa. Serious inquires only to Dennis 724-834-3162 or gds1581@comcast.net. (12/8)

**FEEDER/GENERAL LABOR** help needed on 600 cow dairy. Equipment experience preferred. Valid drivers license required. Possible housing available. Contact Kyle at 717-644-7879. Halifax, Pa. (1/26)

**23 Pets**

**OUT OF RESPECT FOR** animal welfare, "Pets or Dogs Wanted" will not be accepted as classified ads. We will continue to accept household pet "For Sale" ads. Please take care when purchasing, selling or giving away a pet, keeping the animal's well-being in mind.

**24 Seeds**

**4 1/2 TOTES OF BARLEY** seed. Cleaned and treated. \$9. 610-587-3784. (11/24)

**ALFALFA, GRASS MIXES**, oats and sorghum. Hefty brand and Augusta seed corn. Jacobsen GT soybeans. Leabrook Ag, call us at 717-898-9576.

**NEED SEED OATS?** We can obtain almost any variety. Also publish quarterly oat marketing newsletter. \$12/year. J.C. Goss, Box 312, Hurley, MO 65675, 417-708-7860.

**KING'S AGRISEEDS**, feeding your farm's future through high energy forages, and soil building cover crops. Lancaster, Pa. 717-687-6224, info@kingsagri.com, www.KingsAgriSeeds.com.

**CORN SEED. PRICING** starting at \$129/bag (before discounts). De Dell Seeds, the leaders in Non-GMO corn. 519-264-CORN.

**ALFALFA, CORN, SOY-BEANS** and more! Call us for all of your crop needs. Growmark FS-Eighty Four. 724-222-4303, www.growmarkfs.com.

**TRY THE NEW WINNER 2015** World Forage Analysis Superbowl - Alforex Hi-Gest 360 Alfalfa, cutting edge digestibility. Hess Farm Supply 717-354-9492.

**SEED CORN** - Partners brand, Mid-Atlantic, Prairie Hybrids. Lots of customer satisfaction. Dairyland hybrid alfalfa's quality yield digestibility. Oregon AG, 717-656-0067.

**HUBNER SEEDS** - Alfalfa, Corn, Soybeans, call Merle Stoltzfus. 717-224-0700.

**APPLY AGROWSIL TODAY** Quick and long lasting PH increase, increased yields, soil nutrient release, disease and stress tolerance, and drought tolerance. 1-800-850-0527.

**25 Miscellaneous**

**FREE: SPECIAL EDITION** titled Small Ruminant Research, 2007, from the Int'l Goat Assn., regarding goat and sheep milk. Honorary editor-in-chief: Dr. G.F.W. Haenlein. 717-656-8050.

**STOP FLIES. GREAT** products. Fly parasite plans. Cedar solar traps (the best). Zapper that just keeps zapping. www.dairyflyparasites.com. 888-771-3276. Useful Farm Products.

**LOOKING TO GET RID** of insects? Buy bluebird or tree swallow houses. Plus more. 717-529-2326, ext. 1.

**CLEANING OUT YOUR** attic? We'll take any magazines, newspaper, books, etc. for old man to shred for horse bedding. Call now. 717-529-2326, ext. 1.

**SEE FARMING IN N.Y.** through the eyes of an 11 year old. Visit Youtube and search "4th Gen Dairy Farmer" for videos. Call 716-474-1705 for info.

**HORSE, DONKEY AND** calf blankets. Reasonably priced. Dealers welcome. Call 717-361-4474.

**LIGHT UP YOUR BARN** with custom made clear poly carbon doors. Also custom manufacturing and repair. Jonas King, 3451 Sunnyside Rd., Manheim, Pa. 17545. 717-361-8853, ext. 4.

**POLY SILO DOORS** - Steel horse hitches; pine shavings; pine bedding pellets; Meadow Springs Farm, Gordonville, Pa. 717-768-3337, ext. 1.

**PAINTED MILK CANS** - farm scenes \$200 or have one custom painted with cows, horses or any family pet. Carroll County, Md. 410-259-1276.

**OLD AERIAL PHOTOS** of your farm or home dating back to 1963. Nathan Lewis 888-402-6901 or vintageaerial.com.

**27 Livestock**

**ANGUS BEEF, READY FOR** slaughter. 570-488-6596.

FINE GROUND *Wood Bedding*

Dry, Absorbent BEDDING For Sale

14 yd, 30 yd, and 110 yd loads  
Call for Pricing

Buy in bulk and save!

**BEILER INDUSTRIES** 717-768-7667

**NELSON & SONS CONCRETE GROOVING**

Womelsdorf, Pa. 610-589-1030  
Serving PA & Surrounding States

Save Cows, Save Your Profit Margins

www.NelsonandSonsConcreteGrooving.com

**Replacement Silo Doors**

Many Kinds In Stock

- Marietta
- Fickes
- Madison
- Terre Hill
- Lancaster
- Ribstone

Silo Door Hardware

- Butterfly Hinges
- Latches
- Steps
- Ladder

Silo Doors Made To Order  
Bring Pattern of Old Door

**Willow Road Silo Doors**

Daniel Beiler  
624 Willow Road  
Lancaster, PA 17601  
717-394-1004

Dealer Inquiries Welcome

We Ship Parts

**ALL PLASTIC CONVEYORS AVAILABLE**  
Good for Under Silo Unloaders Or Any Wet Place, In 18", 24" & 30"  
Also Available: Standard Wooden Conveyors And Feeders  
In Business Since 1965  
717-336-2244  
**RISSLER CONVEYORS, LLC**

**Zimmermans**

Glasslined Storage  
Oakland Mills, PA  
36 Yrs. Experience • Silos & Tanks  
717-463-9731  
www.silosandtanks.com

Pre-Owned Slurrystores® and Harvestores® in Inventory - Ready to be built

**COMPARE OUR PRICES & QUALITY**

**FUSION** TANKS & SILOS  
**AISTOR** Stainless Steel Engineered Roofs  
**Zabel Equipment** Hydraulic Manure Pumps  
**DRYHILL** Manure Pumps

**afs** automatic Hammermills  
**E. RISSLER MFG.** Spiro Mixers  
**Quality Parts, Inc.** Harvestore® Aftermarket Parts  
**Challenger** Slurrypump HOT-DIP GALVANIZED

Rebuilt Harvestore® Unloaders In Stock - installed with a 2 year warranty  
**WE SERVICE WHAT WE SELL**

**SERVICE DEPOT**

Alvin Eberly Harrisonburg, Va. 540-820-0818	Norwain Acres Orrville, Ohio 330-621-1276	Zimmermans Oakland Mills, Pa. 717-463-9731
---	---	--

Zimmermans is not affiliated with CST Industries, Inc.

**SOLLENBERGER SILOS**

5778 Sunset Pike  
Chambersburg, PA 17202

Poured Concrete Silos for Farm and Industry Since 1908

For information call:  
**Ken Mansfield**  
717-503-8909  
www.sollenbergersilos.com

**SOYBEAN ROASTING ON YOUR FARM**

- Full-fat roasted soybeans for maximum feeding value
- High-energy, bypass protein and palatability
- Toxic enzymes and molds destroyed
- Custom roasting in MD, DE, PA & Southern NJ

**HORST GRAIN ROASTING**  
Chester Co., PA  
**(610) 869-8834**

**Precast Systems, LLC**  
Producing concrete since 1923

**FEED BUNKS  
BUNKER SILOS  
CATTLE GUARDS**

NCPA certified plant  
Installed on site  
717-369-3773  
www.precastsystemsllc.com  
5877 Bullitt Rd. Greencastle, PA 17225

WHOLE COTTONSEED • CORN • 48% SOYBEAN MEAL • ROASTED SOYBEANS • CANOLA MEAL • LINSEED MEAL

**TRIPLE • M • FARMS**

Custom Feed Mfg.

WE MIX FEED ACCORDING TO CUSTOMER AND NUTRITIONIST FORMULAS

Also Available:  
**BULK COMMODITIES**

Call Us At:  
**(717) 272-3225**

MINERALS NON-GMO

• SOY PLUS • AminoIc • BLOOD MEAL • BEET PULP • FAT PEAK •

# HAUSA invites nominations for annual awards

BRATTLEBORO, Vt. — Outstanding Holstein breeders and dairy industry leaders are recognized each year with Holstein Association USA's annual awards. These include the prestigious Distinguished Young Holstein Breeder, Distinguished Leadership, and Elite Breeder recognitions.

"A highlight of every National Holstein Convention is recognizing our deserving award recipients for their contributions to the Holstein breed, Holstein Association USA, and the greater dairy community," says Holstein Association USA CEO John Meyer. "We look forward to continuing to add to the high-caliber list of award recipients and encourage you to nominate people you feel are deserving."

Holstein enthusiasts are invited to submit nominations for the Elite Breeder and Distinguished Leadership awards. Applications for the Elite Breeder and Distinguished Leadership awards are considered for three years after initial submission. Current Holstein breeders between the ages of 21 and 40 are encouraged to apply for the Distinguished Young Holstein Breeder award.

### About the awards:

- The Elite Breeder Award honors a living Holstein Association USA member, family, partnership, or corporation who has bred outstanding animals and thereby made a notable contribution to the advancement of U.S. Registered Holsteins.

- The Distinguished Leadership Award is given to an individual who has provided outstanding and unselfish leadership that has contributed to the improvement of Holstein Association USA and/or the dairy industry.

- The Distinguished Young Holstein Breeder Award recognizes significant accomplishments of young Registered Holstein® breeders ages 21 to 40. Submissions can be made for individuals, a couple, or business partners. The winning applicant will receive travel and lodging expenses (for up to two people) to National Holstein Convention, complimentary tickets to the Convention banquet, and a \$2000 cash award.

Award applications are available on the Holstein Association USA website at [www.holsteinusa.com/awards/individuals](http://www.holsteinusa.com/awards/individuals)

Nomination applications must be postmarked by January 31, 2024.

# Premier Select Sires offers scholarship opportunities

TUNKHANNOCK, Pa.—Premier Select Sires will award up to \$20,000 to students within the Premier territory through the 2024 Premier Future Ag Leaders Scholarship Program. Two exemplary students will receive \$2500 scholarships through either the Johnny Daniel Memorial Scholarship or the Wayne Dudley Scholarship. Several other students will receive scholarships of \$750-\$1000 in value.

Scholarship application forms are now available under the "News" tab of [www.premierselectsires.com](http://www.premierselectsires.com), by calling (570) 836-3168, or by emailing [office@premierselect.com](mailto:office@premierselect.com). Completed scholarship applications are due January 31, 2024.

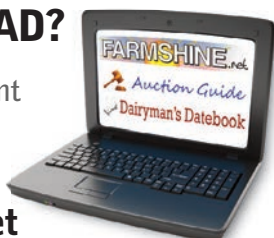
Eligible students include high school seniors through college seniors presently enrolled or planning to enroll in an undergraduate agriculture-related major. The student or his/her parent or guardian must reside in the Premier membership area and must be an active Premier customer in good standing. Previous scholarship winners remain eligible during subsequent award years; however, a student can only receive a \$2500 scholarship once in his/her school career.

The Premier Future Ag Leaders Scholarship Program provides financial support to eligible college undergraduates in agricultural majors. The program provides additional return to the cooperative's member-owners by supporting the next generation of young people desiring to study and work in the agriculture industry. The Premier Select Sires, Inc. board of directors has made a commitment to providing money to support this scholarship program on an ongoing annual basis.

## LOOKING AHEAD?

Find auction and event listings to fill your calendar online:

[www.farmshine.net](http://www.farmshine.net)



# BARGAINS YOU CAN'T BEAT!

**FARMSHINE**  
COVER FARMERS

We invite you to wish a Merry Christmas to your customers and friends in this special issue!

December 8 is our  
**Christmas Greetings special issue**

Convey your appreciation to your customers through this holiday issue!  
Your ad must be received before 10:00 a.m. on Tuesday, December 5.

Contact us today to be included in this special issue!

**Ashley Denlinger** ashley@farmshine.net 717-940-7750  
**Missy Johnson** farmshine@verizon.net 484-336-0588  
**Tammy Krieg** tammy@farmshine.net 717-656-8050

General advertising requests: [ads@farmshine.net](mailto:ads@farmshine.net)

## DISCOUNT DAYS December 4-16

Refreshments and Ice Cream

Sale Hours

Monday to Friday 7 A.M. - 5 P.M.  
Saturday 7 A.M. - 12 Noon

**CASH & CARRY**  
**10% DISCOUNT ON MOST ITEMS**  
if all charge accounts are paid.  
8% discount off card purchases.

**Daniel's Farm Store LLC**  
324 Glenbrook Road, Leola, PA 17540  
717-656-6982 • Mon.-Fri. 7-6, Sat. 7-12

## ATTENTION DAIRY FARMERS

We Need Good Used Tanks • 100-8,000 gal. - Call Us

- 15 **SOLD NJ** RH
- 180 Milkeeper
- 200 Delaval
- 210 Sunset A
- 300 Delaval
- 300 Sunset
- 400 Mojonnier
- 400 Mueller M
- 415 Sunset
- 500 Mojonnier
- 545 Sunset
- 600 Delaval
- 600 Mojonnier
- 600 Mueller M
- 600 **SOLD NJ** OH
- 600 Mueller OH
- 625 Sunset
- 700 Mueller M
- 735 Sunset
- 800 Delaval
- 800 Mojonnier
- 800 Mueller OH
- 1000 Mueller OH
- 1000 Storage
- 1250 Gal. Storage
- 135 **SOLD PA** OE
- 1350 Mueller OE
- 1500 Gal. Storage
- 1500 Mueller OH
- 2000 Delaval
- 200 **SOLD NY** OE
- 2000 Mueller OE
- 2000 Mueller OH
- 3000 Surge
- 4000 Mueller OH

Tube-coolers  
HEAT EXCHANGERS  
300-6000 Gal. Storage Tanks  
Installation, Sales & Service  
**SHENK'S**

505 E. Woods Drive, Lititz, PA 17543 • Sales 717-626-1151

**PolyDome Bulk Bins**

PolyDome Bulk Bins are the perfect choice for handling high moisture corn, soybeans, and other granular materials. They are made of high density polyethylene which will never rust or corrode. PolyDome Bulk Bins will always remain clean and attractive. 0.9 ton to 8.5 ton capacity

4.5 Ton 6.5 Ton 8.5 Ton

**Ulti-Mat All Rubber Cow Mattress Installation**  
Continuous Cow-Comfort – THE ONLY All Rubber Mattress that recovers to original shape after cow movement.

**Superior Continuous Roll Rubber Flooring Available!**  
Up to 14.5' wide & 150' long.  
All NEW Virgin Rubber

We are now making repairs to any kind of mattresses!

**Zartman Farms Cow Comfort Systems, Inc.**  
820 Hilltop Rd., Ephrata, PA 17522 • 717-733-1050  
Northeast U.S. Distributor of Poly Dome Equipment • Wholesale & Retail  
[zartmanfarms@dejazzd.com](http://zartmanfarms@dejazzd.com) • [www.zartmanfarms.com](http://www.zartmanfarms.com)

## Keeping Cows Clean Clean Cows Are Enjoyable to Milk



PAPER + GYPSUM Reduces Somatic Cell Count • Absorbs Moisture for Drier Cows

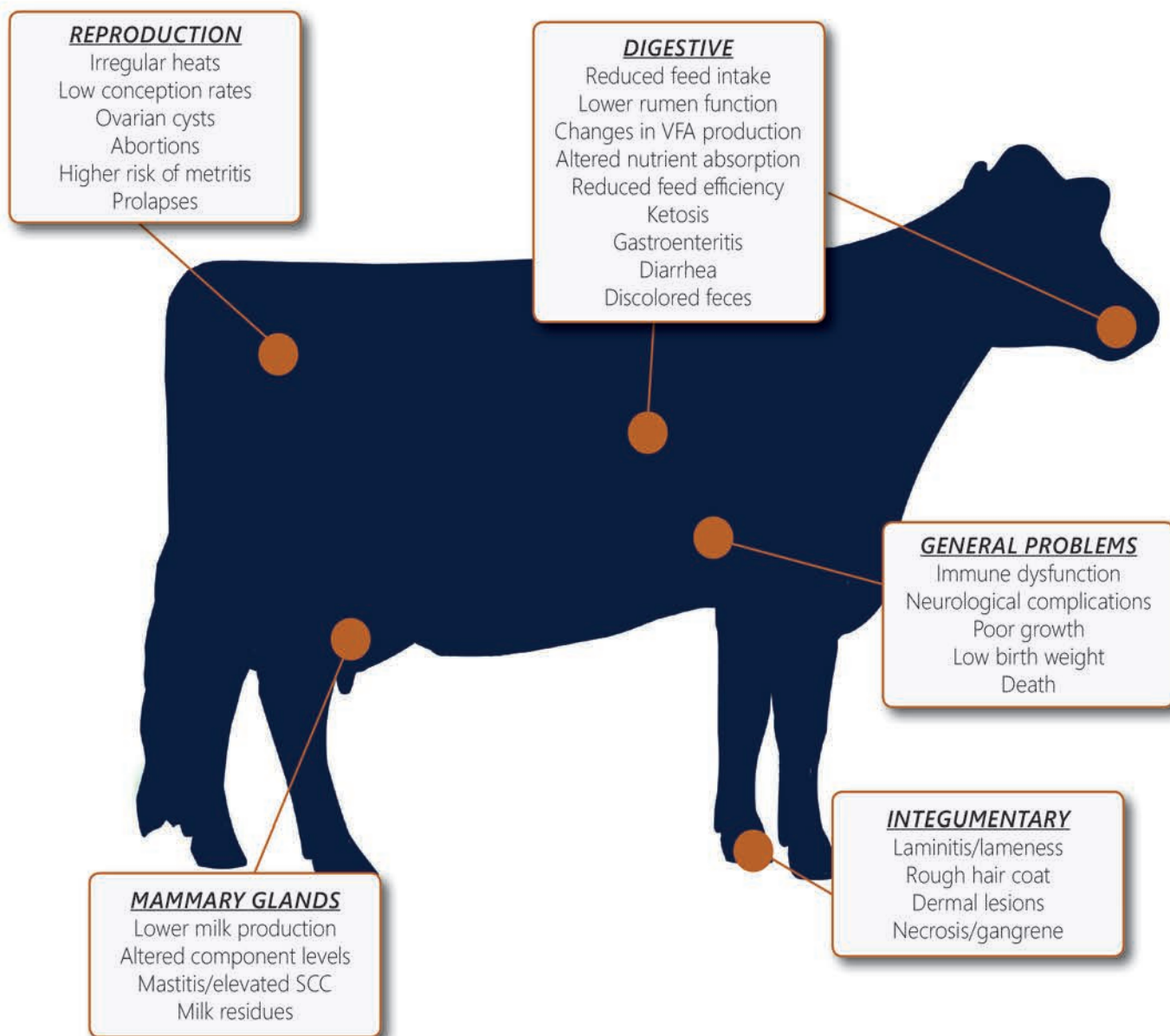
Call today for cleaner cows!  
**717-335-0379**

Located in Denver, PA • [www.usagypsum.com](http://www.usagypsum.com)



# MYCOTOXINS IN YOUR FEED?

There are between 300 and 400 compounds now recognized as mycotoxins that could affect your feeds. Mycotoxins may lead to health-related issues for your livestock, reducing production and profitability on your farm.



AKMC is Agri-King's latest nutritional supplement to help livestock get the most from nutritionally-challenging feeds.



<p><b>Southeast PA</b> Regional Manager: Larry Wenger Leola, PA (717) 371-6226</p> <p>Kirkwood, PA Les Hershey (717) 989-1808</p> <p>Manheim, PA Steve Kauffman (717) 940-4474</p> <p>Manheim, PA Brent Neely (717) 371-7391</p> <p>Parkesburg, PA Kurt Hershey (717) 201-9488</p>	<p><b>Lancaster Area PA</b> Regional Manager: Chad Martin Brownstown, PA (717) 314-2460</p> <p>Felton, PA Mike Kosmicki (717) 495-6289</p> <p>Lebanon, PA Noah Gesford (717) 805-4075</p> <p>Lititz, PA Scott Forbes (717) 572-6182</p>	<p><b>Central/Western PA</b> Regional Manager: Dan Ingle Tyrone, PA (814) 935-8610</p> <p>Centre Hall, PA Keith Hershey (814) 571-8795</p> <p>Kittanning, PA Matt Smith (724) 525-0334</p> <p>Millmont, PA Ken Heimbach (570) 847-9150</p> <p>Watsonstown, PA Jim Ulmer (570) 490-4166</p>	<p>Winfield, PA Keith McCool (570) 847-8645</p> <p><b>South Central PA</b> Hollsopple, PA Nathan Spory (814) 341-9134</p> <p>Chambersburg, PA Brian Horst (717) 360-0483</p> <p>Shippensburg, PA Ed Okuley (717) 816-6082</p>	<p><b>Area-wide</b> Tyrone, PA Dave Russell (814) 935-2640</p> <p>Watsonstown, PA Don Sanders (570) 713-4393</p> <p><b>PA Warehouse</b> Lititz, PA (717) 581-1558</p>
--	---	--	---	---



"CAPTURING THE NUTRITIONAL VALUE IN FEEDS IS THE KEY TO PROFIT."