

ARE YOU IN?

In FARMSHINE, that is



Now with affordable color on every page and with the targeted audience you want.

To be in, please call one of our sales representatives today.

Advertising Dep't
717-656-8050
ads@farmshine.net

Missy Johnson
484-336-0588
farmshine@verizon.net

Ashley Denlinger
717-940-7750
ashley@farmshine.net

Merry Christmas

FARM SHINE

We rise every week to cover farmers and agribusinesses



Farmshine • Volume 45, Number 16 • \$20 one year

Mailed the day before →

December 15, 2023

House passes Whole Milk for Healthy Kids 330-99!

*Education Chair Virginia Foxx: 'Let's end the war on milk. Pass the bill!'
Ag Chair G.T. Thompson praised as champion who doesn't give up*

By SHERRY BUNTING
Special for Farmshine

WASHINGTON -- Wednesday was a big day for dairy farmers and schoolchildren! After clearing the House Rules Committee Mon., Dec. 11, the Whole Milk for Healthy Kids Act, H.R. 1147, passed overwhelmingly in the U.S. House of Representatives.

The strong bipartisan 330 to 99 vote moves the choice of whole milk closer to school cafeterias across the nation with momentum for the next stop: the U.S. Senate, where S. 1957 has 11 bipartisan sponsors from 9 states – and more are needed.

“Students across the nation deserve school lunches that are both enjoyable and nutritious, and this legislation achieves these goals,” said Whole Milk for Healthy Kids Act champion Glenn ‘G.T.’ Thompson (R-PA-15), Chairman of the House Agriculture Committee and senior member of the Education and Workforce Committee as he testified before the Rules Committee Monday.

“Milk is an essential building block for a well-rounded and balanced diet, offering 13 essential nutrients and numerous health benefits. However, outdated and out-of-touch federal regulations have imposed restrictions ... Students are not able to access any of the milk’s essential nutrients if they won’t drink the milk being served to them. As we have seen over the last decade, there has been a steady decline in school milk consumption. This bill does not mandate anything. It gives schools, parents, and students the option of whole milk,” said Thompson.

Education Committee Chairwoman Virginia Foxx (R-NC-5) was blunt on the House floor: “Whole milk isn’t just a beverage; it’s a vital source of nutrients essential for chil-

dren’s growth. Denying access to its calcium, vitamin D, and protein threatens to inhibit their development. To the anti-milk advocates, I have one thing to ask of you: What do you have against milk? Let’s end this war on milk. Pass the bill!”

And they did. Resoundingly, the People’s House sent a strong message to the opposition that hung their hats on the flawed Dietary Guidelines for Americans (DGAs) as the end-all, be-all.

Education Committee Ranking Member Bobby Scott (D-VA-3rd) re-litigated his argument that was previously defeated in bipartisan Committee passage of H.R. 1147 in June. He kept referring to the DGAs. He insisted skim milk is the same as whole milk, nutritionally, but disregarded the roles of milkfat in key vitamin absorption and flavor to keep those nutrients from going down the drain.

ALLOWING WHOLE MILK IN SCHOOL LUNCH PROGRAM
Next: Votes on Biden Impeachment Inquiry

U.S. HOUSE

ON PASSAGE
H.R. 1147

| | YEA | NAY | PRES | NOV |
|-------------|-----|-----|------|-----|
| REPUBLICAN | 218 | 1 | | 2 |
| DEMOCRATIC | 112 | 98 | | 3 |
| INDEPENDENT | | | | |
| TOTALS | 330 | 99 | | 5 |

TIME REMAINING 0:00

C-SPAN

The Whole Milk for Healthy Kids Act passed overwhelmingly with 75% of the full House of Representatives approving H.R. 1147: 330 members (218 Republicans and 112 Democrats) voted yes, while 99 members (1 Republican and 98 Democrats) voted no, with 5 members not voting.
Screen captured from CSPAN livestream

removing whole milk. Part of the urgency here is the significant impact that has had on the health of our youths,” he said.

Thompson cited the case study analysis of annual body mass index (BMI) data aggregated by Christine Ebersole RN, BSN, CSN, a school nurse from Martinsburg, Pennsylvania. She shared her data on 7th to 12th graders in a 97 Milk / Grassroots Pennsylvania Dairy Advisory Committee education session in Washington in June 2023 and in a State Senate hearing in Harrisburg in 2021.

Her data showed the percentage of students in the overweight and obese categories, combined, grew from 39% in 2008 to 52% in 2021. This mirrors national trends demonstrating the anti-milk-fat approach has not helped and may have harmed. The trends in fact have worsened ever since DGAs were created

to infiltrate institutional feeding programs.

According to the latest National Survey of Children’s Health at the CDC website, the percentage of 10- to 17-year-olds with BMI in the obese category, alone, increased nationally from 15.4% in 2006 to 19.7% in 2018. In 1970 to 1980, it was 5%. This doubled eight years after the DGAs were born to 10% in 1988, then rose to 15.4% by 2006 after six years of USDA school lunch saturated fat caps were implemented, then stabilized at just over 15% from 2008 to 2012, then grew to 19.7% by 2018 – six years into the USDA ban on whole milk in schools.

The big milestone for whole milk in schools comes on the 5-year anniversary of Berks County, Pennsylvania dairyman Nelson Troutman placing his first painted roundbale “Drink Whole Milk (virtually) 97% Fat Free” in a pasture by a crossroads, which led to

turn to page 5

PERIODICAL • DO NOT DELAY

| | |
|---------------------------------|------|
| About your subscription | 2 |
| Alan Guebert | 18 |
| Award nominations, please ... | 3, 7 |
| Classified advertising | 20 |
| Convention invitation (PHA) ... | 12 |

| | |
|----------------------------|------|
| DHIA reports | 8-11 |
| Editorials | 4 |
| Guernsey bull proofs | 16 |
| Market Moos | 17 |
| Obituary, Ken Main | 15 |

THE WEEKLY DAIRY FARM FAMILY MAGAZINE

"Farmshine is a breath of fresh air."

Sherry Bunting's honest portrayals of the facts are much appreciated." S.S., Pennsylvania



It's time. Don't wait.
Send in your subscription request today and take a deep breath of dairy news.



Two Years \$38 • One Year \$20

Name: _____
 Address: _____
 Town: _____ State: _____ Zip: _____
 Phone or e-mail: _____ New / Renewal (Circle one)

Mail with payment to FARMSHINE, 342 E. Main St., Ste. 201, Leola, PA 17540

ARE YOU PAID UP?

Subscriptions and renewals appreciated

Dear Reader:

Compared to just two years ago (2021), postage for periodicals such as Farmshine has now increased by 28 percent. Frankly, this is an increase that threatens our survival. Once again — as we did last year at this time — we need to remind readers to renew their subscriptions.

And, of course, new subscribers are always welcome. As thousands of readers have discovered for themselves, Farmshine is a source of information that you will not see in other newspapers or magazines. We tell it like it is!

A recent note from Lynne M. in California is typical: "Thank you for the work that you do reporting on all the important dairy and farm issues!"

Farmshine's current subscription rate is \$20 for one year, which comes to only 39 cents per week. A slightly better deal is offered if you subscribe for two years at a time: \$38.

Whether you're a new subscriber or are up for renewal, please use the handy order form at the top of this page to keep Farmshine coming to your mailbox.

We thank you for your consideration and support.

Maryland ag gala reservations due

ANNAPOLIS, Md. — The 54th annual Taste of Maryland Agriculture gala will be held on Thursday, Feb. 1, at Live! Casino & Hotel Maryland at Arundel Mills in Hanover, Md.

Tickets for the event are \$100 person if ordered before January 12; individual ticket prices are \$130 after January 12. To order tickets online, go to www.mdagcouncil.com.

Sponsored by the Maryland Agriculture Council Inc., more than 800 people are expected to attend the premier event where agriculture education grants will be awarded, and Governor Wes Moore is expected to introduce the state's Agricultural Hall of Fame honoree.

For more information, contact Executive Director Susan Summers at 240-446-3601 or ssummers@comcast.net

Tidings of Comfort and Joy!

May the True Gift of Christmas light the path in the New Year.



Merry Christmas and Season's Greetings from our families to yours! We thank you for sharing your stories in 2023 and look forward to serving you in 2024 as we continue celebrating 25 years of service!

The amazing dairy cow connects us in this industry we are blessed to be part of. It's all about the cow. Her comfort is our passion since 1998! We are here for you with the tools for any size dairy and milking environment, naturally helping your cows start fresh to reach their genetic potential. As generations continue to achieve excellence, quality counts. Thank you for making Udder Comfort™ the industry leader!

Here's to our next 25 years and our shared commitment to the amazing dairy cow. Stay up to date in 2024 through our Comfort Matters Enews, where current and new subscribers are automatically entered in periodic 2024 free gallon drawings. If you are not already a subscriber, scan this Enews code to sign up, and look for additional opportunities at upcoming 2024 trade shows. Come see us! — The Comfort Team



- Keystone Farm Show, York, PA, Jan. 9-11
- New York Farm Show, Syracuse, NY, Feb. 22-24
- Central Plains Dairy Expo, Sioux Falls, SD, Mar. 19-21
- WPS Farm Show, Oshkosh, WI, Mar. 26-28

UDDER COMFORT™
Quality Udders Make Quality Milk

1.888.773.7153
uddercomfort.com
uddercomfort.blog



Her Comfort is Our Passion!

Helping reach their potential since 1998!



USPS 509450 ISSN 0745-7553

Published by Farmshine LLC
 in Lancaster County, Pennsylvania.

1-YR. SUBSCRIPTION - \$20.00
INTERNATIONAL SUBSCRIPTION - \$40.00
 Published every Friday except the week of Christmas

Dieter Krieg, Editor & Publisher
 Melissa Johnson, Advertising Representative
 Ashley Denlinger, Advertising Representative
 Sue McCloskey, Secretary
 Douglas Denlinger, Production Manager

Send subscriptions, news & advertising to:
 FARMSHINE
 342 E. Main St., Suite 201, Leola, Pa. 17540
 Phone 717-656-8050 | Fax 717-656-8188
news@farmshine.net | ads@farmshine.net

Periodicals postage paid at Lancaster, PA
 and at additional mailing offices.

POSTMASTER: Send Address Corrections To:
 FARMSHINE
 342 E. Main St., Suite 201
 Leola, Pa. 17540

Copyright © 2023. Printed in USA. All rights reserved. No part of this publication may be reproduced in any form without prior written permission by the publisher. Information gathered herein is from resources considered reliable. Accuracy, however, cannot be guaranteed. All printed material is intended for your information and reading enjoyment and is not meant to disrespect or harm any group or individuals. Ads appearing in this paper are not to be considered as an endorsement by Farmshine for products or services offered.

Farmshine's staff reserves the right to refuse any and all material, including articles and advertisements that they determine do not fit the objectives of Farmshine.

Pa. Holstein Association invites award nominations

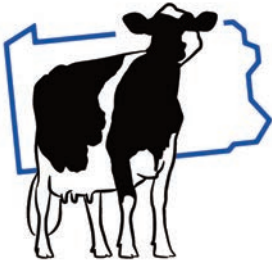
STATE COLLEGE, Pa. — The Pennsylvania Holstein Association is inviting nominations for four prestigious awards, all of which are due at the PHA office by January 1, 2024. The awards are:

- **Hall of Fame**

The Hall of Fame award recognizing an individual or couple for their achievements and contributions to the Holstein industry as well as involvement and leadership in other agricultural and community activities. This could be an individual(s) that is an accomplished Registered Holstein breeder or has significantly contributed in leadership and involvement to the Pennsylvania Holstein Association, or both.

- **Distinguished Young Holstein Breeder**

This award is open to any Pennsylvania and National Holstein Association member



**Pennsylvania
Holstein
Association**

between the ages of 21-40 (as of January 1, 2024) who owns or has management responsibilities for a herd of cows such as a herdsman, partner, or member of an LLC. The herd must be on official DHIA test.

The award is to recognize accomplishments of Young Holstein Breeders and to encourage them to establish goals that will aid

in their management decisions to help achieve a profitable dairy operation.

The winning entry from Pennsylvania will receive a complimentary room at the 2024 State Convention and Convention Banquet tickets. They will also have their entry sent on for national competition.

- **Pioneer Memorial Award**

This award is to posthumously recognize an individual, not already in the Pennsylvania Holstein Association Hall of Fame, for their contributions to the Holstein industry at the local, state and national levels. This award will be selected by the Hall of Fame Committee and be awarded to no more than one person per year.

Nominations can be made on behalf of former Pennsylvania Holstein members who worked for the improvement of the Holstein

breed and its members in Pennsylvania.

- **Distinguished Supporter**

This award recognize an individual or company (not a current dairy farmer/producer) who through their work has supported and enhanced the work and goals of the Pennsylvania Holstein Association. If an individual is nominated, they must be living at the time of the nomination.

For more information about any of these awards, please contact the Pennsylvania Holstein Association office. Applications should be completed and forwarded to:

Pennsylvania Holstein Association
839 Benner Pike
State College, PA 16801
Phone (814) 234-0364
e-mail: contact@paholsteins.com
Website: www.paholsteins.com

Research into *Early Onset Muscle Weakness Syndrome* intensifies

BRATTLEBORO, Vt. — Holstein Association USA has continued to monitor information related to Early Onset Muscle Weakness Syndrome (MW) over the past several months. The development of the haplotype calls for Muscle Weakness (HMW) has been a top priority for Holstein Association USA, along with colleagues at the Council on Dairy Cattle Breeding (CDCB), USDA-AGIL and the National Association of Animal Breeders (NAAB).

During the Fall 2023 Holstein Association USA Board meeting in Chicago, the Holstein Association USA Board of Directors approved staff's recommendations for further action regarding MW.

HAUSA made the haplotype results avail-

able in conjunction with the official genetic evaluation release on December 5, 2023. This information can be found in the same place as other haplotype information, including the free Family Tree Search, within Red Book Plus Online, on genomic reports, and within Enlight.

Results for HMW will be reported as 0 (free), 1 (carrier), 2 (homozygous affected), 3 (probable carrier), or 4 (probable homozygous) on evaluations. CDCB predicts a number of Holstein genotypes in the database will receive a status of 3 or 4 for HMW, due to the inability to confirm the presence of the mutated haplotype through available pedigree information.

Next steps

HAUSA staff will analyze the HMW haplotypes released in December and collect comments from Holstein breeders and scientific researchers. Following a satisfactory review outcome, Holstein Association USA plans to add MW to the list of officially recognized undesirable genetic conditions in February 2024.

Additional resources and information on MW can be found on the Holstein Association USA web site. A regularly updated list of bulls with an NAAB code with a direct test result on file can be found at https://www.holsteinusa.com/lists/early_onset_muscle_weakness.html.

ness.html.

The best tool available for discovering and understanding new genetic conditions is farmer reporting. Therefore, breeders performing gene tests on animals are asked to forward those results to Holstein Association USA, at labresults@holstein.com

Farmers who have calves born with abnormal features or health issues that are suspected to be caused by genetic problems are asked to complete the Abnormality Report Form available at https://www.holsteinusa.com/pdf/forms_apps/abnormality_report.pdf and email it to LabResults@holstein.com or contact the Genetic Services department at 800-952-5200.

Reminder: There will be no **FARMSHINE** published on December 29, 2023 to allow our staff to enjoy their families at Christmas. We will resume our weekly schedule beginning January 5, 2024. Thanks for reading!

Prepare Now for Winter! Durable Ag Curtains



Complete Curtain Systems with all the components you'll need

- High Quality 16 oz. Vinyl Curtain Material
- Galvanized Bird Wire
- Keder Tubing & Drive Motors



Available with: Manual Gear Drives or Fully Automated to Control Your Curtains 24/7



**SHADY LANE
Curtains LLC**

Bird-in-Hand, PA
(717) 690-2003

**CALL
NOW**

to Get In Our
Schedule



"The Nation's Industry Leader in Ag Curtains"

Farmshine Editorials

By Dieter Krieg
Farmshine Editor



“The greatest tyrannies are always perpetuated in the name of the noblest of causes.”

— Thomas Paine

Let's serve whole milk and ban hogwash instead

Hey! This is America! And this is beyond pathetic!

1. Our government dictates that whole milk cannot be served in school to our children.
2. Eleven months ago, when Representative Antonio Delgado (D-NY) asked USDA Secretary Tom Vilsack to explain the restriction, he declared that whole milk is unaffordable. Our schools can't bear the expense. This doesn't pass as an excuse. But it does qualify as an outrageous lie.

Schools all across America had no problem buying and serving whole milk prior to 2010 when Villain Vilsack struck it off the menu, telling yet another lie, that whole milk is bad for one's health.

3. The government that boasts (lies) that the United States of America is the richest country on Earth can't afford to buy whole milk for their young? Absurd!

4. For as long as I can remember, America was the “can do” country. Apparently,

that has ended, if we are to believe Vilsack.

But that's just it. We can't believe a word of what the USDA Secretary says about the most nearly perfect food in the world: Whole milk.

Then again, he's only doing his job, which is part of an evil-empire-style operation run out of its global headquarters at 405 East 45th Street, New York, N.Y. and a “vacation home” in Davos, Switzerland. As we write this, these liars, thieves and hyp-

ocrites (also frequently referred to as “elites”) are finishing up their corrupt, 2-week-long “business meeting” in Dubai.

Incidentally, just a tiny, tiny fraction of the money that was wasted there by kings, sultans and princes, as well as tyrants, tycoons, and fools, would easily pay for the whole milk needed in schools, which Vilsack claims our formerly rich and strong country can no longer afford.

Hogwash!

Deck the halls, but please don't forget the dairy delights!

By CHARLOTTE QUICK
Susquehanna County Alternate Dairy Princess

Tis the season for merriment, but amidst the twinkling lights and tinsel, there's a silent observer in your midst – the Elf on the Shelf! This tiny red toy isn't just watching your behavior; he's got his beady little eyes on your dairy intake. Move over, candy-canes; it's all about the dairy dreams for the Elf this holiday season!

But don't fear! There are many ways to enjoy some delicious dairy, without setting off the elf on the shelf! Here are some fun ways of how to infuse your holiday spread

with the magic of dairy:

Eggnog! Elevate your festive libations with a hearty splash of real milk. It's not just a drink; it's a celebration of calcium and vitamin D in every sip, and topped with delicious whipped cream. If eggnog is a little too rich for you, create a **cheeseboard extravaganza!**

Pair a variety of delicious cheeses with your favorite crackers and fruits for a delicious symphony of flavors. Or, take it back to a simple classic: **chocolate milk with a pep-**

There are many ways to enjoy some delicious dairy, says Susquehanna County Alternate Dairy Princess Charlotte Quick.



permint twist! Just fill up a tall glass with chocolate milk, stir with a peppermint candy cane, and enjoy!

Now, why is the Elf so worried with your dairy intake? Well, it's not just about meeting Santa's health standards; it's about nourishing your body! Dairy is a nutrient powerhouse, boasting calcium for strong bones, vitamin D for optimal calcium absorption, and protein for muscle strength. So, this holiday season, let's show Santa how your holiday spirit extends beyond decorations and sweets – it's about caring for your body and embracing the gift of health.

And when the Elf on the Shelf reports back to Santa, wouldn't it be wonderful to be recognized as part of the dairy-devoted, brigade? That would be awesome! Happy holidays, and here's to a season of festive indulgence and healthful choices!

BEST BIRTHDAY FOREVER!

You might be asking what's all that got to do with Christmas? Isn't Christmas about lots of colorful lights & beautiful decorations? Or what about a jolly overweight man with a long white beard wearing a red fur lined coat who has a flying sleigh powered by flying reindeer? Isn't Christmas about another big family feast then football games after? Plus we help the poor much. All those are good things. However REAL Christmas is celebrating the birth of GOD'S perfect gift offered to all: the LORD JESUS CHRIST. He was alive forever, yet he was sent to be born to take on a fleshy BODY just like you & I. As GOD the creator, he even created us & everything in the beginning “For by him were all things created. That are in HEAVEN & that are in the earth. Colossians 1:16. Amazing! He was born to die for all sin... as he was one who never broke GOD'S LAW or the Ten Commandments. Ever lied? HE OFFERS you complete forgiveness. Will you repent & ask Him for it?

HIS BIRTH: Christmas. In humble Bethlehem stable in Israel. Celebrated worldwide.

HIS DEATH: Good Friday. HIS death on the cross for all humanity's sins.

HIS RESURRECTION: EASTER from the tombs he arose 3 days later, ALIVE from the DEAD. Is celebrated around the world.

Many wealthy and famous people have come and gone in history. Yet, JESUS as GOD THE SON had the best birthday ever, for every person. “For GOD so loved the World HE gave HIS only begotten SON that whoever believeth in HIM should not perish but have everlasting life.” John 3:16 Is HE (JESUS CHRIST) yours only by faith alone?

A JOYOUS CHRISTMAS & NEW YEAR to all our greatly appreciated customer family everywhere and all others around the world.

Improve milk & reproduction with Immu-Pro today

GET IMMU-PRO & STAND STRONG TODAY 920-650-1631

Since 1973, your success is our commitment Watch vcy.tv Support 97milk.com



Immu-Pro: Improvement that makes dollars & sense

Buy & give away whole milk and cheese weekly

AG Inc. www.alphageneticsinc.com



Call today: 920-650-1631



Always promote milk and dairy products

For more good news from around the world, 24/7, call 712-432-3486. vcy.tv *some exclusions apply

DRINK **WHOLE MILK** — School Lunch Choice —

Citizens for Immune Boosting Nutrition

97milk.com

National Farmers



Signing New Organic Producers as a handler in Central & Southern PA

Milk Checks 3 times Monthly

No Equity Payments – National Organization

National Farmers - Northeast

Partnerships with CROPP Organic Valley & Horizon & Kalona Small Farms

241 McLean Rd, Cortland NY 13045

844-378-4169

www.nationalfarmers.com

Whole milk from page 1

questions, publicity, and the creation of 97 Milk.

The 97 Milk educational organization has worked alongside the Grassroots Pennsylvania Dairy Advisory Committee on the legislative side. As a team, they continue to lead the charge for children to have the choice of whole milk once again at school. They are pleased to have worked with the Nutrition Coalition, founded by Nina Teicholz, author of *Big Fat Surprise*, and to see other national dairy and farm organizations join in support in recent years -- from the American Dairy Coalition and Farm Bureau to National Milk Producers Federation and International Dairy Foods Association.

"We are grateful for this bill's champion, the honorable G.T. Thompson. We thank him for not giving up," said 97 Milk Baleboard originator Nelson Troutman in a Farmshine phone interview about the bill. "So many legislators get pounded from the top down, and they give up... and really, G.T. didn't have a lot to gain out of this except helping the people. He did this for the kids, for the people, for the farmers. This is not a mandate. This is a choice, and I cannot emphasize the word choice enough."

"The reason we got here is G.T.'s dedication to children having nutritious and delicious milk choices, and he brought it to the finish line in the House," said Bernie Morrissey, chairman of the Grassroots PA Dairy Advisory Committee. "We have to keep working on the Senate, and 97 Milk has been a major part of educating people about this choice kids will have when the Whole Milk for Healthy Kids Act becomes law. The people on our grassroots committee and 97 Milk -- we are a team. Our teams help each other. When you have a great team and teamwork, that's how things get done."

"This is a strong step in the right direction, and we have to keep going to our total



ALLOWING WHOLE MILK IN SCHOOL LUNCH PROGRAM
REP. GLENN THOMPSON
R-Pennsylvania

After being accused of caving to special interests, Ag Chair G.T. Thompson said: "My bill supports our kids and our dairy farmers, but I have to say: The only special interest here is our kids! It's our kids who have been

cheated of the nutrition they need. It's our kids who case studies have shown the rate of obesity and being overweight increased dramatically after access to whole milk and flavor was taken out of the schools."

destination," said G.N. Hursh, Lancaster County, Pa. dairy farmer and chairman of 97 Milk. "We at 97 Milk totally support this bill. Whole milk choice in schools is clearly a national improvement for our future leaders. This is a win for good taste and excellent nutrition!"

Dale Hoffman and his daughter Tricia Adams, also members of the Grassroots Pennsylvania Dairy Advisory Committee expressed their gratitude. Three generations operate Hoffman Farms in Potter County, Pa.

"G.T. has really fought for this and put a lot of work into this. We appreciate what he has done in helping out the kids and the farmers," said Dale in a phone interview. "When you look at the health situation, the trends have gone the other way without whole milk in the schools. Kids are dumping the milk, and you can't blame them. They need those nutrients physically and mentally. Milk is one of nature's most perfect foods. We produce it and grew up with it. Children should be able to choose it."

Grassroots Committee member Krista Byler, of Spartansburg, Pa. is a Union City school foodservice director and head chef. She said the Whole Milk for Healthy Kids Act "is huge for me because I have seen this from the startup, and I finally seeing movement in the school nutrition organizations. I see the whole picture coming together. I am amazed to see it reach this point that now students are much closer to having a milk choice that meets their nutritional needs," she said.

Byler notes that the milk carton shortage affecting school districts this year has been a catalyst for support among her peers for the expansion of choices in milkfat levels.

"It's sad to say, but as we struggle on the milk carton shortage, it forces people in my position to think outside the box and look at alternative service methods," said Byler. "We are seeing students asking for other milkfat options, such as whole milk."

She says she sees more of her peers today are excited about this bill and how it is worded in a way that makes it possible for them, as school foodservice directors, to implement -- to actually offer whole milk as an option for students and not be financially penalized by the federal government for exceeding arbitrary and outdated fat percentages on the meal.

"I'm excited to be closer to having this choice to meet students' needs in a way that is nutritious and that they find delicious. My students will be so excited," said Byler. "When it becomes law, it will be a huge win for kids everywhere, and our waste will certainly go down."

Look for more in *Farmshine* about this milestone, what's next, and the three amendments that were offered and approved along with the bill. They are: 1) allowing school milk to be either organic or non-organic, 2) preventing school milk from Chinese state-owned enterprises, and 3) prohibiting USDA from doing its proposed elementary school ban on flavored milk.

When it comes to

DAIRY SUPPLIES

WE'VE GOT YOU COVERED

Our Route Sales team can keep your dairy farm supplied with everything you need!



Call 717-354-8030
www.jbz dairy.com



Buy the MBS19 Bedding Spreader and get 10% off all bedding products for a year!

DeLaval INDEPENDENT AUTHORIZED DEALERSHIP

Dairyman's Datebook

DECEMBER 21, 10:30 a.m. Triple-Hil Sires Winter meeting, Heritage Family Restaurant, 118 East Main Street, Allensville, Pa.

DECEMBER 30, 11 a.m. Pennsylvania Holstein Association South-Central District meeting, Hoss's Steak & Sea House, Mechanicsburg, (at the intersection of the Pennsylvania Turnpike Exit 236 and Route 15).

JANUARY 9-11, PDPW Managers Academy for Dairy Professionals presented by Professional Dairy Producers (PDPW) at the Hilton Baton Rouge Capitol Center, Baton Rouge, La.

JANUARY 9-11, Maine Agricultural Trades Show, Augusta Civic Center, 76 Community Drive, Augusta.

JANUARY 13, noon, Annual luncheon and meeting of the New Jersey State Holstein Association, Amwell Fire House, 22 County Road 579, Ringoes.

JANUARY 15-17, Georgia Dairy Conference, Marriott Savannah

Riverfront Hotel & Conference Center, Savannah.

JANUARY 25-26, Northcentral Ohio Grazing Conference, Mt. Hope Event Center, 8074 State Route 241, Mt. Hope.

JANUARY 30, 9 a.m. Franklin County Crops Day, Kauffman Ruritan Community Center, 7289 Ruritan Drive, Chambersburg, Pa.

FEBRUARY 1, 6:30 p.m. Taste of Maryland Agriculture Celebration at Live! Casino & Hotel Maryland at Arundel Mills, 7002 Arundel Mills Circle 7777, Hanover, Md. For more information, please call Gail Yeiser: 410-353-3069.

FEBRUARY 9-11, Pennsylvania Holstein Convention, Hilton Scranton & Conference Center, 100 Adams Avenue, Scranton.

FEBRUARY 24, 6:30 p.m. Maryland Dairy Shrine banquet, Howard County Fairgrounds, 2210 Fairgrounds Road, West Friendship.

Important notice to all readers and advertisers:

There will be no **FARMSHINE** published on December 29 to allow our staff to enjoy their families at Christmas. We'll resume our weekly schedule beginning January 5.

Discount & Surplus Building Supply

Reduced prices with little or no sacrifice of quality. Roofing & siding cut to length.

- Galvanize/Galvalume, 36" coverage
- Painted, 36" coverage, 29 to 20 ga.
- Aluminum, 36" coverage, .015 to .040
- Stainless Steel

Door track | Lumber | Reject Plywood & OSB
GlasBoard | Scratch & Dent Appliances
Insulation | Rubber Roofing | Shingles
Seconds Ag Tuff PVC Liner Panel
Composite Decking



150 Slate Rd., Ephrata, PA 17522
717-445-5222 | Fax 717-445-4841

Auction Guide

DEC. 19, 9 a.m. Zook Farm Auction, Lancaster, Pa. Sale managed by Tim Weaver Auction Service.

DEC. 20, 10:30 a.m. Special Christmas Dairy Cow & Heifer Sale, New Holland Sales Stables, New Holland, Pa. Sale managed by New Holland Sales Stables.

DEC. 22, 10 a.m. Wolfe Brothers Farm Machinery Auction, Wellsboro, Pa. Sale managed by Fraley Auction Company.

DEC. 22, 11 a.m. Two Herd Dairy Sale, Penns Valley Livestock, Centre Hall, Pa. Sale managed by Penns Valley Livestock.

DEC. 27, 9:30 a.m. Special Sheep & Goat Sale, New Holland Sales Stables, New Holland, Pa. Sale managed by New Holland Sales Stables.

DEC. 28, 11:15 a.m. Special Dairy Sale, Fisher's Quality Dairy Sales, Ronks, Pa. Sale managed by Fisher's Quality Dairy Sales.

DEC. 29, 7:30 a.m. Horse Consignment Auction, Penns Valley Livestock, Centre Hall, Pa. Sale managed by Penns Valley Livestock.

2024

JAN. 1, 8 a.m. New Year's Day Sale, New Holland Sales Stables, New Holland, Pa. Sale managed by New Holland Sales Stables.

JAN. 3, 10:30 a.m. Dairy Cow & Heifer Sale, New Holland Sales Stables, New Holland, Pa. Sale managed by New Holland Sales Stables.

JAN. 16, 9 a.m. King Farm Auction, Lititz, Pa. Sale managed by Tim Weaver Auction Service.

FEB. 10, Pa. Holstein Convention Sale, Scranton, Pa. Sale managed by Pa. Holstein Association.

Advertiser's Index

| | |
|------------------------------------|---------------------------------|
| Agri-Trac.....9 | Myers, Roger Insurance.....9,20 |
| Albright, Daniel.....23 | National Farmers.....4 |
| Alpha Genetics (Immu-Pro)....4 | Nelson & Sons Concrete Gr.....6 |
| Beiler Industries.....22 | New Holland Sales Stables...20 |
| Beitzel Spraying.....6 | Nicholas Meat.....14 |
| Brubaker, Rufus Refrigeration...6 | Oregon Water Conditioning.16 |
| Case, Harold D., Jr.....21 | Penns Valley Livestock.....21 |
| Cedar Crest Equipment.....17 | Petersheims's Cow Mattress.10 |
| DHIA Pages.....8-11 | Power Systems Electric.....13 |
| Ephrata Agway.....15 | Precast Systems.....22 |
| Fisher, Eli Construction.....16 | Select Sires Member Coop...23 |
| Fisher's Quality Dairy Sales...20 | Shady Lane Curtains.....3 |
| Gehm, L.R.....15 | Slate Road Supply.....6 |
| Holstein Association USA.....22 | Sollenberger Silos.....21 |
| Horst Grain Roasting.....22 | Sturdy Built Manufacturing....7 |
| I&J Manufacturing.....15 | Triple Hil Sires.....24 |
| Intertribal Ag Council.....12 | Triple M Farms.....21 |
| JBS.....6 | Udder Comfort.....2 |
| JBZ Dairy Advantage.....5,7 | Univest Bank.....22 |
| Keystone Concrete Products.13 | Weaver's Toasted Grains.....16 |
| Leabrook Ag.....7 | White Horse Construction....18 |
| Lira Gold.....11 | Willow Road Silo Doors.....21 |
| Mid-Atlantic Triply Ceilings....15 | Zartman Farms.....18 |
| Morrissey Insurance.....16 | Zimmermans Glass Storage....21 |
| Mueller.....14 | |

CDE invites you to listen to PYP discussion

HARRISBURG, Pa. – The Center for Dairy Excellence has published its monthly “Protecting Your Profits” discussion with updates about the November 2023 milk marketplace. The Center’s Executive Director, Jayne Sebright, shared her perspective on milk markets, supply factors, and what risk management programs are offering in terms of margin right now.

“December is a great time for planning, reflection, and looking at those controllables in your milk price. The Center has resources to help, and this month’s ‘Protecting Your Profits’ discussion touches on some key market updates and ways you can start evaluating your risk management strategy heading into 2024,” Sebright shared.

View highlights from the November “Protecting Your Profits” discussion:

- Class III and IV prices in 2024 show a little improvement from 2023. They are up slightly from the five-year average.
- Milk production was down again in October, with cow

numbers down nationwide and cows continuing to move out of the western region of the US.

• Exports continue to show weakness, down 12 percent in September and down 7 percent year to date.

As part of the risk management portion of the conversation, Sebright shared the latest Dairy Margin Coverage (DMC) margins. The October DMC margin was 6 cents under the \$9.50 level, but DMC was still an important tool in 2023. It yielded more than \$24,000 in indemnity per one million pounds of coverage.

To access the “Protecting Your Profits” recording in a format that is most convenient for you, the Center offers the series in a webinar and podcast format each month at no cost, at:

www.centerfordairyexcellence.org/pyp

Subscribe to get notified via a text alert when the recordings are released each month. For more information about risk management planning, call the Center at 717-346-0849 or email Sebright at jsebright@centerfordairyexcellence.org.

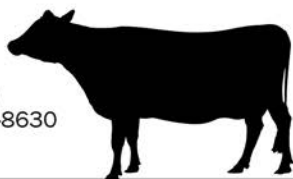


Souderton, PA

SELL YOUR CATTLE!
PURCHASING CULL COWS

Same-Day Payment
NO Fees • NO Commission

For more information:
Direct: (970) 506-8215
Duff George: (717) 594-8630



Livestock Buying Stations are OPEN:

7195 Molly Pitcher Hwy
Greencastle, PA 17225
Monday & Wednesday
9 a.m. - 2:30 p.m.

503 School Rd
Denver, PA 17517
Tuesday & Thursday
9 a.m. - 2:30 p.m.

Contact Doug Musser: (267) 371-9824

(JBS) Learn more about our brands at jbsfoodsgroup.com

249 Allentown Rd | Souderton, Pennsylvania 18964 USA

May all the blessings of the season be with you throughout the year.



From all of us at:

BEITZEL'S SPRAYING

Witmer, PA 17585 • 717-392-7227 or

Toll Free 1-800-727-7228

7:00 AM to 5:00 PM

CERTIFIED COMMERCIAL APPLICATIONS

LICENSED • INSURED

Spraying Since 1961

Radio Dispatched Trucks

NELSON & SONS CONCRETE GROOVING

Womelsdorf, Pa. 610-589-1030
Serving PA & Surrounding States

Save Cows,
Save Your
Profit Margins

www.NelsonandSonsConcreteGrooving.com

Rufus
Brubaker
Refrigeration LLC

Toll Free 1-866-665-3525

**New & Used
Quality Milk Tanks**

400 Gallon 1000 Gallon

700 Gallon 1500 Gallon

800 Gallon

**Walk-In Coolers and
Freezers, Panels and
Doors Available.**

HAUSA invites nominations for annual awards

BRATTLEBORO, Vt. — Outstanding Holstein breeders and dairy industry leaders are recognized each year with Holstein Association USA's annual awards. These include the prestigious Distinguished Young Holstein Breeder, Distinguished Leadership, and Elite Breeder recognitions.

"A highlight of every National Holstein Convention is recognizing our deserving award recipients for their contributions to the Holstein breed, Holstein Association USA, and the greater dairy community," says Holstein Association USA CEO John Meyer. "We look forward to continuing to add to the

high-caliber list of award recipients and encourage you to nominate people you feel are deserving."

Holstein enthusiasts are invited to submit nominations for the Elite Breeder and Distinguished Leadership awards. Applications for the Elite Breeder and Distinguished Leadership awards are considered for three years after initial submission. Current Holstein breeders between the ages of 21 and 40 are encouraged to apply for the Distinguished Young Holstein Breeder award.

About the awards:

- The Elite Breeder Award honors a living

Holstein Association USA member, family, partnership, or corporation who has bred outstanding animals and thereby made a notable contribution to the advancement of U.S. Registered Holsteins.

- The Distinguished Leadership Award is given to an individual who has provided outstanding and unselfish leadership that has contributed to the improvement of Holstein Association USA and/or the dairy industry.

- The Distinguished Young Holstein Breeder Award recognizes significant accom-

plishments of young Registered Holstein® breeders ages 21 to 40. Submissions can be made for individuals, a couple, or business partners. The winning applicant will receive travel and lodging expenses (for up to two people) to National Holstein Convention, complimentary tickets to the Convention banquet, and a \$2000 cash award.

Award applications are available on the Holstein Association USA website at www.holsteinusa.com/awards/individuals

Nomination applications must be post-marked by January 31, 2024.

The search is on

Holstein sales rep. needed in New York

BRATTLEBORO, Vt. — Holstein Association USA has launched a search for a regional sales representative for the State of New York. The candidate must reside in the Syracuse / Utica area.

The successful candidate will promote and sell products and services to individual dairy producers that will increase both their short-range and long-term profitability. The individual will build strong mutually beneficial relationships with existing and new members. Further, he or she will develop a network of industry contacts to stay current on industry topics and developments and to obtain new business prospects.

The Association is looking for a candidate with:

- A bachelor's degree in dairy science, animal science, or related field, preferred
- Five years of dairy industry experience, preferred
- Three to five years of sales experience, preferred

Competencies and requirements include:

- Must have a valid driver's license and insurable driving record
 - Knowledge of the U.S. dairy industry, dairy cattle management, genetics, and the Registered Holstein business
 - Exceptional sales skills
 - Excellent cattle evaluation skills
 - Excellent communication skills
 - Very strong attention to detail and organizational skills
 - Positive, professional, and enthusiastic attitude
 - Ability to travel 50% - 75% of work time
- Questions can be directed to Human Resources at employment@holstein.com.

Holstein Association USA is the largest dairy breed organization in the world. Since its formation, the Association has been dedicated to the development of the Holstein breed. It maintains the records for all ancestry, identity, ownership, and performance information on more than 22 million Registered Holsteins.

Offering a Full Line of Ag Seed

Early Pay Discounts Available Now Corn, Soybeans, Grain Sorghum, & Alfalfa

Triticale
Wheat
Barley
Rye
Oats
Alfalfa
Sorghums
Sudangrass

LEABROOK AG
"Helping You Cover Ground"
2278 Leabrook Rd. Lancaster, PA 17601
(717) 898-9576

Hay & Pasture Mixes
Annual Ryegrass
Buckwheat
Radishes
Clovers
Hairy Vetch
Forage Peas
Custom Mixes

Corn, Soybeans, & Grain Sorghum



SORGHUM PARTNERS®
A BRAND OF SAW SEED COMPANY



Double Team™
SORGHUM CROPPING SOLUTION



ALFALFA PARTNERS®
A BRAND OF SAW SEED COMPANY



Hefty
BRAND SEED



**JBZ DAIRY
ADVANTAGE**

NOW FULFILLING PRESCRIPTION Rx ORDERS

Free Standard Shipping with
Any Size Rx Order for
Full-Line Route Customers

ORDER IN 3 EASY STEPS!

1

OBTAIN A
SCRIPT FROM
YOUR VET

2

SHOW THE
SCRIPT TO
YOUR JBZ
SALES REP

3

PRODUCTS
WILL BE
SHIPPED
DIRECTLY TO
YOU

- \$20 service fee if prescription is not already on file
- Free standard shipping on Rx orders over \$400



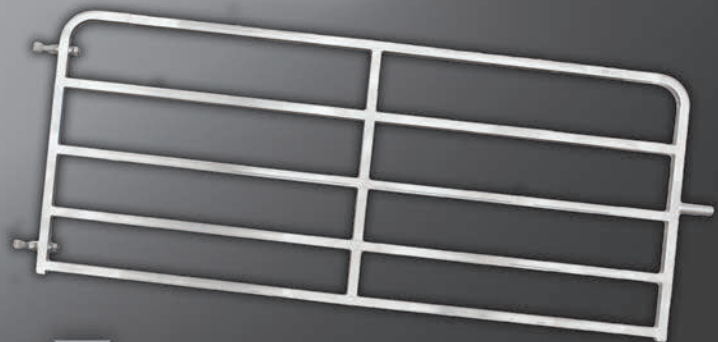
Call (717) 354-8030



jbzdairy.com

**Sturdy
Built**
Manufacturing, LLC

Check our stock
for the size you need!
Many length choices
from 4' through 16'



Pre-Fab Square Tubing Galvanized Gates & Panels

In Stock for Quick Pickup!

- 48" x 5-Bar height
- Galvanized square tubing 1.75" x 14 gauge
- Gates include 6" latch stubs and female adjustable hinge pins
- Full line of galvanized mounting hardware in stock



Call 866-543-5116

sales@sturdybuiltmg.net

260 S. Muddy Creek Rd. Denver, PA 17517



Request a
FREE Gate
& Fencing
Equipment
Guide!



NOVEMBER 2023

Adams County

| | | | | |
|------------------------|--------|-------|------|------|
| RANDELL & LOIS BOUGHER | 223 HO | 32287 | 1329 | 1039 |
| JOB0 HOLSTEIN FARM | 977 HO | 29889 | 1101 | 917 |
| JOB0 HOLSTEIN FARM | 134 HO | 29478 | 1112 | 916 |
| ROUND HILL DAIRY | 88 HO | 26642 | 1134 | 855 |
| JOB0 HOLSTEIN FARM | 75 BS | 25006 | 1019 | 825 |
| BER CRK | 263 HO | 25052 | 994 | 788 |
| JOB0 HOLSTEIN FARM | 21 XX | 23283 | 1033 | 774 |

HERDS WITH A RHA SCC LESS THAN 200,000

| | | | |
|------------------------|----|-----|-----|
| RANDELL & LOIS BOUGHER | HO | 76 | 223 |
| JOB0 HOLSTEIN FARM | XX | 162 | 21 |
| JOB0 HOLSTEIN FARM | HO | 180 | 134 |
| JOB0 HOLSTEIN FARM | HO | 183 | 977 |

Beaver County

| | | | | |
|---------------|-------|-------|-----|-----|
| BRUNTON DAIRY | 84 HO | 22972 | 996 | 761 |
|---------------|-------|-------|-----|-----|

HERDS WITH A RHA SCC LESS THAN 200,000

| | | | |
|---------------|----|-----|----|
| BRUNTON DAIRY | HO | 158 | 84 |
|---------------|----|-----|----|

Bedford County

| | | | | |
|--------------------------|--------|-------|------|-----|
| BRENT HEISEL | 111 HO | 29044 | 1182 | 972 |
| BOWMAN BROTHERS | 200 HO | 27911 | 1153 | 892 |
| ADAM NOLT | 90 HO | 26844 | 1059 | 885 |
| SINGING BROOK FARMS | 305 HO | 27409 | 1068 | 879 |
| ANDREW & CHELSEY RITCHEY | 85 HO | 25562 | 1074 | 866 |
| JOHN W. BECHTEL | 62 HO | 27393 | 984 | 851 |
| MARLIN D. HEISEY | 152 HO | 25827 | 1055 | 827 |
| BRIAN & BARRY WOY | 387 HO | 26529 | 1051 | 826 |
| SNIDER HOMESTEAD | 26 HO | 23110 | 893 | 722 |
| NATALI BROTHERS | 75 XX | 23706 | 982 | 719 |
| MIKE DIVELY | 84 HO | 22330 | 891 | 709 |
| RUSSELL WYLES | 109 HO | 19352 | 723 | 645 |
| MIKE & FANNIE BROU | 188 JE | 15845 | 791 | 604 |
| GLENN & MATT MOYER | 660 XX | 15862 | 653 | 557 |
| RYAN CARBAUGH | 49 HO | 17507 | 701 | 552 |
| SNIDER HOMESTEAD | 50 GU | 15913 | 735 | 548 |

HERDS WITH A RHA SCC LESS THAN 200,000

| | | | |
|--------------------------|----|-----|-----|
| BRENT HEISEL | HO | 50 | 111 |
| ANDREW & CHELSEY RITCHEY | HO | 70 | 85 |
| ADAM NOLT | HO | 84 | 90 |
| JOHN W. BECHTEL | HO | 103 | 62 |
| MIKE DIVELY | HO | 107 | 84 |
| BOWMAN BROTHERS | HO | 118 | 200 |
| SINGING BROOK FARMS | HO | 127 | 305 |
| MARLIN D. HEISEY | HO | 149 | 152 |
| RYAN CARBAUGH | HO | 155 | 49 |
| BRIAN & BARRY WOY | HO | 177 | 387 |
| RUSSELL WYLES | HO | 182 | 109 |
| KEITH FISHER | MS | 188 | 39 |

Berks County

| | | | | |
|-------------------------|--------|-------|------|------|
| SUMMIT LEVEL FARM | 123 HO | 34887 | 1375 | 1077 |
| WARREN Z. GOOD | 128 HO | 29865 | 1188 | 940 |
| BRUBAKER FAMILY FARM | 118 HO | 27717 | 1223 | 925 |
| GLEN-JAN HOLSTEINS | 119 HO | 28460 | 1181 | 910 |
| DARRYL OBERHOLTZER | 93 HO | 28640 | 1154 | 907 |
| LEROY H. HOOVER | 93 HO | 28309 | 1106 | 906 |
| KURTLAND FARMS | 322 HO | 29605 | 1177 | 905 |
| LEONARD HORST | 72 HO | 28607 | 1115 | 904 |
| LAWRENCE GOOD | 83 HO | 29045 | 1163 | 898 |
| WOODEN BRIDGE FARM | 65 HO | 27790 | 1087 | 891 |
| LARRY BRUBAKER | 102 HO | 28508 | 1119 | 887 |
| TULPACANAL FARM | 162 HO | 27149 | 1059 | 866 |
| MEADOWVIEW DAIRY | 115 HO | 27872 | 1032 | 847 |
| ZAHNCROFT DAIRY LLC. | 271 HO | 26192 | 1093 | 844 |
| MOUNTAIN VIEW HOLSTEINS | 127 HO | 26432 | 1109 | 842 |
| NEIL BURKHOLDER | 56 HO | 26545 | 1021 | 839 |
| GERALD HOOVER | 70 HO | 26086 | 991 | 834 |
| JUSTIN & REGINA HORST | 121 HO | 25426 | 1101 | 809 |
| EVERETT NEWSWANGER | 49 HO | 25113 | 939 | 799 |
| SHELDON & JOLENE B. | 133 HO | 24119 | 993 | 789 |
| MATTHEW BENNETCH | 142 HO | 23420 | 1027 | 783 |
| TODD SCHROEDER | 171 HO | 25263 | 1019 | 781 |

| | | | | |
|---------------------------|--------|-------|------|-----|
| LEON S. LAUVER | 85 HO | 25333 | 1002 | 780 |
| DUANE BURKHOLDER | 78 JE | 21559 | 1159 | 779 |
| BRIAN MARTIN | 138 JE | 20790 | 1055 | 777 |
| DARRYL BRUBAKER | 87 HO | 24216 | 1036 | 776 |
| RONALD KELCHNER | 145 HO | 24348 | 911 | 768 |
| PHILIP NEWSWANGER | 78 HO | 23987 | 970 | 756 |
| KY-ANNE-FARMS | 142 HO | 23690 | 945 | 747 |
| DANIEL WEAVER | 52 HO | 23113 | 975 | 746 |
| OAK GROVE HOLSTEINS | 40 HO | 22384 | 907 | 732 |
| AARON BURKHOLDER | 137 JE | 19363 | 1036 | 729 |
| MARLIN S. LAUVER | 61 HO | 22010 | 892 | 705 |
| WOODEN BRIDGE FARM | 22 JE | 18595 | 986 | 701 |
| KEVIN & JANICE BURKHOLDER | 47 HO | 22050 | 911 | 696 |
| RAIL-CRESTS | 43 HO | 19813 | 868 | 668 |
| MARVIN BURKHOLDER | 45 HO | 20618 | 837 | 661 |
| WILLIAM HOOVER | 54 XX | 18302 | 885 | 646 |
| MATT HOUP | 42 HO | 19794 | 797 | 615 |

HERDS WITH A RHA SCC LESS THAN 200,000

| | | | |
|---------------------------|----|-----|-----|
| SUMMIT LEVEL FARM | HO | 58 | 123 |
| WOODEN BRIDGE FARM | HO | 60 | 65 |
| PHILIP NEWSWANGER | HO | 78 | 78 |
| MEADOWVIEW DAIRY | HO | 85 | 115 |
| LEONARD HORST | HO | 95 | 72 |
| GERALD HOOVER | HO | 96 | 70 |
| KY-ANNE-FARMS | HO | 99 | 142 |
| WOODEN BRIDGE FARM | JE | 105 | 22 |
| TULPACANAL FARM | HO | 109 | 162 |
| DARRYL OBERHOLTZER | HO | 110 | 93 |
| MARVIN BURKHOLDER | HO | 121 | 45 |
| WARREN Z. GOOD | HO | 124 | 128 |
| BRUBAKER FAMILY FARM | HO | 125 | 118 |
| LAWRENCE GOOD | HO | 127 | 83 |
| EVERETT NEWSWANGER | HO | 131 | 49 |
| MOUNTAIN VIEW HOLSTEINS | HO | 144 | 127 |
| GLEN-JAN HOLSTEINS | HO | 152 | 119 |
| JUSTIN & REGINA HORST | HO | 157 | 121 |
| ZAHNCROFT DAIRY LLC. | HO | 158 | 271 |
| LARRY BRUBAKER | HO | 162 | 102 |
| DANIEL WEAVER | HO | 175 | 52 |
| KEVIN & JANICE BURKHOLDER | HO | 179 | 47 |
| MATT HOUP | HO | 180 | 42 |
| AARON BURKHOLDER | JE | 181 | 137 |
| TODD SCHROEDER | HO | 194 | 171 |

Blair County

| | | | | |
|-----------------------|---------|-------|------|-----|
| PENN ENGLAND LLC. | 2028 HO | 29606 | 1206 | 989 |
| MILL HILL FARMS | 474 HO | 30096 | 1262 | 981 |
| SMITH HOLLOW FARMS | 426 HO | 30442 | 1190 | 979 |
| KENSINGER FARMS | 120 HO | 28984 | 1129 | 948 |
| ANDREW & JEN HELTZEL | 138 HO | 27107 | 1213 | 939 |
| DRY CREEK FARM | 237 XX | 29810 | 1193 | 937 |
| JAMES BAKER | 124 HO | 28065 | 1157 | 916 |
| MERLE & PRISCILLA FOX | 115 HO | 26872 | 1093 | 906 |
| SMITH HOLLOW FARMS | 17 BS | 26022 | 1055 | 895 |
| COVE VIEW FARM | 182 HO | 26473 | 1162 | 873 |
| BURKET FALLS FARM | 93 HO | 24880 | 1054 | 806 |
| POINT VIEW FARM LLC. | 60 HO | 24929 | 941 | 779 |
| STEVEN & RHODA NOLT | 50 HO | 24312 | 955 | 775 |
| JERRY & BECKY BECHTEL | 60 HO | 23795 | 981 | 739 |
| BAILEY FARM | 97 HO | 20326 | 842 | 663 |
| STONEY HOLLOW JERSEYS | 67 JE | 17637 | 865 | 658 |
| JOBE FARM | 24 JE | 16327 | 841 | 606 |

HERDS WITH A RHA SCC LESS THAN 200,000

| | | | |
|-----------------------|----|-----|------|
| MERLE & PRISCILLA FOX | HO | 58 | 115 |
| KENSINGER FARMS | HO | 70 | 120 |
| ANDREW & JEN HELTZEL | HO | 89 | 138 |
| POINT VIEW FARM LLC. | HO | 100 | 60 |
| MILL HILL FARMS | HO | 102 | 474 |
| STEVEN & RHODA NOLT | HO | 109 | 50 |
| SMITH HOLLOW FARMS | HO | 116 | 426 |
| DRY CREEK FARM | XX | 124 | 237 |
| PENN ENGLAND LLC. | HO | 127 | 2028 |
| JERRY & BECKY BECHTEL | HO | 130 | 60 |
| COVE VIEW FARM | HO | 150 | 182 |
| BURKET FALLS FARM | HO | 160 | 93 |
| JOBE FARM | JE | 167 | 24 |
| BAILEY FARM | HO | 197 | 97 |

Bradford County

| | | | | |
|---------------------------|--------|-------|------|-----|
| JAY GOOD & BEN & KARLA | 695 HO | 29224 | 1147 | 936 |
| SOUTHMONT FARMS | 340 HO | 29181 | 1151 | 926 |
| DEAN & REBECCA JA | 88 HO | 26202 | 967 | 810 |
| KIM, DORTHY & LESLIE KINS | 80 HO | 25145 | 916 | 767 |
| CLAY & SALLY HARKNES | 85 HO | 24333 | 929 | 767 |
| BRUCE KING, JR. | 90 HO | 24200 | 969 | 758 |
| STEVE GROFF | 143 HO | 22425 | 892 | 721 |
| SOUTHMONT FARMS | 185 JE | 19709 | 1037 | 720 |
| SCHUCKER FARM | 56 HO | 22076 | 872 | 709 |
| LISA SCHUCKER | 61 JE | 18543 | 970 | 706 |
| BRAUND VALLEY FARM | 91 HO | 21012 | 839 | 672 |
| NOBLEDALE FARM | 84 JE | 16985 | 836 | 649 |
| BRAUND VALLEY FARM | 39 HO | 15083 | 627 | 502 |

HERDS WITH A RHA SCC LESS THAN 200,000

| | | | |
|-----------------------------|----|-----|-----|
| JAY GOOD & BEN & KARLA MULL | HO | 128 | 695 |
| STEVE GROFF | HO | 134 | 143 |
| KIM, DORTHY & LESLIE KINSMA | HO | 157 | 80 |
| BRUCE KING, JR. | HO | 172 | 90 |
| SOUTHMONT FARMS | HO | 195 | 340 |
| SOUTHMONT FARMS | JE | 197 | 185 |

Bucks County

| | | | | |
|-------------------------|--------|-------|------|-----|
| CROOKED ACRES DAIRY | 63 HO | 28752 | 1151 | 906 |
| DELAWARE VALLEY UNIVERS | 37 HO | 25177 | 1077 | 828 |
| DAVID & JOSHUA BISHOP | 95 HO | 23152 | 983 | 728 |
| TANNERS BROS. DAIRY | 233 HO | 24196 | 840 | 725 |
| GALEN & RANDY LEATHE | 92 HO | 19334 | 789 | 606 |
| DELAWARE VALLEY UNIVERS | 12 AY | 18309 | 750 | 591 |

HERDS WITH A RHA SCC LESS THAN 200,000

| | | | |
|----------------------------|----|-----|----|
| DELAWARE VALLEY UNIVERSITY | HO | 115 | 37 |
| DELAWARE VALLEY UNIVERSITY | AY | 127 | 12 |
| DAVID & JOSHUA BISHOP | HO | 143 | 95 |
| CROOKED ACRES DAIRY | HO | 159 | 63 |

Cb/Cmn/Crb Counties

| | | | | |
|---------------------|--------|-------|-----|-----|
| THOUSAND HILL DAIRY | 22 HO | 25260 | 943 | 770 |
| THOUSAND HILL DAIRY | 209 HO | 22925 | 890 | 706 |

HERDS WITH A RHA SCC LESS THAN 200,000

| | | | |
|---------------------|----|-----|-----|
| THOUSAND HILL DAIRY | HO | 132 | 209 |
|---------------------|----|-----|-----|

Centre County

| | | | | |
|-------------------|--------|-------|------|-----|
| PENN VIEW | 47 HO | 25600 | 1061 | 789 |
| DAN & PENNY ULMER | 261 HO | 25503 | 1060 | 775 |
| ASPEN HOLLOW | 46 HO | 23794 | 969 | 728 |
| MICHAEL K. KING | 48 HO | 22648 | 894 | 720 |

HERDS WITH A RHA SCC LESS THAN 200,000

| | | | |
|-------------------|----|-----|-----|
| PENN VIEW | HO | 80 | 47 |
| DAN & PENNY ULMER | HO | 135 | 261 |
| ASPEN HOLLOW | HO | 155 | 46 |
| MICHAEL K. KING | HO | 193 | 48 |

Chester County

| | | | | |
|-------------------------|--------|-------|------|------|
| MARILYN & DUANE HERSHEY | 906 HO | 30243 | 1257 | 1037 |
| DYLAN BRANTNER | 84 HO | 28974 | 1114 | 926 |
| DAVID F KING FARM #2 | 45 HO | 27911 | 1004 | 896 |
| JOE & KRISTEN LUSBY | 59 HO | 26691 | 1027 | 869 |
| JOEL M. KAUFFMAN | 78 HO | 27873 | 1175 | 867 |
| DAVID K. KING | 76 HO | 26472 | 1124 | 848 |
| CHRIST KAUFFMAN | 53 HO | 26093 | 1035 | 818 |
| NOAH H. MARTIN | 61 HO | 25352 | 1082 | 804 |
| JOHN S. BLANK, JR. | 65 HO | 26520 | 1046 | 802 |
| BENJAMIN & SADIE GLICK | 51 HO | 26246 | 989 | 802 |
| BRIAN D. NEWSWANGER | 96 HO | 25594 | 1043 | 800 |
| STEPHEN BEILER | 69 HO | 25217 | 1061 | 794 |
| AARON K. MILLER | 67 HO | 25561 | 1028 | 790 |
| PEI-VALLEY | 248 HO | 23315 | 978 | 790 |
| J. DAVID LAIR | 65 HO | 24795 | 994 | 787 |
| ELMER S. KING | 60 HO | 24110 | 1001 | 782 |
| ENOS K. STOLTZFUS | 54 HO | 25096 | 996 | 775 |
| DELMAR SENSENIG | 129 HO | 23325 | 915 | 754 |
| JACOB S. ESH | 52 HO | 24189 | 889 | 749 |
| WILMER F. KING | 55 HO | 23586 | 969 | 749 |
| AMOS LAPP | 59 HO | 24284 | 897 | 742 |
| REUBEN KING | 66 HO | 24387 | 916 | 732 |
| JOHN S. FISHER | 50 HO | 23636 | 891 | 722 |
| SAMUEL F. BLANK | 59 HO | 23083 | 895 | 720 |
| BENUEL M. KAUFFMAN, JR. | 58 HO | 22847 | 856 | 716 |
| SAMUEL E. STOLTZFUS | 55 HO | 23210 | 1014 | 716 |

| | | | | |
|---------------------------|--------|-------|------|-----|
| LEVI S. KING | 45 HO | 22601 | 949 | 712 |
| ELVIN E. KAUFFMAN | 77 HO | 23481 | 916 | 699 |
| ISAAC FISHER | 42 HO | 22461 | 926 | 697 |
| JONAS L. FISHER | 65 HO | 22373 | 874 | 694 |
| DAVID S. & MARY STOLTZFUS | 46 HO | 23123 | 1003 | 692 |
| JOE STOWE | 88 XX | 19356 | 839 | 654 |
| DON & PAM GABLE | 126 AY | 19675 | 801 | 628 |
| JOHN B. FISHER | 51 HO | 20907 | 806 | 622 |
| THE FARM AT DOE RUN | 15 JE | 15985 | 749 | 601 |
| STEVEN M. FISHER | 40 HO | 19693 | 790 | 599 |
| DAVID S. STOLTZFUS | 42 HO | 17626 | 696 | 547 |
| DANIEL E. STOLTZFUS | 41 HO | 17647 | 730 | 526 |
| MIKE S. ZOOK | 66 AY | 16648 | 659 | 525 |

HERDS WITH A RHA SCC LESS THAN 200,000

| | | | |
|------------------------|----|-----|----|
| JOE & KRISTEN LUSBY | HO | 73 | 59 |
| BRIAN D. NEWSWANGER | HO | 84 | 96 |
| JOHN S. BLANK, JR. | HO | 106 | 65 |
| JOEL M. KAUFFMAN | HO | 123 | 78 |
| JACOB S. ESH | HO | 126 | 52 |
| BENJAMIN & SADIE GLICK | HO | | |



| | | | | |
|---|--------|-------|-----|-----|
| SPRING RUN FARM | 60 HO | 23485 | 970 | 755 |
| BULLSHEAD DAIRY | 104 HO | 24618 | 984 | 751 |
| WALTER BURKHOLDER | 34 HO | 22925 | 939 | 735 |
| LESTER WENGER | 56 HO | 21905 | 867 | 711 |
| KOSER-VALLEY FARM | 35 HO | 20588 | 870 | 675 |
| ANDREW LEINBACH | 82 XX | 15648 | 841 | 609 |
| HERDS WITH A RHA SCC LESS THAN 200,000 | | | | |
| ROCK SOLID DAIRY | HO | 60 | 374 | |
| IRVIN ZIMMERMAN | HO | 62 | 129 | |
| RAINBOW VALLEY FARM | HO | 68 | 64 | |
| BULLSHEAD DAIRY | HO | 89 | 104 | |
| RYAN LEID | HO | 95 | 67 | |
| CURTIS WEAVER | HO | 95 | 201 | |
| COUNTRY VIEW FARM | HO | 95 | 60 | |
| GARY SNYDER | HO | 95 | 85 | |
| NEALAND FARMS | HO | 97 | 426 | |
| OAKVILLE ACRES LLC. | HO | 99 | 254 | |
| C VALLEY HOLSTEINS | HO | 109 | 74 | |
| HOMESTEAD RIDGE DAIRY | HO | 122 | 65 | |
| EVERETT & KATRINA NOLT | HO | 127 | 142 | |
| RYAN SNYDER | HO | 128 | 80 | |
| ALLEN Z. BURKHOLDER | HO | 129 | 78 | |
| ALLEN ZIMMERMAN | HO | 129 | 68 | |
| MARCUS GOOD | HO | 131 | 131 | |
| LESTER WENGER | HO | 155 | 56 | |
| CARL NEWSWANGER | HO | 169 | 138 | |
| MARK ZIMMERMAN | HO | 170 | 97 | |
| NEIL N. MARTIN | HO | 179 | 36 | |
| SPRING RUN FARM | HO | 187 | 60 | |
| ALVIN HOOVER | HO | 198 | 134 | |
| TRIPLE L FARM | HO | 199 | 168 | |

Dauphin County

| | | | | |
|---|-------|-------|------|-----|
| SYLVAN & RACHELANN PET | 51 HO | 27074 | 1073 | 853 |
| AMOS & NANCY KING | 44 HO | 25136 | 1069 | 808 |
| STEVEN & RACHEL EBERSOL | 66 HO | 24307 | 976 | 750 |
| PLEASANT HILL FARMS | 48 HO | 23178 | 929 | 736 |
| ISAAC E. LANTZ | 56 HO | 23163 | 890 | 718 |
| ALVIN & NOAMI FIS | 50 HO | 23229 | 935 | 713 |
| AMOS MARK STOLTZFUS | 54 HO | 24009 | 859 | 708 |
| PLEASANT HILL FARMS | 24 XX | 20960 | 910 | 698 |
| IVAN PRISCILLA ST | 50 HO | 22948 | 939 | 692 |
| SAMUEL & ELSIE KAUFF | 45 HO | 21708 | 836 | 682 |
| STEVEN & ELIZABETH K | 46 HO | 22059 | 840 | 665 |
| HERDS WITH A RHA SCC LESS THAN 200,000 | | | | |
| STEVEN & RACHEL EBERSOL | HO | 134 | 66 | |
| AMOS & NANCY KING | HO | 163 | 44 | |
| AMOS MARK STOLTZFUS | HO | 166 | 54 | |

Fayette County

| | | | | |
|---|--------|-------|-----|-----|
| COUNTYLINE DAIRY LLC. | 212 XX | 22142 | 992 | 776 |
| HERDS WITH A RHA SCC LESS THAN 200,000 | | | | |
| COUNTYLINE DAIRY LLC. | XX | 182 | 212 | |

Franklin County

| | | | | |
|---------------------------|--------|-------|------|-----|
| BURK LEA FARMS | 919 HO | 31293 | 1339 | 991 |
| ROARING CREEK FARM | 152 HO | 30252 | 1288 | 973 |
| DAVID BAKER | 112 HO | 29124 | 1247 | 964 |
| NEVIN WENGER | 91 HO | 29131 | 1177 | 943 |
| FREY'S FARM DAIRY | 210 HO | 28772 | 1089 | 942 |
| AMOS BENEDICT | 102 HO | 27279 | 1206 | 929 |
| WADE BENEDICT | 106 HO | 27429 | 1183 | 912 |
| RICECREST DAIRY LLC. | 228 HO | 28783 | 1134 | 910 |
| THOMAS PRIEST | 200 HO | 28295 | 1313 | 906 |
| MARVIN CONLEY | 68 HO | 28116 | 1147 | 895 |
| CARL PUGH & SON LLC. | 249 HO | 27314 | 1162 | 887 |
| RICK WADEL | 316 HO | 25225 | 1125 | 885 |
| STARR DAIRY | 103 HO | 27651 | 1081 | 884 |
| TWOTOP HOLSTEINS LLC. | 299 HO | 27777 | 1156 | 881 |
| LAMAR MARTIN | 64 HO | 26286 | 1074 | 869 |
| JAY HAWBAKER | 128 HO | 27586 | 1055 | 868 |
| EVAN HAWBAKER | 123 HO | 27764 | 1089 | 867 |
| IVAN BENEDICT | 68 HO | 26211 | 1089 | 863 |
| DAVID LEID | 82 HO | 26837 | 1070 | 848 |
| CREEKSIDE DAIRY | 164 HO | 26072 | 1053 | 836 |
| CURTIS MEYERS | 244 HO | 25455 | 1112 | 831 |
| ROOT CELLAR FARMS | 101 HO | 26064 | 1004 | 817 |
| BROOK END FARM | 118 HO | 25750 | 981 | 812 |
| ARLIN HECKMAN | 148 HO | 23223 | 999 | 779 |
| DANA FUNK | 155 HO | 24692 | 1083 | 761 |
| TY-TAN DAIRY | 70 XX | 21487 | 925 | 756 |
| LICKING CREEK FARM LLC. | 131 HO | 23814 | 964 | 751 |
| ANDREW GARBER | 127 HO | 23540 | 933 | 743 |
| EDWARD MARTIN | 53 HO | 23749 | 898 | 736 |
| DUSTIN & CARRIE GINGERICH | 174 JE | 19681 | 959 | 735 |
| LESLIE HAWBAKER | 97 HO | 23446 | 908 | 726 |

| | | | | |
|---|--------|-------|-----|-----|
| MIKE WINGERT | 90 HO | 21416 | 858 | 721 |
| MARCUS J LAUVER | 148 HO | 20575 | 818 | 620 |
| HERDS WITH A RHA SCC LESS THAN 200,000 | | | | |
| FREY'S FARM DAIRY | HO | 45 | 210 | |
| LICKING CREEK FARM LLC. | HO | 70 | 131 | |
| DANA FUNK | HO | 75 | 155 | |
| JAY HAWBAKER | HO | 84 | 128 | |
| AMOS BENEDICT | HO | 91 | 102 | |
| NEVIN WENGER | HO | 94 | 91 | |
| ROARING CREEK FARM | HO | 97 | 152 | |
| IVAN BENEDICT | HO | 100 | 68 | |
| EDWARD MARTIN | HO | 102 | 53 | |
| RICECREST DAIRY LLC. | HO | 110 | 228 | |
| LAMAR MARTIN | HO | 110 | 64 | |
| TY-TAN DAIRY | XX | 110 | 70 | |
| BROOK END FARM | HO | 114 | 118 | |
| DUSTIN & CARRIE GINGERICH | JE | 118 | 174 | |
| EVAN HAWBAKER | HO | 121 | 123 | |
| MARVIN CONLEY | HO | 127 | 68 | |
| TWOTOP HOLSTEINS LLC. | HO | 128 | 299 | |
| BURK LEA FARMS | HO | 133 | 919 | |
| DAVID LEID | HO | 135 | 82 | |
| MIKE WINGERT | HO | 145 | 90 | |
| DAVID BAKER | HO | 151 | 112 | |
| CURTIS MEYERS | HO | 159 | 244 | |
| STARR DAIRY | HO | 170 | 103 | |
| ROOT CELLAR FARMS | HO | 173 | 101 | |
| ARLIN HECKMAN | HO | 186 | 148 | |

Fulton County

| | | | | |
|---|--------|-------|------|-----|
| MISTY MOUNTAIN DAIRY | 482 HO | 28761 | 1231 | 930 |
| MARK KNEPPER | 465 JE | 21194 | 1118 | 795 |
| KIN DU FARM | 107 HO | 19323 | 751 | 596 |
| HERDS WITH A RHA SCC LESS THAN 200,000 | | | | |
| MARK KNEPPER | JE | 188 | 465 | |
| MISTY MOUNTAIN DAIRY | HO | 193 | 482 | |

Huntingdon County

| | | | | |
|---|--------|-------|------|-----|
| DOUGLAS VARNER | 230 HO | 26648 | 1105 | 867 |
| KEN & CINDY BROCKETT | 110 HO | 23112 | 975 | 788 |
| DOUGLAS PARSONS | 159 XX | 22602 | 918 | 747 |
| JOHN & TRAVIS COUCH | 96 HO | 23881 | 942 | 743 |
| DOUGLAS VARNER | 31 AY | 20187 | 890 | 682 |
| HERDS WITH A RHA SCC LESS THAN 200,000 | | | | |
| DOUGLAS VARNER | HO | 46 | 230 | |
| DOUGLAS VARNER | AY | 52 | 31 | |
| KEN & CINDY BROCKETT | HO | 190 | 110 | |

Indiana County

| | | | | |
|---|--------|-------|------|-----|
| NATHANIEL STOLTZFUS | 79 HO | 27515 | 1104 | 875 |
| MICAH BEILER | 109 HO | 25057 | 993 | 785 |
| HERDS WITH A RHA SCC LESS THAN 200,000 | | | | |
| NATHANIEL STOLTZFUS | HO | 175 | 79 | |
| MICAH BEILER | HO | 186 | 109 | |

Juniata County

| | | | | |
|---|--------|-------|------|-----|
| LELAND EBERLY | 76 HO | 30136 | 1243 | 960 |
| KELVIN MARTIN | 129 HO | 28165 | 1150 | 884 |
| ZUGSTEAD FARM | 34 HO | 27619 | 1173 | 864 |
| ZUGSTEAD FARM | 746 HO | 27599 | 1198 | 859 |
| ZUGSTEAD FARM | 36 HO | 27102 | 1160 | 842 |
| SEVEN STARS DAIRY | 350 XX | 25824 | 1002 | 802 |
| DWIGHT MARTIN | 77 HO | 24961 | 1010 | 791 |
| HENRY-ACRES HOLSTEIN | 230 HO | 24439 | 1036 | 777 |
| HORST BROTHERS | 83 HO | 24434 | 970 | 774 |
| SPEERETTE FARM | 79 HO | 22526 | 872 | 699 |
| R. E. SHEARER & FAMILY | 82 HO | 18232 | 680 | 557 |
| HERDS WITH A RHA SCC LESS THAN 200,000 | | | | |
| LELAND EBERLY | HO | 99 | 76 | |
| KELVIN MARTIN | HO | 100 | 129 | |
| HORST BROTHERS | HO | 117 | 83 | |
| ZUGSTEAD FARM | HO | 136 | 36 | |
| SEVEN STARS DAIRY | XX | 136 | 350 | |
| DWIGHT MARTIN | HO | 140 | 77 | |
| SPEERETTE FARM | HO | 190 | 79 | |

Lancaster County

| | | | | |
|----------------------|---------|-------|------|------|
| NATHAN J. HORNBERGER | 93 HO | 32504 | 1375 | 1022 |
| BRUBAKER FARMS | 1429 HO | 32350 | 1247 | 991 |
| CLINTON HURSH | 77 HO | 30435 | 1173 | 978 |
| MARK F. STOLTZFUS | 54 HO | 29460 | 1196 | 958 |
| MEADOW VISTA FARM | 861 HO | 30088 | 1251 | 955 |
| JOEL & PRISCILLA | 42 HO | 30440 | 1279 | 953 |
| MARVIN LEE ZIMMERMAN | 114 HO | 29890 | 1266 | 948 |

| | | | | |
|------------------------|---------|-------|------|-----|
| JEFF SENSENIG | 86 HO | 29125 | 1236 | 945 |
| WEAVER HOMESTEAD FARM | 208 HO | 29639 | 1212 | 944 |
| RANCKSTEAD FARM LLC. | 92 HO | 29999 | 1149 | 935 |
| MEADOW SPRING FARM | 527 HO | 29578 | 1178 | 934 |
| OLD PIKE DAIRY | 142 HO | 30028 | 1225 | 934 |
| J. RANDALL SENSENIG | 103 HO | 28390 | 1147 | 932 |
| ANDREW L. WEAVER | 105 HO | 29909 | 1248 | 930 |
| CLINTON L. SENSENIG | 202 XX | 28415 | 1190 | 928 |
| KREIDER DAIRY FARMS | 2092 HO | 29094 | 1202 | 920 |
| CENTRAL MANOR DAIRY | 213 HO | 29825 | 1235 | 916 |
| MELVIN MILLER | 78 HO | 29483 | 1118 | 911 |
| CHARLES FARMS, INC. | 398 HO | 29604 | 1237 | 910 |
| EAGLE VALLEY FARM | 53 HO | 28315 | 1151 | 910 |
| PAUL DAVID GARMAN | 57 HO | 28960 | 1108 | 909 |
| JONATHAN S. STOLTZFUS | 76 HO | 28347 | 1257 | 907 |
| DANIEL F. BEILER | 65 HO | 30344 | 1189 | 906 |
| JAY & JOANNE WISE | 80 HO | 27150 | 1166 | 905 |
| MATT AUMENT | 72 HO | 27705 | 1100 | 904 |
| STATELINE HOLSTEINS | 124 HO | 28314 | 1110 | 900 |
| FERNCREST FARM | 77 HO | 28532 | 1111 | 897 |
| SPRING MEADOW DAIRY | 82 HO | 28706 | 1057 | 896 |
| MELVIN L. BEILER | 70 HO | 29535 | 1060 | 896 |
| TOM NAUMAN | 71 HO | 27185 | 1060 | 895 |
| MAPLEHOF FARM, INC. | 134 HO | 28308 | 1092 | 893 |
| JOHN M. BURKHOLDER | 142 HO | 28029 | 1171 | 893 |
| SWEIGART FARMS LLC. | 526 HO | 29268 | 1094 | 893 |
| SPRING VALLEY DAIRY | 91 HO | 28906 | 1113 | 890 |
| DELMAR SHELLY | 55 HO | 27603 | 1145 | 889 |
| CURVIN MARTIN | 79 HO | 28619 | 1131 | 889 |
| STONER DAIRY FARM LLC. | 447 HO | 28608 | 1185 | 889 |
| TRI-WILLOW FARMS | 97 HO | 28396 | 1087 | 888 |
| HAITI HOLLOW DAIRY | 51 HO | 28852 | 1133 | 881 |
| RIVERSIDE ACRES | 65 HO | 27633 | 1095 | 881 |
| MERVIN Z. HOOVER | 60 HO | 27053 | 1052 | 880 |
| EZRA S. HORST, JR. | 122 HO | 28004 | 1131 | 877 |
| DELMAR J. OBERHOLTZER | 99 HO | 27383 | 1082 | 874 |
| STEPHEN GLICK | 86 HO | 27281 | 1103 | 870 |
| EDWIN N. ZEISET | 78 HO | 27286 | 1133 | 866 |
| DAVID Z. BEILER | 60 HO | 28454 | 1082 | 864 |
| FOUR CORNER FARM | 72 HO | 28107 | 1147 | 864 |
| CENTRAL MANOR DAIRY | 12 XX | 25876 | 1192 | 863 |
| FRANKLIN VIEW FARMS | 909 HO | 26906 | 1105 | 862 |
| DAVID BAIR | 100 HO | 25598 | 1054 | 861 |
| AMOS M. STOLTZFUS | 47 HO | 27376 | 1106 | 861 |
| JOLAN & KATIE MARTIN | 95 HO | 28622 | 1101 | 861 |
| MELVIN STOLTZFUS | 57 HO | 26311 | 1073 | 860 |
| DAVID RAY HOOVER | 80 HO | 27337 | 1034 | 860 |
| KENNETH L. WENGER | 73 HO | 26643 | 1177 | 858 |
| JOSEPH E. CONLEY | 63 HO | 26822 | 968 | 858 |
| GRAYWOOD FARMS | 846 HO | 27313 | 971 | 857 |
| HILLSIDE MEADOWS FARM | 191 HO | 26304 | 1134 | 855 |
| JESSE MARTIN | 192 HO | 26257 | 1035 | 853 |
| JOHN M. GLICK | 76 HO | 26990 | 1064 | 850 |
| INDIAN RUN | 86 HO | 27042 | 1044 | 849 |
| CHARLES & ELAINE CRA | 336 HO | 26774 | 1125 | 848 |
| MELVIN K. & ESTHER ST | 56 HO | 26611 | 1096 | 847 |
| FARMLAND DAIRY | 52 HO | 25805 | 1132 | 847 |
| JOHN & LAROSE HOOV | 69 HO | 26773 | 1085 | 847 |
| OMAR A. & MARY F. STOL | 53 HO | 27587 | 1109 | 843 |
| DANIEL K. SMUCKER | 54 HO | 26446 | 1092 | 842 |
| BALMER BROTHERS | 483 HO | 26885 | 1079 | 841 |
| WHISTLING GLEN FARMS | 159 HO | 25461 | 790 | 841 |
| EMANUEL J. KING | 57 HO | 28052 | 1139 | 840 |
| DARYL SENSENIG | 82 HO | 26409 | 1087 | 838 |
| ELAM KING | 53 HO | 26588 | 1012 | 838 |
| MELODY LAWN FARMS | 77 HO | 27332 | 1134 | 837 |
| PAUL & MARK MILLER | 123 HO | 26386 | 1035 | 837 |
| AMOS F. LAPP, JR. | 62 HO | 28240 | 1188 | 837 |
| BURNELL R. GOOD | 70 HO | 26011 | 1109 | 836 |
| OMAR K. MILLER | 60 HO | 26488 | 1043 | 834 |
| JOHN S. BEILER | 65 HO | 27923 | 1234 | 833 |
| AMOS S. KING, JR. | 79 HO | 25693 | 1036 | 832 |
| DAVID WISE | 57 HO | 25407 | 1028 | 832 |
| MELVIN GLICK | 49 HO | 27441 | 976 | 831 |
| LYNN ROYER | 250 HO | 25429 | 1056 | 830 |
| JAMES S. ZIMMERMAN | 80 HO | 25843 | 1056 | 830 |
| STEVE K. BEILER | 69 HO | 25890 | 1058 | 829 |
| G. ANTHONY ZIMMERMAN | 91 HO | 26395 | 1045 | 829 |
| SMYRNA PINE | 52 HO | 27150 | 1112 | 829 |
| CHRISTIAN LANDIS | 51 HO | 25699 | 1041 | 827 |
| JOHN F. STOLTZFUS | 44 HO | 26225 | 1055 | 826 |
| SUNBEAM DAIRY | 132 HO | 26227 | 991 | 825 |
| DANIEL Z. ESH | 62 HO | 26510 | 1048 | 824 |
| SYLVAN J. OBERHOLTZER | 177 HO | 25155 | 1087 | 823 |
| SUNNYBROOK DAIRY FARM | 118 HO | 24797 | 1080 | 823 |



| | | | | | | | | | |
|------------------------|--------|-------|------|-----|-----------------------|--------|-------|------|-----|
| MELVIN F. ZOOK | 63 HO | 24993 | 945 | 770 | LEVI GLICK | 46 HO | 23606 | 999 | 710 |
| OREGON DAIRY FARM LLC. | 61 HO | 24218 | 974 | 770 | AMOS B. FISHER | 41 HO | 23187 | 929 | 710 |
| JAMES B. HOOVER | 47 HO | 24230 | 982 | 768 | FLOWING SPRING FARM | 56 HO | 22305 | 887 | 704 |
| JOHN K. STOLTZFUS | 58 HO | 24882 | 986 | 767 | MARK F. BEILER | 46 HO | 22691 | 863 | 702 |
| PAUL B. ZIMMERMAN, JR. | 150 HO | 23469 | 984 | 767 | JERLYN MARTIN | 65 HO | 20704 | 906 | 702 |
| BENUEL L. FISHER | 71 HO | 23258 | 1026 | 767 | STEPHEN & NAOMI ZO | 64 HO | 21651 | 917 | 699 |
| JOHN & MARY FISHER | 41 HO | 24202 | 952 | 766 | JOSEPH K. FISHER | 38 XX | 21182 | 894 | 699 |
| JOHN K. BEILER | 77 HO | 24430 | 1044 | 765 | AMOS S. BEILER | 63 HO | 22975 | 934 | 698 |
| HENRY B. KING | 41 HO | 23630 | 981 | 765 | ALVIN F. LAPP | 50 HO | 22707 | 846 | 698 |
| ELMER S. MILLER | 52 HO | 25523 | 985 | 764 | JOSEPH B. LAPP | 57 HO | 22339 | 892 | 698 |
| BENJAMIN B. LAPP | 45 HO | 24757 | 969 | 764 | ELMER B. LAPP | 63 HO | 22231 | 910 | 698 |
| LEVI J. LANTZ | 60 HO | 24597 | 917 | 764 | BEN GLICK | 43 HO | 21449 | 877 | 695 |
| GOLF VIEW | 56 HO | 25113 | 1054 | 761 | FERLIN ZEISET | 89 HO | 22070 | 911 | 692 |
| AARON S. GLICK | 42 HO | 24176 | 975 | 761 | LANDYSHADE DAIRY FARM | 390 HO | 23082 | 917 | 689 |
| AMOS J. GLICK | 48 HO | 24080 | 974 | 760 | SAMUEL K. ESH | 64 HO | 21376 | 877 | 684 |
| LIME-MEADOW FARM | 63 HO | 24629 | 938 | 758 | PIN-OAK FARM | 52 HO | 22289 | 858 | 682 |
| DAVID J. KULP | 55 BS | 21084 | 948 | 758 | JOHN B. ESH | 44 HO | 22183 | 867 | 682 |
| LAMAR ZEISET | 62 HO | 24528 | 1022 | 756 | AARON K. KING | 39 HO | 21348 | 869 | 681 |
| AMOS J. STOLTZFUS | 75 HO | 23715 | 926 | 755 | JOHN GLICK | 44 HO | 22583 | 906 | 677 |
| JOHN K. KING | 51 HO | 24261 | 964 | 753 | ELMER KING | 42 HO | 22366 | 844 | 676 |
| LEVI E. STOLTZFUS | 52 HO | 23827 | 946 | 752 | ISAAC D. KING | 35 HO | 20353 | 818 | 675 |
| CHRISTIAN E. KING | 45 HO | 24602 | 955 | 750 | GIDEON STOLTZFUS | 53 HO | 21794 | 852 | 674 |
| DANIEL GLICK | 55 HO | 24273 | 935 | 750 | BALMER BROTHERS | 99 JE | 18730 | 956 | 670 |
| JACOB B. FISHER | 43 HO | 24477 | 971 | 750 | CHRIST S. MILLER | 56 HO | 21436 | 873 | 670 |
| SAMUEL K. FISHER | 60 HO | 24664 | 925 | 748 | AMOS M. STOLTZFUS | 40 HO | 21726 | 814 | 668 |
| LINFORD ZEISET | 57 HO | 24549 | 944 | 748 | MERVIN B. ESCH | 64 HO | 22282 | 860 | 666 |
| AMOS RIEHL | 65 HO | 24607 | 962 | 747 | CURT & PSUCHE HOFFMA | 65 XX | 19986 | 867 | 664 |
| AMMON Z. MARTIN | 36 HO | 24179 | 913 | 747 | BENUEL SMUCKER | 51 HO | 21538 | 1044 | 664 |
| JONATHON GLICK | 68 HO | 24652 | 980 | 747 | LOREN BRUBAKER | 33 HO | 21349 | 803 | 663 |
| ENOS E. STOLTZFUS | 93 HO | 22995 | 1021 | 745 | MERVIN S. ZOOK | 55 JE | 18503 | 970 | 662 |
| JOHN MARK BEILER | 46 HO | 24295 | 956 | 745 | ELMER Z. BLANK | 44 JE | 19027 | 937 | 657 |
| BC ACRES | 50 XX | 22479 | 879 | 744 | EVERGREEN VALLEY FARM | 74 HO | 20714 | 786 | 655 |
| LITTLE STREAM | 60 HO | 24322 | 902 | 743 | HENRY NOLT | 36 HO | 20628 | 867 | 655 |
| SYLVAN F. KING | 55 HO | 24370 | 975 | 743 | JOHN F. STOLTZFUS | 48 JE | 16989 | 851 | 651 |
| BENUEL S. STOLTZFUS | 54 HO | 24290 | 1019 | 742 | AMMON, JR. & MARY LA | 18 XX | 18136 | 804 | 649 |
| MER-LAND FARM | 63 HO | 22741 | 996 | 741 | ALVIN LEE STOLTZFUS | 53 HO | 20037 | 814 | 639 |
| RANDY LAPP | 20 HO | 23226 | 923 | 741 | DANIEL F. BEILER | 58 JE | 18289 | 889 | 636 |
| LEVI K. STOLTZFOOS | 69 HO | 24347 | 1117 | 739 | STEVEN B. KING | 25 XX | 20940 | 853 | 636 |
| ELI L. STOLTZFUS | 42 HO | 23415 | 936 | 739 | LEVI LAPP | 64 HO | 19748 | 778 | 634 |
| BENJAMIN Z. BEILER | 48 HO | 24146 | 942 | 739 | MELVIN S. ZOOK | 50 HO | 21744 | 809 | 634 |
| DAVID J. KULP | 43 HO | 21898 | 887 | 738 | JACOB M. PETERSHEIM | 54 HO | 21829 | 743 | 626 |
| RYAN E. ZEISET | 94 HO | 23512 | 949 | 738 | SAMUEL KING | 59 HO | 19516 | 804 | 626 |
| LEADERCREEK HOLSTEIN | 65 HO | 22045 | 883 | 738 | HENRY B. ESH | 49 HO | 21251 | 815 | 621 |
| AMOS L. LAPP | 60 HO | 23427 | 905 | 735 | KEVIN STOLTZFUS | 40 GU | 18247 | 1056 | 617 |
| JONAS B. & MATTIE L. | 37 HO | 22904 | 907 | 734 | MARK LEID | 74 HO | 19430 | 811 | 616 |
| WARREN Z. SENSENIG | 63 HO | 24361 | 1014 | 733 | MARLIN & DOREEN BECK | 107 HO | 19628 | 792 | 613 |
| ABNER K. KING | 50 HO | 23437 | 969 | 733 | AMOS J. FISHER | 48 HO | 19756 | 814 | 613 |
| ISAAC B. LAPP | 45 HO | 23691 | 1030 | 733 | JACOB L. KING, JR. | 58 HO | 20549 | 802 | 610 |
| AMOS KING | 84 HO | 22399 | 949 | 732 | GREEN BANK ACRES | 44 HO | 19915 | 786 | 606 |
| JACOB BEILER | 44 HO | 23356 | 899 | 732 | ZIMMERMAN ACRES LLC. | 61 HO | 19453 | 762 | 606 |
| JOSEPH S. ESH | 44 HO | 24429 | 947 | 731 | J. DAVID HOSTETTER | 44 HO | 19030 | 761 | 603 |
| ENOS F. KING | 85 HO | 23389 | 926 | 731 | MEADOW RUN FARMS | 37 JE | 16756 | 818 | 603 |
| HARTLAND DAIRY | 60 HO | 22455 | 878 | 731 | ELMER K. BEILER | 46 HO | 19308 | 780 | 598 |
| JOHN ERVIN STOLTZFUS | 50 HO | 23878 | 954 | 729 | NATHAN & LUCY NOLT | 35 HO | 19056 | 864 | 597 |
| JOSEPH E. & MARY K. | 67 HO | 22986 | 901 | 728 | AMOS N. FISHER | 38 HO | 19155 | 817 | 595 |
| JOHN M. STOLTZFUS | 91 HO | 24373 | 933 | 727 | DANIEL S. ESH | 42 HO | 20420 | 956 | 593 |
| DAVID N. FOX | 36 HO | 22557 | 894 | 727 | SAMUEL J. STOLTZFUS | 45 HO | 19222 | 746 | 585 |
| KURTZ DAIRY FARM | 84 HO | 22913 | 929 | 727 | HENRY L. GLICK | 47 HO | 19025 | 743 | 583 |
| DANIEL & LINDA BEILE | 66 HO | 24442 | 892 | 725 | GIDEON E. KING | 45 HO | 18528 | 758 | 574 |
| HOMESTEAD HOLSTEINS | 50 HO | 22751 | 892 | 725 | AMOS F. ESH | 53 JE | 16236 | 780 | 572 |
| JOSEPH R. ZIMMERMAN | 72 HO | 23127 | 920 | 724 | MEADOWVIEW JERSEYS | 66 JE | 15937 | 731 | 562 |
| GALEN C. MARTIN | 62 HO | 22959 | 886 | 723 | DAVID B. FISHER | 39 HO | 17797 | 716 | 559 |
| OMAR Z. ESH | 57 HO | 25899 | 977 | 722 | J. DAVID HOSTETTER | 46 HO | 16904 | 732 | 554 |
| WEEPING-WILLOW HOLST | 61 HO | 22954 | 921 | 721 | SAMUEL S. LANTZ | 40 HO | 18545 | 719 | 554 |
| PAUL WEAVER | 146 HO | 22163 | 956 | 721 | LESTER MARTIN | 33 HO | 18068 | 688 | 548 |
| DENNIS H. FREY | 44 HO | 23078 | 911 | 719 | SAMUEL E. KING | 54 HO | 17375 | 690 | 544 |
| DAVID K. STOLTZFUS | 60 HO | 23409 | 954 | 719 | THOMAS ARROWSMITH | 54 JE | 14230 | 777 | 535 |
| KENNETH HIGH | 70 HO | 22561 | 909 | 716 | ELI B. ZOOK | 46 XX | 17055 | 664 | 535 |
| GARBER DAIRY FARM | 168 XX | 21424 | 905 | 716 | DAVID Z. HORST | 40 HO | 16544 | 634 | 515 |
| SAMUEL K. GLICK | 73 HO | 23235 | 959 | 715 | DAVID S. FISHER | 42 HO | 16575 | 663 | 503 |
| IVAN E. KING | 39 HO | 23723 | 930 | 715 | | | | | |

HERDS WITH A RHA SCC LESS THAN 200,000

| | | | | | | | |
|------------------------------|----|-----|------|-----------------------------|----|-----|-----|
| PAUL & MARK MILLER | HO | 37 | 123 | MELVIN S. ZOOK | HO | 125 | 50 |
| CENTRAL MANOR DAIRY LLC. | XX | 44 | 12 | LINDEN HOLLOW FARM | HO | 126 | 96 |
| KEVIN BALMER | XX | 45 | 125 | ELAM K. KING | HO | 126 | 58 |
| AMOS B. FISHER | HO | 46 | 41 | JOEL & PRISCILLA REIFF | HO | 127 | 42 |
| TRI-WILLOW FARMS | HO | 57 | 97 | KENNETH L. WENGER | HO | 127 | 73 |
| RIVERSIDE ACRES | HO | 59 | 65 | STEPHEN KING | HO | 127 | 48 |
| CHRIST E. STOLTZFUS | HO | 63 | 55 | FOX MEADOWS FARM LLC. | HO | 128 | 89 |
| JOHN B. STOLTZFUS | HO | 66 | 78 | MEADOW RUN FARMS | JE | 128 | 37 |
| SUNNYBROOK DAIRY FARMS LLC. | HO | 70 | 118 | SPRING VALLEY DAIRY LLC. | HO | 129 | 91 |
| DAVID Z. BEILER | HO | 74 | 60 | CHRIST S. MILLER | HO | 129 | 56 |
| CHRIST E. & SADIE KING | HO | 75 | 51 | ELI L. STOLTZFUS | HO | 129 | 42 |
| SYLVAN J. OBERHOLTZER | HO | 78 | 177 | SAMUEL K. FISHER | XX | 129 | 38 |
| QUIET VALLEY FARM | BS | 78 | 25 | CARDINAL HOLLO FARM | HO | 129 | 76 |
| MERVIN Z. HOOVER | HO | 80 | 60 | AMOS B. KING, JR. | HO | 130 | 75 |
| CHRISTIAN LANDIS | HO | 81 | 51 | STEPHEN B. LAPP | HO | 131 | 49 |
| HENRY Z. BEILER | HO | 82 | 54 | JOHN & LAROSE HOOVER | HO | 131 | 69 |
| DANIEL RAY FISHER | HO | 85 | 46 | MEADOW SPRING FARM | HO | 132 | 527 |
| SUNBEAM DAIRY | HO | 87 | 132 | ELAM B. MILLER | HO | 132 | 56 |
| JOLAN & KATIE MARTIN | HO | 88 | 95 | JONATHAN S. STOLTZFUS | HO | 133 | 66 |
| DANIEL GLICK | HO | 89 | 55 | BENJAMIN Z. BEILER | HO | 133 | 48 |
| DANIEL & MARY STOLTZFUS | HO | 90 | 64 | MERVIN B. ESCH | HO | 134 | 64 |
| GOLF VIEW | HO | 91 | 56 | JAY & JOANNE WISE | HO | 135 | 80 |
| AMMON Z. MARTIN | HO | 92 | 36 | STEPHEN M. STOLTZFUS | HO | 135 | 55 |
| PAUL B. ZIMMERMAN, JR. | HO | 94 | 150 | ELMER KING | HO | 135 | 42 |
| HARTLAND DAIRY | HO | 94 | 60 | JOHN ERVIN STOLTZFUS | HO | 135 | 50 |
| GARY R. MARTIN | HO | 95 | 93 | WEAVER HOMSTEAD FARM LLC. | HO | 136 | 208 |
| JOHN M. BURKHOLDER | HO | 96 | 142 | NATHAN J. HORNBERGER | HO | 136 | 93 |
| PAUL DAVID GARMAN | HO | 96 | 57 | DANIEL K. SMUCKER | HO | 136 | 54 |
| DALE L. ZIMMERMAN | HO | 97 | 91 | DAVID M. ZOOK | HO | 136 | 72 |
| CENTRAL MANOR DAIRY LLC. | HO | 99 | 213 | MELVIN L. STOLTZFUS | HO | 137 | 74 |
| JEFF SENSENIG | HO | 100 | 86 | MAPLEHOF FARM, INC. | HO | 139 | 134 |
| BRUBAKER FARMS | HO | 101 | 1429 | LOREN BRUBAKER | HO | 139 | 33 |
| OREGON DAIRY FARM LLC. | HO | 101 | 61 | JACOB E. KAUFFMAN | HO | 140 | 79 |
| LESTER MARTIN | HO | 101 | 33 | STONER DAIRY FARM LLC. | HO | 140 | 447 |
| SAMUEL J. STOLTZFUS | HO | 103 | 45 | JOSEPH E. CONLEY | HO | 141 | 63 |
| IRVIN FARM | HO | 103 | 83 | AMOS F. LAPP, JR. | HO | 142 | 62 |
| CURVIN MARTIN | HO | 104 | 79 | BENUEL S. STOLTZFUS | HO | 142 | 45 |
| CLINTON L. SENSENIG | XX | 105 | 202 | AMOS L. LAPP | HO | 142 | 60 |
| WEEPING-WILLOW HOLSTEINS | HO | 105 | 61 | LEVI K. STOLTZFOOS | HO | 143 | 69 |
| MEADOW VISTA FARM | HO | 106 | 861 | ENOS F. KING | HO | 143 | 85 |
| SPRING MEADOW DAIRY | HO | 106 | 82 | LEVI LAPP | HO | 143 | 64 |
| DAVID K. STOLTZFUS | HO | 107 | 60 | EDWIN N. ZEISET | HO | 145 | 78 |
| RANCKSTEAD FARM LLC. | HO | 109 | 92 | SKY VIEW DAIRY | HO | 145 | 165 |
| JOHN K. BEILER | HO | 110 | 77 | AMOS S. KING, JR. | HO | 147 | 79 |
| BENUEL S. STOLTZFUS | HO | 110 | 54 | JOHN F. STOLTZFUS | HO | 147 | 44 |
| GLENN H. MARTIN | HO | 110 | 58 | ERIC MARTIN | HO | 148 | 133 |
| JONAS B. & MATTIE L. MILLER | HO | 110 | 37 | JOHN D. KING, JR. | HO | 148 | 51 |
| CHARLES FARMS, INC. | HO | 111 | 398 | DANIEL S. ESH | HO | 149 | 42 |
| STEVE K. STOLTZFUS | HO | 111 | 56 | AMOS M. STOLTZFUS | HO | 150 | 40 |
| MELVIN GLICK | HO | 111 | 49 | DAVID WISE | HO | 150 | 57 |
| EAGLE VALLEY FARM | HO | 112 | 53 | WALNUT RUN FARM | HO | 151 | 919 |
| DAVID J. KULP | HO | 113 | 43 | GAP-HOLLOW FARM | HO | 153 | 61 |
| EZRA S. HORST, JR. | HO | 113 | 122 | FOUR CORNER FARM | HO | 153 | 72 |
| JESSE MARTIN | HO | 113 | 192 | ANDREW L. WEAVER | HO | 153 | 105 |
| MELVIN MILLER | HO | 114 | 78 | JONATHAN S. STOLTZFUS | HO | 155 | 76 |
| JACOB L. KING, JR. | HO | 115 | 58 | AMOS M. STOLTZFUS | HO | 155 | 47 |
| MELVIN L. BEILER | HO | 116 | 70 | ENOS E. STOLTZFUS | HO | 156 | 93 |
| DAVID S. KING | HO | 117 | 67 | LARRY LEINBACH | HO | 156 | 53 |
| AMOS J. STOLTZFUS | HO | 117 | 41 | BURNELL R. GOOD | HO | 157 | 70 |
| FARMLAND DAIRY | HO | 117 | 52 | PIN-OAK FARM | HO | 157 | 52 |
| STEPHEN GLICK | HO | 117 | 86 | JOHN S. BEILER | HO | 157 | 65 |
| GIDEON STOLTZFUS | HO | 119 | 53 | DANIEL L. STOLTZFOOS | HO | 157 | 49 |
| MARVIN LEE ZIMMERMAN | HO | 119 | 114 | JAMES S. ZIMMERMAN | HO | 158 | 80 |
| ELI B. ZOOK | XX | 119 | 46 | JACOB M. PETERSHEIM | HO | 159 | 54 |
| ELAM KING | HO | 119 | 53 | BC ACRES | XX | 161 | 50 |
| MELVIN K. & ESTHER STOLTZFOO | HO | 122 | 56 | LEVI E. STOLTZFUS | HO | 161 | 52 |
| LINFORD ZEISET | HO | 122 | 57 | J. DAVID HOSTETTER | HO | 162 | 44 |
| LAMAR ZEISET | HO | 124 | 62 | DANIEL G. FISHER | HO | 162 | 57 |
| SAMUEL K. FISHER | HO | 124 | 60 | DANIEL F. BEILER | JE | 162 | 58 |
| LEONARD N. FOX | HO | 124 | 57 | MELVIN STOLTZFUS | HO | 163 | 57 |
| ZIMMERMAN ACRES LLC. | HO | 124 | 61 | OMAR K. MILLER | HO | 164 | 60 |
| MOUNT VIEW ACRES | HO | 125 | 53 | MELODY LAWN FARMS | HO | 165 | 77 |
| DAVID N. FOX | HO | 125 | 36 | FERLIN ZEISET | HO | 165 | 89 |
| SAMUEL K. GLICK | HO | 125 | 73 | JOHN F. STOLTZFUS | JE | 165 | 48 |
| SMYRNA PINE | HO | 125 | 52 | OMAR A. & MARY F. STOLTZFUS | HO | 166 | 53 |
| JOHN GLICK | HO | 125 | 44 | AMOS RIEHL | HO | 167 | 65 |



| | | | |
|-----------------------------|----|-----|------|
| GALEN C. MARTIN | HO | 167 | 62 |
| JACOB E. SMUCKER | HO | 167 | 76 |
| MATT AUMENT | HO | 168 | 72 |
| HILLSIDE MEADOWS FARM LLC. | HO | 169 | 191 |
| ELMER S. MILLER | HO | 169 | 52 |
| JOHN & MARY FISHER | HO | 169 | 41 |
| OMAR KAUFFMAM | HO | 170 | 67 |
| A. MICHAEL KING | HO | 170 | 49 |
| ALVIN N. SHIRK | HO | 171 | 53 |
| INDIAN RUN | HO | 171 | 86 |
| DARYL SENSENIG | HO | 172 | 82 |
| TOM NAUMAN | HO | 172 | 71 |
| SAMUEL KING | HO | 172 | 59 |
| BENJAMIN S. FISHER | XX | 173 | 55 |
| MERVIN S. ZOOK | JE | 174 | 55 |
| AMOS F. ESH | JE | 174 | 53 |
| RYAN E. ZEISSET | HO | 175 | 94 |
| AMOS J. GLICK | HO | 176 | 48 |
| AMOS KING | HO | 177 | 84 |
| JONATHON GLICK | HO | 178 | 68 |
| SAMUEL LAPP | HO | 178 | 51 |
| GIDEON E. KING | HO | 179 | 45 |
| GRAYWOOD FARMS | HO | 180 | 846 |
| AMMON, JR. & MARY LANTZ | HO | 180 | 61 |
| MARLIN & DOREEN BECKER | HO | 180 | 107 |
| LANDYSHADE DAIRY FARMS LLC. | HO | 183 | 390 |
| STEVE K. BEILER | HO | 183 | 69 |
| CHRIST FISHER | HO | 183 | 53 |
| MARK F. STOLTZFUS | HO | 183 | 54 |
| ELAM E. MILLER | HO | 185 | 53 |
| BALMER BROTHERS | HO | 186 | 483 |
| FERNCREST FARM | HO | 186 | 77 |
| ISAAC D. KING | HO | 186 | 35 |
| NEIL M. GOOD | HO | 186 | 125 |
| J. RANDALL SENSENIG | HO | 186 | 103 |
| LEVI J. LANTZ | HO | 186 | 60 |
| MELVIN L. RIEHL | HO | 187 | 37 |
| SWEIGART FARMS LLC. | HO | 187 | 526 |
| JOHN K. KING | HO | 187 | 51 |
| THOMAS ARROWSMITH | JE | 189 | 54 |
| L. MICHAEL WEAVER | HO | 189 | 82 |
| ELMER J. BEILER | HO | 189 | 69 |
| DANIEL F. BEILER | HO | 191 | 65 |
| KREIDER DAIRY FARMS | HO | 192 | 2092 |
| DAVID Z. HORST | HO | 192 | 40 |
| MEADOW VIEW FARM | HO | 192 | 56 |
| JACOB B. FISHER | HO | 193 | 43 |
| MARK LEID | HO | 194 | 74 |
| JOSEPH S. ESH | HO | 196 | 44 |
| ALVIN S. BEILER | HO | 196 | 60 |
| ELMER Z. BLANK | JE | 197 | 44 |
| J. & D. MARTIN | HO | 198 | 101 |
| HENRY B. KING | HO | 198 | 41 |
| ISAAC B. LAPP | HO | 198 | 45 |
| BEN B. STOLTZFUS, JR. | HO | 199 | 80 |

| | | | |
|---|--------|-------|-----------|
| Lebanon County | | | |
| FURNACE HILL HOLSTEINS | 460 HO | 30608 | 1268 1001 |
| IRON VALLEY FARM | 120 HO | 29177 | 1281 947 |
| KEN-RE HOLSTEINS | 193 HO | 28995 | 1167 934 |
| HAMMERCREEK HOLSTEINS | 87 HO | 29026 | 1213 931 |
| MARLIN M. HIGH, JR. | 105 HO | 29179 | 1174 920 |
| GALEN ZIMMERMAN | 81 HO | 28247 | 1191 900 |
| JACOB STOLTZFUS | 88 HO | 27621 | 1087 884 |
| NATHAN NOLT | 80 HO | 27106 | 1095 871 |
| CURVIN LAUVER | 101 HO | 27749 | 1124 866 |
| VILLA DALE FARM LTD. | 175 XX | 25879 | 1145 839 |
| STONE-HAUS HOLSTEINS | 90 HO | 25706 | 1061 831 |
| NATHANIEL & KAYLA REIFF | 131 HO | 25392 | 1018 824 |
| JERYL LEHMAN | 59 HO | 25581 | 1010 824 |
| CHRISTIAN & KORIN GINGRIC | 67 HO | 24955 | 1030 821 |
| LARRY NEWSWANGER | 155 HO | 25381 | 1099 805 |
| ELCO HOLSTEINS | 149 HO | 25450 | 1016 797 |
| JAMES HUBER | 65 HO | 25169 | 1002 793 |
| BRIAN L. MARTIN | 61 HO | 23442 | 1007 789 |
| AUSTIN ZIMMERMAN | 103 HO | 24757 | 1025 781 |
| WILLARD & RACHEL HORNIN | 184 HO | 22785 | 904 721 |
| LEVI L. ZOOK | 63 HO | 22390 | 971 706 |
| AMMON LAPP | 60 HO | 18790 | 784 600 |
| HERDS WITH A RHA SCC LESS THAN 200,000 | | | |
| NATHAN NOLT | HO | 73 | 80 |
| JACOB STOLTZFUS | HO | 77 | 88 |
| HAMMERCREEK HOLSTEINS | HO | 94 | 87 |

| | | | |
|----------------------------|----|-----|-----|
| MARLIN M. HIGH, JR. | HO | 95 | 105 |
| CHRISTIAN & KORIN GINGRICH | HO | 95 | 67 |
| GALEN ZIMMERMAN | HO | 98 | 81 |
| VILLA DALE FARM LTD. | XX | 107 | 175 |
| NATHANIEL & KAYLA REIFF | HO | 109 | 131 |
| LARRY NEWSWANGER | HO | 118 | 155 |
| LEVI L. ZOOK | HO | 120 | 63 |
| WILLARD & RACHEL HORNING | HO | 125 | 184 |
| IRON VALLEY FARM | HO | 127 | 120 |
| AUSTIN ZIMMERMAN | HO | 127 | 103 |
| FURNACE HILL HOLSTEINS | HO | 130 | 460 |
| KEN-RE HOLSTEINS | HO | 130 | 193 |
| CURVIN LAUVER | HO | 144 | 101 |
| JERYL LEHMAN | HO | 153 | 59 |
| STONE-HAUS HOLSTEINS | HO | 177 | 90 |
| JAMES HUBER | HO | 177 | 65 |

| | | | |
|---|--------|-------|----------|
| Lycoming County | | | |
| COGAN SKY FARM | 225 HO | 25402 | 1042 814 |
| ADAM & LISA SONNEN | 65 HO | 22554 | 943 729 |
| MATT & ALICIA DERR | 167 JE | 19554 | 976 729 |
| HERDS WITH A RHA SCC LESS THAN 200,000 | | | |
| ADAM & LISA SONNEN | HO | 100 | 65 |
| COGAN SKY FARM | HO | 130 | 225 |

| | | | |
|---|--------|-------|----------|
| Mifflin County | | | |
| DAVE & JEN STUCK | 114 HO | 27158 | 1096 860 |
| SHAWN SMOKER | 143 HO | 24958 | 1063 825 |
| TIMOTHY KAUFFMAN | 127 HO | 25010 | 1025 785 |
| BILL & SUE SELLERS | 39 XX | 17305 | 745 584 |
| HERDS WITH A RHA SCC LESS THAN 200,000 | | | |
| TIMOTHY KAUFFMAN | HO | 127 | 127 |
| BILL & SUE SELLERS | XX | 144 | 39 |

| | | | |
|---|--------|-------|----------|
| Montgomery County | | | |
| JONATHAN & KAREN S | 64 HO | 26353 | 993 835 |
| LALISA HOLSTEINS | 143 HO | 21495 | 1011 687 |
| HERDS WITH A RHA SCC LESS THAN 200,000 | | | |
| W. B. SAUL HIGH SCHOOL | XX | 197 | 15 |

| | | | |
|---|-------|-------|---------|
| Northampton County | | | |
| KEYSTONE FARM | 64 HO | 26061 | 968 831 |
| HERDS WITH A RHA SCC LESS THAN 200,000 | | | |
| KEYSTONE FARM | HO | 149 | 64 |

| | | | |
|---|--------|-------|----------|
| Perry County | | | |
| TROUT BROS. DAIRY | 793 HO | 29540 | 1204 980 |
| GERALD L. MARTIN | 63 HO | 29446 | 1165 939 |
| BRUVALLEY FARM | 331 HO | 29345 | 1219 904 |
| MERLIN & KRISTA MA | 66 HO | 27396 | 1085 894 |
| CARL R. HORST | 94 HO | 28539 | 1103 889 |
| DARYL MARTIN | 116 XX | 25441 | 1040 820 |
| CINDY & JOE COMP | 94 HO | 25613 | 1043 809 |
| JAY MARTIN | 155 HO | 24192 | 974 752 |
| JOEL HURST | 69 JE | 16483 | 835 627 |
| HERDS WITH A RHA SCC LESS THAN 200,000 | | | |
| BRUVALLEY FARM | HO | 99 | 331 |
| GERALD L. MARTIN | HO | 114 | 63 |
| CARL R. HORST | HO | 116 | 94 |
| CINDY & JOE COMP | HO | 133 | 94 |
| DARYL MARTIN | XX | 136 | 116 |

| | | | |
|---|--------|-------|----------|
| Schuylkill County | | | |
| JAY IVAN NEWSWANGER | 95 HO | 30109 | 1197 944 |
| STEPHEN & BRIANNA BOND | 92 HO | 27486 | 1121 867 |
| DWAYNE NEWSWANGER | 204 HO | 26076 | 1181 845 |
| HERDS WITH A RHA SCC LESS THAN 200,000 | | | |
| DWAYNE NEWSWANGER | HO | 75 | 204 |
| STEPHEN & BRIANNA BOND | HO | 154 | 92 |
| JAY IVAN NEWSWANGER | HO | 158 | 95 |

| | | | |
|---|-------|-------|----------|
| Snyder County | | | |
| TIM & LAURIE HACKENBERG | 43 HO | 24869 | 1022 798 |
| JOHN DAVID MARTI | 43 HO | 20521 | 848 667 |
| JORDAN ABBY EWING | 57 HO | 20435 | 761 647 |
| JOSEPH BEIDLER | 99 XX | 13984 | 685 522 |
| HERDS WITH A RHA SCC LESS THAN 200,000 | | | |

| | | | |
|-------------------------|----|-----|----|
| JORDAN ABBY EWING | HO | 142 | 57 |
| TIM & LAURIE HACKENBERG | HO | 186 | 43 |

| | | | |
|---|--------|-------|-----------|
| Somerset County | | | |
| DIVIDING RIDGE FARM | 801 HO | 33704 | 1302 1058 |
| HILLCREST SAYLOR DAIRY | 763 HO | 27874 | 1110 858 |
| LATUCH BROTHERS | 263 HO | 25043 | 1175 818 |
| HARLAN HIGH | 114 HO | 24832 | 991 790 |
| BERVERALON FARM | 208 HO | 24406 | 982 771 |
| DOVAN FARMS | 710 HO | 24457 | 961 756 |
| JASON BAUGHMAN | 49 XX | 21530 | 974 755 |
| ERNAJEAN HOLSTEINS | 60 HO | 22184 | 913 741 |
| JOHN BRENNEMAN | 31 JE | 16752 | 842 605 |
| PHILIP PETERSHEIM | 42 JE | 16444 | 848 600 |
| JOSEPH & RACHEL ZOOK | 24 XX | 16173 | 748 568 |
| HERDS WITH A RHA SCC LESS THAN 200,000 | | | |
| HARLAN HIGH | HO | 94 | 114 |
| JOSEPH & RACHEL ZOOK | XX | 163 | 24 |
| ERNAJEAN HOLSTEINS | HO | 172 | 60 |
| BERVERALON FARM | HO | 173 | 208 |
| JASON BAUGHMAN | XX | 175 | 49 |

| | | | |
|---|--------|-------|---------|
| Susquehanna County | | | |
| VANDERFELTZ HOLSTEIN | 198 HO | 25077 | 988 813 |
| JO-SAN FARMS, INC. | 54 HO | 23120 | 867 731 |
| VANDERFELTZ HOLSTEIN | 241 JE | 17779 | 840 679 |
| ROBERT REYAN | 92 HO | 20429 | 874 669 |
| HERDS WITH A RHA SCC LESS THAN 200,000 | | | |
| JO-SAN FARMS, INC. | HO | 114 | 54 |
| BOB KLIM | XX | 115 | 10 |
| VANDERFELTZ HOLSTEIN-JERSEY | HO | 168 | 198 |
| BOB KLIM | HO | 187 | 46 |

| | | | |
|---|--------|-------|----------|
| Tioga County | | | |
| KREGER FARMS | 76 HO | 27960 | 1062 886 |
| NICK MUSSHAFEN | 30 HO | 25288 | 1009 836 |
| DAN & JESSICA SLAYMAKER | 166 HO | 24674 | 959 793 |
| ESBERN DAIRY FARMS | 89 HO | 24897 | 973 782 |
| DAVE METZLER | 132 HO | 24681 | 1046 780 |
| WALTER & JUDITH HACK | 109 HO | 24393 | 985 758 |
| CHATHAM VALLEY HOL. | 82 HO | 23749 | 970 741 |
| ROGER ALEXANDER | 75 JE | 19895 | 987 722 |
| GOODVIEWHILL FARM | 94 HO | 22497 | 892 710 |
| MATT & TAYLOR SAMPSO | 61 HO | 21744 | 862 685 |
| K & K HOLSTEINS | 103 HO | 23362 | 792 671 |
| SHORT HILL FARMS | 69 HO | 19911 | 834 638 |
| TIMOTHY P. WOOD | 90 HO | 20433 | 838 629 |
| HULTZ HAVEN FARM, INC. | 107 HO | 20275 | 768 619 |
| BRYAN CLEVELAND | 65 JE | 16734 | 809 612 |
| LUKE SHUEY | 60 HO | 17125 | 711 566 |
| CLIFFORD BRACE | 74 HO | 18177 | 707 555 |
| HERDS WITH A RHA SCC LESS THAN 200,000 | | | |
| BRIAN & YVONNE ZERBY | JE | 93 | 42 |
| KREGER FARMS | HO | 106 | 76 |
| DAVE METZLER | HO | 126 | 132 |
| BRYAN CLEVELAND | JE | 129 | 65 |
| NICK MUSSHAFEN | HO | 138 | 30 |
| ESBERN DAIRY FARMS | HO | 154 | 89 |
| CHATHAM VALLEY HOL. | HO | 157 | 82 |
| DAN & JESSICA SLAYMAKER | HO | 159 | 166 |
| K & K HOLSTEINS | HO | 167 | 103 |
| GOODVIEWHILL FARM | HO | 176 | 94 |

| | | | |
|------------------------|--------|-------|----------|
| Union County | | | |
| DAVID OBERHOLTZER | 48 HO | 29180 | 1115 901 |
| MEADOW POND FARM | 55 HO | 27640 | 1131 879 |
| ELMER ZIMMERMAN | 52 HO | 28373 | 1124 872 |
| ALAN C. KALER | 43 HO | 27614 | 1048 863 |
| JARED DAUBERT | 138 HO | 25386 | 997 832 |
| MARTIN DREISBACH | 84 HO | 25190 | 1074 820 |
| STEVEN & ESTHER MARTIN | 56 HO | 26683 | 949 804 |
| AARON E. ZIMMERMA | 50 HO | 25972 | 1065 790 |
| WILSON REIFF | 71 HO | 25607 | 954 789 |
| BROCK & AMANDA SAYLOR | 46 XX | 24025 | 1028 783 |
| JOHN I. MARTIN | 61 HO | 24240 | 944 765 |

| | | | |
|---------------------|-------|-------|---------|
| ESBERN-OM HOLSTEINS | 55 HO | 23684 | 989 754 |
| NATHAN MARTIN | 56 HO | 23227 | 930 735 |
| CHRIS H. BURKHOLDER | 51 HO | 23766 | 947 727 |
| NORMAN W. REIFF | 55 HO | 23272 | 891 715 |
| MARK A. MAPES | 64 XX | 15865 | 648 517 |

| | | | |
|---|----|-----|-----|
| HERDS WITH A RHA SCC LESS THAN 200,000 | | | |
| BROCK & AMANDA SAYLOR | XX | 51 | 46 |
| STEVEN & ESTHER MARTIN | HO | 88 | 56 |
| JARED DAUBERT | HO | 88 | 138 |
| ALAN C. KALER | HO | 106 | 43 |
| MEADOW POND FARM | HO | 127 | 55 |
| WILSON REIFF | HO | 132 | 71 |
| AARON E. ZIMMERMAN | HO | 133 | 50 |
| ESBERN-OM HOLSTEINS | HO | 154 | 55 |

| | | | |
|---|-------|-------|----------|
| Washington County | | | |
| JOHN E. MARCHEZAK | 15 XX | 26127 | 1040 820 |
| JOHN E. MARCHEZAK | 16 JE | 16582 | 830 603 |
| JOHN E. MARCHEZAK | 20 GU | 15183 | 704 511 |
| HERDS WITH A RHA SCC LESS THAN 200,000 | | | |
| JOHN E. MARCHEZAK | XX | 164 | 15 |
| JOHN E. MARCHEZAK | JE | 179 | 16 |
| JOHN E. MARCHEZAK | GU | 197 | 20 |

| | | | |
|----------------------------|-------|-------|---------|
| Westmoreland County | | | |
| RALPH FRYE, JR. | 64 HO | 24302 | 920 805 |

| | | | |
|---|--------|-------|---------|
| York County | | | |
| GLEN DAUGHERTY | 120 HO | 24478 | 935 794 |
| DAVID PETERSHEIM | 56 HO | 23245 | 873 690 |
| STEVEN R. SMUCKER | 55 HO | 22203 | 913 688 |
| HICKORYMEA FARM | 147 HO | 20969 | 896 673 |
| JESSE & BARB DRUCK | 133 HO | 18412 | 767 622 |
| JESSE & BARB DRUCK | 26 HO | 16940 | 744 592 |
| HERDS WITH A RHA SCC LESS THAN 200,000 | | | |
| HICKORYMEA FARM | HO | 157 | 147 |

MARYLAND

| | | | |
|-----------------------|--------|-------|---------|
| Carroll County | | | |
| ARBAUGH S. FLOWING SP | 465 HO | 23076 | 960 726 |

| | | | |
|---|--------|-------|----------|
| Cecil County | | | |
| LEONARD & VERNON HORST | 250 HO | 25271 | 1064 830 |
| GIDEON & KATE ESH | 54 HO | 25214 | 1071 756 |
| RONALD UNDERWOOD | 123 HO | 24288 | 982 746 |
| CHESAPEAKE GOLD FARM | 35 HO | 22042 | 910 697 |
| CHESAPEAKE GOLD FARM | 65 HO | 21894 | 901 693 |
| CHESAPEAKE GOLD FARM | 47 XX | 20137 | 893 667 |
| RONALD UNDERWOOD | 13 BS | 17368 | 785 559 |
| HERDS WITH A RHA SCC LESS THAN 200,000 | | | |
| GIDEON & KATE ESH | HO | 129 | 54 |
| LEONARD & VERNON HORST | HO | 199 | 250 |

| | | | |
|---|--------|-------|---------|
| Garrett County | | | |
| DELVIN MAST | 198 HO | 22343 | 851 689 |
| HERDS WITH A RHA SCC LESS THAN 200,000 | | | |
| DELVIN MAST | HO | 137 | 198 |

| | | | |
|---|--------|-------|----------|
| Harford County | | | |
| MATT & JULIE YARRING | 111 HO | 25684 | 1136 864 |
| ANDREW KAMYSZEK | 119 HO | 23269 | 956 741 |
| JAMES ARCHER | 206 HO | 18945 | 759 600 |
| HERDS WITH A RHA SCC LESS THAN 200,000 | | | |
| ANDREW KAMYSZEK | HO | 124 | 119 |

2024 PA Holstein Convention Ticket Order Form

Friday, February 9, 2024

11:30am – 12:30pm Buffet lunch No. _____ at \$27.00 = \$ _____

7:00pm Dinner with Speech Winner Presentations & Adult Awards No. _____ at \$40.00 = \$ _____

Saturday, February 10, 2024

9:00am – 2:00pm Farm Tours No. _____ at \$30.00 = \$ _____
Band Queen Farm and Burk Stead Farm, lunch provided

11:30am – 12:30pm Boxed Lunch No. _____ at \$18.00 = \$ _____

2:00pm – 4:00pm Junior Fun Activity No. _____ at \$40.00 = \$ _____
Snowtubing at Montage Mountain Resorts, release form required.

6:30pm Pre-Sale Meal No. _____ at \$35.00 = \$ _____

Sunday, February 11, 2024

7:30am Breakfast and Awards Program No. _____ at \$25.00 = \$ _____

Convention T-Shirts (Adult Size)
 _____ small _____ medium
 _____ large _____ x-large _____ xx-large
Order Total \$ _____

Ticket orders must be received by **Friday, January 12, 2024**

Name(s) _____ Junior Age(s) _____

Address _____

County _____

Phone (____) _____ E-mail: _____

(ticket order conformation will be emailed)

If a junior, adult chaperone: _____

Send Ticket Order Form with Check Payable to: "Pennsylvania Holstein Association"
Please put "2024 Convention" in the memo

c/o Rosalie Zagainylo
 169 Knorrs Hill Rd.
 Berwick, PA 18603
 570-764-3621

Pa. Holstein breeders

STATE COLLEGE, Pa. — The Northeast District of the Pennsylvania Holstein Association (PHA) invites adult and Junior members to Scranton as "Together We Soar in 2024" for the state convention. It will be held at the Hilton Scranton in Scranton, starting on Friday, February 9, with the PHA Holstein Board of Directors meeting and 111th annual meeting of the Association. Throughout the afternoon, junior contests will be ongoing and the dairy bar will be open.

The convention banquet on Friday evening will feature the winning Junior speech presentations as well as adult award winners of the Hall of Fame, Pioneer Memorial, Distinguished Supporter and Distinguished Young Breeder awards. The evening will wrap up with the Junior fun auction with items donated by Holstein breeders and businesses to benefit Pennsylvania Junior Holstein activities.

Saturday will feature a full day of contests for Junior members as well as farm tours to Ban-Queen Farm and Burk Stead Farm. Juniors will also have the opportunity to go snow-tubing in the afternoon.

The Pennsylvania State Convention Sale is set for Saturday evening, February 10, and will start after a buffet dinner at the hotel. The sale will be a multi-media video and picture sale, with no live cattle on site. Consignments are being finalized, and sale information will be highlighted on the Association's Facebook page.

The convention will conclude on Sunday, February 11, with the annual awards breakfast. Junior contest award winners, Junior and adult members who have excelled in the show ring with their breeding programs, and adult mem-

2024 Pennsylvania Holstein Convention Schedule of Events Friday, February 9 – Sunday, February 11

Thursday, February 8

3 p.m.-6 p.m. Executive Committee Meeting

Friday, February 9

- 9 a.m. Registration opens
- 10 a.m. Dairy Bar opens
- 10 a.m. Southcentral & Southeast Caucus
- 10 a.m. Resolutions Committee Meeting
- 11 a.m. Dairy Jeopardy Contest Starts
- 11:30 a.m. Prepared Public Speaking Contest
- 11:30 a.m.-12:30 p.m. Lunch buffet
- 1 p.m. Board of Directors & 111th Annual Mtg.
- 1:30 p.m. DJM Interviews
- 3 p.m. Folding Display & Photo Contest
- 4 p.m. Pa. Junior Holstein Annual Mtg.
- 5 p.m. Dairy Bowl Seeding Test
- 5:30 p.m. Jr. Executive Meeting
- 7 p.m. Convention Banquet
- 9 p.m. Jr. Fun Auction

Saturday, February 10

- 7 a.m. Registration & dairy bar open
- 8 a.m.-4 p.m. Extemporaneous Speech Contests
- 8:30 a.m.-11:30 a.m. Dairy Bowl – Jr. Division
- 8:30 a.m.-4 p.m. Man on the Street Contest
- 9:30 a.m. Bus departs for farm tours
- 10 a.m.-2 p.m. Farm tours
- 11:30 a.m.-12:30 p.m. Boxed lunch
- 12:45 p.m.-3:30 p.m. Dairy Bowl – Sr. Division
- 1:30 p.m. Bus departs for snow tubing
- 2 p.m.-4 p.m. Junior Fun Activity (snow tubing)
- 5 p.m. Dairy Bowl Finals
- 6:30-7:30 p.m. Pre-Sale Meal
- 7:30-9 p.m. Convention Sale
- 8 p.m.-11:45 p.m. Junior Dance

Sunday, February 11

7:30 a.m. Awards Breakfast (for all)



USDA Discrimination Financial Assistance Program

APPLY FOR FINANCIAL ASSISTANCE BEFORE JANUARY 13TH!

The United States Department of Agriculture's (USDA) Discrimination Financial Assistance Program (DFAP) is a limited-time program that Congress authorized in Section 22007 of the Inflation Reduction Act in August 2022 for the purpose of providing financial assistance to ranchers, farmers, and forest landowners determined to have experienced discrimination in USDA lending programs prior to January 1, 2021.

KEEPSEAGLE PARTICIPANTS ARE ELIGIBLE TO PARTICIPATE BASED ON THE SAME CLAIM(S).



DEADLINES
 January 13, 2024: DFAP Application Submission Deadline
 DFAP APPLICATION AVAILABLE AT <https://22007apply.gov/>

Learn how YOU can get involved

indianag.org

invited to convention

bers who have earned herd award recognitions through Holstein USA will all be recognized. Room reservations are due by Tuesday, January 9, and can be made by calling the Hilton Scranton at 570-343-3000 or online at [www.hilton.com/en/attend-my-event/pahol-](http://www.hilton.com/en/attend-my-event/paholsteinassoc2024conf/)

steinassoc2024conf/ Ticket order forms are due Friday, January 12. Full schedule, ticket order form, and room reservation information is printed on these pages and also available online at www.paholsteins.com

PHA District meeting set for Dec. 30

STATE COLLEGE, Pa. — The South-Central District of the Pennsylvania Holstein Association will hold a meeting on Saturday, December 30, to seek nominations to serve on the Executive Committee and begin the planning for the 2025 state convention. The meeting will start at 11 a.m. at Hoss's Steak & Sea House, Mechanicsburg, (at the intersection of the Pennsylvania Turnpike Exit 236 and Route 15). Glenn Brake will complete his 3-year term on the Executive Committee. Any Pennsylvania Holstein Association member from Adams, Cumberland, Dauphin, Franklin, Lancaster, Lebanon, Perry and York counties can make nominations. Up to three nominees can be submitted from this meeting to the State Directors for election to the Executive Committee at the 2024 Pennsylvania Holstein Convention set for February 9-11, 2024 at the Hilton Scranton in Scranton. (Please see list of PHA Board of Directors from the South Central Region, 2011 - pres-

ent, by county, below. The group will also discuss the 2024 South-Central Championship Show and any other issues members may wish to address.

2011-2023 PHA Board of Directors South Central Region

- Adams:** Robby Sebright, Joshua Sanders, George Sebright
- Cumberland:** Harry Thompson, Aaron Cornman
- Dauphin:** Mike Miller
- Franklin:** Marcus Martin, Glenn Brake, Justin Burdette
- Lancaster:** Jeff Bender, Richard Mellinger
- Lebanon:** Daniel Brandt, Donald Krall, Gary Lentz
- Perry:** Irene Osborne, Karen Diffenderfer, Amber Smith
- York:** Roy Thompson, Daphne Lang, Charlene Walker

For lodging reservations, contact:
Hilton Scranton
 100 Adams Ave., Scranton, PA
 Phone 570-343-3000
<https://www.hilton.com/en/attend-my-event/paholsteinassoc2024conf/>
***Indicate you are with PA Holstein Convention**
 Room reservations are due by **January 9**
 Lodging Rates \$119.00 plus tax

Junior Convention Rules

- 1) All juniors must be in their rooms by 12:30 a.m. on Friday and 1:00 a.m. on Saturday.
- 2) Doors will be open at all times when mixed company is in the room.
- 3) **ABSOLUTELY NO DRUGS OR ALCOHOL WILL BE USED OR CONSUMED.**
- 4) Upon registration, each junior will name a chaperone that is responsible for his or her action. If you do not name one, there will be chaperones at the hotel.
- 5) Anyone found destroying hotel property will be charged for damages.
- 6) The Convention Committee will not be responsible for anyone leaving the Convention facilities without permission of the Convention Chaperone.
- 7) Any violators of these rules will not be eligible for any state awards for a period of one year, and they will be sent home at the parents' cost.
- 8) All attendance of registered participants, attendees, exhibitors, sponsors and guests ("you") at Pennsylvania Holstein Association (PHA) and Pennsylvania Junior Holstein Association (PJHA) conventions, conferences, meetings or related activities ("Events") constitutes an agreement between you and PHA/PJHA regarding the use and distribution of your image, including but not limited to your name, voice and likeness ("Image"). By attending the Events, you acknowledge and agree that photographs, video and/or audio recordings may be taken of you and you grant PHA/PJHA the right to use, in perpetuity, your Image in any electronic or print

distribution, or by other means hereinafter created, both now and in the future, for any lawful purpose as determined by PHA/PJHA. For any questions or concerns about the use of your Image, please contact PHA/PJHA at contact@paholsteins.com

The above named have permission to participate in PA Junior Holstein Convention activities. The undersigned parent(s) understand that they are the primary insurance providers for this activity and acknowledge that they have adequate medical coverage. Should an accident occur and you cannot be reached, your child will be transported to the nearest hospital. The undersigned parent(s) gives permission to attending doctors to provide emergency care as deemed necessary. The parent(s) understand the Pennsylvania Holstein Association, activity planners and Association employees are not responsible for any injury to my son or daughter. It is the responsibility of the participant to act in a safe and responsible manner.

Parent's Signature

Emergency Phone Number

Cell Phone Number of Parent or Guardian

E-mail address

Junior's Name

Junior's Name

Junior's Name



Sire The Need*
Animal Analysis Associates

aAa Weeks®
Michael McCaffrey, Analyzer

Mobile: 315-447-4699 • Mike.McCaffrey@aAaWeeks.com
 58 James Street, Homer, NY 13077 • www.aAaWeeks.com

Important notice to all readers and advertisers:

There will be no **FARMSHINE** published on December 29 to allow our staff to enjoy their families at Christmas. We will resume our weekly schedule on January 5.

Keystone Concrete Products, Inc.
 477 E. Farmersville Rd.
 New Holland, Pa. 17557



(717) 355-2361 - corporate office
 (717) 355-9548 - fax
keystoneconcreteproducts.com

NEED THAT BUNKER? CALL ASAP TO RESERVE YOUR WALLS!!!



Power Systems Electric Inc.

Emergency Generator Systems & Service
 885 South Railroad Street, Myerstown, Pa 17067

Sales, Service, & Rentals
 Providing service for most brands



Maintenance Programs

New & Used Gen Sets, Transfer Switches, PTO Gens.



24 HR EMERGENCY SERVICE

info@psegenerators.com
www.psegenerators.com

For all your generator needs call (717)933-5617



Secure Cover Dealer

Financing Available

Agricultural Pre-cast Products Available:



Straight Back J-Bunk



Slant Back J-Bunk



H-Bunk



Precast Concrete Box Culverts



Cattle "Waffle Slat"
 Moisture cured, 8000 psi concrete
 New 8" thick for Heavier Equipment



Cattle Guards Avail. 12' & 16' Lengths

T & L Shaped Precast walls 8'6", 12'6" & 16' high

Maine's ag trade show slated

AUGUSTA, Maine — The Department of Agriculture, Conservation and Forestry's (DACF) Agricultural Trades Show returns to the Augusta Civic Center, 76 Community Drive, from January 9-11. Doors open daily at 9 a.m., with no entry fee.

While some conference sessions may require pre-registration and a nominal fee, most do not. Overall, the wealth of certifica-

tion credits, training workshops, and daily updates on food and farming make the ATS a must-attend event.

Sample conferences and sessions:

- Selecting Soil Health Practices to Improve Nutrient Management - Jan. 9, 2 p.m.
 - Connecting Farmers and Buyers - Jan. 10, 10 a.m.
 - Farm Labor Listening Session - Jan. 10, 3 p.m.
- Visit www.maine.gov/dacf/agtradesshow for show news, schedules, participant directory, and venue map.



MUELLER
DAIRY FARM EQUIPMENT

To Our Customers and Friends
We Extend Our Best Wishes
for a Happy Holiday Season
and a Successful New Year.

MUELLER

Like us on Facebook! www.Facebook.com/MuellerMilk

Fisher & Thompson, Inc.

Leola • 717-656-3307 Roaring Spring • 814-224-0070
Belleville • 717-935-7422 Somerset • 814-444-8502
Troy • 570-297-2012 Bethel • 717-656-3307

Priest's Refrigeration

Greencastle
717-643-1057

Rufus Brubaker Refrigeration

Manheim
866-665-3525

Regional Manager

Vic Leininger PA, NY, MD, DE, NJ
Quarryville, PA 417-872-5715

'GT' Thompson slams GAO report

WASHINGTON, D.C. — Following the publication of a one-sided report on the federal crop insurance program by the Government Accountability Office (GAO), House Committee on Agriculture Chairman Glenn "GT" Thompson issued the following statement:

"The recent Government Accountability Office (GAO) report on crop insurance isn't worth the paper it is printed on. GAO uses inconsistent performance metrics to make an apples to oranges comparison of crop insurance returns versus those of other lines of insurance.

Further, they completely ignore the benefits of Federal crop insurance, which is one of the most successful examples of a public-private partnership in existence. Farmers willingly pay significant premiums for crop

insurance coverage because it provides reliable assistance when disaster strikes. This timely indemnification doesn't just benefit farmers, it bolsters rural economies by ensuring that producers can pay back their lenders, retain their employees, and get back on their feet to farm again the following season."

"Finally, it is ironic that this report criticizing private sector delivery was published amidst the ongoing debacle of USDA's implementation of disaster aid for 2022 losses. Government delivery of aid is the alternative to the public-private partnership and I don't know of a single producer that would want to make that trade or a single taxpayer that would not ultimately regret upending the system we currently have."

USDA waives some report essentials

WASHINGTON, D.C. — The U.S. Department of Agriculture (USDA) has waived certain notice of loss requirements for 2023 for the Emergency Assistance for Livestock, Honeybees, and Farm-raised Fish (ELAP) and Livestock Indemnity Program (LIP). In an effort to streamline assistance to support access to critical 2023 natural disaster recovery assistance, USDA's Farm Service Agency (FSA) is waiving the requirement to submit ELAP or LIP notices of loss within a pre-determined number of days for 2023. Instead, producers

have the flexibility to submit 2023 notices of loss as soon as possible, once losses are realized, following a natural disaster event or no later than the established annual program application for payment deadlines for each program. FSA county committees are also being asked to re-evaluate 2023 ELAP and LIP late-filed notices of loss to determine if the waiver applies.

Farmers can find more details about USDA disaster assistance programs on farmers.gov or visit their local USDA Service Center.



CERTIFIED ORGANIC CATTLE WANTED

NICHOLAS MEAT LLC

Modern Meat Processor Paying a Premium
For Your Certified Organic Cattle

Purchasing on Dressed Weight and Grade Basis

Nicholas Meat LLC is an approved Certified Organic Meat Processor. We are looking to purchase all your Certified Organic Cattle. Customers can deliver cattle to the plant Monday through Friday 7 A.M. to 1:30 P.M. Nicholas Meat LLC has also established several collection points.

Cattle can be taken to:

Vintage Sales Stables, Inc.

3451-3457 Lincoln Highway East, Paradise, PA 17562
Every Thursday from 9 A.M. to 3 P.M.

Weikert Buying Station

721 Carrolls Tract Rd., Fairfield, PA 17320
Mondays from 9 A.M. to 4 P.M.

New N.W. Sales Company

2006 Mercer-New Wilmington Rd., New Wilmington, PA 16141
2nd and 4th Monday of each month.

Belleville Livestock Market

26 Sale Barn Lane, Belleville, PA 17004
Every Wednesday.

R&C Calf Farms, LLC

13071 Emerson Rd., Applecreek, OH 44606
Mon. -Thurs. 9 A.M. to 2 P.M. (Behind sale barn in Kidron)

Please bring a copy of your Organic Certificate with each shipment!

Please call the number below to inquire about these collection points or to schedule your sale of Certified Organic Cattle to Nicholas Meat, LLC.

NICHOLAS MEAT LLC

508 East Valley Road, Loganton, PA 17747
Please call Nicholas Meat LLC – 570-725-3511

Ken Main, noted Brown Swiss breeder, passed on at 78

COPAKE FALLS, N.Y. — Internationally renowned Brown Swiss breeder Lynn F. “Ken” Main, Sr., 78, died peacefully on November 27, with his family by his side. Son of the late Calvin and Ruth Main, he was born in Baldwinville, N.Y. in 1945.

Ken was the first dairyman to put grooves in concrete in free-stall barns. As a former hoof trimmer he saw the need, developed the technique and adapted the equipment to do this on farms across the country. His passion was dairy cows and he started Berkshire Valley Holsteins in 1977.

He had always dreamed of having a small Brown Swiss herd. That dream came true in 2002 when his partnership with Peter Vail

began. Elite Dairy became known internationally for breeding, selecting, and promoting an “Elite” herd. Ken was a “breeder and marketer extraordinaire,” noted Peter Vail.

Ken continued his passion in 2019 when he partnered with Dr. Kenny Jo Manion to establish Edge View Genetics at Elite Dairy II, where they continue to raise high-quality Brown Swiss.

Ken has significantly influenced the Brown Swiss in-



Ken Main

dustry; Elite has earned numerous Premier Exhibitor and Premier Breeder honors and many All-Americans and champions nationwide.

Ken was the recipient of the Brown Swiss Historical Association Master Breeder Award. He was also a member of the New York and National Brown Swiss associations. He was a great supporter of the local 4-H group, “Barn Buddies.”

Ken enjoyed his time at shows and looking for the

next best cow with his beloved fiancé, Marian. She had been by his side for 10-plus years. He was the beloved father to his son and daughters, and was cherished by his three grandchildren. He was predeceased by his wife of 46 years, Charlene.

Friends and family joined the Main family in celebrating Ken’s life at the Pond Restaurant in Ancramdale on Saturday, December 2. At the convenience of the family, Ken requested his ashes be spread over the farm, where we all know he would want to be.

In lieu of the flowers, contributions in memory of Ken can be made to the New York State Brown Swiss Association, NYSBSA 1048 Floodman Road, Palmyra, N.Y. 14522.

Innovation. Technology. Precision.

- Sickle bars available up to 9 ft.
- Other models available in ground drive, PTO and engine drive.

5% off all goods bought and paid for by Dec. 20

Double cutting sickle bar cuts like scissors instead of a knife.

The cleaner cut promotes faster regrowth and eliminates plugging.

Cultivators - Horse Drawn & 3 pt. Crop Rollers from 4 ft. to 60 ft.

I & J mfg. (717) 442-9451
10 S. New Holland Road, Suite 2
Gordonville, PA 17529

SUPER SHAVINGS SAVINGS

Premium Fine Flake Pine Shavings

Opens to 6 Cu. Ft. (Dust Free) **\$6⁰⁰** /bale
Skid Lots Only (59 bales per skid)

Dairy farmers no. 1 choice in bedding

Delivery Available • Wholesale half and full loads

Premium Medium Flake Pine Shavings

2.5 Cu. Ft. (Expands to 10.5 Cu. Ft.) **\$6³⁰**

Skid Lots Price (650 Cu. Ft. per skid) **\$6⁰⁰** /bale



1731 W. Main St., Ephrata, PA 17522
EphrataAgway.com
717-733-6593 • 800-379-0568
Mon.-Thur. 7:30-6 • Fri. 7:30-7 • Sat. 7:30-4

Failure to close – you’ve got it

Your liners never close below the teat end during the rest phase. For those who got to visit us at WDE you were able to see that in the demonstration showing liners opening and closing. For those who missed it you can see closure photos at <https://tridentpulsation.com/liner-closure>.

Now that your lying eyes have seen the harsh reality of what the teats of your cows experience a few hundred times a day getting slammed, does it matter? Well only if you are concerned about teat canal health and the forceful shoving of bacteria up that damaged/sore teat canal. How much of that damage occurred with the cow you loaded on a truck yesterday to go to McDonalds?

Try it in your parlor – call us to get a demo unit for your parlor to experience faster milking with increased production.

Your dealer will say it doesn’t work, we will guarantee that a demo in your parlor will show otherwise.

Trident@TridentPulsation.com

TridentPulsation™ System
607-849-3880 607-759-1037

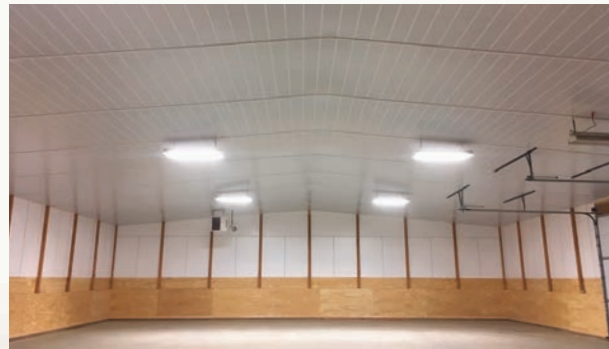
Triply Ceilings

in a freestall barn provides a bright, quiet, and moderated climate cows love!



- Proven durability
- Any type of building
- Sound-reducing
- Reflects radiant energy
- Non-corrosive
- Effective bird control
- Washable, easy-to-clean
- Brighter ambient light

The alternative to conventional ceilings; at a fraction of the cost.



For Agricultural - Industrial - Storage Garages - Shops - Steel Buildings, etc.



ceilings@midatlantic.biz

717-933-1316

Masterpiece Genetics offers high-ranking Guernsey bulls

CUMBERLAND, Md. — The December bull proofs once again put Masterpiece Genetics at the top of the Guernsey breed for a wide selection of bulls that offer strong genomic and daughter proofs from deep proven cow families and sire stacks, holding true to the motto of “Blending Beauty and Performance”.

Torpedo, a widely used bull, continues as the breed’s leading type sire and is tied as the No. 5 GPTI bull of the breed. He is positive on all production traits and the breeders with calves now on the ground continue to remark about the correctness of the calves. Available conventional and sexed, Torpedo is sired by London from three generations of Excellent high production cows from the Lang Haven herd in Wisconsin.

Andre continues to dominate the breed as the No. 1 Milk bull of the breed at a whopping +1277 lbs, and is also tied as the No. 5 GTPI bull and tied at No. 5 for Type at +1.1. A Novak out of the famous Sniders Gary Anjolee (EX-94), his



GMB14473 Lang-Haven London Torpedo-ET continues as the breed’s leading type sire. Semen from him and other Masterpiece Genetics bulls is available from Triple-Hil Sires distributors.

first three dams average 93 points and over 185,000 milk lifetime. He brings production without sacrificing type, and is available conventional and sexed.

Thor is the breed’s No. 1 Outcross bull, and tied for No. 1 UDC. Deeply bred Villa Crest on the top and bottom, he is from a 91-point cow with over 26,000 lbs. of milk. He leads the breed in fore udder improvement and udder depth and is + on DPR, and is available in conventional and sexed.

Lockley-P arrives as the first Masterpiece bull to hit the proven sire list in the top 10 PTI. He is a polled outcross bull that is a brother to London, out of the great Leora (EX) cow. His oldest daughter is now VG-88 CAN on her second lactation. With an impressive +2.1 DPR and +0.9 Type, his daughters are the modern kind for today’s commercial setting. Lockley-P and Nugent, a Legend x EX Prada who ranks near the top for strength, width and feet and legs, are ideal grazing sires. Nugent is available in both sexed and conventional.

Jack-Daniels-P, the polled son of Jazzy (EX- 95) continues to have daughters hitting the show ring including class winners at WDE and the All-American. With high customer satisfaction, and his first daughters calving in, expect to see many high scoring young cows to come, as he remains +1.1 on Type and tied at No. 4 FLC.

Michelangelo continues with high use as he remains the No. 5 Milk bull of the breed and +0.5 Type. A daughter topped the 2023 Blue Halter Sale at \$10,000 and his first daughters are just now calving in. They impress breeders with their great width from the muzzle, front end through the pins, while walking on strong feet with adequately set legs. Michelangelo is a Legend son from the great Marzipan (EX-94 CAN) and is available in conventional and sexed.

All Masterpiece Guernsey bulls are A2A2 and dams average 91.8 points (all Excellent and one is 89 at 2y). Masterpiece semen is concentrated at the maximum 40 million sperm per straw to improve conception. Semen is available for distribution by Triple-Hil Sires through its distributors. Inquiries can be made by contacting Masterpiece online at www.masterpiecegeneticsllc.com or by phone: 1-855-955-2100.

Morrissey Insurance

Congratulates Hailey Palmer

For Her Success At The 2023 Fulton County Fair!

Congratulations to all exhibitors and winners at the 2023 Fulton County Fair!



890 N. Reading Road
Ephrata, PA 17522
www.insuringyourfuture.com
800-422-8335

RUNNING LOW ON HIGH-OLEIC (PLENISH) BEANS?

We can now sell Plenish Flaked Toasted Beans directly to you!

Call for pricing & delivery info!

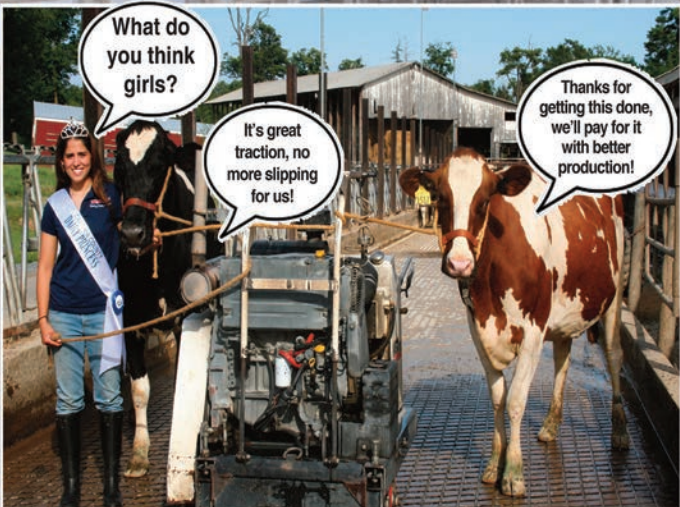


Toasted is Tastier!
(717) 355-BEAN (2326)
220 White Oak Road
New Holland, PA 17557

Concrete Grooving

Do your cows a favor...

...Keep Them on Their Feet!



Groove...

- Alleys - **down to 20" wide**
- Feedlots
- Holding areas
- Return lanes
- Palpation lanes
- **Anywhere you have slick concrete!**

Your results...

- Better Heat Detection
- Fewer injuries
- Increased milk production

Eli Fisher Construction
814-364-9361 • Centre Hall, PA

Is your water safe to drink?

Even water that "looks" good can be harmful to your health and your livestock

New technology water treatment

- Save up to 50% in operating costs
- Less salt
- Less water for back wash



Iron Removal . . . Softener . . .

Nitrate Units . . . Water Neutralizer . . .

UV Lights . . . Reverse Osmosis . . .

Chlorine . . . Peroxide Applicators . . .

Available in 110 or 12V DC

OREGON Water Conditioning LLC
305 Quarry Road
Leola, PA 17540
(717) 656-8380

Whole milk clears biggest hurdle yet in marathon trek back to school menus

The groundswell of grassroots support for the choice of whole milk in schools has traveled a long road, and we've still got a patch to go.

There have been champions all along the way, and we need those champions to keep championing. Here, I'll mention just a few of the legislative champions, but there's also a bevy of people who've been working hard behind the scenes to get this bill over its first major hurdle.

Congressman G.T. Thompson, of course, is the author and champion of the Whole Milk for Healthy Kids Act, H.R. 1147. He worked hard and smart through four legislative sessions to get it over the finish line in the U.S. House of Representatives in an overwhelmingly strong bipartisan 330 to 99 vote Wed., Dec. 13.

Education Chair and Congresswoman Virginia Foxx has been a feisty champion, continually reminding her colleagues opposing it and pontificating about "enormous amounts of fat" that whole milk has only around 3.5% fat content. Her remarks were priceless during the hour-long debate on the House floor.

In addition to Ag Chair G.T. and Education Chair Foxx, Republicans speaking up for the bill included two from Wisconsin, Glenn Grothman and Derrick Van Orden, along with Mary Miller of Illinois, John Rose of Tennessee, Marc Molinaro of New York, and three from Pennsylvania: John Joyce, Lloyd Smucker, and Dan Meuser. The Republicans bringing amendments also had favorable words for the bill, more on that next week.

And to his credit, Jim Costa, the Democrat from California with dairy history coursing through his veins, stepped across the aisle to join the Foxx team of speakers supporting G.T.'s bill.

On the lighter side: Smucker mentioned speaking with his Lancaster County, Pennsylvania farmers and school officials and said: "They all agree... Let's support this bipartisan, bicameral and 'udderly' fantastic bill... Lets not 'skim' over the facts here, whole milk is truly the 'cream' of the crop in delivering these key vitamins and nutrients to growing children with impact for their long term health."

In one hour of floor debate, each side controls 30 minutes. The supporting side used 27, leaving 3 minutes for Chairman Foxx's closing remarks.

The opposition ran out of fuel, leaving 17 minutes unused on the table. Their leader, Education Ranking Member Bobby Scott of Virginia ran short of things to say other than pounding home the Dietary Guidelines for Americans (DGAs) as the undisputed kings of evidence based diets "to protect the health of our children."

Give me a break!

Troy Carter of Louisiana was nice enough, but his deal was trying to make the case that lactose intolerance was the real reason so much milk is thrown away, and why kids turn away from milk. He was pushing to add 'soymilk' as an at-large choice, seeking to position it as the real solution to cut down on school cafeteria waste and serve children.

No, that amendment was soundly defeated in the Rules Committee before coming to the House floor, but they pushed it anyway, and it went no-where. G.T. and Foxx reminded their colleagues that the process for alternative beverages was laid by the Obama administration and that students with a parental or doctor's note can have a nutritional alternative to milk, such as soy drink. But guess what? Not even a doctor's note will get a kid the choice of whole milk in school today -- unless he or she literally brings it in a packed lunch from home.



Milk Market Moos

by Sherry Bunting
agrite2011@gmail.com

The opposition kept going back to the DGAs being the sacred cow we should bow down to, and quoting from the Physicians Committee for Responsible Medicine (an arm of PETA) and the Center for Science in the Public Interest.

At the end of it all, the vote was strong and resounding for children, for science and for dairy farmers. I'm pouring a tall glass of whole milk this evening as I write this weekly column and offering a toast to the Whole Milk for Healthy Kids Act, which has cleared its biggest hurdle yet in the marathon trek back to school menus.

I'm thanking God and thanking all of the many people who have been and continue to be part of this effort. The work continues!

The strength of the vote sent a strong message to the Dietary Guidelines Advisory Committee preparing for its 4th meeting in the current 5-year DGA cycle.

It lights a fire under the identical Senate companion bill, S. 1957, for a vote that Senate Ag Committee staff say could come to their committee early next year.

It goes to the Senate with three amendments included, the most significant is the bipartisan one submitted by Republican Tom Tiffany of Wisconsin and Democrat Gabe Vasquez of New Mexico prohibiting USDA from banning flavored milk -- a proposal the Department was preparing to finalize at the elementary school level.

While the opposition rebuffed the stacks of scientific papers entered into the record, saying repeatedly: "Don't bring them here to us, to the politicians, take them to the DGAs, to the scientists."

I've got news for them. The DGA process is rigged. They've ignored the "preponderance of the scientific evidence" that has been uncovered and mounting for 10

Farmshine, Friday, December 15, 2023 -- 17

to 15 years due to how the questions for each cycle are formulated and how the research is 'screened' by USDA.

The People's House has spoken. The science can no longer be ignored. Now it's time to keep things moooving into the U.S. Senate to be sure the nutritious and delicious whole milk option can no longer be denied our children and grandchildren. Call or email your U.S. Senators to cosponsor S. 1957. It's important that they hear from all of us!

Milk futures plummet across the board

Milk futures plummeted across the board this week, following the corn and soymeal futures lower as dairy product futures also decline, except for future contracts on dry whey.

On the close Wed., Dec. 13, Class III milk futures for the next 12 months (Dec23-Nov24) averaged \$17.73, down 26 cents from the average for same 12 months a week ago. The Class IV contracts averaged \$19.31, down 21 cents from the previous week.

Spot dairy product prices mixed, lower

Dairy product futures and spot cash markets were mostly lower this week, erasing some of last week's gains. On the Class IV side, nonfat dry milk was the bright spot on the CME daily spot market, pegged Wed., Dec. 13 at \$1.1725/lb, up a penny on the day and up a penny on the week with one load changing hands. The spot butter price, however, dropped back under the \$2.50 mark, pegged at \$2.46/lb, down a whopping 21 cents from a week ago with a single load trading.

On the Class III side, 40-lb blocks were firm at \$1.60/lb with zero trades on Wednesday while futures trended lower, but the 500-lb barrel price was pegged at \$1.5175/lb, down 8 cents from a week ago with 3 loads trading. The dry whey price was pegged just a half-penny lower than a week ago at 39 1/2 cents/lb but nothing traded.

Thank You...

Cedar Crest Equipment

Thanks Each of Our Customers

for Your Business

During the Past Year,

We Value Your Patronage

Where Quality Is Affordable

| | | | | |
|---|--|---|---|---|
|  |  |  |  |  |
|  |  |  |  |  |
|  |  |  |  |  |
|  |  |  |  |  |
|  |  |  |  |  |



CEDAR CREST

Equipment LLC

www.cedarcrestequipment.com

61 Elco Drive, Myerstown, PA 17067
717.866.1888

1106 Ashville Rd, Quarryville, PA 17566
717.529.2782

11120 Shimpstown Rd, Mercersburg, PA 17236
717.660.0060

COP28: The world's biggest green mirage

Its official name is the “United Nations 28th Conference of the Parties on Climate Change,” or COP28 for short. Given the news from the two-week gathering in the desert near Dubai, however, a better name might be “Shifting Sands, Shifting Blame.”

For example, “A staggering 88,000 people are accredited” to attend the meeting, noted Barron’s on Dec. 4, with “another 400,000 registered to visit [its] ‘green zone.’”

Farm & Food File



By Alan Guebert

How do half a million people traveling to an isolated emirate on the edge of a Middle Eastern desert resemble anything close to green? Barron’s wondered the same thing. It titled its story on the inbound swarm of climate-change pilgrims “COP 28: Trying To Save The Planet In ‘Disneyland’ Crowds.”

Since Dubai is 3500 miles from London, almost everyone attending COP will arrive by air and many – too many – will arrive by private jet. That’s not a guess because at “COP27 in Egypt last year,” reported the website *The Conversation*, “around 315 private jet journeys took place.”

Most solo flyers were leaders in either politics or members of the – wink, wink – Do As I Say, Not As I Do Club. Many are members of both, of course.

For example, British Prime Minister Rishi Sunak, former British prime minister David Cameron, and Great Britain’s King Charles each arrived on their own private aircraft despite the fact that “from London to Dubai, private jet travel is 11 times more polluting than a commercial aircraft,” explained the one news service.

Each stepped off their carbon-burning magic carpet in time for “more than two-thirds of the nations in the world,” explained FERN’s Ag Insider, “representing ... 70 percent of global food production, [to sign] a declaration ... assigning agriculture and food systems a role in combating global warming.”

While today’s heavily industrialized crop, livestock, and poultry sectors (and their transnational corporate suppliers) have many environmental sins to atone for, making ag into a climate-change bogeyman is convenient buck passing.

At least that’s what the UN says on its climate change webpage: “Fossil fuels – coal, oil, and gas – are by far the

largest contributor to global climate change, accounting for over 75 percent of global greenhouse gas emissions and nearly 90 percent of all carbon dioxide emissions.”

Big Ag, however, is striving to live up to its dirtier relatives. As previously reported, one of its newest efforts centers on a network of definitely not-green pipelines carrying pressurized CO₂ from Midwestern ethanol plants to North Dakota’s frac oil fields to enhance crude oil recovery.

An even bigger hope is for ethanol to become a green, go-to aviation fuel. The cost for airlines to scrub their carbon-streaked reputation with this “sustainable aviation fuel,” or SAF, however, reported the Nov. 30 *New York Times*, is “potentially further damaging one of the nation’s more important resources: groundwater.”

This ag-based SAF idea is far from new. In 2008, British billionaire Richard Branson flew a Virgin Atlantic jetliner from London to Amsterdam using “fuel derived in part from palm oil and coconuts.”

Branson labeled the trip sustainable; critics labeled him nuts because had he used 100 percent coconut oil for the short, 220-mile flight, it “would have consumed three million coconuts.”

In late November, Virgin Atlantic tried again with “the world’s first 100% SAF flight” from London to New York. This time the jetliner’s SAF was cooking oil. Again, however, while the fuel might be considered “sustainable,” the math behind it was definitely finite.

“If every last drop” of the 600,000 tons of used cooking oil collected in the U.S. each year “were diverted to SAFs,” two British economists calculated, “it would meet at most 1% of America’s current aviation demand.”

Back at COP28, the president of Colombia, whose economy is based primarily on fossil fuel exports, offered a better, truly green idea: Stop “the expansion of coal, oil, and gas” and “reorient his nation away from such ‘poisons.’”

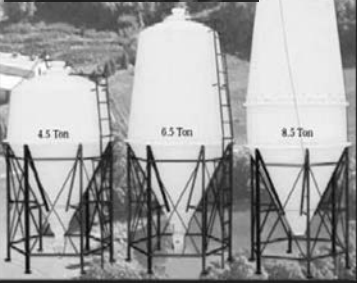
Wow, no hot air; how breathtakingly – and breath-giving-simple.

© 2023 ag comm

The Farm and Food File is published weekly throughout the U.S. and Canada. Past columns, supporting documents, and contact information are posted at farmandfoodfile.com

BARGAINS YOU CAN'T BEAT!

PolyDome Bulk Bins



PolyDome Bulk Bins are the perfect choice for handling high moisture corn, soybeans, and other granular materials. They are made of high density polyethylene which will never rust or corrode. PolyDome Bulk Bins will always remain clean and attractive. 0.9 ton to 8.5 ton capacity



Ulti-Mat All Rubber Cow Mattress Installation
Continuous Cow-Comfort – THE ONLY All Rubber Mattress that recovers to original shape after cow movement.

Superior Continuous Roll Rubber Flooring Available!
Up to 14.5' wide & 150' long. All NEW Virgin Rubber

Merry Christmas!

Thank you to our customers for their patronage in 2023!

We are now making repairs to any kind of mattresses!

Zartman Farms Cow Comfort Systems, Inc.

820 Hilltop Rd., Ephrata, PA 17522 • 717-733-1050

Northeast U.S. Distributor of Poly Dome Equipment • Wholesale & Retail
zartmanfarms@dejazzd.com • www.zartmanfarms.com

Wishing A Happy Holiday To You, Your Family & Loved Ones!



Turn Key Operations

- Calf Barns • Heifer Barns
- Tie Stall Barns • Free Stall Barns
- Bank Barns • Robotic Dairy Facilities
- Garages • Agricultural Buildings



White Horse Construction, Inc

ph: 610-593-5559 toll free: 888-385-2360

5080 Leike Rd, Parkesburg, Pa 19365

www.whcdairybarns.com

Markets

Livestock Auction

December 12, 2023
 Alfalfa 8.00
 Orchard 9.00
 Grass 3.25-8.25

Morrison's Cove Auction

December 11, 2023
 Grass 310
 Round bales 150-185
 Large square bales 130-250

Dewart Auction

Dewart, Pa.
 December 11, 2023
 Cattle: 159
 Slaughter cattle:
 Steers:
 Choice 170-174
 Select 163-170
 Holstein steers:
 Choice 129-130
 Select 111-118
 Heifers:
 Select 112
 Slaughter cows:
 PrmWht 65-75% lean 93-110
 Breakers 75-80% lean 84-93
 Boners 80-85% lean 79-88
 Lean 85-90% lean 60-79
 Feeder cattle:
 Steers:
 M/L-1-2 147-157
 Holstein steers:
 L-3 85-115
 Heifers:
 M/L-1-2 97-137
 Bulls:
 M/L-1-2 170
 Calves: 369
 Feeder calves:
 #1 Hol bulls 330-390
 #2 Hol bulls 275-340
 #3 Hol bulls 100-185
 Utility bulls 10-50
 #1 Hol heifers 170-260
 #2 Hol heifers 110-150

Greencastle Livestock

Greencastle, Pa.
 December 11, 2023
 Cattle: 638
 Slaughter cattle:
 Steers:
 HiCho & Prm 171-183
 Choice 154-176
 Select 141-157
 Holstein steers:
 HiCho & Prm 152-156
 Choice 143-151
 Select 120-138
 Heifers:
 HiCho & Prm 176-180
 Choice 155-173
 Select 135-153
 Slaughter cows:
 PrmWht 65-75% lean 102-110
 Breakers 75-80% lean 90-102
 Boners 80-85% lean 74-90
 Lean 85-90% lean 67-78
 Bulls:
 Y/G 1-2 95-117
 Feeder cattle:
 Steers:
 M/L-1-2 135-152.50
 Holstein steers:
 L-3 110-145
 Heifers:
 M/L-1-2 115-180
 Bulls:
 M/L-1-2 142.50-220
 Calves: 321
 Feeder calves:
 #1 Hol bulls 345-385
 #2 Hol bulls 290-330
 #3 Hol bulls 140-190
 Utility bulls 20-50

Morrison's Cove

Marrinsburg, Pa.
 December 11, 2023
 Cattle: 114
 Steers:
 Choice 152-160
 Good 105-150
 Heifers:
 Choice 145-155
 Good 95-140
 Cows:
 Util/Commercial 75-88
 Can/LoCut 75 & down
 Bulls Y/G #1 100-109
 Feeder Cattle:
 Steers:
 Bulls 100-170
 Heifers 85-160
 Heifers 75-162
 Calves: 103
 Standard 5-50
 Hol bulls 200-360
 Hol heifers 40-150

New Holland Auction

New Holland, Pa.
 December 11, 2023
 Cattle: 1140
 Slaughter cattle:
 Steers:
 HiCho & Prm 181-188
 Choice 174-180
 Select 167-173
 Holstein steers:
 HiCho & Prm 160-168
 Choice 149-152
 Select 130-138
 Heifers:
 HiCho & Prm 180-182
 Choice 168-171
 Select 160-166
 Slaughter cows:
 Breakers 75-80% lean 90-97
 Boners 80-85% lean 80-88.50
 Lean 85-90% lean 70-79
 Bulls:
 1-2 115-132
 Calves: 700
 Feeder calves:
 #1 Hol bulls 320-480
 #2 Hol bulls 275-375
 #3 Hol bulls 175-260
 Utility bulls 10-110

Wyalusing Livestock

Wyalusing, Pa.
 December 11, 2023
 Cattle:
 Canners .62-.71
 Boners .65-.74
 White cows .87-.94
 Feeders:
 300-500 lbs. .80-1.60
 501-600 lbs. .65-1.40
 Calves:
 84 lbs. 1.50-3.45
 94 lbs. 1.50-3.75

Hosking Sales

New Berlin, N.Y.
 December 11, 2023
 Cattle:
 Dairy cows .75
 Bone utility .90-1.08
 Canners & cutters .85-.95
 Easy cows .70 & down
 Steers over 1200 lbs. 1.25
 Bulls over 1100 lbs. 88-1.30
 Feeders:
 Dairy .65-1.10
 Bulls .89-1.23
 Heifers 1.10-1.20
 Bull calves top 3.50
 Heifer calves top 2.00

Livestock Auction

Hackettstown, N.J.
 December 12, 2023
 Calves .18-4.25
 Cows .51-1.05
 Steers 1.46-1.65
 Feeders .51-1.45

Bulls .108
 Heifers .50-1.50

Middleburg Auction

Middleburg, Pa.
 December 12, 2023
 Cattle: 335
 Feeder cattle:
 Steers:
 M/L-1 132-165
 M/L-2 120-145
 Holstein steers:
 L-3 97-110
 Heifers:
 M/L-1 132-157
 M/L-2 80-140
 Bulls:
 M/L-1 137
 M/L-2 88-155
 L-3 47-120
 Holstein heifers:
 L-3 90-107
 Slaughter cattle:
 Steers:
 HiCho & Prm 172-182
 Choice 160-177
 Select 138-156
 Holstein steers:
 HiCho & Prm 142-149
 Choice 123-138
 Select 101-119
 Heifers:
 HiCho & Prm 170-174
 Choice 164-169
 Select 138-146
 Slaughter cows:
 PrmWht 65-75% lean 92-96
 Breakers 75-80% lean 81-93
 Boners 80-85% lean 80-99
 Lean 85-90% lean 50-92
 Bulls:
 2-3 70-138
 Calves: 104
 Feeder calves:
 #1 Hol bulls 260-575
 #2 Hol bulls 100-410
 #3 Hol bulls 185-360
 Utility bulls 150-240
 #1 Hol heifers 125-350
 #2 Hol heifers 95-375

Morrison's Cove

Marrinsburg, Pa.
 December 11, 2023
 Cattle: 114
 Steers:
 Choice 152-160
 Good 105-150
 Heifers:
 Choice 145-155
 Good 95-140
 Cows:
 Util/Commercial 75-88
 Can/LoCut 75 & down
 Bulls Y/G #1 100-109
 Feeder Cattle:
 Steers:
 Bulls 100-170
 Heifers 85-160
 Heifers 75-162
 Calves: 103
 Standard 5-50
 Hol bulls 200-360
 Hol heifers 40-150

New Holland Auction

New Holland, Pa.
 December 11, 2023
 Cattle: 1140
 Slaughter cattle:
 Steers:
 HiCho & Prm 181-188
 Choice 174-180
 Select 167-173
 Holstein steers:
 HiCho & Prm 160-168
 Choice 149-152
 Select 130-138
 Heifers:
 HiCho & Prm 180-182
 Choice 168-171
 Select 160-166
 Slaughter cows:
 Breakers 75-80% lean 90-97
 Boners 80-85% lean 80-88.50
 Lean 85-90% lean 70-79
 Bulls:
 1-2 115-132
 Calves: 700
 Feeder calves:
 #1 Hol bulls 320-480
 #2 Hol bulls 275-375
 #3 Hol bulls 175-260
 Utility bulls 10-110

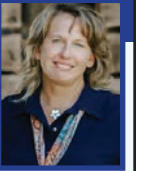
Wyalusing Livestock

Wyalusing, Pa.
 December 11, 2023
 Cattle:
 Canners .62-.71
 Boners .65-.74
 White cows .87-.94
 Feeders:
 300-500 lbs. .80-1.60
 501-600 lbs. .65-1.40
 Calves:
 84 lbs. 1.50-3.45
 94 lbs. 1.50-3.75

CDE DAIRY MARKETS & MANAGEMENT UPDATE

All prices — DEC. 13, 2023 — except where noted

JAYNE SEBRIGHT
 Executive Director, CDE
 717.346.0849
 jsebright@centerfordairyexcellence.org



On reflections and planning: Warren Buffet once said that “risk comes from not knowing what you’re doing.” While that statement seems blunt, it is true. In dairy farming, there is no way we can possibly predict every missed opportunity, every catastrophe, and every hardship we’ll face in any given year. We simply must navigate our business through the unpredictable the best we can.

That’s where risk management comes into play. This column often discusses milk markets, pricing, and price risk management options. But managing risks is much more complex than just managing the risks you have in milk prices and margins. There is a level of risk in every aspect of your business, and the best way to navigate that risk – or uncertainty – is through planning and reflection.

With another year ending, December is the perfect time to go through this process. All too often, as dairy farmers, we can be guilty of just moving from one day to the next without looking long term and planning for the future. It could be because we are so busy and immersed in the day to day, and it could partly be because planning can seem a little overwhelming and intimidating. But it doesn’t have to be.

December can be a great time to look back on the past year to celebrate what went well, take stock in what went wrong, and to think through what changes we can make to address any areas where improvements are needed in the coming year. That is all planning is – looking at the past to adjust for the future.

You can sit down and do this on your own or you can bring your key advisors around the table to offer their input into your thought process. Start by taking inventory of what happened in the past year. Where did you see improvements and where did you fall back? Where is milk production per cow compared to last year? What about your cull rate or your herd numbers? How are your replacements doing? What about feed quality and nutrition? Is milk quality improving or becoming more of an issue? What about components? Are accounts payable ticking up or down? What about your cost of production in general?

Write down where you see improvements and what areas are be-

coming more of an issue. Think through what you think could have led to the improvements you’ve seen and what could be attributed to the issues. Ask your nutritionist, veterinarian, accountant, or other key advisors for their input, too. Then write down what you think you need to keep doing and what changes you could make in the next year to build on the improvements you have seen and to solve the issues you’ve identified. It could be related to animal health, cow comfort, herd productivity, crop production, feeding strategies, farm profitability, or even employee-related matters. Anything that relates to your farm business is fair game to evaluate.

After you have reflected on the past year and written down the ideas you have for the coming year, prioritize those ideas. What is the most important thing you want to make sure you keep doing next year? What is the most important thing you need to change next year? Ask your key advisors what they think the most important things are. Based on your thought process and their input, rank your ideas to identify the top five things you are going to do to build on accomplishments and address any areas of improvement in the coming year.

After you have done that reflection and planning, don’t stop there. Make sure you take those top five things and put them in a place where they will continue to be in your line of sight throughout the coming year. Share them with your family and with your employees. Provide a copy to your key advisors. Ask them to remind you and help you stay accountable to that list. Going through the planning process is futile unless you implement what is in your plan.

There is also a lot we cannot control about our business – where milk prices will go, what the weather will do, what commodity prices will be like, what other hardships we may face. However, there is a lot we can control. That is what you can improve upon through reflection and planning. Having a plan that focuses on continual improvement can help you work through the uncertainty we face in the dairy business. The Center has grants and resources to help in this process. You can learn more by visiting centerfordairyexcellence.org or calling us at 717-346-0849.

Prices change daily. This market information is an example for educational purposes. The market data below are compiled weekly by Farmshine, via CME & USDA reports.

CME DAILY FUTURES & OPTIONS TRADING — DEC. 13, 2023 AT THE CLOSE

| *AVG = | DEC-23 | JAN-24 | FEB-24 | MAR-24 | APR-24 | MAY-24 | JUN-24 | JUL-24 | AUG-24 | SEP-24 | OCT-24 | NOV-24 | TREND | | | | |
|---|------------|------------|------------|------------|------------|------------|------------|------------|------------|------------|------------|------------|------------------------|--------|--------|---------|-------|
| CLASS III MILK FUTURES (\$/CWT) vs. wk ago: Dec23 down \$0.10, Jan-Apr24 down \$0.30-0.50, May-Nov24 down \$0.15-0.25 | 16.21 | 16.34 | 16.51 | 17.23 | 17.72 | 18.05 | 18.25 | 18.45 | 18.50 | 18.58 | 18.54 | 18.46 | 12-Month Avg. 17.73 ↓↓ | | | | |
| CLASS IV MILK FUTURES (\$/CWT) vs. wk ago: Dec23 dn \$0.15, Jan-Mar24 dn \$0.40-0.60, Apr-Aug24 dn \$0.10-0.20, Sep-Nov24 weak to dn \$0.05 | 19.08 | 18.52 | 18.60 | 18.86 | 19.23 | 19.40 | 19.50 | 19.70 | 19.82 | 19.94 | 20.05 | 19.95 | 12-Month Avg. 19.39 ↓↓ | | | | |
| CLASS III MILK (\$/CWT) OPTIONS — PUTS — Daily Strike Price / Premium | 16.25 0.08 | 16.25 0.30 | 16.50 0.56 | 17.25 0.74 | 17.75 0.84 | 18.00 0.91 | 18.25 1.04 | 18.50 1.07 | 18.50 1.13 | 18.50 1.15 | 18.50 1.17 | 18.50 1.35 | | | | | |
| MILK BASIS (\$/CWT) — 2017-22 PA BASIS AND AVG PA/NY/VT/OH — YOUR INDIVIDUAL BASIS WILL VARY (MAILBOX - CLASS 3) | PA 0.79 | 1.17 | 0.62 | 1.53 | 2.29 | 1.82 | 1.58 | 0.99 | 1.03 | 0.95 | 0.79 | 0.60 | | | | | |
| *AVG | 1.38 | 0.85 | 1.67 | 2.55 | 2.15 | 1.66 | 1.45 | 1.25 | 1.31 | 1.15 | 0.69 | 0.74 | | | | | |
| DMC OFFICIAL GROSS MARGINS per cwt(USDA All-Milk, com, alfalfa & ill. soybean, feed for ALL CLASSES of dairy cattle on farm) Updated with NEW prem. alfalfa feed cost | DMC | AUG-22 | SEP-22 | OCT-22 | NOV-22 | DEC-22 | JAN-23 | FEB-23 | MAR-23 | APR-23 | MAY-23 | JUN-23 | JUL-23 | AUG-23 | SEP-23 | *OCT-23 | TREND |
| | | 8.08 | 8.62 | 10.71 | 10.89 | 9.76 | 7.94 | 6.19 | 6.08 | 5.84 | 4.83 | 3.65 | 3.52 | 6.46 | 8.44 | *9.44 | ↑↑ |

| U.S. AVG PREMIUM ALFALFA & ALFALFA/GRASS HAY 20-22% CP - Source: USDA Monthly National Dairy Comprehensive Report | JUL-22 | AUG-22 | SEP-22 | OCT-22 | NOV-22 | DEC-22 | JAN-23 | FEB-23 | MAR-23 | APR-23 | MAY-23 | JUN-23 | JUL-23 | AUG-23 | SEP-23 | *OCT-23 | TREND |
|--|--------|--------|--------|--------|--------|--------|--------|--------|--------|--------|--------|--------|--------|--------|--------|---------|-------|
| | 312.50 | 308.17 | 290.70 | 300.10 | 289.50 | 296.50 | 266.60 | 297.25 | 277.00 | 290.00 | 292.86 | 244.27 | 254.92 | 243.50 | 238.50 | *217.82 | ↓↓ |
| U.S. AVG. BRED COWS & HEIFERS (3rd trimester) per head as reported by USDA Monthly National Dairy Comprehensive Report | 1350 | 1407 | 1265 | 1310 | 1290 | 1300 | 1250 | 1352 | 1342 | 1330 | 1400 | 1559 | 1502 | 1540 | 1500 | *1741 | ↑↑ |
| U.S. AVG. FRESH COWS per head as reported by USDA Monthly National Dairy Comprehensive Report | 1571 | 1417 | 1384 | 1701 | 1526 | 1531 | 1436 | 1487 | 1493 | 1544 | 1469 | 1792 | 1615 | 1634 | 1643 | *1830 | ↑↑ |

| CORN FUTURES (\$/BU) | DEC-23 | MAR-24 | MAY-24 | JUL-24 | SEP-24 | DEC-24 | MAR-25 | MAY-25 | JUL-25 | SEP-25 | DEC-25 | JUL-26 | TREND |
|----------------------|--------|--------|--------|--------|--------|--------|--------|--------|--------|--------|--------|--------|-------|
| | 4.566 | 4.794 | 4.924 | 5.016 | 5.016 | 5.076 | 5.176 | 5.230 | 5.234 | 5.086 | 5.072 | 5.232 | ↓↓ |
| | 4.684 | 4.904 | 5.020 | 5.102 | 5.106 | 5.156 | 5.262 | 5.306 | 5.312 | 5.312 | 5.100 | 5.264 | |

| SOYMEAL FUTURES (\$/TON) | DEC-23 | JAN-24 | MAR-24 | MAY-24 | JUL-24 | AUG-24 | SEP-24 | OCT-24 | DEC-24 | JAN-25 | MAR-25 | MAY-25 | TREND |
|--------------------------|--------|--------|--------|--------|--------|--------|--------|--------|--------|--------|--------|--------|-------|
| | 421.1 | 402.2 | 393.6 | 392.6 | 393.8 | 390.8 | 386.6 | 381.5 | 383.1 | 382.2 | 379.0 | 378.4 | ↓↓ |
| | 433.7 | 417.8 | 404.0 | 399.3 | 399.1 | 395.7 | 391.2 | 385.5 | 387.1 | 386.1 | 383.0 | 381.6 | |

| * = NEW | PA MILK MARGIN & IOFC-LATEST PSU VALUES - *AUG. 2023 | CME DAIRY CASH-SETTLED FUTURES (\$/LB) 12/13/23 | SPOT CASH TREND | | | | | | | | | |
|---------|--|---|------------------------------|---|-------|-------|-------|-------|-------|-------|----------|-----------|
| FEED = | FEED COST (\$/CWT milk) | IOFC (\$/COW @ 75 lbs milk) | PA MILK MARGIN (\$/CWT milk) | DEC23 | JAN24 | FEB24 | MAR24 | APR24 | MAY24 | JUN24 | 12/13/23 | TREND |
| | *AUG (estimated) *8.84↓ | *8.14↑↑ | *14.78↑↑ | NFDM | 1.192 | 1.200 | 1.205 | 1.230 | 1.253 | 1.278 | 1.295 | 1.1725↑↑ |
| IOFC = | PREV MO 9.16 | 6.18 | 13.05 | WHEY | 0.419 | 0.420 | 0.430 | 0.430 | 0.447 | 0.460 | 0.470 | 0.3950↑↑ |
| \$/COW | YR AGO 9.38 | 12.61 | 219.65 | BUTTER | 2.590 | 2.440 | 2.452 | 2.475 | 2.508 | 2.516 | 2.511 | 2.4600↓ |
| | Covers ONLY lactating feed, based on 75 lb herd avg, Buff., NY soy price | | | CHEESE | 1.640 | 1.667 | 1.676 | 1.755 | 1.797 | 1.820 | 1.843 | See Below |
| | | | | CME SPOT CHEESE: BARRELS 1.5175 / 40 LB BLOCKS 1.6000 ↓↓ / NC | | | | | | | | |

| * = NEW | ANNOUNCED FEDERAL ORDER PRICES (\$/CWT) | CURRENT FEDERAL ORDER VALUES (\$/LB) * = NEW | | | | | |
|------------|---|--|------------|--------------|--------------|------------------------------------|--|
| CL I ADV↑↑ | CL II↓ | CL III↑↑ | CL IV ↓↓ | ALL-MILK-U.S | ALL-MILK-PA | WEIGHTED AVG. 4-WK NOV. 1-25, 2023 | NOV. 2023 COMPONENTS |
| 19.76(DEC) | 21.21(NOV) | 17.15(NOV) | 20.87(NOV) | 21.60(OCT)↑↑ | 22.80(OCT)↑↑ | PRODUCT VALUE MAKE ALLOW NET | |
| | | MONTH AGO | 4.21F | 4.08F | | CHEESE | 1.7421 0.2003 1.5418 ↑↑ PROT 1.3238↑↑ |
| | | YEAR AGO | | | | BUTTER | 3.0293 0.1715 2.8578 ↓↓ B.FAT 3.4608↓ |
| | | | | | | NFDM | 1.1860 0.1678 1.0182 ↑↑ N.FAT 1.0080↑↑ |
| | | | | | | DRYWHEY | 0.3831 0.1991 0.1840 ↑↑ OTHER 0.1895↑↑ |

| CATTLE - DAIRY PURPOSES(\$/HD) NOV. 29, 2023, New Holland (PA) Receipts up slightly from a year ago, but over half (53%) were open and bred heifers selling generally steady compared to one month ago while 30% of receipts were fresh/milking cows and 9% springer heifers, with both of those classes selling \$300-500 higher than a month ago. | COWS: Fresh | Bred | Springing | HEIFERS: Bred | Springing | Beef X | Open: | 300-600 lbs | Beef X | 600-900 lbs | Beef X | 900-1100 lbs | BULLS (800-1300 lbs) |
|---|-------------|------|-----------|---------------|-----------|--------|-------|-------------|--------|-------------|--------|--------------|----------------------|
| | 2075 | 1600 | 2125 | 1650 | 2100 | N/A | 975 | 1350 | 1150 | | | | |
| | 1590 | 1585 | 1625 | 1700 | 1690 | | 625 | 750 | 1375 | N/A | | | |

| PA Auction Markets Dec. 7-12, 2023 | FED HOLSTEIN STEERS (\$/CWT LIVELWEIGHT) | CURRENT Beef X | WEEK AGO | YR AGO |
|---------------------------------------|--|----------------|----------|-------------------------|
| CULL MARKET COWS (\$/CWT LIVELWEIGHT) | Choice & Prime 1250-1550 lbs light test | 150.00(ltd) | 150.00 | 133.00 ↓↓ |
| Premium White | Bull Calves: No. 1 & 2, 90-130 lbs | 285.00 | 550.00 | 300.00 600.00 135.00 ↓↓ |
| Breakers | 70-85 lbs | 350.00 | 500.00 | 335.00 600.00 140.00 ↑↑ |
| Boners | | | | |

Classifieds

"Say you saw it in FARM SHINE"

1 Services

NEED YOUR COWS clipped? Chester Co., Pa. 610-914-9973. (1/5)

FARM INSURANCE: barns, equipment, hay and grain storage, Workers' Compensation, farm stands and stores, vehicles and farm homes. N.Y., Pa. and Va. Call Alec Pandaleon at 845-242-0113.

AG PHOTOGRAPHER - senior, family, natural cattle portraits. Sales, herd dispersals and ag event photography coverage and albums. Based in Lancaster, Pa. A Farmgirl's Dream Photography. 717-824-1320.

BALING SERVICES - CUSTOM 3x3 and round baling, along with individual wrapping. Out of southern Lancaster, Pa. 717-826-3775.

REPAIRING ALL KINDS, makes and models farm machinery, specializing in discbines, pull type harvestors and corn planters. Also general welding. We also repair older tractors. Harsue Repair, New Holland, Pa. 717-355-0715.

BOB & MILLIE'S DISCOUNT signs. The cheapest guys in town. Free delivery on all sign orders. bobthesignman@yahoo.com. Real Estate-Construction-Banners-Yard Signs-Decals-Magnetic Signs-End of Lane Farm Signs. apple treesigns.com. 410-708-1341.

COMPOSTECH LLC. IS A local Honey Brook business, making and selling organic compost at \$30 per cubic yard. Call Dave at 610-441-5154 to schedule a pick up. Also taking horse manure for free, must be dropped off.

LOWER SCC & IMPROVE conception. Highly effective, 35 years of time tested results and satisfied dairymen nationwide. No withholding ever feed additive, low cost. Call AG, Inc. today. 920-650-1631. www.alphageneticsinc.com

DAIRY PRODUCER - would you like to lower SCC and mastitis rates, provide milking training, breach the language barrier and improve parlor performance? Call Adolph Dossman at 240-286-8996.

INNOVATIVE DAIRY Nutrition - specializing in forage planning to maximize production and optimize herd health through advanced nutrition. To improve your profits, contact Matt at 717-729-4530

REDUCED PRODUCTION? Heat stress? High SCC? Scours? Proven effective solutions to your herd's health needs, no withholding. Call the Dairyman's Helper. 800-829-7512.

CUSTOM COLLECTING - Call for prices. 301-491-3154. Triple-Hil Sires.

KANN'S MILKING SERVICE Franklin & Cumberland Co.

30 years experience, references available. Ryan L. Kann, 717-816-1920.

BARN FULL? WITH 8+ years experience raising heifers, I am the solution to your problem. Space available now. Call today to discuss this opportunity. 717-860-8867.

CUSTOM HEIFER RAISING. Weaned calves to calving. 19 years experience. Modern housing, free stalls, AI breeding, TMR, monthly vet visits. Lebanon Co., Pa. 610-451-3006.

GARDNER CUSTOM HEIFER raising. 40 years experience. TMR in fenceline feeders with lockups, dairy veterinarian manages, adolescent to springers, competitive prices. 540-871-0246, dlgar@aol.com, gardnerheifers.com.

CUSTOM HEIFER RAISING. 300-400 head capacity. AI breeding, hauling available. We do not have state of the art facilities but are committed to an accelerated feeding program. Call for pricing. Reach us at 240-291-0286.

HEIFER RAISING SERVICES offering full health care program, excellent AI breeding program, activity monitor collars, balance ration, pasture for older heifers. Lancaster Co. 717-940-9435.

CUSTOM HEIFER RAISING. Good quality forages. Minerals and hay in TMR. Room for 150-200 head. Troy area. 570-220-4542.

HEIFER BOARDING - Sand bedded freestalls. Corn silage haylage and hay included. \$2/hd/day. 607-382-3633.

HORSE BOARDING available, Willow Street, Pa. area, Lanc. Co. 717-380-7612.

ADAM'S HOOF TRIMMING. 22 years of experience. 717-813-1358.

MID-ATLANTIC HOOF TRIMMING - providing farmers professional hoof care in Maryland, Virginia, Pennsylvania and surrounding states. Call Mikey Barton at 518-567-8046 today for inquiries/scheduling.

HASTINGS HOOF TRIMMING is looking for clients in Pa., N.Y. and Ohio. Call/text 315-283-2717 for quote.

CATTLE HOOF TRIMMING, Western, Pa. Stand up chute, over 10 years in business. Looking for new clients. 814-279-7932, ask for Russell.

TSHUDY'S HOOF TRIMMING. Quarryville, Pa. Serving Southern Lancaster, Chester and York counties since 2003. \$11/cow, free wraps. Hydraulic tilt table. 717-917-8715.

STAND UP HOOF TRIMMING. Two man trimming crew, excellent cattle flow. Serving South Central Pa. and surrounding counties. Will travel for large numbers. Call Matt Weaver, 814-793-9966.

HOOF TRIMMING Service. 717-755-0770.

PHILBRICK'S HOOF TRIMMING serving western and central Pennsylvania, western New York and eastern Ohio. 814-720-0010.

HOOF TRIMMING - Garrett Co., Md. Tilt table. Willing to travel distances for large groups/herds. \$10/ cow. Trained at Dairyland Hoof Care, Wis. 301-616-2195.

HOOF TRIMMING SERVICE - providing quality service for large and small dairy and beef herds. \$10 per cow. Graduate of Hoof Care Institute. Stand up chute. 315-573-6742.

MACIK HOOF TRIMMING - Beef and dairy cattle. Hydraulic tilt table. Serving Western PA, Eastern OH, Northern WV. Phone 724-345-8501.

PROF. HOOF TRIMMING - RSW Farms LLC. Hydraulic table, competitive rates, serving MD/PA/NY. Contact Ryan 518-935-7704 or RSW-Farms@yahoo.com.

MIKE'S HOOF TRIMMING - Since 1988. Hydraulic table. 814-997-9021.

PROF. HOOF TRIMMING - call for more info/available dates. 570-690-1017.

SHUMAN'S HOOF CARE - Serving dairies in Northeastern & Northcentral Penna. and the Finger Lakes region of N.Y. Call Tom, 570-418-1684.

CORRECTIVE HOOF TRIMMING - New Tuffy -tilt table. Cow comfort, professional work. Call Sam Beiler 717-222-6180.

NEED YOUR COWS clipped? Call 717-768-8345 ext 1.

STRUGGLING WITH MICE and rats? Try First Strike. Oregon Ag LLC. 717-656-0067.

DEAD ANIMAL REMOVAL. Call Mike at 717-855-5503.

DEAD ANIMAL REMOVAL. Removal of dead farm animals. 717-228-9500. M-F 8-4, Sat. 8-11 or text.

LIVESTOCK HAULING Local/long distance. Pa., N.Y., Ohio, Va. 814-592-2543.

SILO DEMOLITION. 717-786-6063.

HARVESTORE SILO REPAIRS, extensions, and roof replacements. Call us at 717-786-6063.

NEED YOUR EQUIPMENT, building or house pressure washed? We have the equipment to do the job. Call us at 717-644-6295.

DAIRY SERVICE TECH - servicing all brands of dairy equipment. South central, Pa. Wes Sollenberger, 814-505-6304.

CUSTOM COMBINING services. Well maintained equipment. Reasonable prices. Call 315-573-6742 for more information.

RESTORING GRANDPA'S old tractor doesn't have to cost an arm and a leg! Full

service repairs and restorations. Agriculture and industrial repairs. York Co. 717-368-1354.

FARM MACHINERY REPAIRS, NH small square baler parts, Discbines, Haybines, rakes, feed mixers, discs (new blades), forage harvesters and more. 607-243-5896.

DISCbine DOCTOR - Repairing all makes. Buying & selling. After market cutter bar, bearings, or NH/JD/Kuhn and used parts. Call ahead 717-768-7542.

SERVICE DONE ON ALL brands of fence energizers and battery chargers. Call Sensenig's Electronic Repair at 717-445-9905 for your repair needs.

3 Dairy Equipment

WESTFALIA-SURGE auto-tandem milking parlor. 8 stalls, bolt-down installation. Variable speed vacuum pump, plate cooler, complete, good condition. Everything for \$8000. 570-809-6567. (1/12)

200 GALLON MUELLER upright, compressor; 2500 Mueller, washer, compressors; Rissler reel mixer 175. 814-931-5860. (12/15)

4' X 6' COW MATS. GOOD mat for the money and easy to install. \$80 each, including hardware. 717-304-6684.

USED MILK TANKS - 375 gal. Milkeeper; 600 gal. Mueller M; 800 gal. Mueller OH; following tanks are storage only: 1500 gal. Mueller O; 800 gal. O. T.H. Homing. 717-438-3104.

GUTTER GRATES FOR tiestall barns. Innovative design prevents hoof injuries. Call for more information and current pricing. 717-464-6476.

4 Dairy Cows

CERT. ORGANIC COWS. 570-250-1725. (2/24)

A2A2 HOLSTEIN COWS, just fresh and milking well. 1st, 2nd and 3rd lactation. SCC

Farm Insurance You Can Count On.

At Roger W. Myers Insurance Agency, we believe in providing farm insurance you can count on. That's why we often recommend Goodville Mutual. Goodville operates with the highest degree of compassion and integrity and has insured thousands of farm owners for over 30 years.

For your farm's insurance needs, contact us today and discover for yourself why so many farm owners believe *there's a lot of good in Goodville.*

ROGER W. MYERS
INSURANCE AGENCY
570-546-2845
RogerMyersAgency.com
183 EAST WATER ST • MUNCY, PA 17756

Goodville Mutual
Casualty Company

Special Dairy Sale

SALE HELD AT FISHER'S QUALITY DAIRY SALES
3304 OLD PHILADELPHIA PIKE, RONKS, PA.

THURS., DEC. 28 • 11:15 A.M.

We will be selling many good, young, fresh cows and heifers from overstocked herds and heifer raisers with good udders and lots of milk!

A few selling include:

- Reg. 2 yr. Red & White Acme, fresh November, milking 80 lbs. Dam NC. Next 13 dams VG or EX.
- 4 Reg. fresh 2 yrs. from one 30,000 lb. herd. The right kind!
- 4-5 young, fresh cows from one 24,000 lb. herd.
- 6 Jersey heifers 8-13 months old.

The Fishers thank all customers for their business in 2023 and wish everyone a Merry Christmas and a Prosperous New Year.

Plus many more good, young cows with lots of milk!
Free chocolate milk • Not responsible for accidents

Sale managed by: **FISHER'S QUALITY DAIRY SALES**
Jonas Fisher • 717-768-3297
Auctioneer - Dave Stoltzfus - AU005655 • Pedigrees - Dan Albright

Free hams
Free ice cream

NEW HOLLAND SALES STABLES, INC.

Located 12 Miles East of Lancaster, PA. Just Off Rt. 23, New Holland

Free hams
Free ice cream

SPECIAL CHRISTMAS DAIRY COW & HEIFER SALE

WEDNESDAY, DEC. 20TH • 10:30 A.M.

Special Mention
20 **BEST** cows from Lancaster County tie-stall herd.
16 milking 90-100+ lbs. Fresh dates, individual components, SCC in catalog.

Every buyer receives a FREE Hazel ham!

Consignors: Please send all info with truckers for the catalog.
For more information, contact dairy reps:
Aaron Martin, 717-445-4825 (home); Bill Hough, 973-224-0204 (cell).
Have a "Merry Christmas" from everyone at NHSS

HOLIDAY SCHEDULE:

No sales Monday, Dec. 25th (Christmas Day)
No dairy sale Wednesday, Dec. 27th
Special sheep and goat sale Wed., Dec. 27th, starting 9:30 a.m.
All other sales will be conducted as scheduled!
Including: New Years Day Sale. Selling horses at 10 a.m.; cattle, cows, calves at 8 a.m.; sheep and goats at 9 a.m.

Sale Managed By
New Holland Sales Stables, Inc.
Barn 717-354-4341 Fax 717-355-0706 • David Kolb, Mgr. 61L

under 100,000. 814-221-6079. (1/5)

LAND O'LAKES MILK base 4000 lbs. 717-380-0346.

JERSEY VG 88 COLTON daughter born 6/1/16. Dam 92, then 90, then 97 Veronica. Due 12/26/23 to Maid of Magic. Extreme components in pedigree. \$1800 717-320-3330. (12/15)

LAND O'LAKES milk base for sale. 814-360-8842.

BUYING AND SELLING dairy herds, heifers and service bulls. Call Aaron Coons, 717-816-4118.

JUST FRESH, 1ST LACTATION Reg. Holstein cows. Good quality, well grown animals. 3-4 generally available each month. 570-297-5118.

5 Heifers & Calves

5 REG. HOLSTEIN HEIFERS Top of the line breeding. Starting to calve February 1st. 419-302-3148. (1/5)

6 Dairy Bulls

REG., GENOMICALLY tested Ayrshire bulls. Two July Blackjacks from WDE winning milking yrlyg Palmyra Ringer B Rayna VG-87. June Ringer son from Steel Fire Burdette Gracen EX 91 Res AA Sr 2 2021. Palmyra Farm, Hagerstown, Md. Call Mary at 301-471-0726 or Evan at 301-514-4213.

REG. HOLSTEIN BULL, Burket-Falls Fitzy, 4/11/21, Mr. D Diamondback son, very nice heifer calves. Also, 1 year old angus bull, very nice, calm. Contact me at 570-960-2344 for more information. (1/12)

B&W AND R&W POLLED homozygous Holsteins, A2A2. Some genomically tested also.

Lebanon Co., Pa. Con-Ger Farms. 717-821-1454.

WANTED - Reg. Jersey bull, 12-15 mos. old. Call 856-478-2942.

REG. HOLSTEIN BULLS for sale. Ar-Joy Farms, Cochranville, Pa. 610-637-7423.

HOLSTEIN BULLS ready for free stalls and younger. High genomic tested bulls from contract matings and high type cow families. 610-932-6062. Call btw. 8-8:30 a.m.

BULLS FOR SALE & LEASE - Reg. Holsteins, any age out of dams with records to 30,000M, 1200F. Stump Acres. York Co. 717-792-3216.

7 Semen, Embryos

HELSEL-HILL HAS expanded. Call or text Keith Hesel for No Bull sires, Blondin sires, Resolution-Red, Furnace Hill Zas Endure, and more. 814-515-5455.

91HO5821 MARTIN-DALE Jonah Joseph AAA 426. Sire stack is one of the best in the Holstein industry. Jonah x Mr America x Adolph x Leader x Aerostar. Dam of Joseph Josephine 3E, 91 pts. Just finished her record as a nine year old. 26,772 milk, 4.8 butterfat, 3.7 protein. Use this sire to improve rump, feet and legs and overall strength. Have questions, call Martin-Dale Holsteins 717-445-6548. Need semen call Stolhaven Genetics 717-672-1838.

CUSTOM COLLECTING - WE custom collect your bull at our facility. Semen is processed with high quality standards at very competitive rates. We also offer short-term housing options during collection. Triple-Hil Sires 855-955-2100.

DONEGAL-CREEK BAXTER Pedro-ET, reg # 139932533. He is EX-94 AAA (4352). From

5 EX dams- 94, 90, 91, 91 & 95. Dam is 94 pt. Outside daughter, still in herd at 10 yrs. old & looks half her age. Sire stack is Baxter, Outside, Rudolph, Conquest, Starbuck, Citation R, Elevation. Very well balanced bull siring the right kind. Strength with dairyness. High productive life, low SCC, high conception. Early daughters are milking great & look better than their dams. Priced at \$14 for 20 units or more. Joe Wivell 717-471-5260.

9 Equipment & Machinery

NEW HOLLAND 195 manure spreader, excellent condition, \$21,000. NH 258 hay rake, very good condition, \$3200. Sullivan Co., Pa. 570-419-8981. (12/15)

CLAAS FORAGE harvester 2012 Jaguar 930 494-series, 4WD, 410HP, 2660 cutter hrs. KP. Inspected with warranty. Call for details. \$138,000 or \$155,000 with 6-row head. 717-400-7917. (12/22)

SELF-PROPELLED forage harvesters and heads available. Claas, John Deere and New Holland. Visit www.cvfequipment.com or call 717-400-7917 if looking for a particular model.

RISSLER 1 YARD self-unloading skid loader bucket with 8" unload auger. Call 717-463-9731.

FOR RENT: E RISSLER 330 trailer TMR mixer, \$30/day; IH Rissler 510 TMR cart, \$10/day. Delivery avail. Myerstown, Pa. 484-793-2179.

ROOFERS BUGGY-RENT for \$125/day or \$500/week. Lancaster Co., Pa. Call 717-808-4155.

10 Feeds

1ST, 2ND, 4TH ALFALFA tested, 3x4x8' Chinook dried straw. Delivered or FOB. 610-767-2409, heidelhollowfarm.com.

BUYING DAMAGED GRAIN. Trucking is available. Call 717-575-5197.

CERTIFIED ORGANIC KELP meal. Redmond minerals. Dealers available in select areas. Hess Farm Supply. 717-354-9492.

FASTRACK - Improve milk production, increase feed utilization and improve herd health with Fastrack direct fed microbials. Contact Karl at 740-504-2859 or email klbss@columbus.rr.com.

11 Hay

CERT. ORGANIC 1ST, 2ND and 3rd cutting balage in tubes; 4x5 dry round bales heifer dry cow hay. Delivery available. 570-250-1725.

GRASS HAY, SMALL BALES horse hay, also large square bales horse hay. Can deliver. 717-203-9679. (1/5)

ALFALFA BALEAGE, 4x4 wrapped round bales, \$60 each. Also, small square bales alfalfa or grass, various prices. Richard Trinca, 814-349-8010. (12/29)

HIGH QUALITY 1ST & 2ND cutting grass hay, 3x3x7 bales, low potassium. #1 hay, tested. Lebanon Co., Pa. Con-Ger Farms. 717-821-1454.

CERTIFIED ORGANIC mixed grass and clover hay. Call from 7a.m.-4 p.m. 717-463-9731, leave message.

ROUND BALES OR LARGE squares. Delivered by ton

loads. Coons Farms. 717-816-4118.

HAYBUSTERS - Dairy and beef quality alfalfa, low K hay and straw. Large and small squares. Call Mark at 800-371-7928, or visit www.haybusters.com.

12 Straw & Bedding

CHOPPED STRAW in 3x3x6 bales. Good for bedding or TMR mixers. Available now. Lebanon Co., Pa. Con-Ger Farms. 717-821-1454.

HIGH QUALITY SAWDUST available for delivery. Great sawdust for dairy and beef cattle. Call 301-334-6212 for delivery range, pricing and availability.

USE BALED SHAVING in your dairy barn. You'll love this very fine pine bedding. \$5.50/40 lb. bag. 610-273-3602.

HAY OR STRAW-any type or quality. Call 717-253-6049 for pricing.

15 Vehicles & Trailers

TRAILER PARTS, TOWING accessories, trailer hitches, and cushion hitches. UPS to your door. Weaver Distributing. 1-800-Weaver-D. Save!

16 Fencing

TIMELESS FENCING - The post is the insulator. Versatile design is self-insulating and easy to install for sheep, goats,

cattle & horses. Allegheny Meadows. 814-285-1541.

17 Silos

HERCULES high moisture corn unloader for 17 ft Harvestore. Completely rebuilt in 2021. 717-320-3330.

USED A.O. SMITH model 1250 Slurry Pump with agitation nozzle and load out line. 717-463-9731.

SILO DEMOLITION. Contact Beiler Silos. 570-745-3574.

HARVESTORE SILO ROOFS, affordable white or stainless. Solve spoilage. Sheet replacement, silo demolition. Parts, repairs on Harvestore and stave silos. 717-517-2080.

HARVESTORE SILO REPAIRS, also demolition and removal. Used replacement blue or white silo roofs, door frames, doors, lids, breather bags. Installation available. 717-768-0452.

SOLLENBERGER SILOS

5778 Sunset Pike Chambersburg, PA 17202

Poured Concrete Silos for Farm and Industry Since 1908

For information call: Ken Mansfield 717-503-8909

www.sollenbergersilos.com

BEILER-CAMPBELL AUCTION SERVICES

Auctioneer **Harold D. Case Jr** #AA019340


- Real Estate
- Farm Equipment
- Personal Property
- Business Dispersals
- Inventory Reduction Auctions

54 Midway Rd
Bethel, PA 19507
(717) 821-5963
hcase@sonlightservices.com

Office: (888) 209-6160 www.beiler-campbellauctions.com

DAIRY SALE

Penns Valley Livestock, Centre Hall, Pa.
Friday, December 22, 2023
starting at 11:00 a.m.



Herd #1 - Jacob Beiler, Centre Hall - 50 cows, Reg. purebreds. Sample pictured. Avg. 75 lbs., not pushed. No TMR, closed herd for over 20 years. Select Sires mated. Good udders and legs. Cows consist of 17 first calf, 13 second calf and 14 third calf. The rest are older. 21 fresh in the last 90 days. 4 dry cows, 26 bred back. 145 avg. days in milk.

Herd #2 - 25 cows hand-picked out of 43. On concrete and out to pasture daily.

Auctioneer: Samuel Stoltzfus AU005760
Questions? Call: David Bierly 814-571-1167

Replacement Silo Doors

Many Kinds In Stock

- Marietta
- Fickes
- Madison
- Terre Hill
- Lancaster
- Ribstone

Silo Door Hardware

- Butterfly Hinges
- Latches
- Steps
- Ladder

Silo Doors Made To Order
Bring Pattern of Old Door

Willow Road Silo Doors

Daniel Beiler
624 Willow Road
Lancaster, PA 17601
717-394-1004



Horse Consignment Auction

500-600 HEAD **Friday, Dec. 29** 500-600 HEAD

Penns Valley Livestock
2925 Penns Valley Pike, Centre Hall, Pa.
Starting 7:30 a.m with AS-IS horses.
Work horses at 8:00, followed by ponies, riders and driving horses.

CHRISTMAS GIFT GIVEAWAY
One gift for every buyer

No fee to catalog your horse. If catalogued, you are putting a one-week guarantee on your horse. No AS-IS horses will be put in catalog.

Call by Wednesday, Dec. 27 - (814) 364-1796 (leave message) or fax to (814) 364-1426.
5% commission - Minimum of \$25 - Max \$100
Pick up your check day of sale.

Auctioneers: Atlee Shetler AU005270 | Samuel Stoltzfus AU005760
Managers: David Bierly | Erica Smith

WHOLE COTTONSEED • CORN • 48% SOYBEAN MEAL • ROASTED SOYBEANS • CANOLA MEAL • LINSEED MEAL

TRIPLE • M • FARMS

Custom Feed Mfg.

WE MIX FEED ACCORDING TO CUSTOMER AND NUTRITIONIST FORMULAS

Also Available:
BULK COMMODITIES

Call Us At:
(717) 272-3225

MINERALS • NON-GMO

SOY PLUS • AminOleic • BLOOD MEAL • BEET PULP • FAT PEAK

Zimmermans

Glasslined Storage
Oakland Mills, PA
36 Yrs. Experience • Silos & Tanks
717-463-9731
www.silosandtanks.com

Pre-Owned Slurrystores® and Harvestores® in Inventory - Ready to be built

FUSION TANKS & SILOS
AISTOR Stainless Steel Engineered Roofs
Zabel Equipment Hydraulic Manure Pumps
DRYHILL Manure Pumps

afs automatic Hammermills
E. RISSLER MFG. Spiro Mixers
Quality Parts, Inc. Harvestore® Aftermarket Parts
Challenger Slurrypump HOT-DIP GALVANIZED

Rebuilt Harvestore® Unloaders In Stock - installed with a 2 year warranty
WE SERVICE WHAT WE SELL

SERVICE DEPOT

Alvin Eberly Harrisonburg, Va. 540-820-0818
Norwain Acres Orrville, Ohio 330-621-1276
Zimmermans Oakland Mills, Pa. 717-463-9731

Zimmermans is not affiliated with CST Industries, Inc.

BEILER SILOS - SILO PARTS, sales, service. New and used silos. Shotcrete relining. Foundation repair with Shotcrete. Tear down and rebuild. Silo doors made to order. 20 years experience. Serving Lycoming and surrounding Co. Jersey Shore, Pa. 570-745-3574.

I BUY USED SLURRYSTORES. Call 315-404-6721 or 315-495-6506.

SILO DOORS, galvanized steps and latches, poly door panels cut to size for all types of silos. Quality products are always a good investment. Meadow Springs Farm, Gordonville, Pa. Sales brochures and quotes call J. Elmer 717-768-3337 ext.1.

RE-BUILT SILOS, New or used, relines, parts and repairs. SR Silos 717-527-4103.

S & S SILO SERVICE - We erect silos, repair silos with shotcrete, repair concrete walls, stone walls, and foundations with shotcrete. Serving the shotcrete and silo industry for 25 years. 610-273-3993.

MANUFACTURERS of silo doors and hardware. Double thick tongue and groove cedar

poly and plywood doors. Hardware is powder coated. Agri-Door. 717-949-2034.

19 Real Estate

20 ACRE FARM FOR SALE in Chambersburg, Pa. Duplex home with 6 bedrooms, 3 bath. Bank barn with 56 freestalls, trench silo, completely fenced for livestock. 240-291-3019. (1/12)

NORTHERN PA. year round home with spacial property. Gorgeous mountain views, near State Gamelands and developed bicycle trail. Sits high and dry. 717-856-2024.

THE GET-R-DONE REALTOR. Rodney Rice, 717-729-9501. 50 years serving farmers selling, buying, auctioning. Landfarmrec-JAK Real Estate. 717-753-5510.

TO BUY/SELL REAL ESTATE in Pa. call Thomas Hershey at 610-209-7096. Hershey Farm Agency, Inc., HersheyAuction-LLC.com. 800-880-3831.

BEILER-CAMPBELL Realtors and Auction Services, Farm and Land Division. Are you looking to purchase or sell a

property in Pa. or Md. Call Chris Taylor, office mgr., 888-786-8715 for an auctioneer or realtor.ctaylor farms.com.

20 Wanted

QUALITY DAIRY HERDS, springers, open, bred and fresh heifers. 570-504-4443.

ROTARY TYPE SELF-PROPELLED tiling machine; used manure screw press; small older/cheap pull camper (like the Scotty's); person that fabricates stainless steel. For more information, call Sherman Allen 814-671-9947, cell/text, works 24/7, has voicemail.

BUYING HARVESTORE silos & Slurrystores. Call 717-517-2080.

ISSUES OF HOLSTEIN World, Jersey, Brown Swiss, etc. (all other dairy cattle breeds) magazines, sale catalogs and sire directories. 716-255-5625.

I AM STILL LOOKING FOR used books and publications about dairy farming, printed early to late 20th century. Interested in all farming related topics. Paying cash. Phone Owen Backus, 608-479-0811.

I BUY TRUCKER HAT collections. 215-896-5609.

PREMIUM PA FARM SHOW BOOKS. Years needed 1923, 26, 28, 31, 33, 34, 50 and 52. Contact C. Sherman Allen, 11367 St Hwy 285, Conneaut Lake, Pa. 16316, phone 814-671-9947.

21 Opportunities Wanted

OLDER MAN SEEKS part time/full time work on farm with on-farm housing or nearby. Prefer Franklin Co. area or nearby. Consider other areas. 717-816-9693.

INDIVIDUAL SEEKING herdsman position or looking to rent approx. 50 cow dairy farm. 814-442-5782.

YOUNG FARMER looking for a dairy farm to rent, ideally a rent to own situation in Pa. or Md. 717-824-1320.

22 Help Wanted

HERDSMAN/husband and wife team to operate 150 cow free stall dairy farm. Housing available. Serious inquiries only. Lebanon County, Pa. Call or text 717-629-6456. (2/23)

FEEDER/GENERAL LABOR help needed on 600 cow dairy. Equipment experience preferred. Valid drivers license

required. Possible housing available. Contact Kyle at 717-644-7879. Halifax, Pa. (1/26)

23 Pets

2 CAVAPOO PUPPIES - one black with white, one tri-colored. Both males. Very friendly. Buy one for \$900, get one free. 484-388-9574

24 Seeds

ALFALFA, GRASS MIXES, oats and sorghum. Hefty brand and Augusta seed corn. Jacobsen GT soybeans. Leabrook AG, call us at 717-898-9576.

NEED SEED OATS? We can obtain almost any variety. Also publish quarterly oat marketing newsletter. \$12/year. J.C. Goss, Box 312, Hurley, MO 65675, 417-708-7860.

KING'S AGRISEEDS, feeding your farm's future through high energy forages, and soil building cover crops. Lancaster, Pa. 717-687-6224, infokingsagriseeds.com, www.KingsAgriSeeds.com.

CORN SEED. PRICING starting at \$129/bag (before discounts). De Dell Seeds, the leaders in Non-GMO corn. 519-264-CORN.

ALFALFA, CORN, SOYBEANS and more! Call us for all of your crop needs. Growmark FS-Eighty Four. 724-222-4303, www.growmarks.com.

TRY THE NEW WINNER 2015 World Forage Analysis Superbowl - Alforex Hi-Gest 360 Alfalfa, cutting edge digestibility. Hess Farm Supply 717-354-9492.

SEED CORN - Partners brand, Mid-Atlantic, Prairie Hybrids.

Lots of customer satisfaction. Dairyland hybrid alfalfa's quality yield digestibility. Oregon AG, 717-656-0067.

HUBNER SEEDS - Alfalfa, Corn, Soybeans, call Merle Stoltzfus. 717-224-0700.

APPLY AGROWSIL TODAY Quick and long lasting PH increase, increased yields, soil nutrient release, disease and stress tolerance, and drought tolerance. 1-800-850-0527.

25 Miscellaneous

STOP FLIES. GREAT products. Fly parasite plans. Cedar solar traps (the best). Zapper that just keeps zapping. www.dairyflyparasites.com. 888-771-3276. Useful Farm Products.

LOOKING TO GET RID of insects? Buy bluebird or tree swallow houses. Plus more. 717-529-2326, ext. 1.

CLEANING OUT YOUR attic? We'll take any magazines, newspaper, books, etc. for old man to shred for horse bedding. Call now. 717-529-2326, ext. 1.

SEE FARMING IN N.Y. through the eyes of an 11 year old. Visit Youtube and search "4th Gen Dairy Farmer" for videos. Call 716-474-1705 for information.

HORSE, DONKEY AND calf blankets. Reasonably priced. Dealers welcome. Call 717-361-4474.

LIGHT UP YOUR BARN with custom made clear poly carbon doors. Also custom manufacturing and repair. Jonas King, 3451 Sunnyside Rd., Manheim, Pa. 17545. 717-361-8853, ext. 4.

POLY SILO DOORS - Steel horse hitches; pine shavings; pine bedding pellets; Meadow Springs Farm, Gordonville, Pa. 717-768-3337, ext. 1.

PAINTED MILK CANS - farm scenes \$200 or have one custom painted with cows, horses or any family pet. Carroll County, Md. 410-259-1276.

OLD AERIAL PHOTOS of your farm or home dating back to 1963. Nathan Lewis 888-402-6901 or vintageaerial.com.

27 Livestock

PUREBRED HEREFORD bull, 20 months old, good disposition. \$2500. Columbia Co., Pa. 570-380-3047.

ANGUS BEEF, READY FOR slaughter. 570-488-6596.



Regional Sales Representative

The Holstein Association seeks dynamic, innovative, and talented Regional Sales

Representatives for the State of New York. The candidate must reside in the Syracuse / Utica area.

Job Purpose: Promotes and sells Holstein Association USA products and services to current and prospective customers in order to help the Association achieve its annual sales and revenue goals.

Major Responsibilities: 1. Increases Holstein Association revenues by selling/providing the full menu of Association products and services, selecting specific products and services for individual dairy producers that will increase both their short-range and long-term profitability. 2. Works to continually develop and strengthen personal marketing abilities by constantly upgrading computer skills, staying on the leading edge of Association software and prominent dairy management software, learning new selling techniques, and setting aside time to read and stay current on Holstein and industry topics. 3. Enhances the knowledge level about Holstein Association services within the industry by attending/participating in sales, shows, member meetings, seminars, trade shows, and conferences where education and promotion can be accomplished. 4. Works to improve Association products and services by providing feedback to product managers and other Brattleboro staff on ways to increase the usefulness and value of our current services and offering ideas for new services. Maintains a professional attitude about current products at all times. 5. Develops a network of industry contacts within assigned territory in order to remain up to date on industry developments and obtain new business prospects. 6. Supports all Holstein Association staff by giving field assistance when appropriate and maintaining a professional team attitude while dealing with criticism of operations and/or other staff.

Education and Experience: BS in Dairy Science, Animal Science, Business or related field, preferred. 3+ years of experience, preferred.

Competencies: Must have valid driver's license and insurable driving record; Excellent cattle evaluation skills; Excellent computer skills; High level of sales skills; High level communication skills (listening, written, oral); Very strong organizational skills; Strong knowledge of dairy cattle management, genetics, and registered Holstein dairy business; Positive, professional, and enthusiastic attitude; Ability to relate to all types of dairy producers; Ability to maintain a professional appearance and demeanor; Ability to travel 50% - 75% of their work time.

Salary Range: \$55,000 - \$70,000 depending on sales and dairy industry experience.

The **Regional Sales Representative** will receive a competitive salary and benefits package. If you meet the qualifications noted above, please apply through the Holstein Association Careers website.

The Holstein Association is an Equal Opportunity Employer and as such, complies with all federal, state, and local laws prohibiting discrimination, actual or perceived, based on race, creed, color, age, religion, alienage or national origin, ancestry, citizenship status, sexual orientation, genetics, protected veteran status, gender identity or expression or any other characteristics protected by law.

FINE GROUND *Wood Bedding*

Dry, Absorbent BEDDING For Sale

14 yd, 30 yd, and 110 yd loads
Call for Pricing

Buy in bulk and save!

BEILER INDUSTRIES 717-768-7667

UNIVEST IS HIRING!
JOIN OUR CENTRAL PA AGRICULTURAL LENDING TEAM!

Ag Lending UNIVEST BANKING | INSURANCE | INVESTMENTS

Univest Bank and Trust Co. is an Equal Opportunity Lender

Are you passionate about agriculture and finance? We're seeking an experienced **Agricultural Portfolio Manager** to join our team. As an Ag Portfolio Manager, you will be responsible for overseeing a portfolio of agricultural investments, managing client relationships, and providing strategic financial guidance to farmers and agribusinesses.

Univest Financial Corporation and its subsidiaries serve the financial needs of residents, businesses, and non-profit organizations throughout the Mid-Atlantic region. We offer an excellent benefits package, including medical and dental insurance, generous paid time off, matching 401k, tuition reimbursement, life insurance, discounts on many banking services and much more!

If you are ready to take on this exciting opportunity, please apply online today at www.univest.net/careers. We look forward to welcoming a dedicated Agricultural Portfolio Manager to our team.

An Equal Opportunity Employer, including disability/vets.

SOYBEAN ROASTING ON YOUR FARM

- Full-fat roasted soybeans for maximum feeding value
- High-energy, bypass protein and palatability
- Toxic enzymes and molds destroyed
- Custom roasting in MD, DE, PA & Southern NJ

HORST GRAIN ROASTING
Chester Co., PA
(610) 869-8834

Precast Systems, LLC
Producing concrete since 1923

FEED BUNKS BUNKER SILOS CATTLE GUARDS

NCPA certified plant
Installed on site
717-369-3773
www.precastsystemsllc.com
5877 Bullitt Rd. Greencastle, PA 17225

December proofs place 17 bulls into daughter-proven ranks

PLAIN CITY, Ohio – Results from the December sire summaries launched 12 Holsteins, four Jerseys and one Brown Swiss sire to the daughter-proven ranks. This class of newly proven sires excels for a multitude of traits and merit indexes from fertility and component yields to health and functional type.

Among the graduates are leaders for Herd Health Profit Dollars® (HHP\$®) – the index designed to create healthier, longer-living cows that garner a greater return on investment, reduce herd turnover and lower your dairy's carbon footprint, according to Select Sires.

Holstein highlights

- Seven graduates boast HHP\$ values greater than +1000 with 7HO15245 Perpetual (+1170), 7HO15233 Milky (+1137) and 14HO14982 Rashan (+1092) leading the charge.

- Sires that qualify for the Mastitis ResistantPRO® designation, offered exclusively from Select Sires, excel for Zoetis Mastitis Resistance, CDCB Mastitis and Somatic Cell Score. Daughters of Mastitis ResistantPRO sires have the genetic potential to experience less mastitis events – boosting milk quality and saving on treatment costs.

Perpetual, Rashan, 7HO14990 Rooney, 14HO15301 Gordy, 25OH015087 Rozline, 7HO15124 Tanger, 7HO15325 Hanans, 7HO15203 Boeing-P-Red and 25OH015329 Thunder Struck each qualify for the Mastitis ResistantPRO designation.

- 14HO15179 Trooper is becoming known as 25OH014134 Renegade's best son to-date. He ranks among the breed's top five sires for TPI® (+3063) and transmits positive daughter and sire fertility with high component yields and overall type improvement.

- Gordy is a sire that does it all, Select Sires proclaims! He offers elite production (+1330 PTAM), solid components (+151 CFP) and valuable health and wellness traits. In addition to his Mastitis ResistantPRO designation, he is a FertilityPRO®, FeedPRO®, RobotPRO® and GrazingPRO® sire and has gender SELECTED™ semen available to fill heifer pens with high-quality replacements.

- Red & White breeders take note of Boeing-P-Red's elite health traits, unique pedigree, A2A2 beta-casein, BB kappa-casein and Polled status.

- Milky is an early 7HO14454 Lionel son that moderates frame size while ranking extremely high for nearly every index from TPI (+3047) to HHP\$ (+1137).

- Perpetual delivers elite CFP (+207) coupled with valuable health traits to create highly efficient and trouble-free cattle.

- Breeders looking for a

unique pedigree might want to consider 7HO15465 Crusher (7HO14434 Calvary x 7HO12797 Legendary). He has an attractive linear profile, huge components and exceptional semen fertility.

- Rozlin daughters possess beautiful udder texture, well attached mammary systems and produce high-quality milk.

Showcase™ highlights

- Tanbark enthusiasts, take note that Hanans and Thunder Struck have earned their graduation caps confirming their superior genomic type data.

- Hanans offers elite +2.93 UDC and +3.53 PTAT values combined with mastitis

resistance traits and positive sire fertility.

- Thunder Struck's Doc-free pedigree offers diversity within the Showcase lineup and he's a dual threat making both show-winning heifers and cows.

Jersey highlights

- 7JE1899 JX Goals {5}-P is the total package: proven Polled genetics with extreme DPR (+2.1), A2A2 beta-casein and BB kappa-casein.

- 14JE1876 JX Colgate {6} is a production powerhouse with +1341 PTAM and +101 CFP. For daughter and sire fertility, he offers +0.3 DPR and a FertilityPRO designee.

- From the famed, two-time national

grand champion, Circus, hails 7JE1882 Carbine. He's a balanced, JX-free sire with great-uddered daughters and sought after A2A2 beta-casein and BB kappa-casein.

- 7JE1879 JX Rhodes {5} should boost mastitis resistance in the next generation while transmitting A2A2 beta casein, BB kappa-casein and big-time component volumes.

Brown Swiss highlights

- 9BS916 Papparazzi is a Toby son from brood cow extraordinaire Hilltop Acres Cad Paula (VG-87 VG-88 MS CERT) He offers high PTAT (+0.7) and is siring eye-catching daughters.

LET'S MAKE THEM ALL #1 COWS



0%
FINANCING



25% OFF
NUTRITION

0% FINANCING FOR UP TO 60 MONTHS

- Promo valid between October 1 until December 31, 2023
- The hardware costs will be split in 24 or 60 monthly payments (so for 2 and 5 years)
- Available for new and existing US customers
- Keep payment occurrences alike
- No finance/interest charges
- Account must be in good standing
- Minimum order 10 sensors (new orders and reorders)
- This promo can be combined with other promos

25% OFF FIRST YEAR NUTRITION MODULE

- Promo valid between October 1 until December 31, 2023
- Available for new and existing US customers
- Free trial for 4 months for existing customers
- Free Transition and Nutrition analysis report for existing CowManager customers
- Discount available until 30 days after the trial period ended
- Can be combined with other promos and the heifer rule

SPECIAL OFFER
3 MONTHS
FREE
SOFTWARE
FOR NEW CUSTOMERS
FROM OCTOBER 1 -
DECEMBER 31



FOR ALL YOUR HOLSTEIN NEEDS

COWS-HEIFERS-BULLS-HERDS

DANIEL ALBRIGHT

1866 Landisburg Rd.
LANDISBURG, PA 17040

PHONE: (717) 789-3241

FAX: (717) 789-4993

EMAIL:

dalbright44@embarqmail.com



YOUR SUCCESS *Our Passion.*

Select Sires Member Cooperative

Phone: (614) 878-5333

Web: www.cobaselect.com

Premier Select Sires, Inc.

Phone: (800) 227-6417

Web: www.premierselectsires.com

Rex-PP-Red



The bulls that were bred to be cows

- ✓ Breeds with consistency
- ✓ Superb udders and feet & legs
- ✓ Homozygous polled & A2/A2
- ✓ Rare aAa code: 546312
- ✓ Fertility specialist

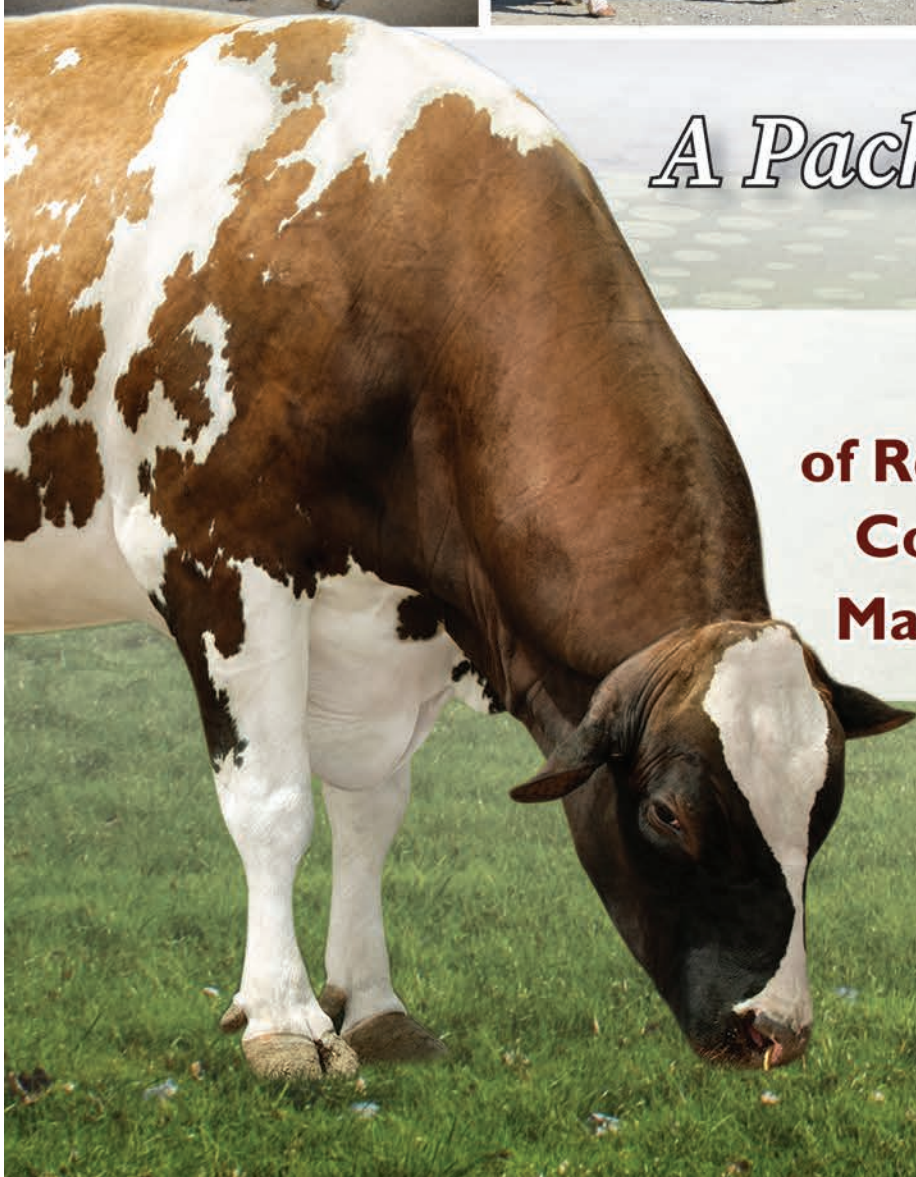
Contact us:

Phone: 1-855-955-2100

Fax: 1-240-489-7845

Email: sales@triplehilsires.com

Website: www.triplehilsires.com



A Package of Profitability!

**Over 100,000 doses
of Rex-PP-Red semen sold to date!
Congratulations to his breeder
Mark Yeazel at Ja-Bob Holsteins!**

**Thank-you for your
business in 2023!**